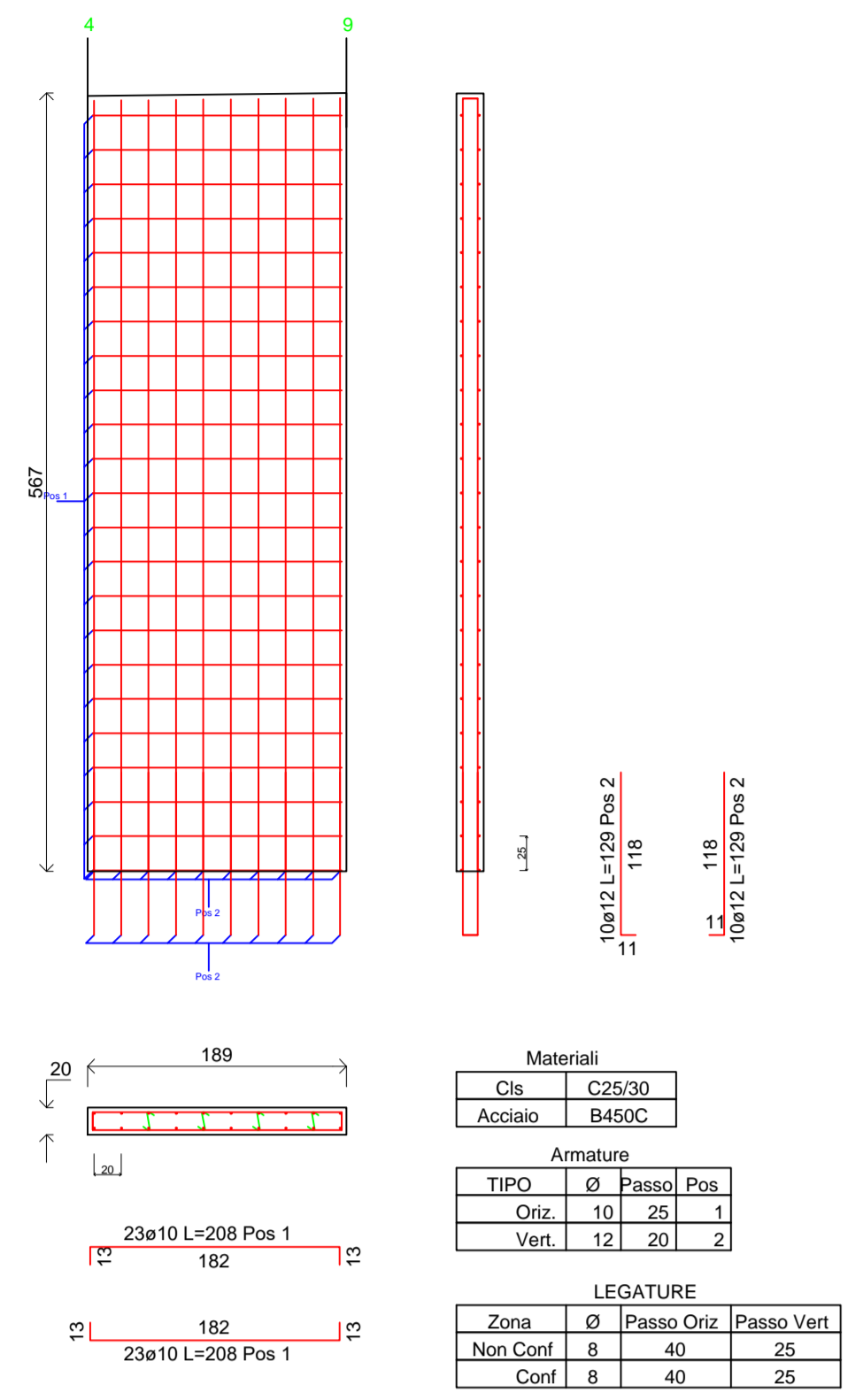
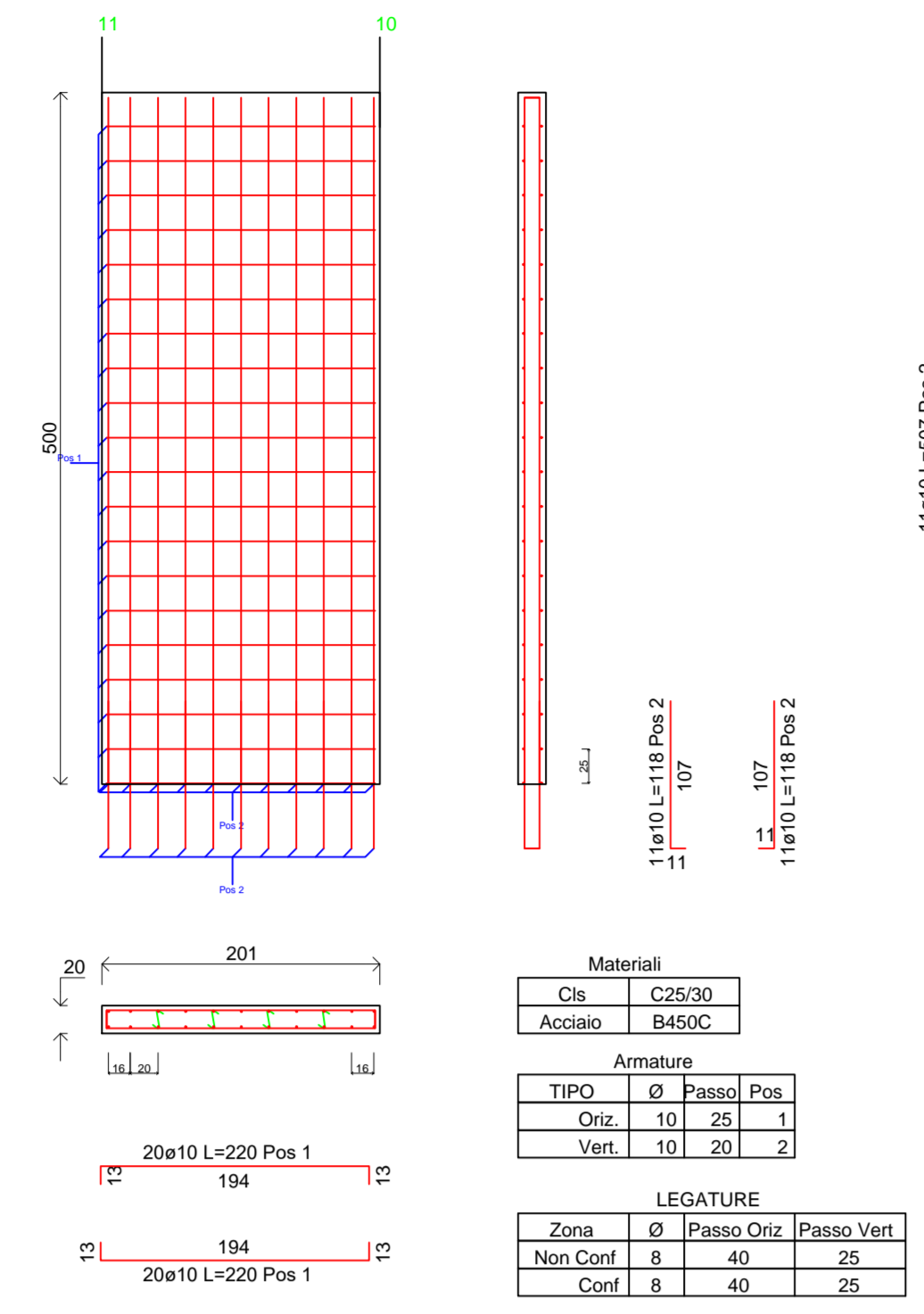


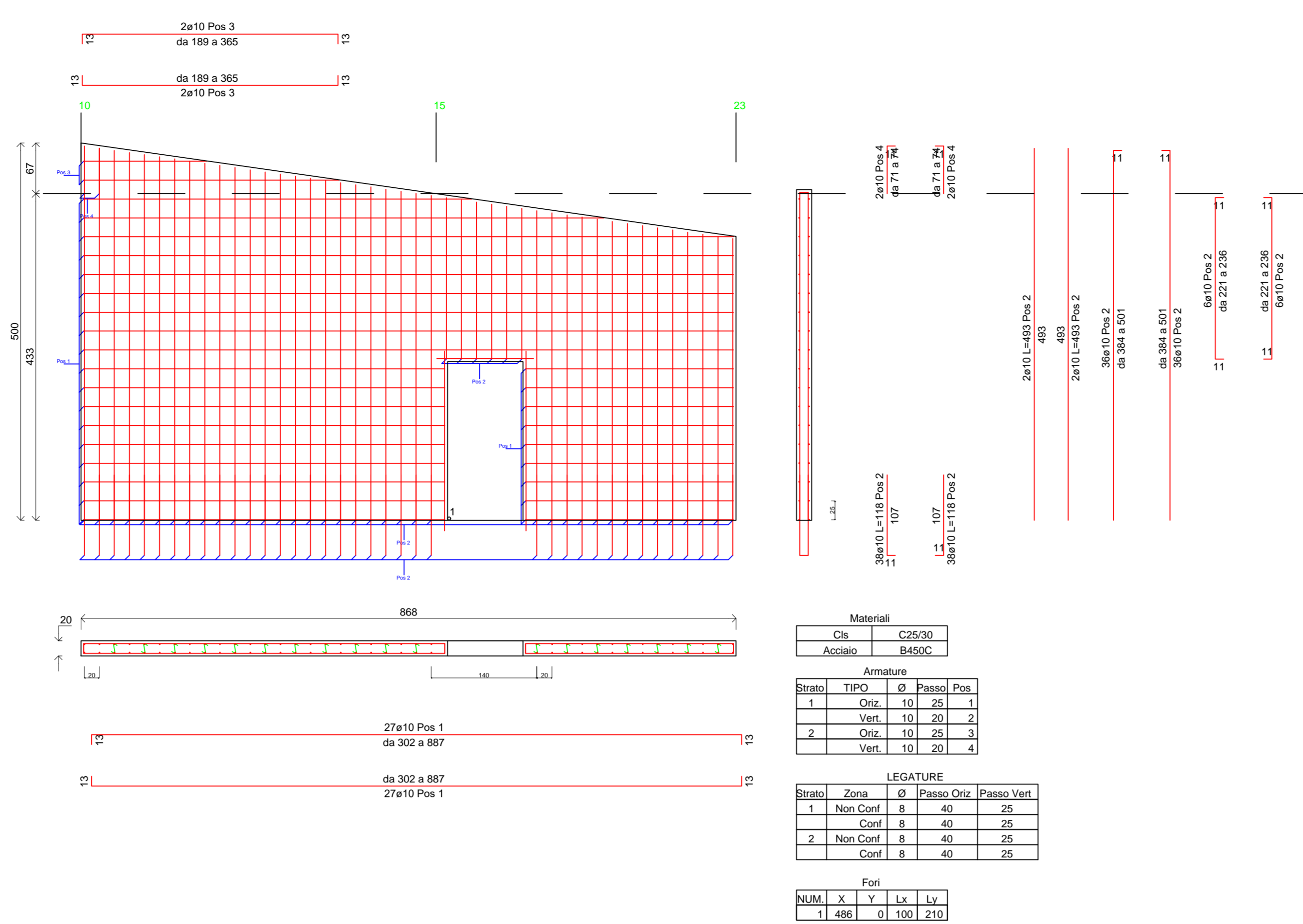
Parete non Dissipativa2 Imp.1 Fili Fissi 4-9



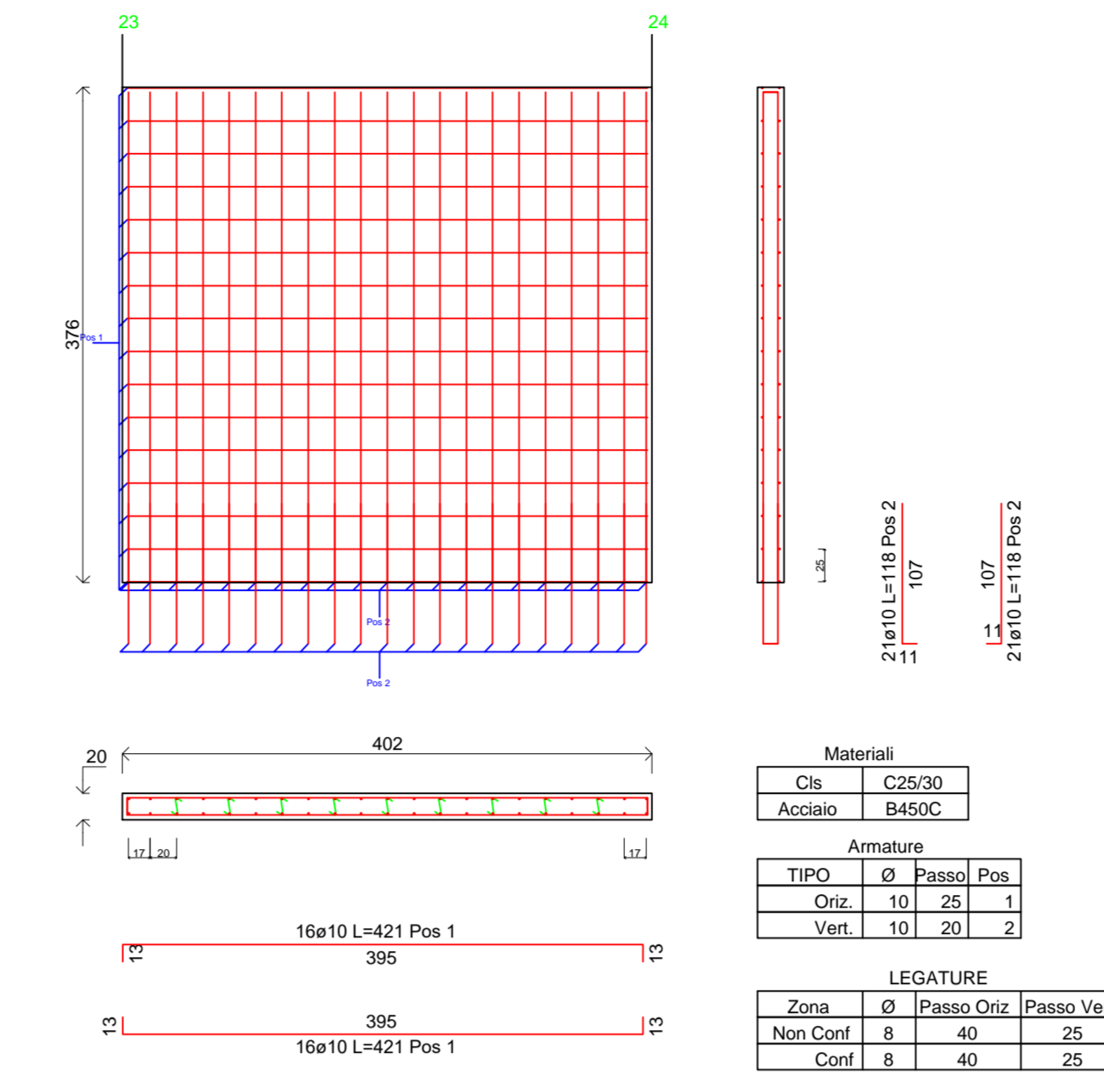
Parete non Dissipativa4 Imp.1 Fili Fissi 11-10



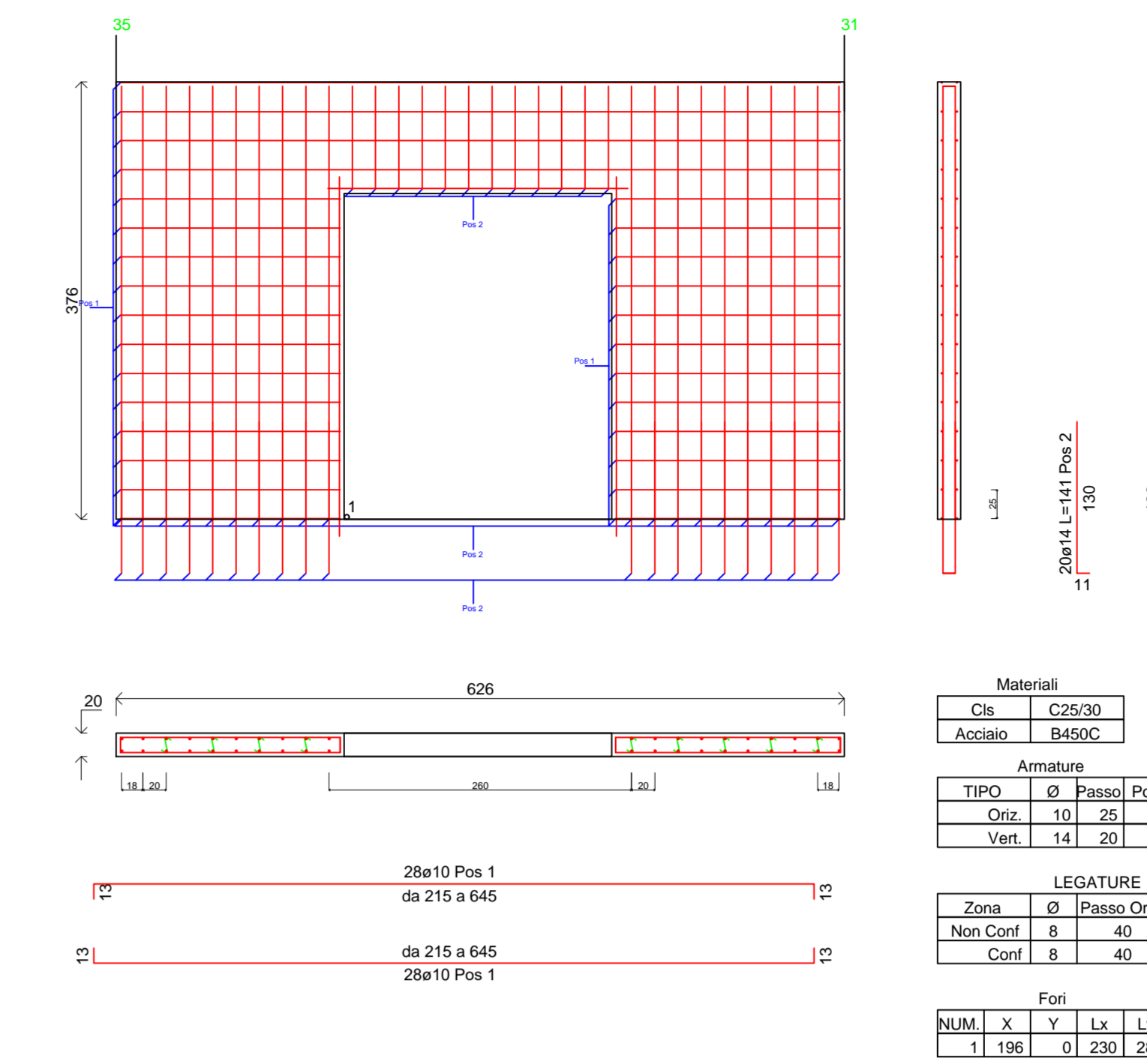
Parete non Dissipativa5 Imp.1 Fili Fissi 10-15-23



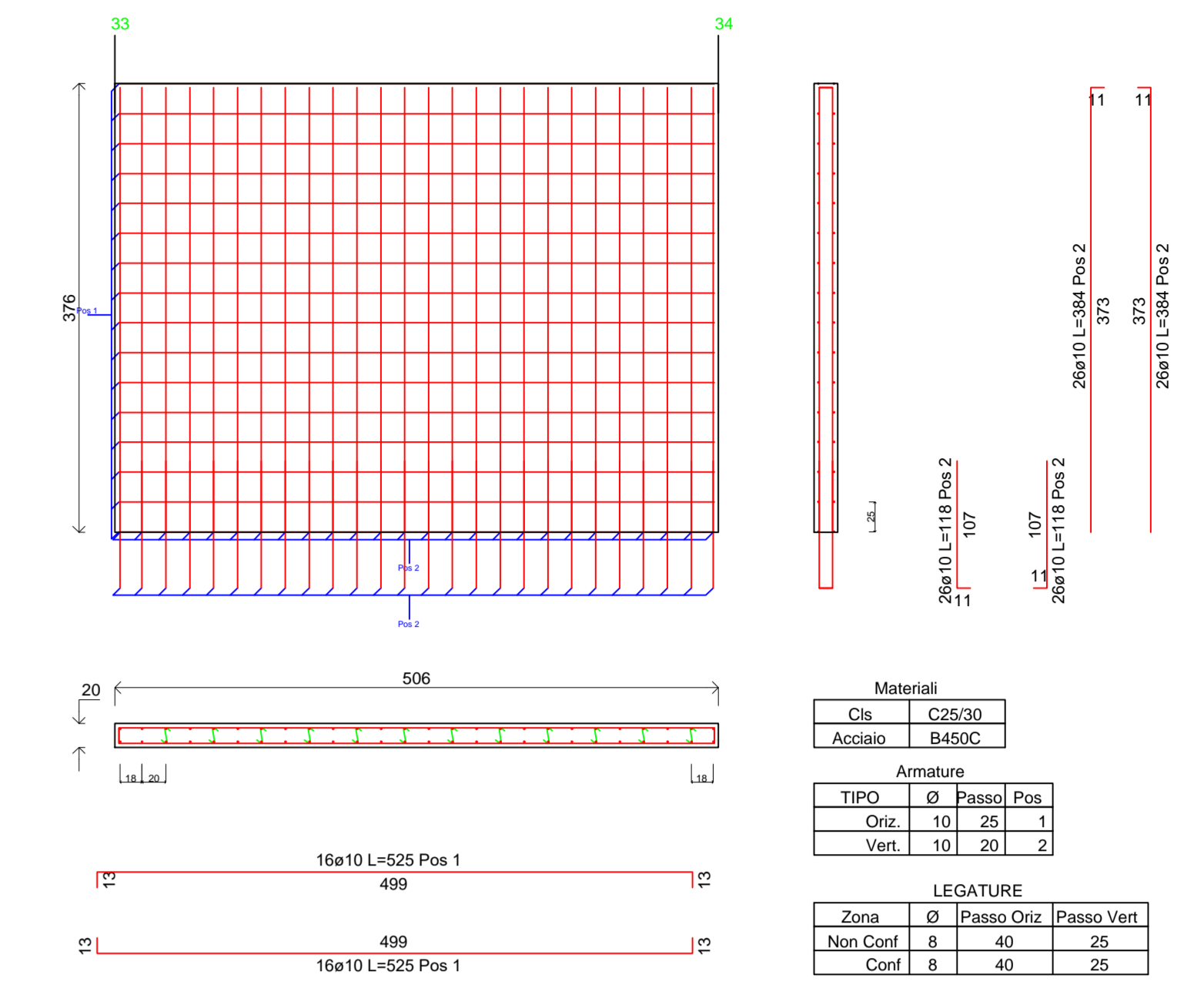
Parete non Dissipativa6 Imp.1 Fili Fissi 23-24



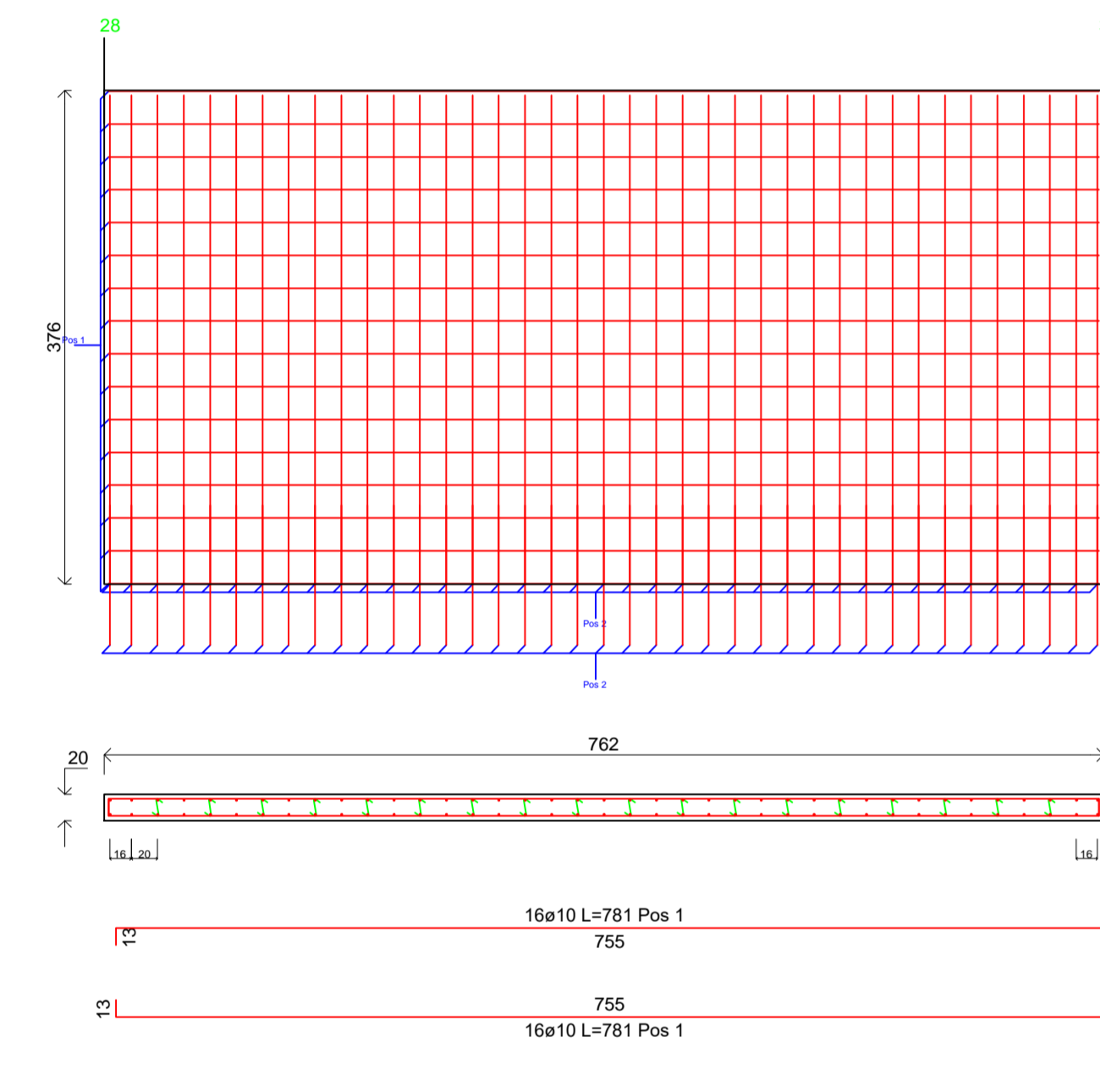
Parete non Dissipativa11 Imp.1 Fili Fissi 35-31



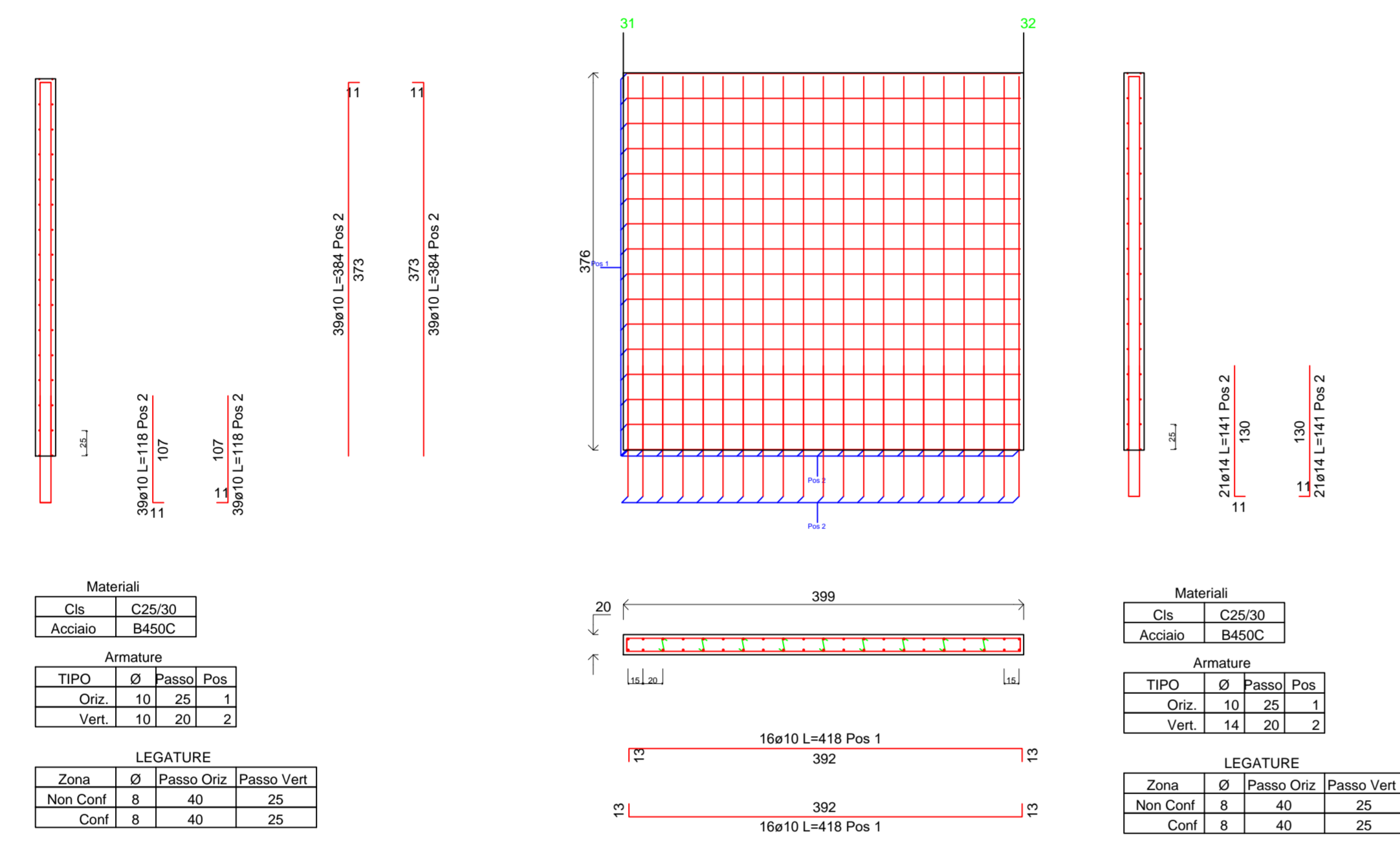
Parete non Dissipativa13 Imp.1 Fili Fissi 33-34



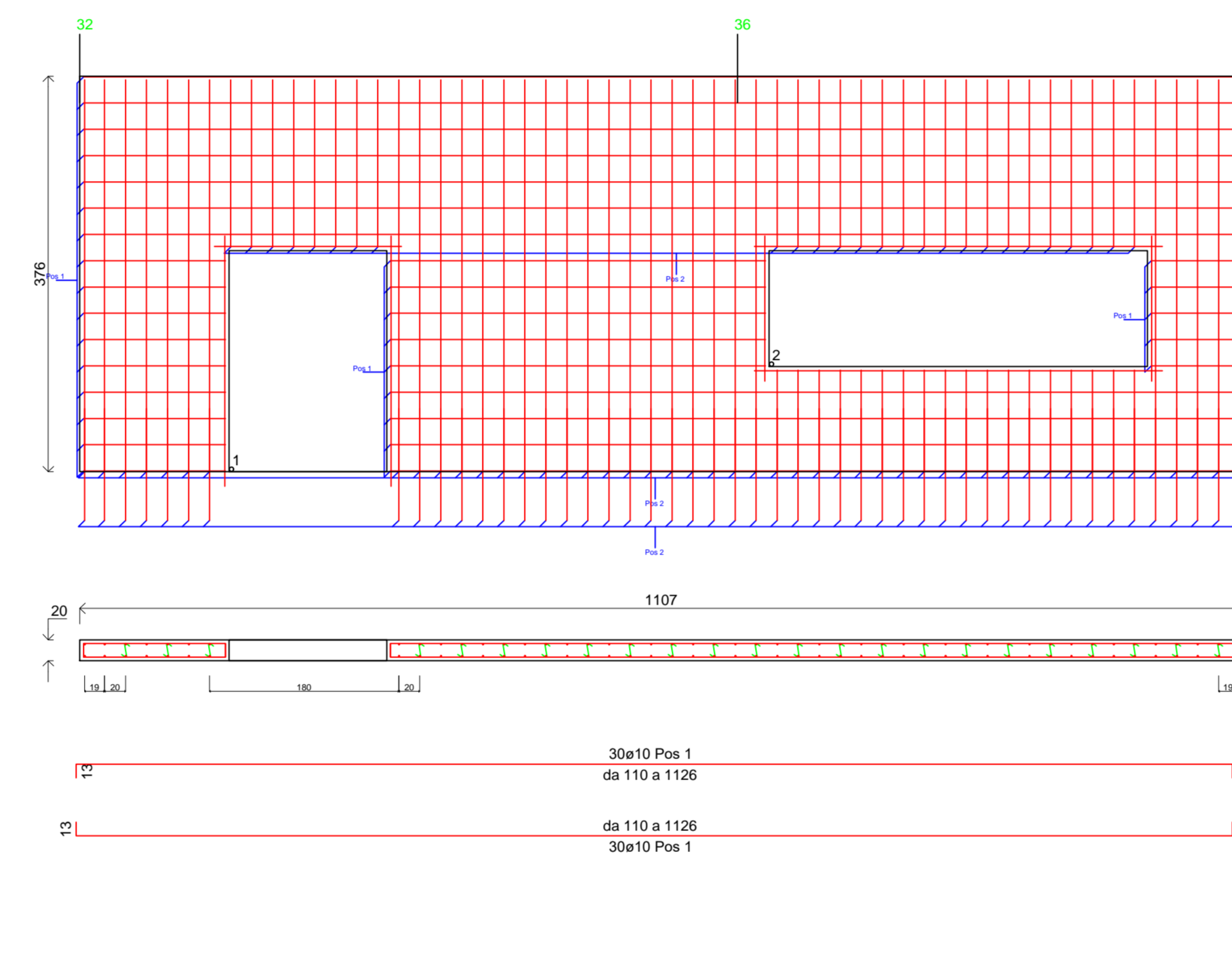
Parete non Dissipativa8 Imp.1 Fili Fissi 28-37



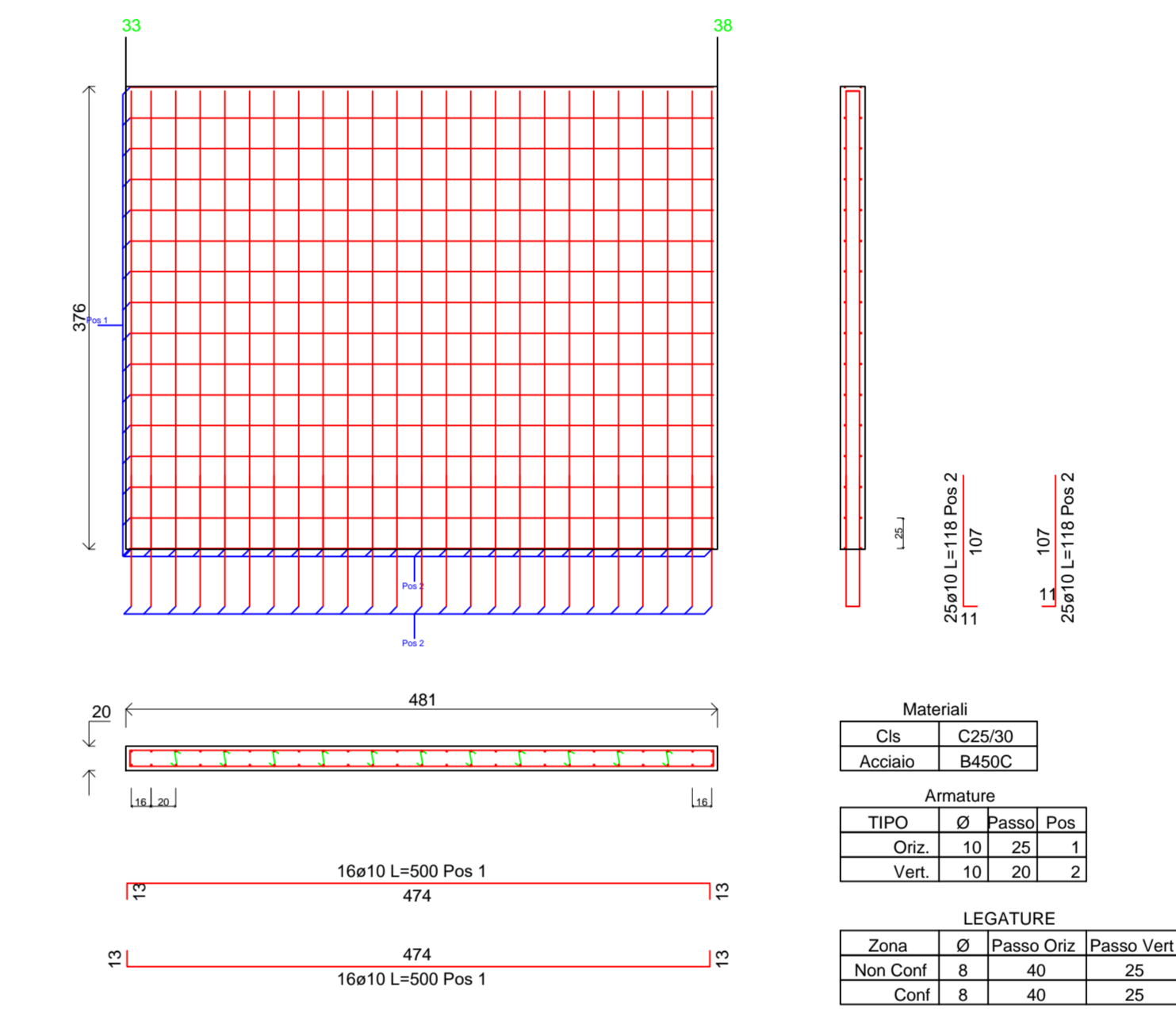
Parete non Dissipativa10 Imp.1 Fili Fissi 31-32



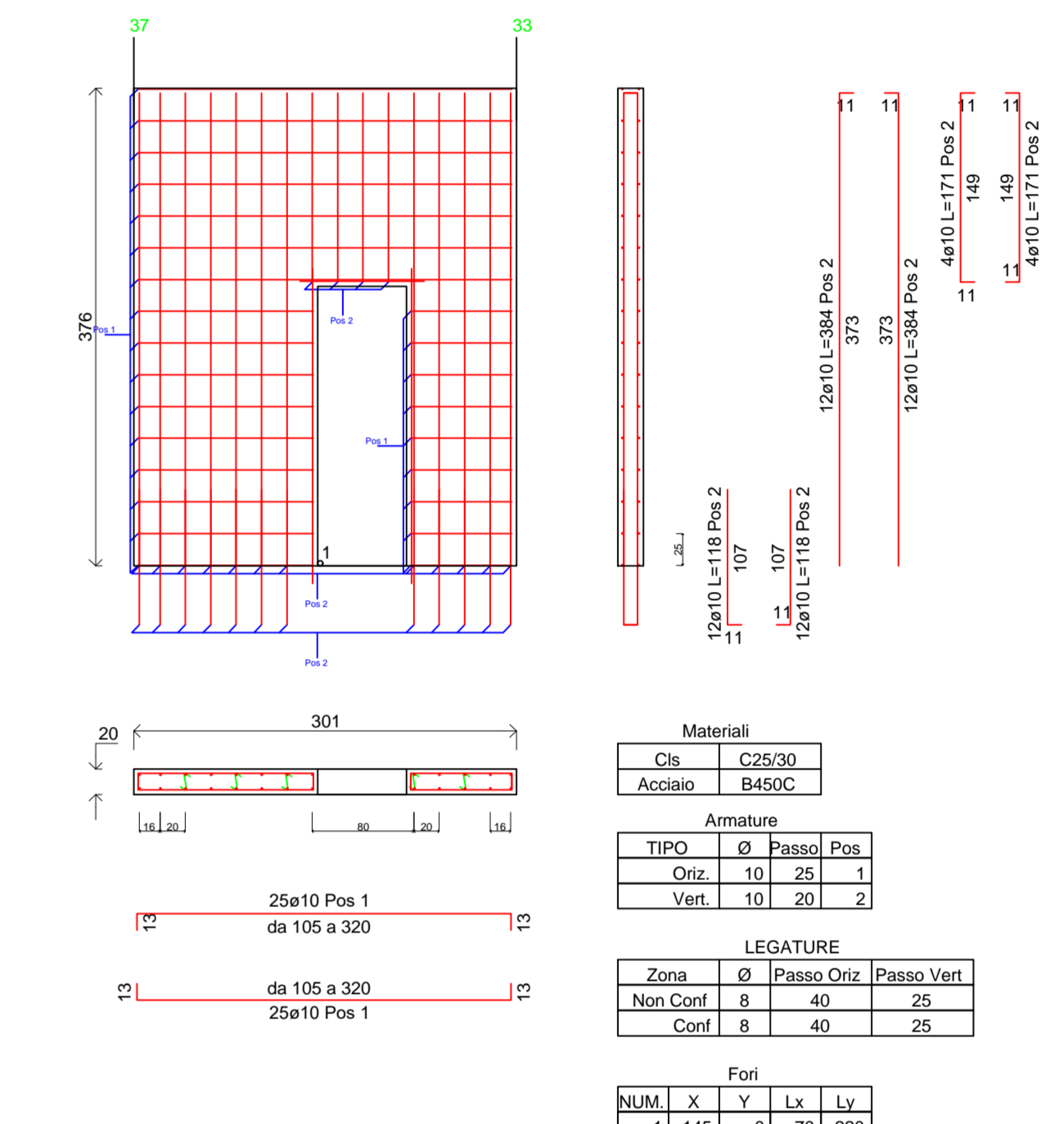
Parete non Dissipativa12 Imp.1 Fili Fissi 32-36-41



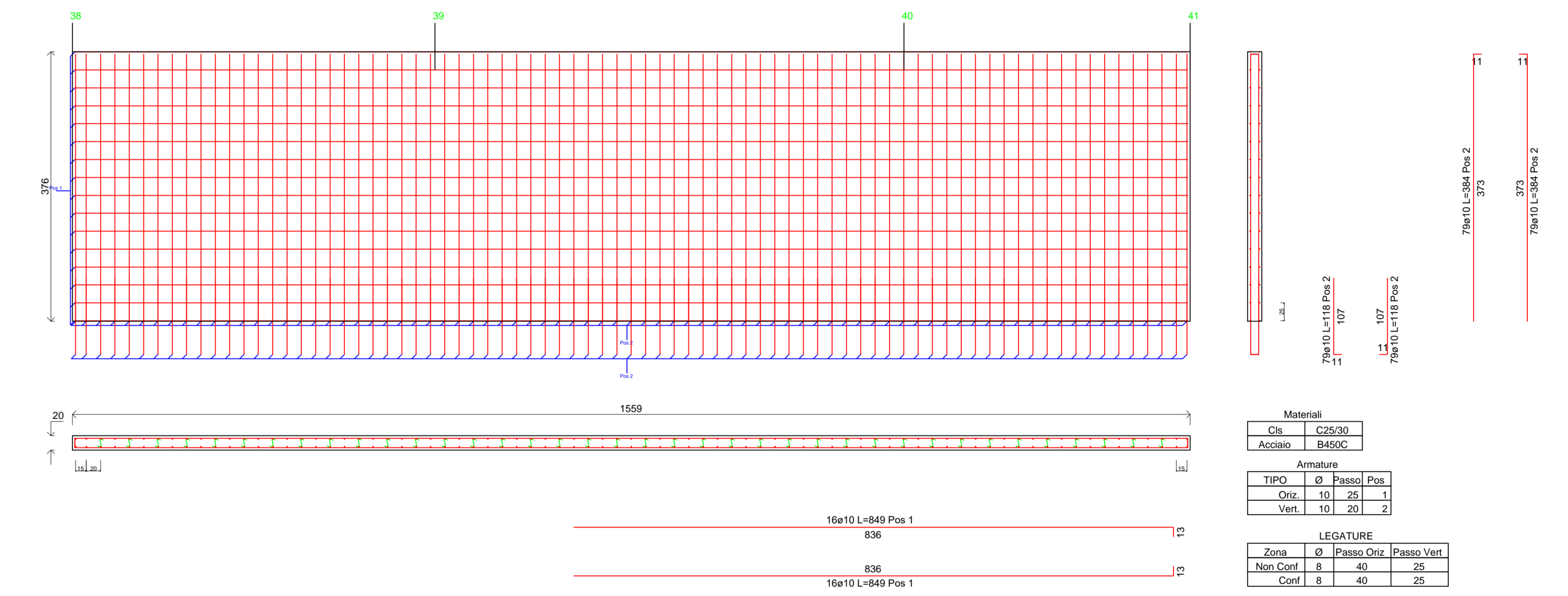
Parete non Dissipativa15 Imp.1 Fili Fissi 33-38



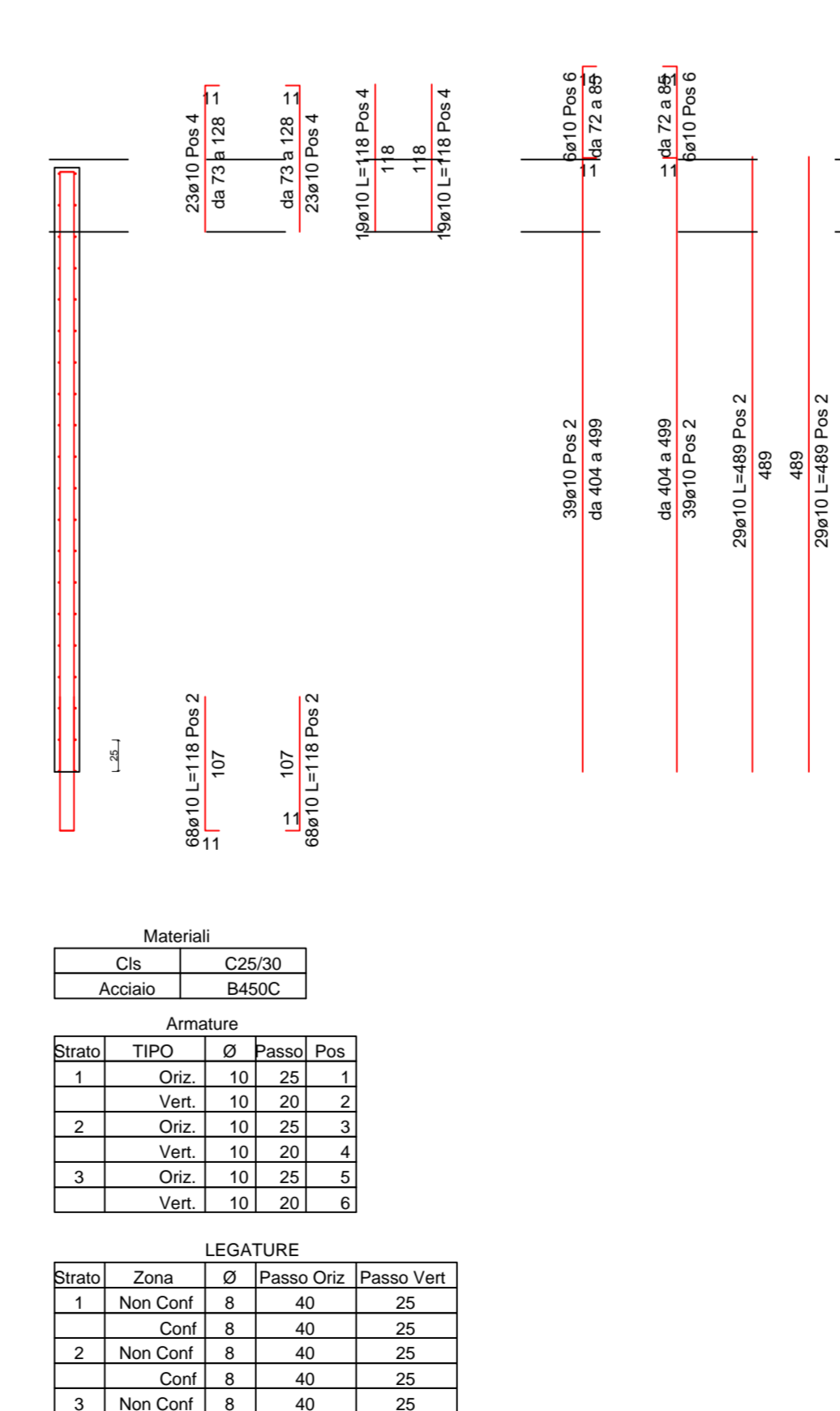
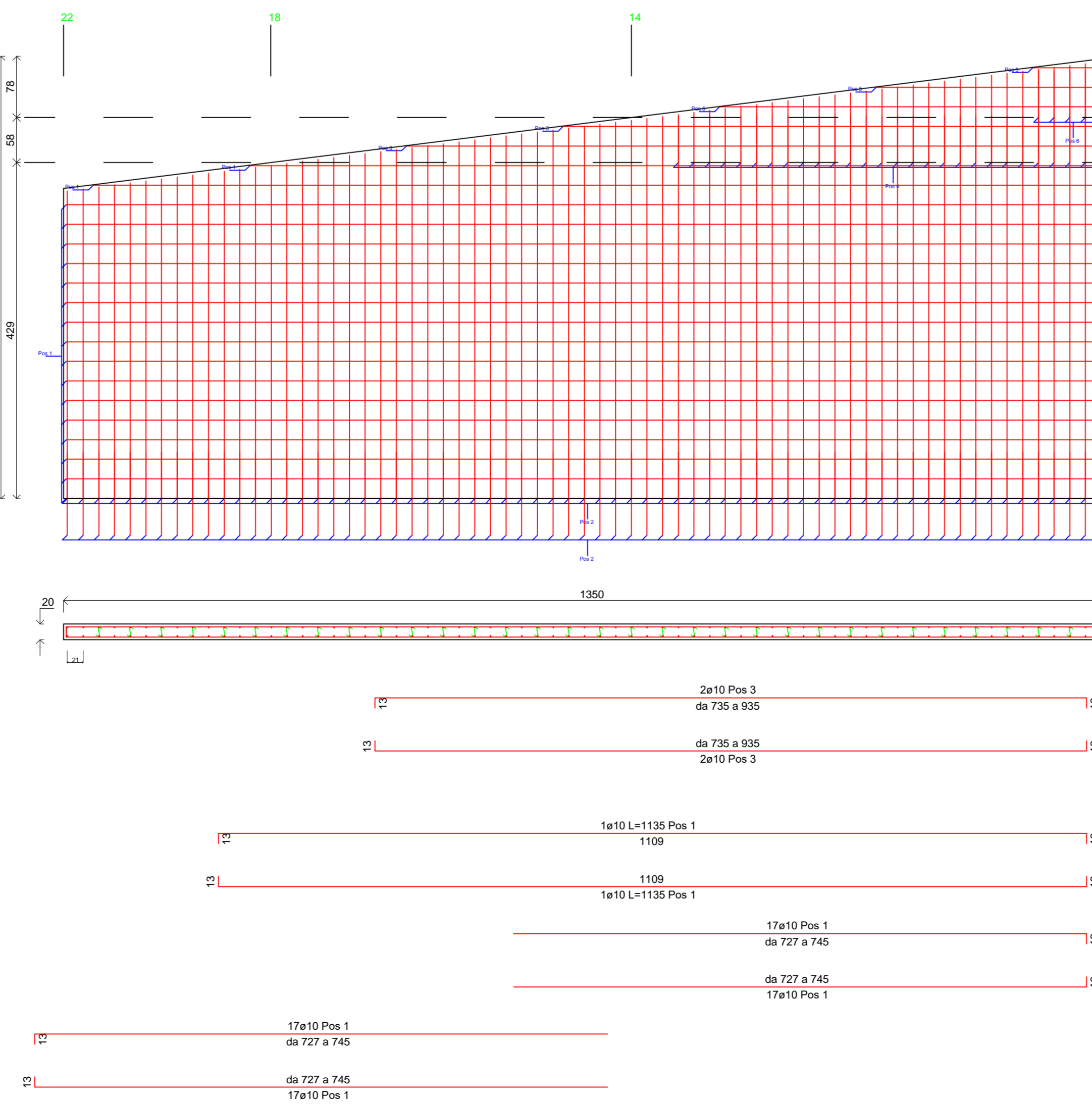
Parete non Dissipativa14 Imp.1 Fili Fissi 37-33



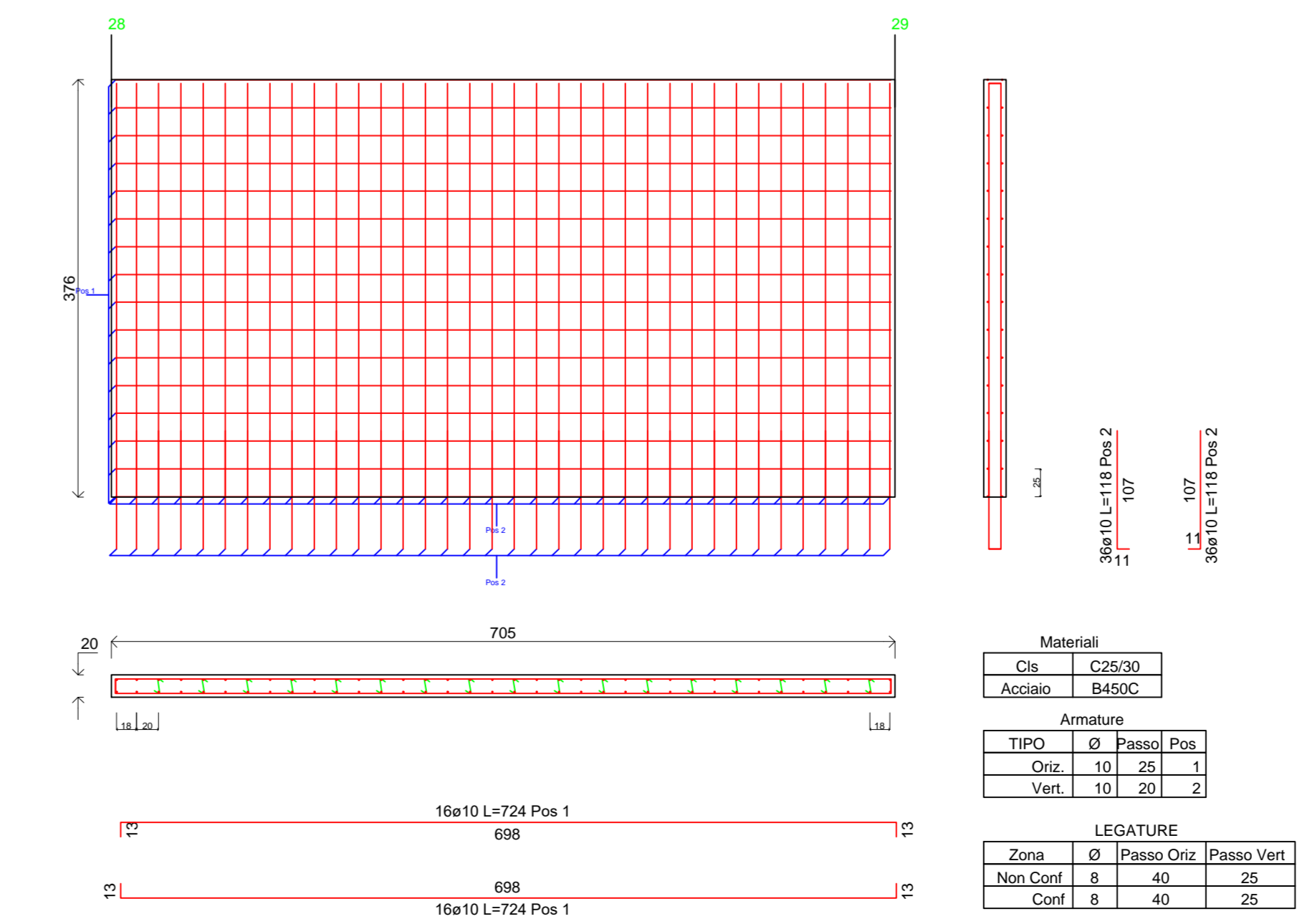
Parete non Dissipativa16 Imp.1 Fili Fissi 38-39-40-41



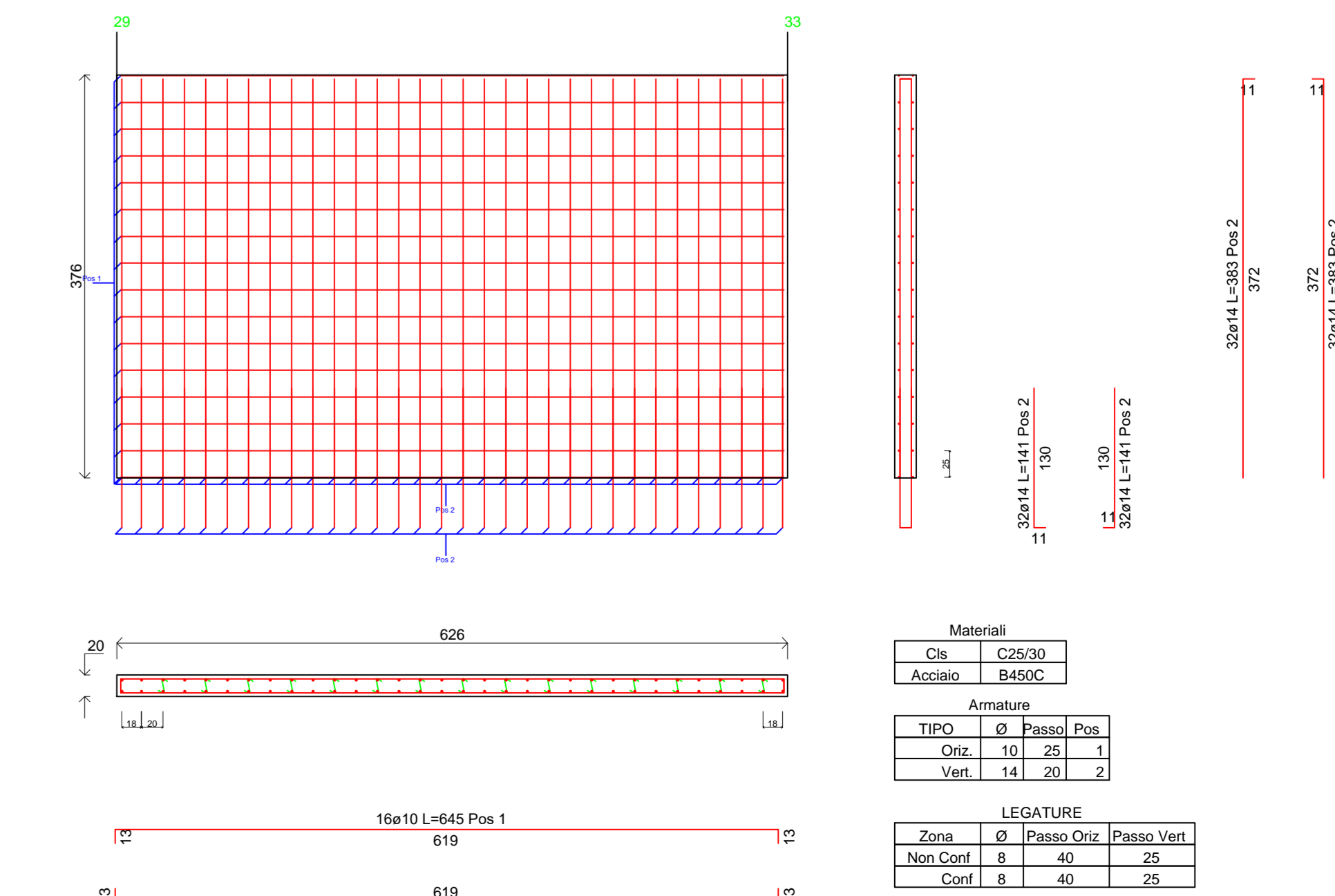
Parete non Dissipativa3 Imp.1 Fili Fissi 22-18-14-5



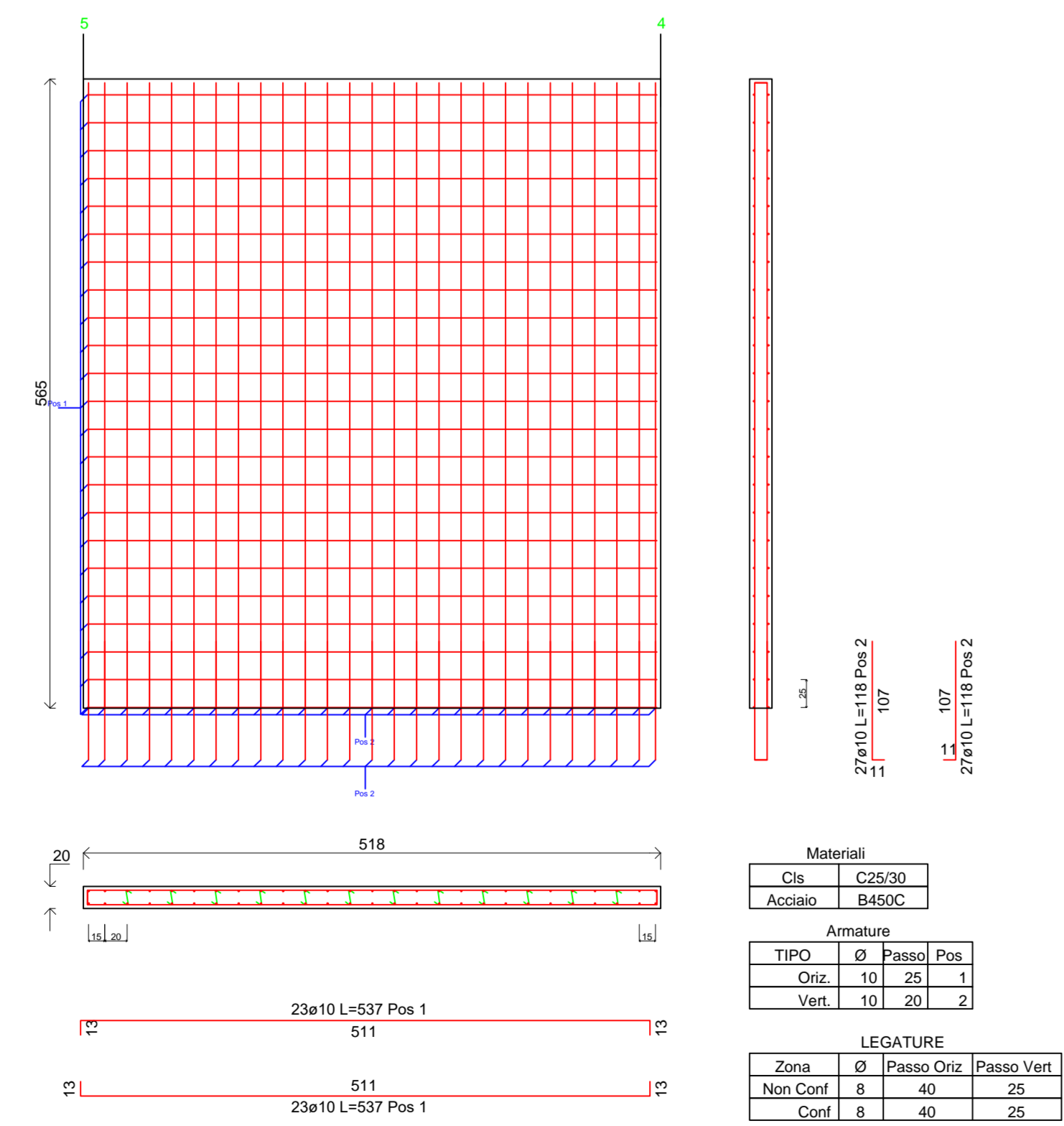
Parete non Dissipativa7 Imp.1 Fili Fissi 28-29



Parete non Dissipativa9 Imp.1 Fili Fissi 29-33



Parete non Dissipativa1 Imp.1 Fili Fissi 5-4



Stazione Appaltante Regione Siciliana Comune di S. Stefano di Camastra Provincia di Messina

Procedura aperta ex art. 183 commi 1-14 d.lgs. 50/2016 s.m.i. per l'affidamento in project financing della concessione di lavori pubblici avente per oggetto la progettazione definitiva ed esecutiva, l'esecuzione dei lavori per la REALIZZAZIONE DEL PORTO TURISTICO E DELLE OPERE CONNESSE NEL COMUNE DI SANTO STEFANO DI CAMASTRA nonché della loro gestione economico-finanziaria C.U.P. H21107000030003 C.I.G. 67535662F8

**PROGETTO DEFINITIVO**

Concessionario Individuo **bruno** **teodoro** Rappresentante legale: Cono Bruno

Progettista indicato **SYMPHAX** **ACQUA TECNO** Dott. Ing. Paolo Turbolenzo

Via Campidoglio, 70 98076 Sant'Agata di Militello (ME) C.U.P. H21107000030003

Titolo elaborato **EDIFICIO COMMERCIALE** **PARETI ESECUTIVI DI CANTIERE**

Elaborato **13.4.ps - ECM**

Scala

Data: Giugno 2017