



Stazione Appaltante
 Regione Siciliana
Comune di S. Stefano di Camastra
 Provincia di Messina



Procedura aperta ex art. 183 commi 1-14 d.lgs. 50/2016 s.m.i. per l'affidamento in project financing della concessione di lavori pubblici avente per oggetto la progettazione definitiva ed esecutiva, l'esecuzione dei lavori per la **REALIZZAZIONE DEL PORTO TURISTICO E DELLE OPERE CONNESSE NEL COMUNE DI SANTO STEFANO DI CAMASTRA** nonché della loro gestione economico-finanziaria

C.I.G.67535662F8

C.U.P.H21H07000030003

PROGETTO DEFINITIVO

Concessionario Individuato



Rappresentante legale: Cono Bruno

Via Campidoglio, 70 98076 Sant'Agata di Militello (ME)

Titolo elaborato

RISERVA IDRICA

**- CARPENTERIE
 - ESECUTIVI DI CANTIERE**

Progettista indicato



Dott. Ing. Paolo Turbolente

Via Ajaccio, 14
 00198 Roma



Amministratore Unico:
 Prof. Ing. Vincenzo Cataliotti
 Direttori tecnici:
 Arch. Sebastiano Provenzano
 Prof. Ing. Antonio Cataliotti
 Via Vittorio Emanuele, 492
 90134 Palermo

Elaborato

PD

EG

15.4 - RI

Scala

Data: Giugno 2017

Comune di SANTO STEFANO DI CAMASTRA

Provincia di MESSINA

ESECUTIVI DI CANTIERE

Fondazione

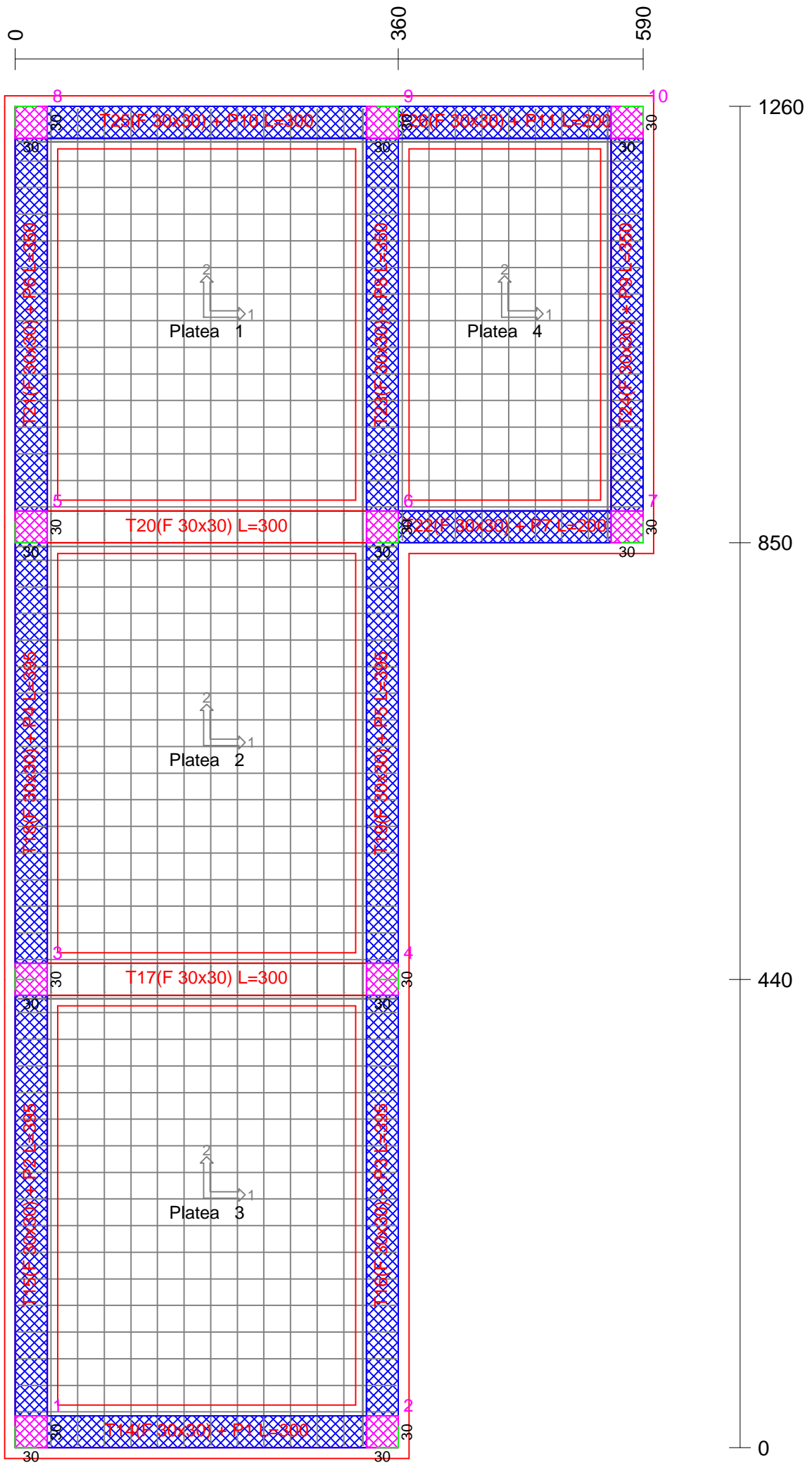
Oggetto: **Calcolo delle strutture in c.a. per la realizzazione di una vasca per acque potabili a servizio del portoturistico**

Ditta: COSTRUZIONI BRUNO TEODORO SPA

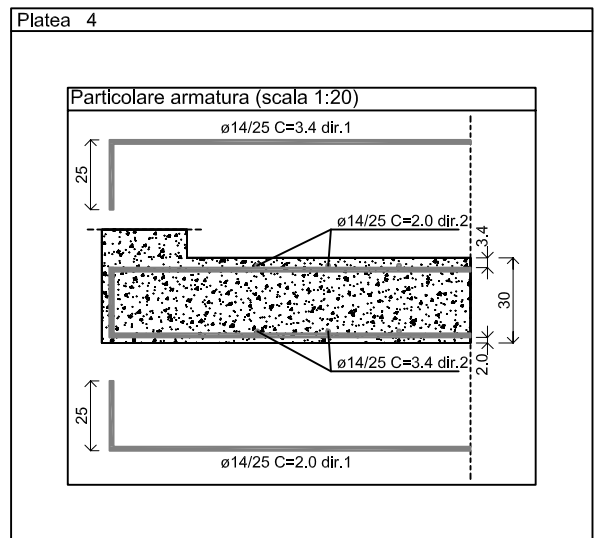
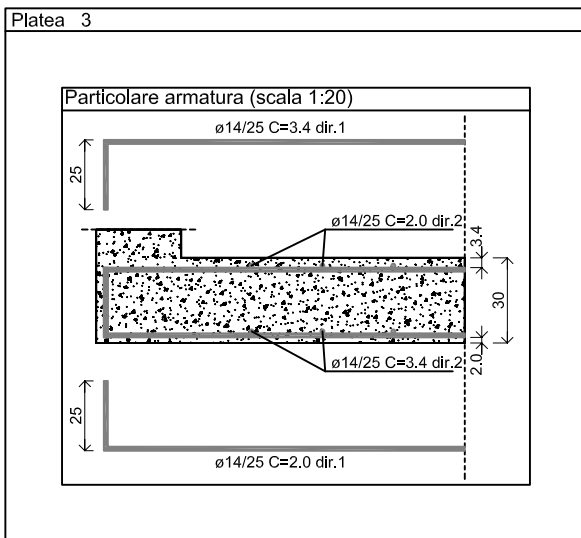
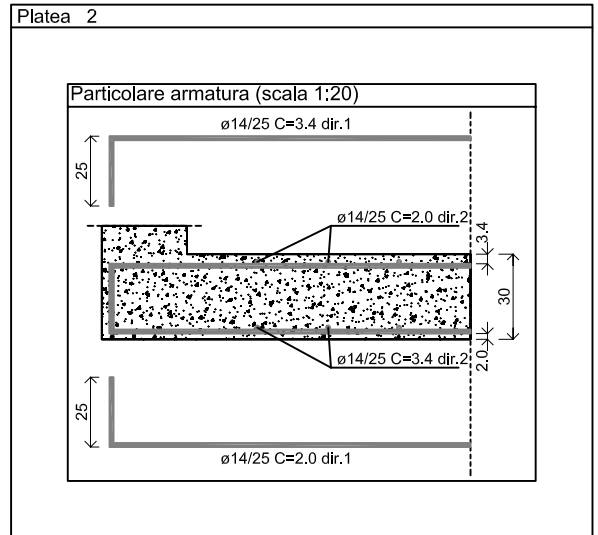
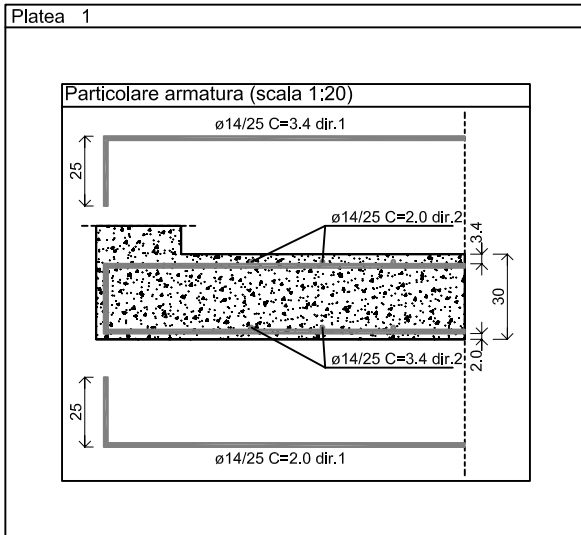
Data: 20/04/2017

Materiali

CLS
C25/30
ACCIAIO LONGITUDINALI
B450C
ACCIAIO STAFFE
B450C



Carpenteria Fond.



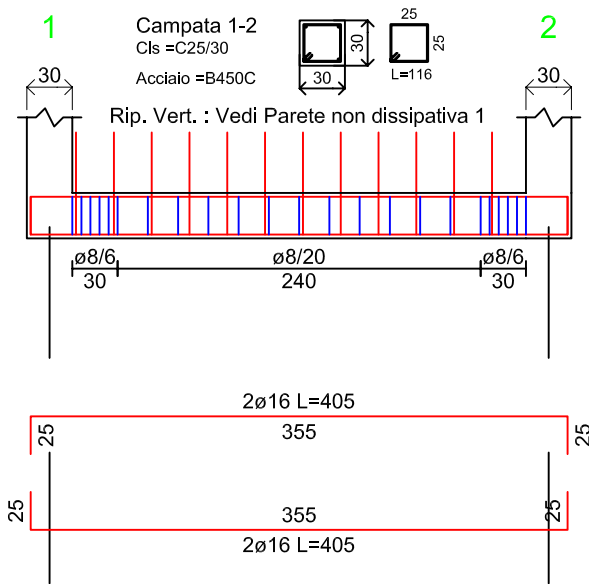
Platea 1												
Armatura a flessione												
Regione	Direzione 1						Direzione 2					
			Estradosso		Intradosso				Estradosso		Intradosso	
	ø[mm]	L[cm]	Cop[cm]	Passo[cm]	Cop[cm]	Passo[cm]	ø[mm]	L[cm]	Cop[cm]	Passo[cm]	Cop[cm]	Passo[cm]
Platea	14	403	3.4	25	2.0	25	14	453	2.0	25	3.4	25

Platea 2												
Armatura a flessione												
Regione	Direzione 1						Direzione 2					
			Estradosso		Intradosso				Estradosso		Intradosso	
	ø[mm]	L[cm]	Cop[cm]	Passo[cm]	Cop[cm]	Passo[cm]	ø[mm]	L[cm]	Cop[cm]	Passo[cm]	Cop[cm]	Passo[cm]
Platea	14	403	3.4	25	2.0	25	14	498	2.0	25	3.4	25

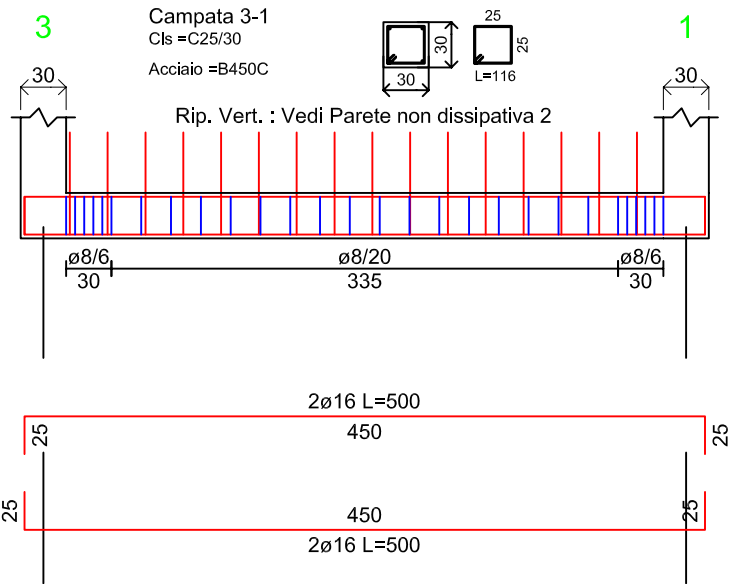
Platea 3												
Armatura a flessione												
Regione	Direzione 1						Direzione 2					
			Estradosso		Intradosso				Estradosso		Intradosso	
	ø[mm]	L[cm]	Cop[cm]	Passo[cm]	Cop[cm]	Passo[cm]	ø[mm]	L[cm]	Cop[cm]	Passo[cm]	Cop[cm]	Passo[cm]
Platea	14	403	3.4	25	2.0	25	14	498	2.0	25	3.4	25

Platea 4												
Armatura a flessione												
Regione	Direzione 1						Direzione 2					
			Estradosso		Intradosso				Estradosso		Intradosso	
	ø[mm]	L[cm]	Cop[cm]	Passo[cm]	Cop[cm]	Passo[cm]	ø[mm]	L[cm]	Cop[cm]	Passo[cm]	Cop[cm]	Passo[cm]
Platea	14	303	3.4	25	2.0	25	14	453	2.0	25	3.4	25

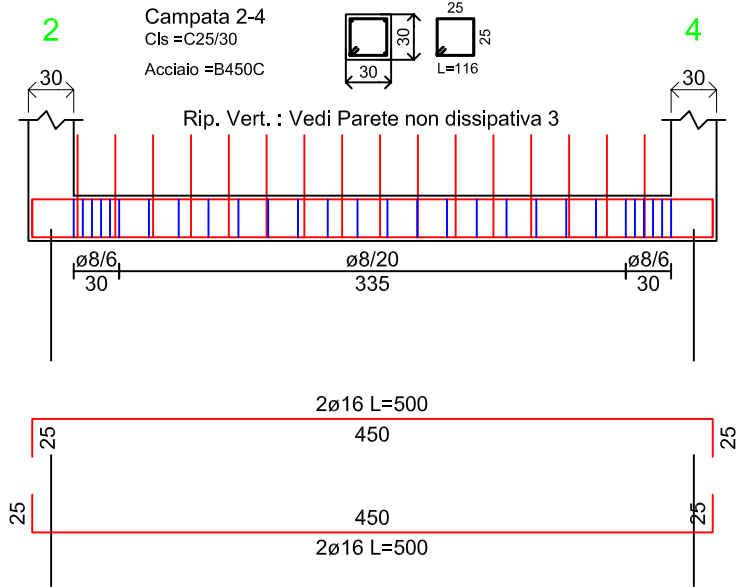
Travata 1 Fond.



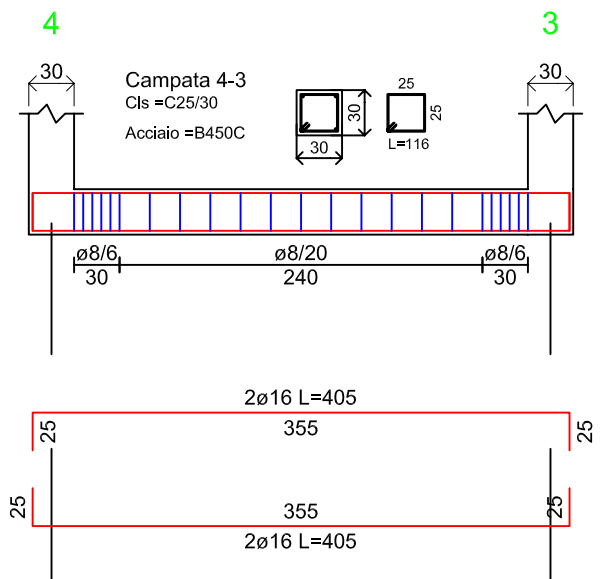
Travata 2 Fond.



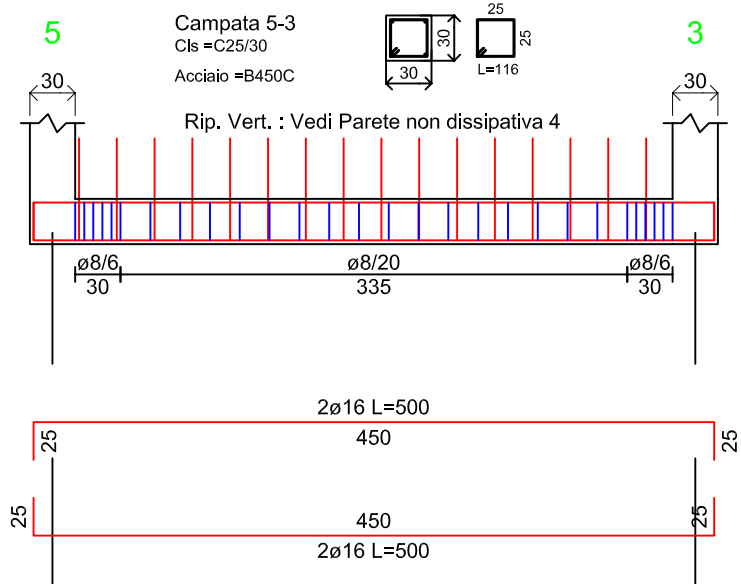
Travata 3 Fond.



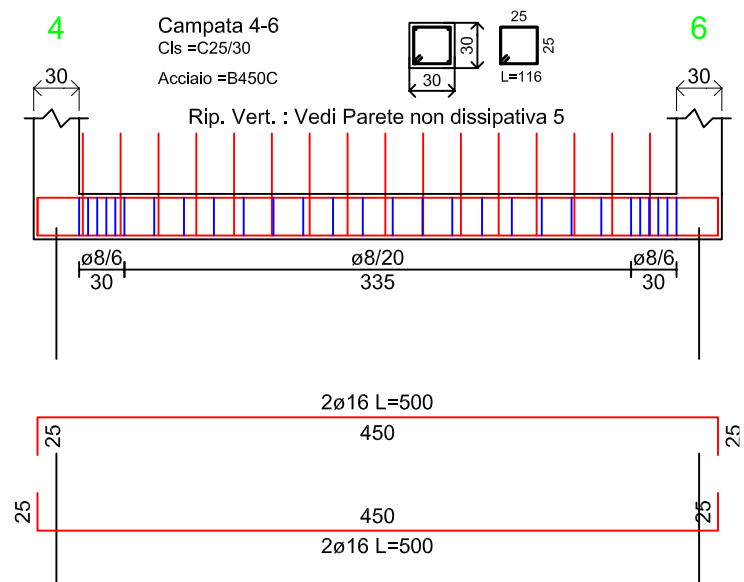
Travata 4 Fond.



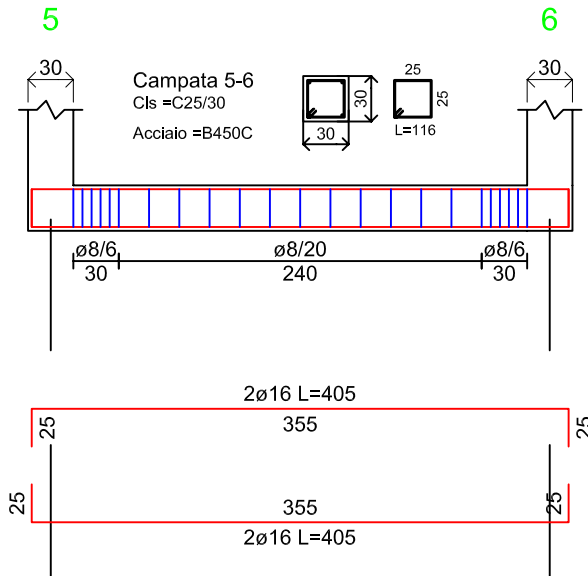
Travata 5 Fond.



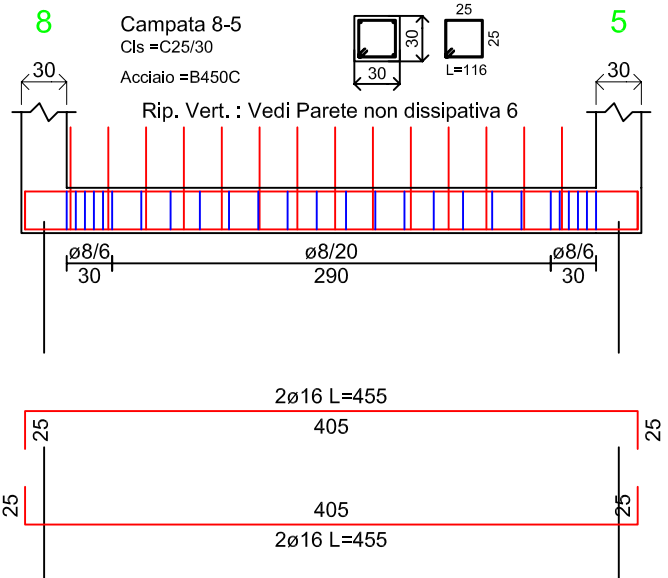
Travata 6 Fond.



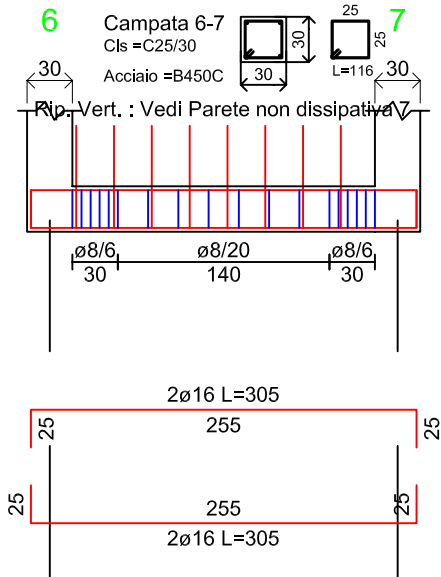
Travata 7 Fond.



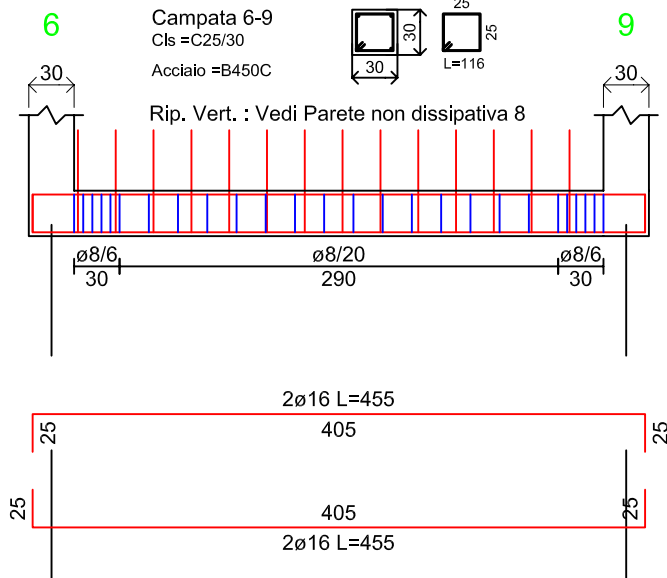
Travata 8 Fond.



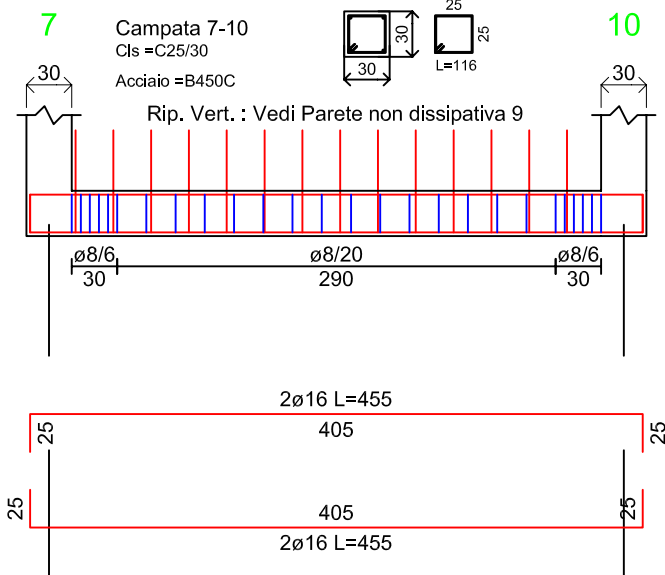
Travata 9 Fond.



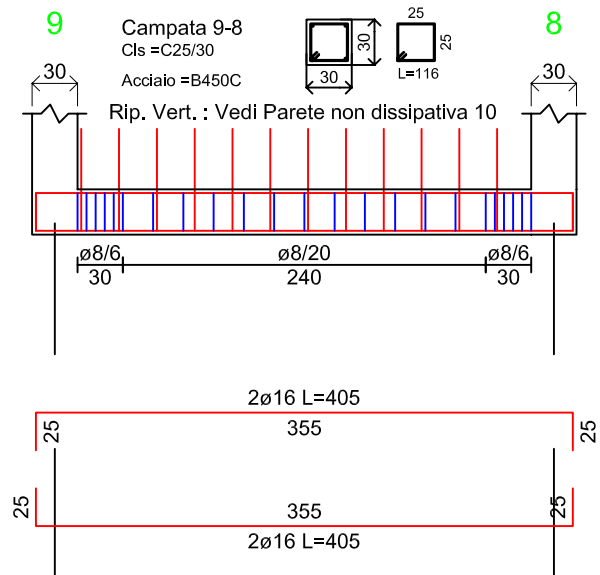
Travata 10 Fond.



Travata 11 Fond.



Travata 12 Fond.



Travata 13 Fond.

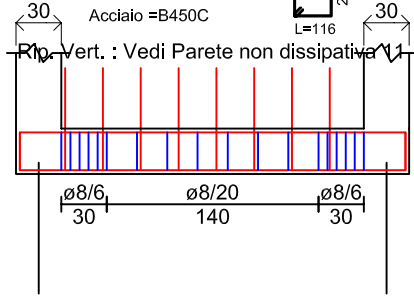
10

Campata 10-9

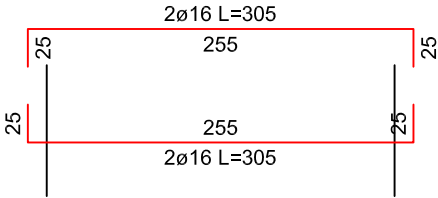
Cls = C25/30

Acciaio = B450C

9



Rip. Vert. : Vedi Parete non dissipativa



Comune di SANTO STEFANO DI CAMASTRA

Provincia di MESSINA

ESECUTIVI DI CANTIERE

Piano 1

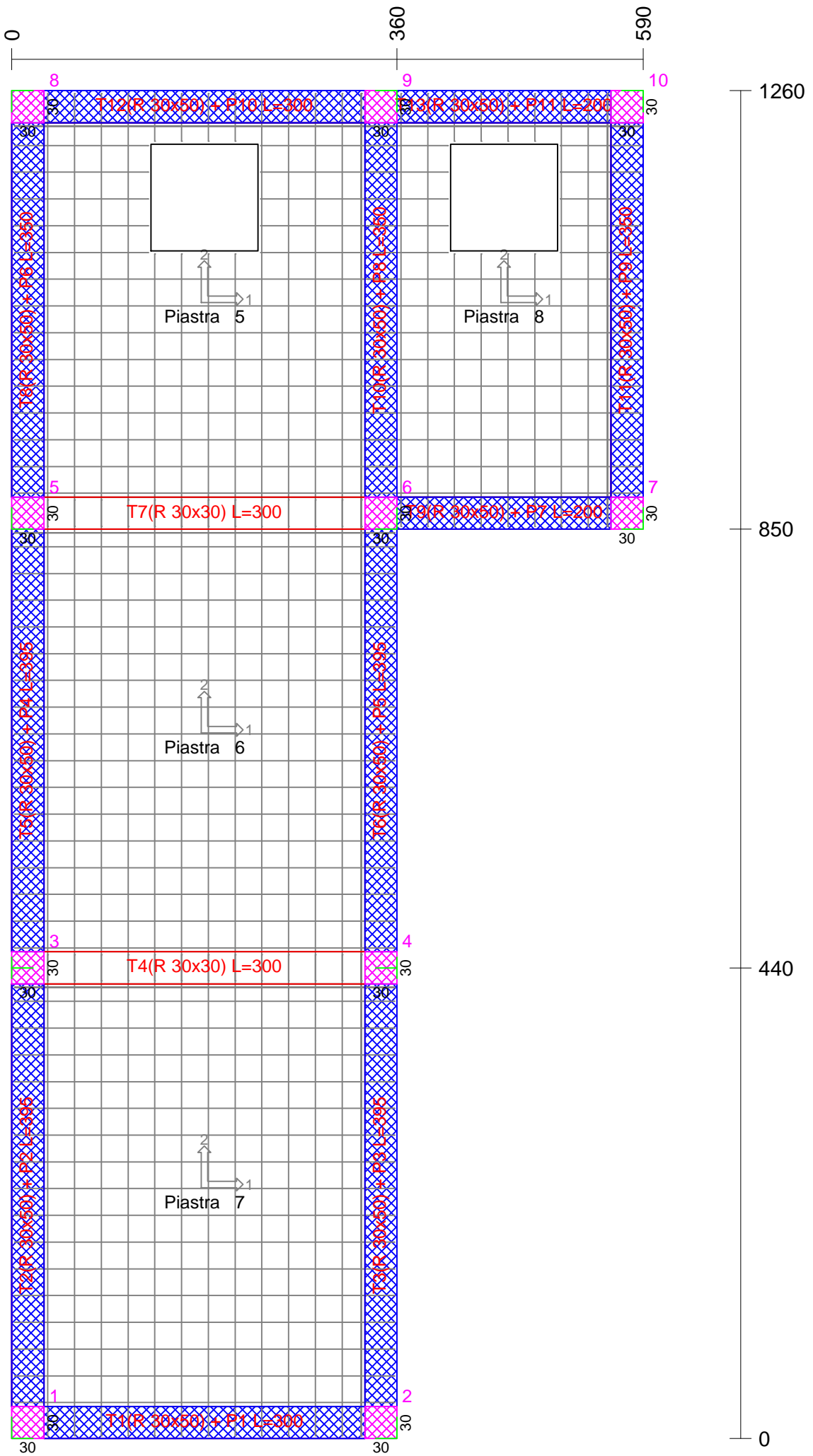
Oggetto: **Calcolo delle strutture in c.a. per la realizzazione di una vasca peracque potabili a servizio del portoturistico**

Ditta: COSTRUZIONI BRUNO TEODORO SPA

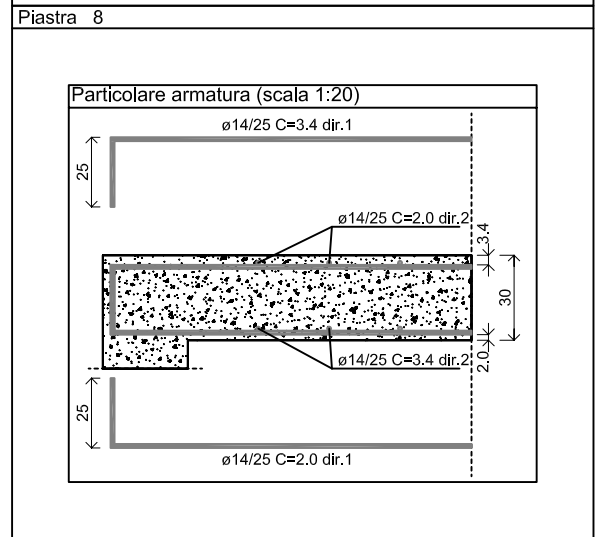
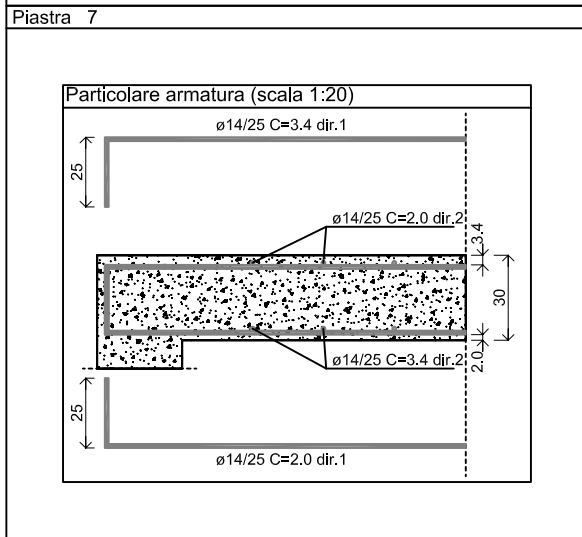
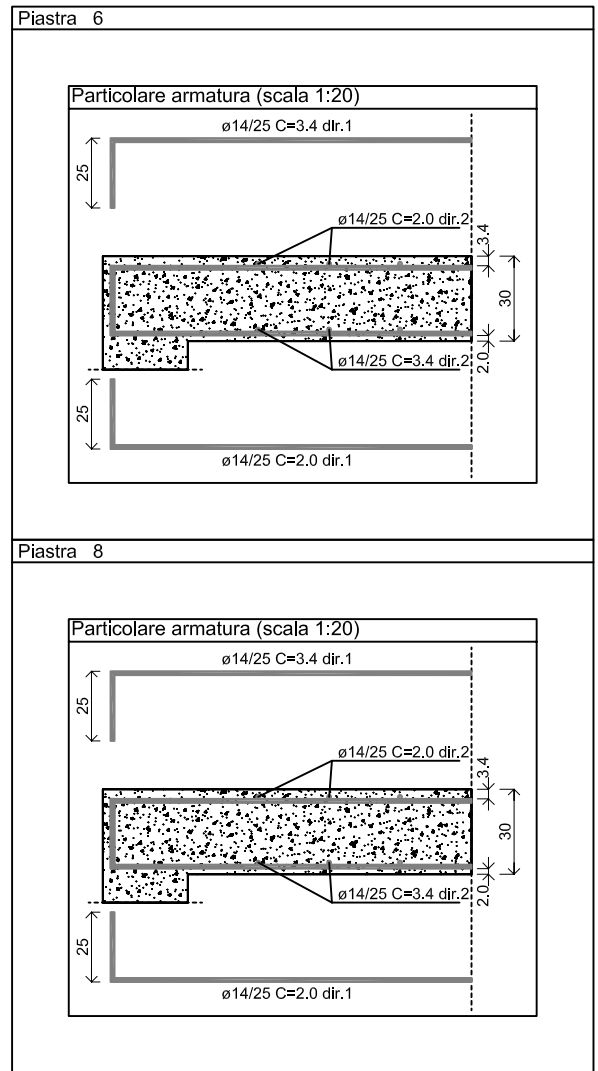
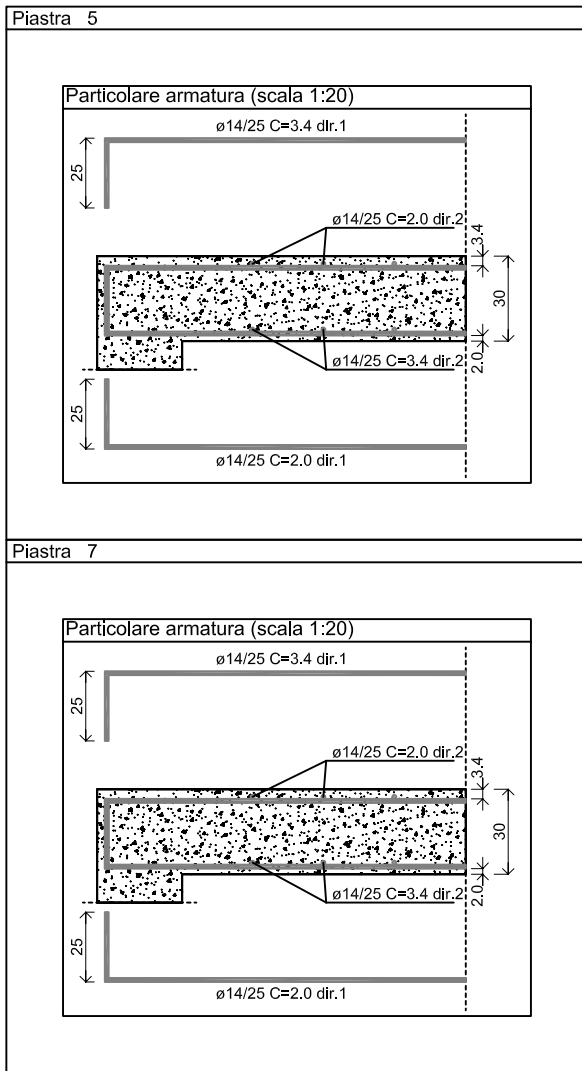
Data: 20/04/2017

Materiali

CLS
C25/30
ACCIAIO LONGITUDINALI
B450C
ACCIAIO STAFFE
B450C



Carpenteria Piano 1



Piastra 5												
Armatura a flessione												
Regione	Direzione 1						Direzione 2					
			Estradosso		Intradosso				Estradosso		Intradosso	
	ø[mm]	L[cm]	Cop[cm]	Passo[cm]	Cop[cm]	Passo[cm]	ø[mm]	L[cm]	Cop[cm]	Passo[cm]	Cop[cm]	Passo[cm]
Piastra	14	403	3.4	25	2.0	25	14	453	2.0	25	3.4	25

Piastra 6												
Armatura a flessione												
Regione	Direzione 1						Direzione 2					
			Estradosso		Intradosso				Estradosso		Intradosso	
	ø[mm]	L[cm]	Cop[cm]	Passo[cm]	Cop[cm]	Passo[cm]	ø[mm]	L[cm]	Cop[cm]	Passo[cm]	Cop[cm]	Passo[cm]
Piastra	14	403	3.4	25	2.0	25	14	498	2.0	25	3.4	25

Piastra 7												
Armatura a flessione												
Regione	Direzione 1						Direzione 2					
			Estradosso		Intradosso				Estradosso		Intradosso	
	ø[mm]	L[cm]	Cop[cm]	Passo[cm]	Cop[cm]	Passo[cm]	ø[mm]	L[cm]	Cop[cm]	Passo[cm]	Cop[cm]	Passo[cm]
Piastra	14	403	3.4	25	2.0	25	14	498	2.0	25	3.4	25

Piastra 8												
Armatura a flessione												
Regione	Direzione 1						Direzione 2					
			Estradosso		Intradosso				Estradosso		Intradosso	
	ø[mm]	L[cm]	Cop[cm]	Passo[cm]	Cop[cm]	Passo[cm]	ø[mm]	L[cm]	Cop[cm]	Passo[cm]	Cop[cm]	Passo[cm]
Piastra	14	303	3.4	25	2.0	25	14	453	2.0	25	3.4	25

PILASTRI: 1-2-3-4-5-6-7-8-9-10
(fili)

Piano 1

Materiali
Cls =C25/30
Acciaio =B450C

STAFFE
Ø 8/12 cm Da Q= 0 a Q= 47
Ø 8/19 cm Da Q= 47 a Q= 233
Ø 8/12 cm Da Q= 233 a Q= 280
Ø 8/12 cm Da Q= 280 a Q= 330

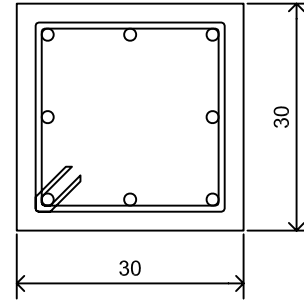
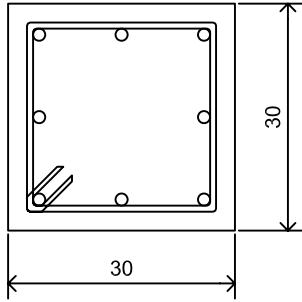
STAFFE TIPO
1 Ø 8 (25x 25 L= 116)

PIEDE (Q=0)

TESTA (Q=330)

Diritti: Ø 8Ø16

Copriferro=2.5 Diritti: Ø 8Ø16



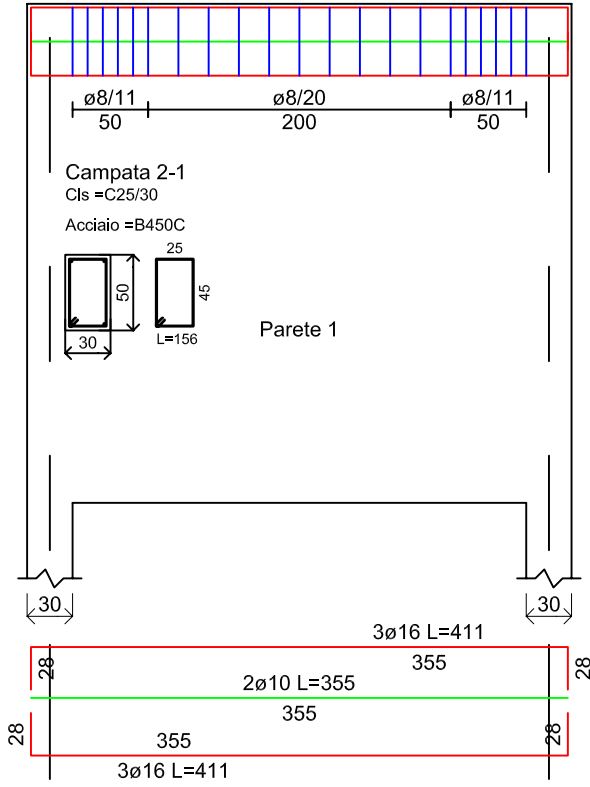
Scala 1:10

Travata 14 Piano 1

2
Q=330



1
Q=330

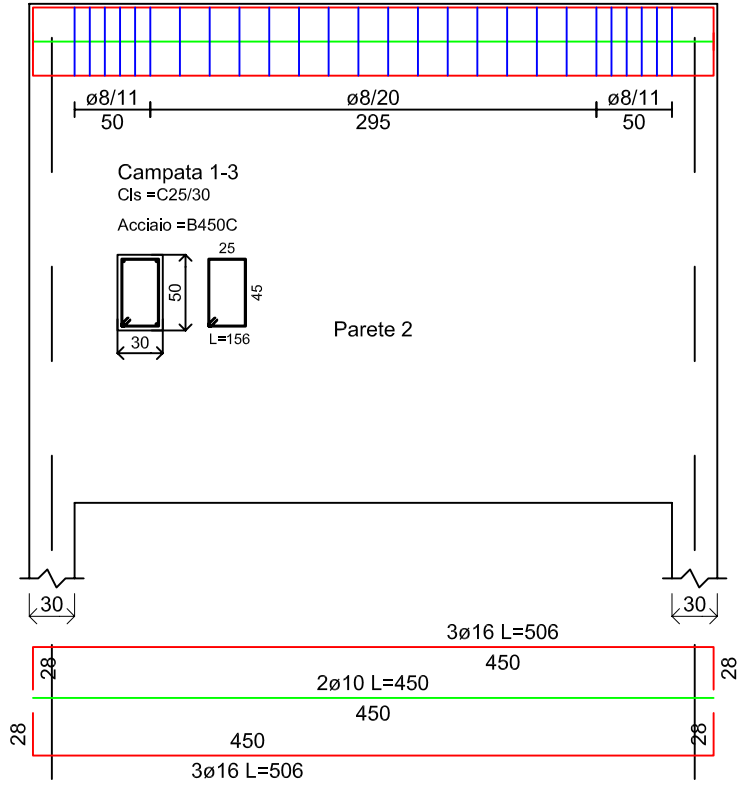


Travata 15 Piano 1

1
Q=330



3
Q=330

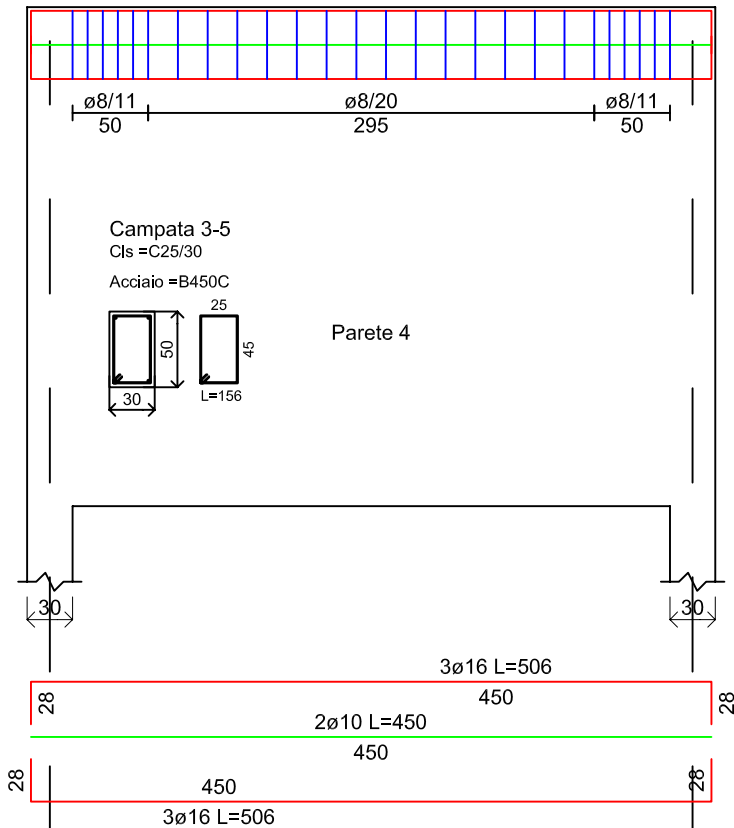


Travata 18 Piano 1

3
Q=330



5
Q=330

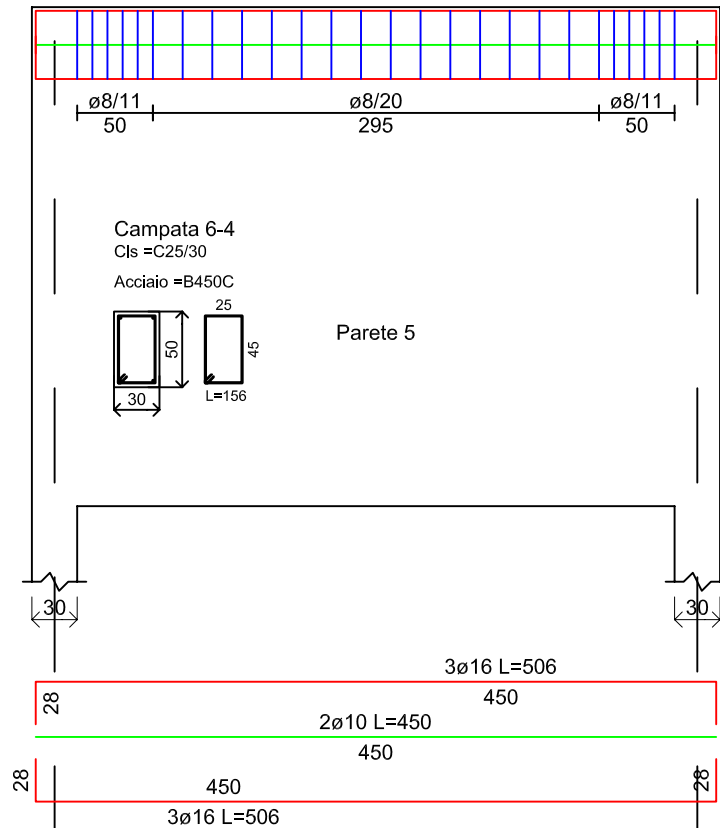


Travata 19 Piano 1

6
Q=330



4
Q=330

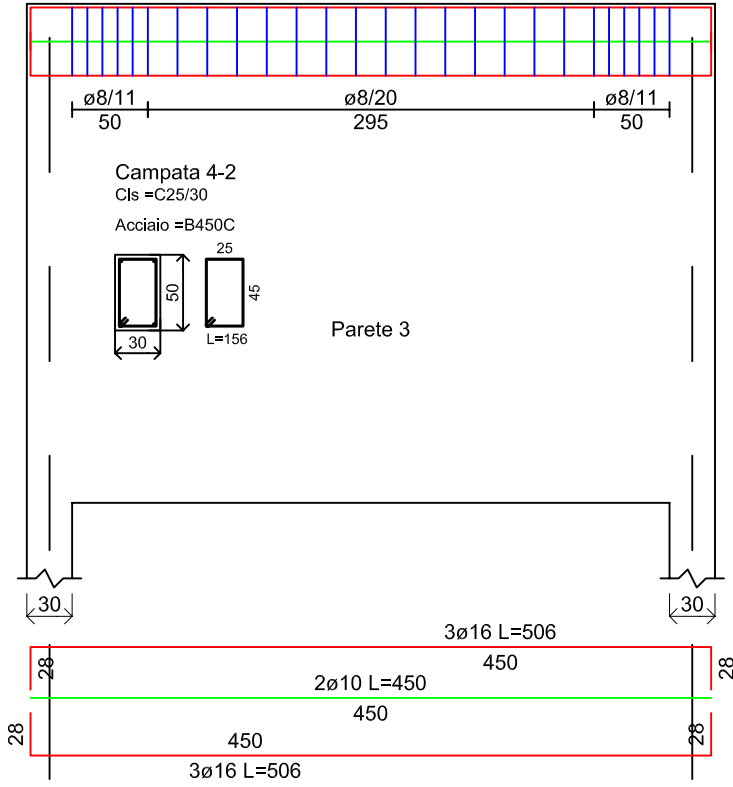


Travata 16 Piano 1



4
Q=330

2
Q=330

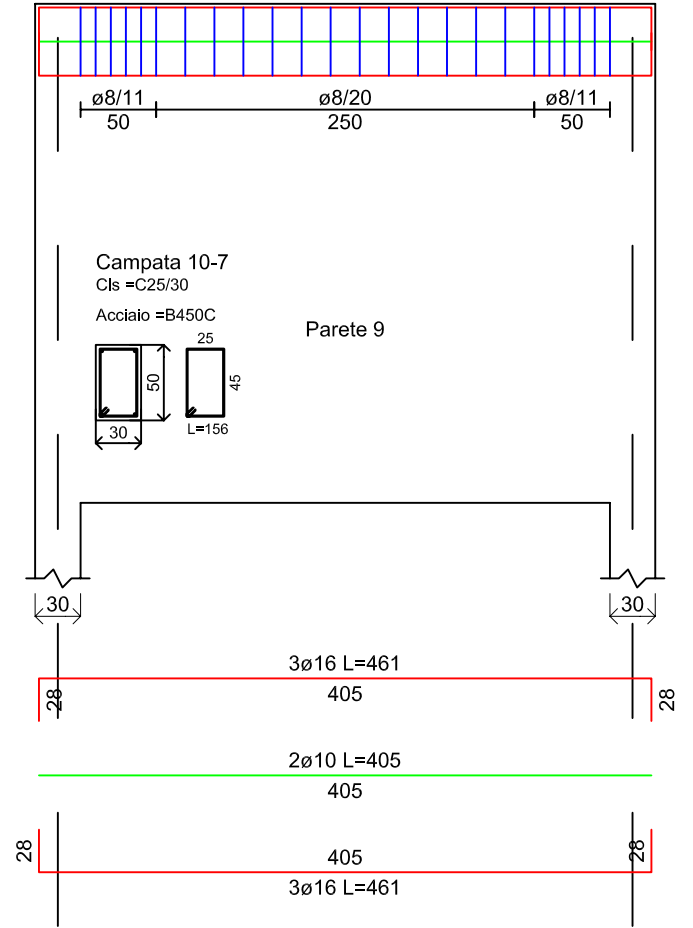


Travata 24 Piano 1



10
Q=330

7
Q=330

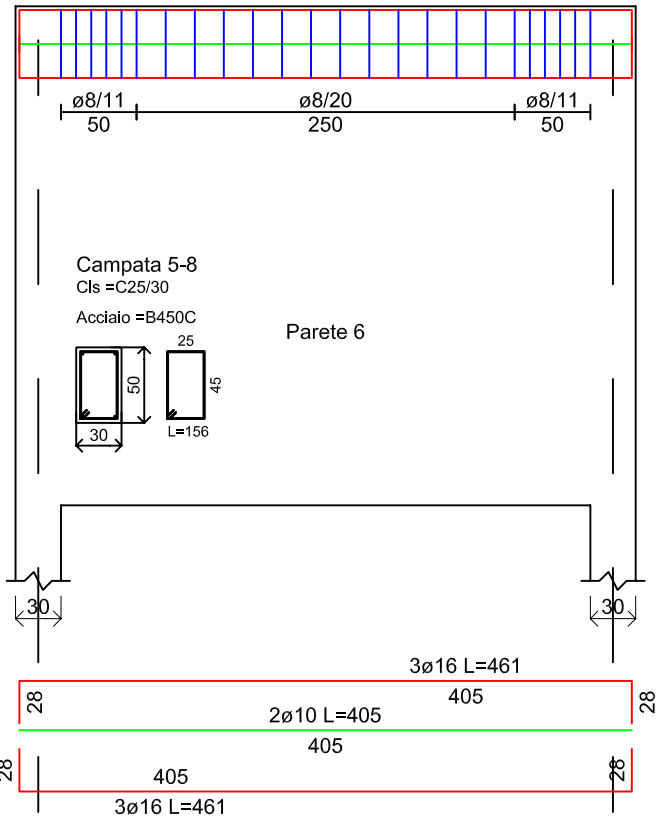


Travata 21 Piano 1



5
Q=330

8
Q=330

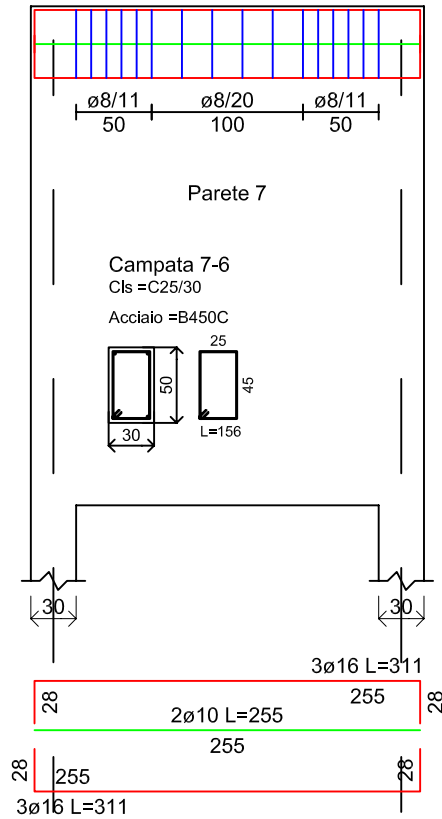


Travata 22 Piano 1



7
Q=330

6
Q=330

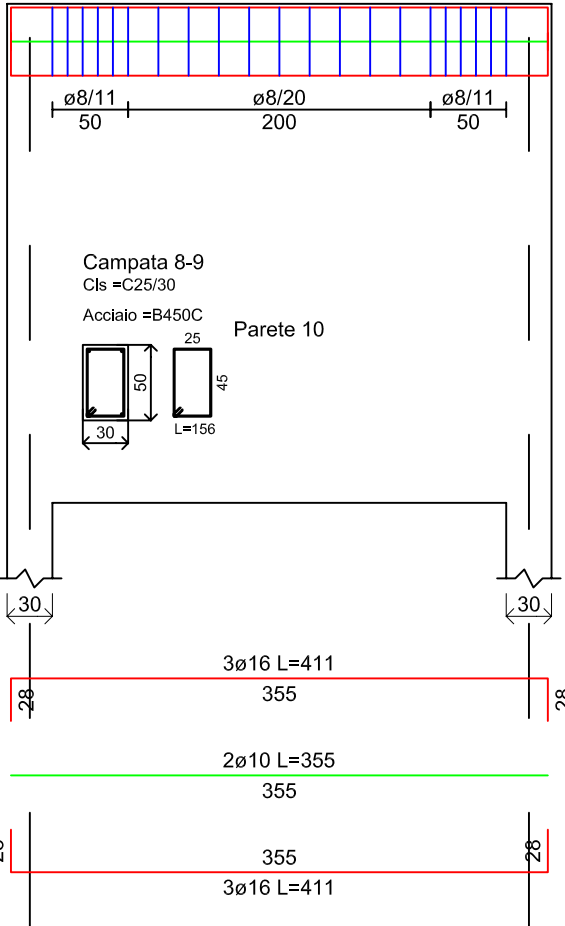


Travata 25 Piano 1

8
Q=330



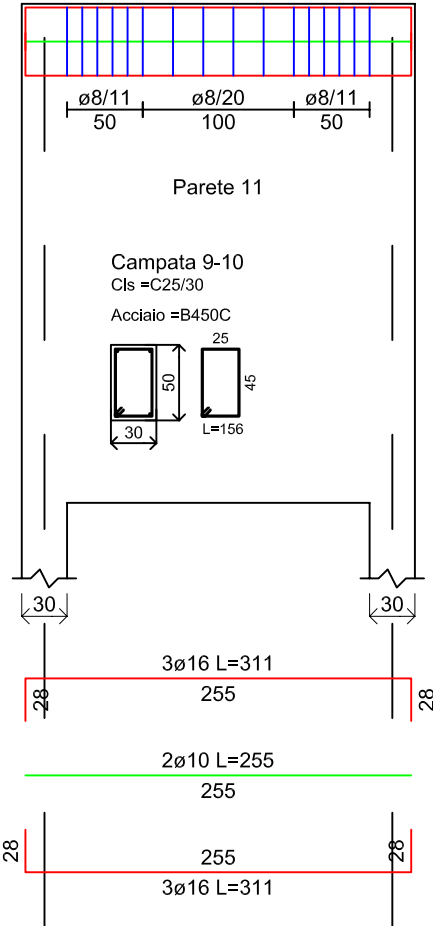
9
Q=330



Travata 26 Piano 1

9
Q=330

10
Q=330

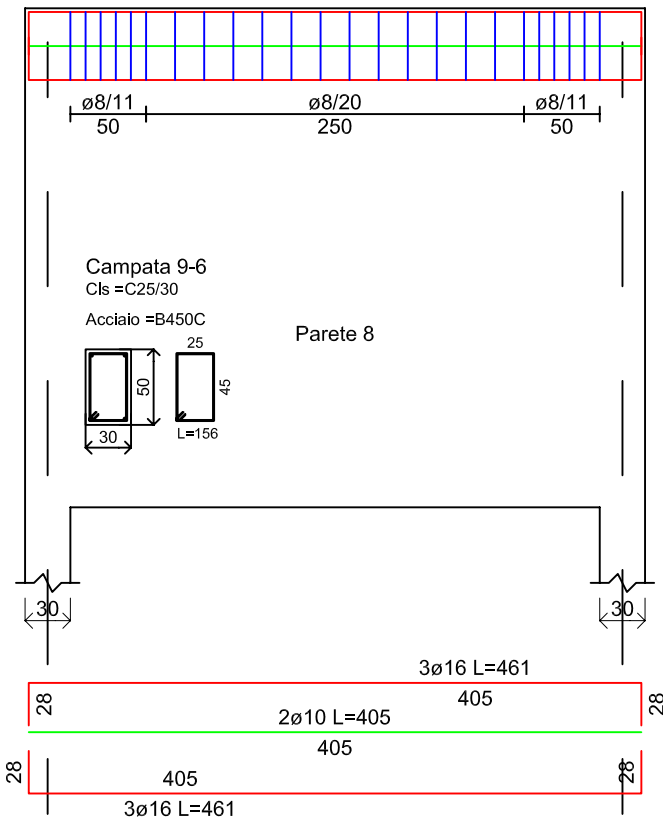


Travata 23 Piano 1

9
Q=330



6
Q=330

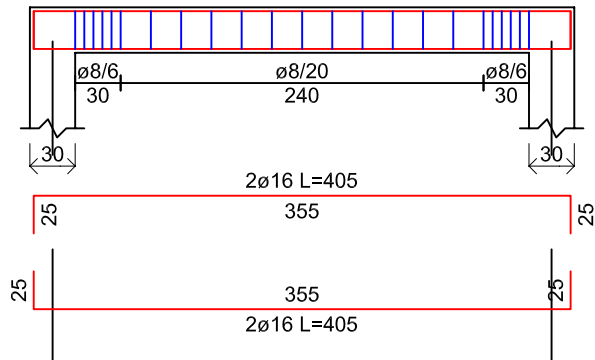


Travata 17 Piano 1

3
Q=330

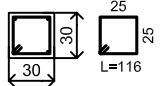


4
Q=330



Campata 3-4
Cls = C25/30

Acciaio = B450C

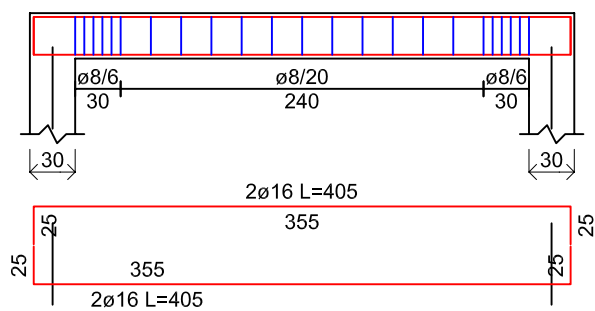


Travata 20 Piano 1

6
Q=330

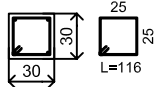


5
Q=330



Campata 6-5
Cls = C25/30

Acciaio = B450C



Comune di SANTO STEFANO DI CAMASTRA

Provincia di MESSINA

ESECUTIVI DI CANTIERE

Pareti

Oggetto: **Calcolo delle strutture in c.a. per la realizzazione di una vasca per acque potabili a servizio del portoturistico**

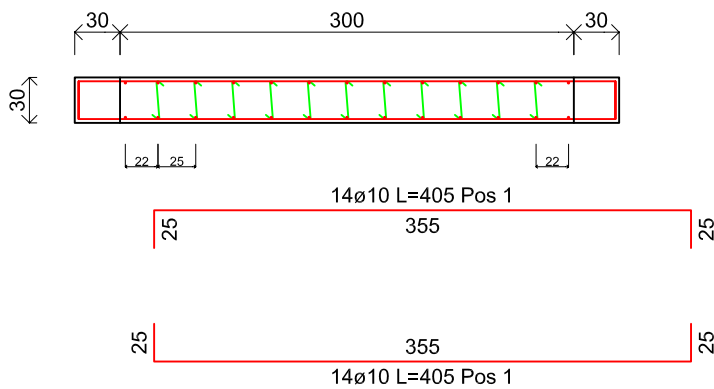
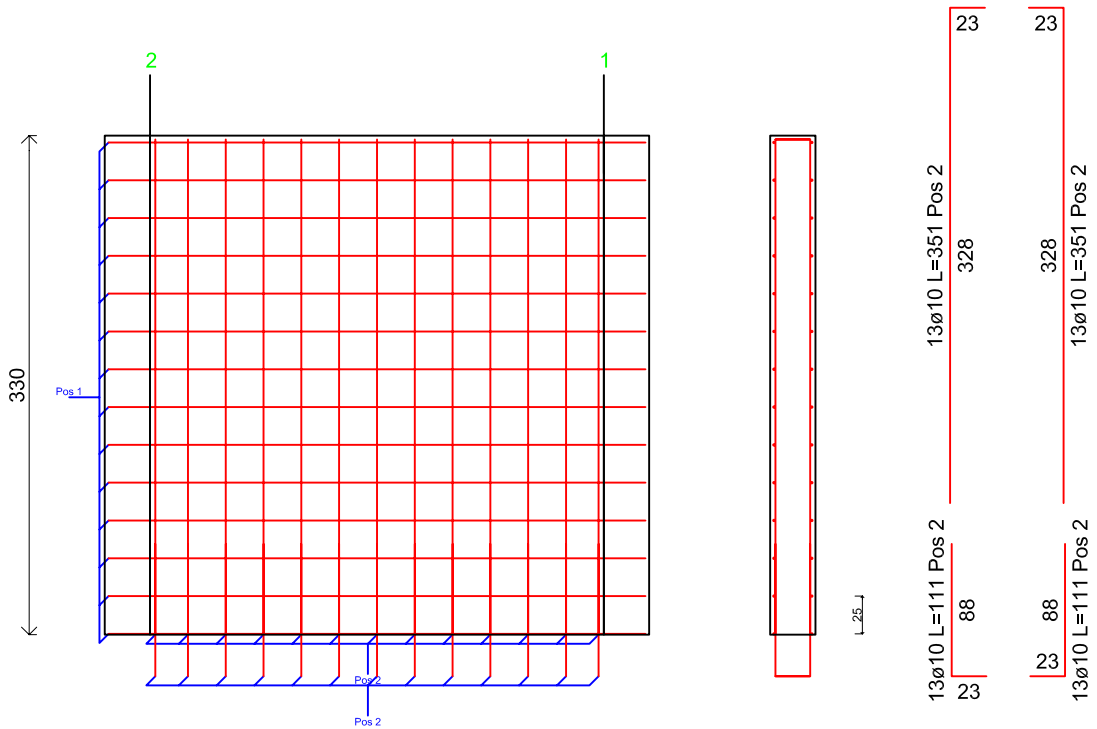
Ditta: COSTRUZIONI BRUNO TEODORO SPA

Data: 20/04/2017

Materiali

CLS
C25/30
ACCIAIO LONGITUDINALI
B450C
ACCIAIO STAFFE
B450C

Parete non Dissipativa1 Piano 1 Fili Fissi 2-1



Materiali

Cls	C25/30
Acciaio	B450C

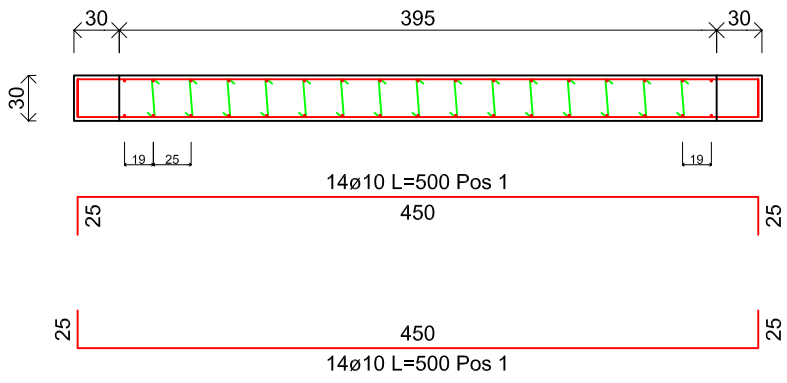
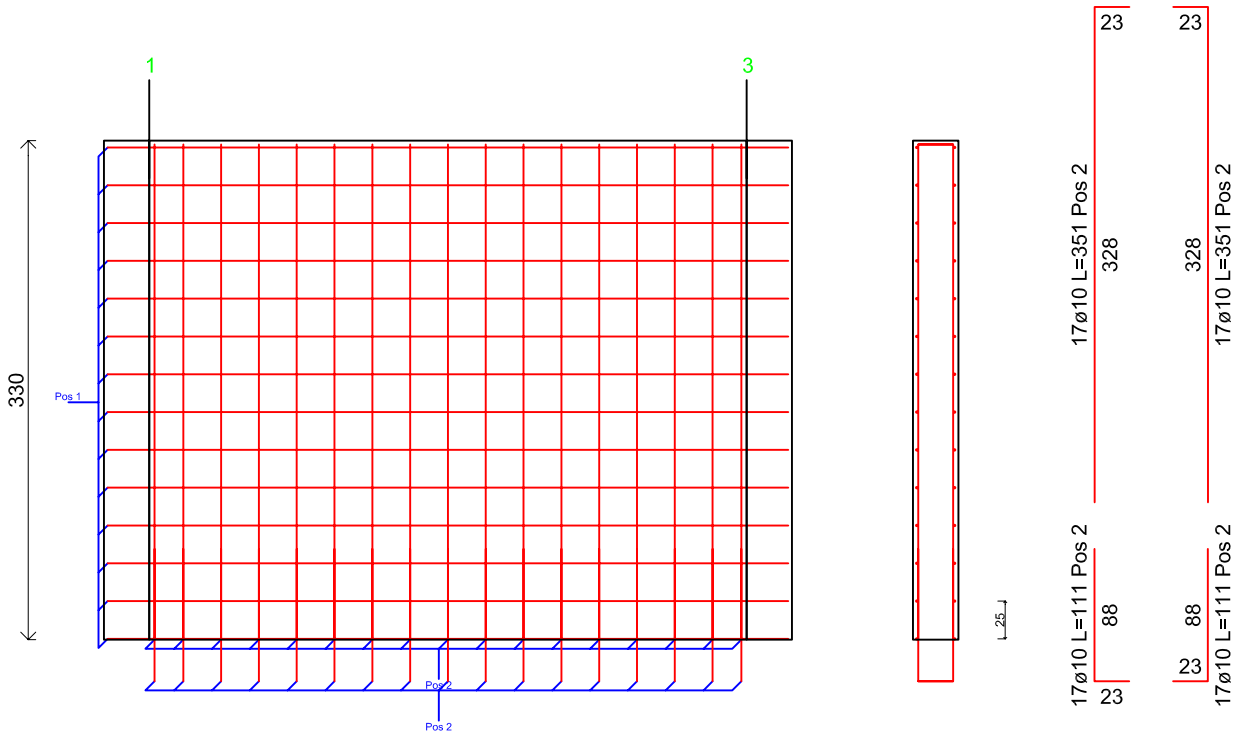
Armature

TIPO	ø	Passo	Pos
Oriz.	10	25	1
Vert.	10	25	2

LEGATURE

Zona	ø	Passo Oriz	Passo Vert
Non Conf	8	25	25

Parete non Dissipativa2 Piano 1 Fili Fissi 1-3



Materiale

Cls	C25/30
Acciaio	B450C

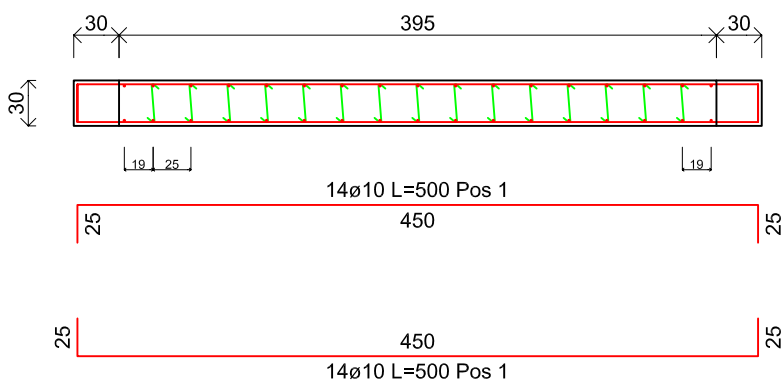
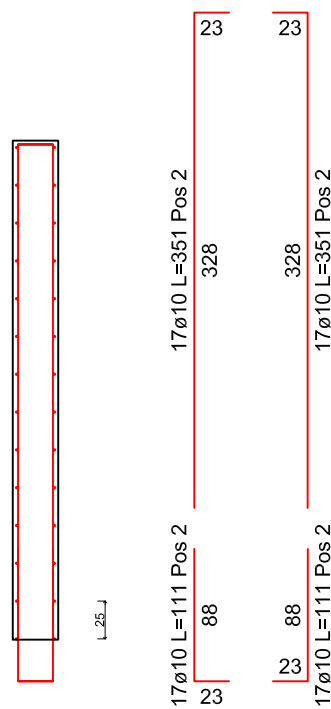
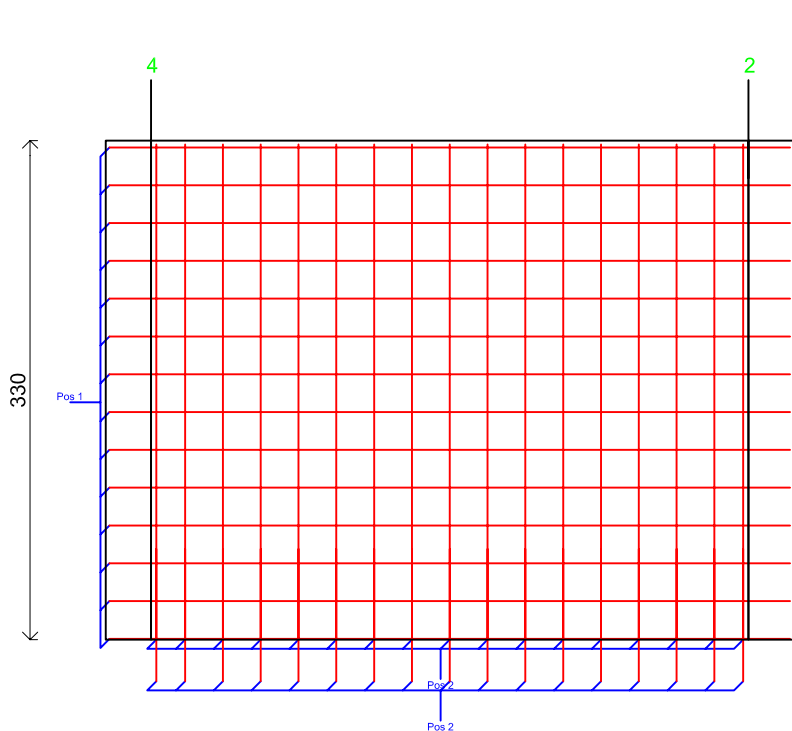
Armature

TIPO	ø	Passo	Pos
Oriz.	10	25	1
Vert.	10	25	2

LEGATURE

Zona	ø	Passo Oriz	Passo Vert
Non Conf	8	25	25

Parete non Dissipativa3 Piano 1 Fili Fissi 4-2



Materiali

Cls	C25/30
Acciaio	B450C

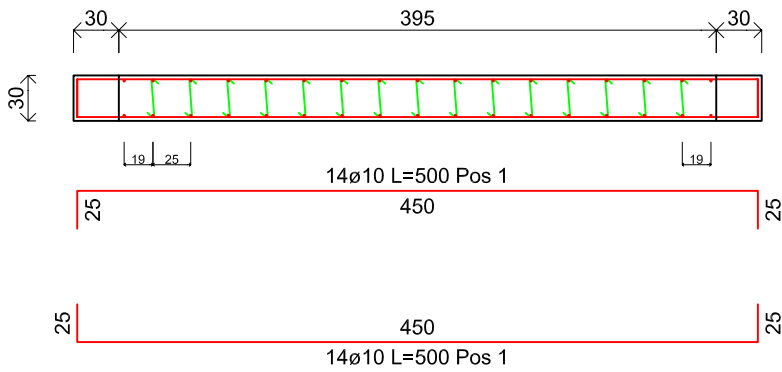
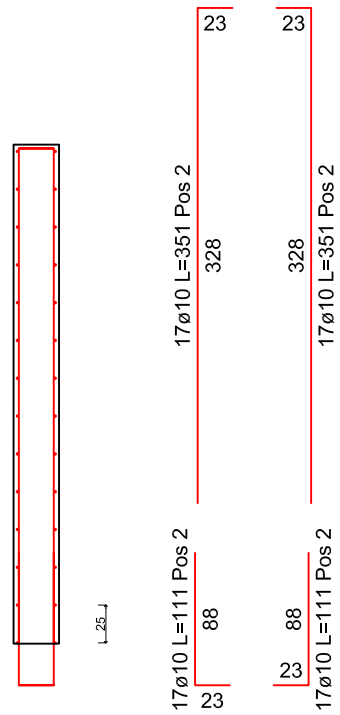
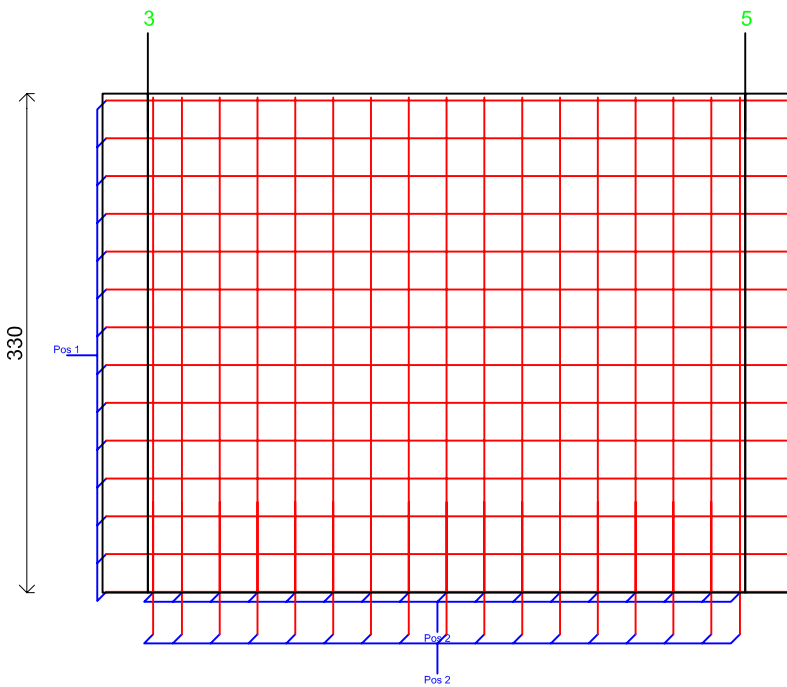
Armature

TIPO	ø	Passo	Pos
Oriz.	10	25	1
Vert.	10	25	2

LEGATURE

Zona	ø	Passo Oriz	Passo Vert
Non Conf	8	25	25

Parete non Dissipativa4 Piano 1 Fili Fissi 3-5



Materiali

Cls	C25/30
Acciaio	B450C

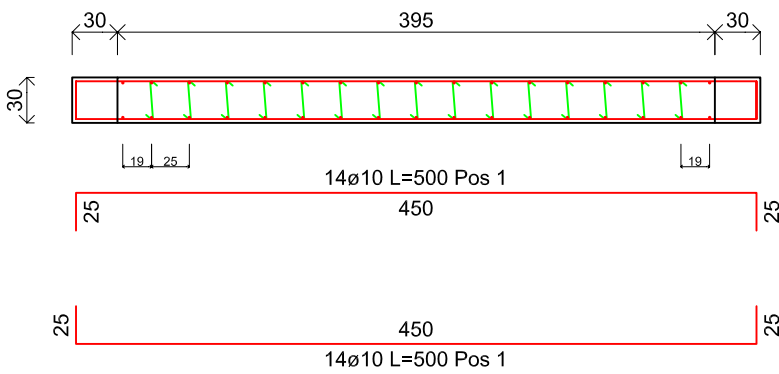
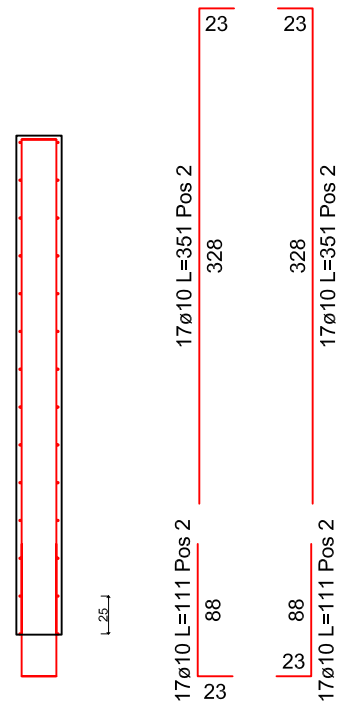
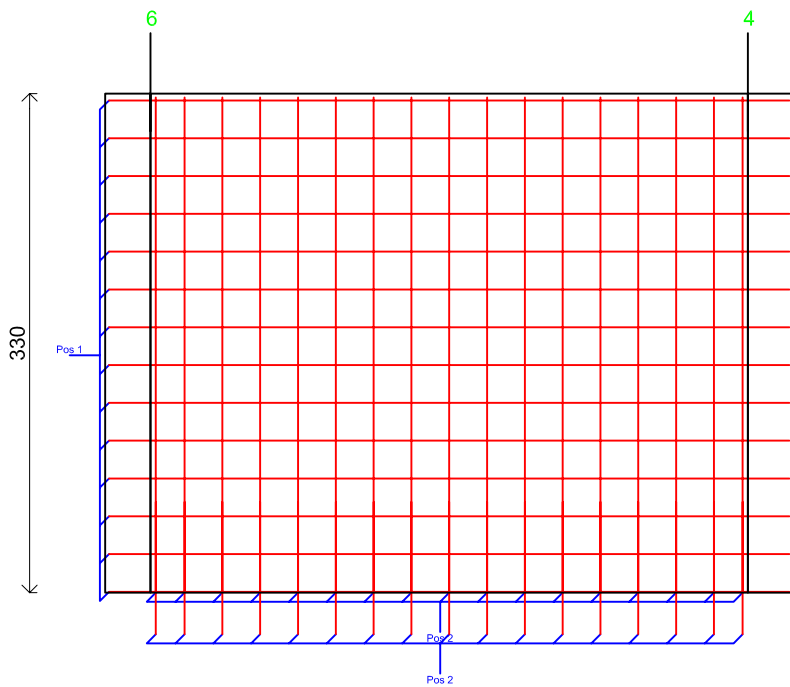
Armature

TIPO	ø	Passo	Pos
Oriz.	10	25	1
Vert.	10	25	2

LEGATURE

Zona	ø	Passo Oriz	Passo Vert
Non Conf	8	25	25

Parete non Dissipativa5 Piano 1 Fili Fissi 6-4



Materiali

Cls	C25/30
Acciaio	B450C

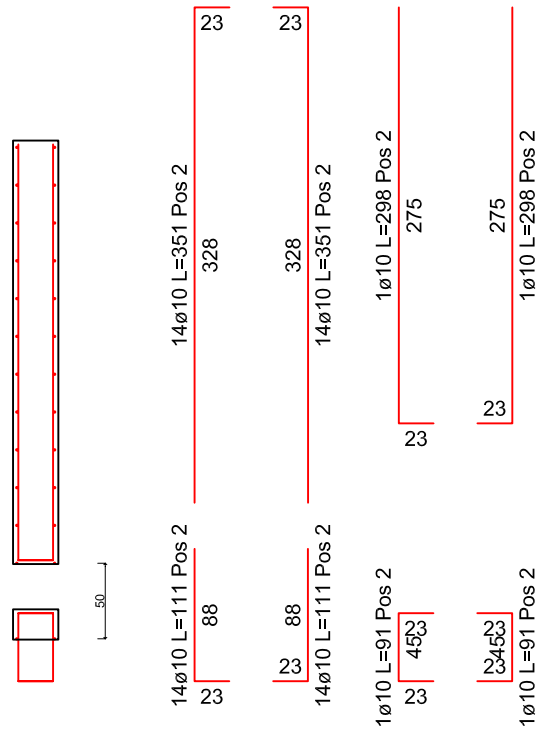
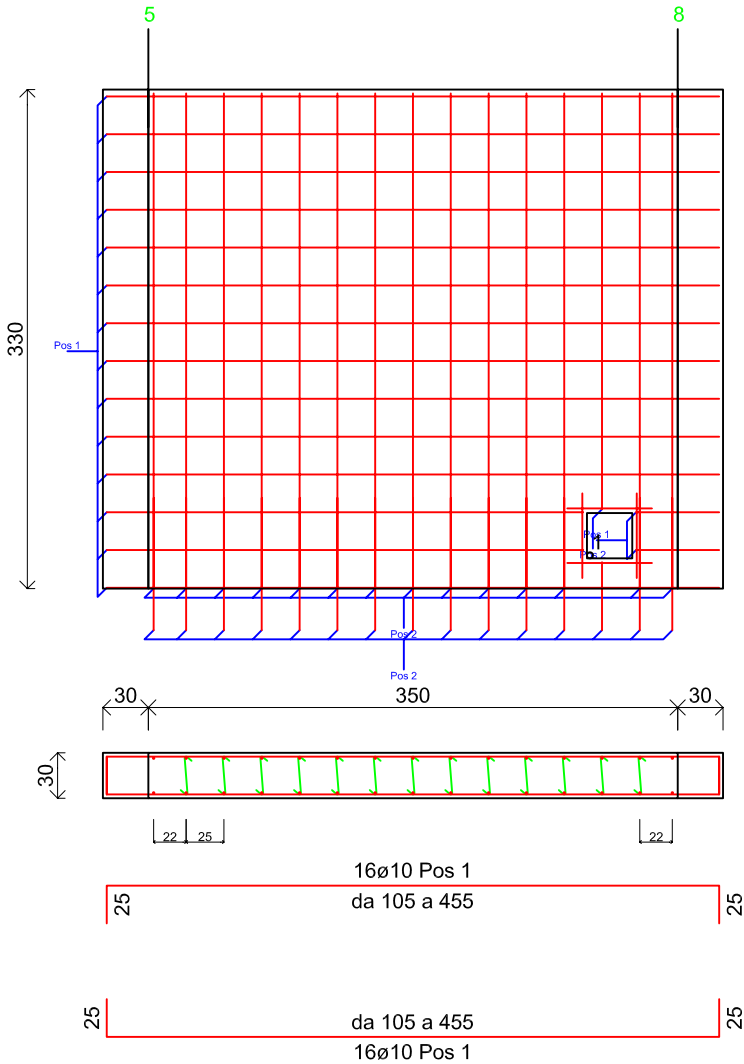
Armature

TIPO	∅	Passo	Pos.
Oriz.	10	25	1
Vert.	10	25	2

LEGATURE

Zona	∅	Passo Oriz	Passo Vert
Non Conf	8	25	25

Parete non Dissipativa6 Piano 1 Fili Fissi 5-8



Materiali

Cls	C25/30
Acciaio	B450C

Armature

TIPO	ϕ	Passo	Pos
Oriz.	10	25	1
Vert.	10	25	2

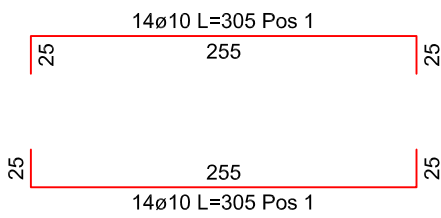
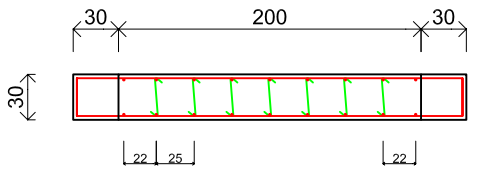
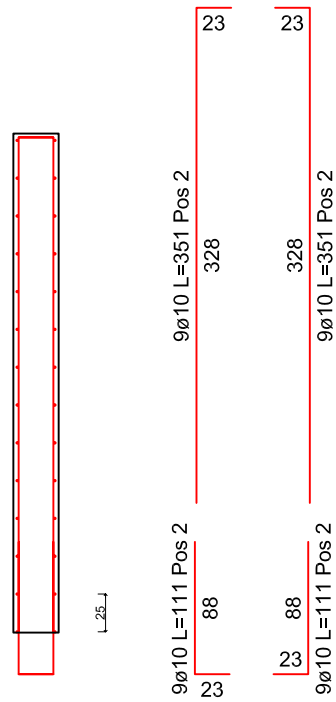
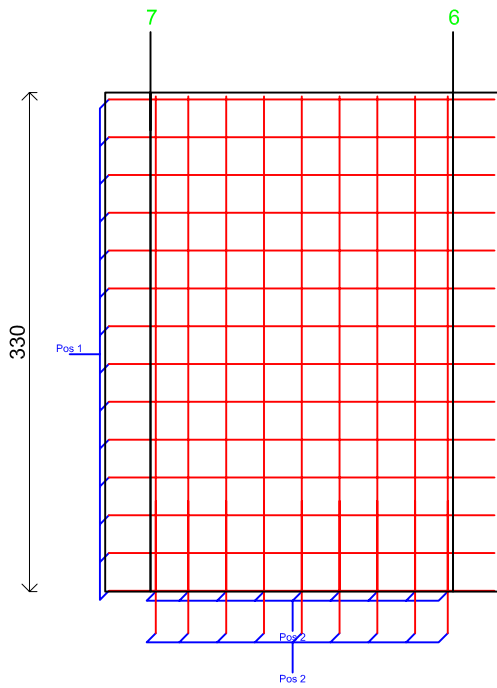
LEGATURE

Zona	ϕ	Passo Oriz	Passo Vert
Non Conf	8	25	25

Fori

NUM.	X	Y	Lx	Ly
1	290	20	30	30

Parete non Dissipativa7 Piano 1 Fili Fissi 7-6



Materiali

Cls	C25/30
Acciaio	B450C

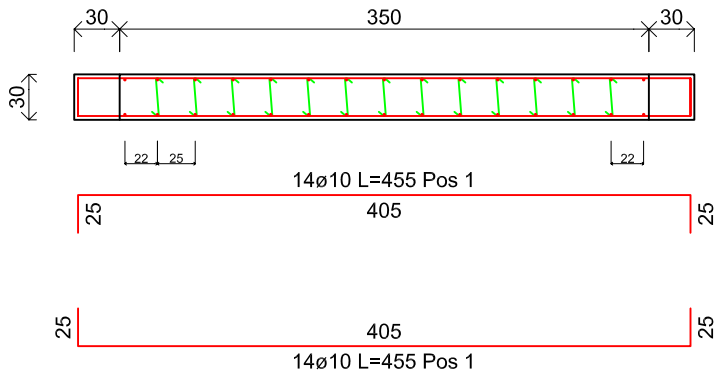
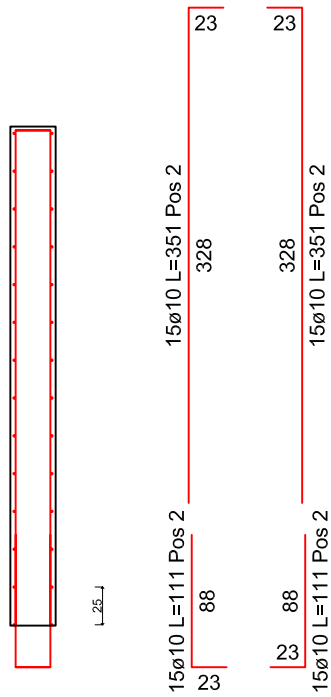
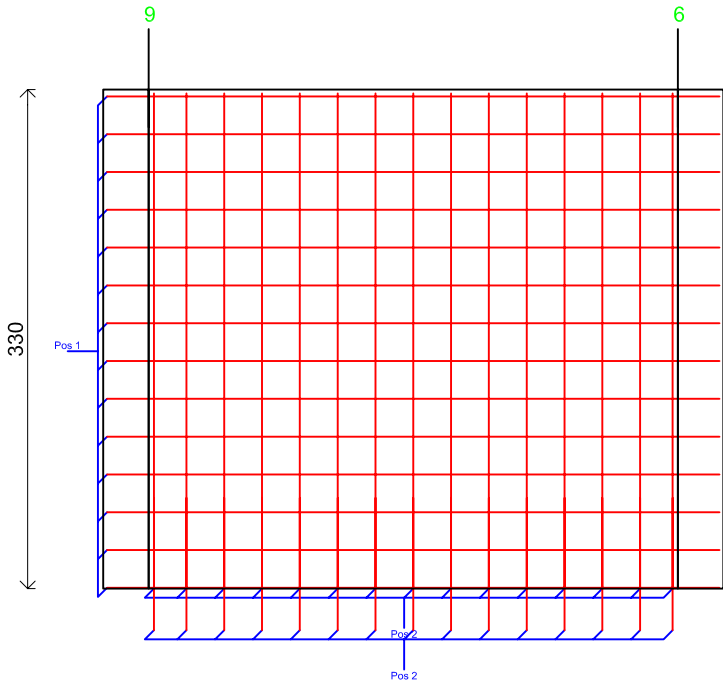
Armature

TIPO	ø	Passo	Pos
Oriz.	10	25	1
Vert.	10	25	2

LEGATURE

Zona	ø	Passo Oriz	Passo Vert
Non Conf	8	25	25

Parete non Dissipativa8 Piano 1 Fili Fissi 9-6



Materiali

Cls	C25/30
Acciaio	B450C

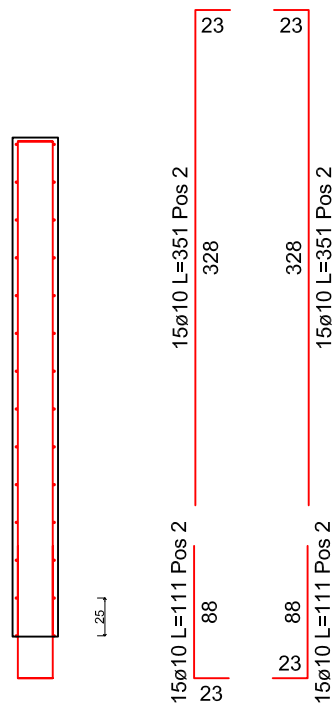
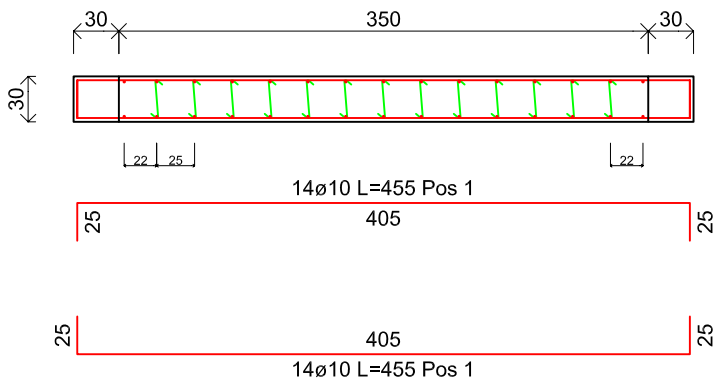
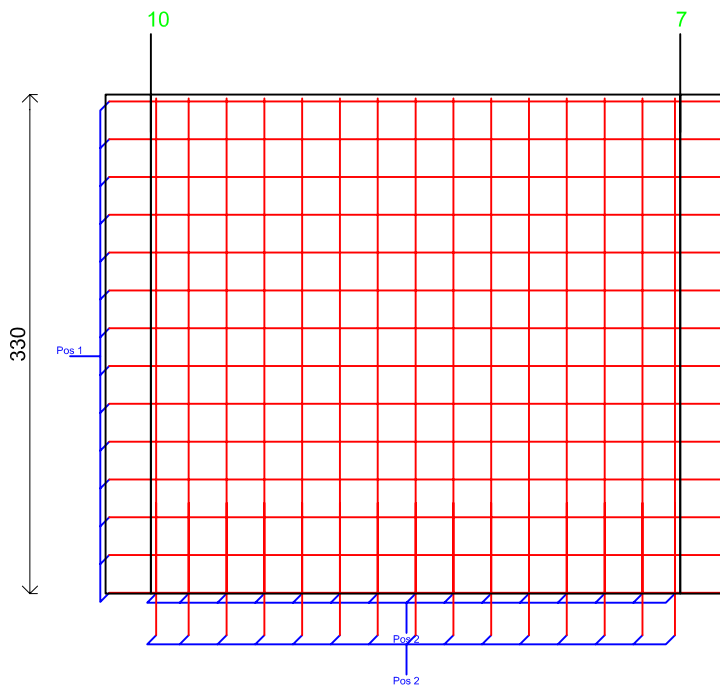
Armature

TIPO	ø	Passo	Pos
Oriz.	10	25	1
Vert.	10	25	2

LEGATURE

Zona	ø	Passo Oriz	Passo Vert
Non Conf	8	25	25

Parete non Dissipativa9 Piano 1 Fili Fissi 10-7



Materiali

Cls	C25/30
Acciaio	B450C

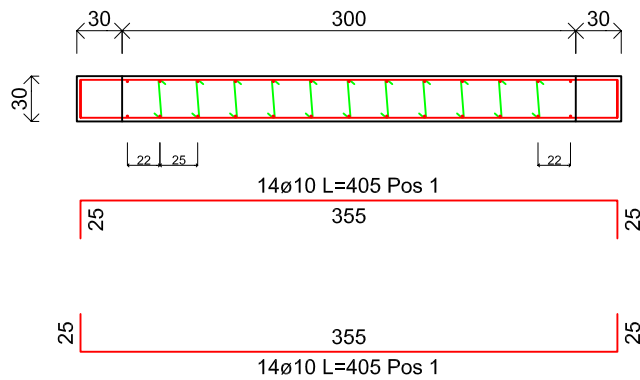
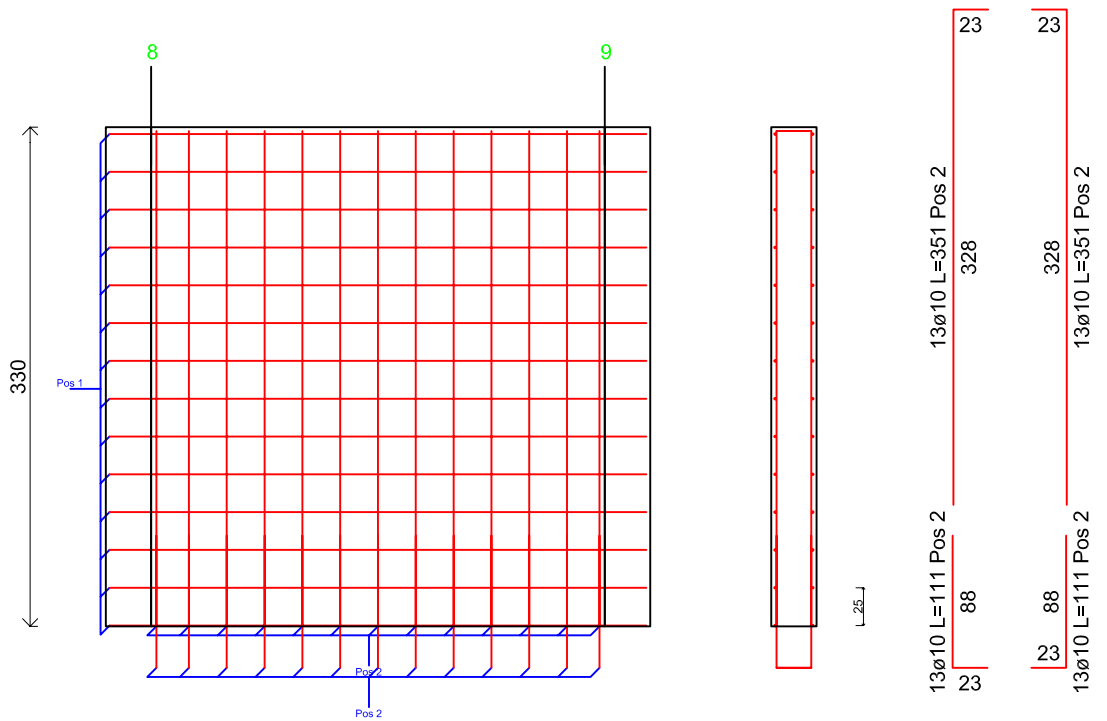
Armature

TIPO	ø	Passo	Pos
Oriz.	10	25	1
Vert.	10	25	2

LEGATURE

Zona	ø	Passo Oriz	Passo Vert
Non Conf	8	25	25

Parete non Dissipativa10 Piano 1 Fili Fissi 8-9

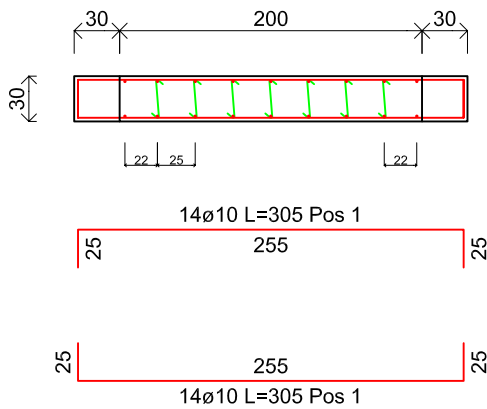
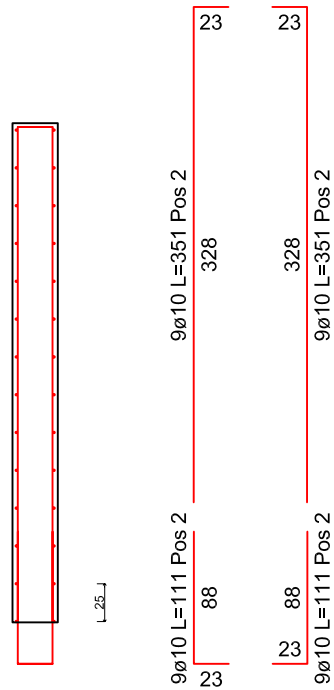
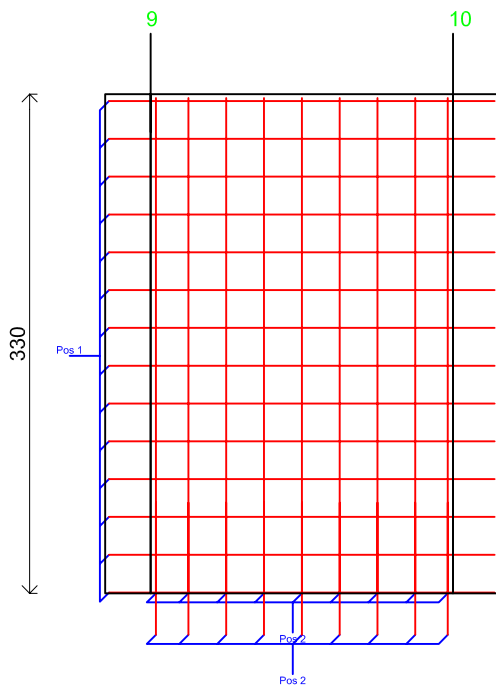


Materiali	
Cls	C25/30
Acclato	B450C

Armature			
TIPO	ø	Passo	Pos
Oriz.	10	25	1
Vert.	10	25	2

LEGATURE			
Zona	ø	Passo Oriz	Passo Vert
Non Conf	8	25	25

Parete non Dissipativa11 Piano 1 Fili Fissi 9-10



Materiali	
Cls	C25/30
Acciaio	B450C

Armature			
TIPO	ø	Passo	Pos.
Oriz.	10	25	1
Vert.	10	25	2

LEGATURE			
Zona	ø	Passo Oriz.	Passo Vert.
Non Conf	8	25	25

Comune di SANTO STEFANO DI CAMASTRA

Provincia di MESSINA

ESECUTIVI DI CANTIERE

Pilastrate

Oggetto: **Calcolo delle strutture in c.a. per la realizzazione di una vasca peracque potabili a servizio del portoturistico**

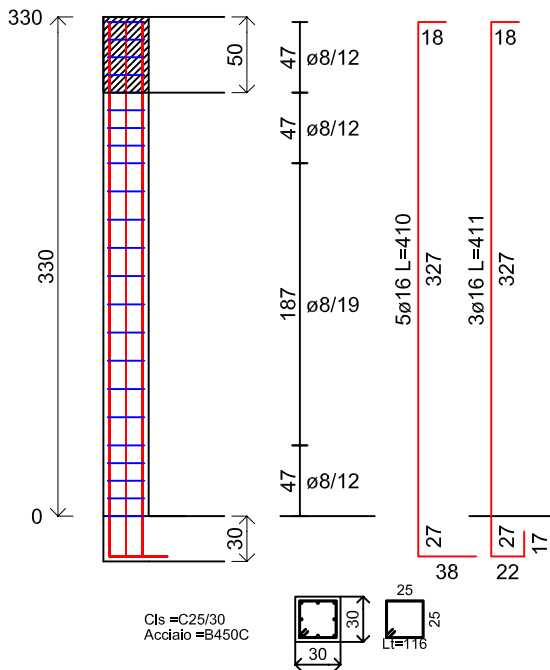
Ditta: COSTRUZIONI BRUNO TEODORO SPA

Data: 20/04/2017

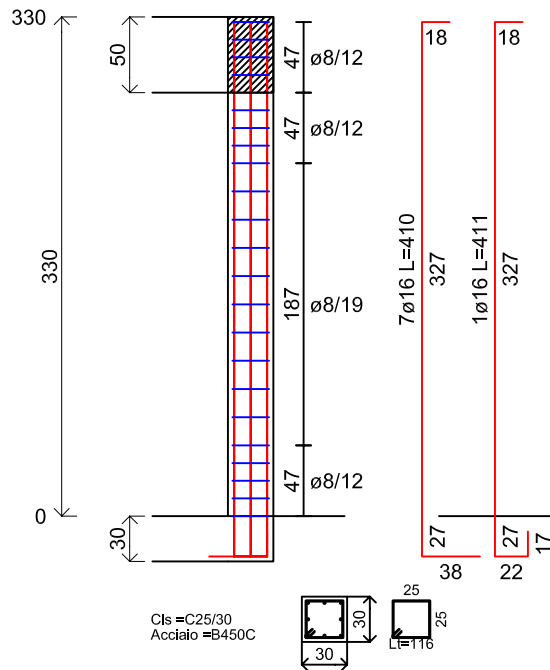
Materiali

CLS
C25/30
ACCIAIO LONGITUDINALI
B450C
ACCIAIO STAFFE
B450C

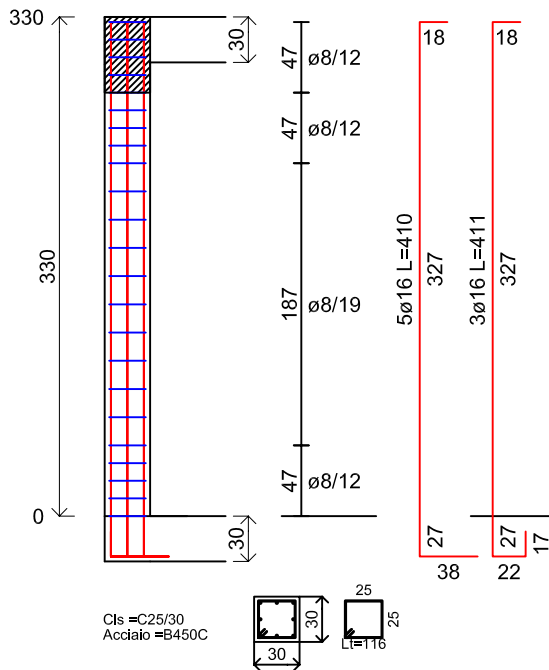
Pilastrata 1



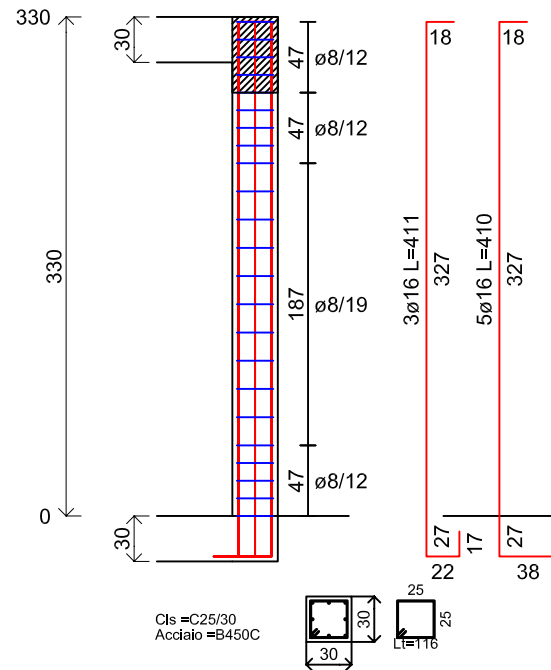
Pilastrata 2



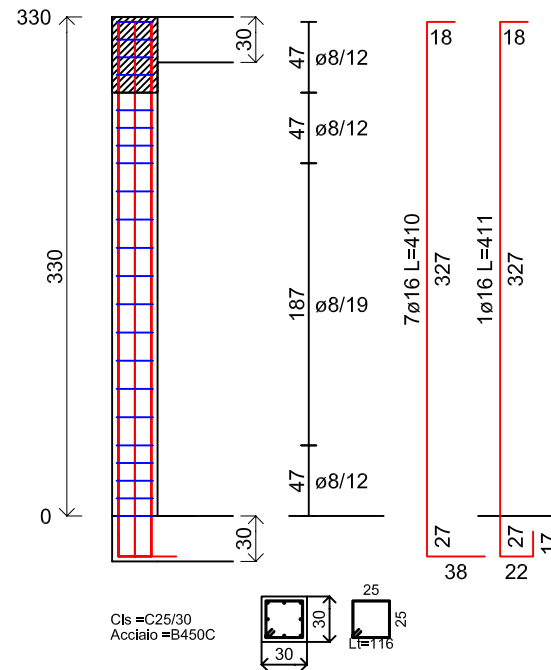
Pilastrata 3



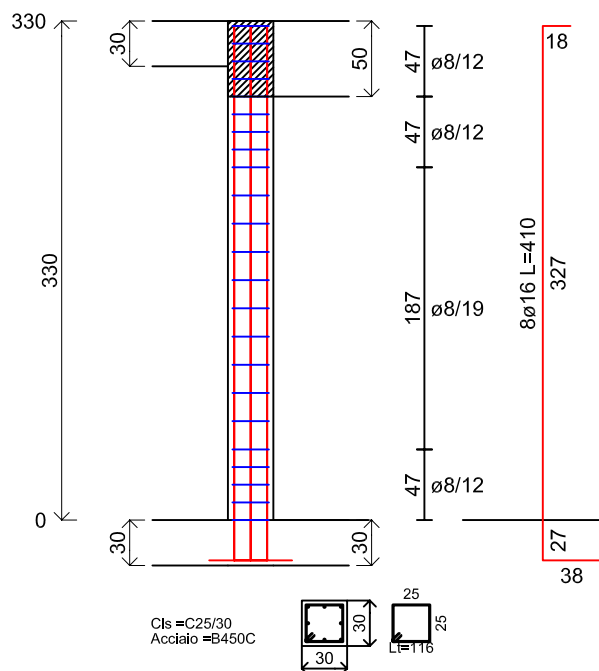
Pilastrata 4



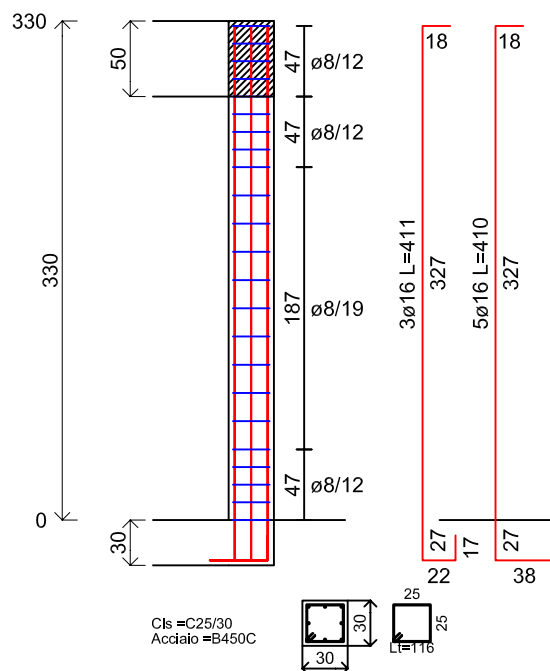
Pilastrata 5



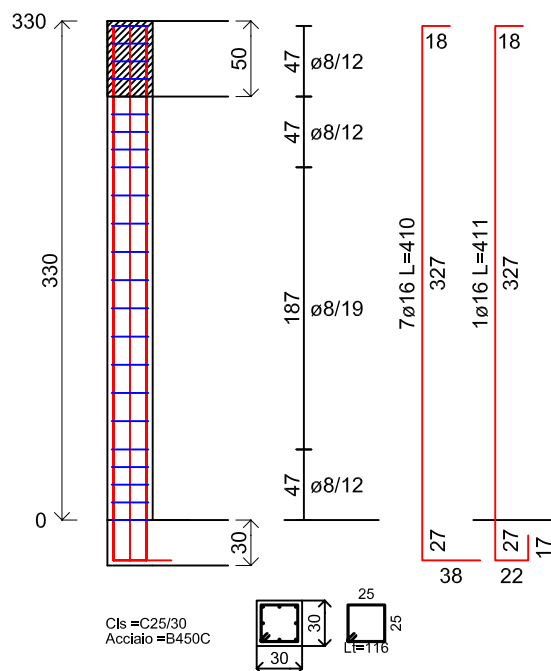
Pilastrata 6



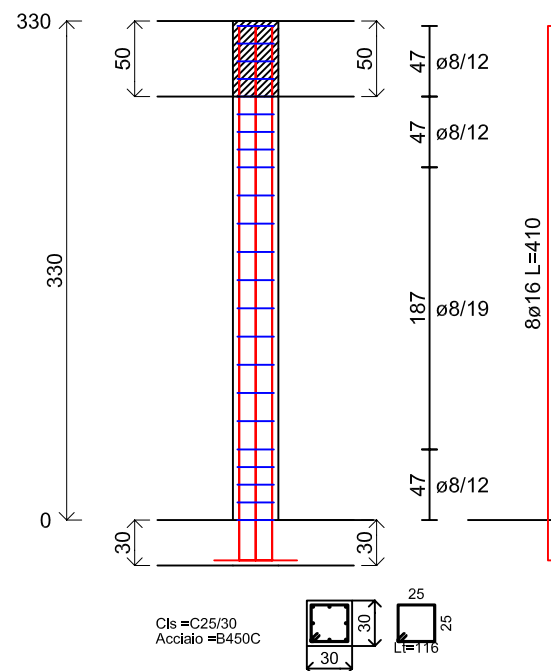
Pilastrata 7



Pilastrata 8



Pilastrata 9



Pilastrata 10

