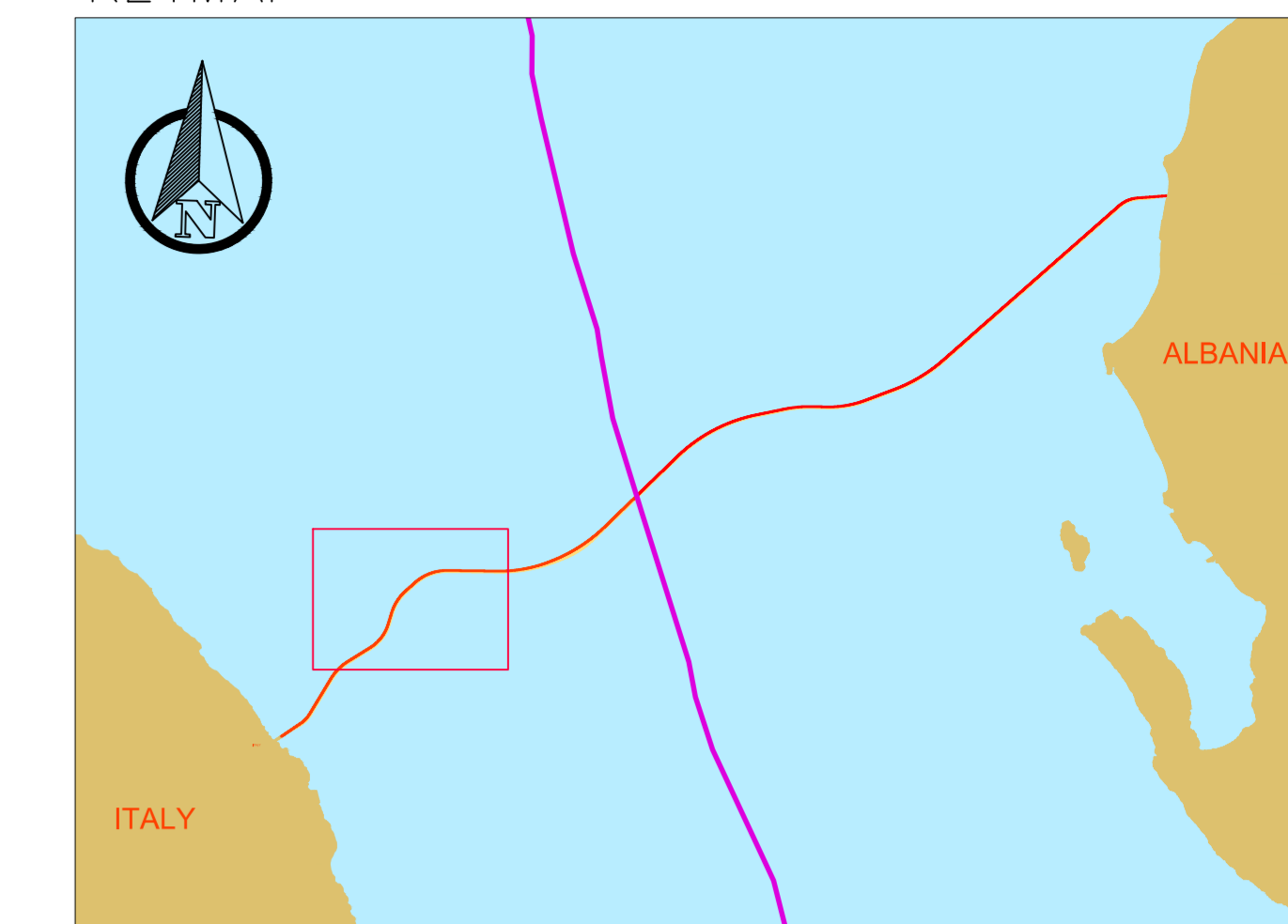
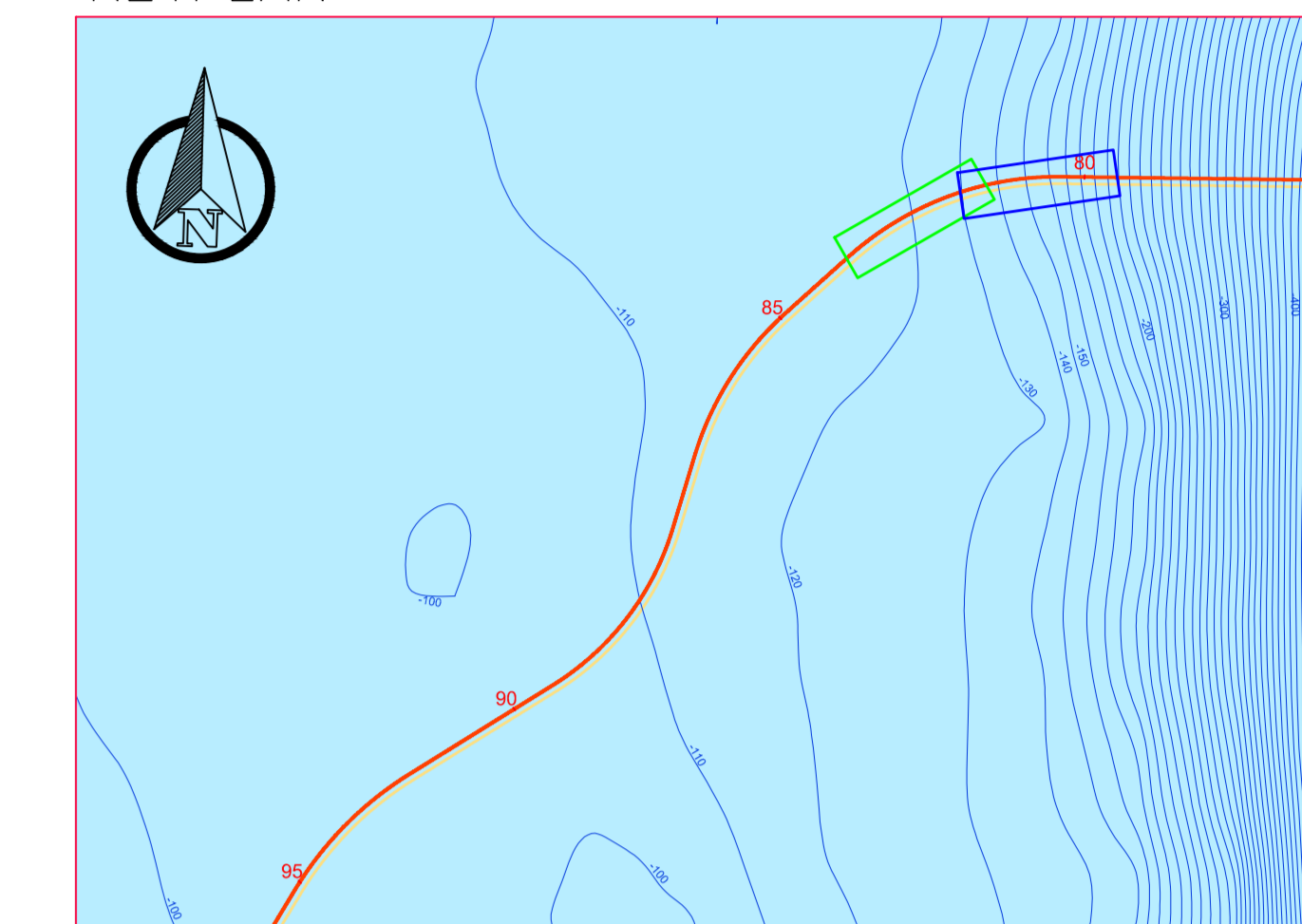


KEYMAP



KEYPLAN

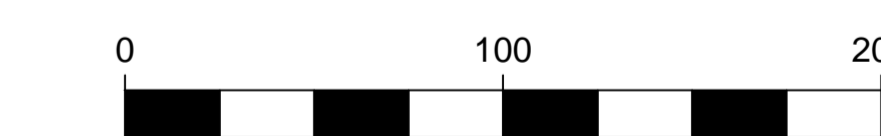


LEGENDA

- PIPELINE (LINEA CENTRALE)
- BUFFER PIPELINE 5 m + 5 m FOOTPRINT
- CAVO FIBRA OTTICA (FOC)
- BUFFER FOC 5 m + 5 m
- BATIMETRIA 1 m
- TARGET UNIDENTIFIED (TAUN) (ST12590)
- STAZIONE HAB5 (SURVEY 2013)

NOTE

Coordinate System Reference:
 WGS84 (ETRF 1989) Datum, WGS84 Spheroid
 Grid coordinates are in metres on the Universal Transverse Mercator
 Projection, Zone 34 N, Central Meridian 21°E.



SUPPLIER DOCUMENT NUMBER 16-1352-M6-H11	REVISION NO. 0	
--	-------------------	--

NO.	DESCRIPTION	DATE	BY	CHKD	APPR

D. EMESSO PER INFORMAZIONE		NO.	DATE	BY	CHKD	APPR
PROJECT TITLE TAP Trans Adriatic Pipeline Project		TAG NUMBERS				
DRAWING TITLE ITALIAN SECTION INTEGRATED MAPS		PAGE				
		6 of 12				

FORMAT A0+	SCALE 1:2000	FACILITY CODE -	SYSTEM NO. -	RD CODE -	REVISION NO. 0
---------------	-----------------	--------------------	-----------------	--------------	-------------------

DRAWING NO. OPL00-C493-150-Y-TRX-0009