

LEGENDA

- BATIMETRIE (1 m)
- FOC
- PIPELINE
- BUFFER 10 m
- BUFFER 50 m
- ROV_2016
- AREE OSG

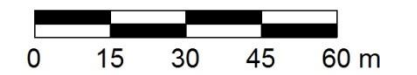
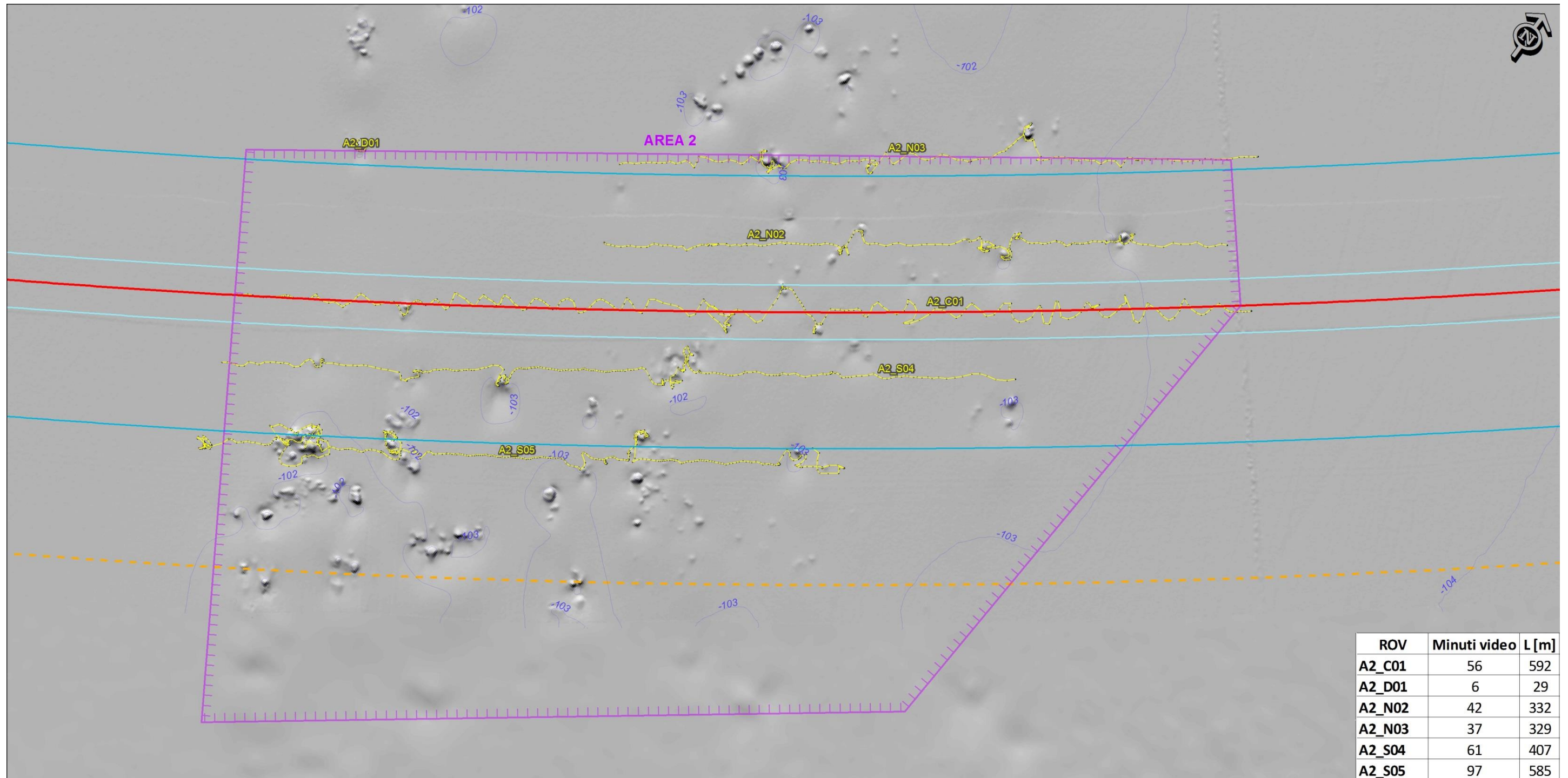


Figura 1: Inquadramento Area 1

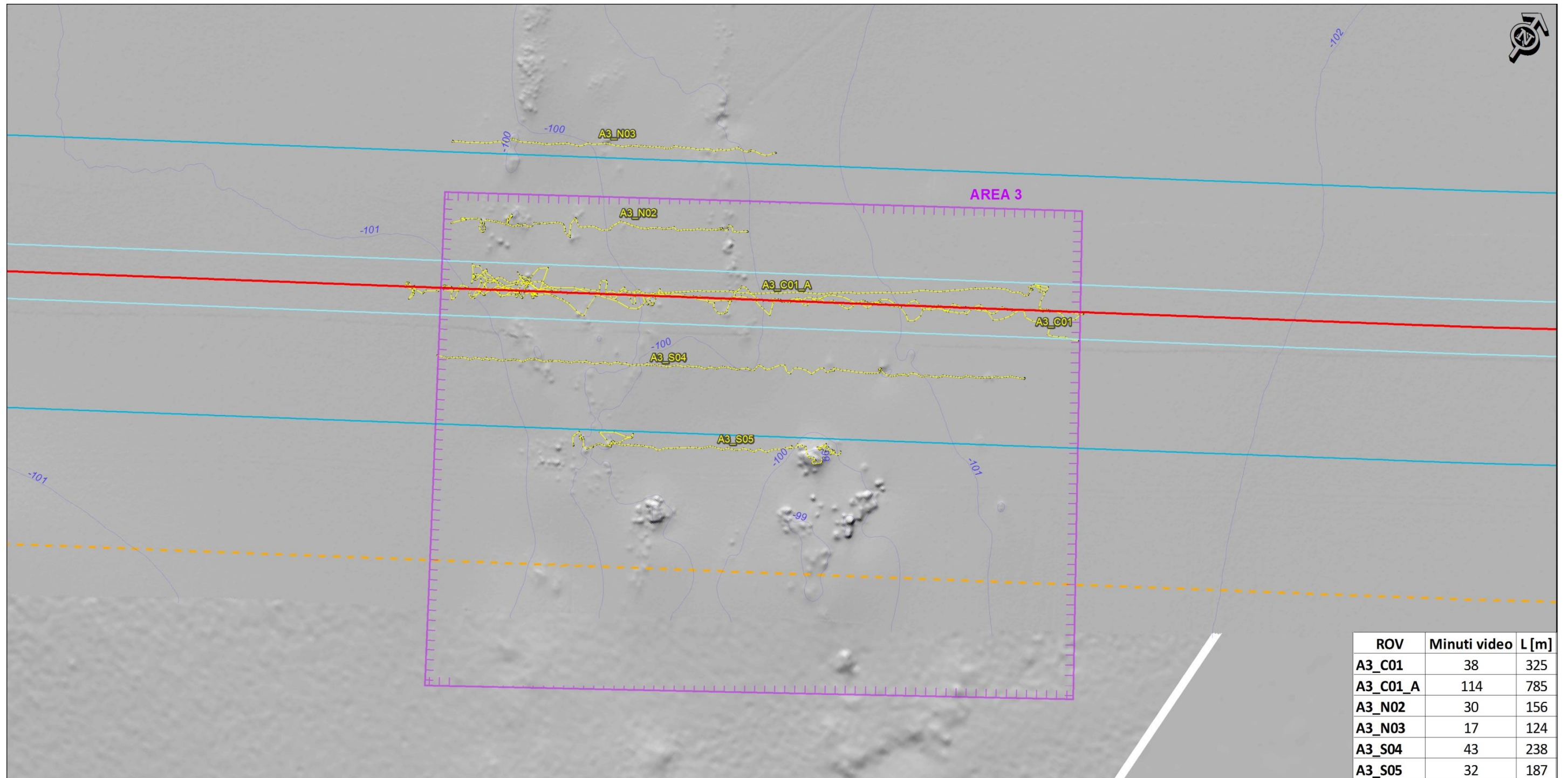


LEGENDA

- BATIMETRIE (1 m)
- FOC
- PIPELINE
- BUFFER 10 m
- BUFFER 50 m
- AREE OSG
- ROV_2016



Figura 2: Inquadramento Area 2



ROV	Minuti video	L [m]
A3_C01	38	325
A3_C01_A	114	785
A3_N02	30	156
A3_N03	17	124
A3_S04	43	238
A3_S05	32	187

LEGENDA

- BATIMETRIE (1 m)
- FOC
- PIPELINE
- BUFFER 10 m
- BUFFER 50 m
- ROV_2016
- AREE OSG

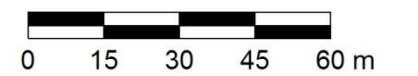


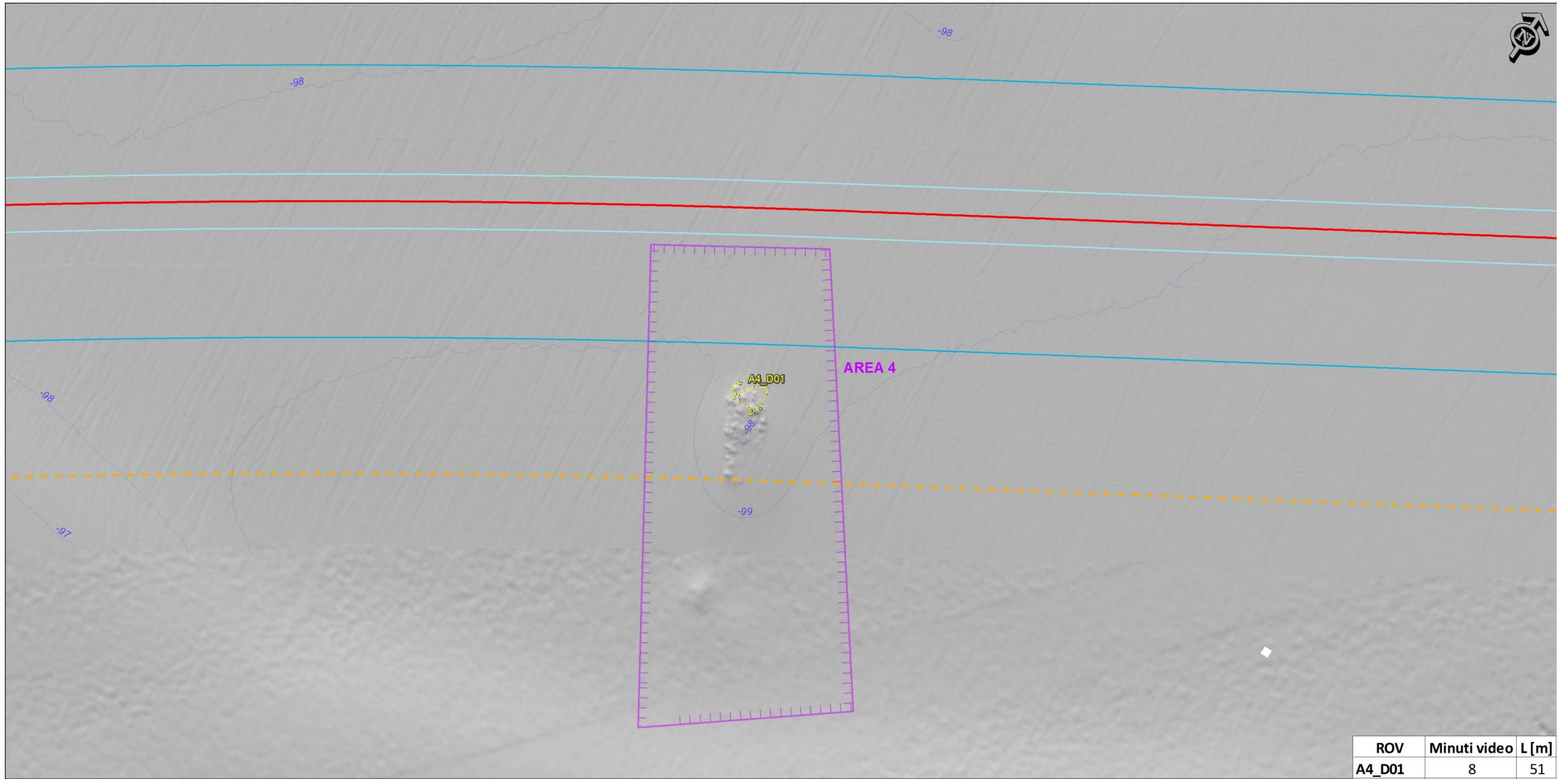


Figura 3: Inquadramento Area 3

	TAP AG Doc. no.:	OPL00-C493-150-Y-TRX-0010	Rev. No.:	0
		Doc. Title:	Documentazione Tecnica per l'Ottemperanza alla Prescrizione A7 del D.M. 223 del 11/09/2014	Page: 4 of 5



ROV	Minuti video	L [m]
A4_D01	8	51

LEGENDA

- BATIMETRIE (1 m)
- FOC
- PIPELINE
- BUFFER 10 m
- BUFFER 50 m
- AREE OSG
- ROV_2016

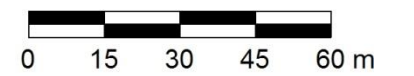
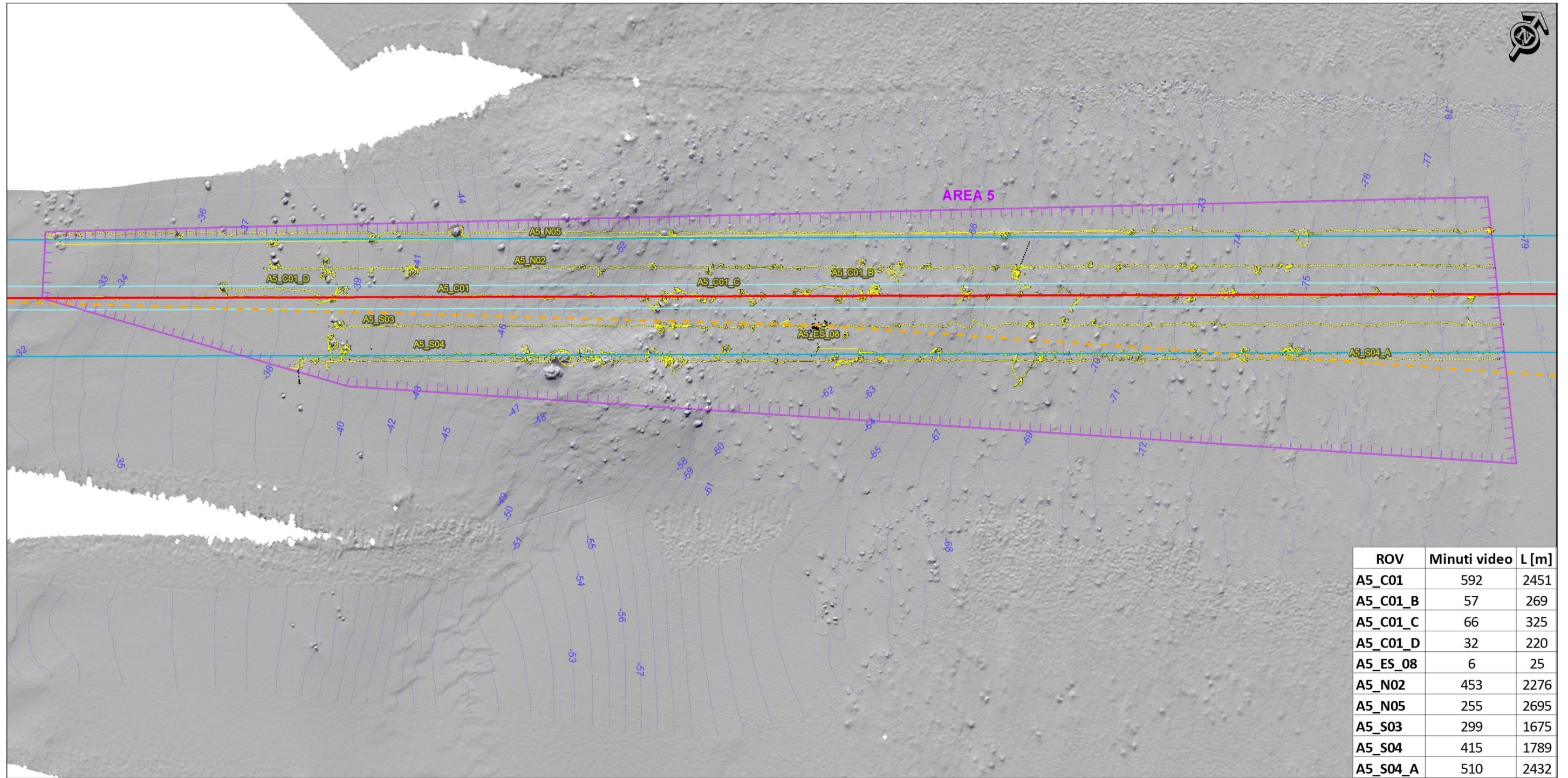


Figura 4: Inquadramento Area 4



ROV	Minuti video	L [m]
A5_C01	592	2451
A5_C01_B	57	269
A5_C01_C	66	325
A5_C01_D	32	220
A5_ES_08	6	25
A5_N02	453	2276
A5_N05	255	2695
A5_S03	299	1675
A5_S04	415	1789
A5_S04_A	510	2432

LEGENDA

- BATIMETRIE (1 m)
- FOC
- PIPELINE
- BUFFER 10 m
- BUFFER 50 m
- ROV_2016
- AREE OSG



Figura 5: Inquadramento Area 5