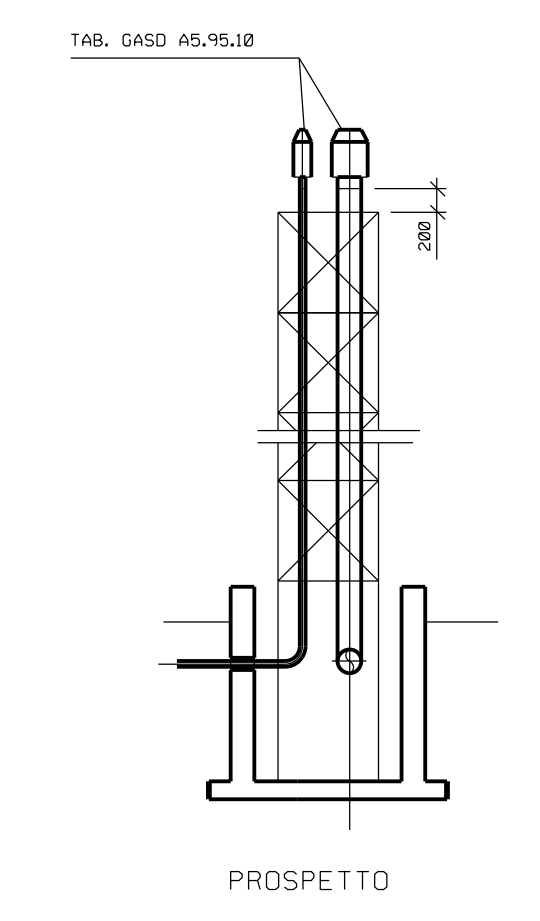
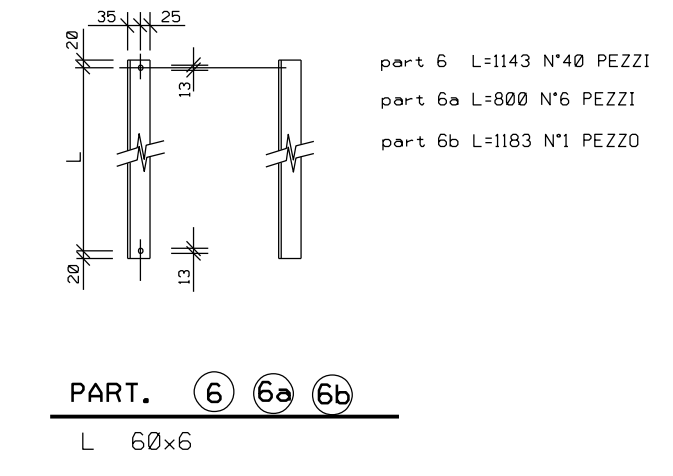
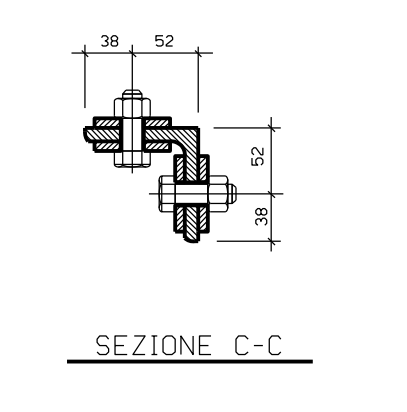
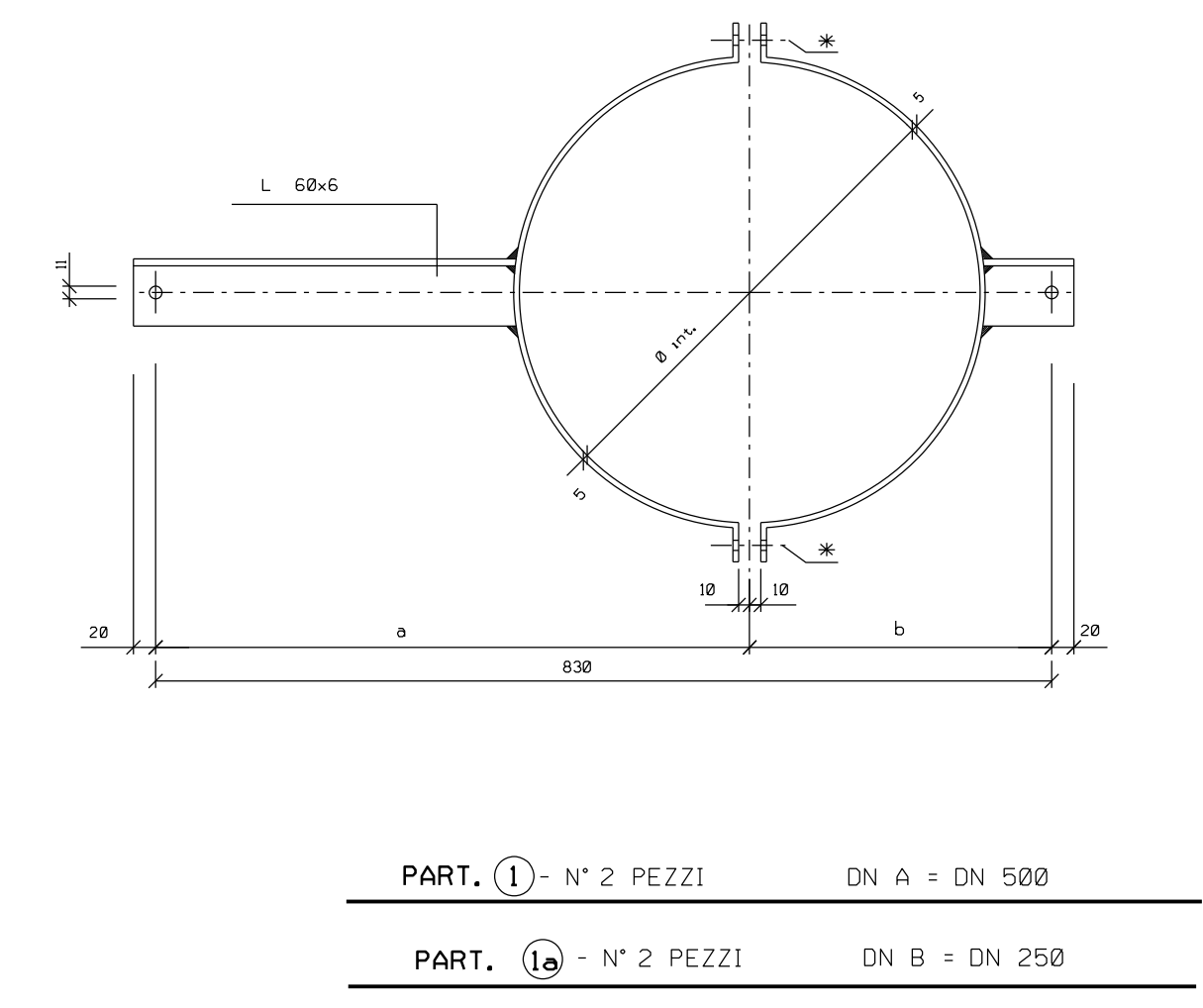
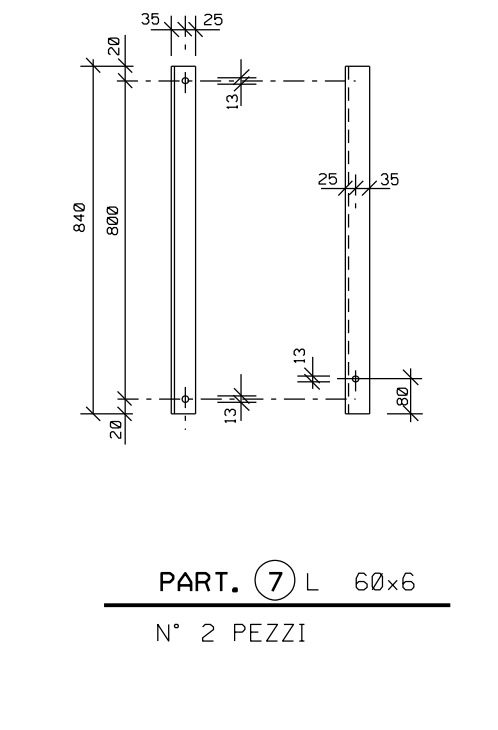
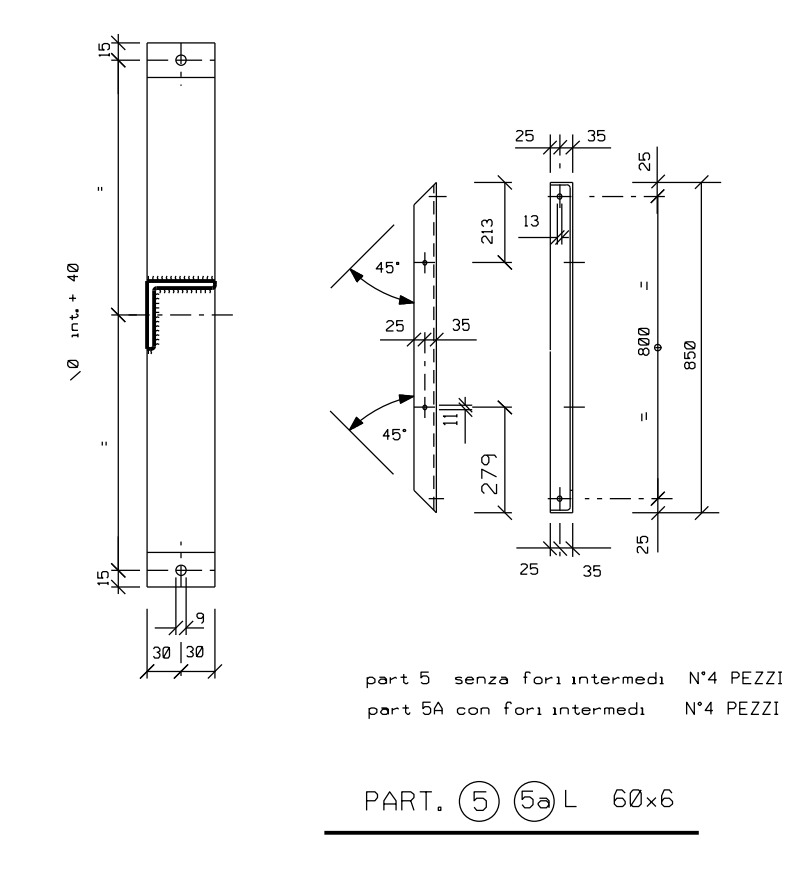
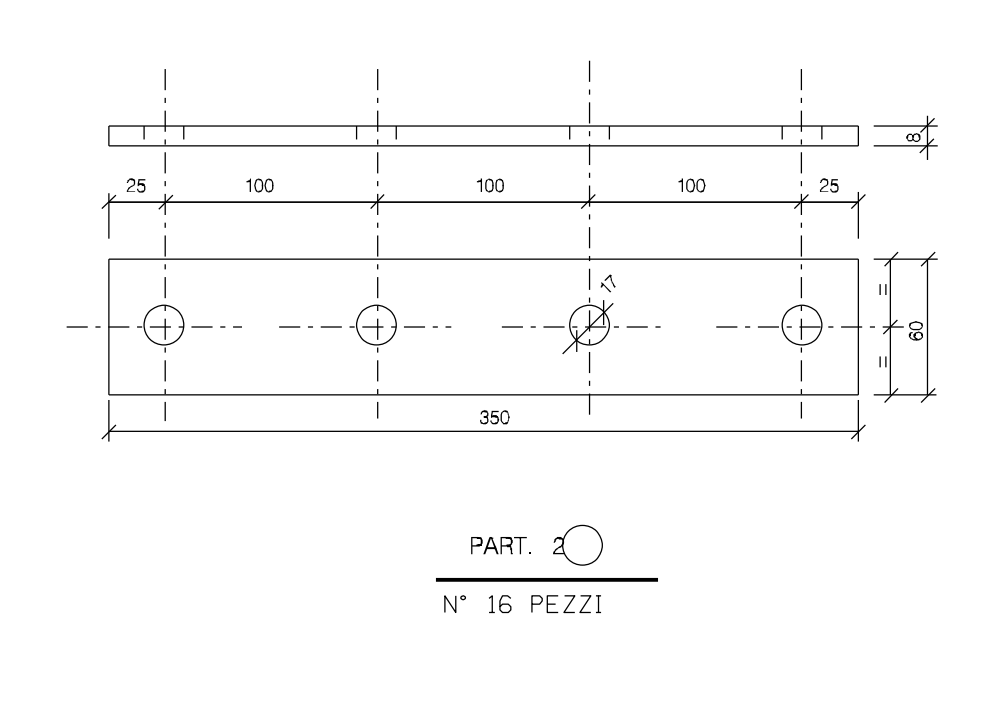
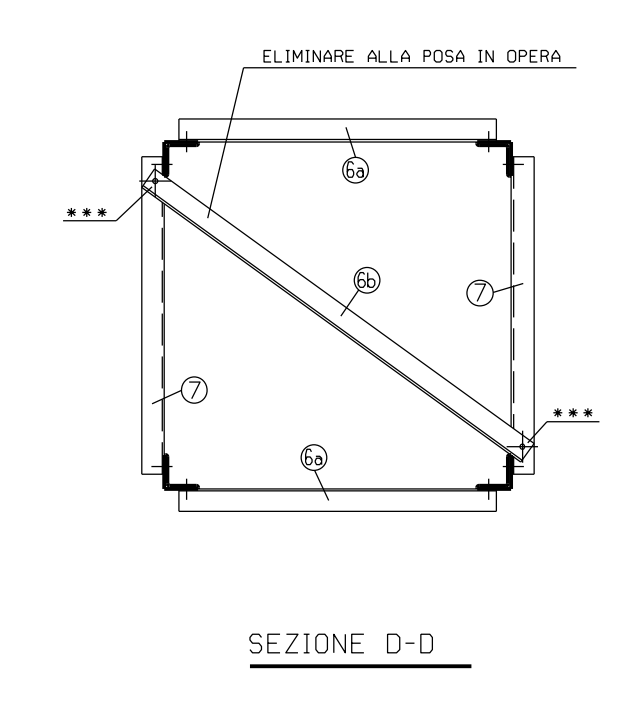
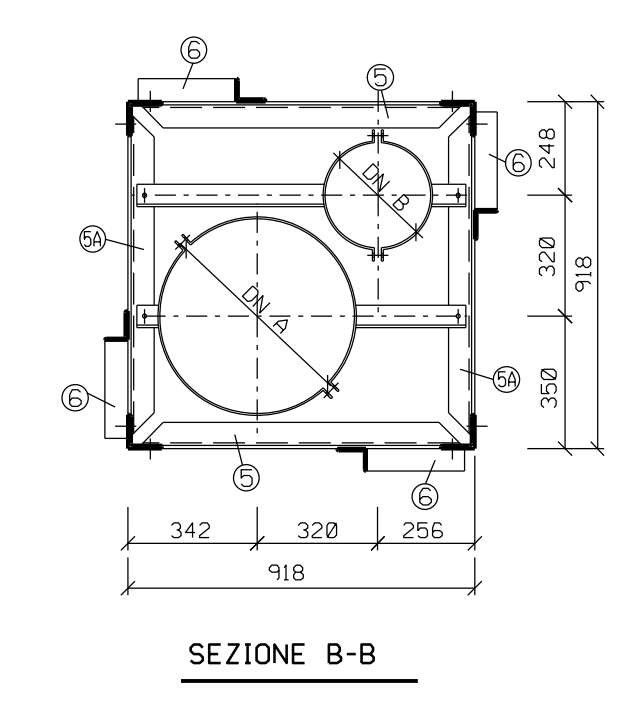
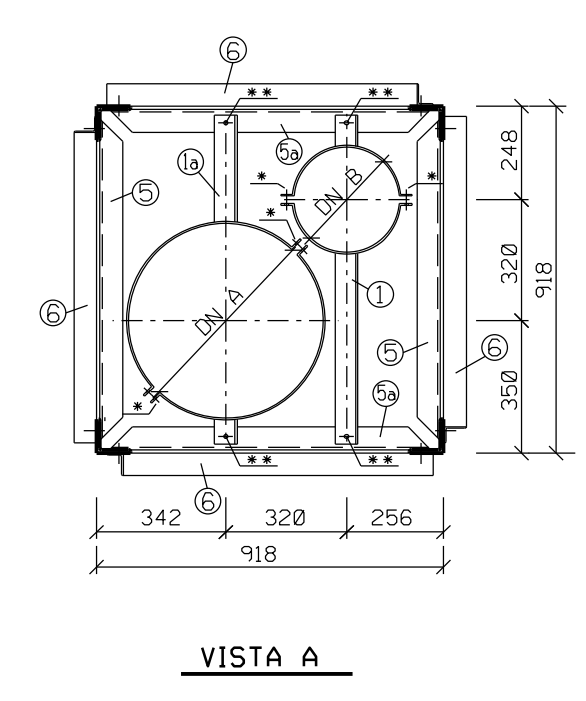
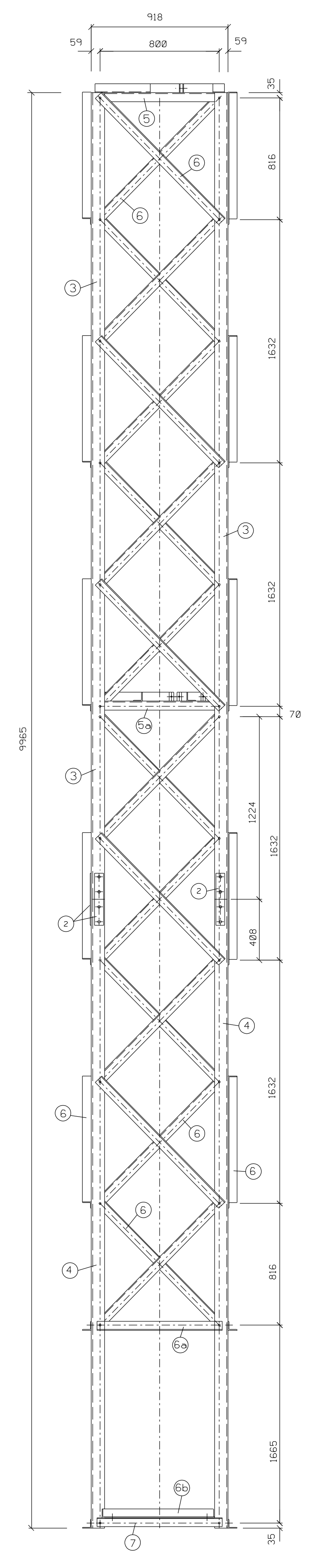
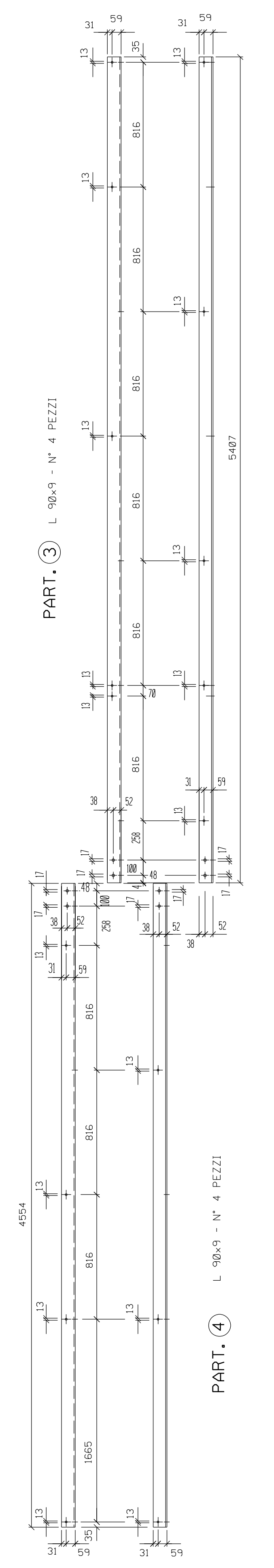
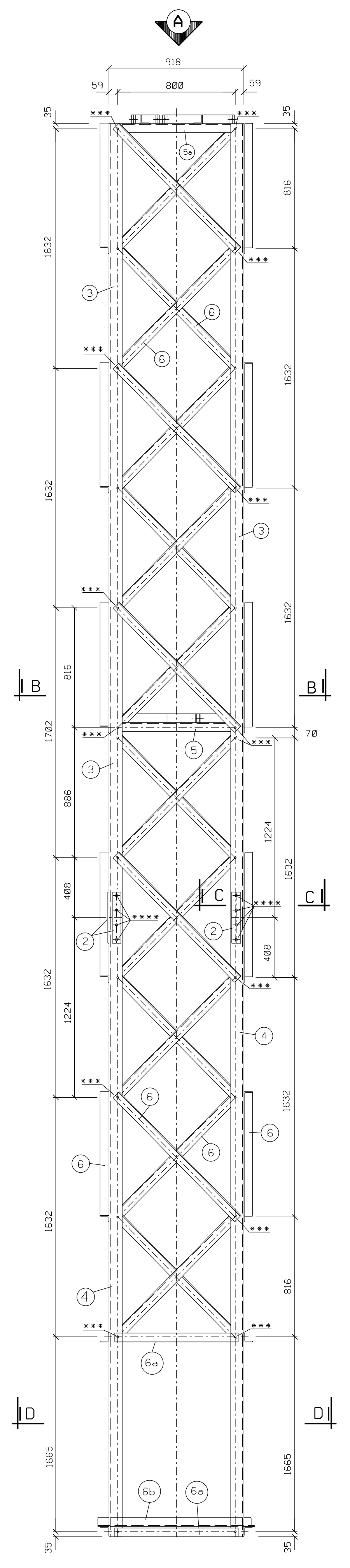


NOTE :

- MATERIALE PROFILATI E LAMIERE : S235 UNI EN 10025
- PROFILATI ANGOLARI AD ALI UGUALI UNI EN 10056
- TUTTA LA CARPENTERIA DOVRA' ESSERE ZINCATA A CALDO SECONDO UNI EN ISO 1461
- PESO TOT. = kg 850



	a	b
1	306	524
1a	626	204

DN	Ø int.
100	119
150	173
200	224
250	278
300	329
400	418
500	513

RIF.	DENOMINAZIONE	N°PEZZI	MAT. W.TE.	MAT. DIAGN.	TRATT.
•	W10x40 - 6,8 data: W8 - 6 secondo UNI EN 10368 - 1	8	8		
••	W10x30 - 6,8 data: W7 - 6 secondo UNI EN 10368 - 1	4	4		
•••	W12x25 - 6,8 data: W7 - 8 secondo UNI EN 14399 - 3	70	70		
••••	W6x45 - 8,5 data: W8 - 8 secondo UNI EN 14399 - 3	32	32		

2	23/06/2017	EMISSIONE PER APPALTO	MBEGNI	MBEGNI	PIRABO
1	31/05/2017	EMISSIONE PER COMMENTI	MBEGNI	MBEGNI	PIRABO
0	26/08/2016	EMISSIONE PER COMMENTI	MBEGNI	MBEGNI	PIRABO
Rev.	DATA	DESCRIZIONE	ELABORATO	VERIFICATO	APPROVATO
			COMPRESA CODICE TECNICO NR/13167 1053		
MET. INTERCONNESSIONE TAP DN 1400 (56") DP 75 bar IMPIANTO DI MELENDUGNO TRALICCIO SOSTEGNO DOPPIA CANDELA					DIS. N. CIV-119 REVISIONE 2 FG. 1 DI 1 SCALA 1:20