

RIFERIMENTO

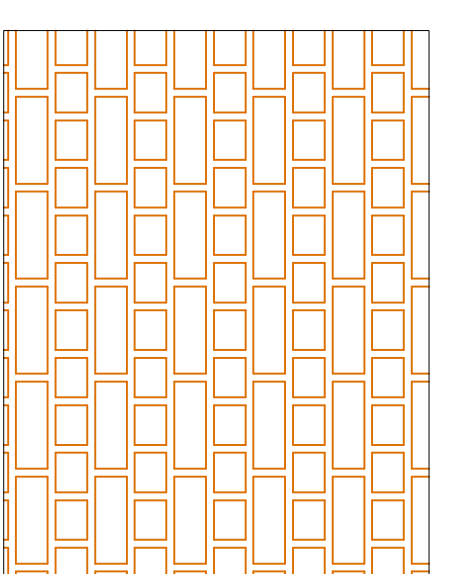
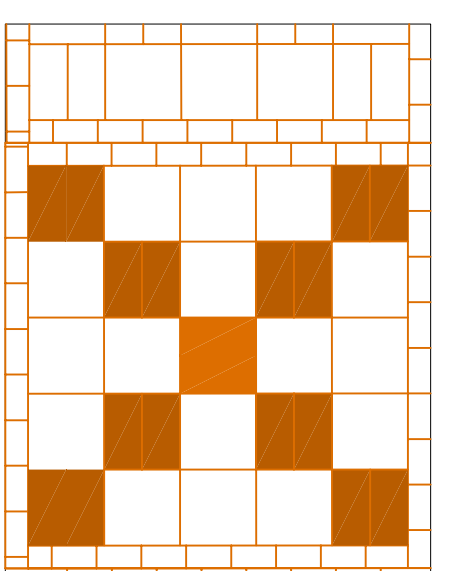
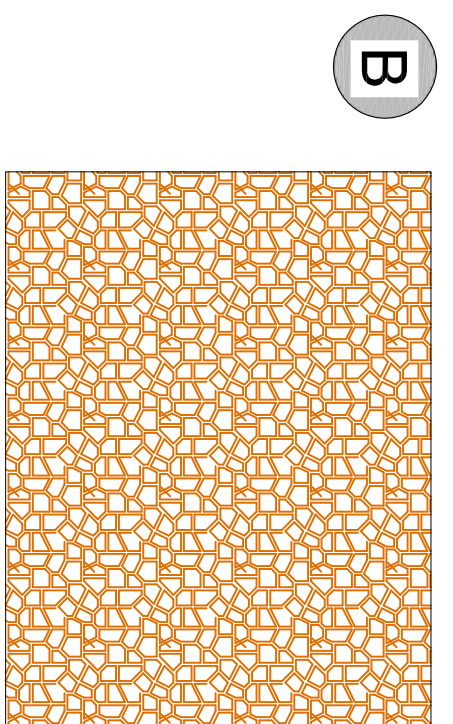
TESSITURA

STRATIGRAFIA

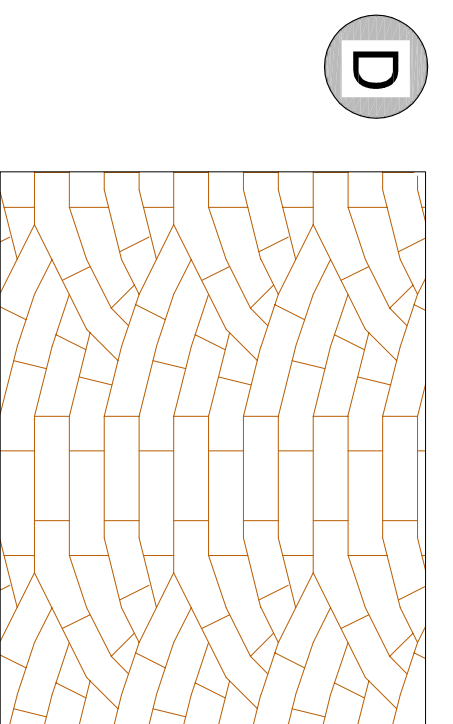
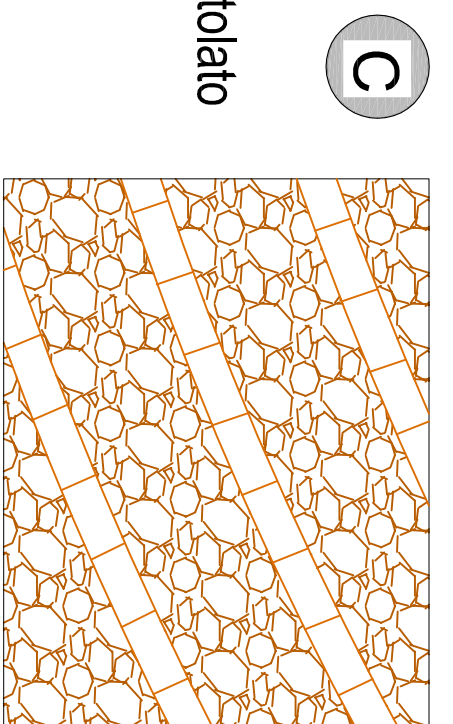
Pavimentazione in C/S colorato



Pavimentazione in Monostriato Vulcanico

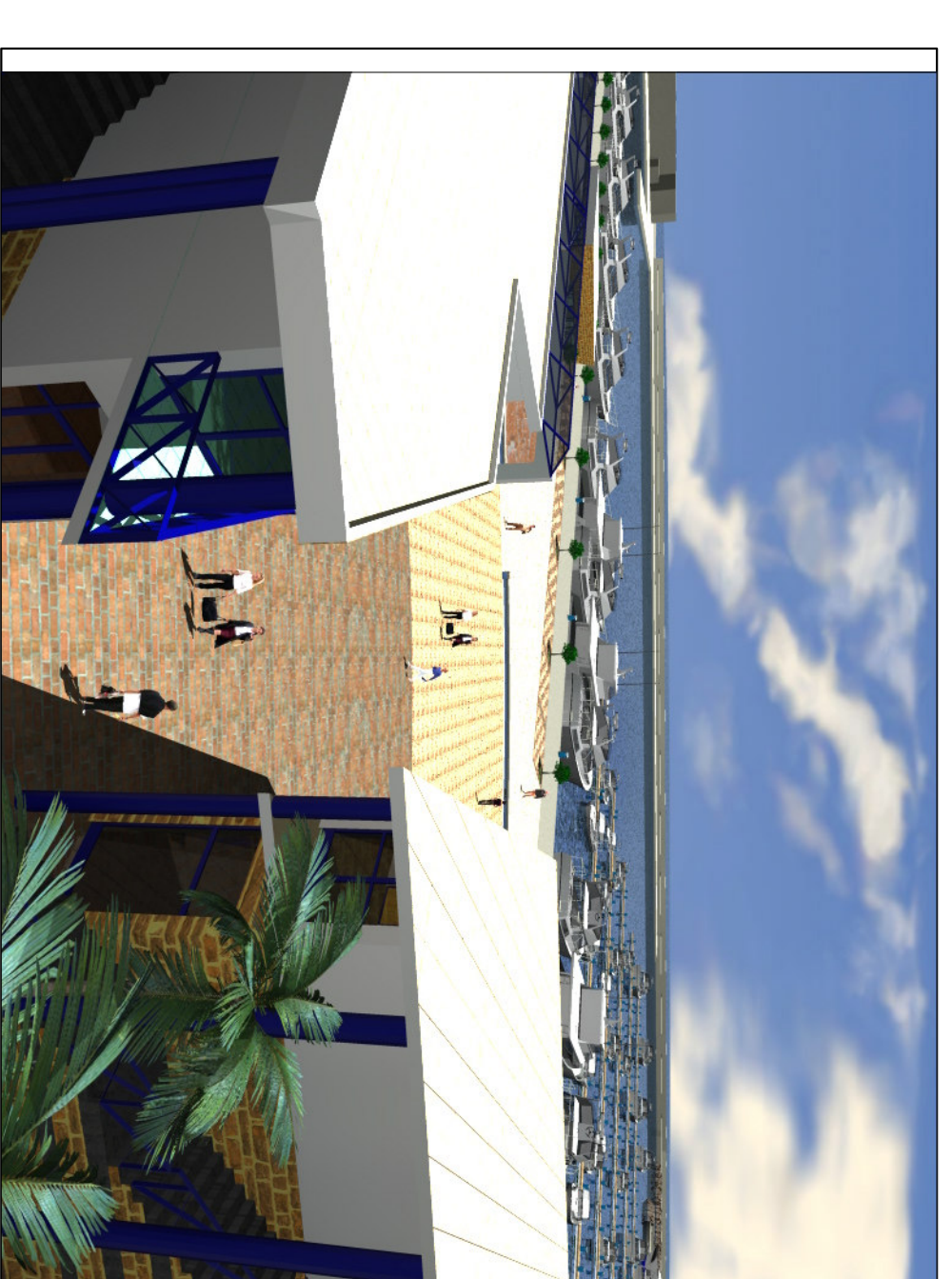
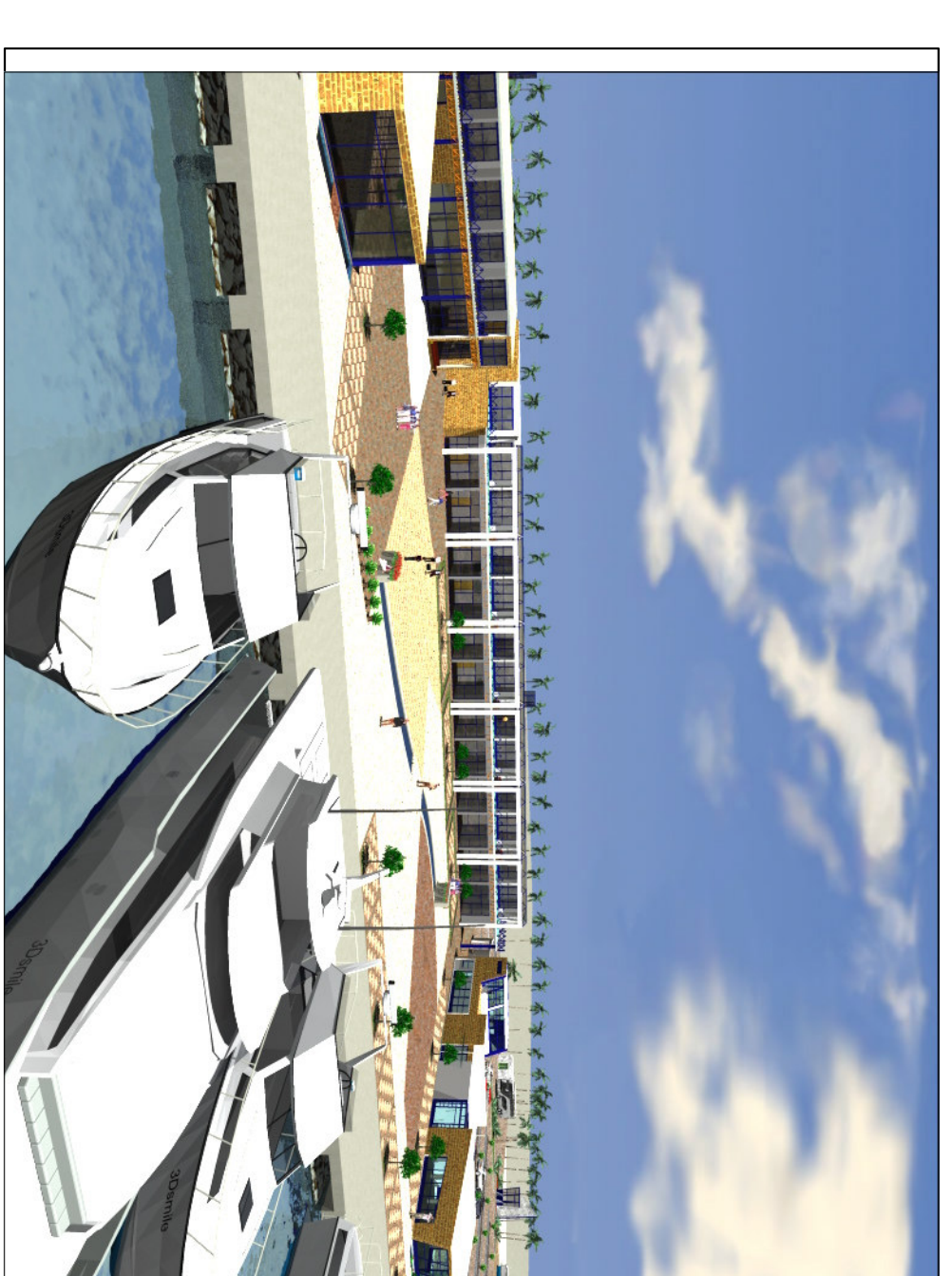
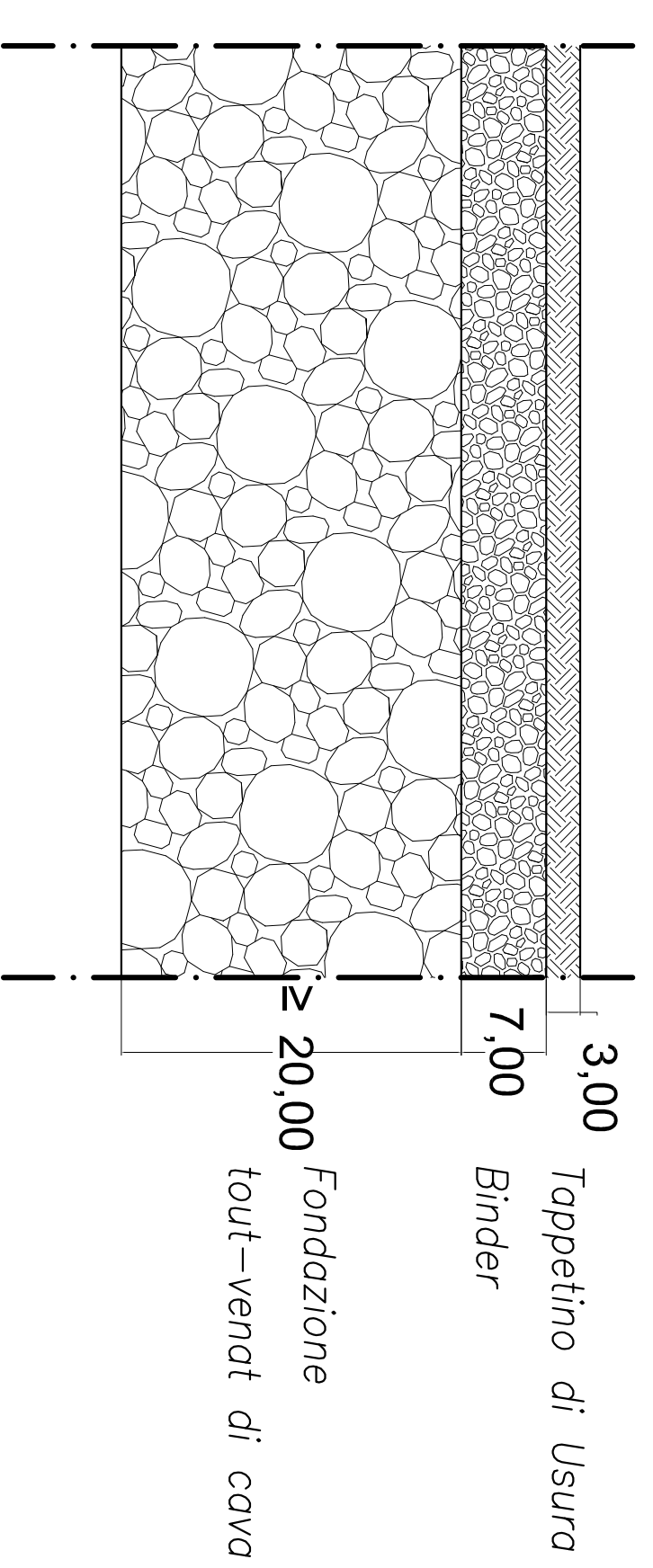
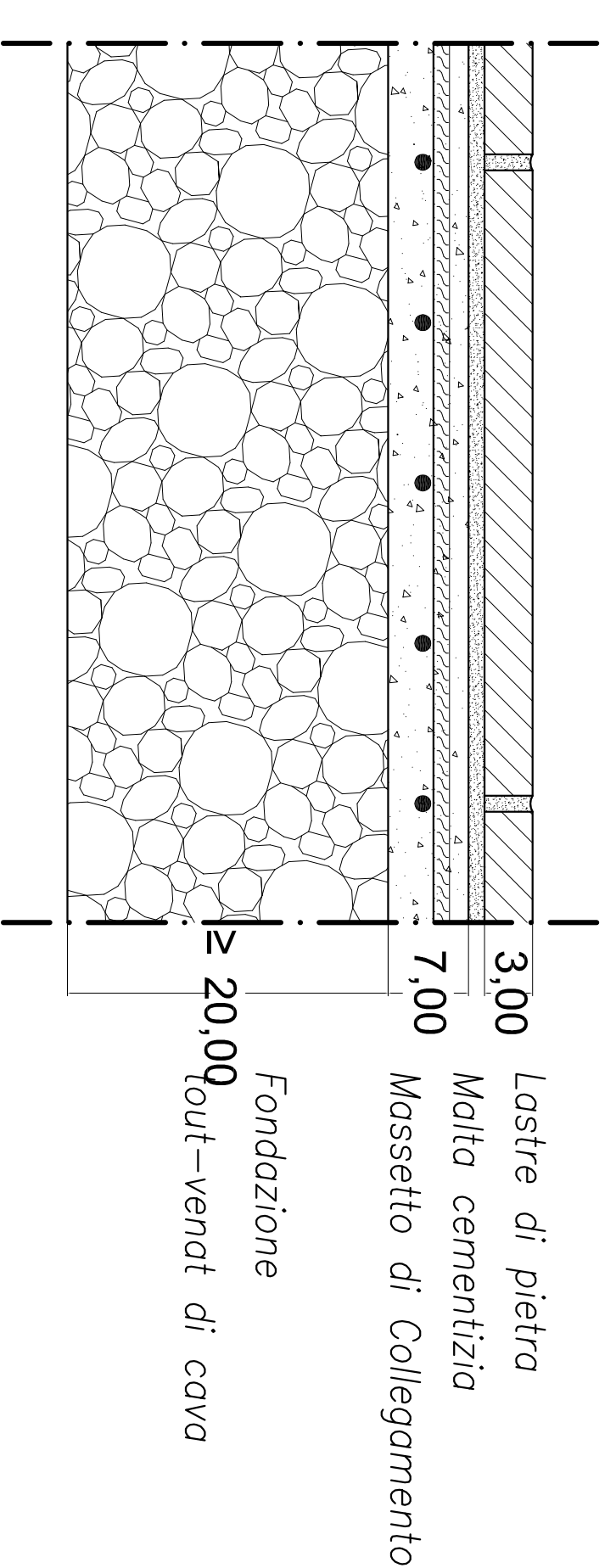
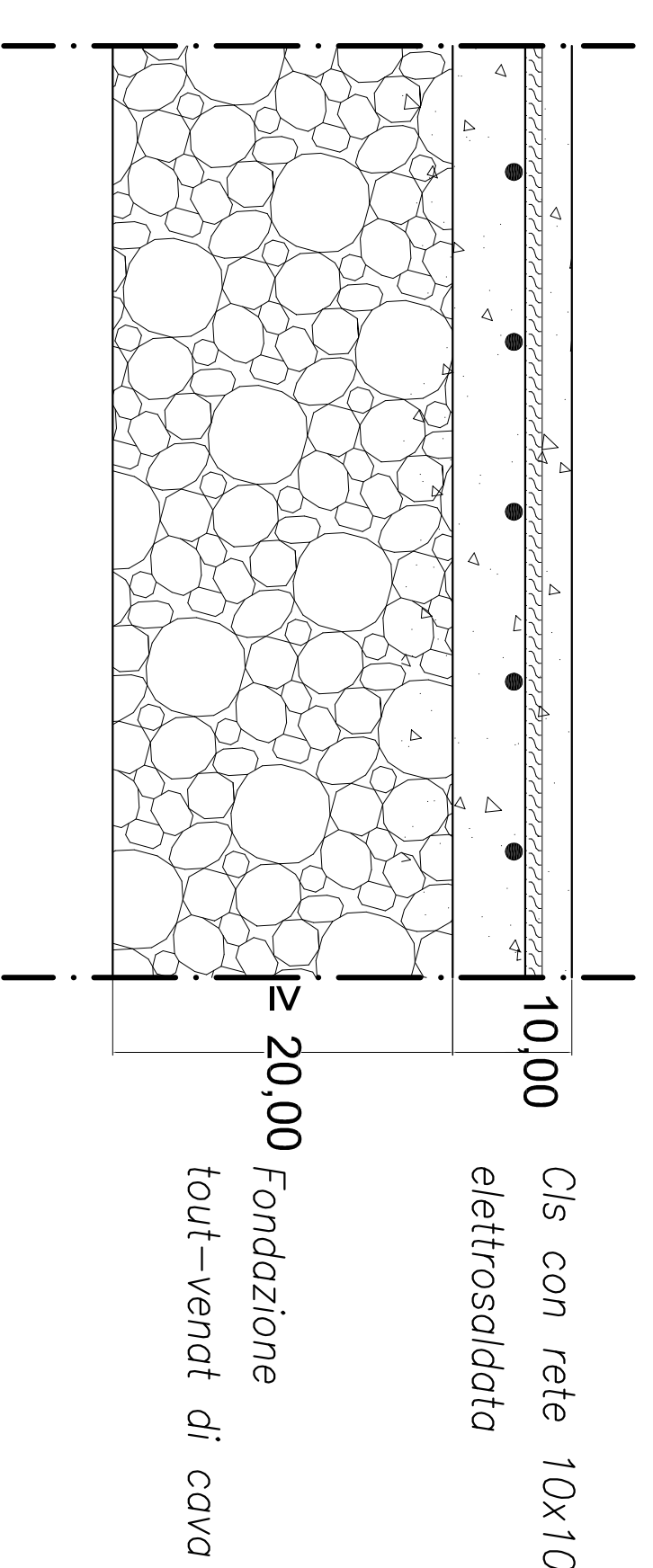
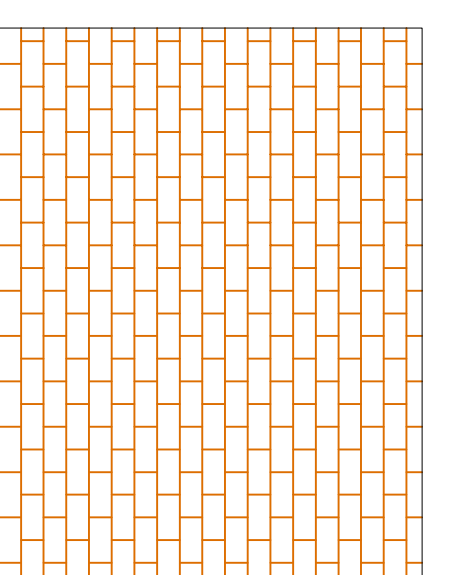
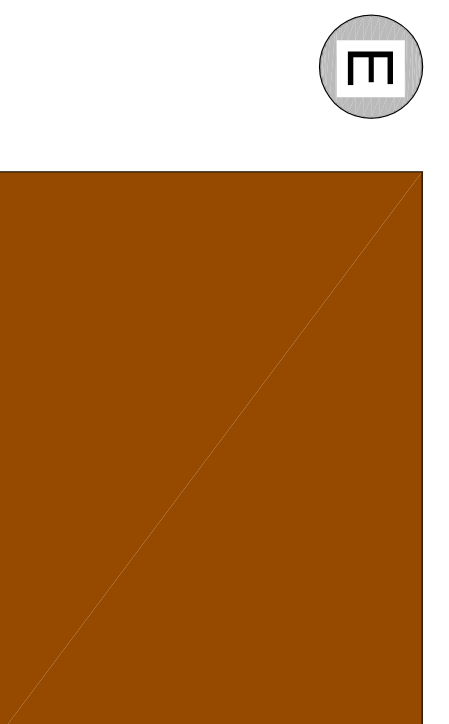


Pavimentazione in Monostriato Vulcanico e acciottolato

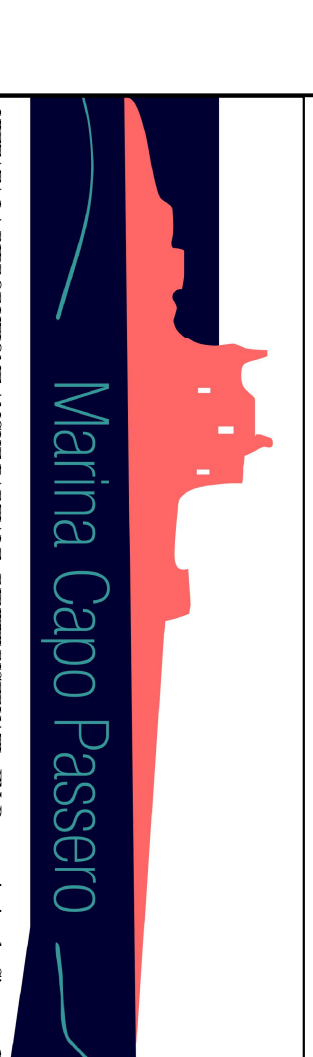


Pavimentazione in Porfido

Pavimentazione in asfalto colorato e mattonelle d'astalo colorato



Port-ONE
PORTO TURISTICO
IN
PORTOPALO DI CAPO PASSERO
SIRACUSA



7.10
Ing. Francesco Nobile
Arch. Giuseppe Romano

PROGETTO DEFINITIVO

FN PROGETTAZIONI
Società di Ingegneria s.r.l.

0	2	3	0	6	0	P	0	8	0	2	0	0	0
0	2	3	0	6	0	P	0	8	0	2	0	0	0

ST	DATA	DESCRIZIONE DELLA MODIFICA	INFORMAZIONI
3	06-06-08	PRIMA EMISSIONE	APPROVA