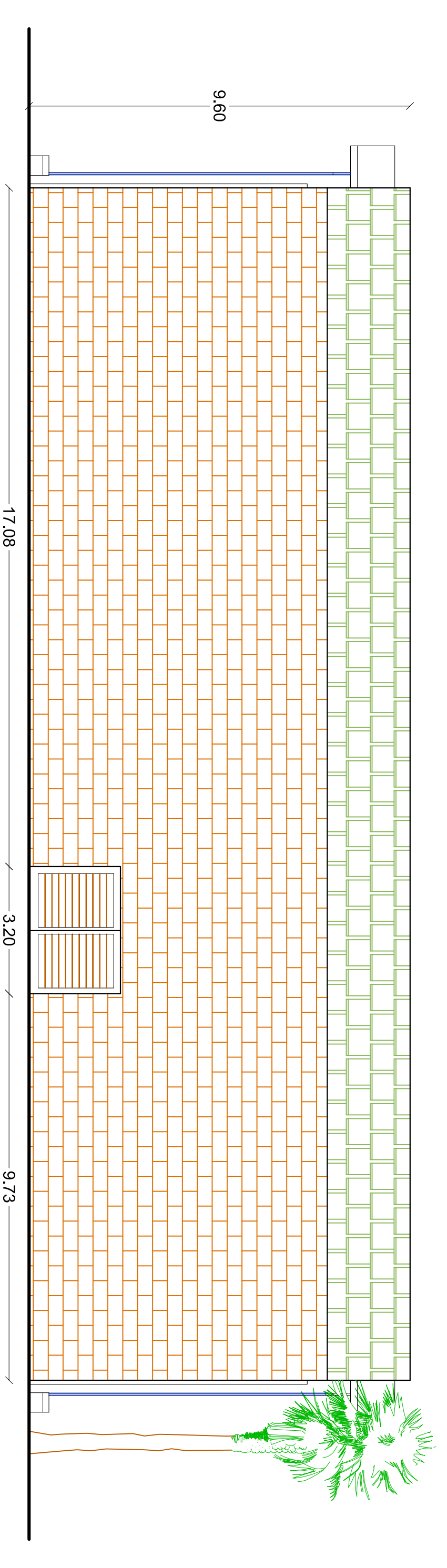
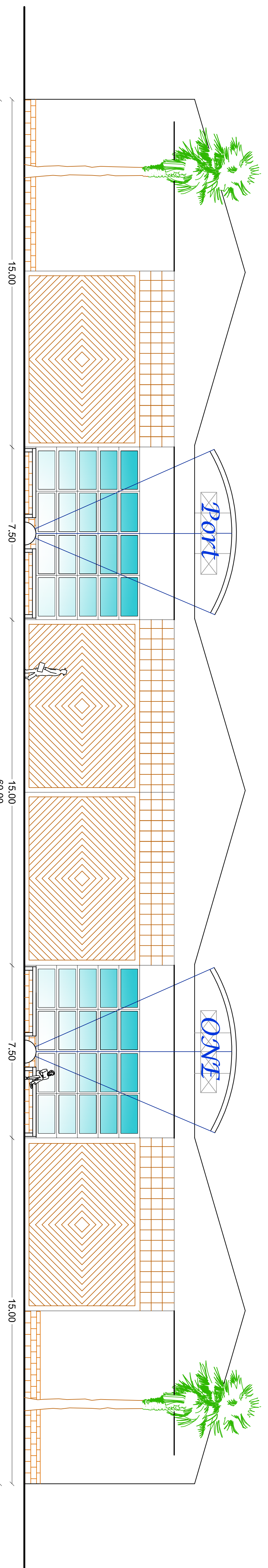


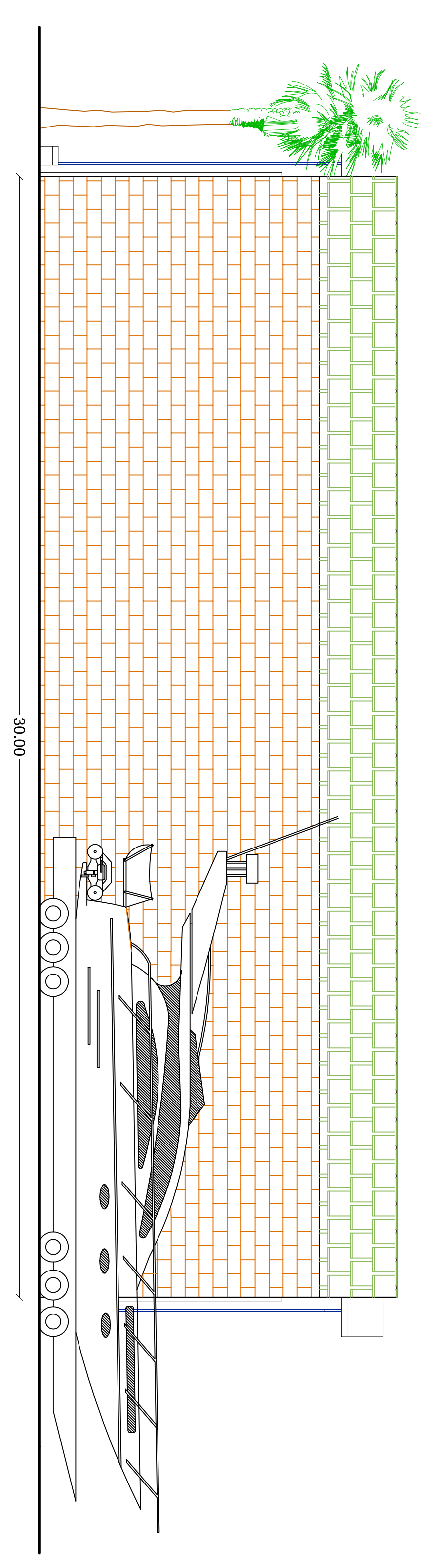
Prospetto Nord - Est



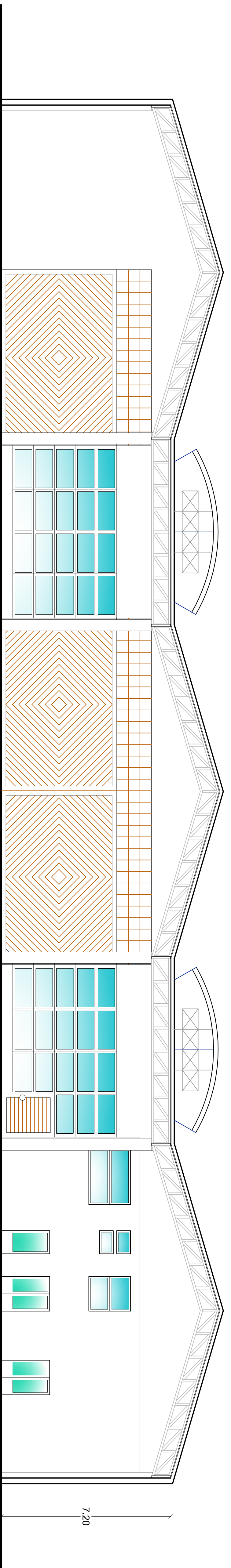
Prospetto Nord - Ovest



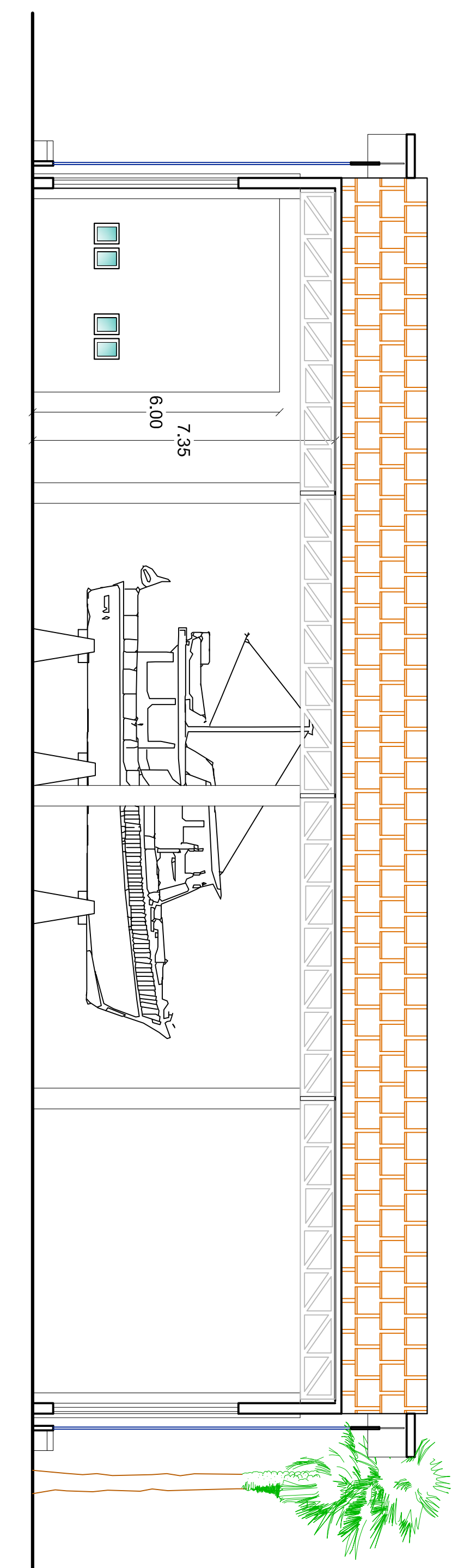
Prospetto Sud - Ovest



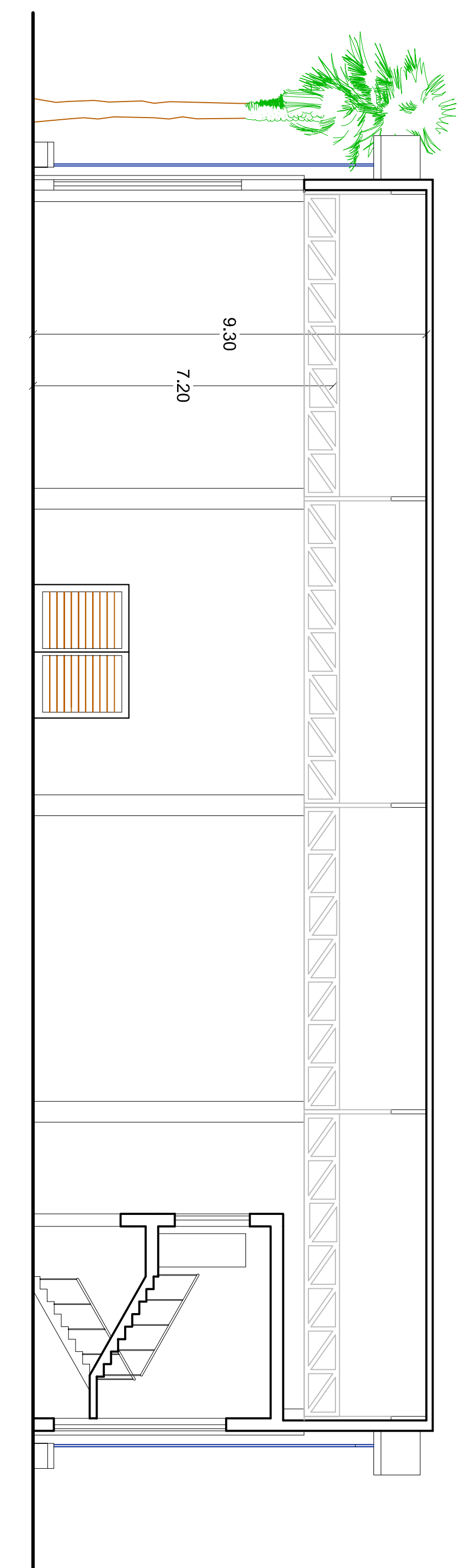
Prospetto Sud - Est



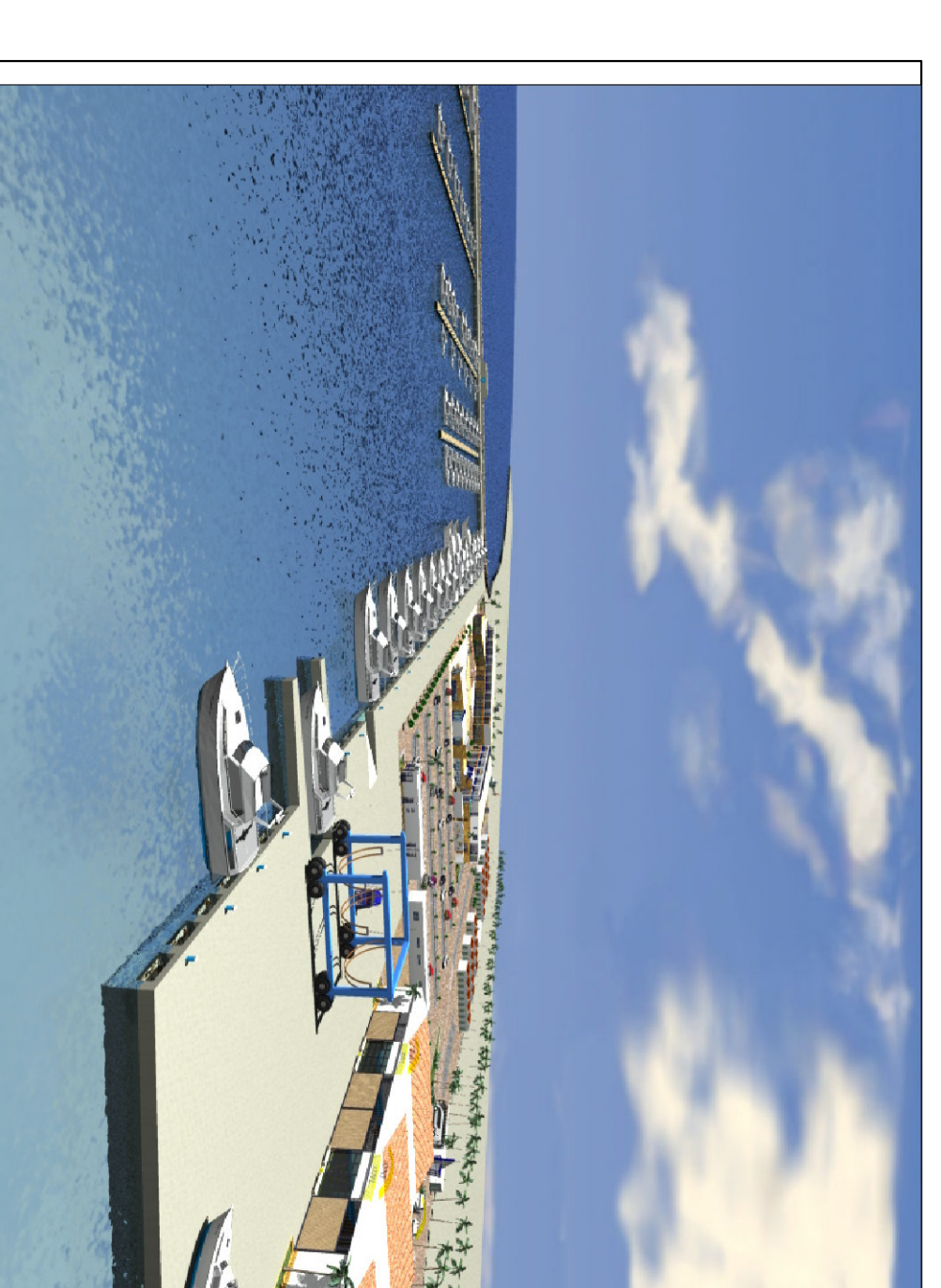
Sezione A-A



Sezione B-B



Sezione C-C



<p>Port-ONE PORTO TURISTICO IN PORTOPALO DI CAPO PASSERO SIRACUSA</p>		<p>Marina Capo Passero</p>
<p>8.4</p>	<p>Capo "L" - Progetti e Servizi</p>	<p>1/100</p>
<p>Aut. Francesco Nobile</p>		
<p>Aut. Giuseppe Romano</p>		
<p>PROGETTO DEFINITIVO</p>		
<p>FN PROGETTAZIONI Società di Ingegneria s.r.l.</p>		
<p>STRUTTURA: AZIENDA CON QUADRO SISTEMI: LINEE DA 20KV E 10KV CANTIERE: SERRAVALLE (SIRACUSA)</p>		
<p>1:2000</p>		
<p>STATO DELLE OPERAZIONI</p>		
0	OK-CAD/3D	PRIMA EMISSIONE
1	DATA	TRACIA
		APPROVA