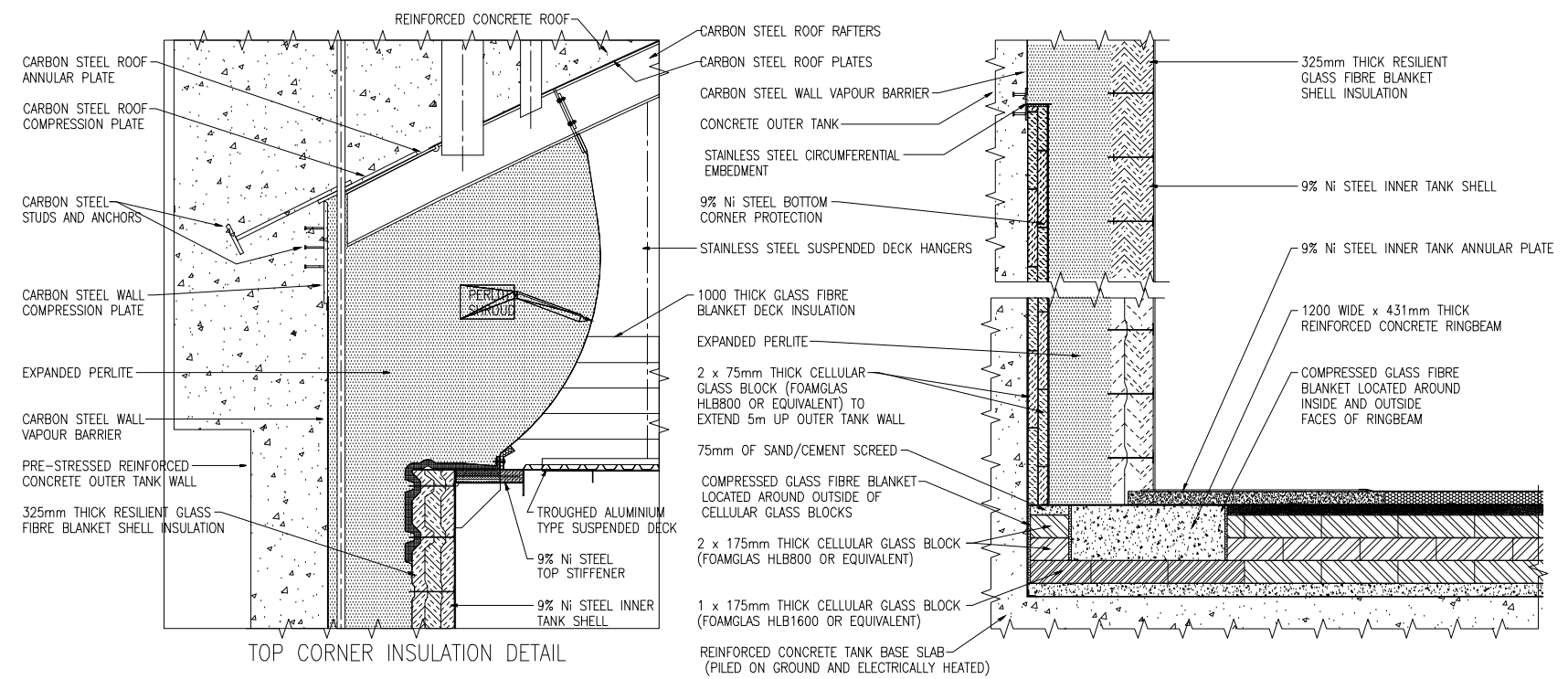


GENERAL ARRANGEMENT OF 32,000 CU M FULL CONTAINMENT LNG STORAGE TANK



TOP CORNER INSULATION DETAIL

| | | | | | | | |
|--|----------------------------------|--|---------------------------------|------------|--------------------------------------|--------------------|----------|
| | PROGETTO/PROJECT | TITOLO/TITLE | FIRMA/SIGNATURE | DATA/DATE | CLIENTE/CLIENT | FOGLIO/SHEET | REV. No. |
| | DEPOSITO COSTIERO GNL A MARGHERA | SERBATOIO GNL - TIPICO GENERAL ARRANGEMENT | ESEGUITO / BY TMS | 12/01/2018 | Venice LNG S.p.A. | 1 di 1 | 0 |
| | | | CONTROLLATO DA / CHKD BY ALS | 12/01/2018 | N° INT/INTERNAL N° 17-556-CIV-M22 | SCALA/SCALE --- | |
| | | APPROVATO DA / APPROVED BY ALN | 12/01/2018 | | | | |