




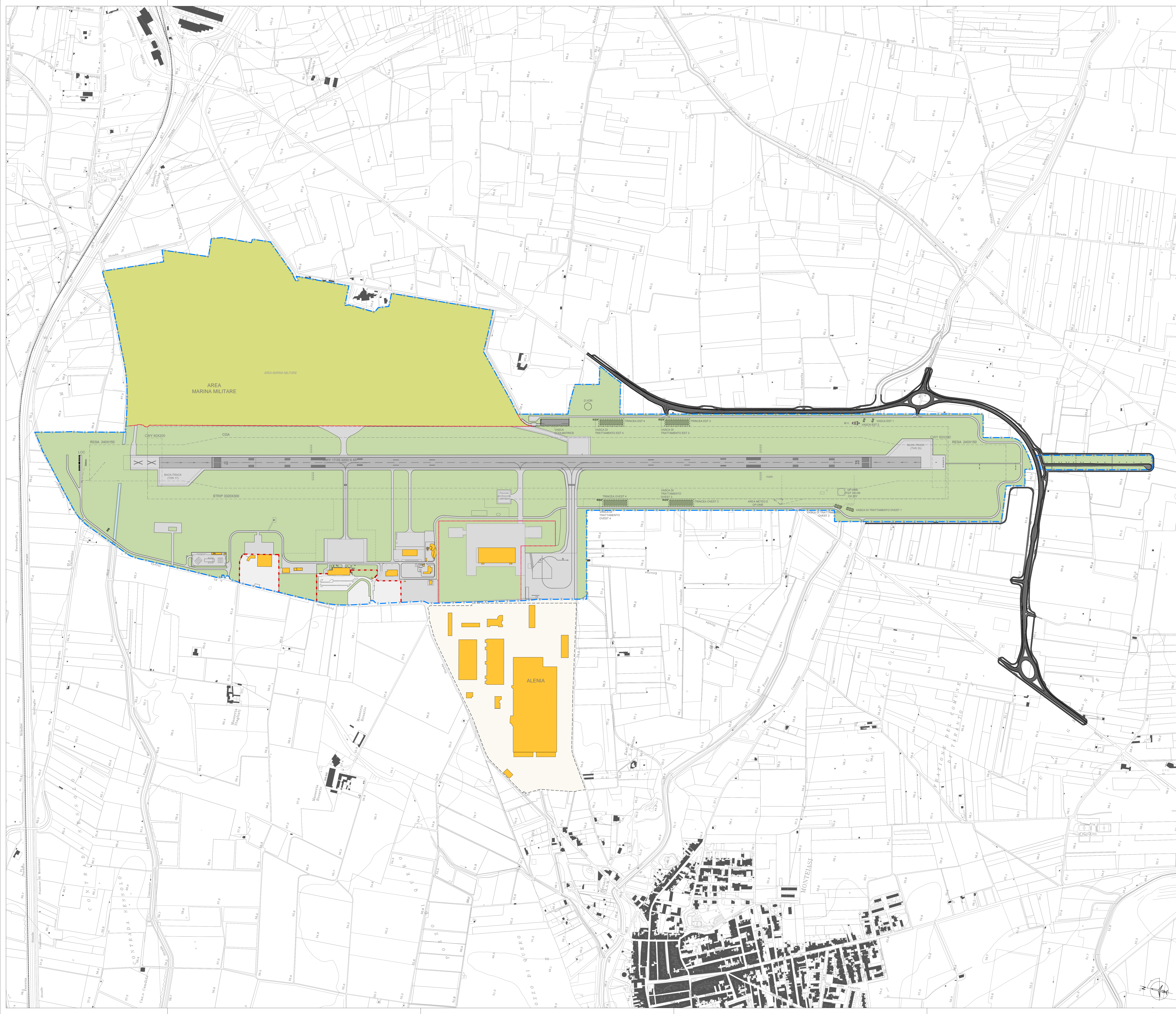


**LEGENDA**

-  LINEA FERROVIARIA
-  CONFINE AEROPORTUALE
-  CONFINE AIR SIDE - LAND SIDE
-  EDIFICI E AREE ESISTENTI
-  PISTE E PIAZZALI
-  VERDE INTERPISTA
-  CONFINI COMUNALI



Committente:  
**AEROPORTI DI PUGLIA**  
 Direzione Generale/Accountable Manager: Dott. Marco Franchini  
 Responsabile del Procedimento: Ing. Donato D'Aurita  
 Progettisti:  
 Emmissione 2015 - 2016  
**INGENOVIS**  
 S.p.A. - Via S. Maria  
 70121 - Taranto (TA)  
 Emisione 2017  
**inide** - Ing. Mauro Di Prato  
 Ord. Ing. di Roma n. 14624  
**STEAM** - Ing. Gaetano Calvo  
 Ord. Ing. di Padova Sez. A - n. 3025



**AEROPORTO "MARCELLO ARLOTTA" DI TARANTO - GROTTAGLIE**  
**PIANO DI SVILUPPO AEROPORTUALE**