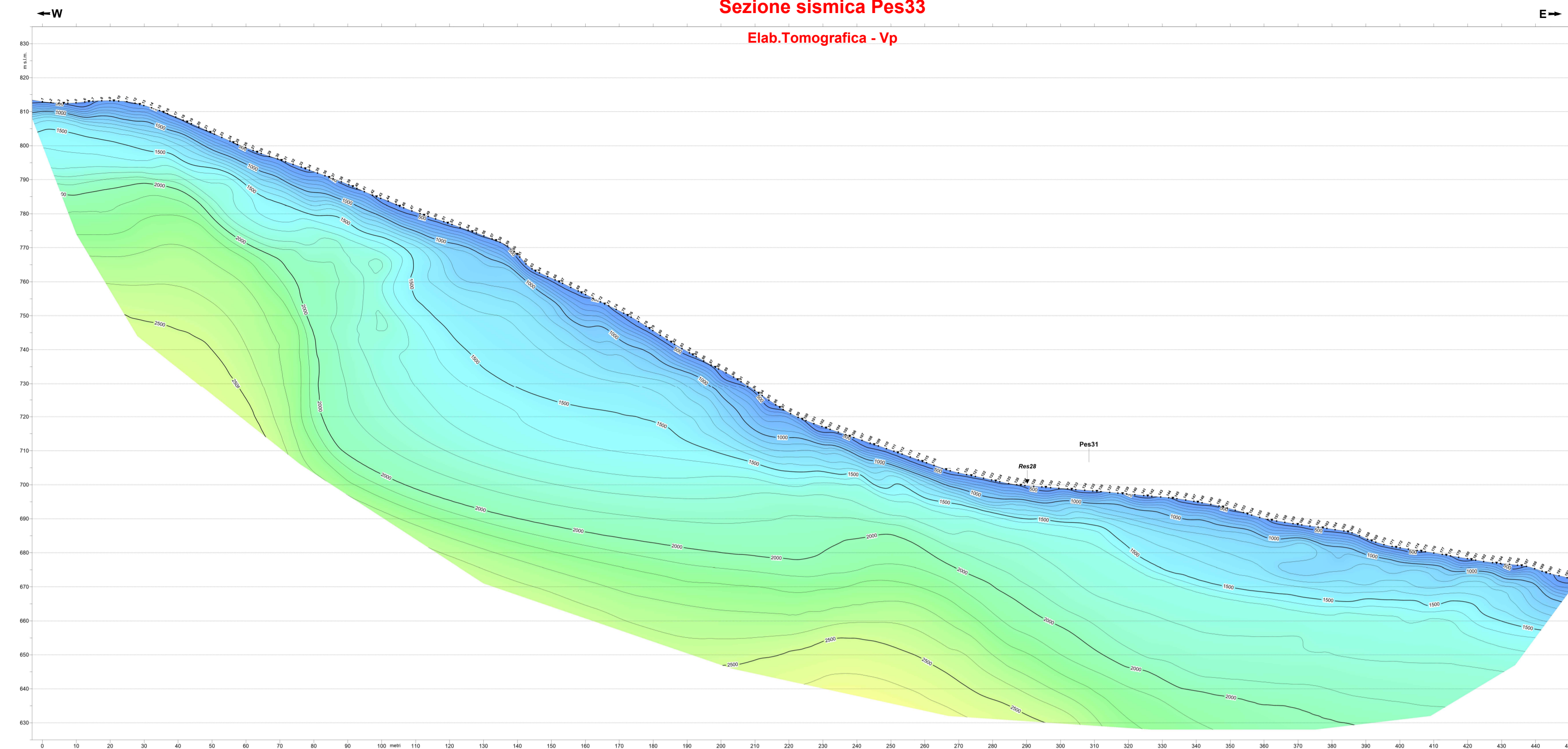
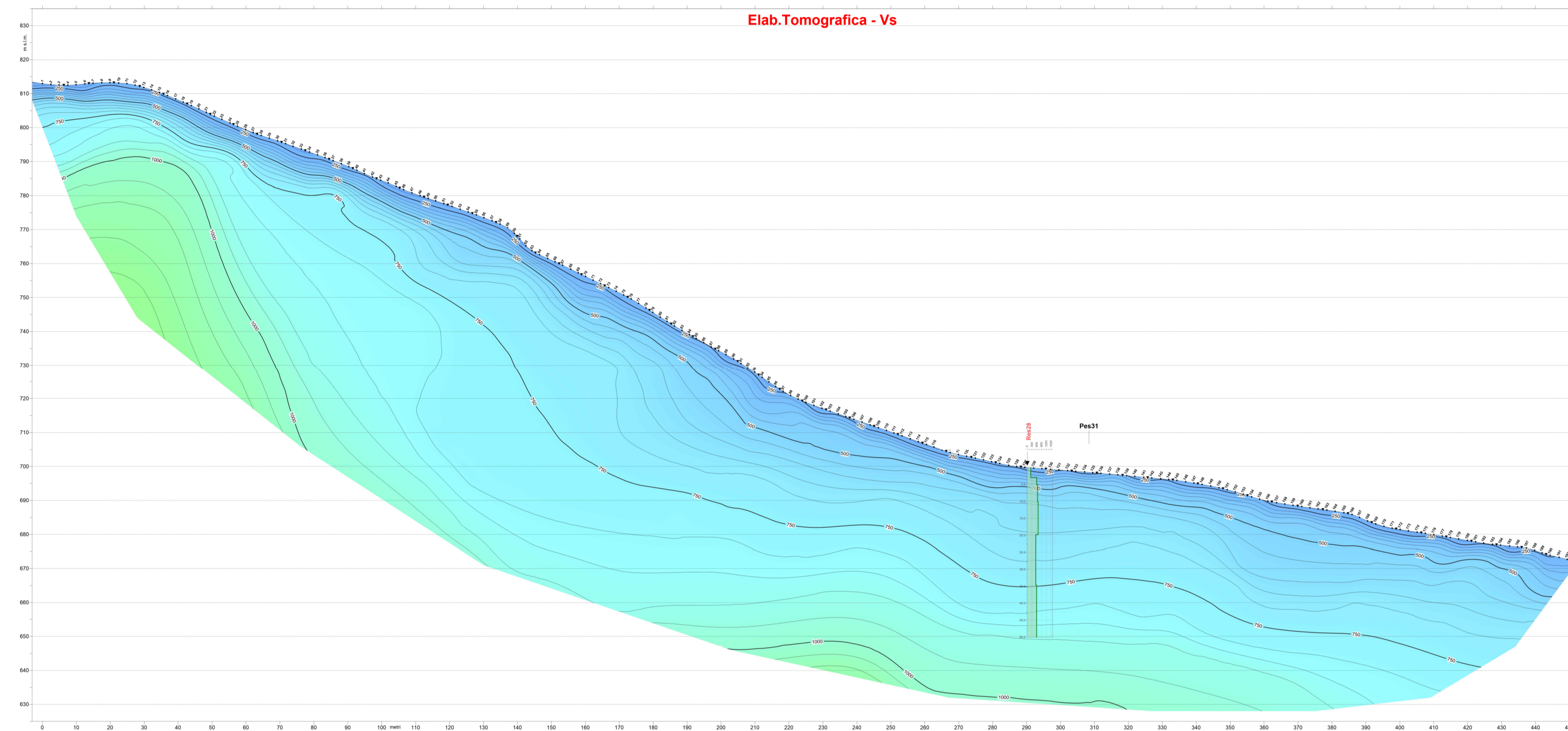


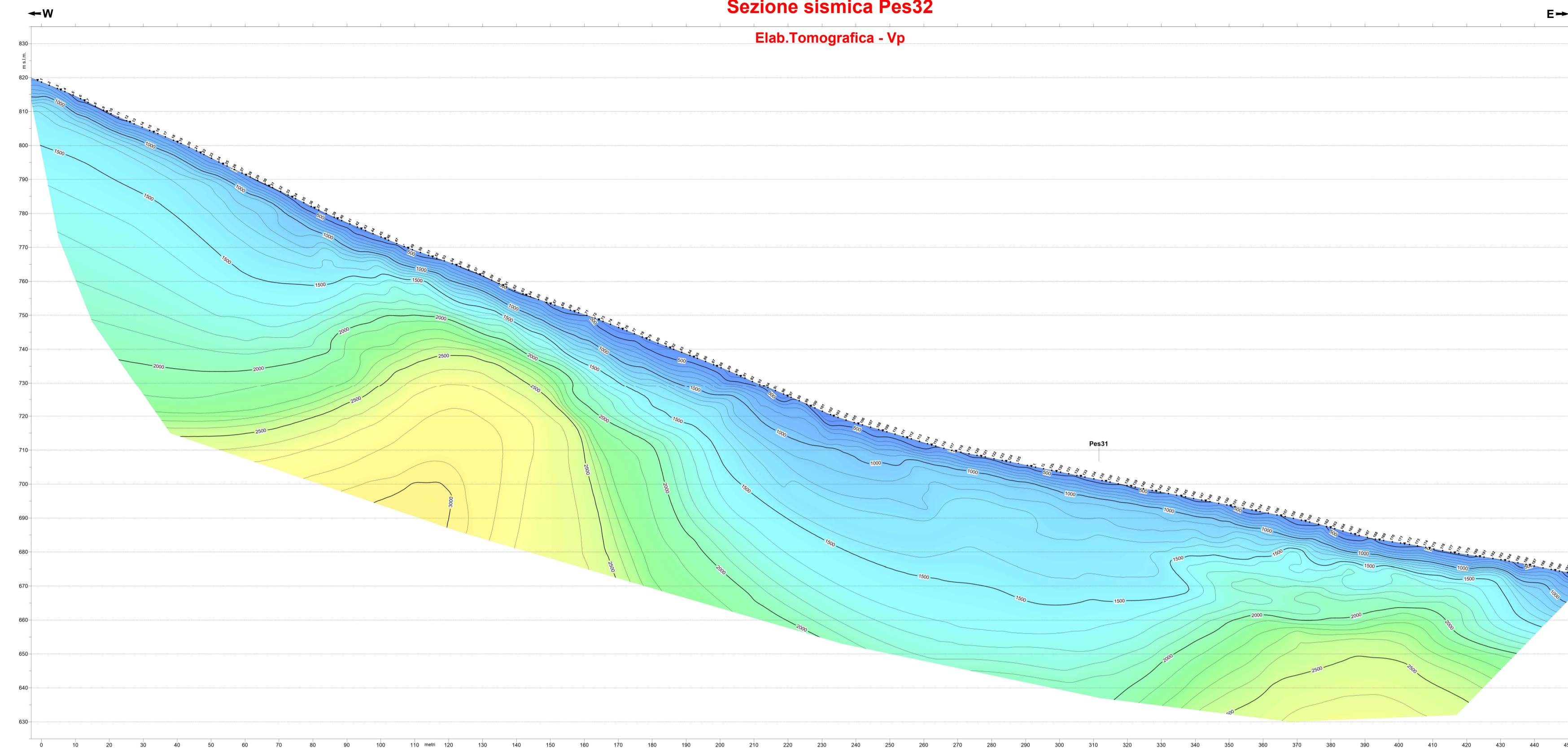
Sezione sismica Pes33
Elab. Tomografica - Vp



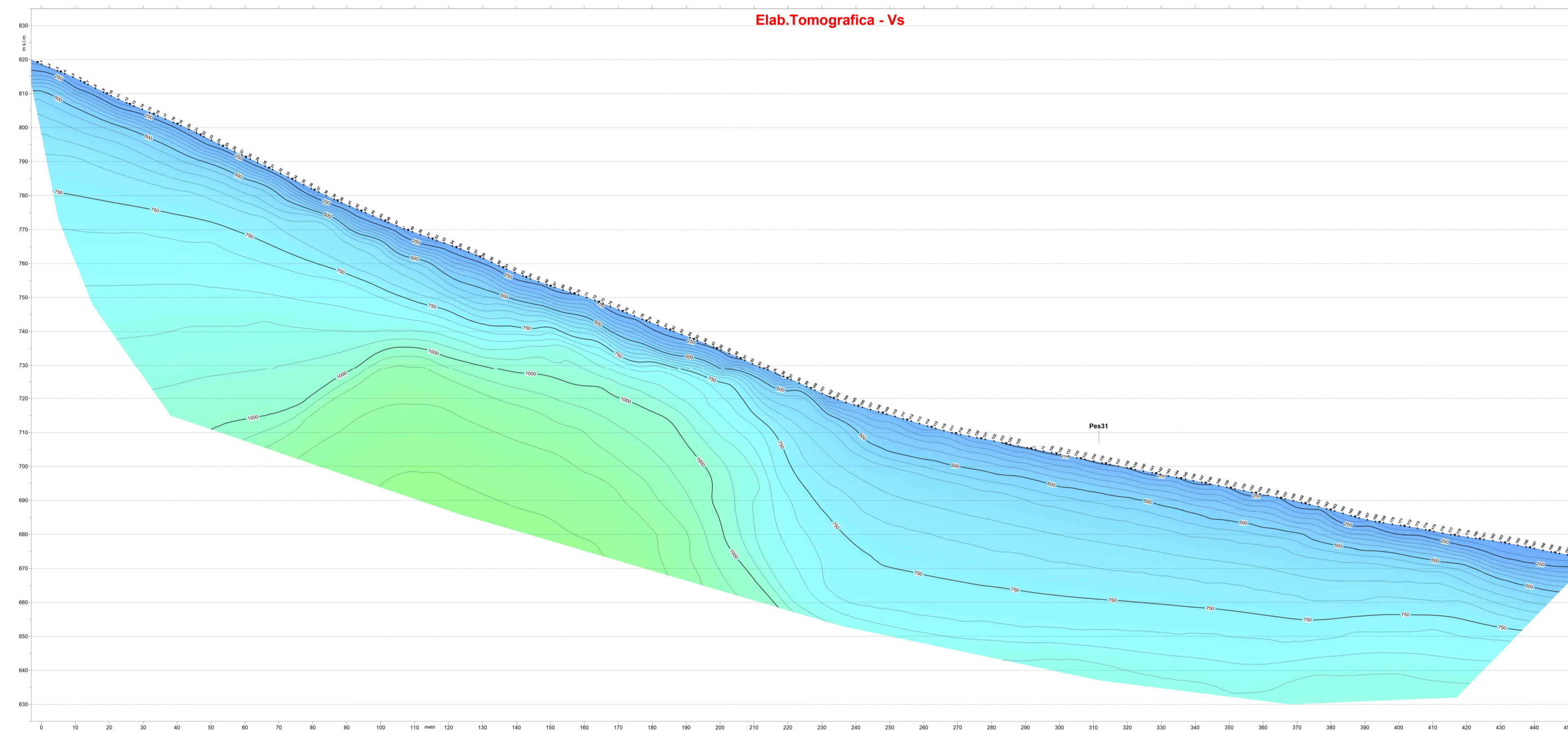
Elab. Tomografica - Vs



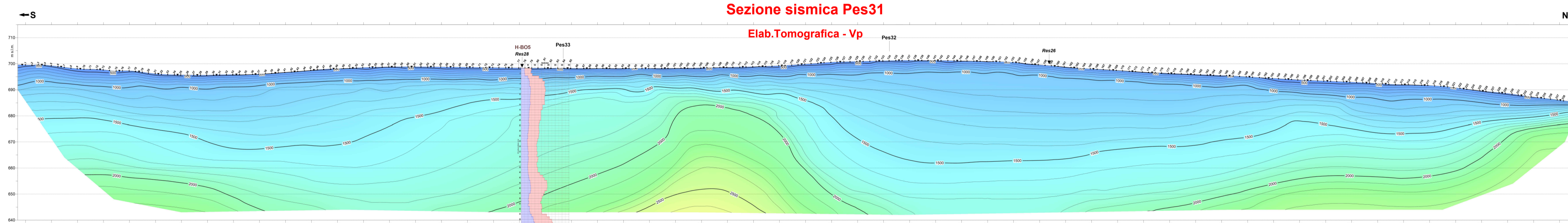
Sezione sismica Pes32
Elab. Tomografica - Vp



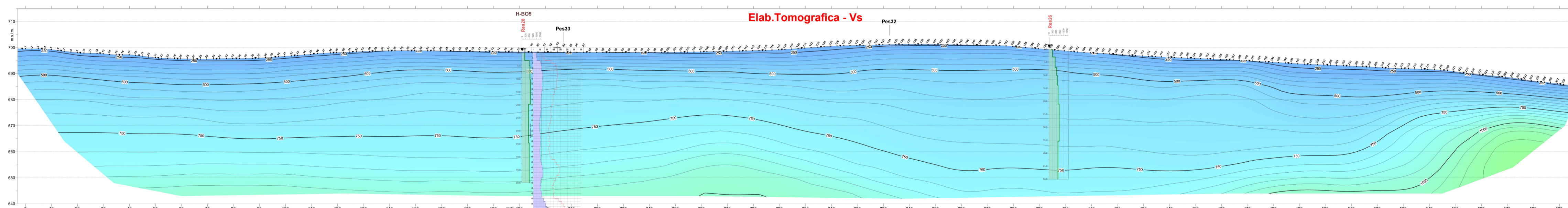
Elab. Tomografica - Vs



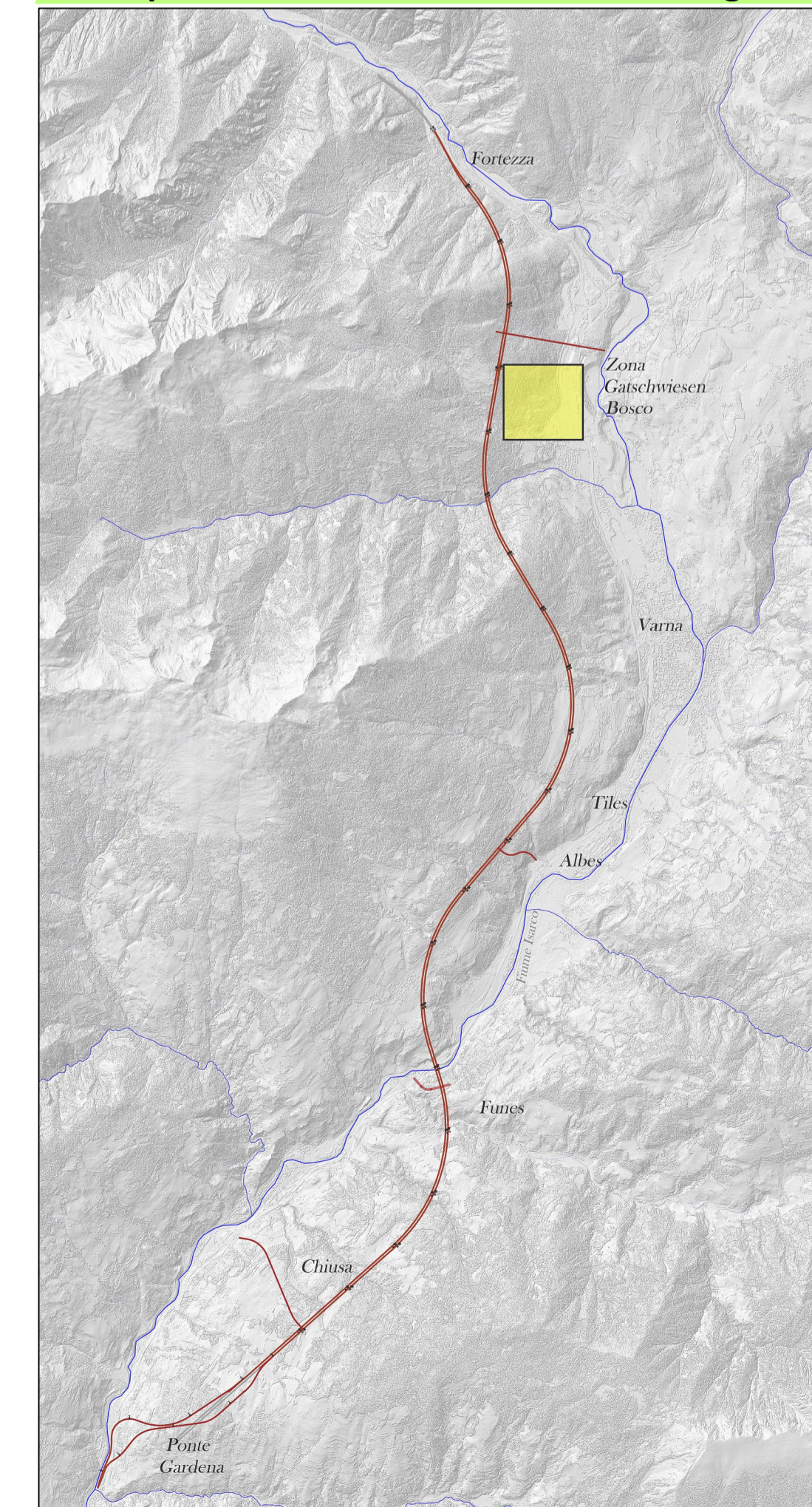
Sezione sismica Pes31
Elab. Tomografica - Vp



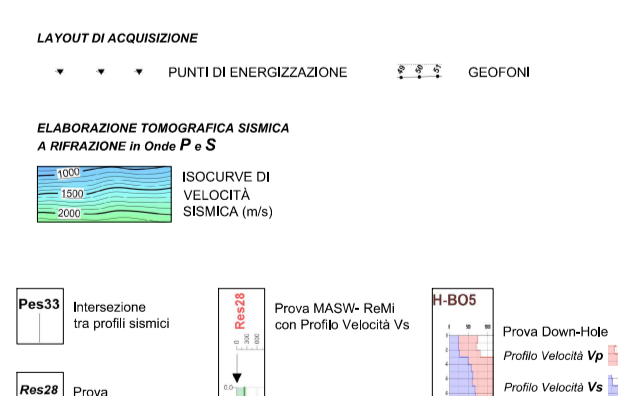
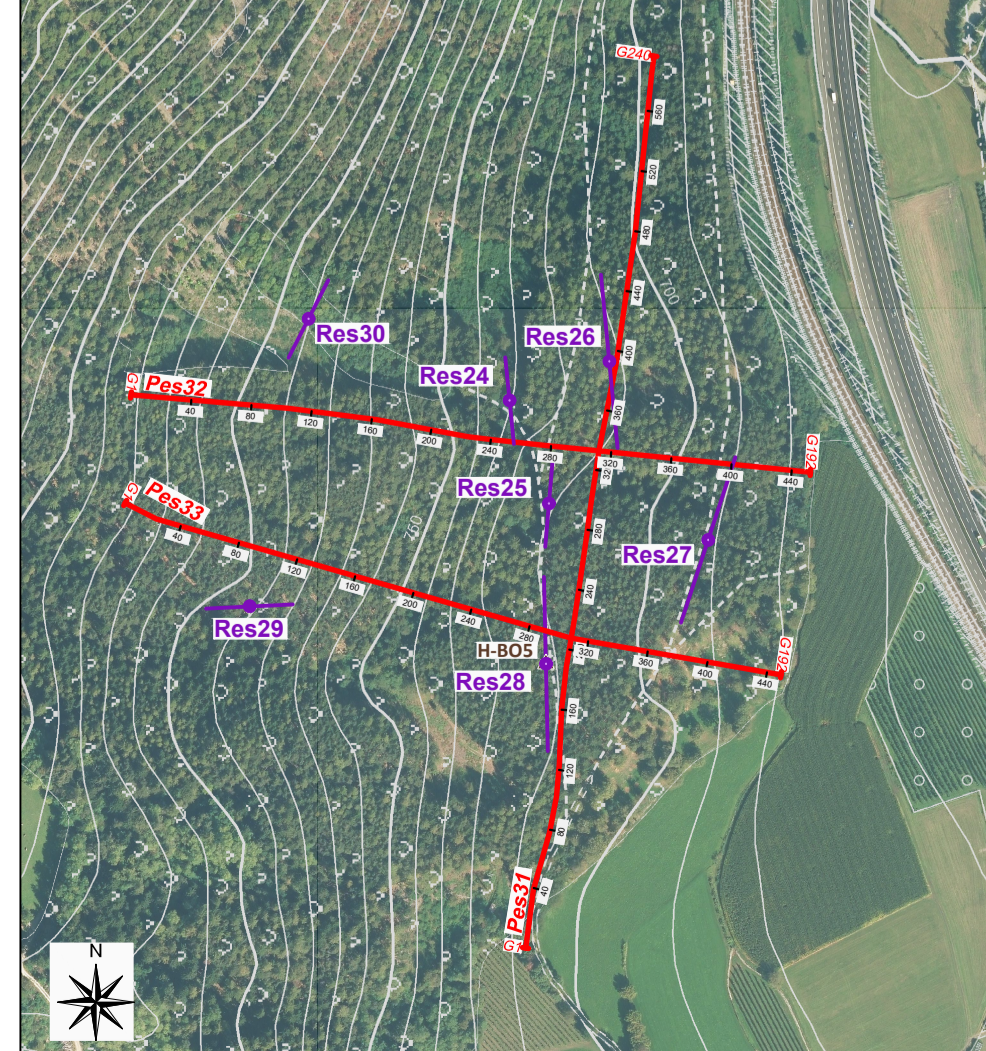
Elab. Tomografica - Vs



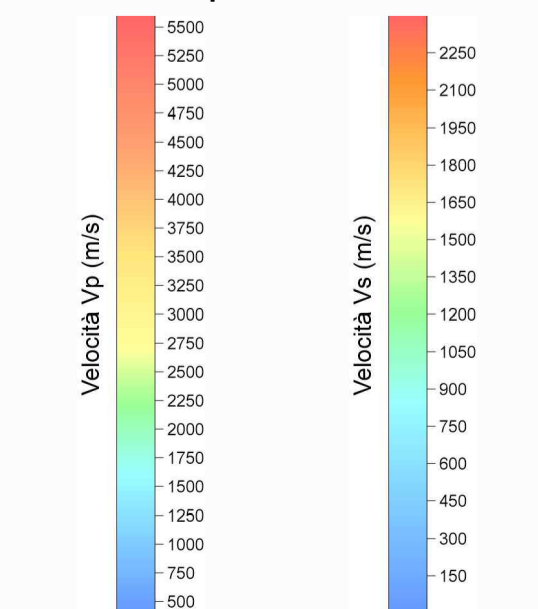
Inquadramento Territoriale Area Indagine



Indagini geofisiche
Zona Gatschwiesen Bosco - Scala 1:5000



Scala colore Vp e Vs dei Profili Sismici



COMMITTENTE:



PROGETTAZIONE:



INFRASTRUTTURE FERROVIARIE STRATEGICHE DEFINITE DALLA LEGGE OBIETTIVO N. 443/01 e s.m.i

U.O. GEOLOGIA, GESTIONE TERRE E BONIFICHE

PROGETTO DEFINITIVO

ASSE FERROVIARIO MONACO - VERONA

ACCESSO SUD ALLA GALLERIA DI BASE DEL BRENNERO
QUADRUPPLICAMENTO DELLA LINEA FORTEZZA - VERONA

LOTTO 1: FORTEZZA - PONTE GARDENA

GEOLOGIA ED IDROGEOLOGIA

INDAGINI GEOFISICHE - Zona Gatschwiesen Bosco

Profili sismici Pes 31, Pes 32, Pes 33

SCALA:
1:1000

COMMESSA LOTTO FASE ENTE TIPO DOC. OPERA/DISCIPLINA PROGR. REV.

Rev.	Descrizione	Redatto	Data	Verificato	Data	Approvato	Data	Aut. Verificato / Data
A	Emissione per ottenimento prescrizioni	D. Roverelli	Mar 2018	S. Roggi	Mar 2018	C. Mazzocchi	Mar 2018	F. Marzulli Mar 2018

File: n. Esb.