

# ALLEGATO 4-2

## Mappe Isofoniche

### Tracciato in dismissione

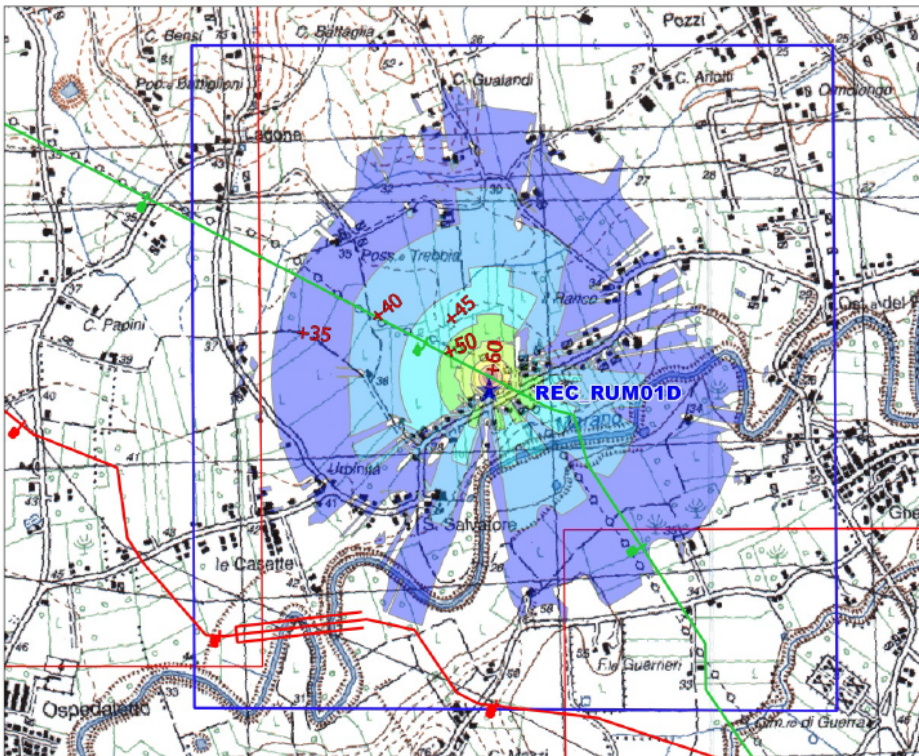
Rifacimento metanodotto Ravenna – Chieti

Tratto Ravenna – Jesi DN 650 (26”), DP 75 bar ed opere connesse

Tecnico Competente in Acustica Legge n. 447 del 26/10/1995 D.G.R. 1408 del 23/11/2004 – Regione Marche	P.I. Daniele Vanzini	Tecnico Competente in Acustica Legge n. 447 del 26/10/1995 D.G.R. 1408 del 23/11/2004 – Regione Marche	Dott. Geol. Marco Principi
--	-------------------------	--	-------------------------------

Rifacimento metanodotto Ravenna – Chieti Tratto Ravenna – Jesi DN 650 (26”), DP 75 bar ed opere connesse

Area considerata: recettore RUM01D



LEGGENDA:

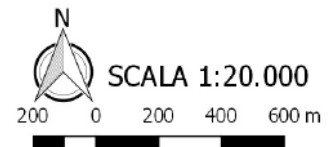
- DOMINIO DISMISSIONE
- DOMINIO PROGETTO
- SITI PROTETTI SIC ZSC ZPS
- ★ Recettori Dismissione
- ★ Recettori Progetto

TRACCIATI:

- TRACCIATO IN PROGETTO
- TRACCIATO IN DISMISSIONE
- TRACCIATO ESISTENTE
- ALLACCIAMENTI NUOVI

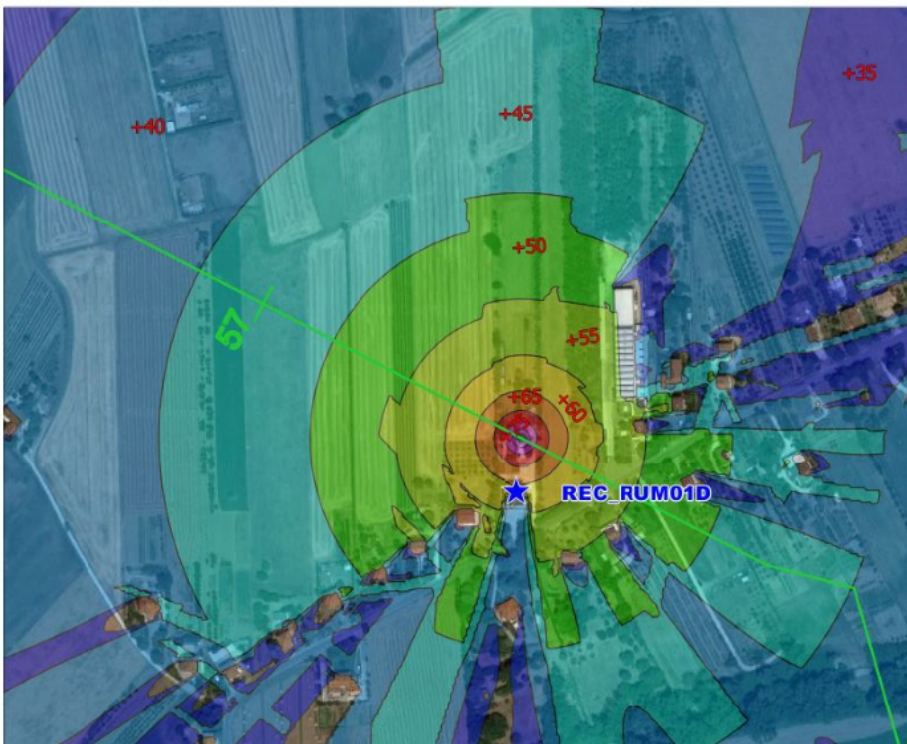
Isofoniche a 4 metri PC

- |   |   |
|---|---|
| <span style="background-color: #ccccff; border: 1px solid black; display: inline-block; width: 15px; height: 10px; margin-right: 5px;"></span> > 35 dB(A) | <span style="background-color: #ffffcc; border: 1px solid black; display: inline-block; width: 15px; height: 10px; margin-right: 5px;"></span> > 60 dB(A) |
| <span style="background-color: #add8e6; border: 1px solid black; display: inline-block; width: 15px; height: 10px; margin-right: 5px;"></span> > 40 dB(A) | <span style="background-color: #ffcc99; border: 1px solid black; display: inline-block; width: 15px; height: 10px; margin-right: 5px;"></span> > 65 dB(A) |
| <span style="background-color: #7fffd4; border: 1px solid black; display: inline-block; width: 15px; height: 10px; margin-right: 5px;"></span> > 45 dB(A) | <span style="background-color: #ff9999; border: 1px solid black; display: inline-block; width: 15px; height: 10px; margin-right: 5px;"></span> > 70 dB(A) |
| <span style="background-color: #90ee90; border: 1px solid black; display: inline-block; width: 15px; height: 10px; margin-right: 5px;"></span> > 50 dB(A) | <span style="background-color: #ff66ff; border: 1px solid black; display: inline-block; width: 15px; height: 10px; margin-right: 5px;"></span> > 75 dB(A) |
| <span style="background-color: #90ee90; border: 1px solid black; display: inline-block; width: 15px; height: 10px; margin-right: 5px;"></span> > 55 dB(A) | <span style="background-color: #ff66ff; border: 1px solid black; display: inline-block; width: 15px; height: 10px; margin-right: 5px;"></span> > 80 dB(A) |



Rifacimento metanodotto Ravenna – Chieti Tratto Ravenna – Jesi DN 650 (26”), DP 75 bar ed opere connesse

Area considerata: recettore RUM01D



LEGGENDA:

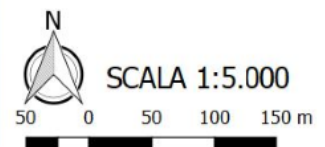
- DOMINIO DISMISSIONE
- DOMINIO PROGETTO
- SITI PROTETTI SIC ZSC ZPS
- ★ Recettori Dismissione
- ★ Recettori Progetto

TRACCIATI:

- TRACCIATO IN PROGETTO
- TRACCIATO IN DISMISSIONE
- TRACCIATO ESISTENTE
- ALLACCIAMENTI NUOVI

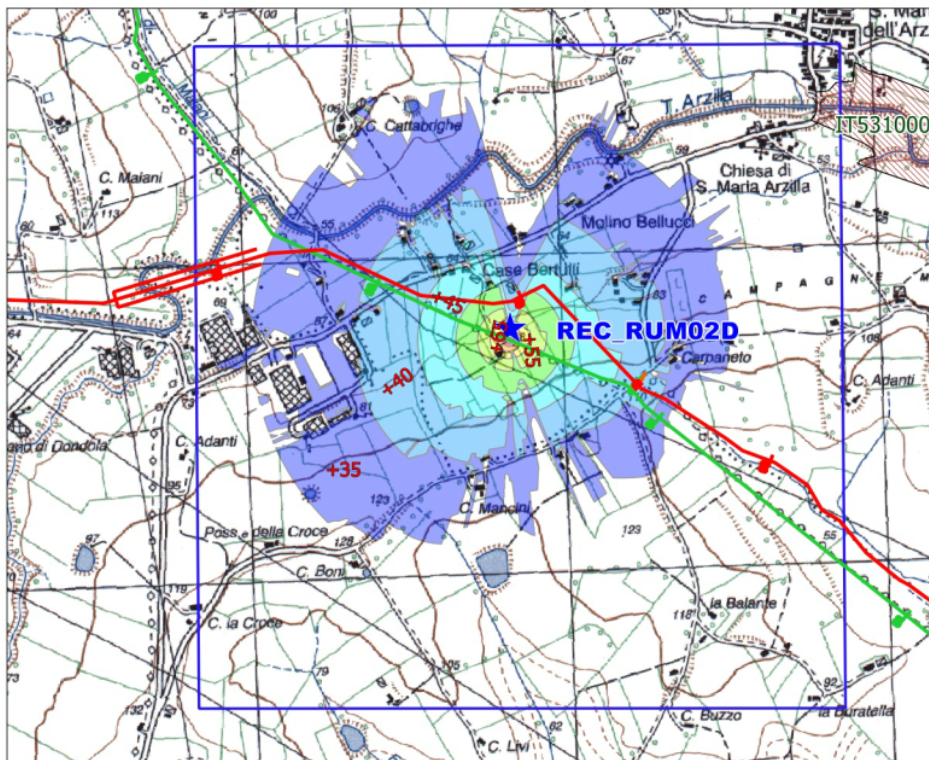
Isofoniche a 4 metri PC

- |   |   |
|---|---|
| <span style="background-color: #ccccff; border: 1px solid black; display: inline-block; width: 15px; height: 10px; margin-right: 5px;"></span> > 35 dB(A) | <span style="background-color: #ffffcc; border: 1px solid black; display: inline-block; width: 15px; height: 10px; margin-right: 5px;"></span> > 60 dB(A) |
| <span style="background-color: #add8e6; border: 1px solid black; display: inline-block; width: 15px; height: 10px; margin-right: 5px;"></span> > 40 dB(A) | <span style="background-color: #ffcc99; border: 1px solid black; display: inline-block; width: 15px; height: 10px; margin-right: 5px;"></span> > 65 dB(A) |
| <span style="background-color: #7fffd4; border: 1px solid black; display: inline-block; width: 15px; height: 10px; margin-right: 5px;"></span> > 45 dB(A) | <span style="background-color: #ff9999; border: 1px solid black; display: inline-block; width: 15px; height: 10px; margin-right: 5px;"></span> > 70 dB(A) |
| <span style="background-color: #90ee90; border: 1px solid black; display: inline-block; width: 15px; height: 10px; margin-right: 5px;"></span> > 50 dB(A) | <span style="background-color: #ff66ff; border: 1px solid black; display: inline-block; width: 15px; height: 10px; margin-right: 5px;"></span> > 75 dB(A) |
| <span style="background-color: #90ee90; border: 1px solid black; display: inline-block; width: 15px; height: 10px; margin-right: 5px;"></span> > 55 dB(A) | <span style="background-color: #ff66ff; border: 1px solid black; display: inline-block; width: 15px; height: 10px; margin-right: 5px;"></span> > 80 dB(A) |



Rifacimento metanodotto Ravenna – Chieti Tratto Ravenna – Jesi DN 650 (26"), DP 75 bar ed opere connesse

Area considerata: recettore RUM02D



LEGENDA:

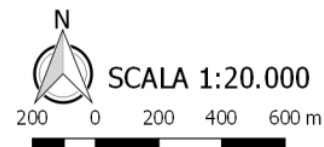
- DOMINIO DISMISSIONE
- DOMINIO PROGETTO
- SITI PROTETTI SIC ZSC ZPS
- ★ Recettori Dismissione
- ★ Recettori Progetto

TRACCIATI:

- TRACCIATO IN PROGETTO
- TRACCIATO IN DISMISSIONE
- TRACCIATO ESISTENTE
- ALLACCIAMENTI NUOVI

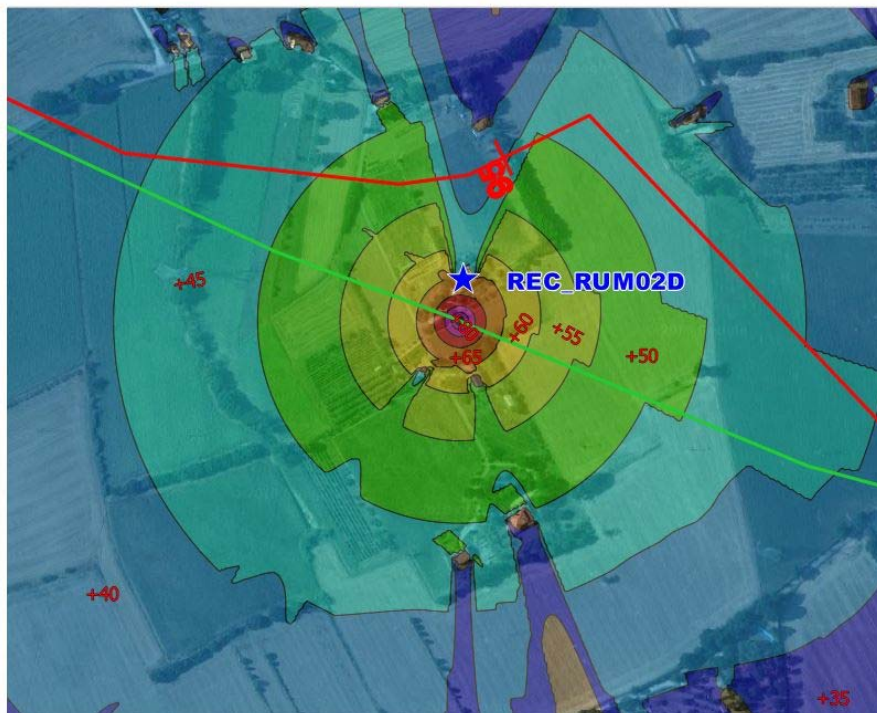
Isofoniche a 4 metri PC

- |   |   |
|---|---|
| <span style="background-color: #ccccff; border: 1px solid black; display: inline-block; width: 15px; height: 10px; margin-right: 5px;"></span> > 35 dB(A) | <span style="background-color: #ffffcc; border: 1px solid black; display: inline-block; width: 15px; height: 10px; margin-right: 5px;"></span> > 60 dB(A) |
| <span style="background-color: #add8e6; border: 1px solid black; display: inline-block; width: 15px; height: 10px; margin-right: 5px;"></span> > 40 dB(A) | <span style="background-color: #ffcc99; border: 1px solid black; display: inline-block; width: 15px; height: 10px; margin-right: 5px;"></span> > 65 dB(A) |
| <span style="background-color: #7fffd4; border: 1px solid black; display: inline-block; width: 15px; height: 10px; margin-right: 5px;"></span> > 45 dB(A) | <span style="background-color: #ff9966; border: 1px solid black; display: inline-block; width: 15px; height: 10px; margin-right: 5px;"></span> > 70 dB(A) |
| <span style="background-color: #90ee90; border: 1px solid black; display: inline-block; width: 15px; height: 10px; margin-right: 5px;"></span> > 50 dB(A) | <span style="background-color: #ff66ff; border: 1px solid black; display: inline-block; width: 15px; height: 10px; margin-right: 5px;"></span> > 75 dB(A) |
| <span style="background-color: #90ee90; border: 1px solid black; display: inline-block; width: 15px; height: 10px; margin-right: 5px;"></span> > 55 dB(A) | <span style="background-color: #ff66ff; border: 1px solid black; display: inline-block; width: 15px; height: 10px; margin-right: 5px;"></span> > 80 dB(A) |



Rifacimento metanodotto Ravenna – Chieti Tratto Ravenna – Jesi DN 650 (26"), DP 75 bar ed opere connesse

Area considerata: recettore RUM02D



LEGENDA:

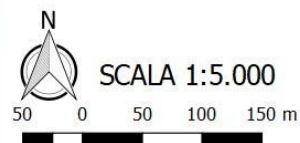
- DOMINIO DISMISSIONE
- DOMINIO PROGETTO
- SITI PROTETTI SIC ZSC ZPS
- ★ Recettori Dismissione
- ★ Recettori Progetto

TRACCIATI:

- TRACCIATO IN PROGETTO
- TRACCIATO IN DISMISSIONE
- TRACCIATO ESISTENTE
- ALLACCIAMENTI NUOVI

Isofoniche a 4 metri PC

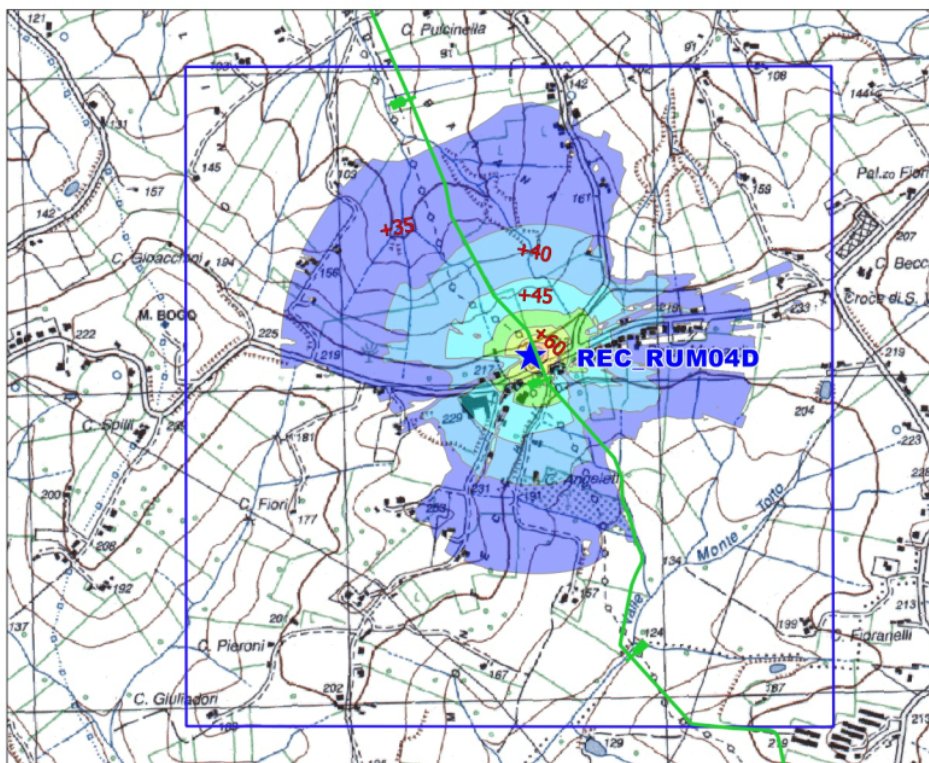
- |   |   |
|---|---|
| <span style="background-color: #ccccff; border: 1px solid black; display: inline-block; width: 15px; height: 10px; margin-right: 5px;"></span> > 35 dB(A) | <span style="background-color: #ffffcc; border: 1px solid black; display: inline-block; width: 15px; height: 10px; margin-right: 5px;"></span> > 60 dB(A) |
| <span style="background-color: #add8e6; border: 1px solid black; display: inline-block; width: 15px; height: 10px; margin-right: 5px;"></span> > 40 dB(A) | <span style="background-color: #ffcc99; border: 1px solid black; display: inline-block; width: 15px; height: 10px; margin-right: 5px;"></span> > 65 dB(A) |
| <span style="background-color: #7fffd4; border: 1px solid black; display: inline-block; width: 15px; height: 10px; margin-right: 5px;"></span> > 45 dB(A) | <span style="background-color: #ff9966; border: 1px solid black; display: inline-block; width: 15px; height: 10px; margin-right: 5px;"></span> > 70 dB(A) |
| <span style="background-color: #90ee90; border: 1px solid black; display: inline-block; width: 15px; height: 10px; margin-right: 5px;"></span> > 50 dB(A) | <span style="background-color: #ff66ff; border: 1px solid black; display: inline-block; width: 15px; height: 10px; margin-right: 5px;"></span> > 75 dB(A) |
| <span style="background-color: #90ee90; border: 1px solid black; display: inline-block; width: 15px; height: 10px; margin-right: 5px;"></span> > 55 dB(A) | <span style="background-color: #ff66ff; border: 1px solid black; display: inline-block; width: 15px; height: 10px; margin-right: 5px;"></span> > 80 dB(A) |





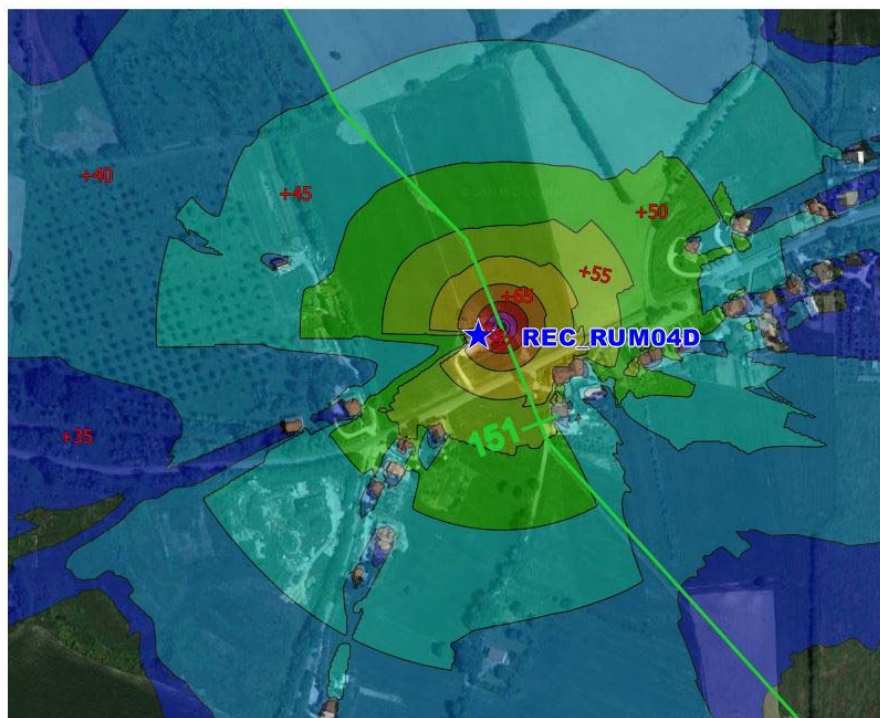
Rifacimento metanodotto Ravenna – Chieti Tratto Ravenna – Jesi DN 650 (26”), DP 75 bar ed opere connesse

Area considerata: recettore RUM04D



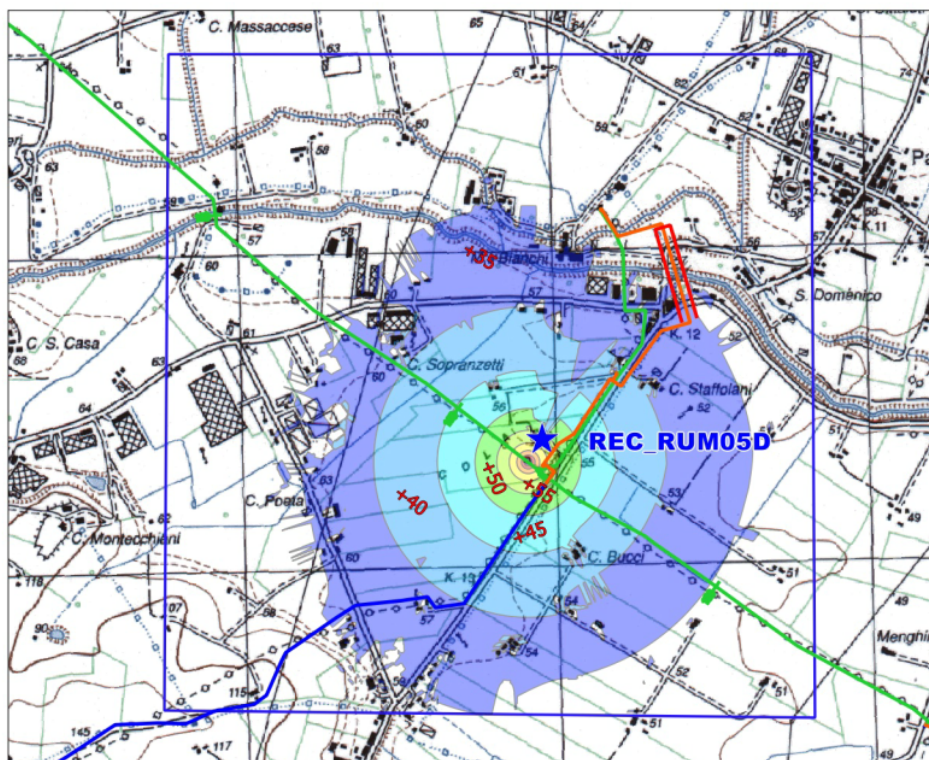
Rifacimento metanodotto Ravenna – Chieti Tratto Ravenna – Jesi DN 650 (26”), DP 75 bar ed opere connesse

Area considerata: recettore RUM04D



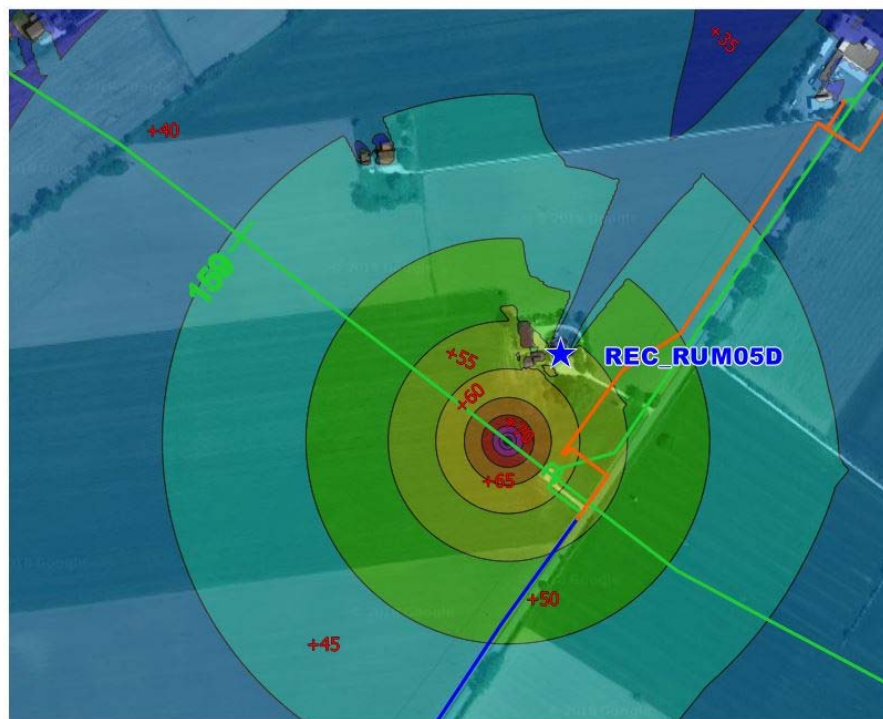
Rifacimento metanodotto Ravenna – Chieti Tratto Ravenna – Jesi DN 650 (26”), DP 75 bar ed opere connesse

Area considerata: recettore RUM05D



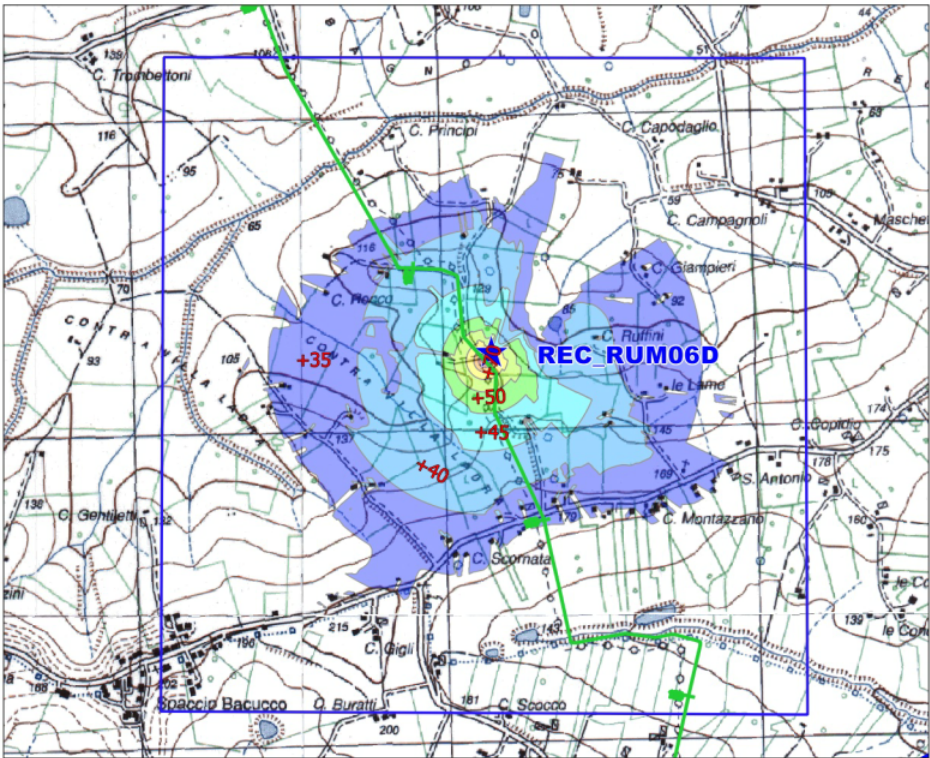
Rifacimento metanodotto Ravenna – Chieti Tratto Ravenna – Jesi DN 650 (26”), DP 75 bar ed opere connesse

Area considerata: recettore RUM05D



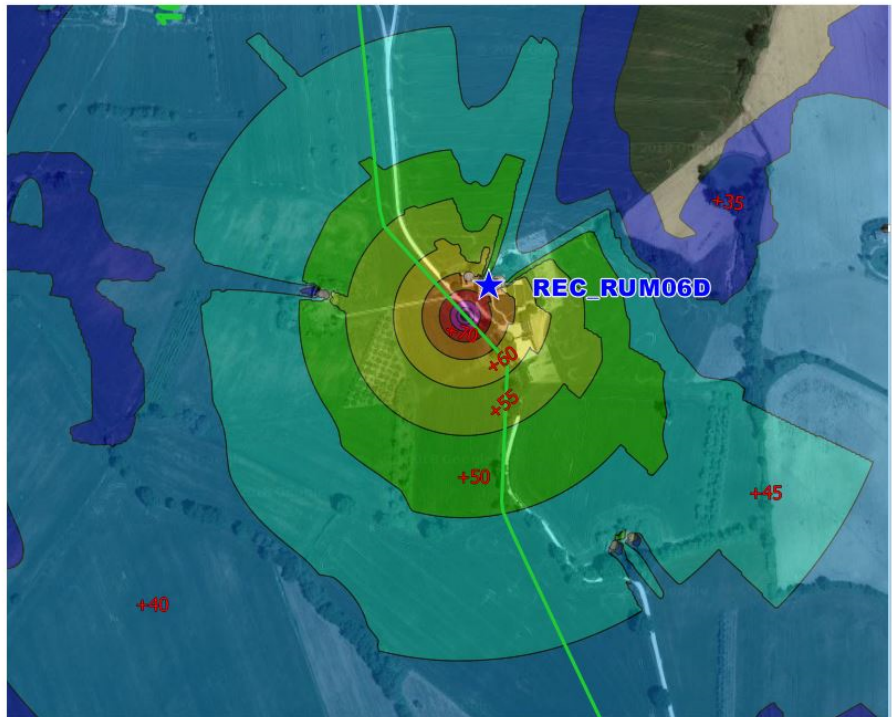
Rifacimento metanodotto Ravenna – Chieti Tratto Ravenna – Jesi DN 650 (26”), DP 75 bar ed opere connesse

Area considerata: recettore RUM06D



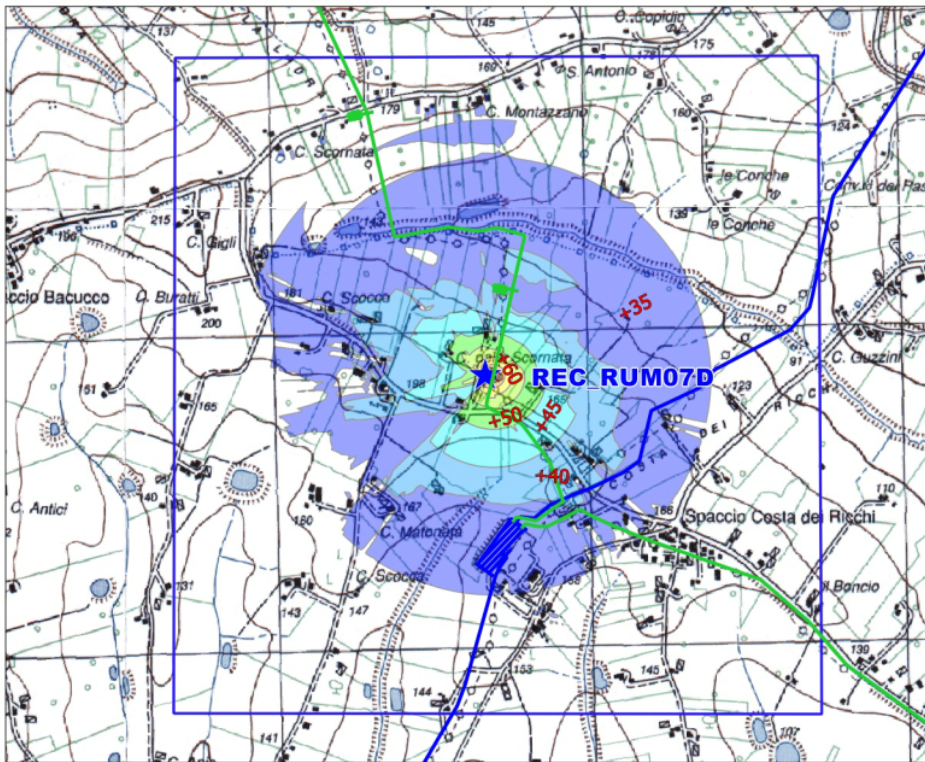
Rifacimento metanodotto Ravenna – Chieti Tratto Ravenna – Jesi DN 650 (26”), DP 75 bar ed opere connesse

Area considerata: recettore RUM06D



Rifacimento metanodotto Ravenna – Chieti Tratto Ravenna – Jesi DN 650 (26''), DP 75 bar ed opere connesse

Area considerata: recettore RUM07D



LEGENDA:

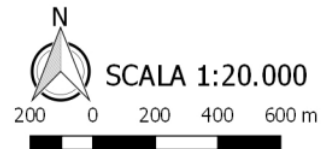
- DOMINIO DISMISSIONE
- DOMINIO PROGETTO
- SITI PROTETTI SIC ZSC ZPS
- ★ Recettori Dismissione
- ★ Recettori Progetto

TRACCIATI:

- TRACCIATO IN PROGETTO
- TRACCIATO IN DISMISSIONE
- TRACCIATO ESISTENTE
- ALLACCIAMENTI NUOVI

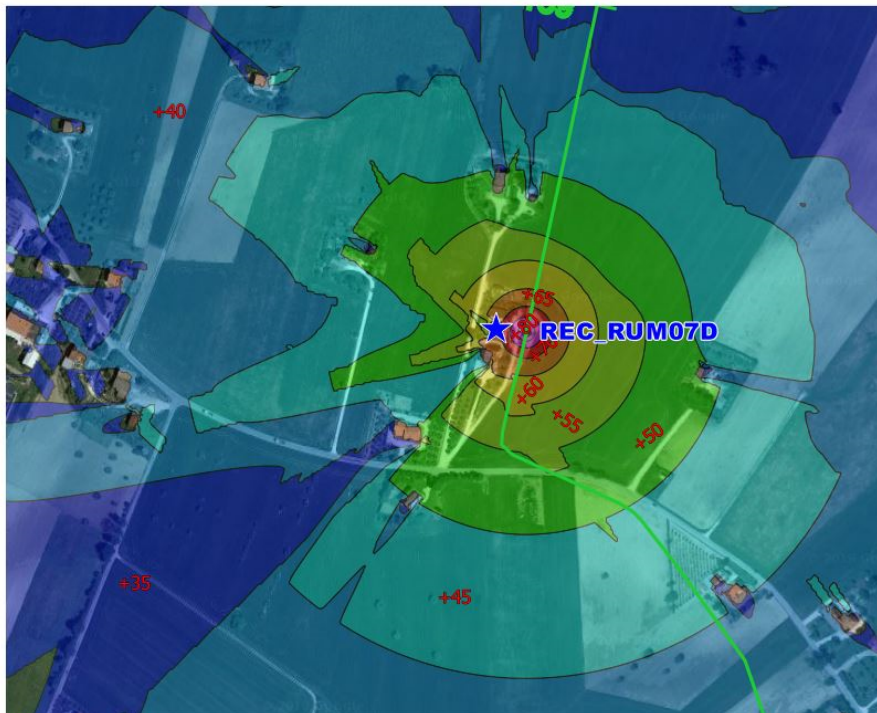
Isofoniche a 4 metri PC

- |   |   |
|---|---|
| <span style="background-color: #ccccff; border: 1px solid black; display: inline-block; width: 15px; height: 10px; margin-right: 5px;"></span> > 35 dB(A) | <span style="background-color: #ffffcc; border: 1px solid black; display: inline-block; width: 15px; height: 10px; margin-right: 5px;"></span> > 60 dB(A) |
| <span style="background-color: #add8e6; border: 1px solid black; display: inline-block; width: 15px; height: 10px; margin-right: 5px;"></span> > 40 dB(A) | <span style="background-color: #ffcc99; border: 1px solid black; display: inline-block; width: 15px; height: 10px; margin-right: 5px;"></span> > 65 dB(A) |
| <span style="background-color: #90ee90; border: 1px solid black; display: inline-block; width: 15px; height: 10px; margin-right: 5px;"></span> > 45 dB(A) | <span style="background-color: #ff9966; border: 1px solid black; display: inline-block; width: 15px; height: 10px; margin-right: 5px;"></span> > 70 dB(A) |
| <span style="background-color: #90ee90; border: 1px solid black; display: inline-block; width: 15px; height: 10px; margin-right: 5px;"></span> > 50 dB(A) | <span style="background-color: #ff6699; border: 1px solid black; display: inline-block; width: 15px; height: 10px; margin-right: 5px;"></span> > 75 dB(A) |
| <span style="background-color: #90ee90; border: 1px solid black; display: inline-block; width: 15px; height: 10px; margin-right: 5px;"></span> > 55 dB(A) | <span style="background-color: #ff6699; border: 1px solid black; display: inline-block; width: 15px; height: 10px; margin-right: 5px;"></span> > 80 dB(A) |



Rifacimento metanodotto Ravenna – Chieti Tratto Ravenna – Jesi DN 650 (26''), DP 75 bar ed opere connesse

Area considerata: recettore RUM07D



LEGENDA:

- DOMINIO DISMISSIONE
- DOMINIO PROGETTO
- SITI PROTETTI SIC ZSC ZPS
- ★ Recettori Dismissione
- ★ Recettori Progetto

TRACCIATI:

- TRACCIATO IN PROGETTO
- TRACCIATO IN DISMISSIONE
- TRACCIATO ESISTENTE
- ALLACCIAMENTI NUOVI

Isofoniche a 4 metri PC

- |   |   |
|---|---|
| <span style="background-color: #ccccff; border: 1px solid black; display: inline-block; width: 15px; height: 10px; margin-right: 5px;"></span> > 35 dB(A) | <span style="background-color: #ffffcc; border: 1px solid black; display: inline-block; width: 15px; height: 10px; margin-right: 5px;"></span> > 60 dB(A) |
| <span style="background-color: #add8e6; border: 1px solid black; display: inline-block; width: 15px; height: 10px; margin-right: 5px;"></span> > 40 dB(A) | <span style="background-color: #ffcc99; border: 1px solid black; display: inline-block; width: 15px; height: 10px; margin-right: 5px;"></span> > 65 dB(A) |
| <span style="background-color: #90ee90; border: 1px solid black; display: inline-block; width: 15px; height: 10px; margin-right: 5px;"></span> > 45 dB(A) | <span style="background-color: #ff9966; border: 1px solid black; display: inline-block; width: 15px; height: 10px; margin-right: 5px;"></span> > 70 dB(A) |
| <span style="background-color: #90ee90; border: 1px solid black; display: inline-block; width: 15px; height: 10px; margin-right: 5px;"></span> > 50 dB(A) | <span style="background-color: #ff6699; border: 1px solid black; display: inline-block; width: 15px; height: 10px; margin-right: 5px;"></span> > 75 dB(A) |
| <span style="background-color: #90ee90; border: 1px solid black; display: inline-block; width: 15px; height: 10px; margin-right: 5px;"></span> > 55 dB(A) | <span style="background-color: #ff6699; border: 1px solid black; display: inline-block; width: 15px; height: 10px; margin-right: 5px;"></span> > 80 dB(A) |

