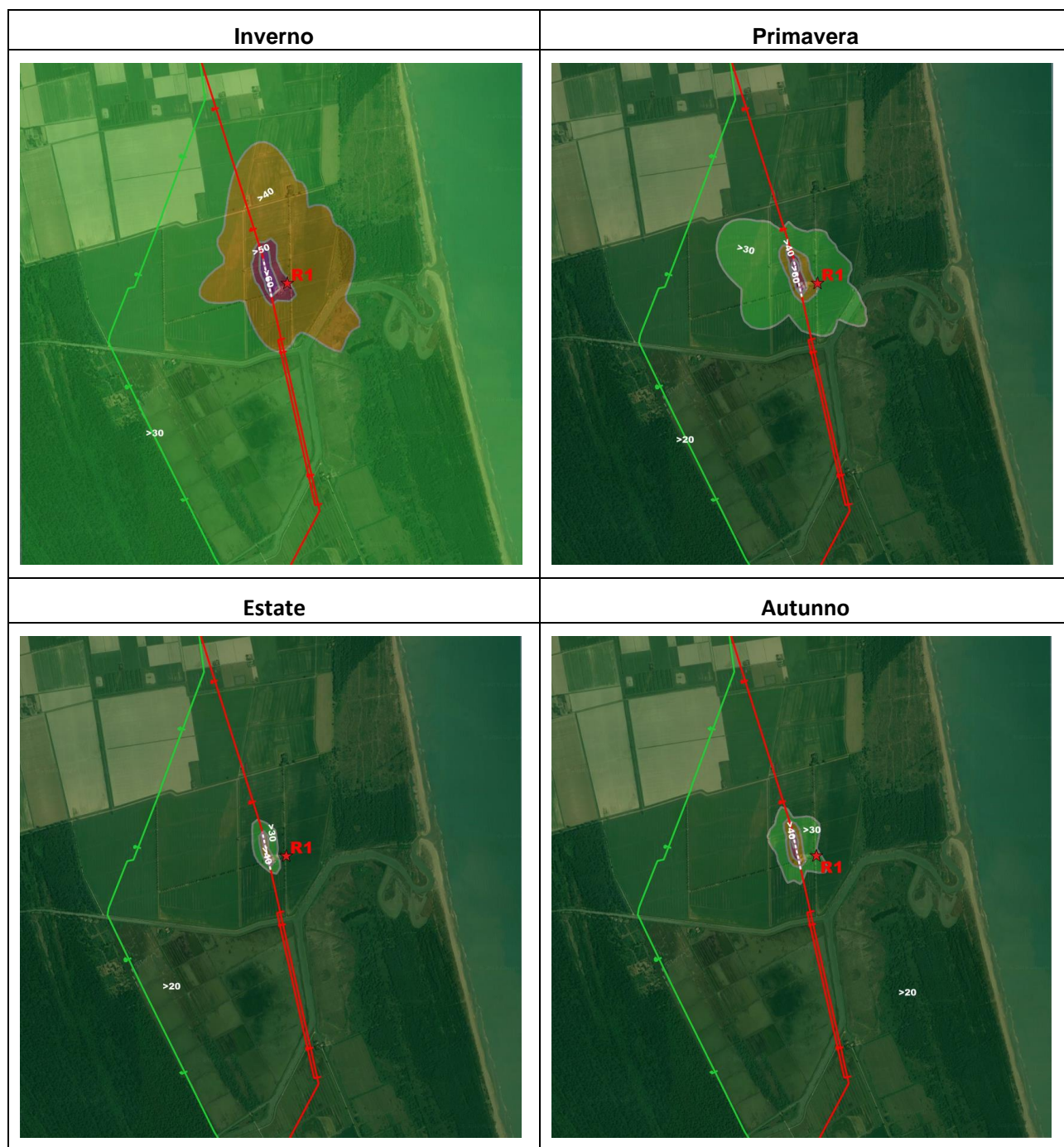


Allegato II

Campi dei massimi stagionali delle concentrazioni
medie giornaliere per le PM₁₀

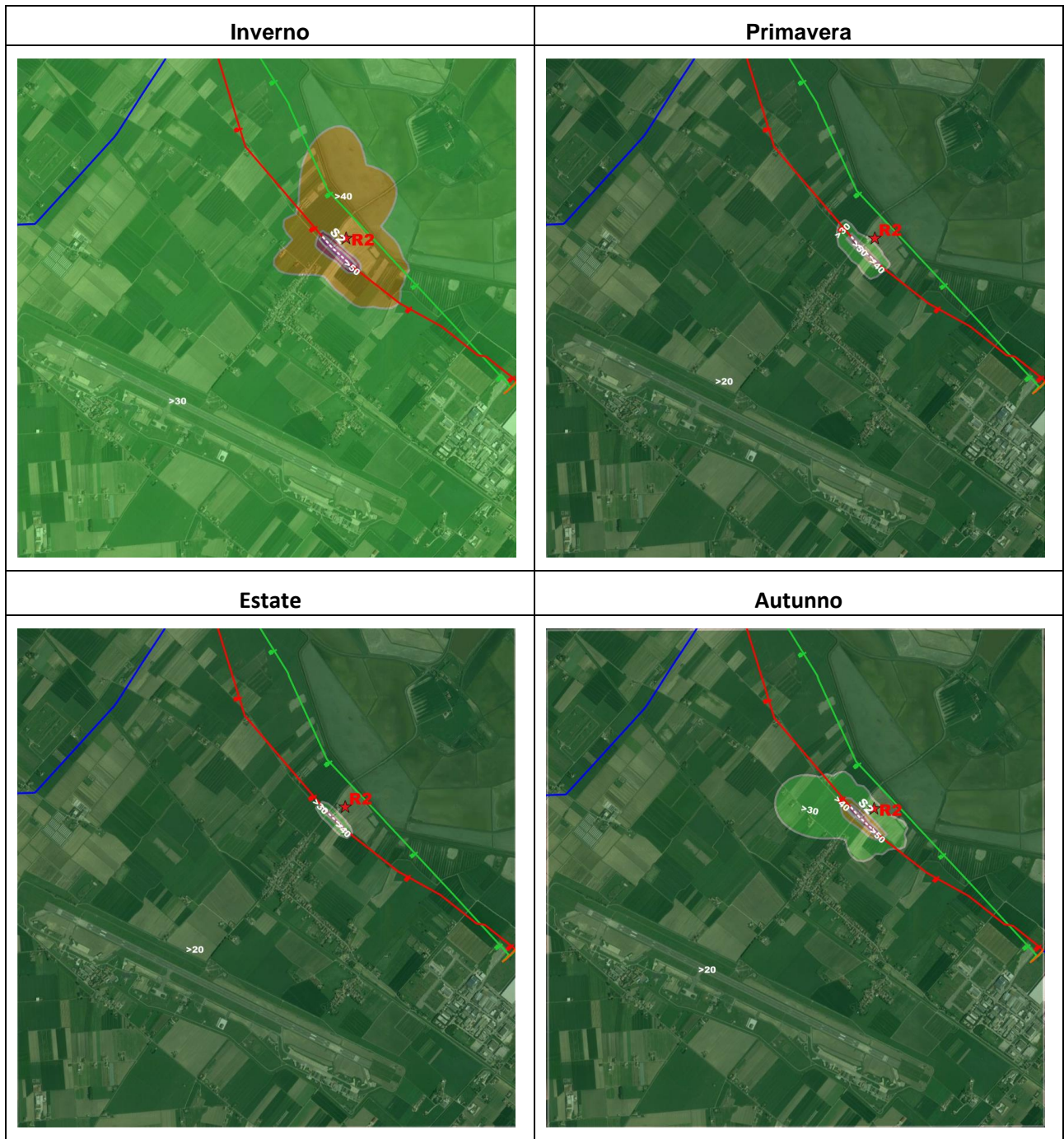
Figura All-1: Massimo stagionale delle concentrazioni giornaliere di PM₁₀ per la sorgente S1



Valori in $\mu\text{g}/\text{Nm}^3$

- >20
- >30
- >40
- >50
- >60

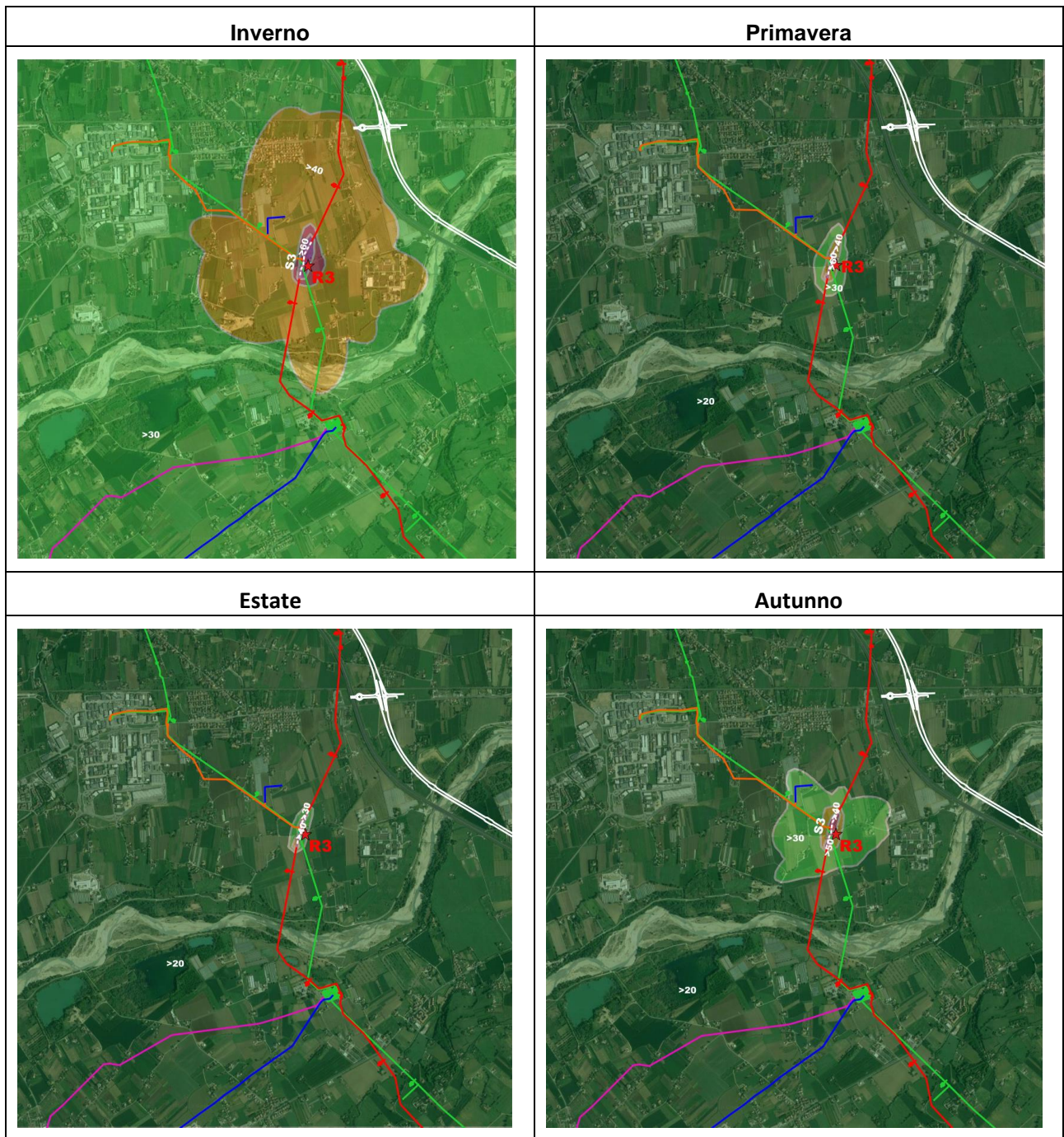
Figura All-1: Massimo stagionale delle concentrazioni giornaliere di PM₁₀ per la sorgente S2



Valori in $\mu\text{g}/\text{Nm}^3$

- >20
- >30
- >40
- >50
- >60

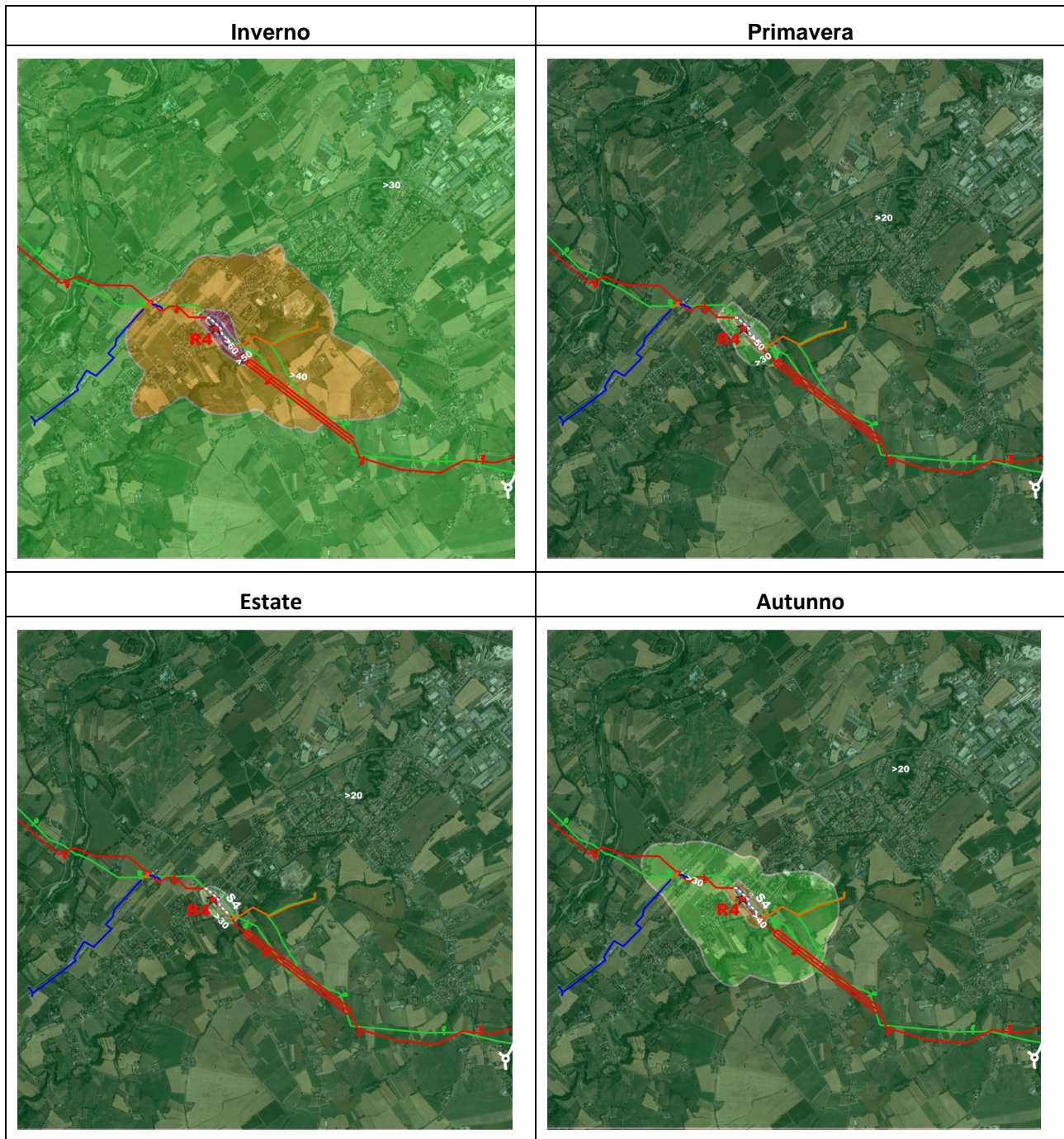
Figura All-1: Massimo stagionale delle concentrazioni giornaliere di PM₁₀ per la sorgente S3



Valori in $\mu\text{g}/\text{Nm}^3$

- >20
- >30
- >40
- >50
- >60

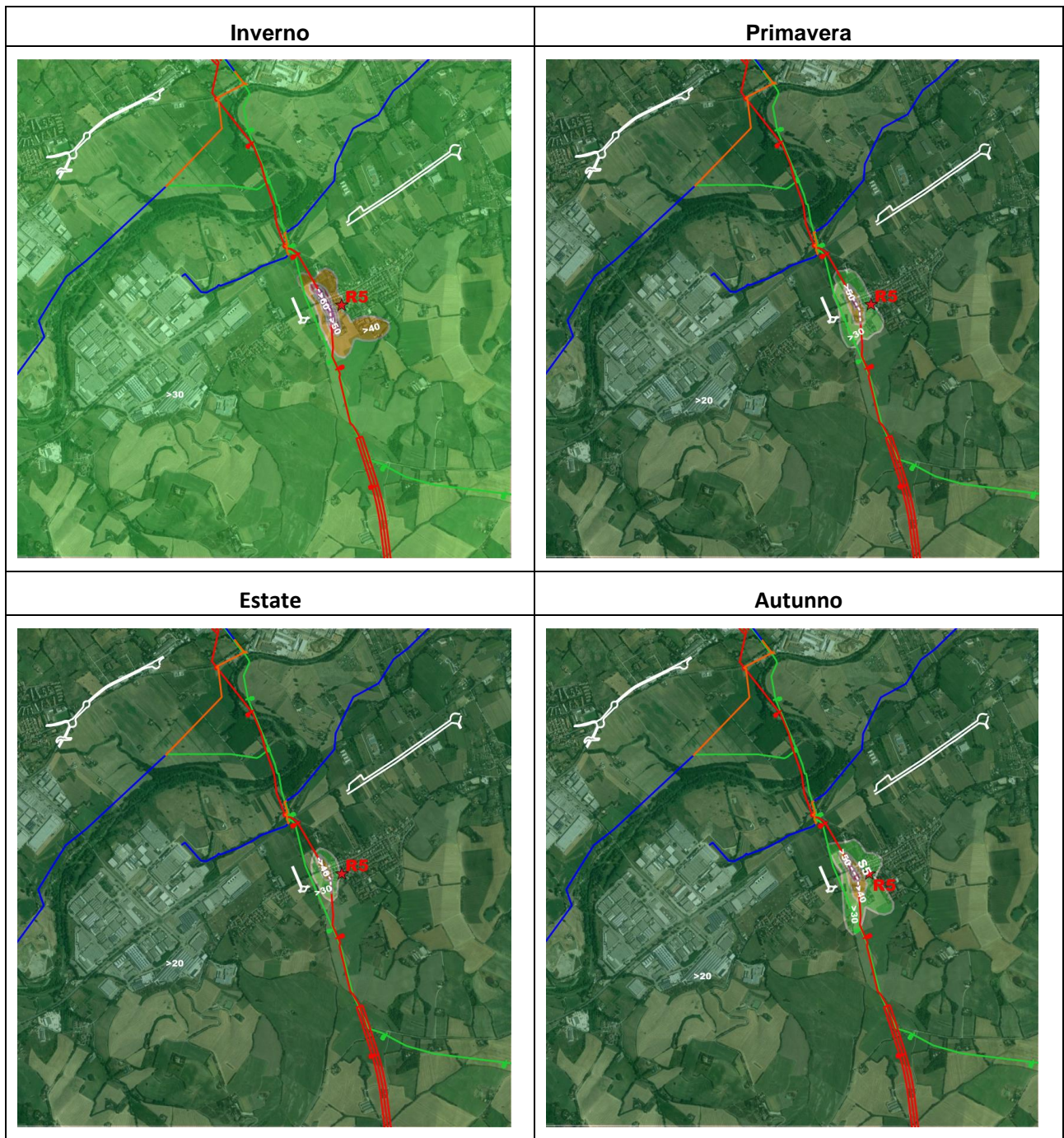
Figura All-1: Massimo stagionale delle concentrazioni giornaliere di PM₁₀ per la sorgente S4



Valori in $\mu\text{g}/\text{Nm}^3$

- >20
- >30
- >40
- >50
- >60

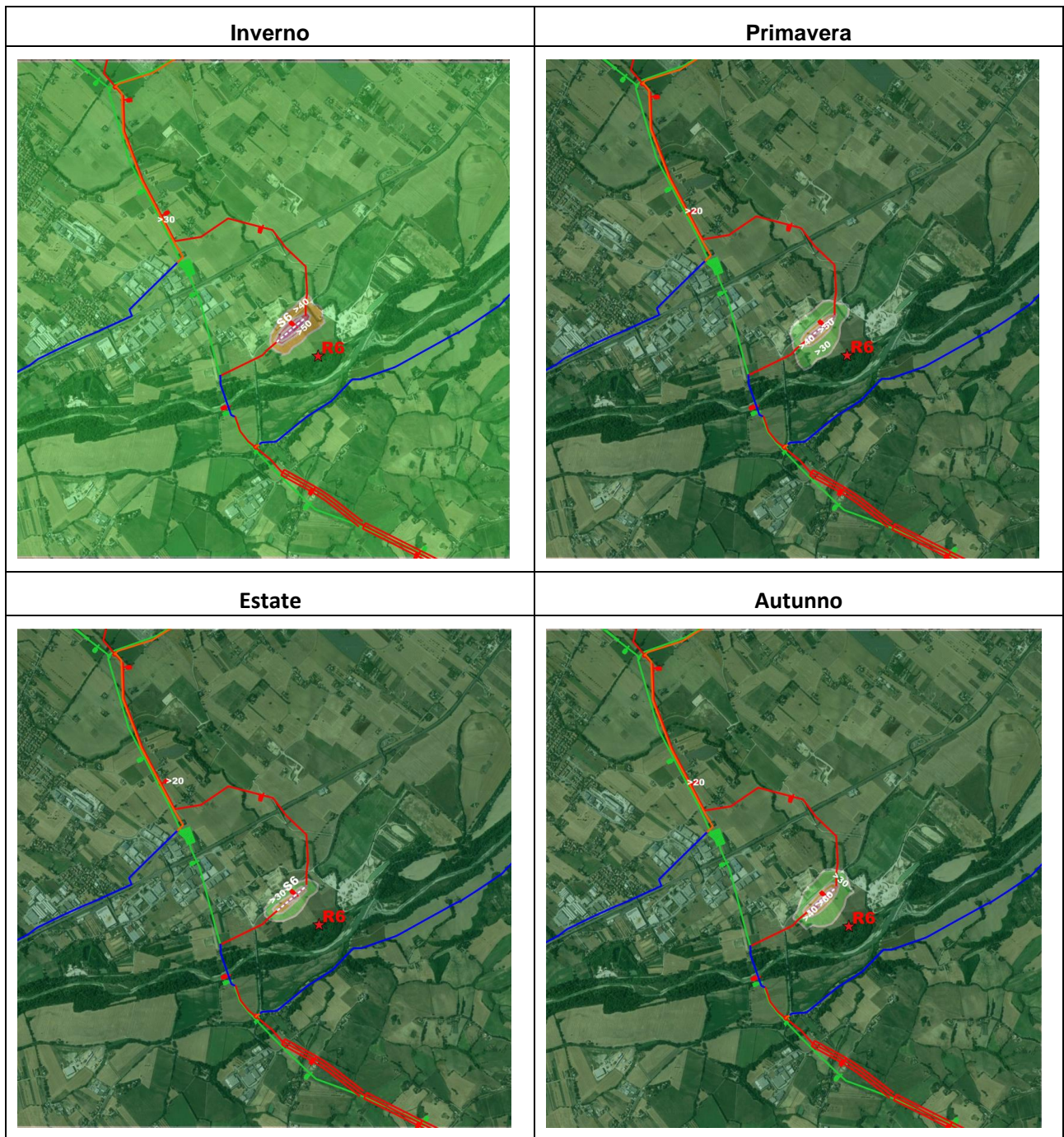
Figura All-1: Massimo stagionale delle concentrazioni giornaliere di PM₁₀ per la sorgente S5



Valori in $\mu\text{g}/\text{Nm}^3$

- >20
- >30
- >40
- >50
- >60

Figura All-1: Massimo stagionale delle concentrazioni giornaliere di PM₁₀ per la sorgente S6



Valori in $\mu\text{g}/\text{Nm}^3$






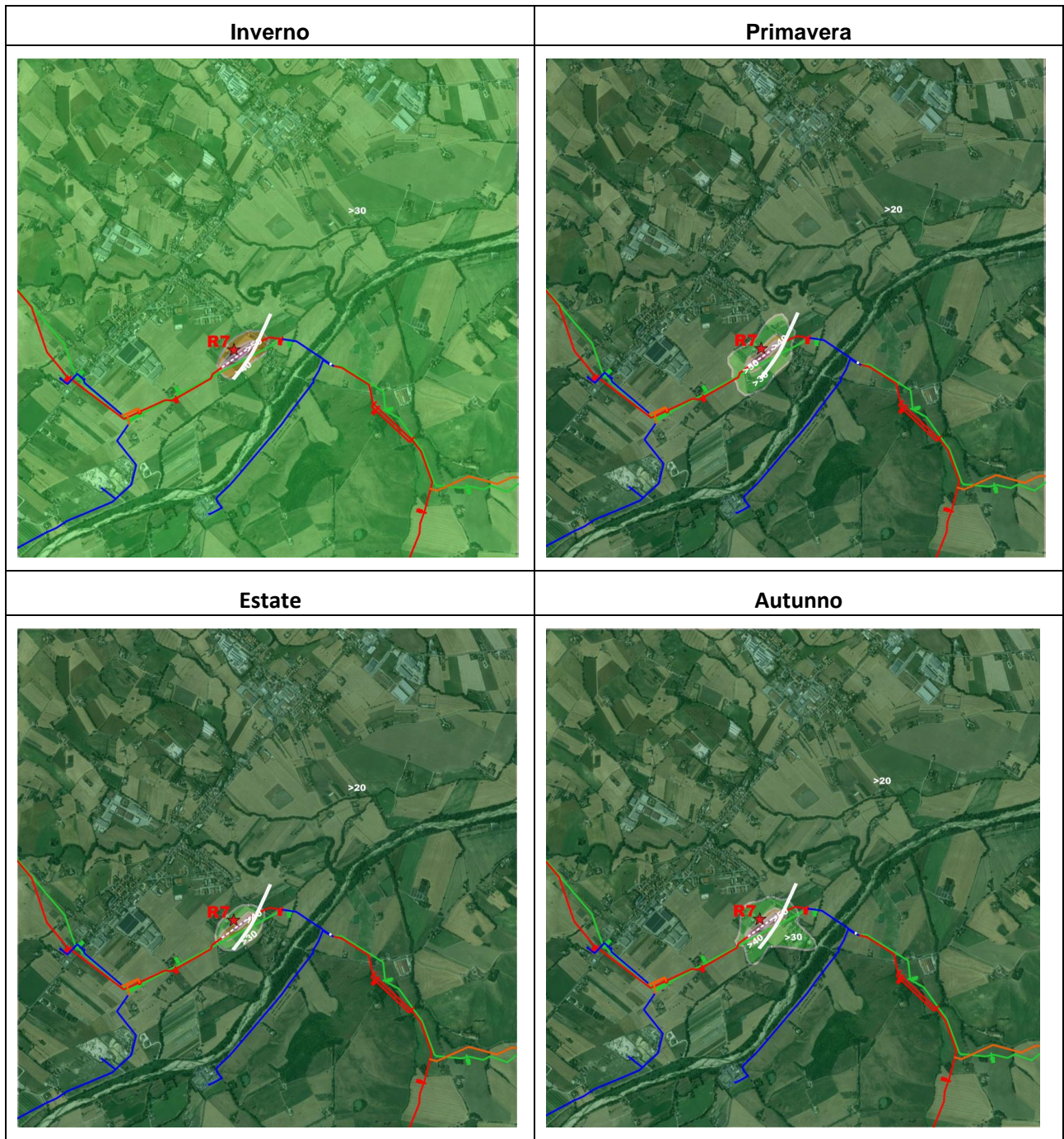
-  >20
-  >30
-  >40
-  >50
-  >60

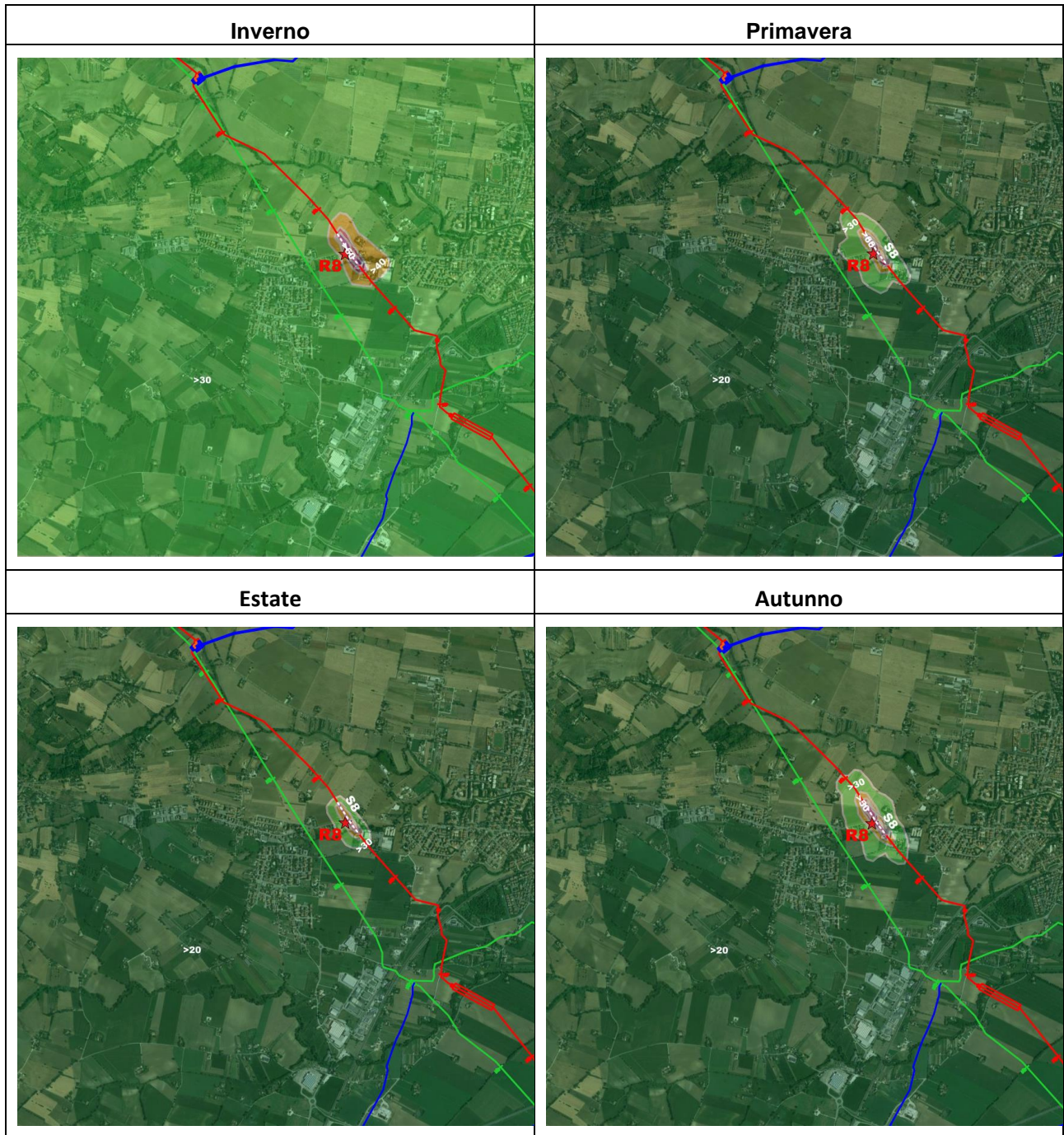
Figura All-1: Massimo stagionale delle concentrazioni giornaliere di PM₁₀ per la sorgente S7



Valori in $\mu\text{g}/\text{Nm}^3$

- >20
- >30
- >40
- >50
- >60

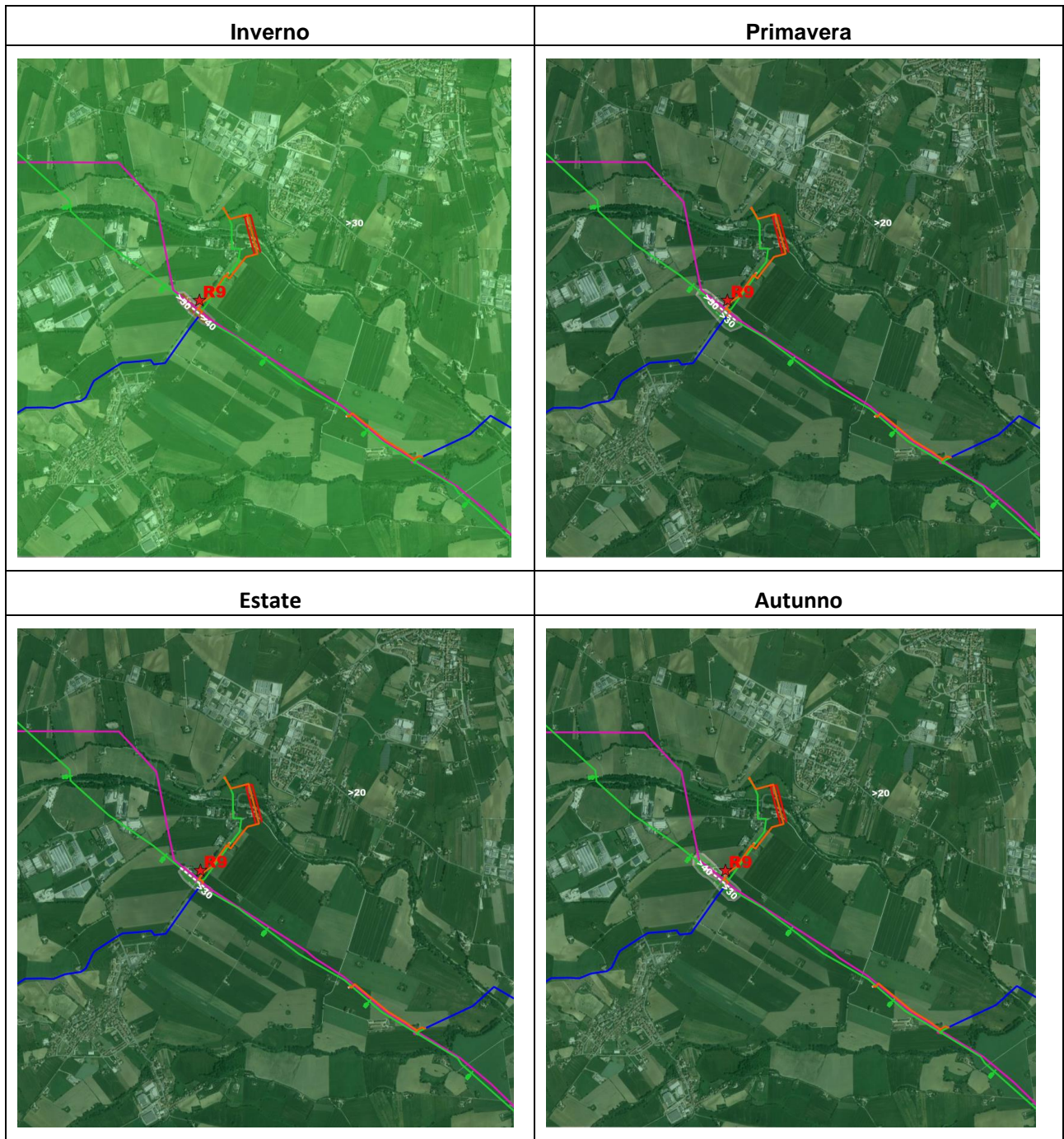
Figura All-1: Massimo stagionale delle concentrazioni giornaliere di PM₁₀ per la sorgente S8



Valori in $\mu\text{g}/\text{Nm}^3$

- >20
- >30
- >40
- >50
- >60

Figura All-1: Massimo stagionale delle concentrazioni giornaliere di PM₁₀ per la sorgente S9



Valori in µg/Nm³

- >20
- >30
- >40
- >50
- >60