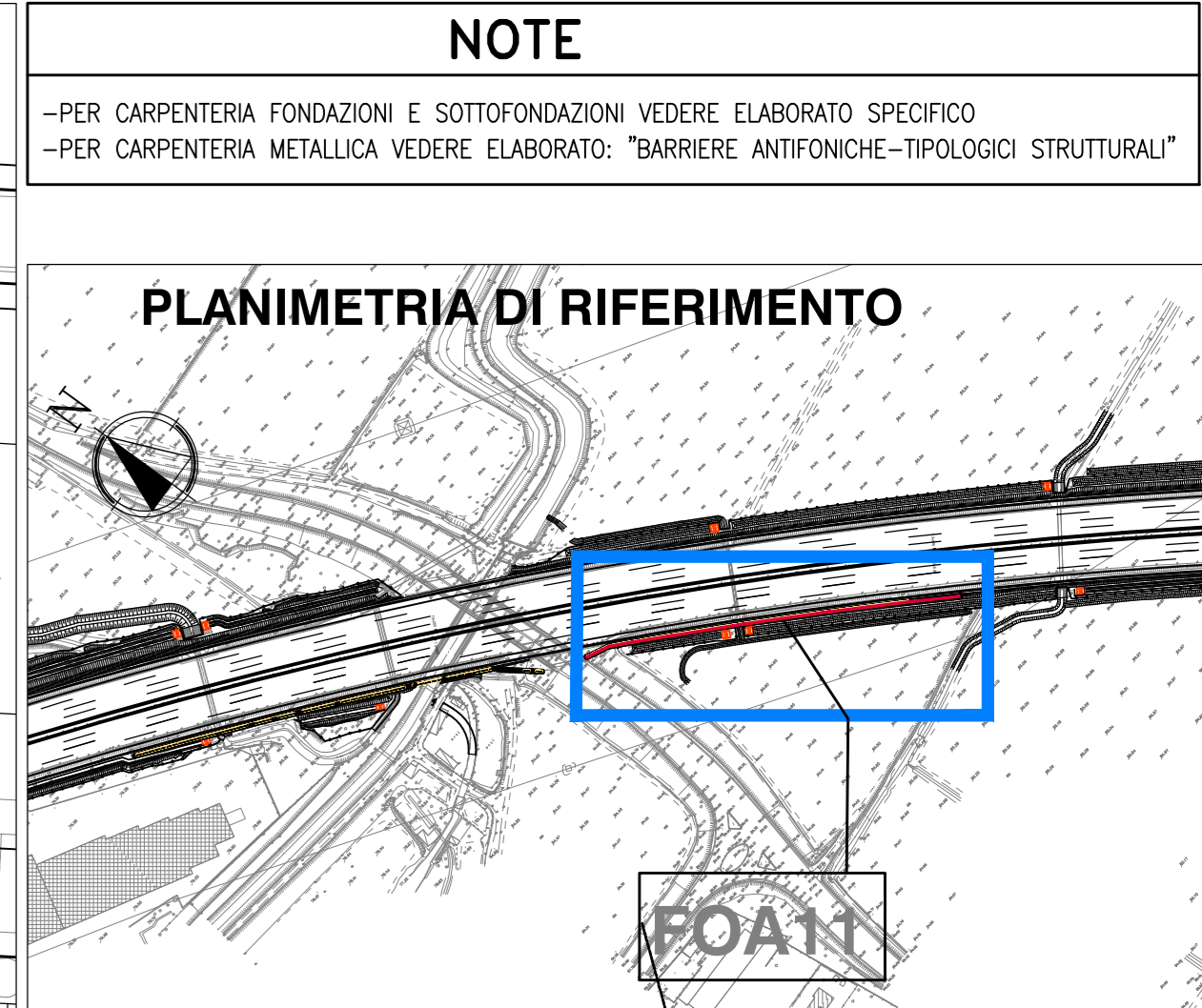
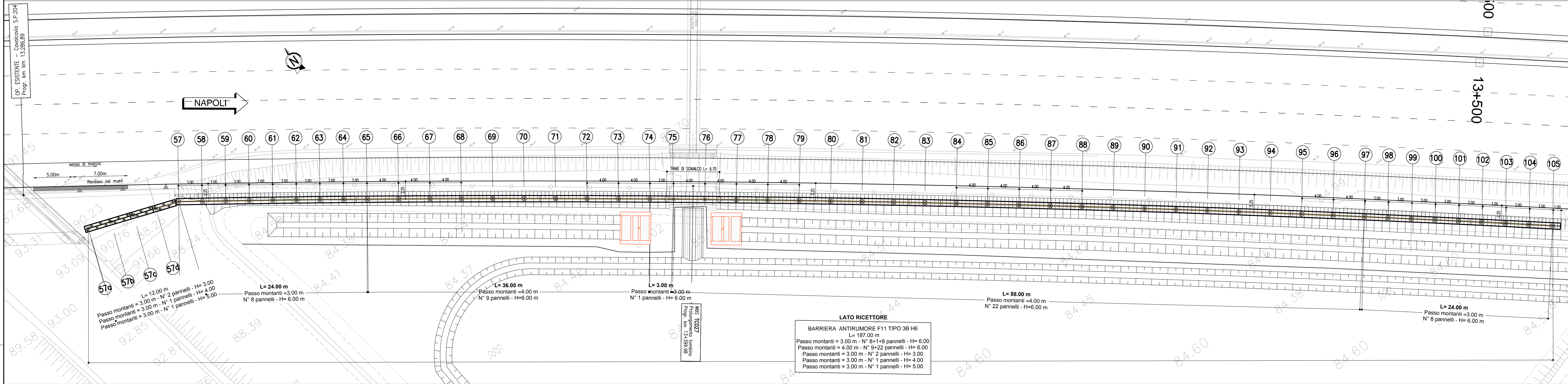


PLANIMETRIA DI PROGETTO

1:200

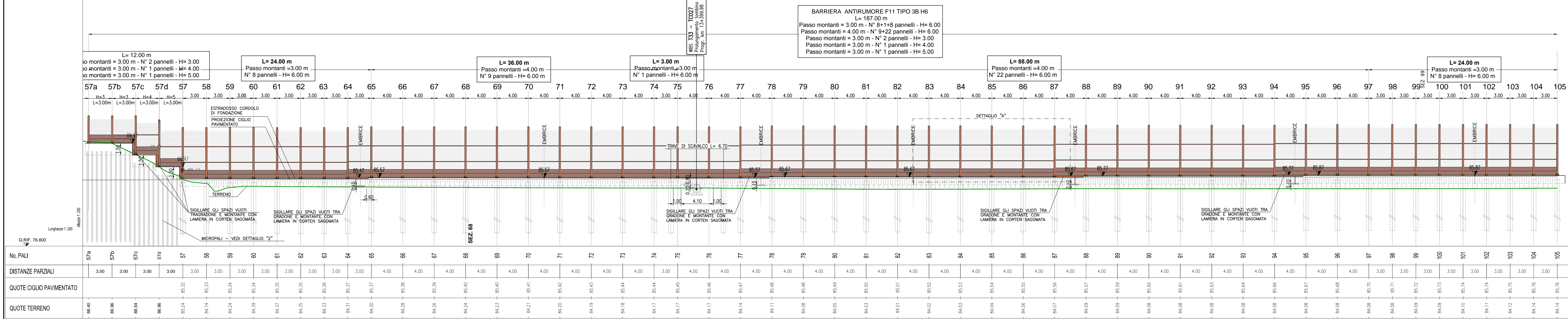


NOTE

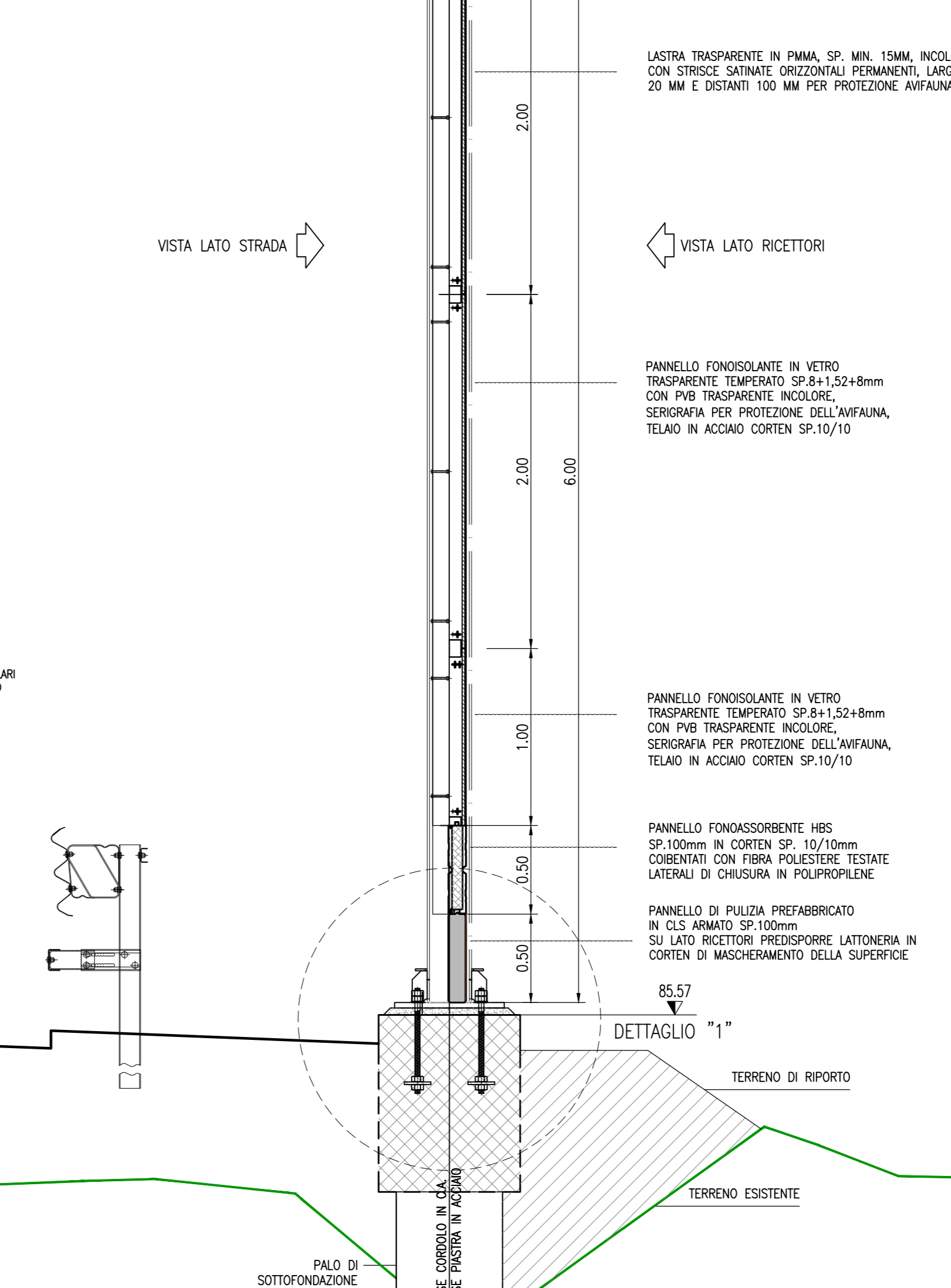
-PER CARPENTERIA FONDAZIONI E SOTTOFONDAZIONI VEDERE ELABORATO SPECIFICO
-PER CARPENTERIA METALLICA VEDERE ELABORATO: "BARRIERE ANTIFONICHE-TIPOLOGICI STRUTTURALI"

SEZIONE LONGITUDINALE - VISTA DA LATO RICETTORE

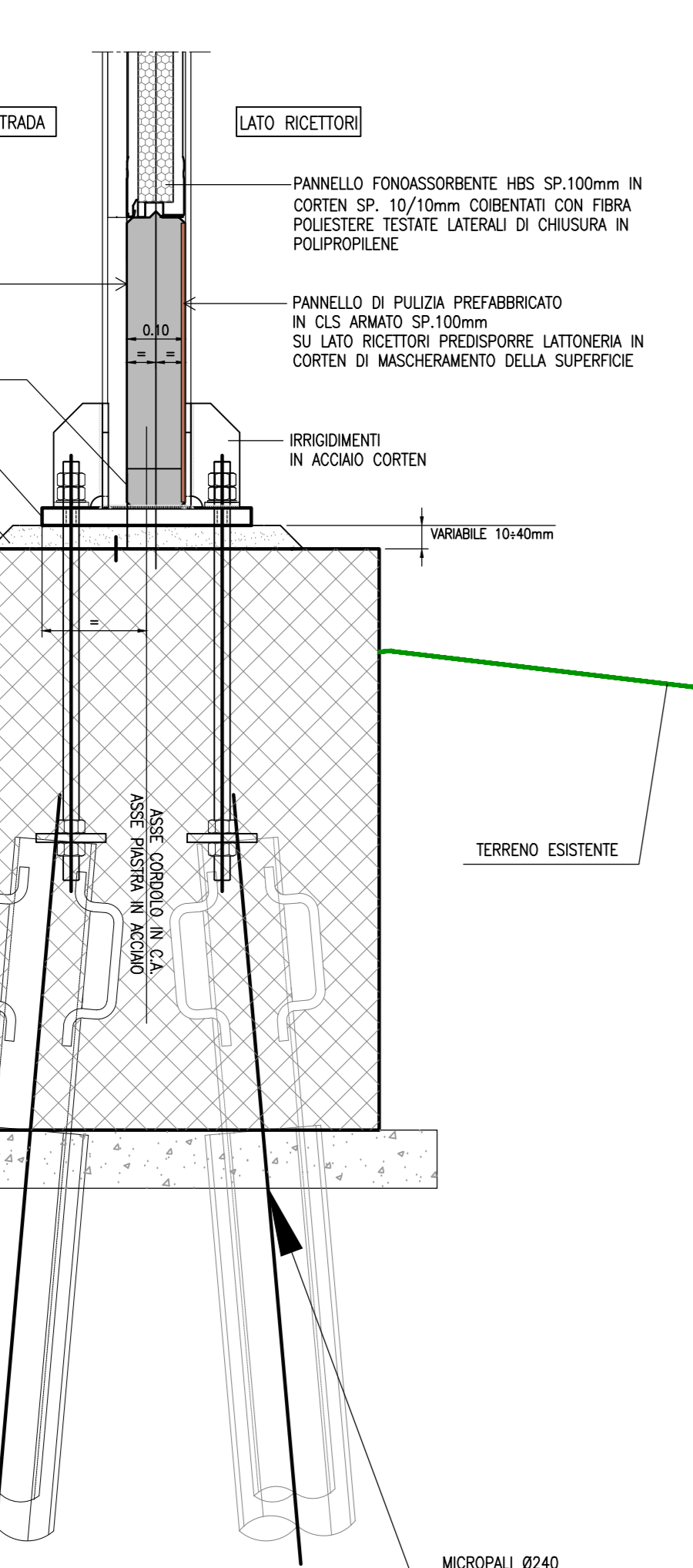
1:200



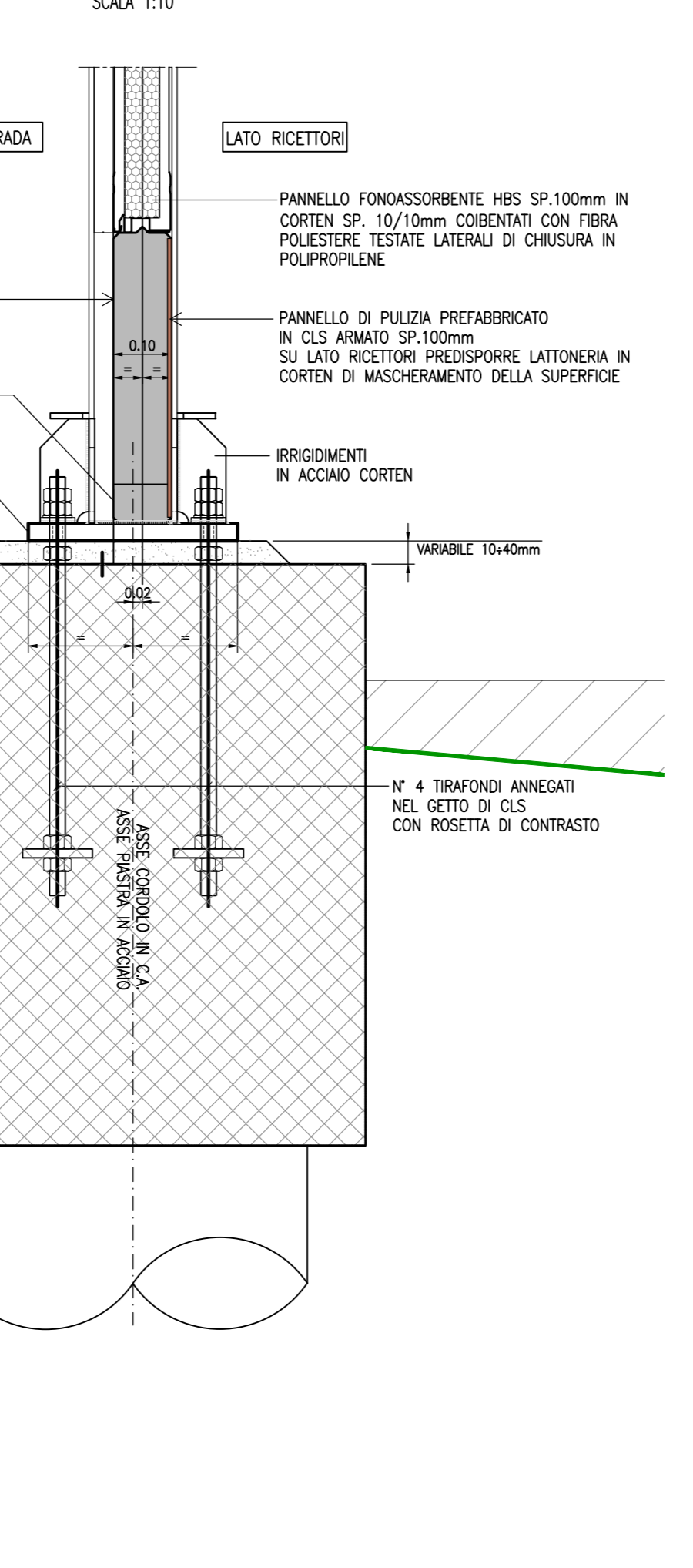
SEZIONE 68 (TIPICA) SCAIA 1:25



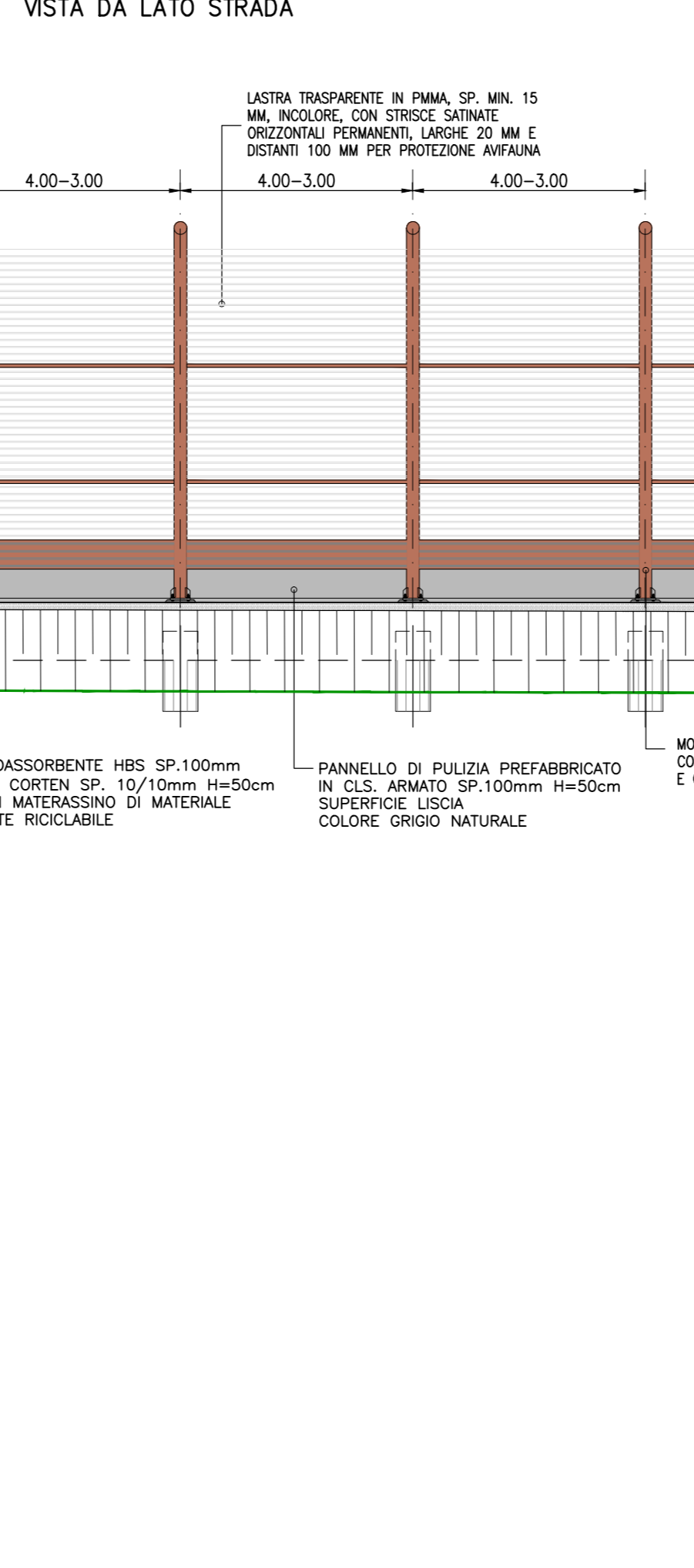
DETTAGLIO "2" SCAIA 1:10



DETTAGLIO "1" SCAIA 1:10



DETTAGLIO "A" SCAIA 1:100



Project information block including the logo 'autostrade per l'italia', project name 'AUTOSTRADA (A1) : MILANO - NAPOLI', specific project 'AMPLIAMENTO ALLA QUARTA CORSIA DEL TRATTO MILANO SUD (Tang. Ovest) - LODI', and 'PROGETTO ESECUTIVO AU - AUTOSTRADA A1 OPERE COMPLEMENTARI Barr. acustica S H=5m pk 13+333,92/13+510,38'. It contains technical specifications, a table of revisions, and logos of the engineering firms 'spea engineering' and 'Atlantia'.