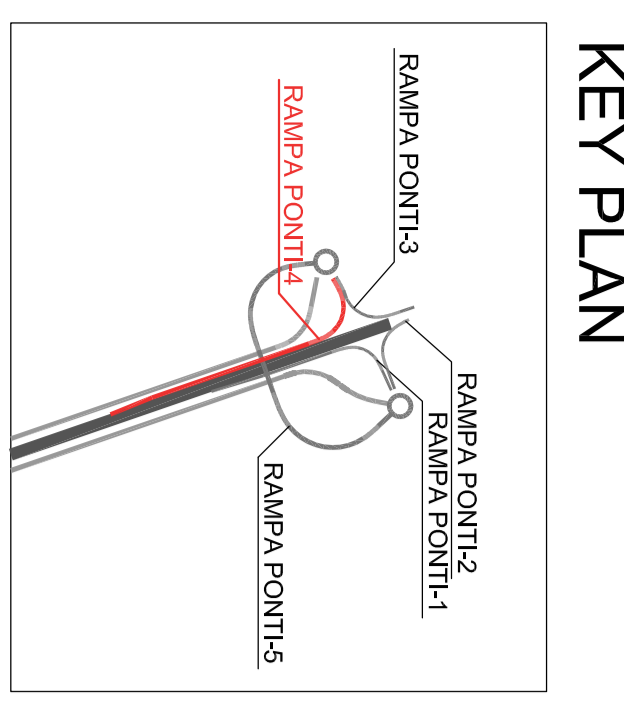
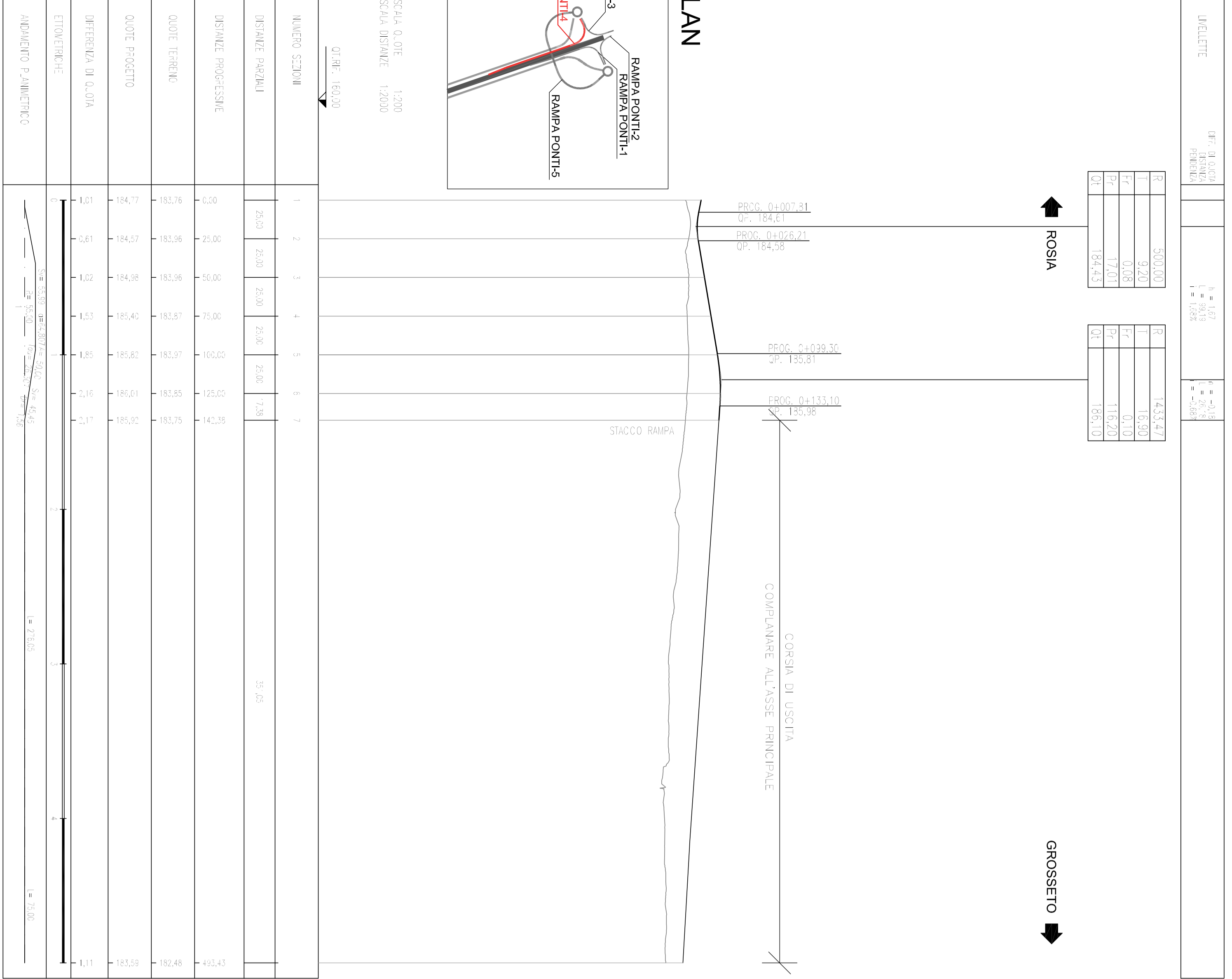
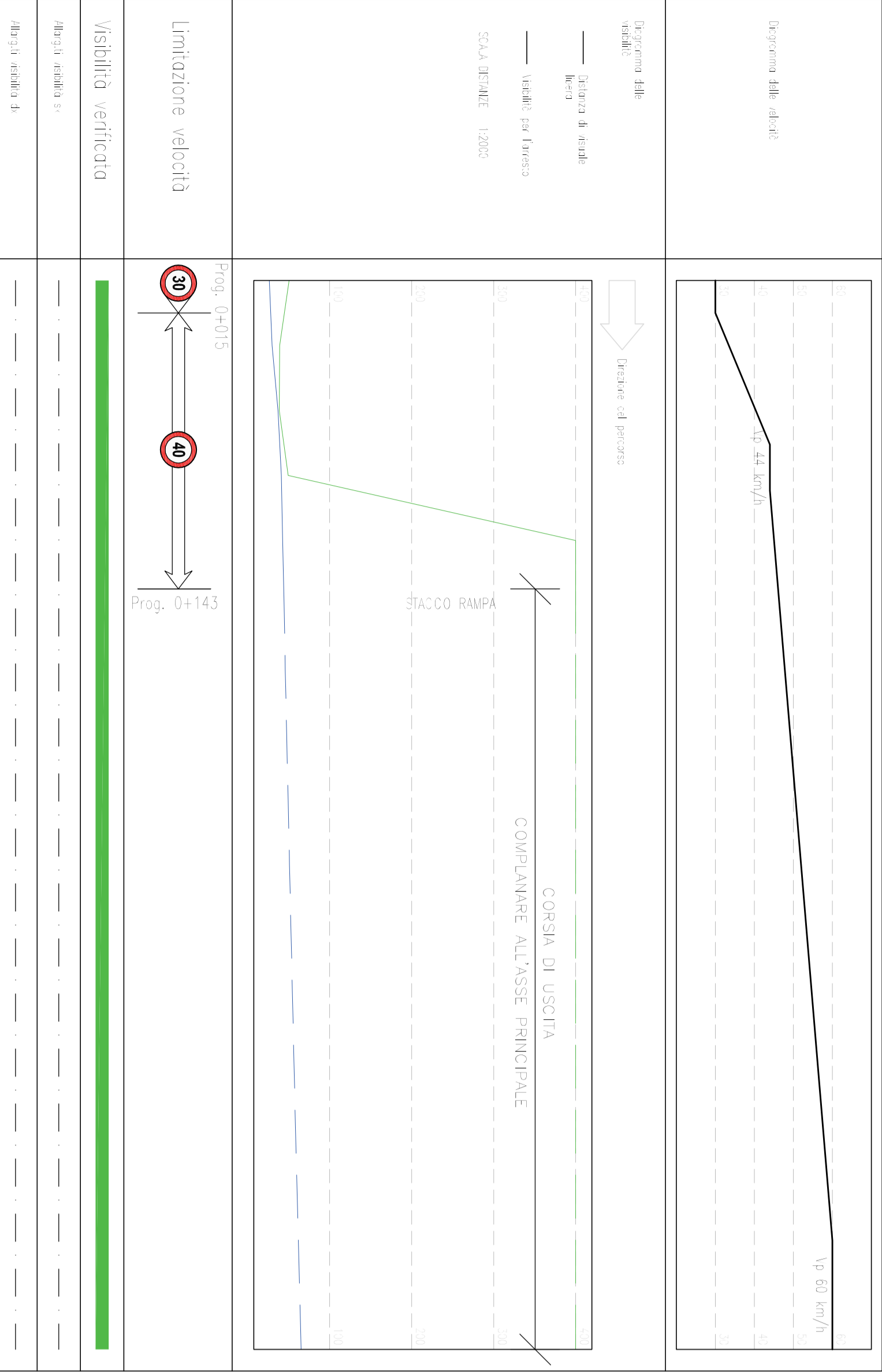


PROFilo RAMPa PONT14

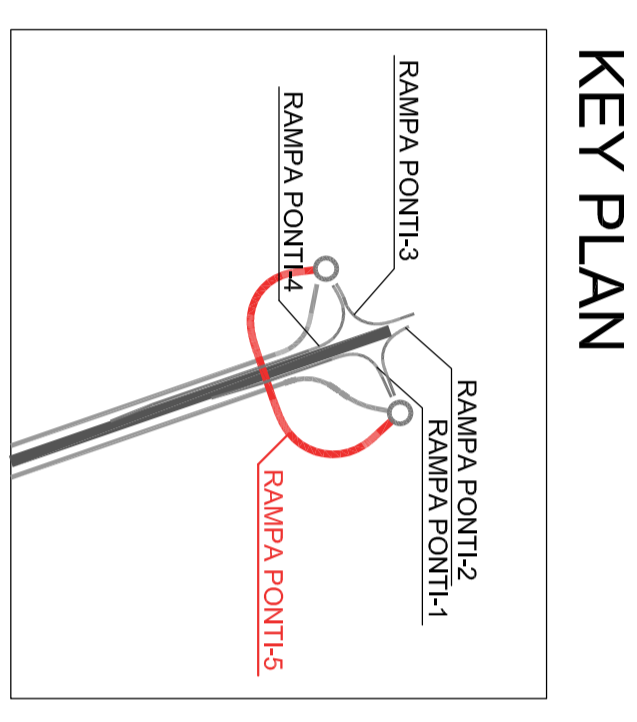
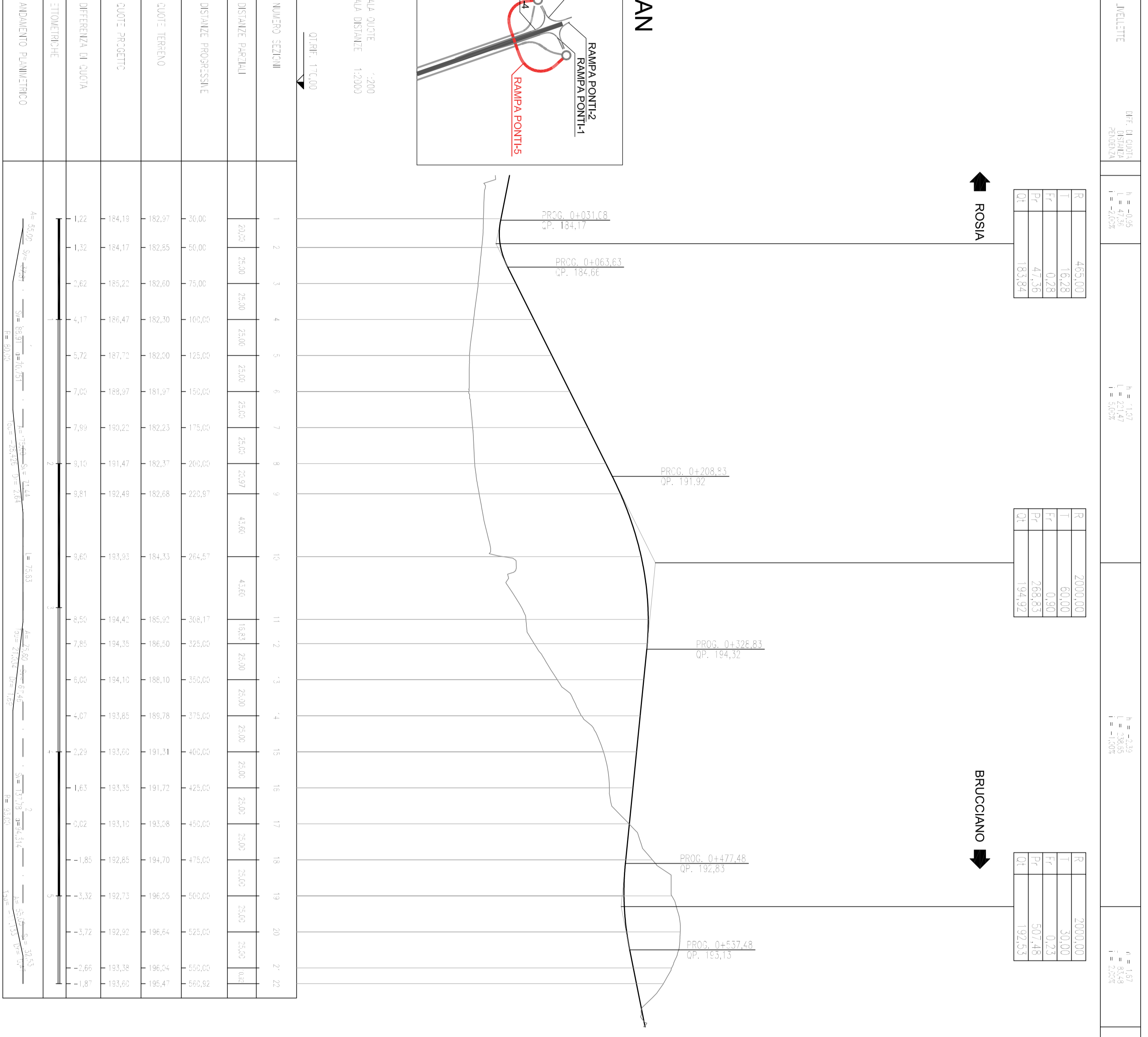


KEY PLAN

DIAGRAMMA RAMPa PONT14

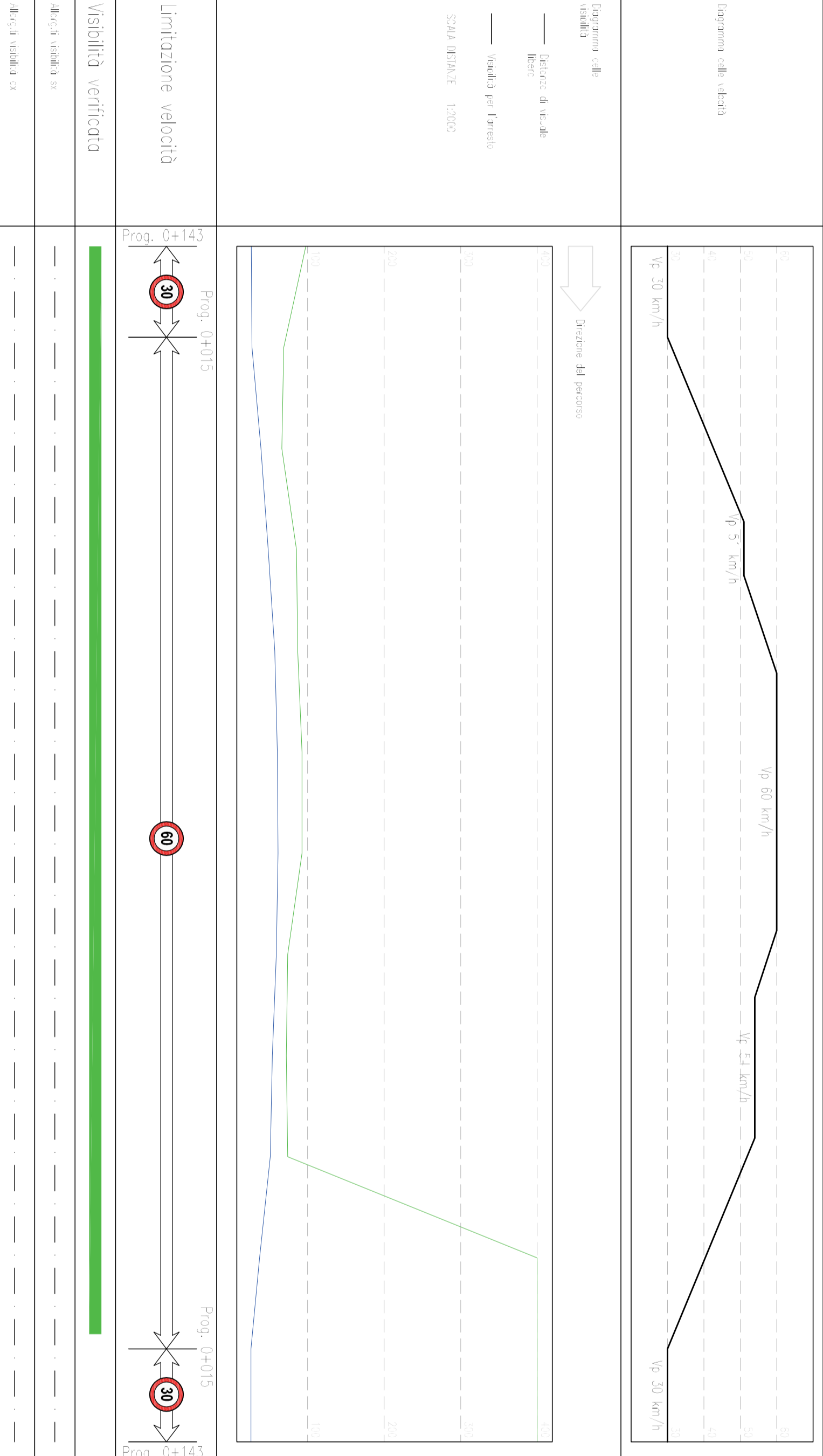


PROFilo RAMPa PONT15

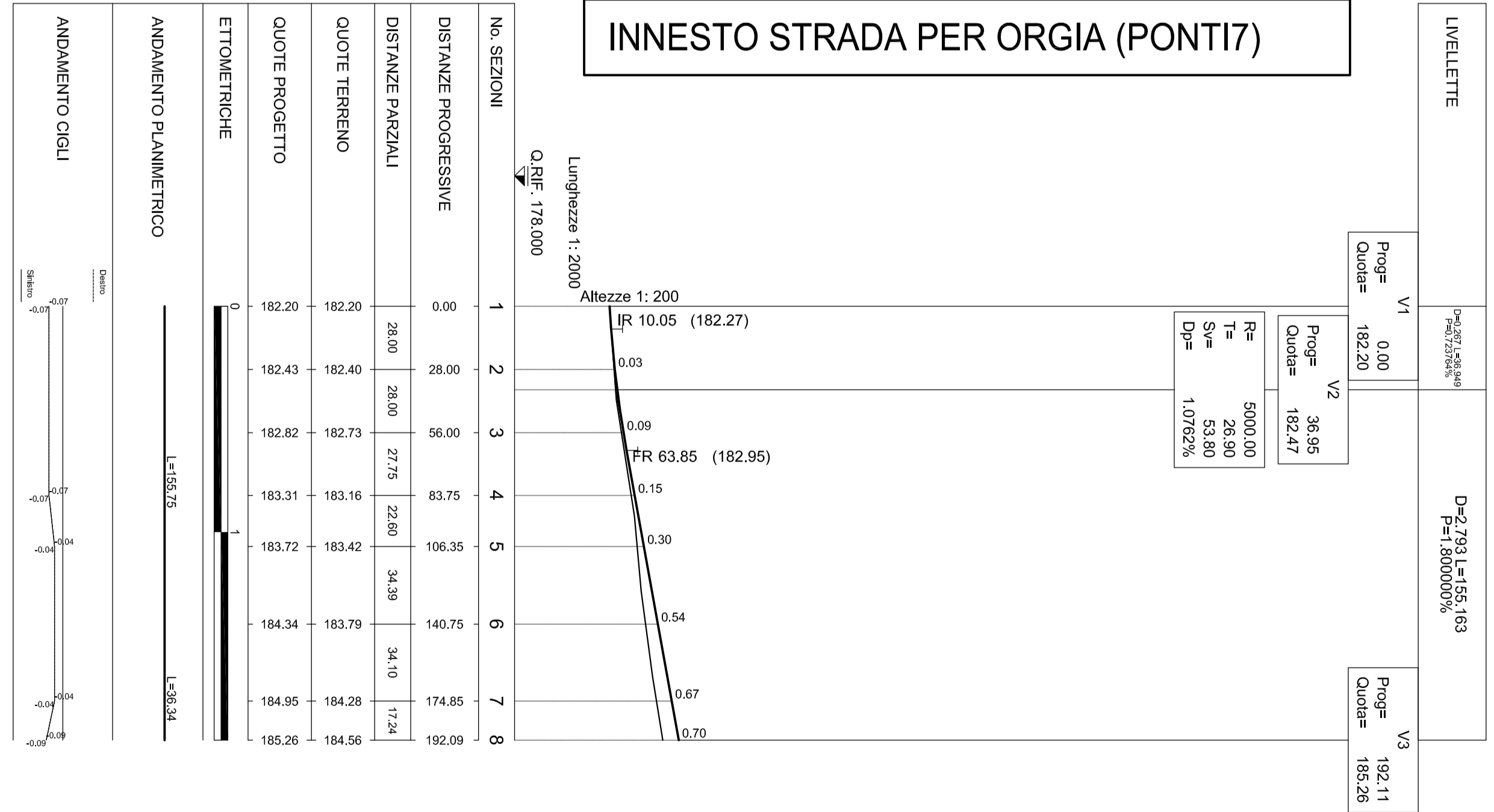


KEY PLAN

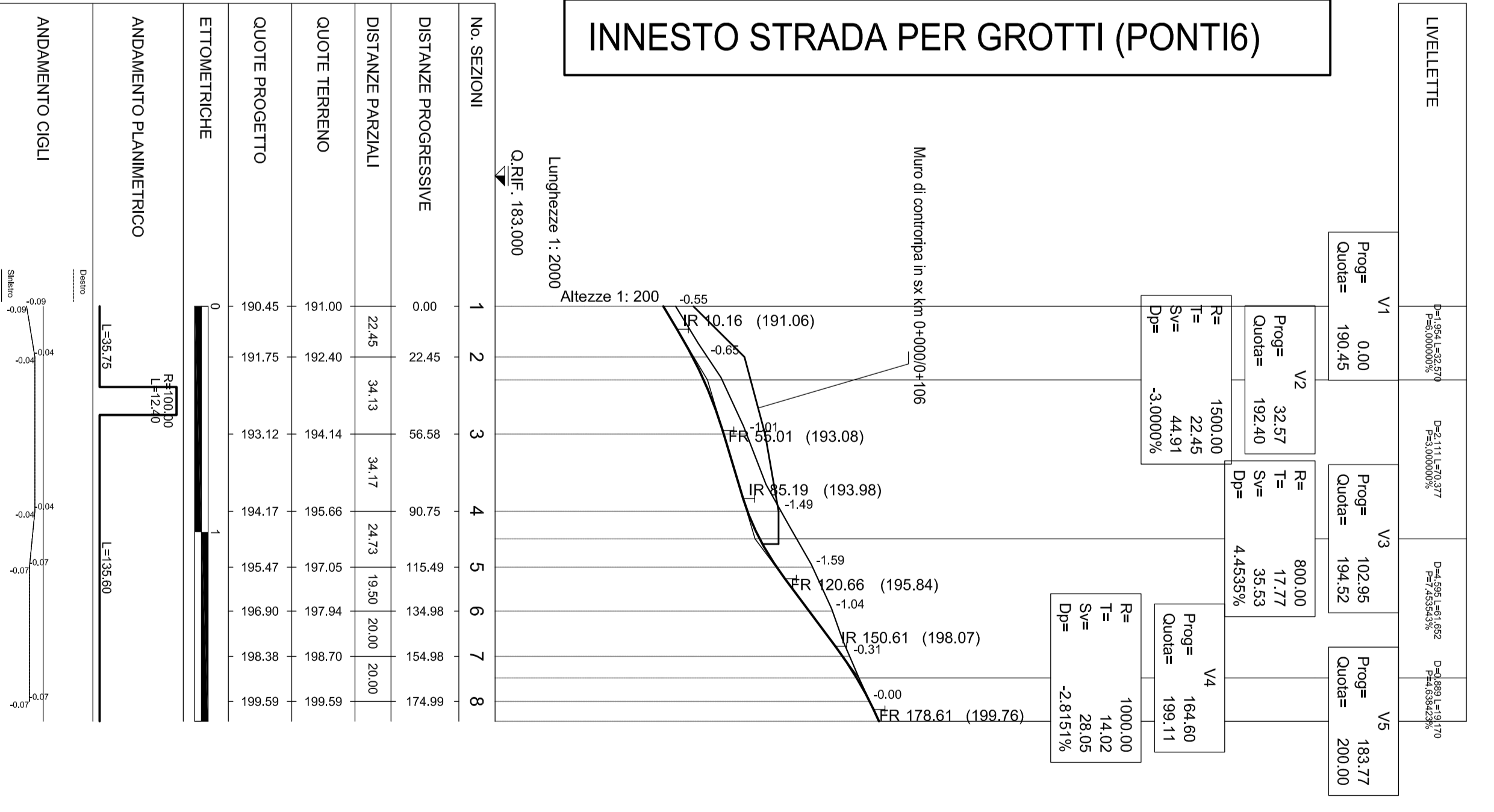
DIAGRAMMA RAMPa PONT15



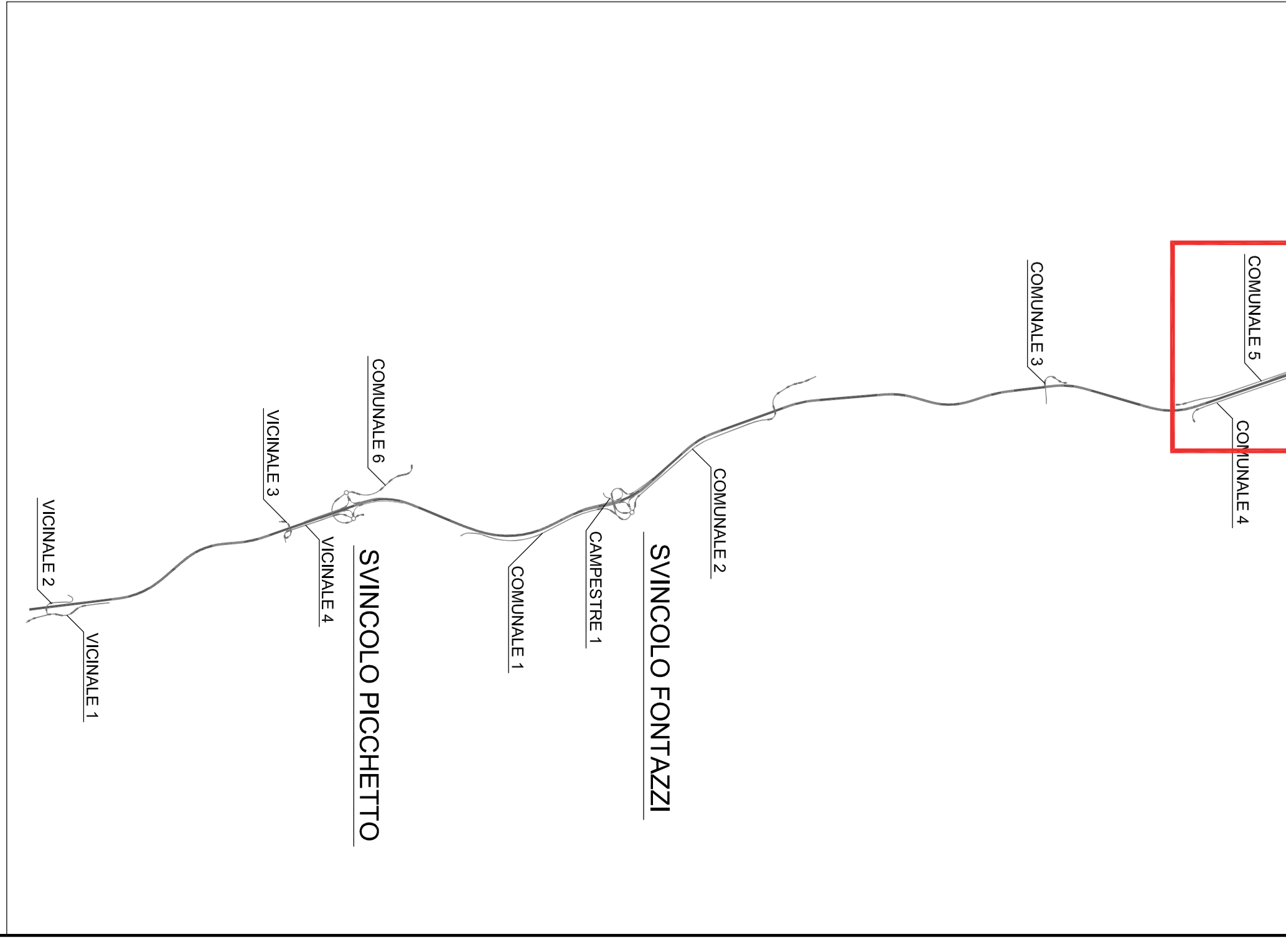
INNesto STRADA PER ORGIA (PONT17)



INNesto STRADA PER GROTTI (PONT16)



KEY PLAN



NOTA:
IL PRESENTE ELABORATO SOSTITUISCE L'ELABORATO V005V001RAMP02.A

Anas Spa
Direziona Progettazione Realizzazione Lavori

ITINERARIO INTERNAZIONALE E78
S.G.C. GROSSETTO - FANO
ADEGUAMENTO A 4 CORSIE
NEL TRATTO GROSSETTO - SIENA (S.S. 223 "DI PAGANICO")
DAL KM 41+800 AL KM 53+400 - LOTTO 9

PROGETTO DEFINITIVO

PROGETTISTA	ANAS SPA	CONTORE	ANAS SPA
REDAZIONE	ANAS SPA	REDAZIONE	ANAS SPA
VERIFICA	ANAS SPA	VERIFICA	ANAS SPA
APPROVAZIONE	ANAS SPA	APPROVAZIONE	ANAS SPA

NO. SEZIONI	1	2	3	4	5	6	7	8
DISTANZE PROGRESSIVE	0+00	22+45	56+58	70+50	115+49	134+96	151+94	167+14
DISTANZE PARZIALI	22+45	34+17	24+13	19+00	20+00	20+00	20+00	20+00
QUOTE TERRENO	191.00	192.04	194.14	195.91	197.04	198.70	199.86	200.00
QUOTE PROGETTO	194.00	194.14	194.14	194.14	194.14	194.14	194.14	194.14
ETIQUETTE	L.130/20							
AVANZAMENTO PLANIMETRICO	L.130/20							
AVANZAMENTO OGNI	L.130/20							