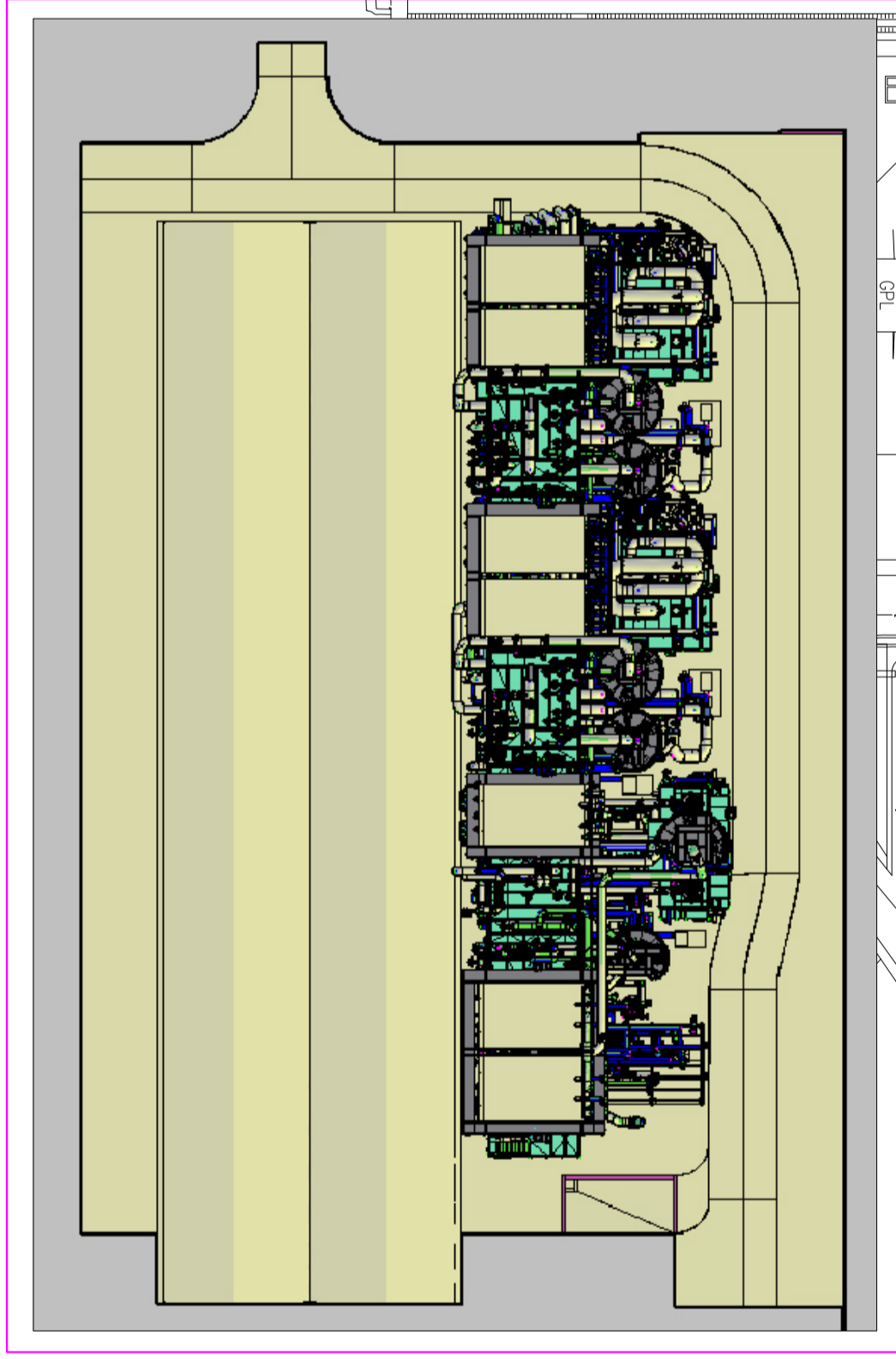
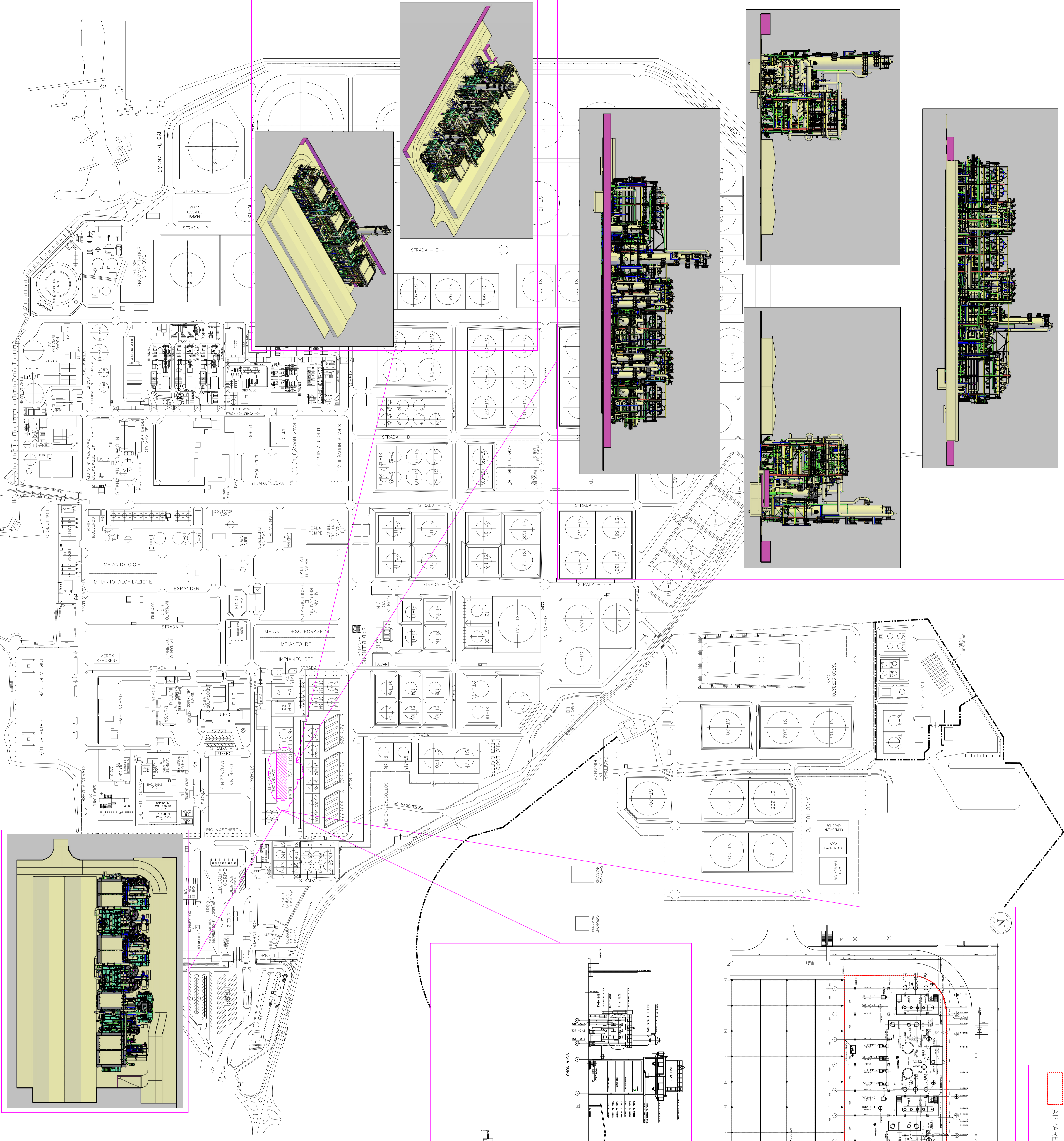
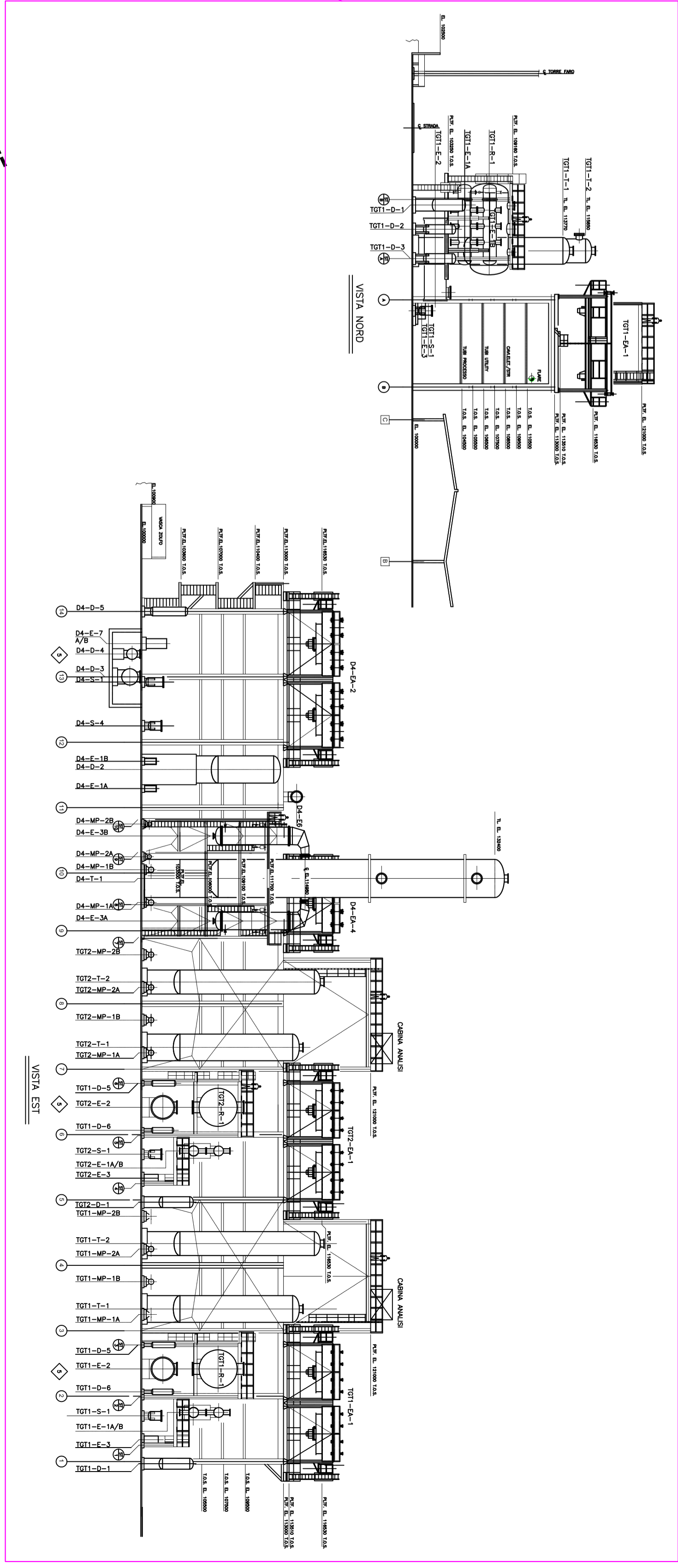
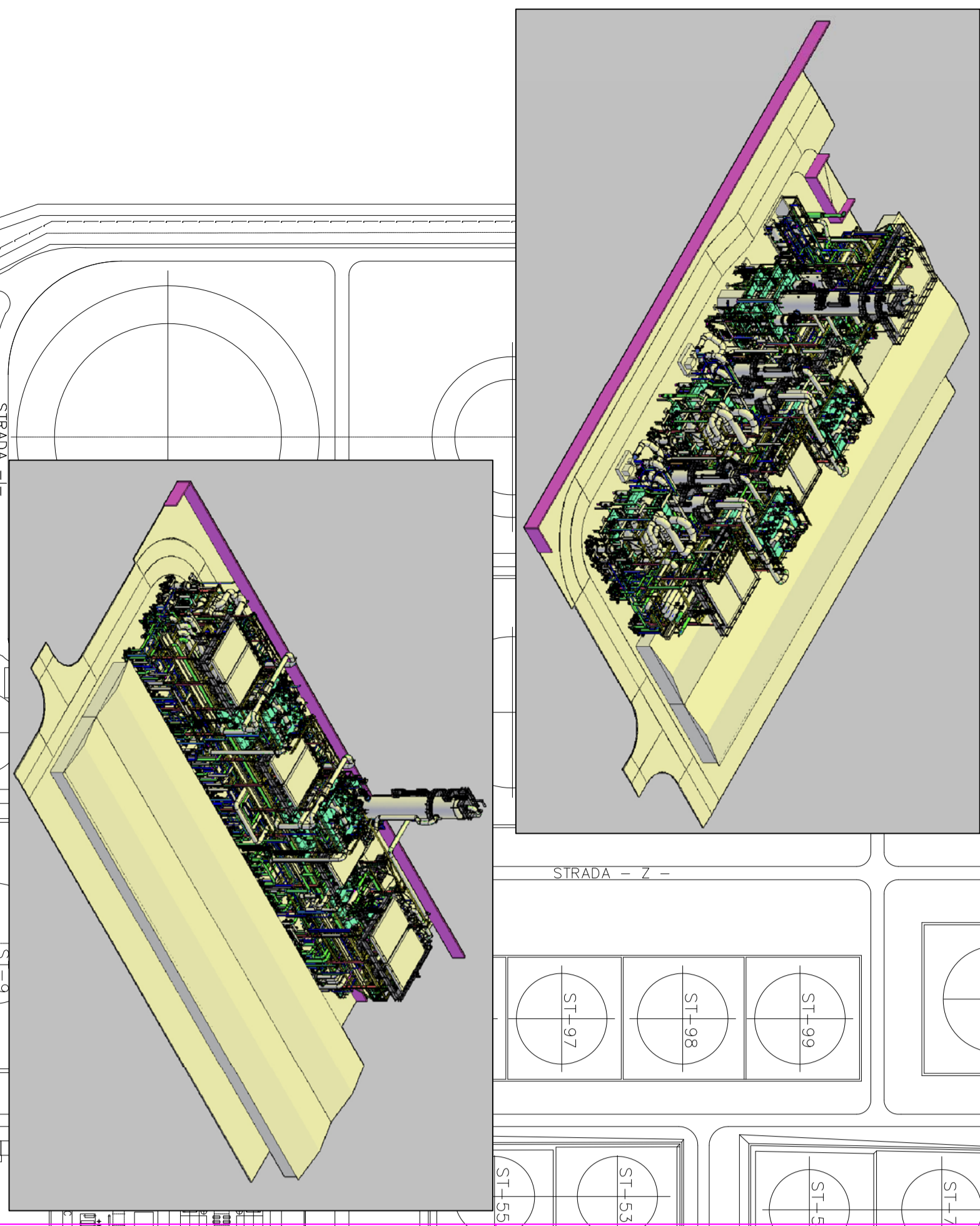
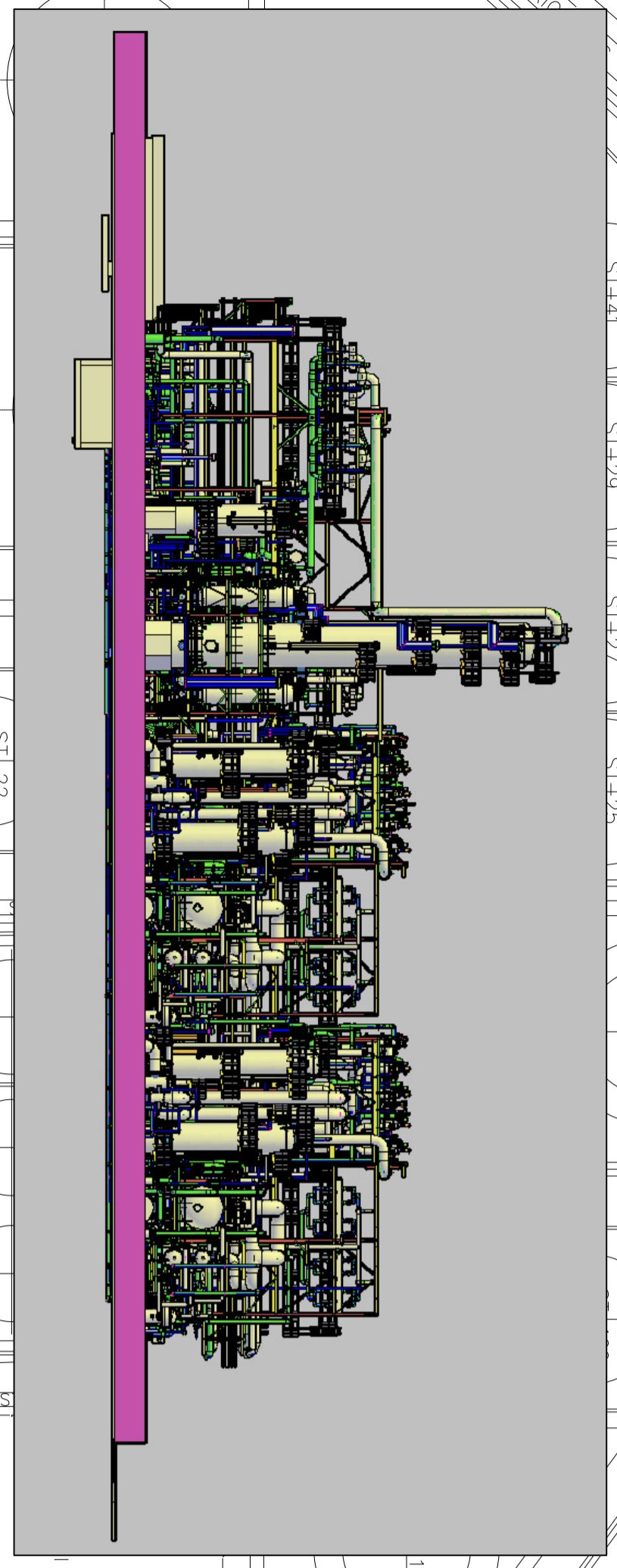
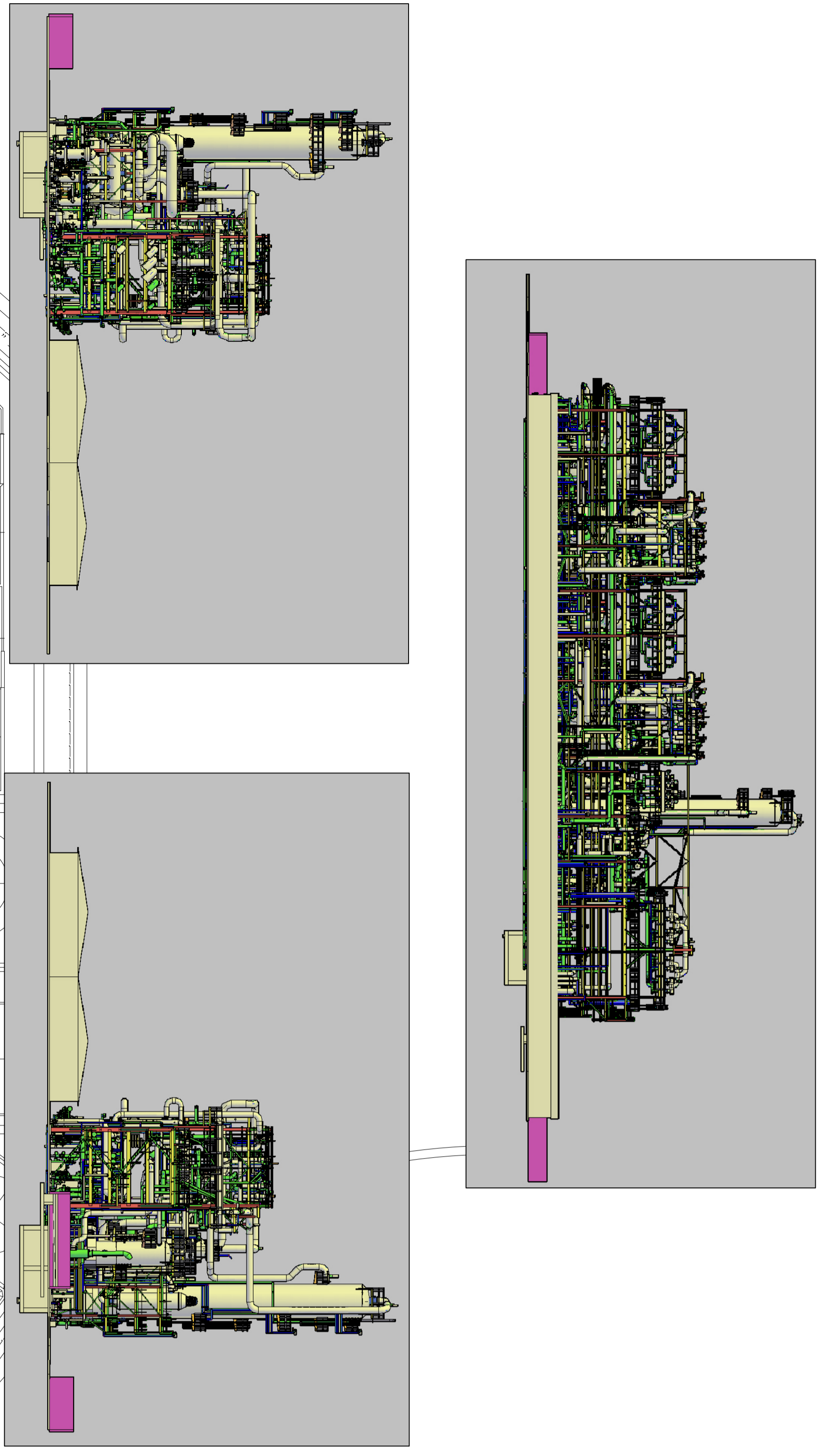
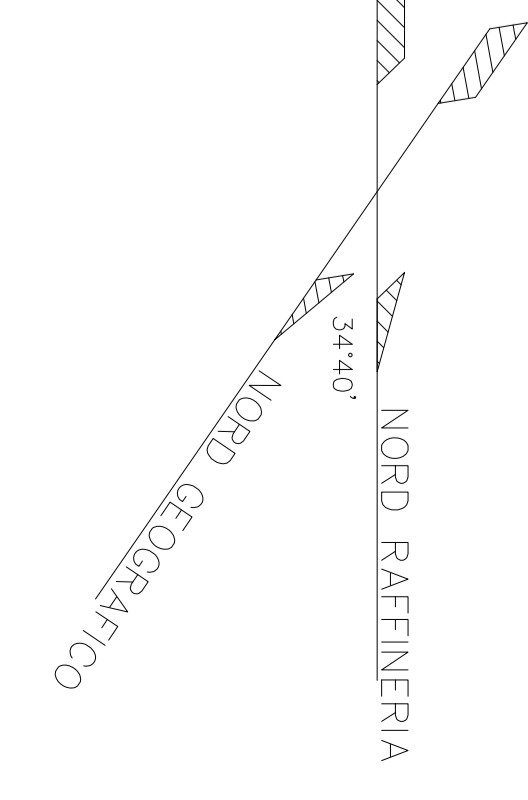
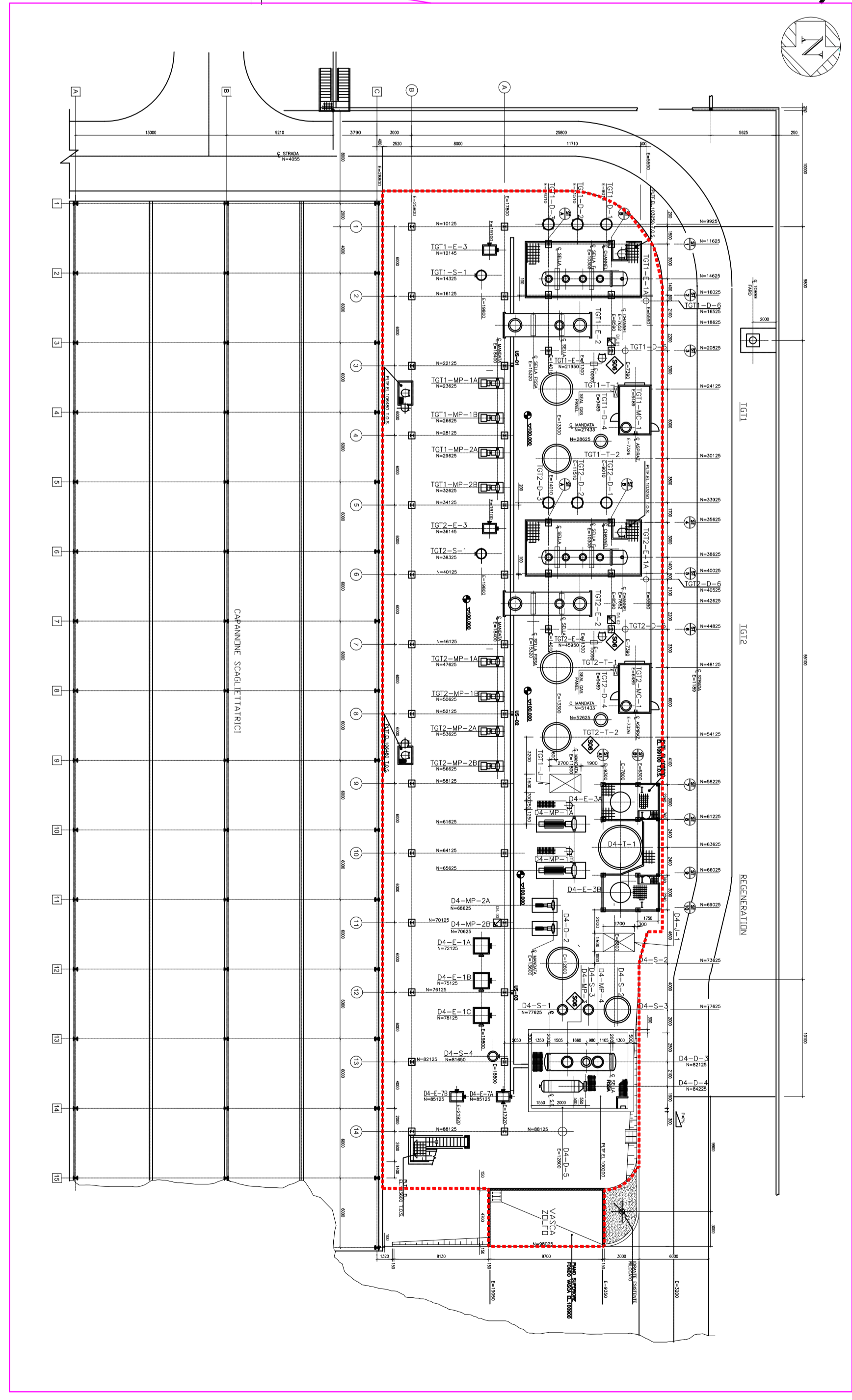


APPARECCHIATURE NUOVE



NOME FILE : Plan\_TGTU\_NEW.dwg

RAFFINERIA GENERALE UNITA' TGTU 1/2

SARTEC Sarras Technologie S.r.l.  
SARRAS S.p.A.  
RAFFINERIE SARDE - SARROCH (CA)

Disegno eseguito in "autocad" edotto conformati a mano.

Scale: 1:2000  
Sottoscale: 1: -  
Sottoscale 060: -