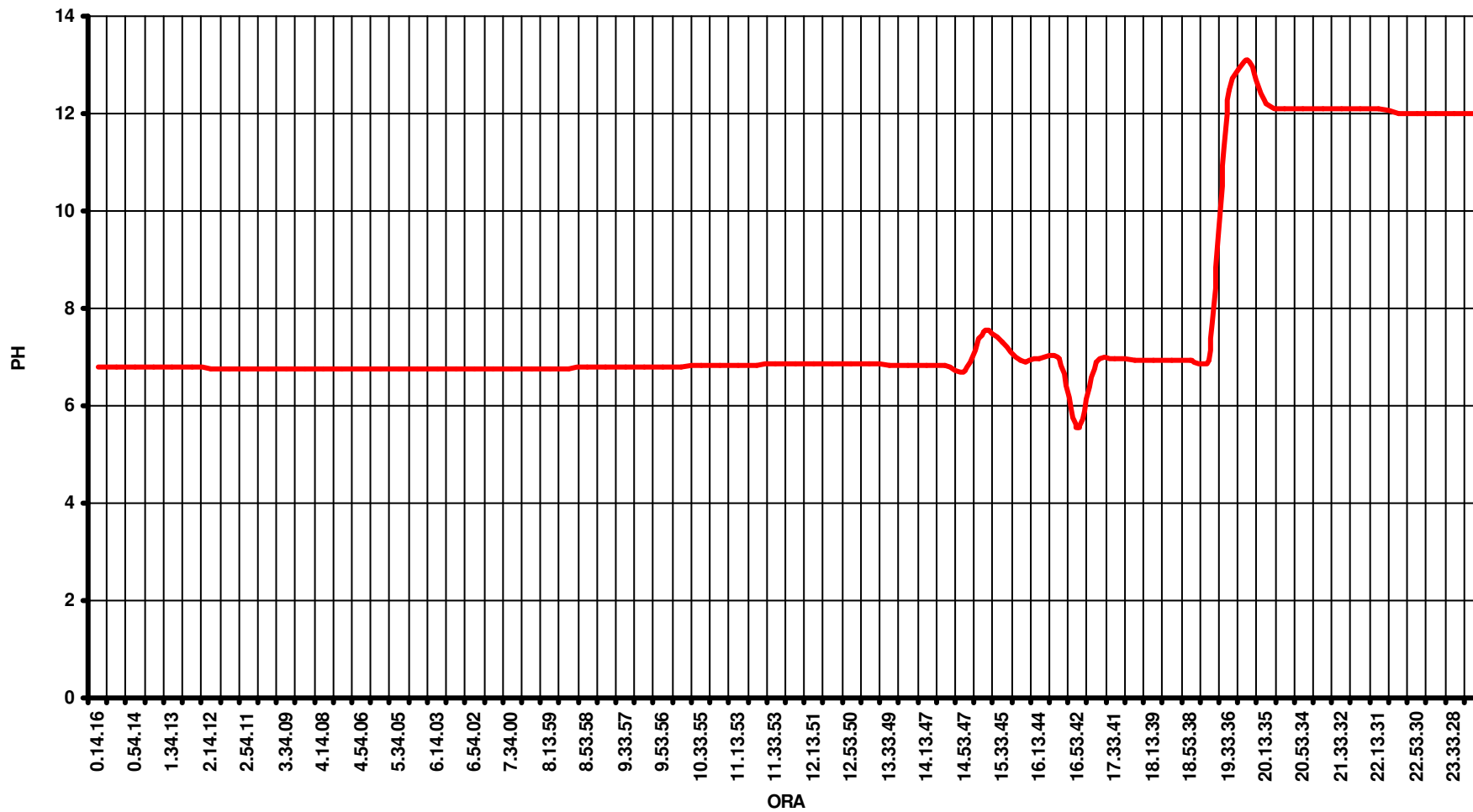


DATA

01/10/03

### VALORE PH IN USCITA ACIDA

Value

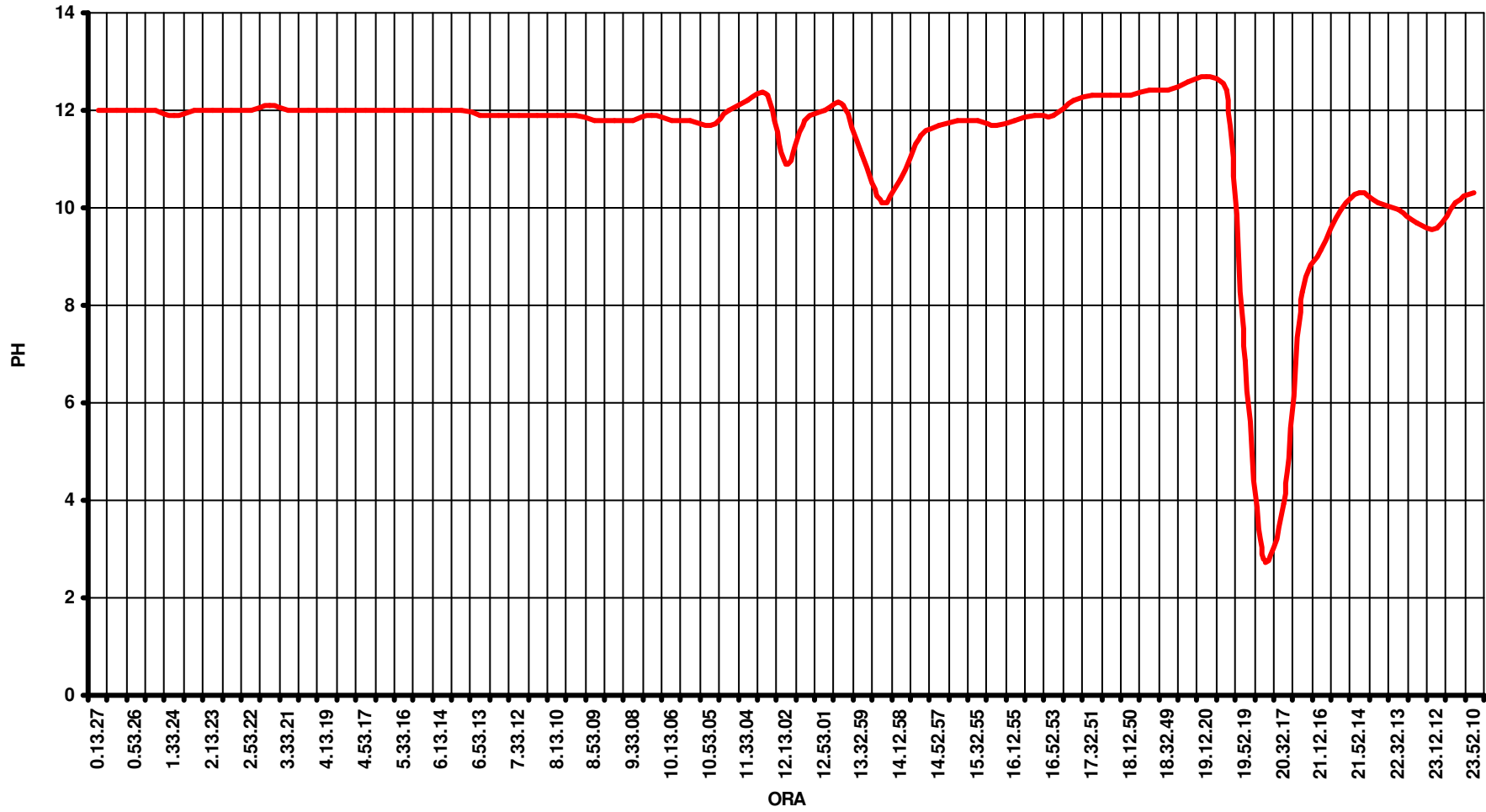


DATA

02/10/03

### VALORE PH IN USCITA ACIDA

Value

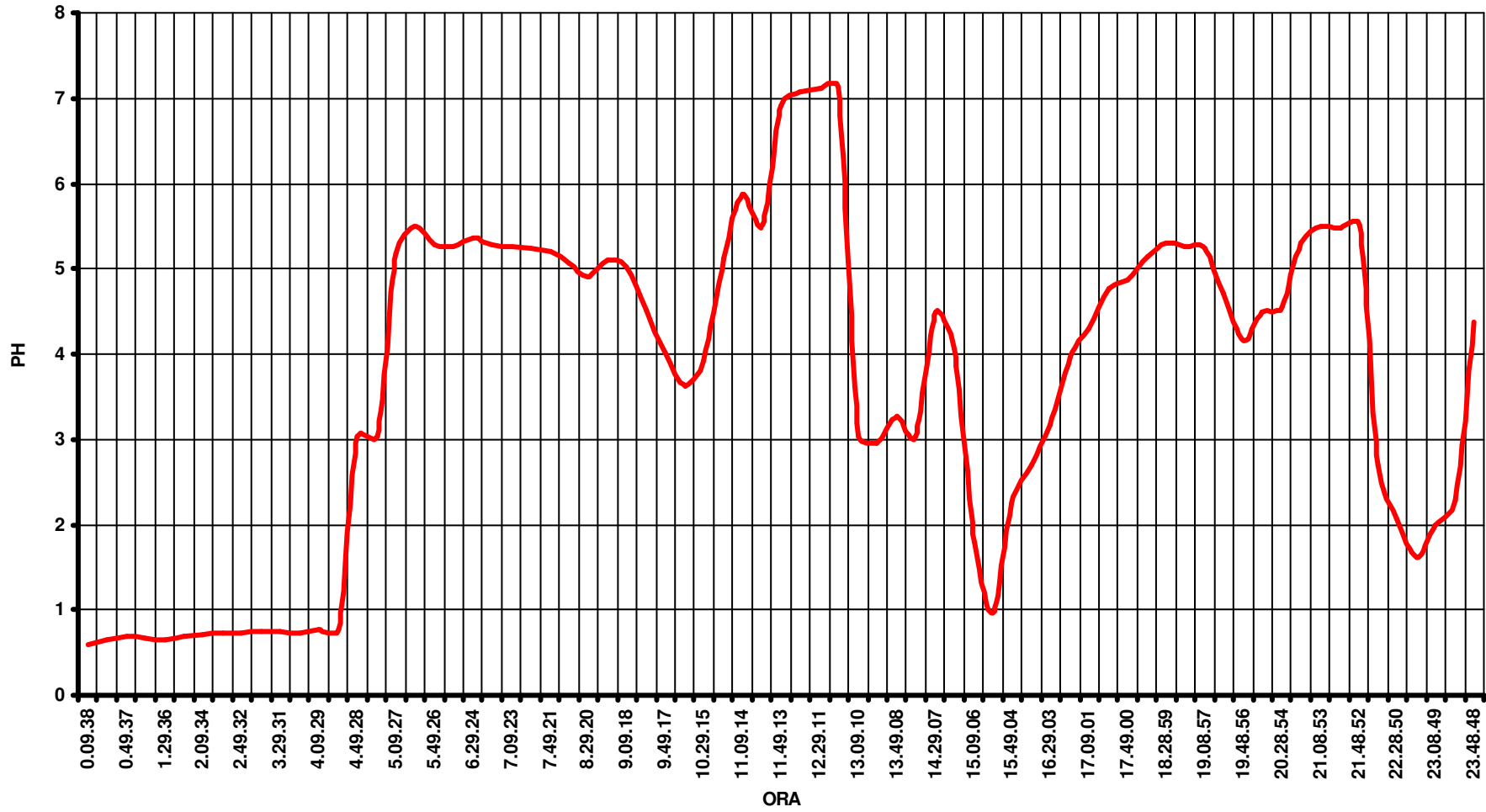


DATA

06/10/03

### VALORE PH IN USCITA ACIDA

Value

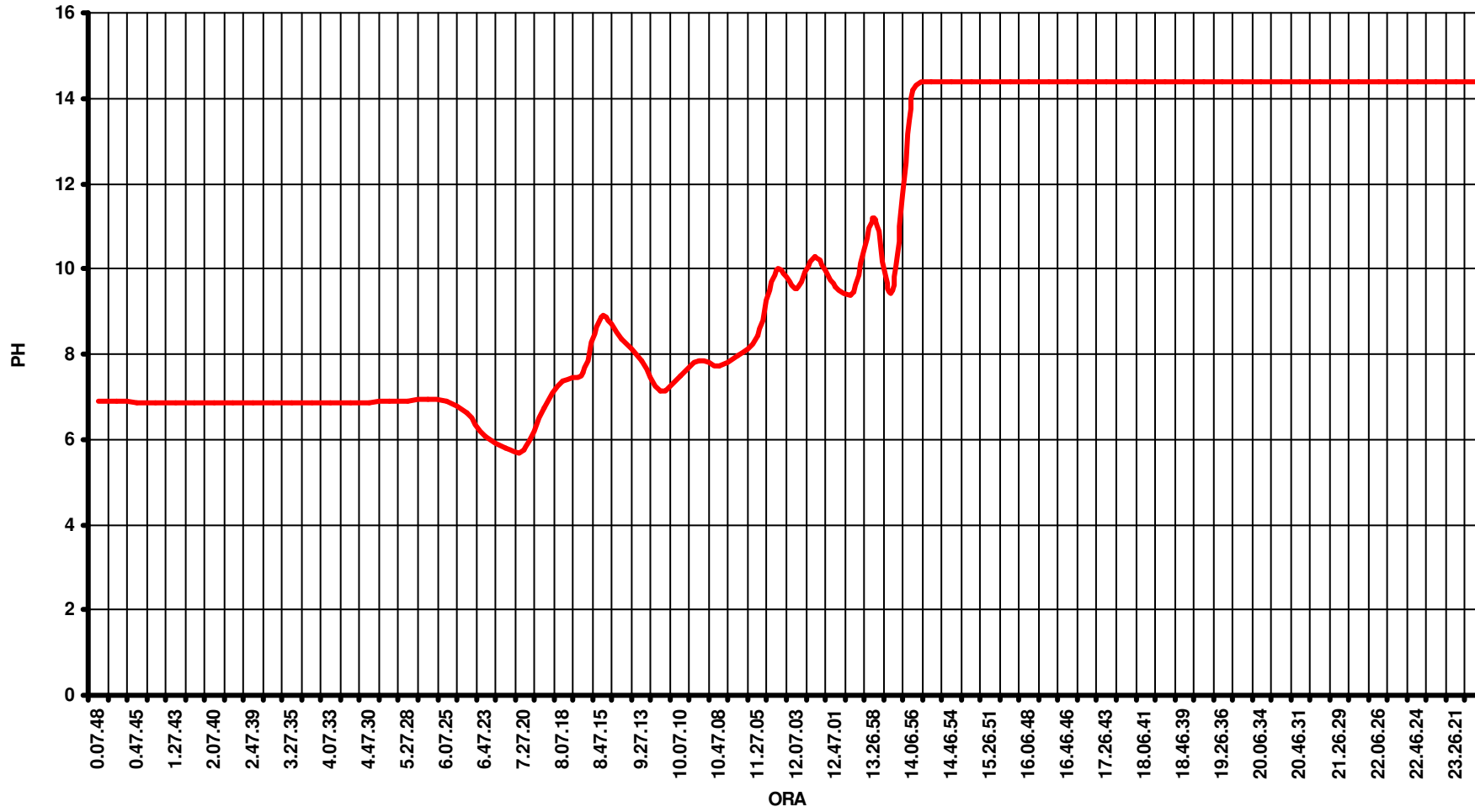


DATA

11/02/03

### VALORE PH IN USCITA ACIDA

Value



DATA

12/02/03

### VALORE PH IN USCITA ACIDA

Value



DATA

30/01/03

### VALORE PH IN USCITA ACIDA

Value

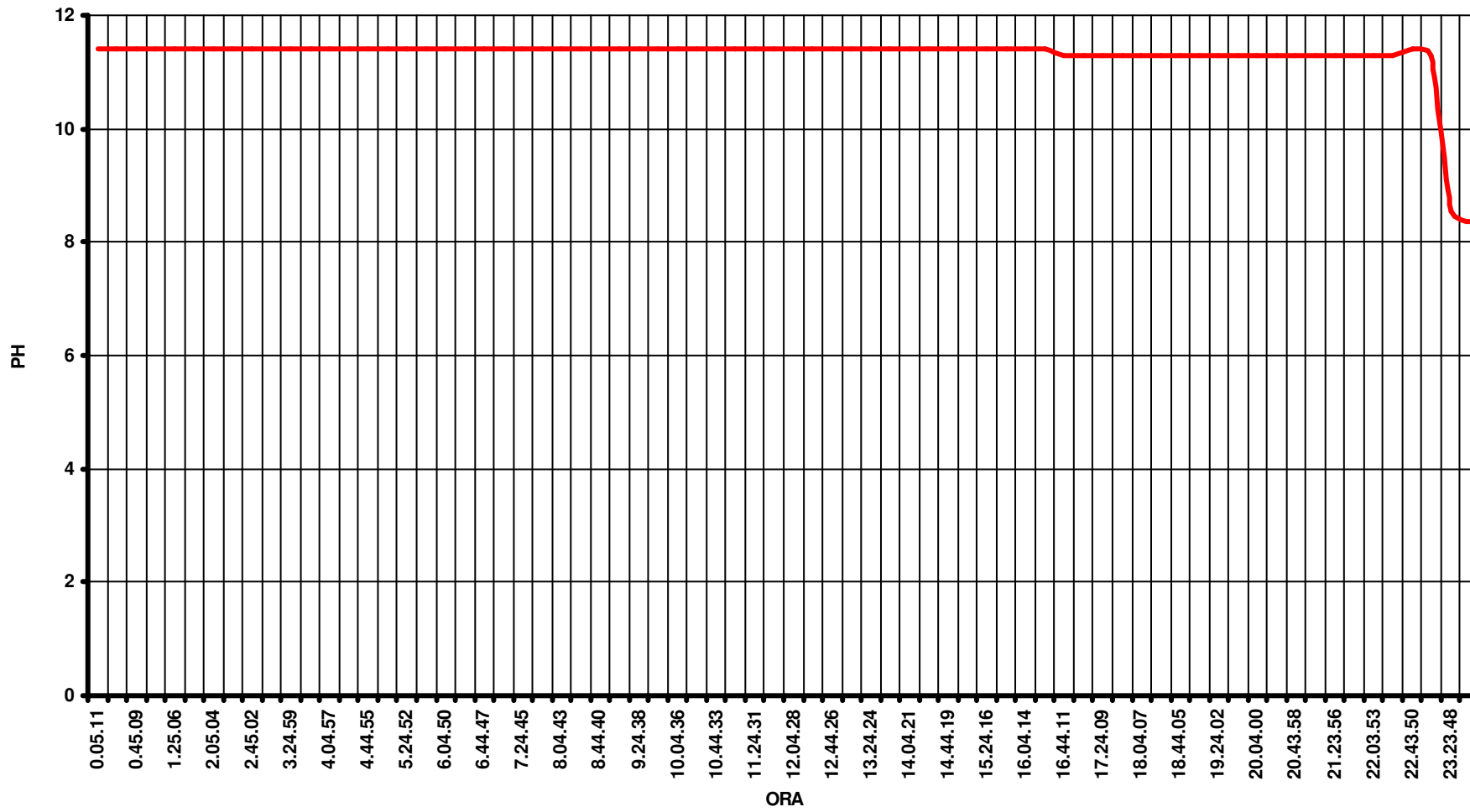


DATA

31/01/03

### VALORE PH IN USCITA ACIDA

Value

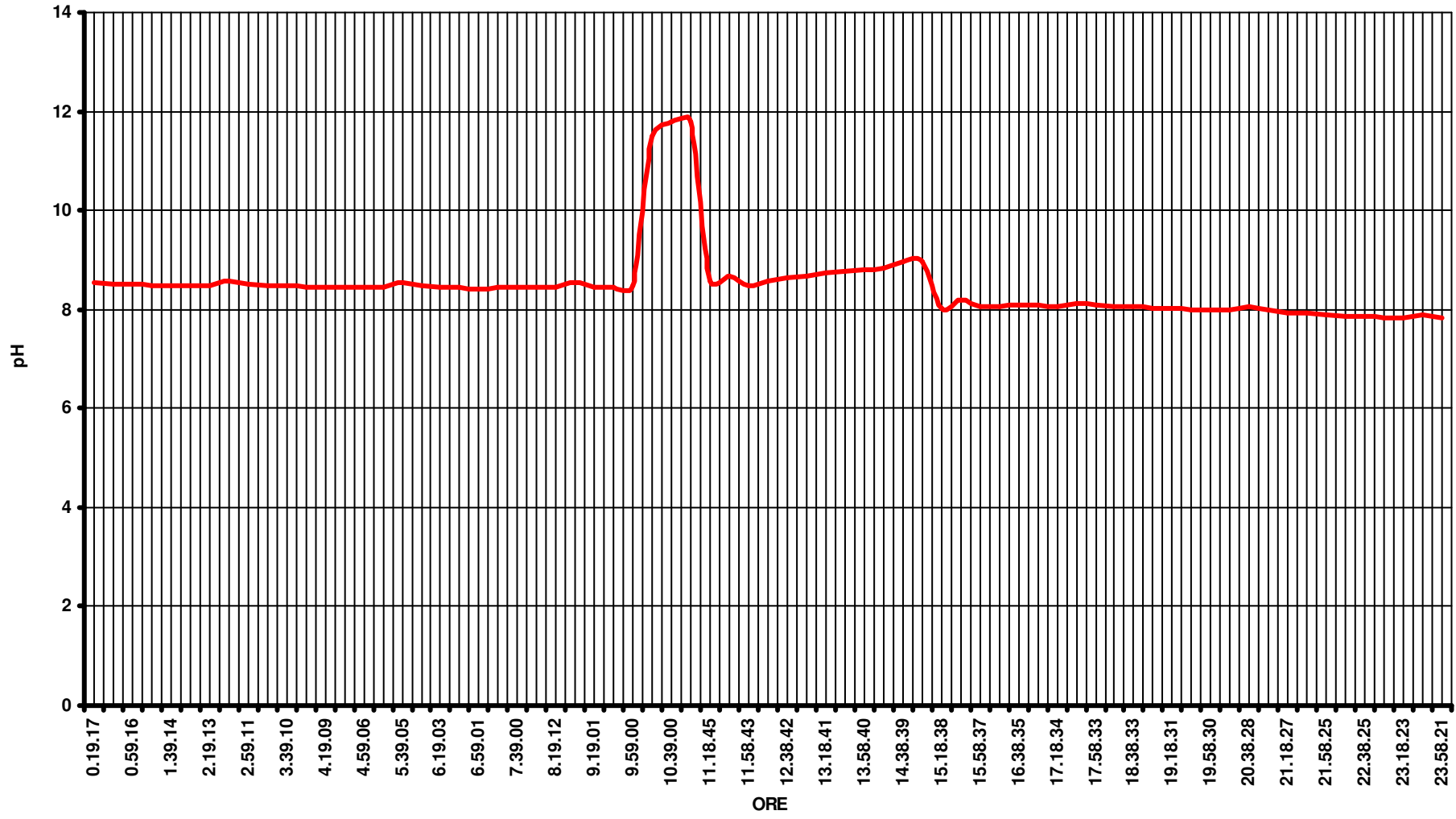


Data

09/04/03

pH PUNTO P1

Value



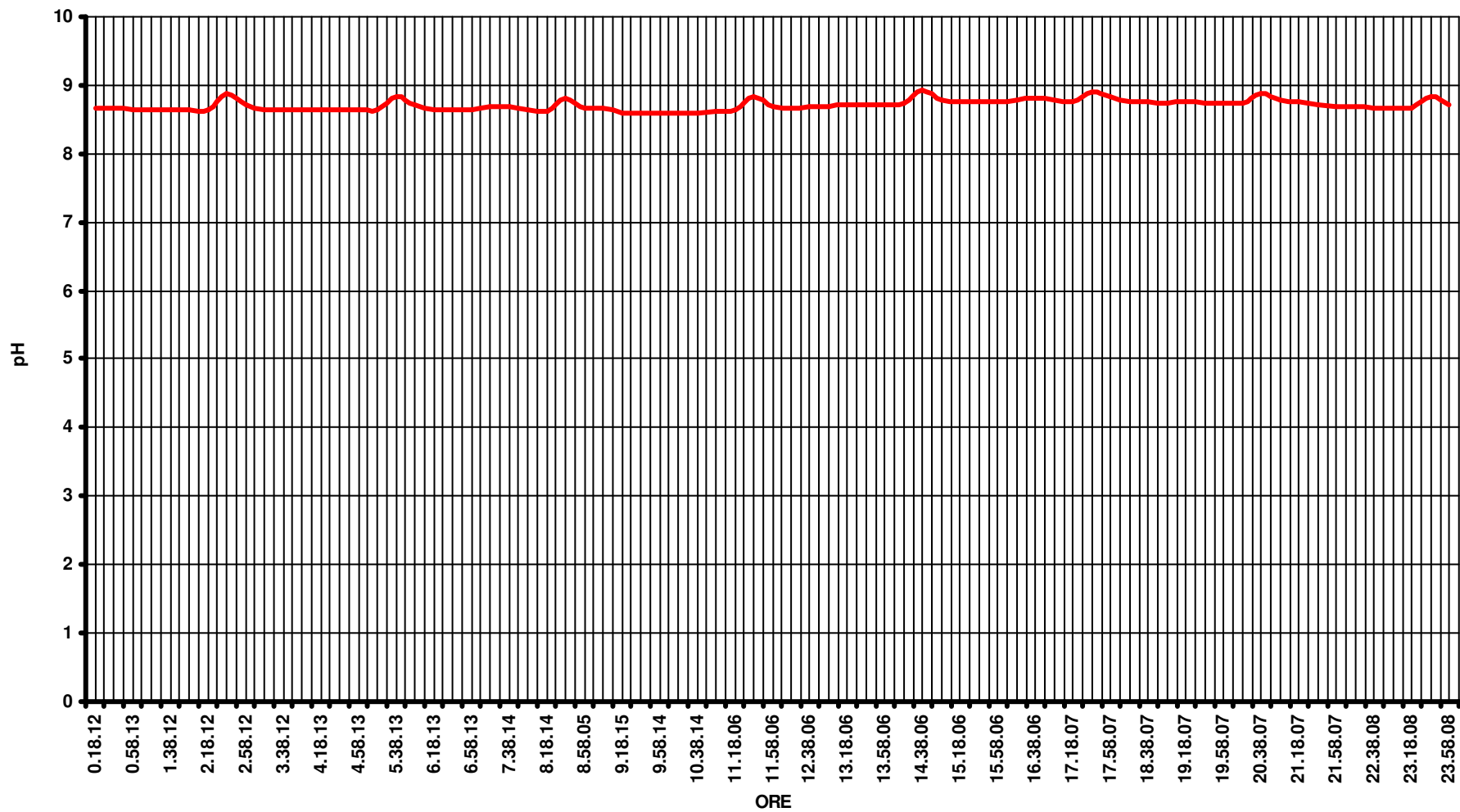


Data

09/04/03

pH PUNTO R1

Value

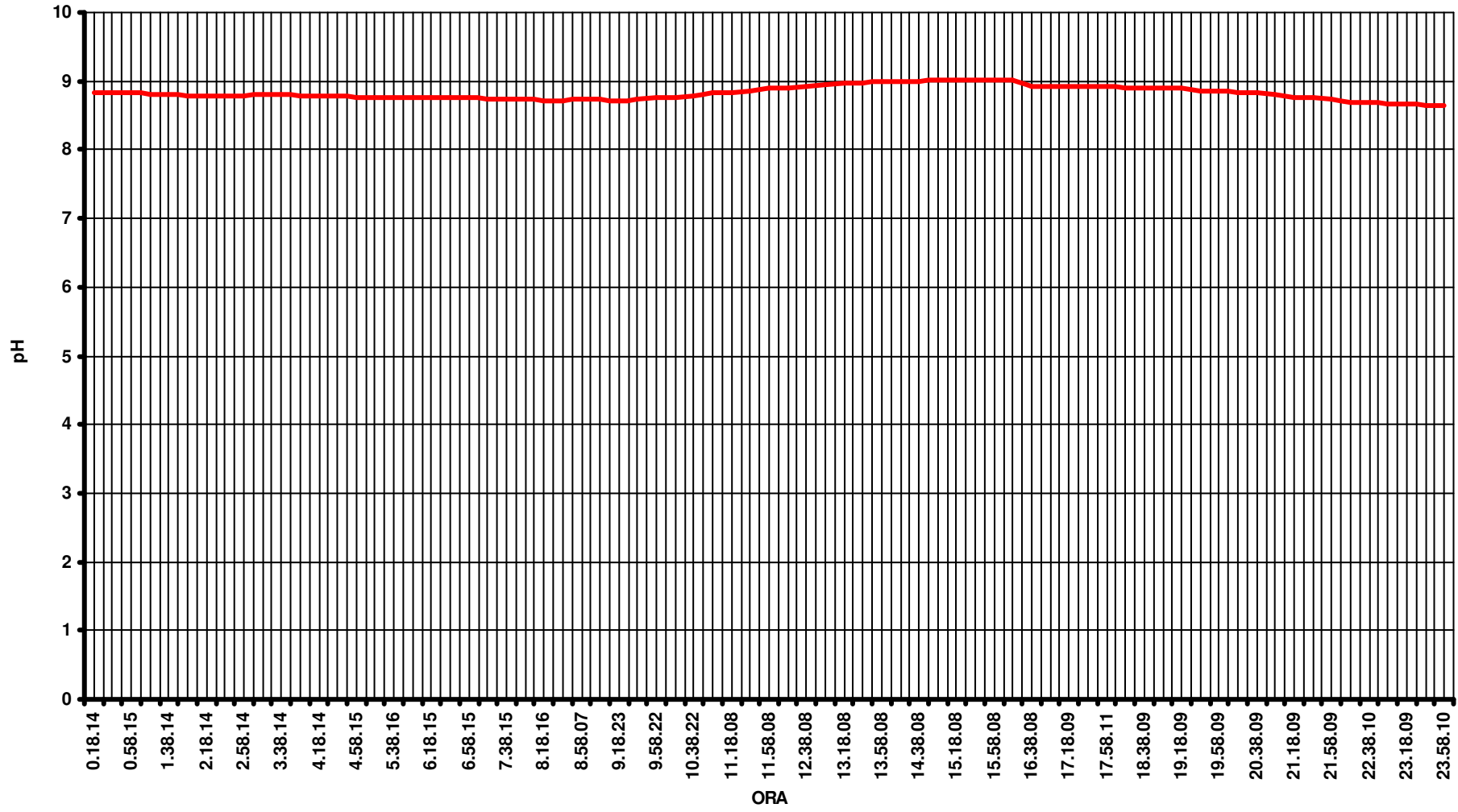


Data

09/04/03

pH PUNTO R2

Value

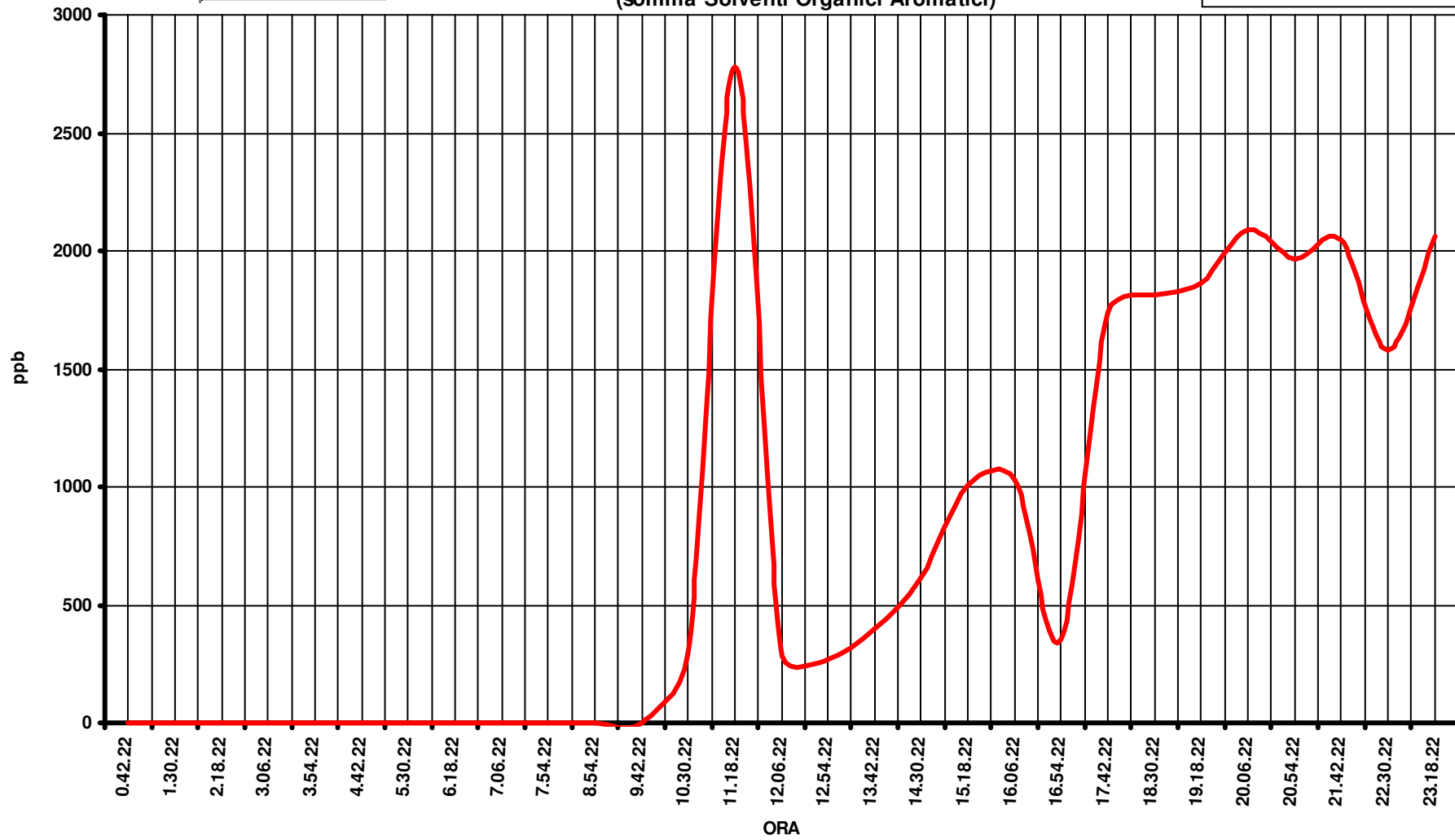


S.O.A. ACIDA  
(somma Solventi Organici Aromatici)

DATA

14/08/2003

Valore

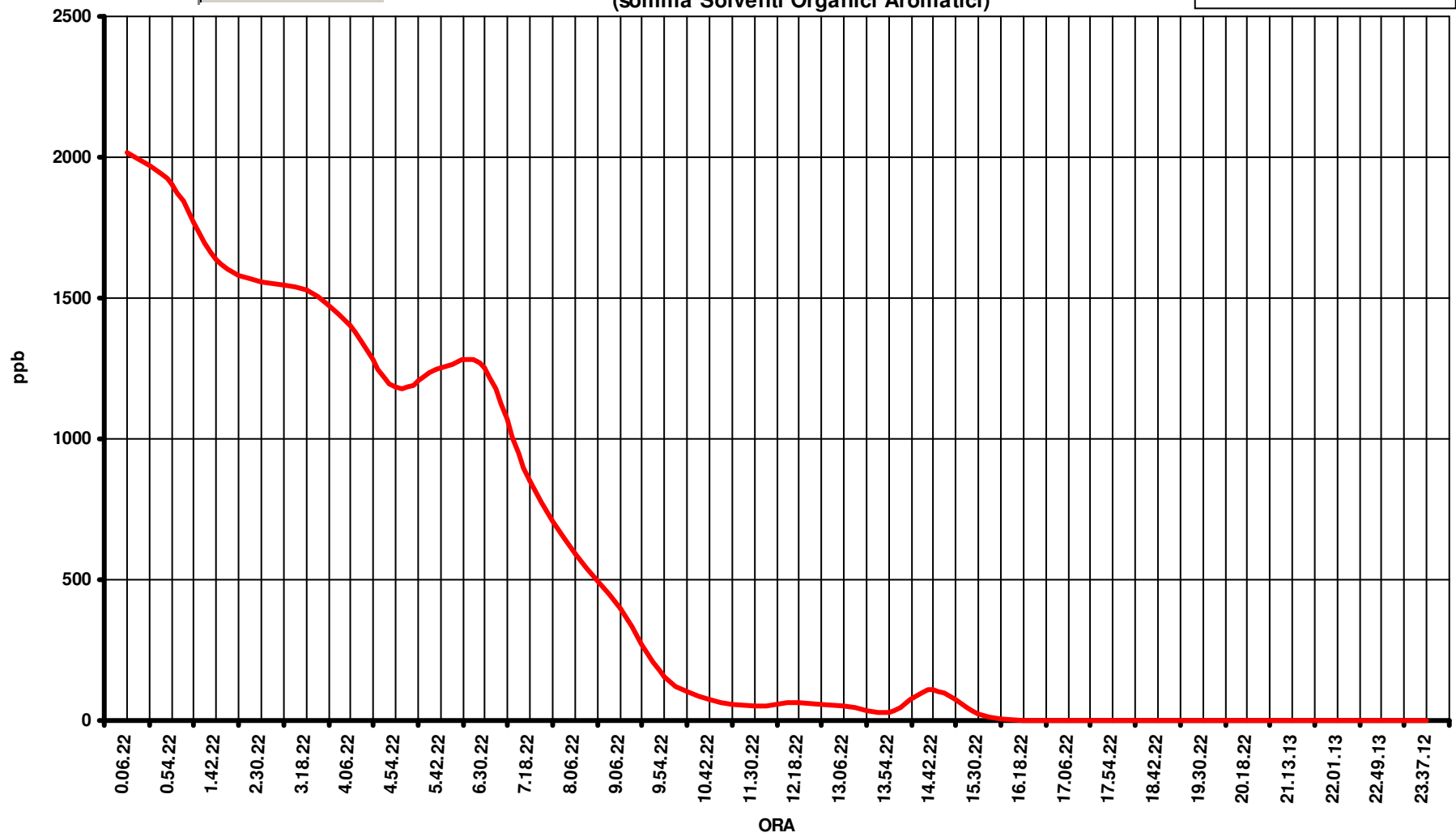


S.O.A. ACIDA  
(somma Solventi Organici Aromatici)

DATA

15/08/2003

Valore

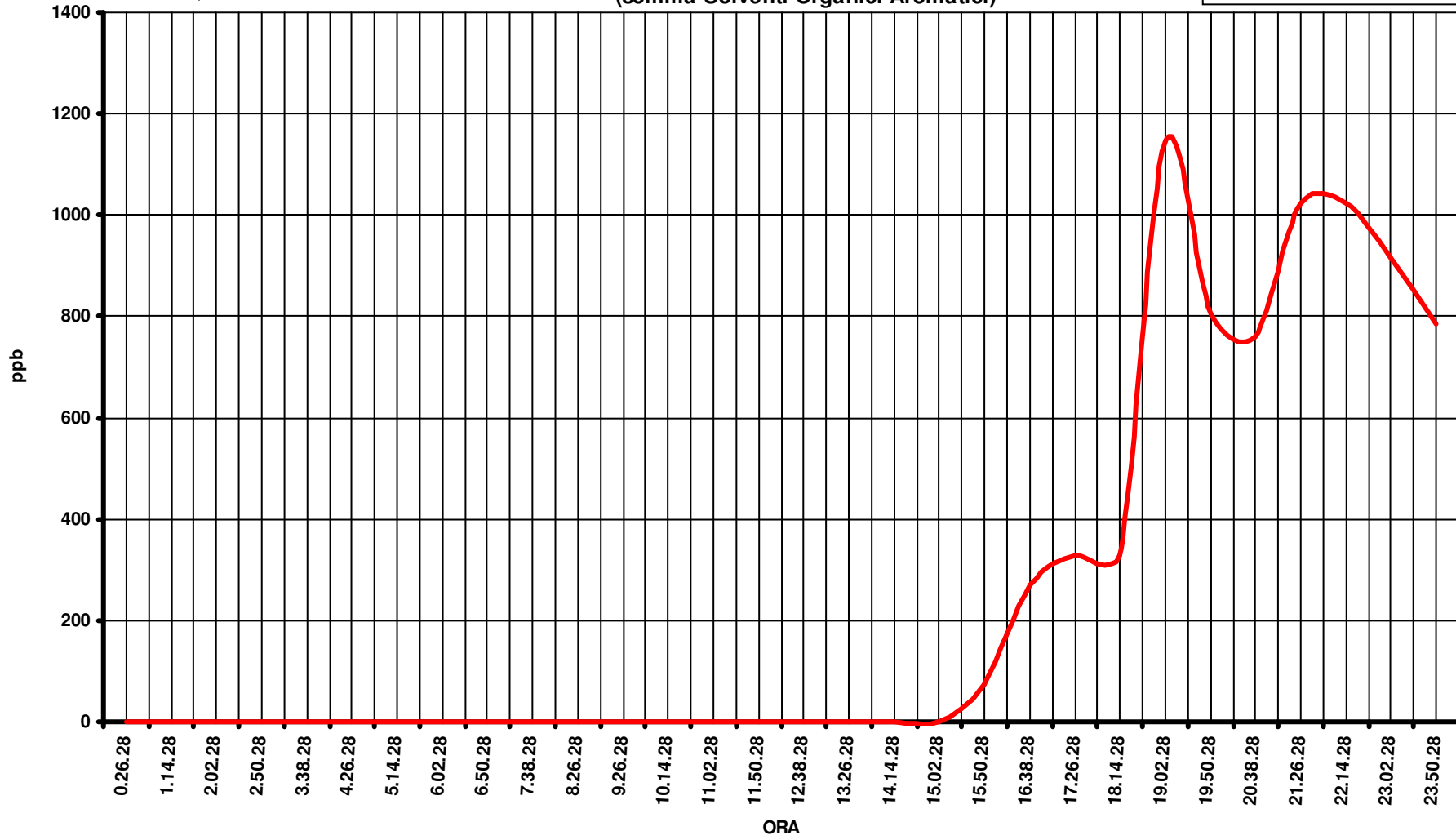


DATA

16/06/2003

**S.O.A. ACIDA**  
**(somma Solventi Organici Aromatici)**

— Valore

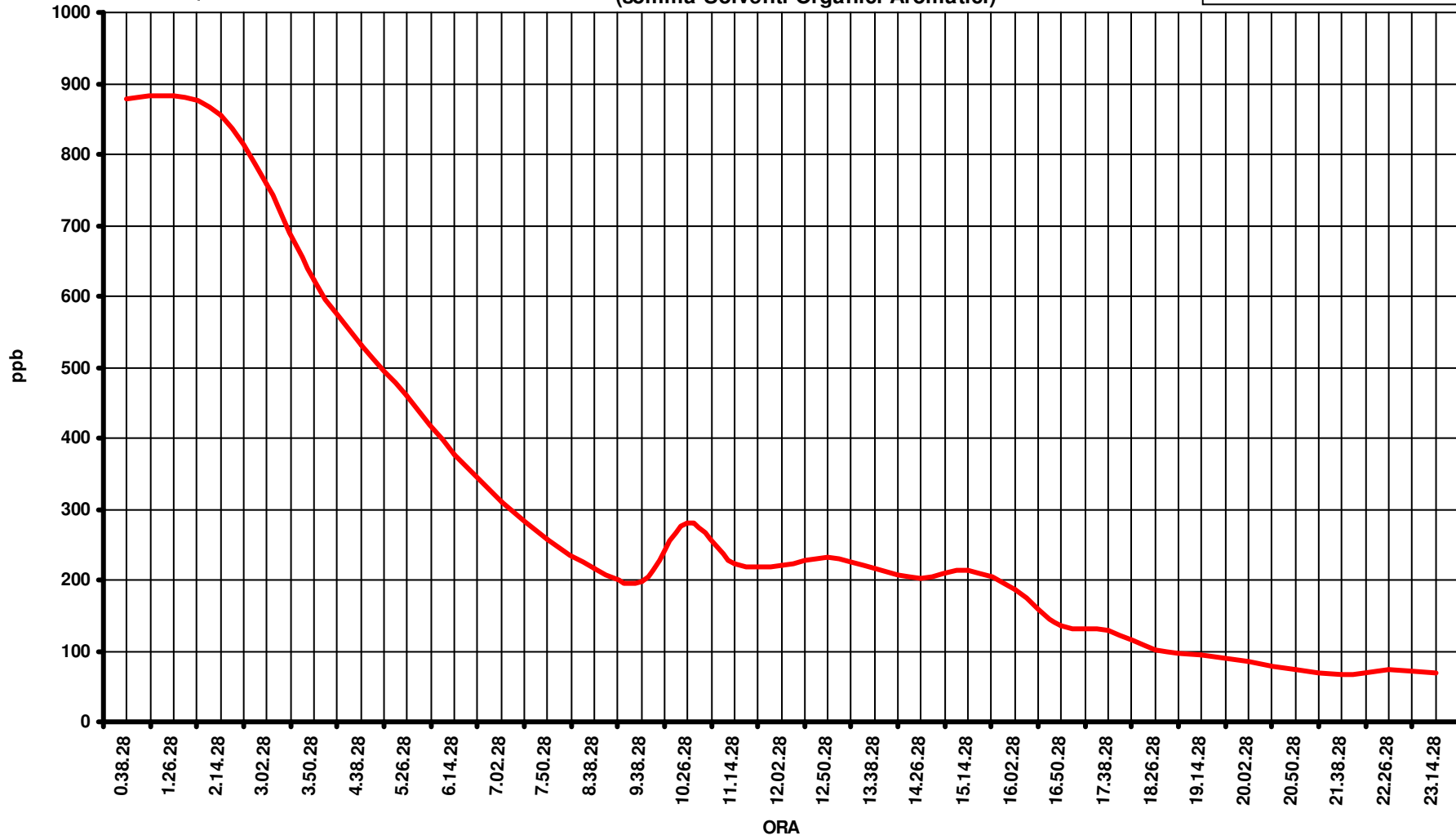


DATA

17/06/2003

### S.O.A. ACIDA (somma Solventi Organici Aromatici)

— Valore

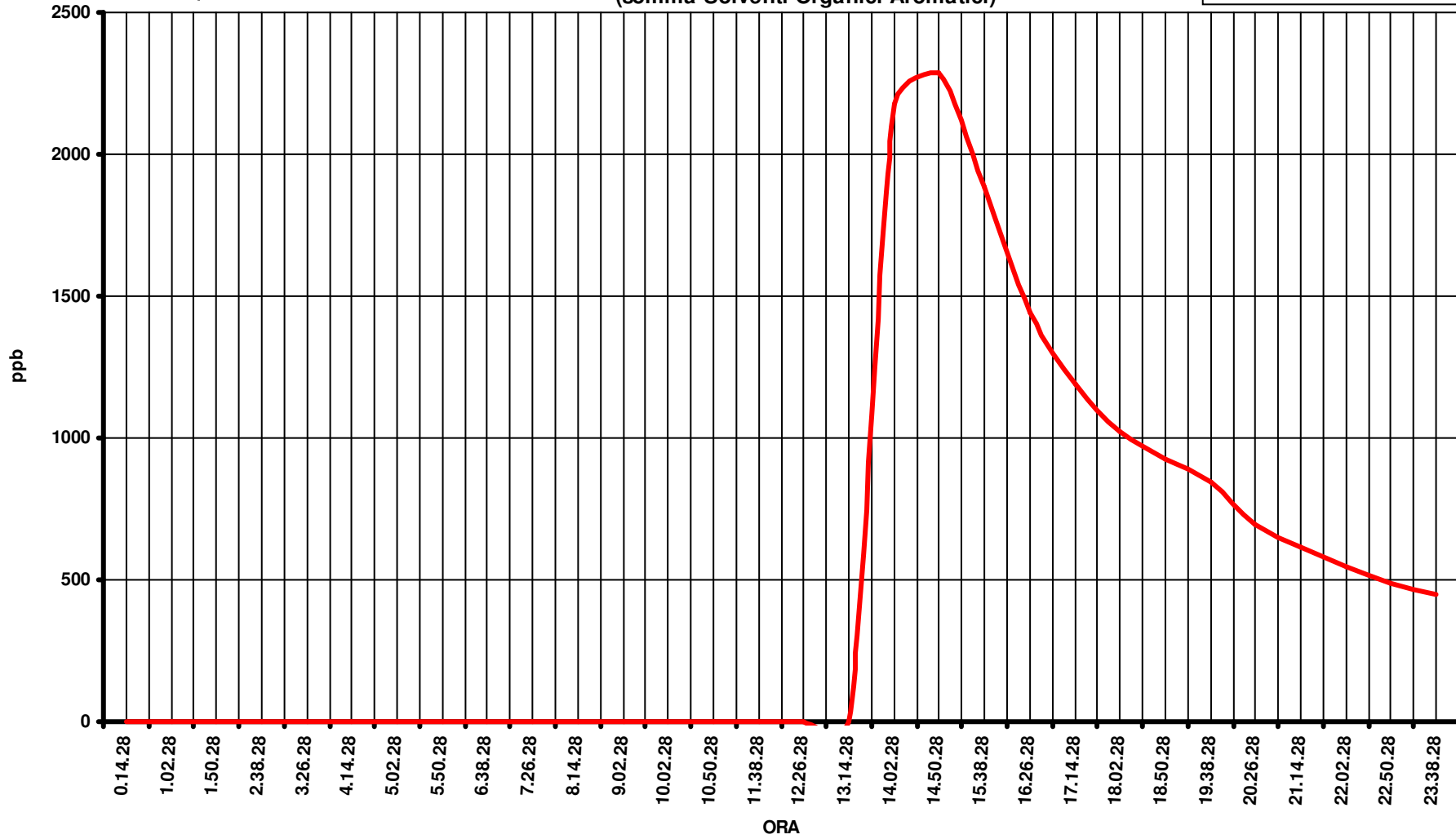


DATA

23/06/2003

### S.O.A. ACIDA (somma Solventi Organici Aromatici)

— Valore

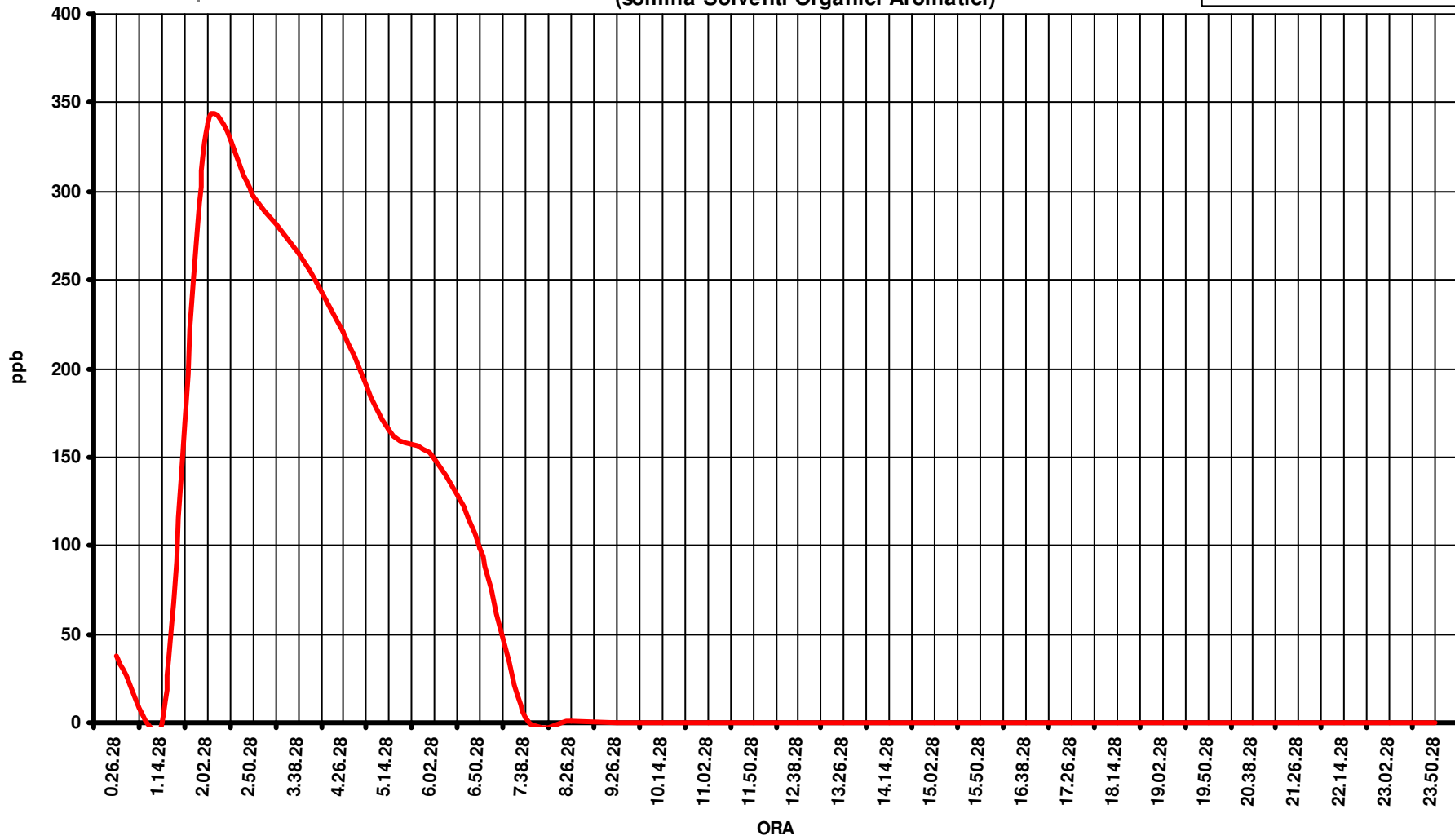


S.O.A. ACIDA  
(somma Solventi Organici Aromatici)

DATA

24/06/2003

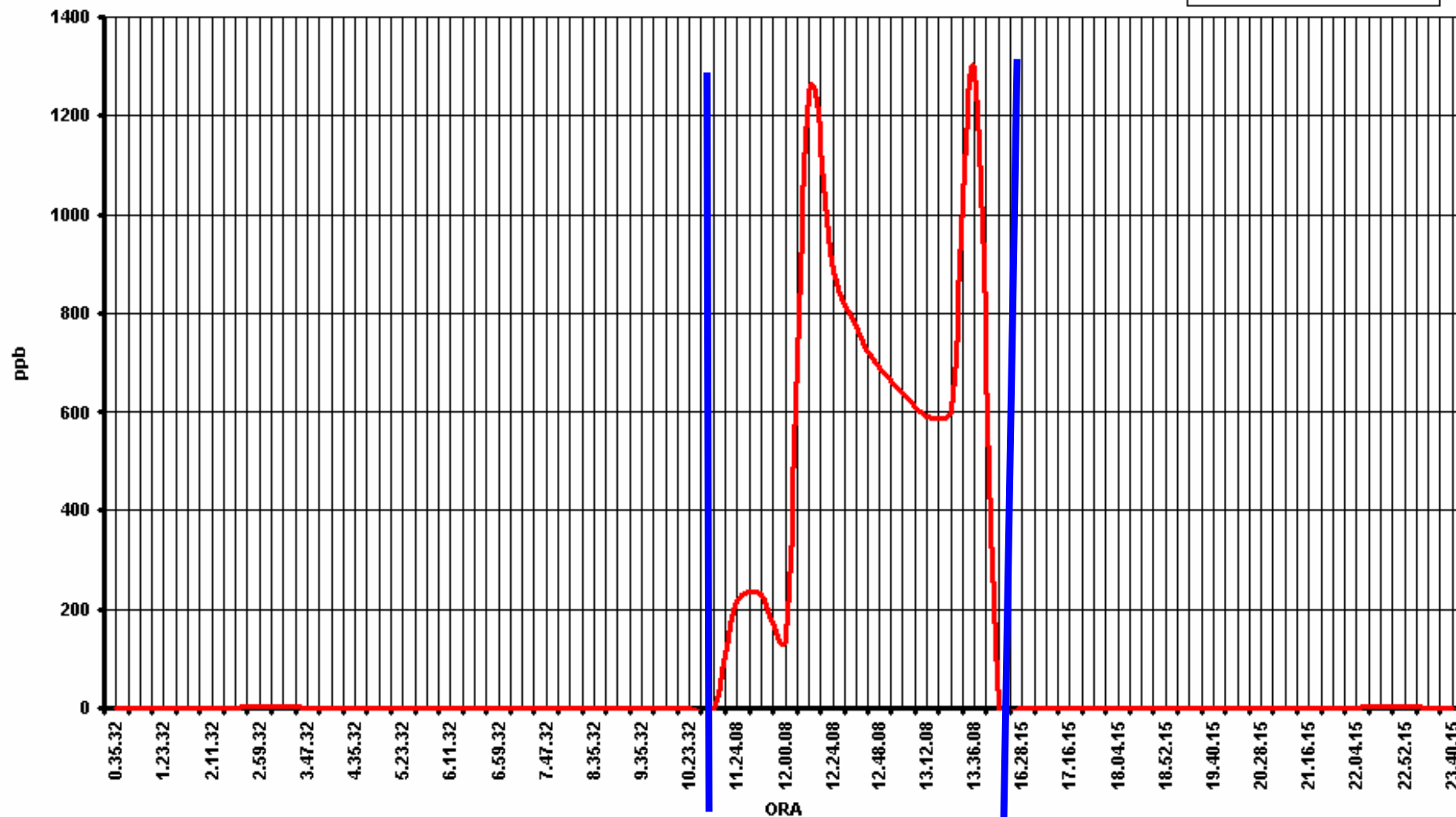
Valore





S.O.A. PUNTO P1  
(somma Solventi Organici Aromatici)

Data: 04/03/2008

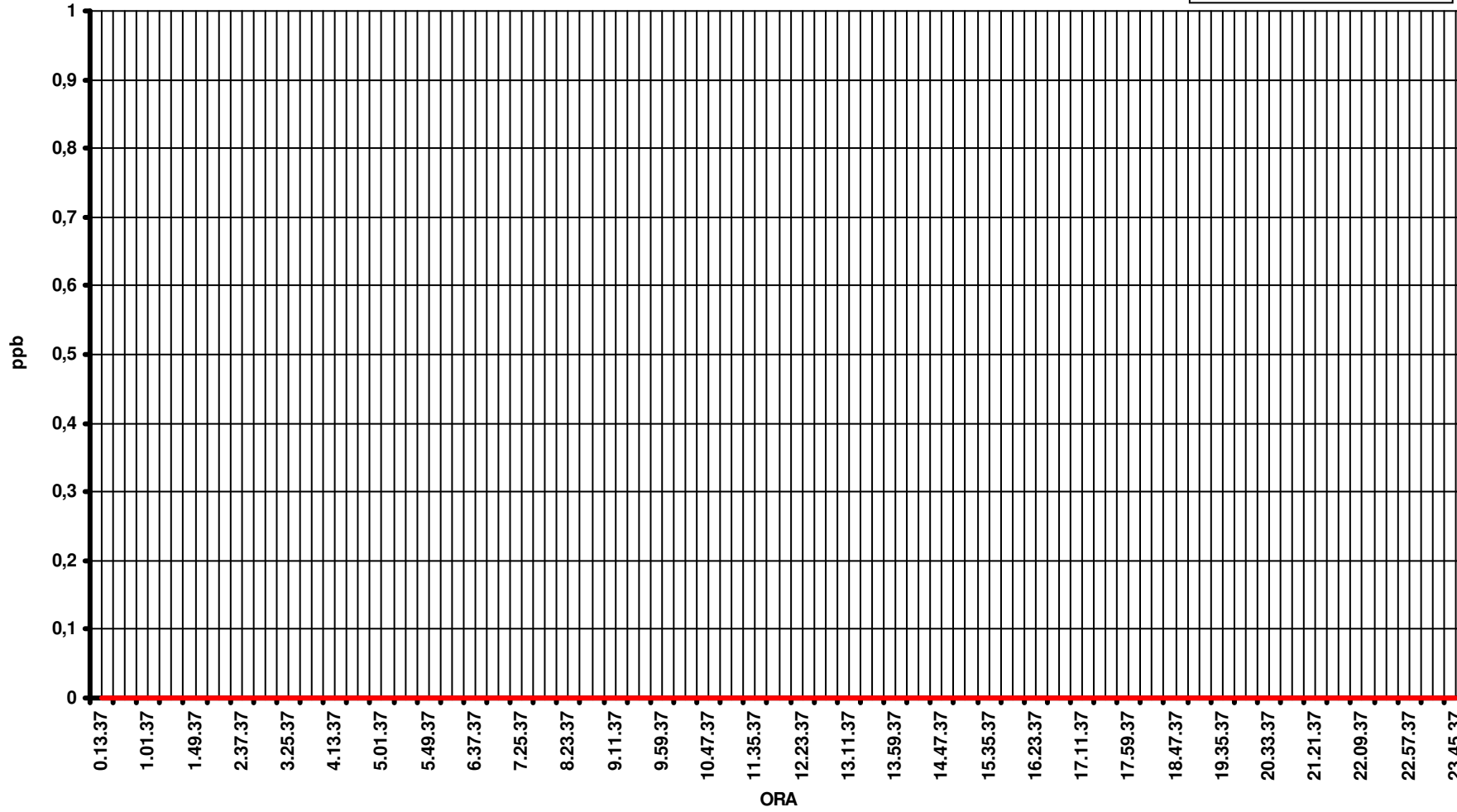


Anomalia Gas Cromatografo

S.O.A PUNTO R1  
(somma Solventi Organici Aromatici)

Data: 04/03/2003

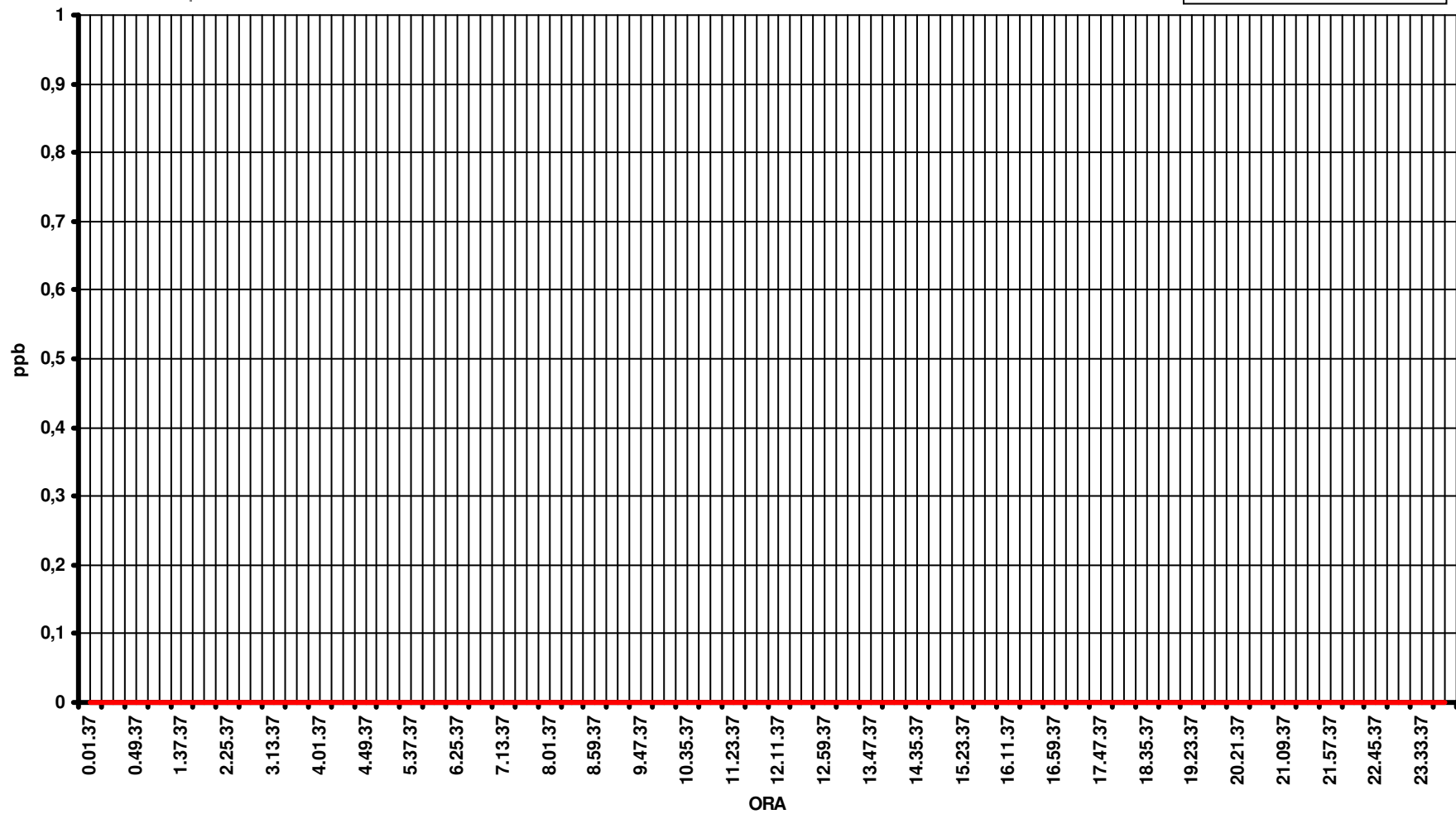
valore



S.O.A PUNTO R2  
(somma Solventi Organici Aromatici)

Data: 04/03/2003

— valore

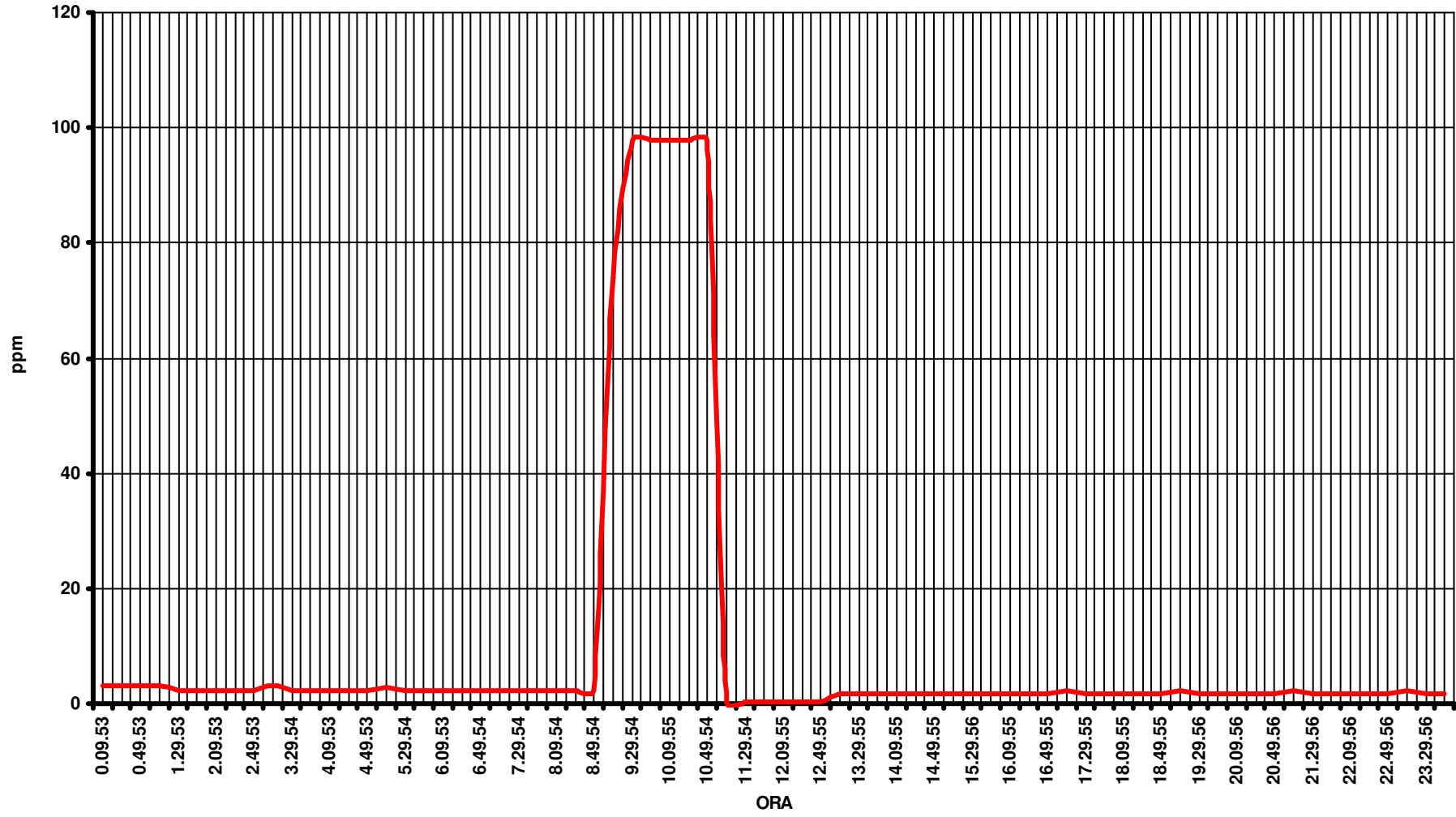


Data

14/02/03

### TOC USCITA BIOLOGICO

Value

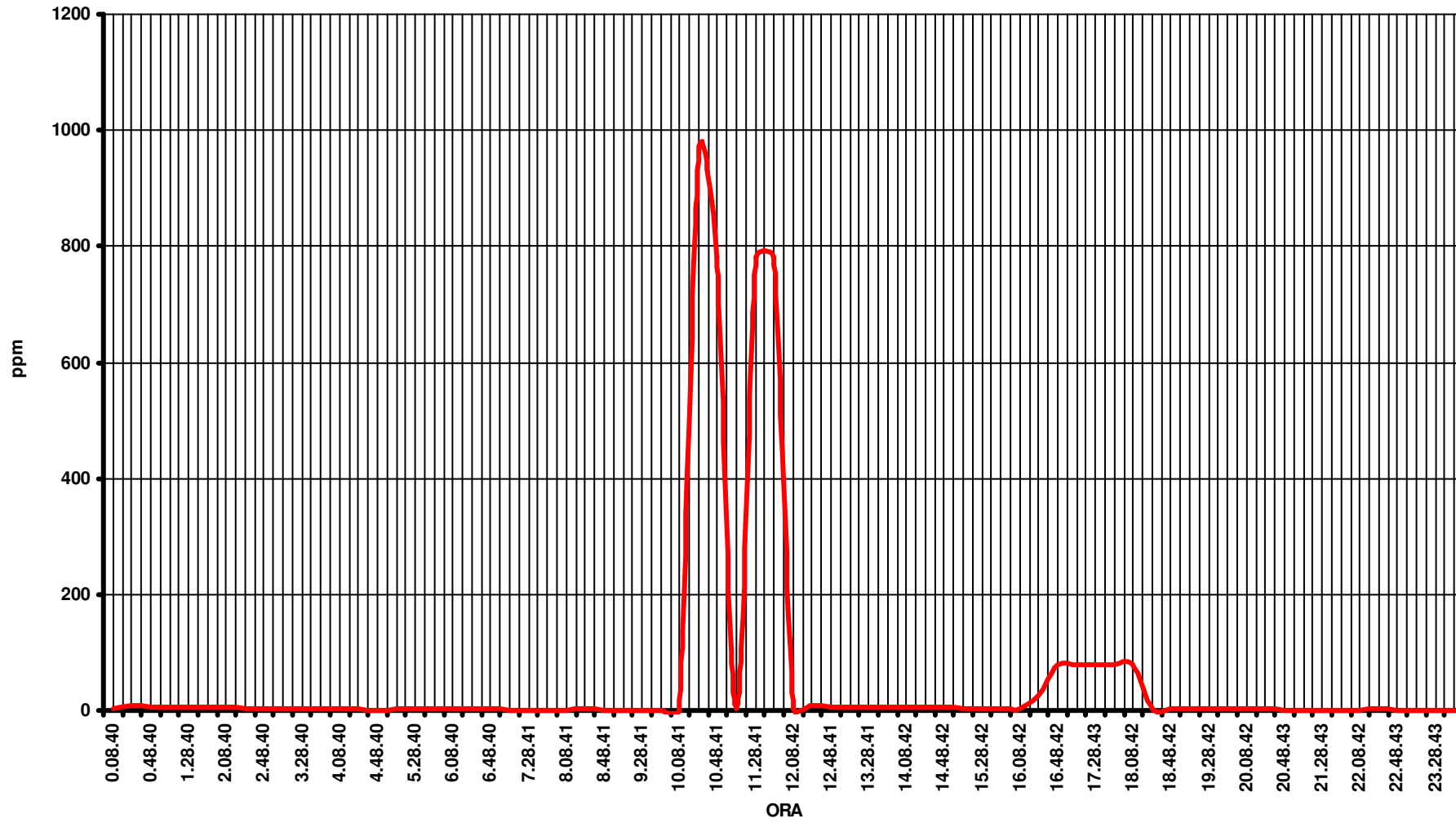


Data

23/06/03

# TOC USCITA BIOLOGICO

Value



Data

13/02/03

### TOC USCITA BIOLOGICO

Value

