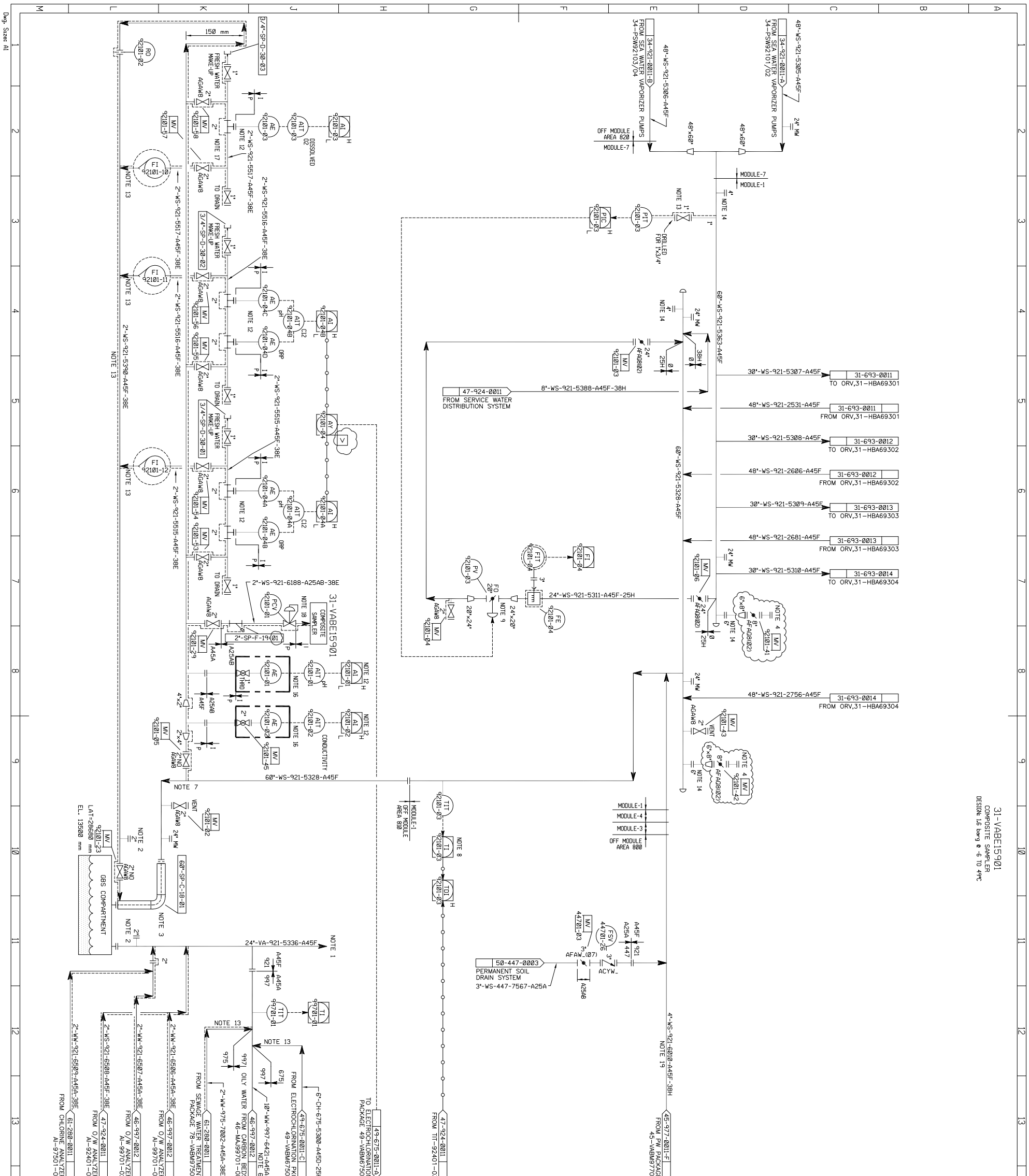


APPENDICE B

**LOCALIZZAZIONE DEI PUNTI DI CAMPIONAMENTO
SUGLI SCARICHI SP1, SP2 E SP3**



31-VABEL15901
COMPOSITE SAMPLER
DESIGN 1.8 bar g @ 6 TO 49°C

CONFIDENTIAL - RESTRICTED USE

THIS DOCUMENT IS THE PROPERTY OF THE COMPANY AND CONTAINS CONFIDENTIAL, PROPRIETARY INFORMATION WHICH MUST NOT BE MADE AVAILABLE NOR DISCLOSED TO OR DISCUSSED WITH ANYONE OUTSIDE OF THE COMPANY. ITS DIVISIONS AND WHOLLY-OWNED AFFILIATES NOR USED FOR ANY PURPOSE EXCEPT AS AUTHORIZED BY THE COMPANY UNDER OULEX-COATED AGREEMENTS PERMITTING SUCH DISCLOSURE. THE COMPANY ASSUMES NO LIABILITY FOR DISCLOSURE OF INFORMATION OR SUCH UNAUTHORIZED ANALYSIS, DISCLOSURE, OR REPRODUCTION.

- NOTES:**
1. GAS DETECTOR ON END OF VENT PIPE. DETECTION OF HC GAS CLOSE TO DRWS VENT TO END AT SAFE LOCATION.
 2. ALTERNATE CONNECTION TO RETURN WATER TO GBS COMPARTMENT.
 3. TRANSITION PIECE FROM 89" PIPE TO 2482 mm OD CIRCULAR.
 4. COMPRESSOR LINE FOR FUTURE HIGH PRESSURE MOBBE.
 5. DELETED.
 6. FREE DRAINING TO THE 24" VENT STACK.
 7. LOCATE SAMPLING LOOP TAKEOFF AT HIGHEST POINT TO ENSURE CONTINUOUS FLOW.
 8. DIFFERENTIAL TEMPERATURE BETWEEN IIT-92401-03 MINUS IIT-92101-03 SHOULD NOT EXCEED 4.6°C.
 9. MAINTAIN MINIMUM FLOW FOR FREEZE PROTECTION.
 10. DELETED.
 11. DELETED.
 12. FOR ENVIRONMENTAL MONITORING.
 13. INSULATE AND TRACE UP TO THE POINT LINE IS FREELY DRAINING.
 14. 2-4" AND 2-6" FLANGES PROVIDED FOR COMMISSIONING/START-UP. BOTTOM OF FLOW INDICATOR SHOULD BE 6 O'CLOCK AT THE BOTTOM OF PIPE.
 15. DELETED.
 16. RETRACTABLE PROBE ASSEMBLY.
 17. MOUNT SENSOR ASSEMBLY AT A 45 ANGLE TO THE PIPE INTO THE FLOW.
 18. MINIMUM DISTANCE TO MAIN LINE.
 19. INSULATE UP TO THE POINT LINE IS FREELY DRAINING.

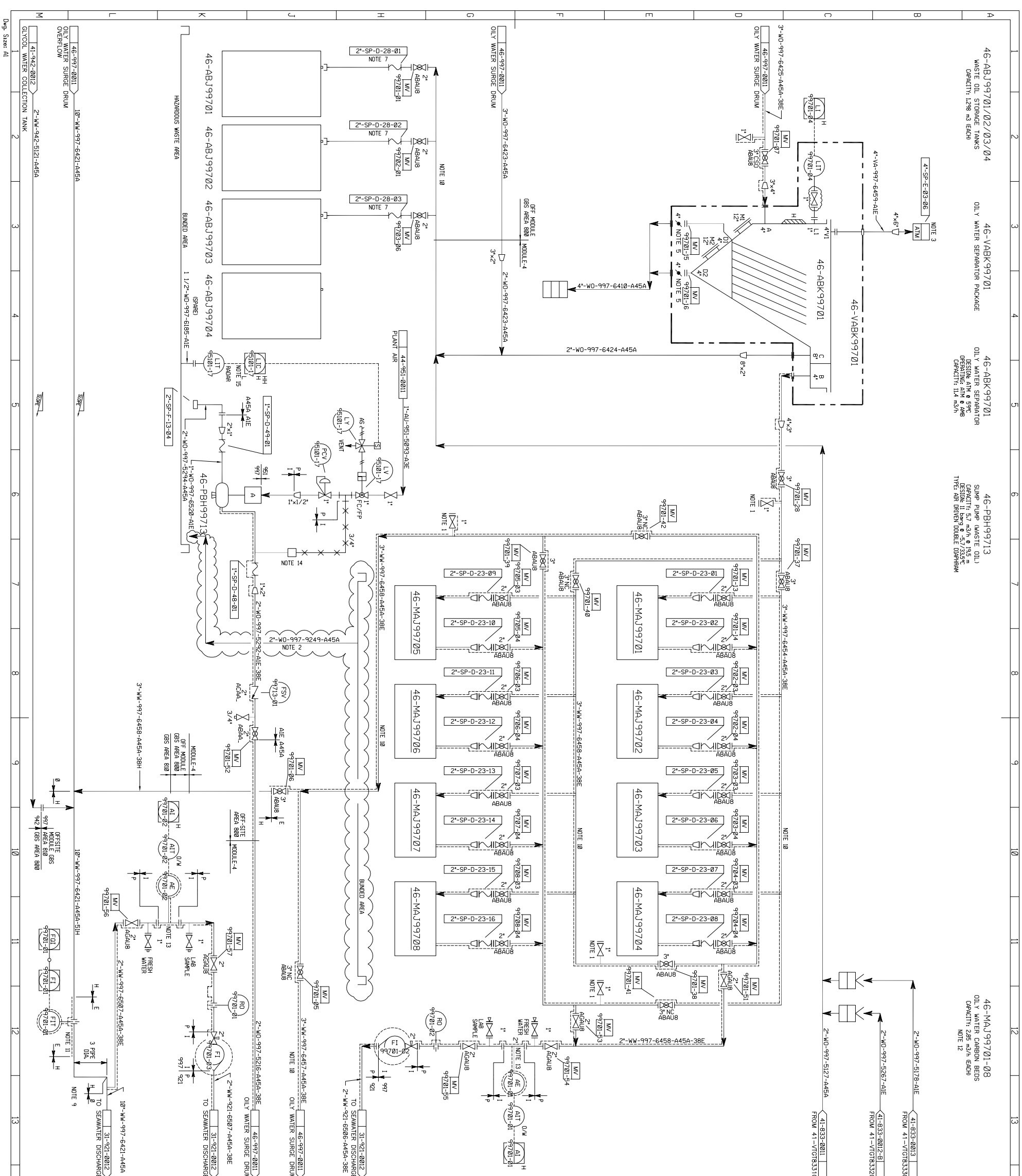
ISSUE NO.	DATE	BY	DESCRIPTION	CHK'D	APP'D	CLIENT APP'D
8	07/25/08	CHL	ISSUE FOR CONSTRUCTION	EH	PM	
7	08/10/07	CHL	ISSUE FOR CONSTRUCTION	JCT	SM	
6	10/20/06	HN	ISSUE FOR CONSTRUCTION	JCT	SM	
5	08/18/06	HN	ISSUE FOR CONSTRUCTION	JCT	SM	
4	12/05/05	HN	REV/ISSUE FOR MISC CONSTRUCTION	JCT	EJK	
3	02/10/05	CHL	ISSUE FOR DESIGN	JCT	EJK	
2	08/20/04	AAU	ISSUE FOR DESIGN	SM	EJK	
1	07/28/04	AAU	ISSUE FOR DESIGN	SM	EJK	
0	07/16/04	AAU	ISSUE FOR DESIGN	SM	EJK	

INDEX NO. 34



TERMINALE GNL ADRIATICO S.R.L.
PIPING & INSTRUMENT DIAGRAM
SEAWATER SUPPLY/RETURN SYSTEM

DRAWING NO.	ITAT - AKE - 31 - PD - 921 - 00 - 0012
DRAWN BY	AAU
DATE	06/02/04
SCALE	NONE
CHK'D	APP'D
REV. NO.	8



CONFIDENTIAL - RESTRICTED USE

THIS DOCUMENT IS THE PROPERTY OF THE COMPANY AND CONTAINS CONFIDENTIAL, PROPRIETARY INFORMATION WHICH MUST NOT BE MADE AVAILABLE NOR DISCLOSED TO OR DISCUSSED WITH ANYONE OUTSIDE OF THE COMPANY. ITS DIVISIONS AND WHOLLY OWNED AFFILIATES MAY USE FOR ANY PURPOSE EXCEPT AS AUTHORIZED BY THE COMPANY UNDER OIL-FIELD RECORDS AGREEMENTS PERTAINING TO SUCH INFORMATION. SUCH INFORMATION IS NOT TO BE DISCLOSED OR DISSEMINATED TO ANY OTHER PERSON WITHOUT THE WRITTEN AUTHORIZATION OF THE COMPANY.

- NOTES:**
1. SAMPLE POINT.
 2. LINE TO BE FREE DRAINING.
 3. VENT TO SAFE LOCATION. VENT TO BE INVERTED WITH 3" BIRD SCREEN MESH.
 4. DELETED.
 5. PROVIDE ADEQUATE CLEARANCE FOR REMOVAL OF SLUDGE VIA BARRELS.
 6. DELETED.
 7. FLEXIBLE HOSE AND QUICK CONNECT COUPLINGS.
 8. DELETED.
 9. LIQUID SEAL DOWNSTREAM OF INSTRUMENTS.
 10. INSULATE AND TRACE UNTIL FREE DRAINS.
 11. INSULATE FOR FREEZE PROTECTION TO SAME ELEVATION AS 1 WETER BOTH SIDES OF FIT.
 12. CARBON BEDS WILL BE SUPPLIED BY COMPANY.
 13. MOUNT SENSOR SPOOL PIECE IN THE VERTICAL. KEEP LIQUID FULL.
 14. SURE SUPPRESSOR AND AIR TUBING SUPPLIED BY VENDOR.
 15. OPEN LV-95101-17 ON HIGH LEVEL. CLOSE ON LOW LEVEL. ALARM AT HIGH-HIGH LEVEL.

ISSUE	DATE	BY	DESCRIPTION	CHK'D	AK	CLIENT APP'D
1	07/28/04	AAU	ISSUE FOR DESIGN	SM	EJK	
2	08/20/04	AAU	ISSUE FOR DESIGN	SM	EJK	
3	02/10/05	AAU	ISSUE FOR DESIGN	SM	EJK	
4	12/05/05	HN	PRO/ISSUE FOR MISC CONSTRUCTION	JCT	EJK	
5	07/14/06	HN	ISSUE FOR CONSTRUCTION	JCT	EJK	
6	10/20/06	HN	ISSUE FOR CONSTRUCTION	EH	SM	
7	08/10/07	CHL	ISSUE FOR CONSTRUCTION	EH	PM	
8	07/25/08	CHL	ISSUE FOR CONSTRUCTION	EH	PM	

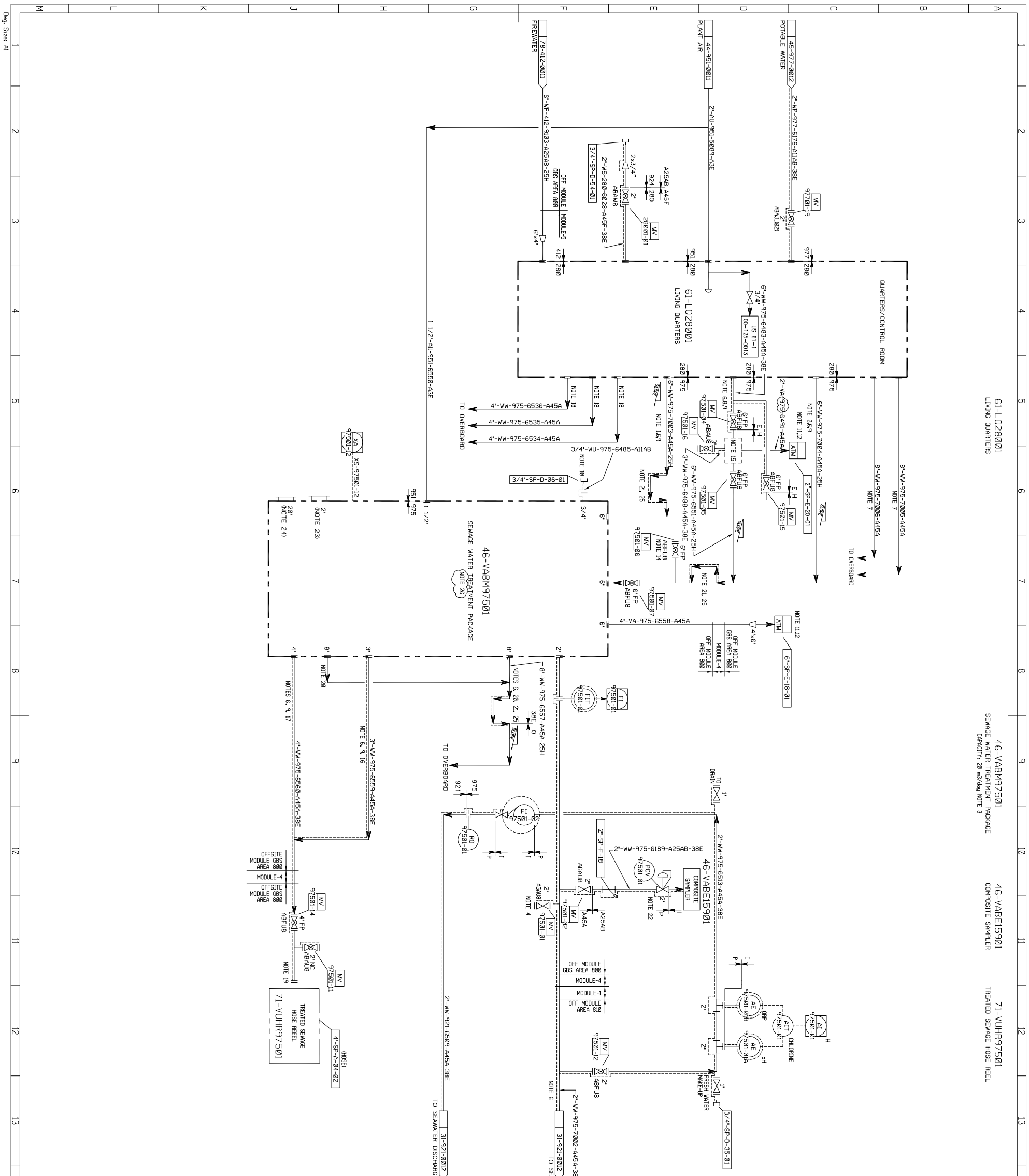
INDEX NO. 98

AKER KERNER
Adriatico LNG

TERMINALE GNL ADRIATICO S.R.L.

PIPING & INSTRUMENT DIAGRAM
OILY WATER TREATMENT SYSTEM

DRAWN BY:	TJF	DATE:	01/13/04	SCALE:	NONE	CHK'D:	AKU
DRAWING NO.:	ITAT - AKE - 46 - PD - 997 - 00 - 0012	REV. NO.:	8				



61-LQ28001 LIVING QUARTERS
 46-VABM97501 SEWAGE WATER TREATMENT PACKAGE CAPACITY: 20 m³/day NOTE 3
 46-VABE15901 COMPOSITE SAMPLER
 71-VIHR97501 TREATED SEWAGE HOSE REEL

CONFIDENTIAL - RESTRICTED USE

THIS DOCUMENT IS THE PROPERTY OF THE COMPANY AND CONTAINS CONFIDENTIAL, PROPRIETARY INFORMATION WHICH MUST NOT BE MADE AVAILABLE NOR DISCLOSED TO OR DISCUSSED WITH ANYONE OUTSIDE OF THE COMPANY. ITS DIVISIONS AND WHOLLY-OWNED AFFILIATES NOR USED FOR ANY PURPOSE EXCEPT AS AUTHORIZED BY THE COMPANY UNDER OIL-EXECUTED AGREEMENTS PERMITTING SUCH DISCLOSURE. ANY UNAUTHORIZED DISCLOSURE, REPRODUCTION, OR DISSEMINATION OF SUCH UNAUTHORIZED MATERIALS, DISCLOSURE, OR DISSEMINATION IS PROHIBITED.

- NOTES:**
1. BLACK WATER FROM URINALS/TOILETS.
 2. GREY WATER FROM WASH DRAINS.
 3. SEWAGE TREATMENT PACKAGE TO BE SIZED FOR PEAK DEMAND OF 100 PEOPLE ON TERMINAL.
 4. SAMPLE POINT.
 5. DELETED.
 6. INSULATE AND TRACE ABOVE GROUND LINE UNTIL LINE FREELY DRAINS.
 7. HELDECK ROOF DRAIN PIPING GRAVITY FLOW.
 8. GREY WATER FROM GALLEY.
 9. PIPING TO BE DESIGNED FOR FLOW OF SEWAGE AND/OR SLUDGE WITH CLEANOUT CAPABILITY.
 10. HOSE CONNECTION FOR FRESH WATER FROM UTILITY STATION TO BE PROVIDED BY VENDOR IN SERVICE.
 11. VENT TO SAFE LOCATION. LOCATE VENT TO MINIMIZE ODOUR TO OCCUPIED AREAS.
 12. VENT TO BE INVERTED TO PREVENT WATER INGRESS AND HAVE BRO SCREEN MESH.
 13. CONNECTION FOR FLUSHING LINE WITH FRESH WATER AFTER USE.
 14. CONNECTION FOR ALTERNATE GREY WATER DISCHARGE LOCATION.
 15. GREASE TRAP PROVIDED BY LO VENDOR. ELECTRIC TRACED.
 16. NORMAL SLUDGE PUMP-OUT LINE.
 17. HOLDING TANK PUMP-OUT WHEN REQUIRED (NOT NORMAL OPERATION).
 18. LIVING QUARTERS ROOF DRAIN PIPING GRAVITY FLOW.
 19. TO SUPPLY BOAT LOADING. USE DRY BREAK DISCONNECTOR LOCATED AT BOAT LOADING.
 20. EMERGENCY OVERFLOW FROM STORAGE TANKS.
 21. FILL P-TRAP WITH CLEAN WATER FOR ODOUR CONTROL.
 22. MINIMUM DISTANCE TO MAIN LINE.
 23. WASHING CONNECTION (TYP. 3).
 24. MANHOLE (TYP. 4).
 25. ON THIS LINE TRACE P-TRAP ONLY.
 26. SEE VENDOR PACKAGE FOR DETAILS.

- ITAT-AKZ-46-LD-975-9J-1002A
 ITAT-AKZ-46-LD-975-9J-1002B
 ITAT-AKZ-46-LD-975-9J-1002C
 ITAT-AKZ-46-LD-975-9J-1002D

INDEX NO. 104

ISSUE	DATE	BY	DESCRIPTION	CHK'D	AK	CLIENT
8	07/25/08	CHL	ISSUE FOR CONSTRUCTION	EH	PM	
7	08/02/07	CHL	ISSUE FOR CONSTRUCTION	EH	SM	
6	10/20/05	HN	ISSUE FOR CONSTRUCTION	VJ	SM	
5	08/29/05	HN	ISSUE FOR CONSTRUCTION	JCT	EJK	
4	12/05/05	HN	REV/ISSUE FOR MISC CONSTRUCTION	JCT	EJK	
2	08/20/04	AAU	ISSUE FOR DESIGN	SM	EJK	
1	07/28/04	AAU	ISSUE FOR DESIGN	SM	EJK	
0	07/16/04	AAU	ISSUE FOR DESIGN	SM	EJK	

AKER KVERNER
 Adriatico LNG

TERMINALE GNL ADRIATICO S.R.L.
 PIPING & INSTRUMENT DIAGRAM
 LIVING QUARTERS

DRAWN BY	AAU	DATE	01/04/04	SCALE	NONE	CHK'D	APP'D
DRAWING NO.	ITAT - AKE - 61 - PD - 280 - 00 - 0011	REV. NO.	8				