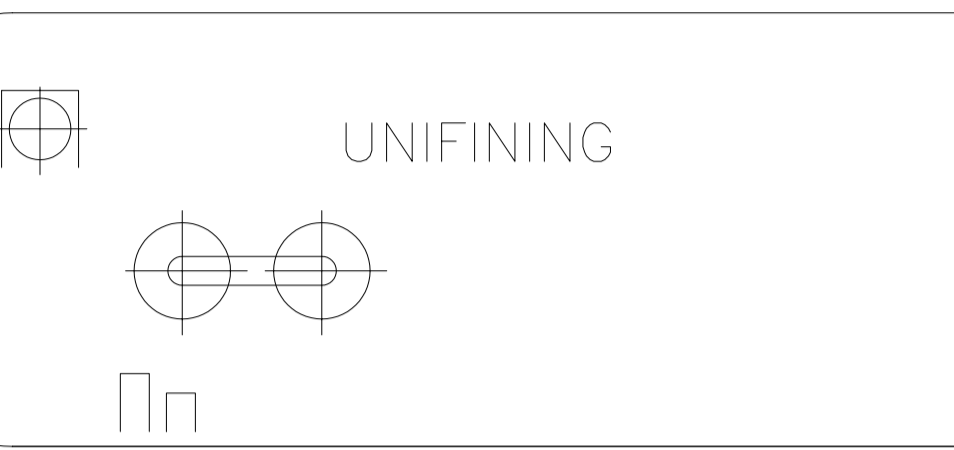
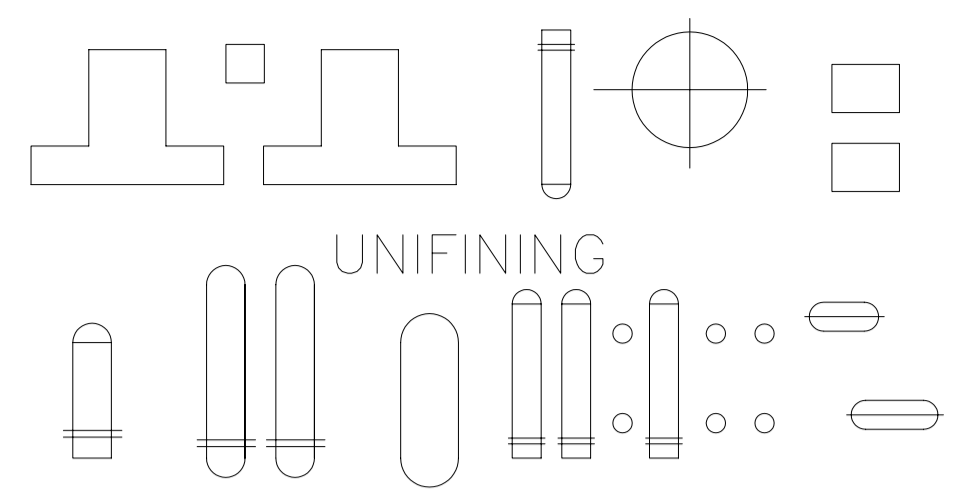


STRADA

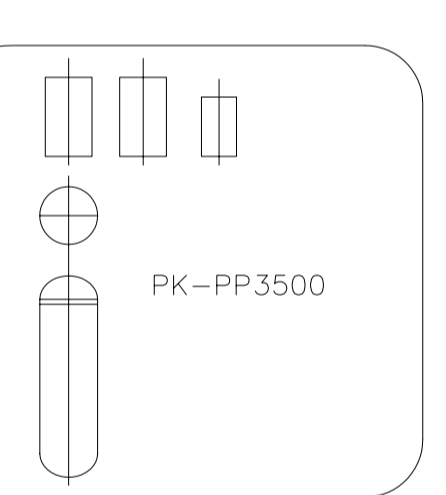
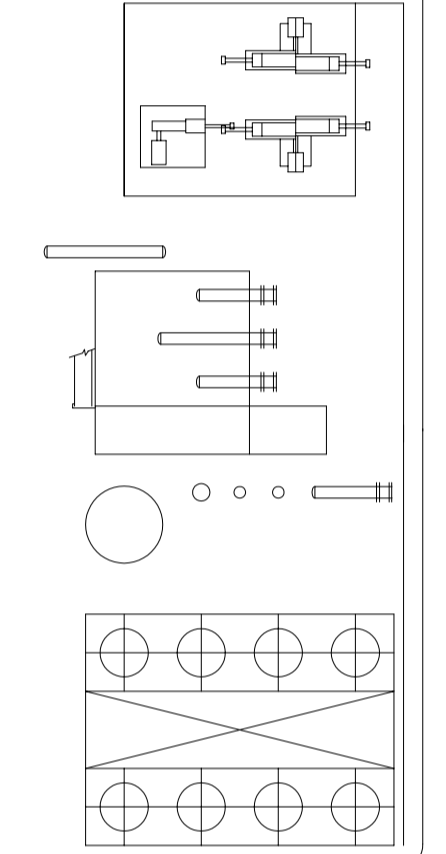
BUNKER BOMBOLE

Legenda

- Sorgenti d'impatto elettromagnetico (380 kV)
- ▨ Fascia di rispetto per il campo magnetico (3 uT)



IDROGENO 2

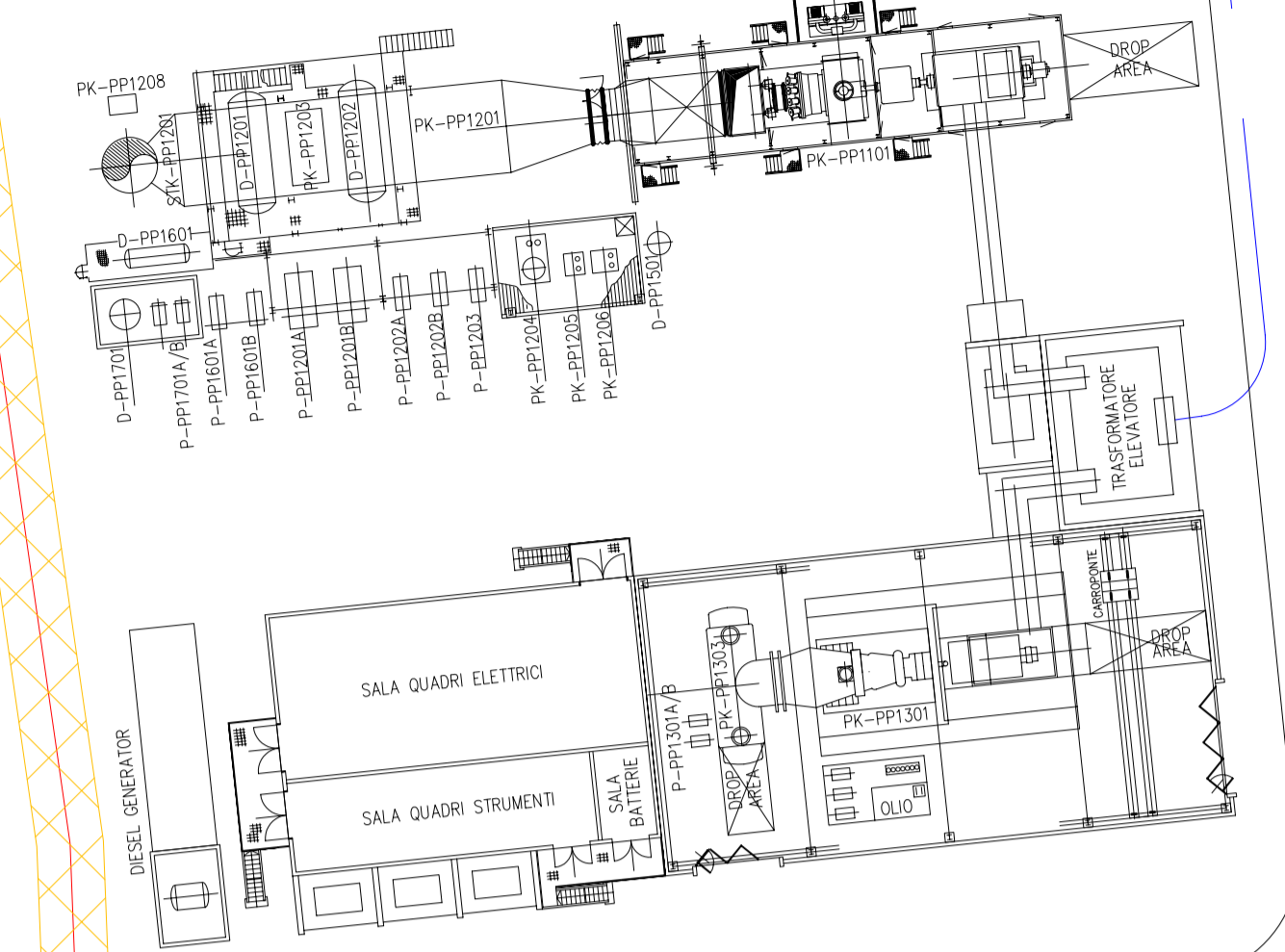
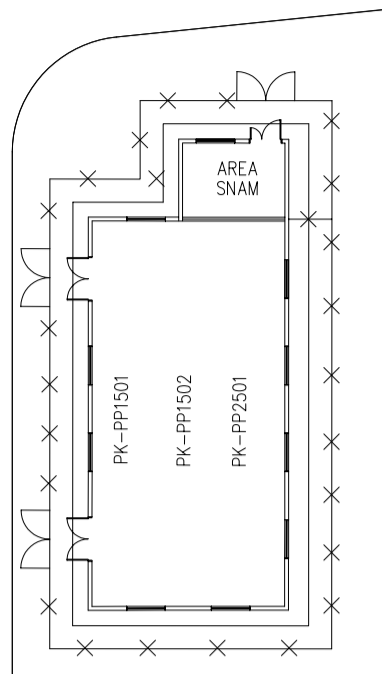


CAB. "U" SALA TEC. "H"

SALA POMPE TERMINALE

TERMINALE A TERRA

RADICE OLEODOTTI



NUOVA STRADA

STRADA ESISTENTE

TK-51 + MC21070

TK-334 + MC28952 TG

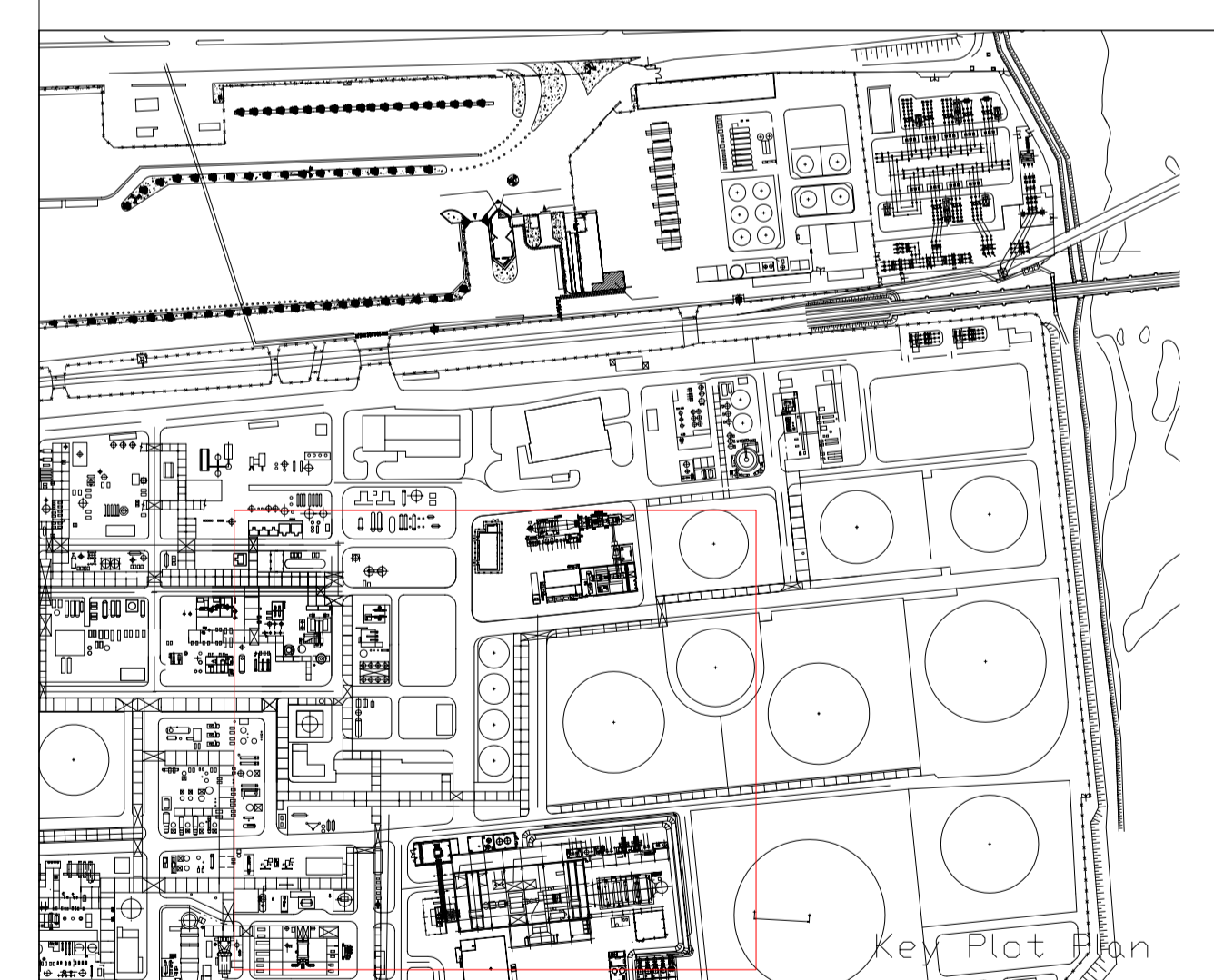
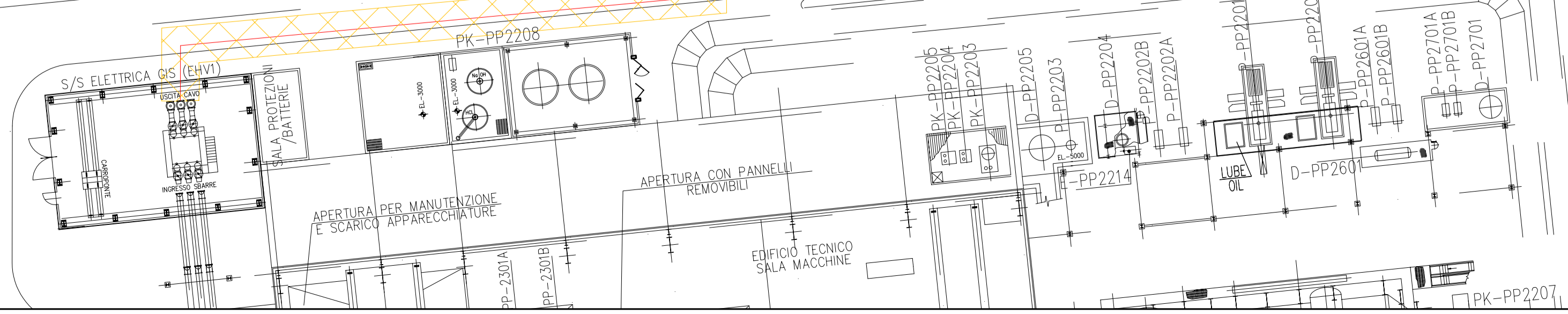
TK-48 + MC34500 TG

TK-149 + MC5366

TK-148 + MC5366

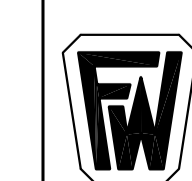
TK-147 + MC5368

TK-146 + MC5361



0	5/1/06	Prima emissione	MDS	MZ	MZ
LETTER	DATE	DESCRIPTION	BY	CHD	APP.

<b>api raffineria di Ancona S.p.A.</b> <b>CENTRALE A CICLO COMBINATO</b> <b>DA 580 Mwe</b>		<b>APPROVED FOR CONSTRUCTION</b>	
Allegato B26 - Planimetria 1/2 Planimetria dello stabilimento con individuazione delle sorgenti d'impatto elettromagnetico		DWG. REV.	DATE
FOSTER WHEELER ITALIANA S.P.A. ENVIRONMENTAL DIVISION		SIGNATURE	
ORDER N° SUPPLIER CONTRACT N° 1-BH-0233A THIS DWG. SUPERSEDED BY SCALE		DWG. N°	REV. 1



THIS DRAWING IS THE PROPERTY OF FOSTER WHEELER ITALIANA S.P.A. AND IS LOANED WITHOUT CONSIDERATION OTHER THAN THE BORROWER'S AGREEMENT THAT IT SHALL NOT BE REPRODUCED, COPIED, LENT OR DISPOSED OF DIRECTLY OR INDIRECTLY, NOR USED FOR ANY PURPOSE OTHER THAN THAT FOR WHICH IT IS SPECIFICALLY FURNISHED. THE APPARATUS SHOWN IN THE DRAWING IS COVERED BY PATENTS.

Filename: