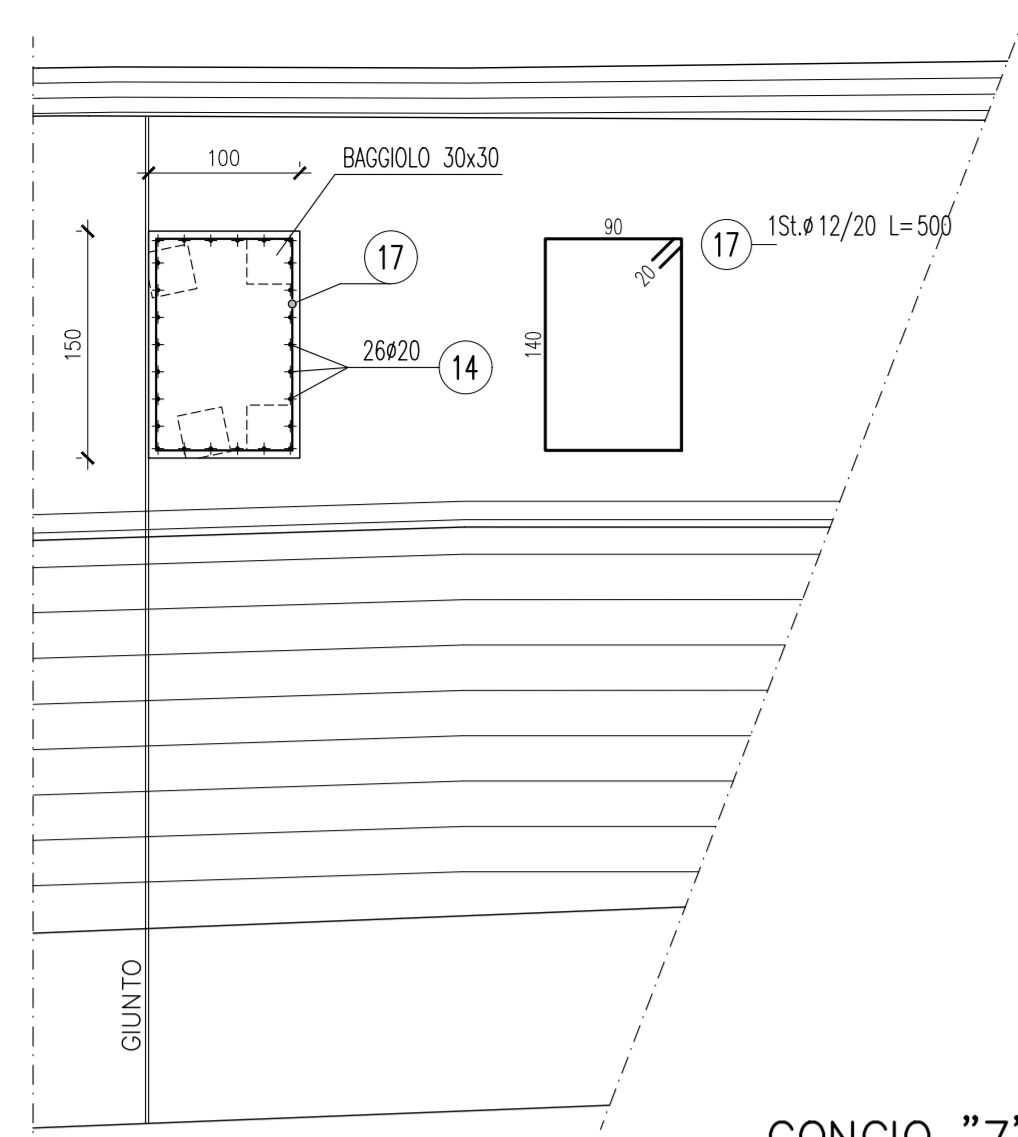
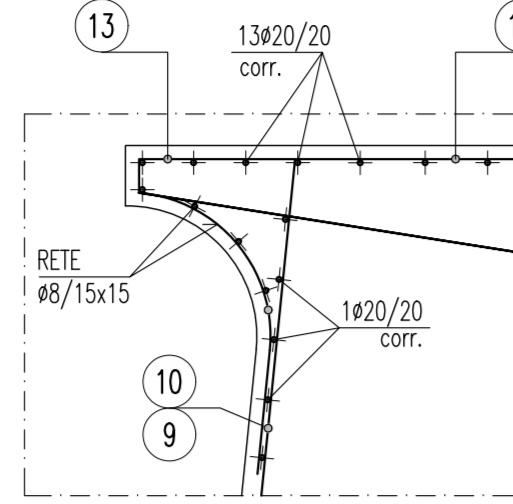


STRALCIO PLANIMETRICO



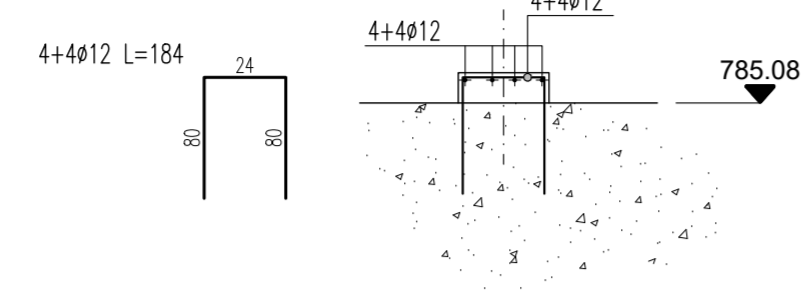
PARTICOLARE "1"

SCALA 1:25

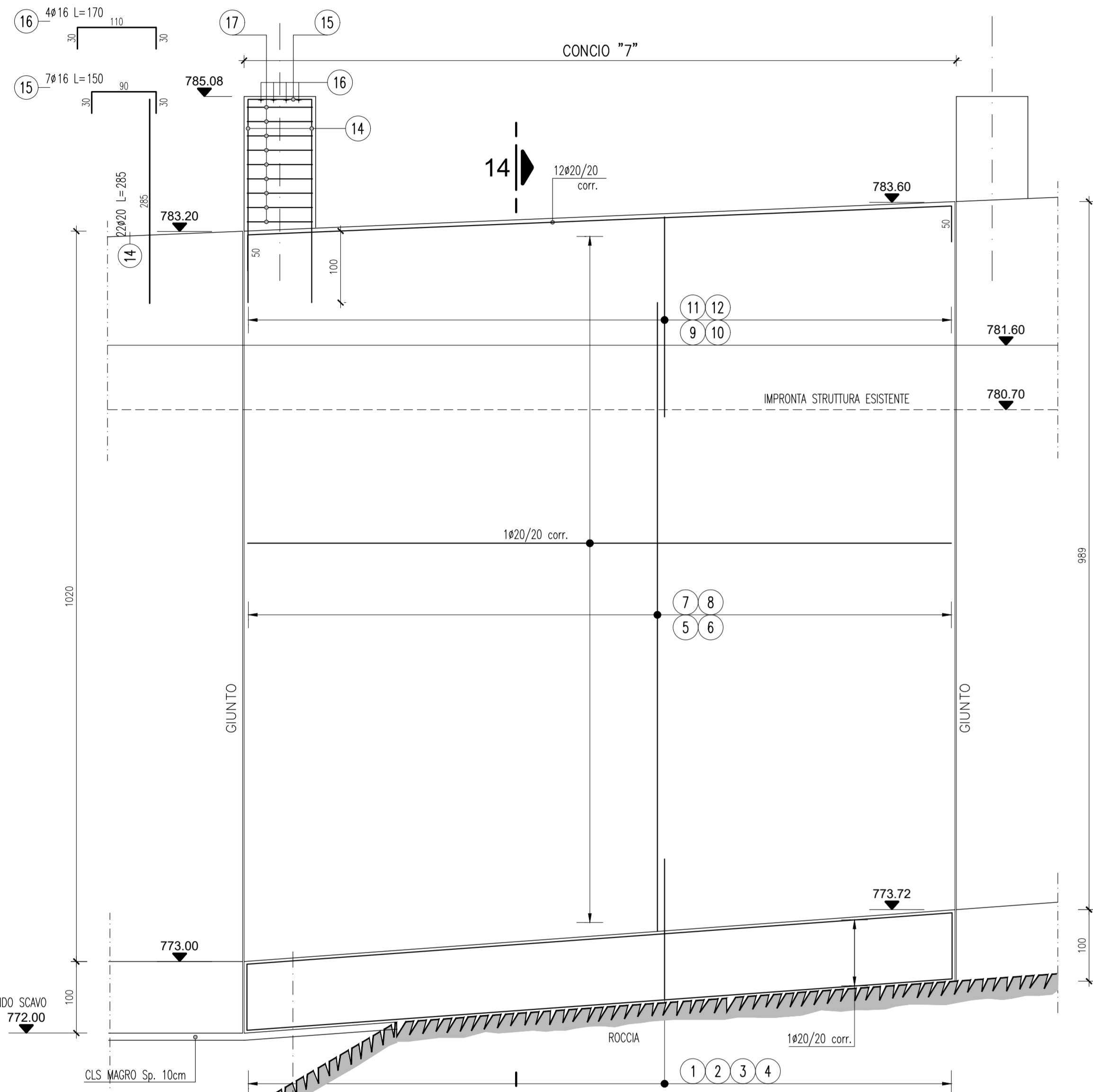


ARMATURA TIP. BAGGIOLO

scala 1:25

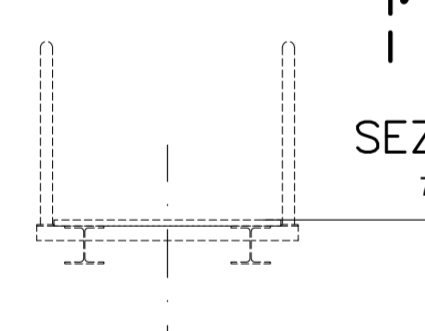


CONCIO "7"
SCALA 1:50



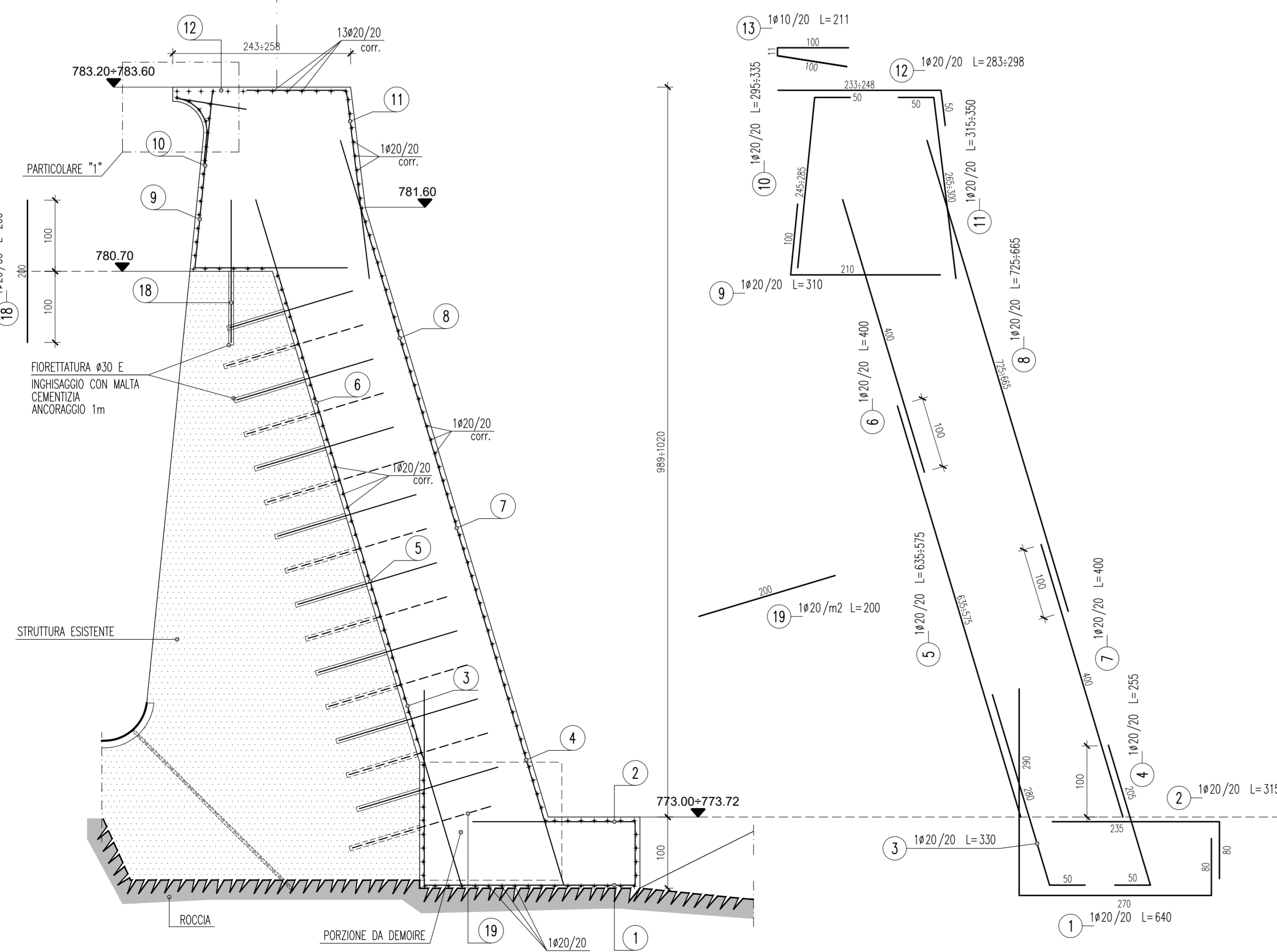
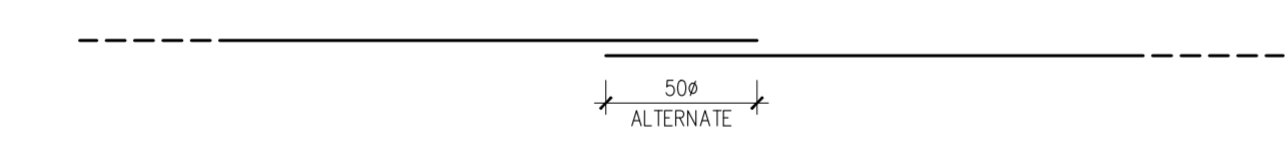
SEZIONE 14-14

SCALA 1:50

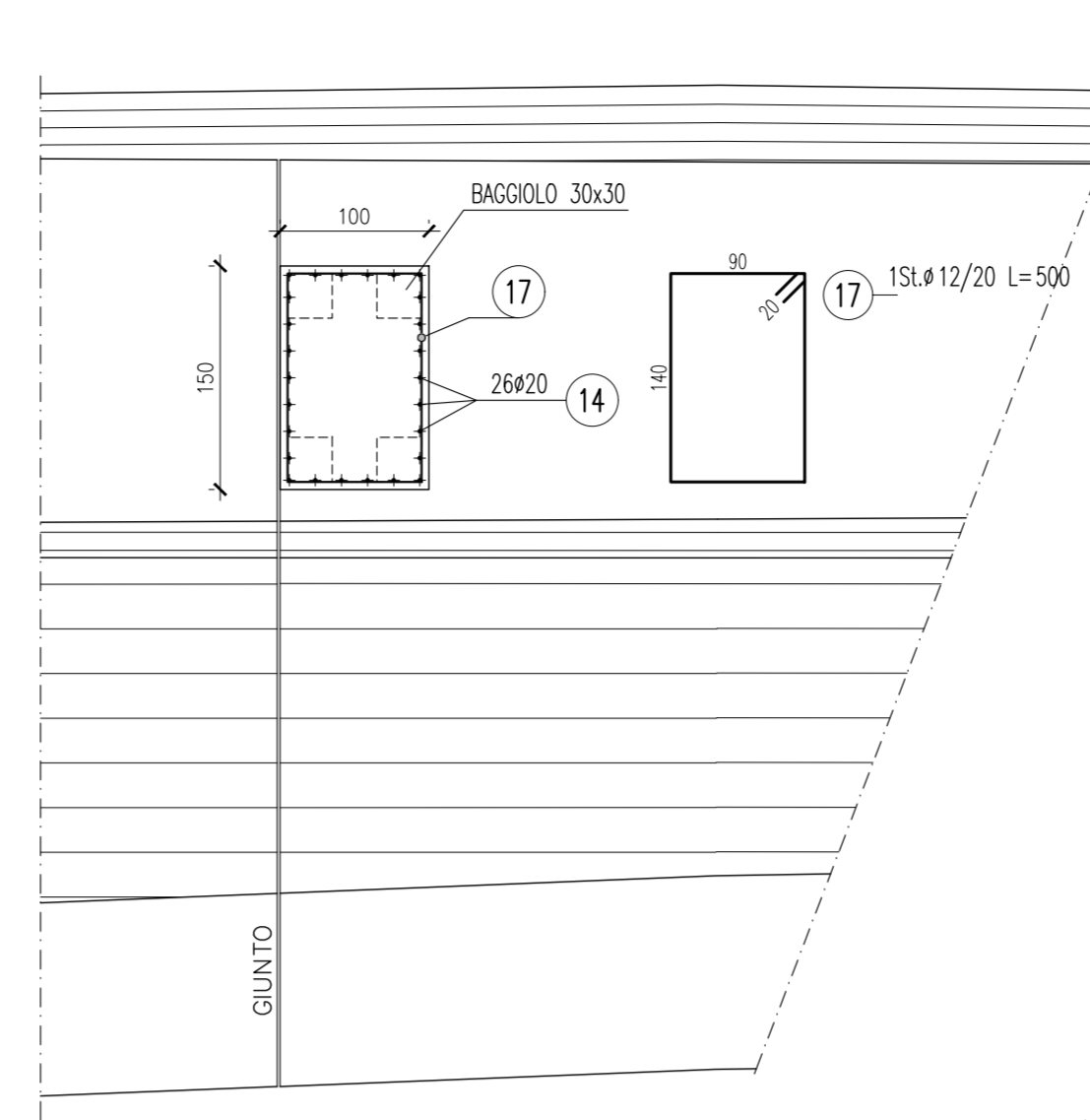


SOVRAPPOSIZIONE ARMATURA CORRENTE

SCALA 1:50

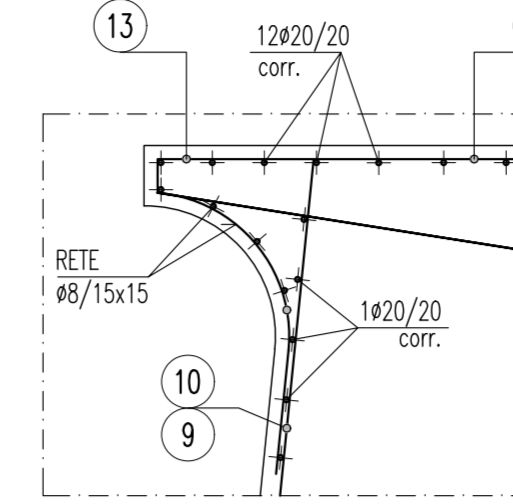


STRALCIO PLANIMETRICO



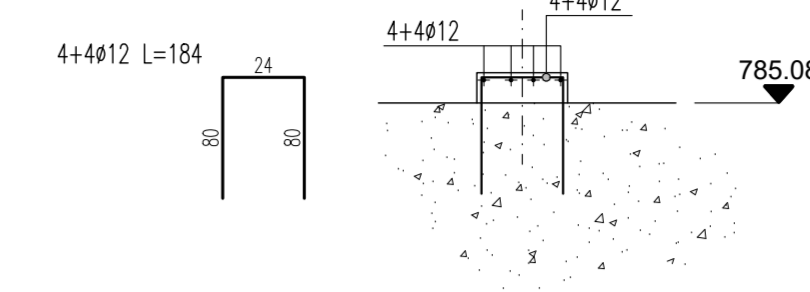
PARTICOLARE "1"

SCALA 1:25

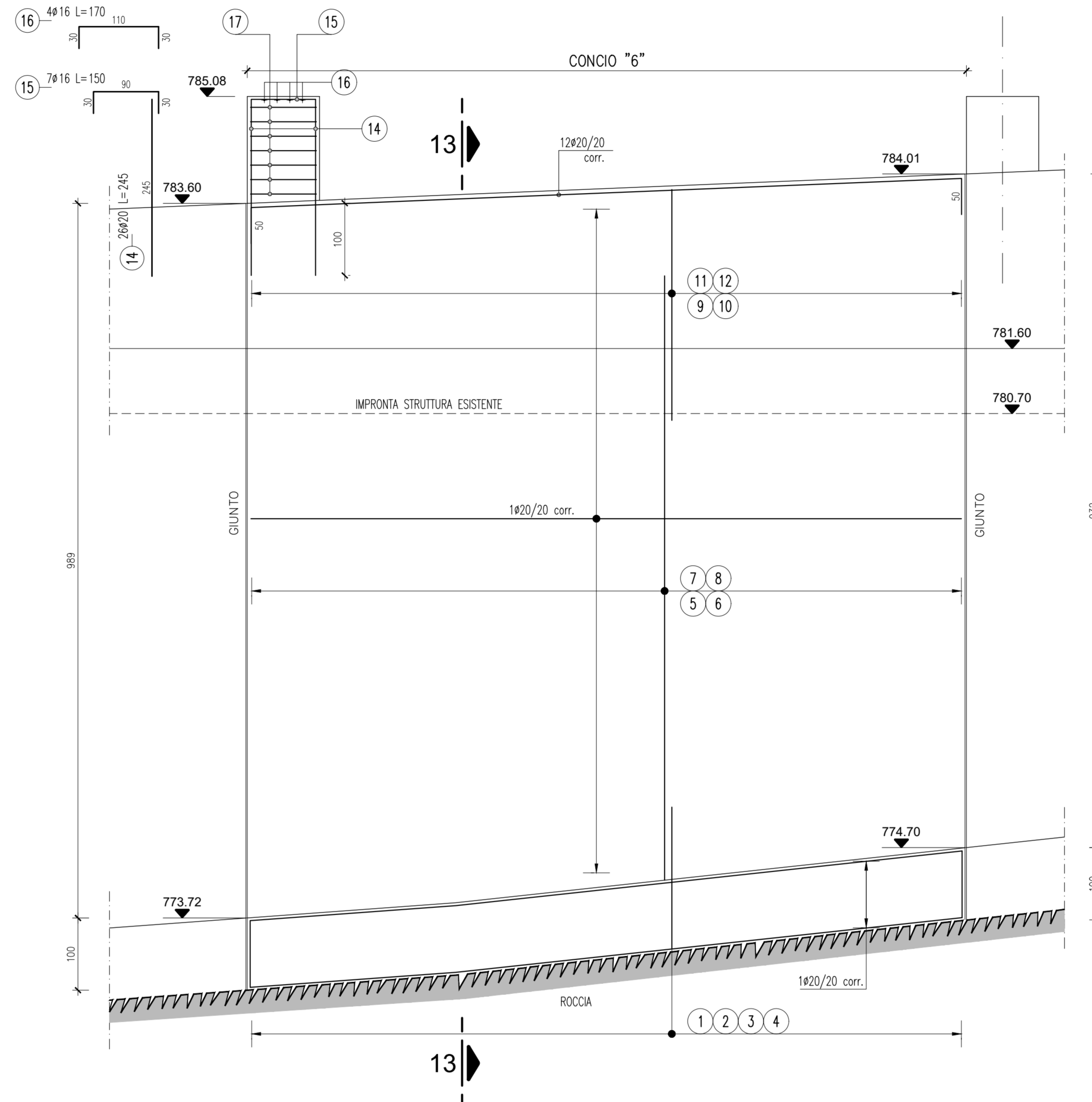


ARMATURA TIP. BAGGIOLO

scala 1:25



CONCIO "6"
SCALA 1:50



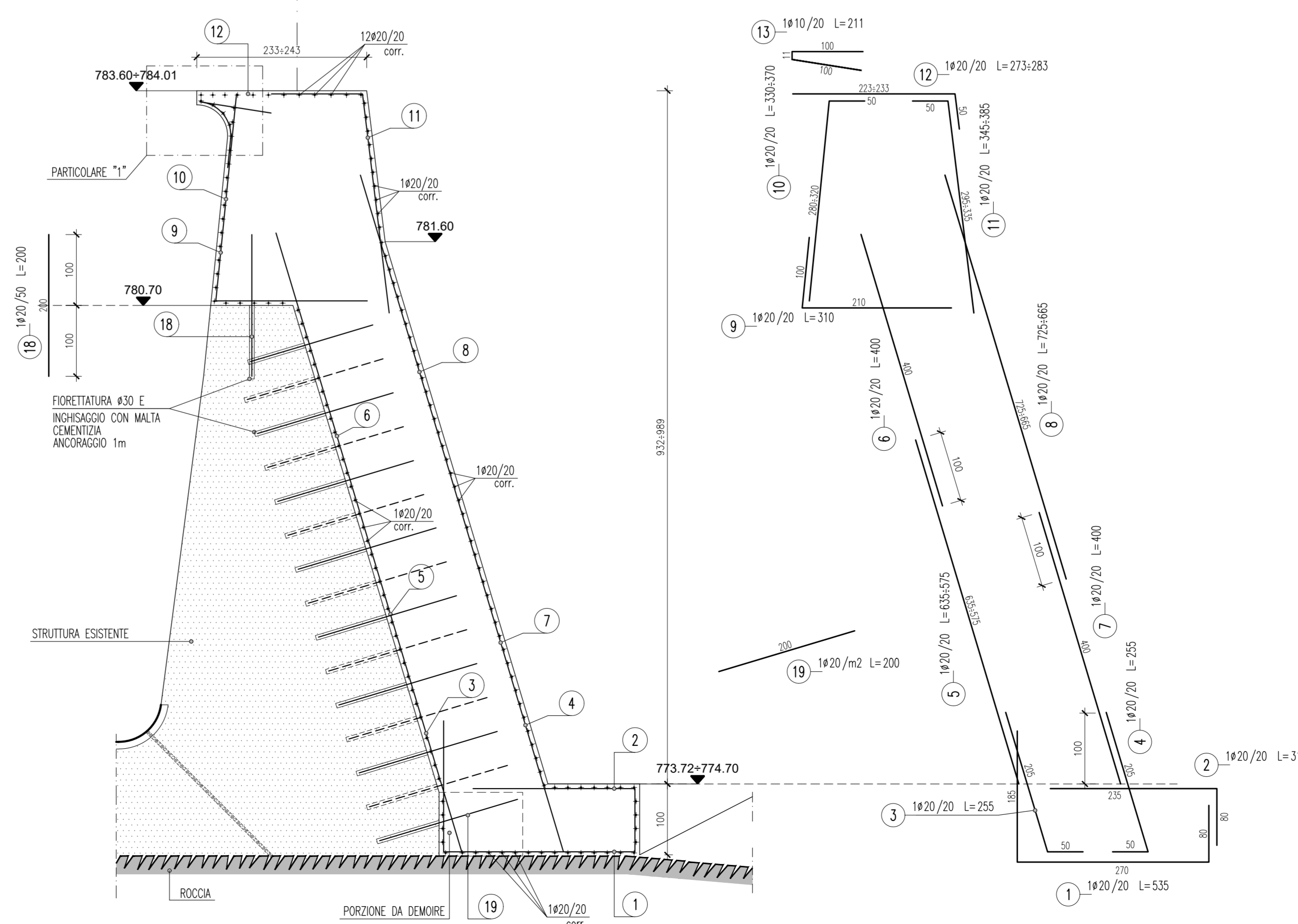
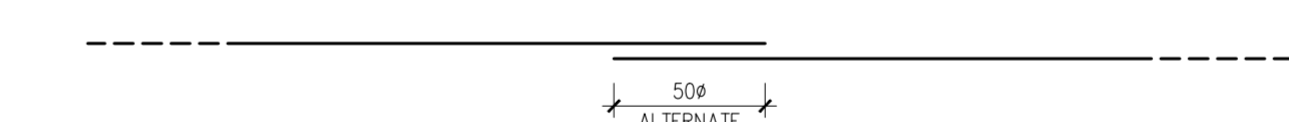
SEZIONE 13-13

SCALA 1:50

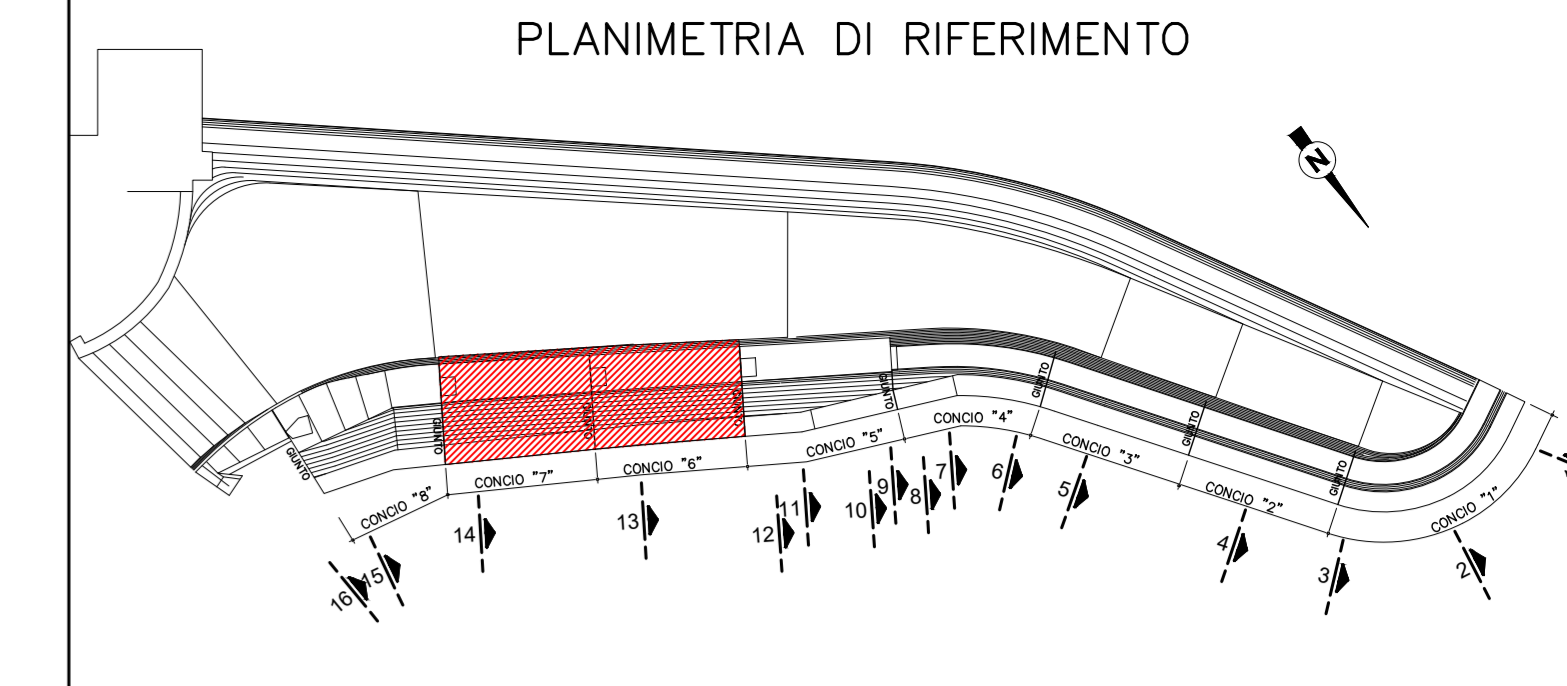


SOVRAPPOSIZIONE ARMATURA CORRENTE

SCALA 1:50



PLANIMETRIA DI RIFERIMENTO



CALCESTRUZZI						
Classe di esposizione ambientale	Classe di resistenza minima [N/mm ²]	Rck	Classe di consistenza	Rapporto a/c max	Contenuto minimo di cemento [kg/m ³]	Diametro massimo di aggregati [mm]
MISCELA S	XF1-XF3	C32/40	S4	0,50	340	30

CARPENTERIE METALLICHE	
ACCIAIO PER CARPENTERIE METALLICHE	Acciaio S355JR - Zincato a caldo
GRIGLIATI	Acciaio S235JR - Zincato a caldo
BULLONI PER CARPENTERIE METALLICHE	Ad alta resistenza - Classe 8.8 - Zincati a caldo
UNIONI BULLONATE	Ad attrito



ALL. B.4.07

DIGA DI CEPPO MORELLI

PROGETTO DI ADEGUAMENTO

PROGETTO ESECUTIVO

CANALE SCARICO DI SUPERFICIE
ARMATURE CONCI 6 e 7
SCALA 1:50



Ing. Claudio Marcello S.r.l.

MILANO, SETTEMBRE 2017