





Il presente disegno e' di proprieta' aziendale - La Societa' tutelera' i propri diritti a termine di legge.

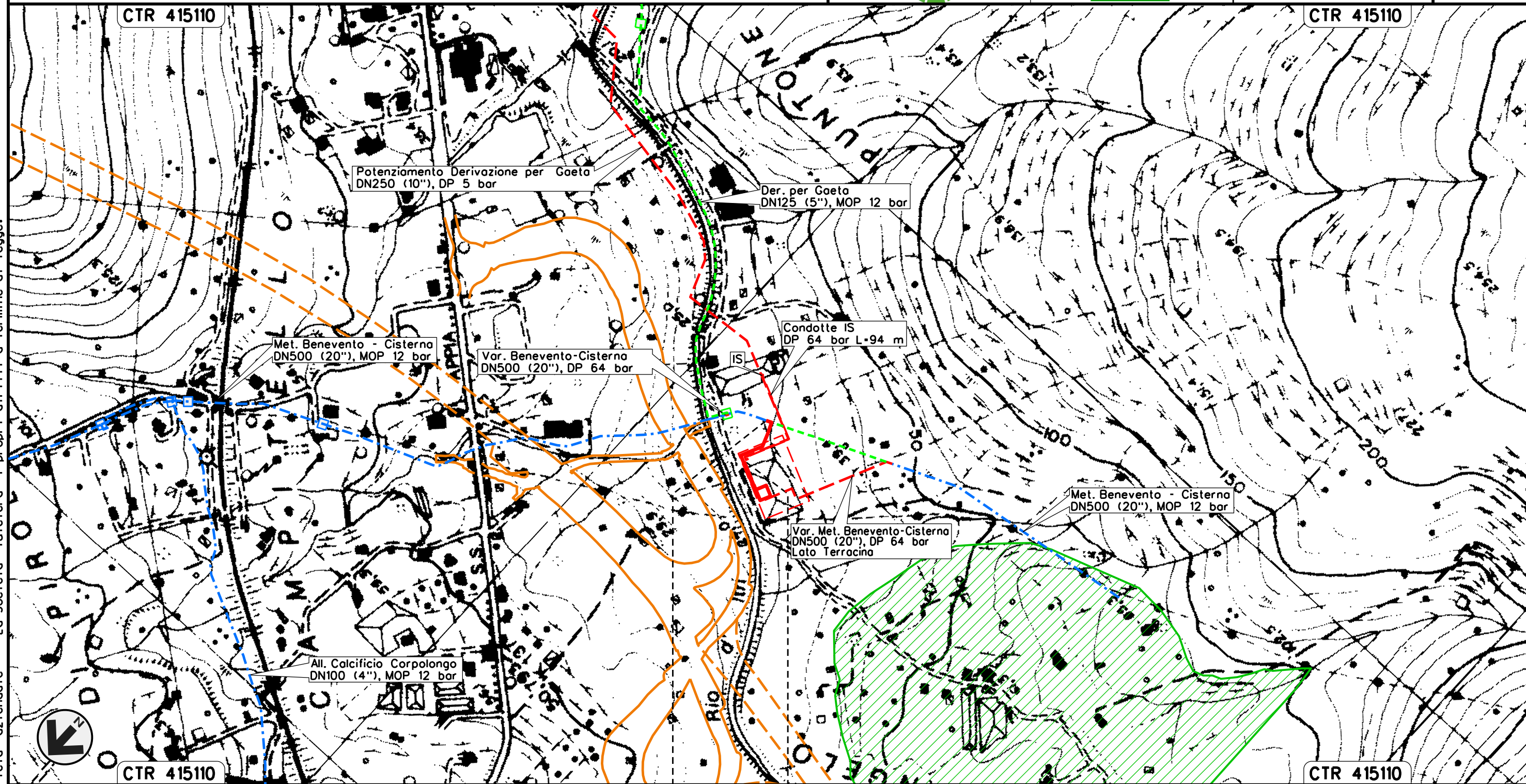


COROGRAFIA Scala 1:200.000

OO	16-04-18	EMISSIONE	AGUZZI	STROPPA	CAPRIOTTI	
INDICE	DATA	R E V I S I O N I			ELABORATO VERIFICATO APPROVATO	
 		Dis. PG-PAI-2103				
		Fg. 1 di 6				
POTENZIAMENTO DERIVAZIONE PER GAETA ED OPERE CONNESSE		Comm. NR/15105				
		INDICE	00			
		Scala 1:5000				
PAI - PERICOLOSITA' FRANA		Sostituisce il				
		Sostituito dal				

00	16-04-18	EMISSIONE	AGUZZI	STROPPA	CAPRIOTTI
INDICE	DATA	REVISIONI	ELABORATO	VERIFICATO	APPROVATO
 			Dis. PG-PAI-2103		
			Comm. NR/15105		

PAI - PERICOLOSITA' FRANA

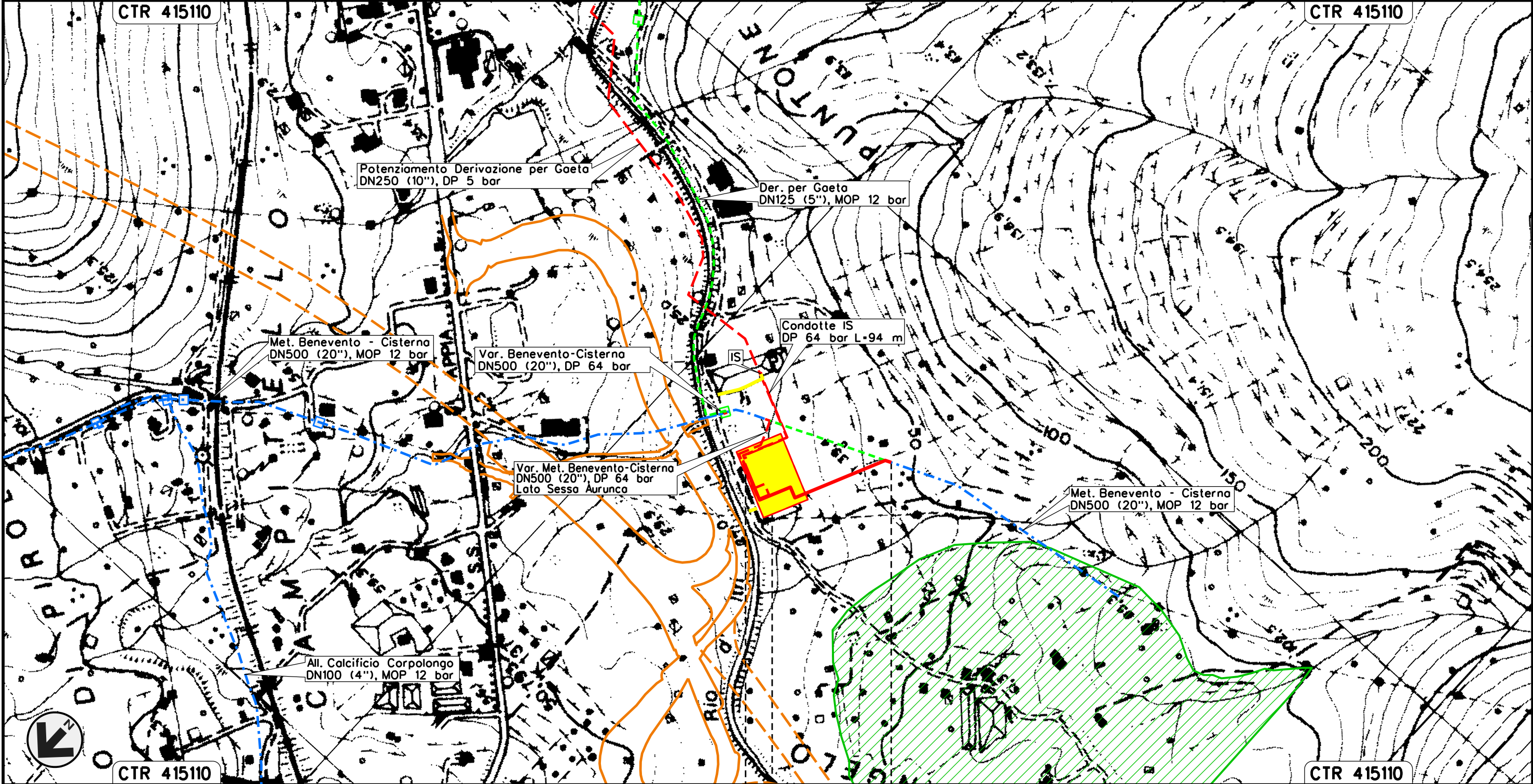


Il presente disegno e' di proprieta' aziendale - La Societa' tutelera' i propri diritti a termine di legge.

0+000	0+218
GAETA	
LATINA	

00	16-04-18	EMISSIONE	AGUZZI	STROPPA	CAPRIOTTI
INDICE	DATA	REVISIONI	ELABORATO	VERIFICATO	APPROVATO
			Dis. PG-PAI-2103		
			Comm. NR/15105		

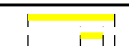
PAI - PERICOLOSITA' FRANA



0+000 0+241

GAETA
 LATINA

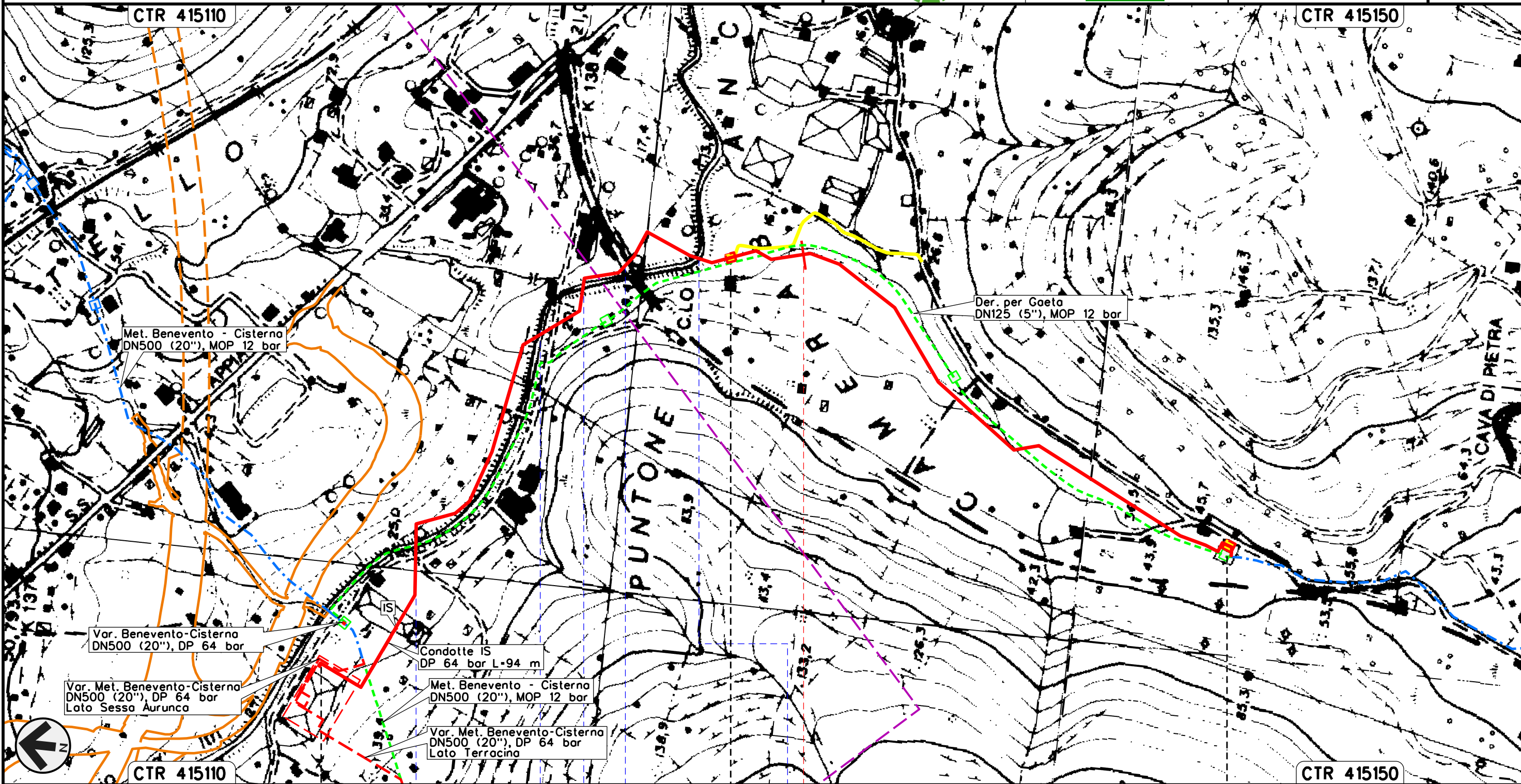
Area trappole HPRS 50 IS 64/12-5 bar
 in Loc. Puntone (in progetto) km 0+000



Il presente disegno e' di proprieta' aziendale - La Societa' tutelera' i propri diritti a termine di legge.

OO	16-04-18	EMISSIONE	AGUZZI	STROPPA	CAPRIOTTI	Foglio
INDICE	DATA	REVISIONI	ELABORATO	VERIFICATO	APPROVATO	4
			Dis. PG-PAI-2103			di 6
			Comm. NR/15105			Scala 1:5000

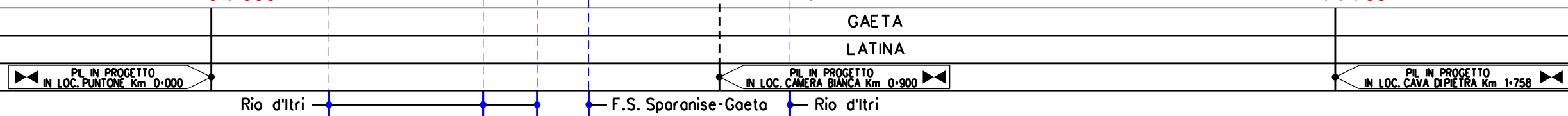
PAI - PERICOLOSITA' FRANA





Il presente disegno e' di proprieta' aziendale - La Societa' tutelera' i propri diritti a termine di legge.

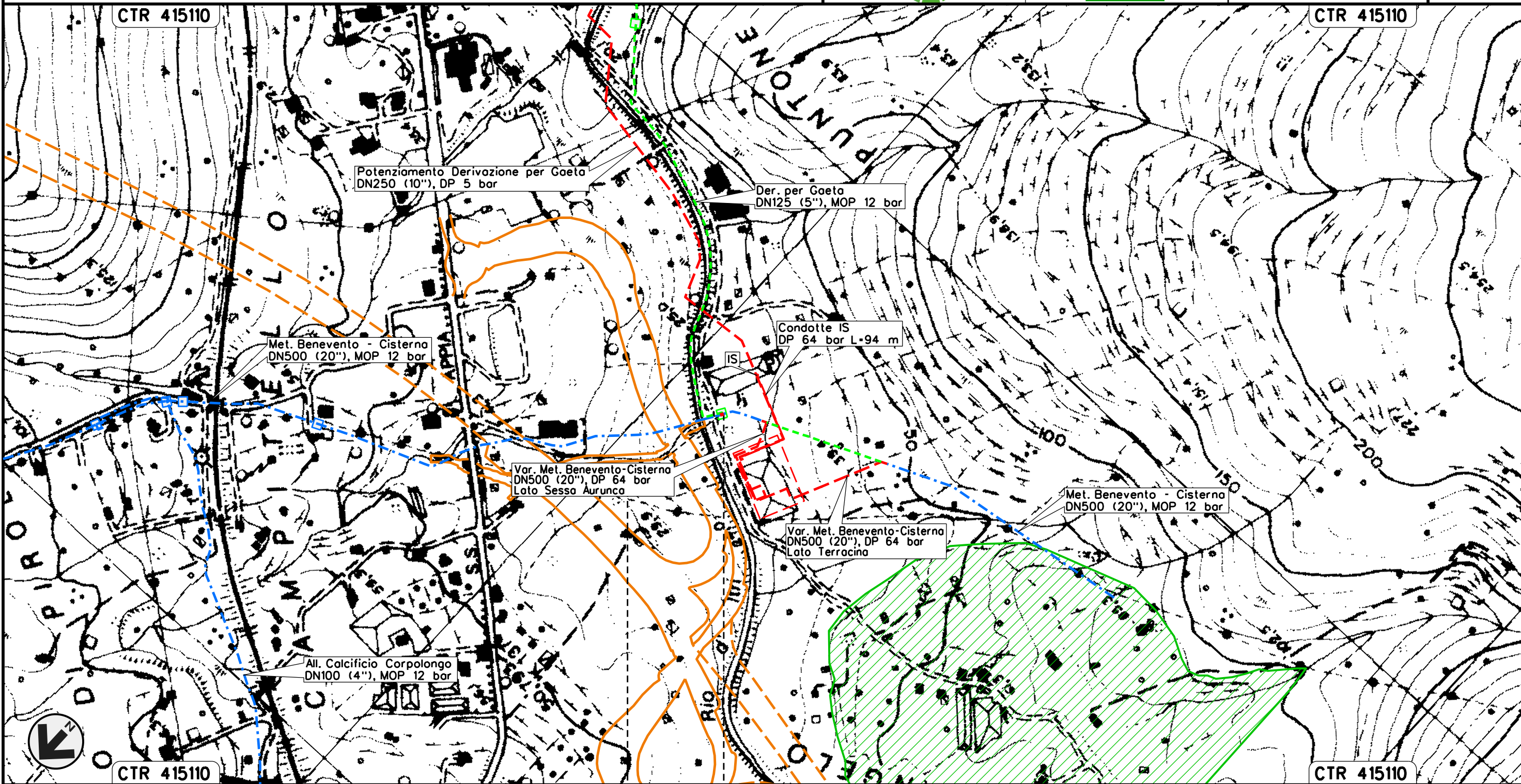


CTR 415110 0+000 1 1+765 CTR 415150





00	16-04-18	EMISSIONE	AGUZZI	STROPPA	CAPRIOTTI
INDICE	DATA	REVISIONI	ELABORATO	VERIFICATO	APPROVATO
 			Dis. PG-PAI-2103		
			Comm. NR/15105		

PAI - PERICOLOSITA' FRANA









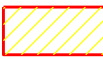











0+000	0+005
GAETA	
LATINA	

Il presente disegno e' di proprieta' aziendale - La Societa' tutelera' i propri diritti a termine di legge.










OO	16-04-18	EMISSIONE	AGUZZI	STROPPA	CAPRIOTTI
INDICE	DATA	R E V I S I O N I	ELABORATO	VERIFICATO	APPROVATO
					
			Dis. PG-PAI-2103		
			Comm. NR/15105		

LEGENDA

SIMBOLOGIA CARTOGRAFICA

- | | | | |
|---|---|--|---|
|  | Metanodotto in progetto |  | Altre condotte di terzi |
|  | Metanodotti in esercizio |  | Altri metanodotti in progetto |
|  | Metanodotti da porre fuori esercizio e recuperare |  | Gallerie, Tunnel, Mini-Microtunnel, Raise Boring e T.O.C. |
|  | Aree impianti stacco-terminale in progetto |  | Impianti di linea in progetto |
|  | Aree impianti stacco-terminale esistenti |  | Impianti di linea su rete in esercizio |
|  | Piazzola di stoccaggio tubazioni |  | Impianti di linea da porre fuori esercizio e recuperare |
|  | Strada di accesso all'impianto |  | Depositi temporanei |
|  | Adeguamento strade esistenti |  | Strade di accesso provvisorio |
|  | Limite sovrapposizione fogli |  | Nuova viabilita' |





SIMBOLOGIA MECCANICA

-  Punto di intercettazione di linea (P.I.L.)
-  Punto di intercettazione di derivazione importante (P.I.D.I.)
-  Punto di intercettazione di derivazione semplice con stacco da P.I.L. (P.I.D.S.)
-  Punto di intercettazione e derivazione semplice con stacco da Linea (P.I.D.S.)
-  Punto di intercettazione con discaggio di allacciamento (P.I.D.A.)
-  Punto predisposto per il discaggio di allacciamento (P.P.D.A.)
-  Punto di sezionamento elettrico terminale (P.S.E.T.)
-  Stazione predisposta per lancio e ricevimento PIG
-  Impianto di riduzione/regolazione della pressione

LEGENDA TEMATICA

AUTORITA' DEI BACINI REGIONALI DEL LAZIO
Aree sottoposte a tutela per dissesto idrogeologico


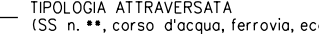



Aree sottoposte a tutela per pericolo di frana

-  Aree a Pericolo A (c. 2 art.6 e art. 16)
-  Aree a Pericolo B (c. 2 art.6 e art. 17)
-  Aree a Pericolo C (c. 2 art.6 e art. 18)
-  Ambiti territoriali caratterizzati, allo stato attuale delle conoscenze disponibili, dall'assenza di elementi documentali tali da consentire la definizione della pericolosita'.

Aree di attenzione per pericolo di frana

-  Aree di Attenzione Geomorfologica (artt. 9 e 19)

Il presente disegno è di proprietà aziendale - La Società tutela i propri diritti a termine di legge.

Progressiva chilometrica	N.	
Comuni		
Province		
Impianti		
Attraversamenti		
Strade - Piste - Piazzole tubazioni		
Area di passaggio		
Scavabilita' terreni	