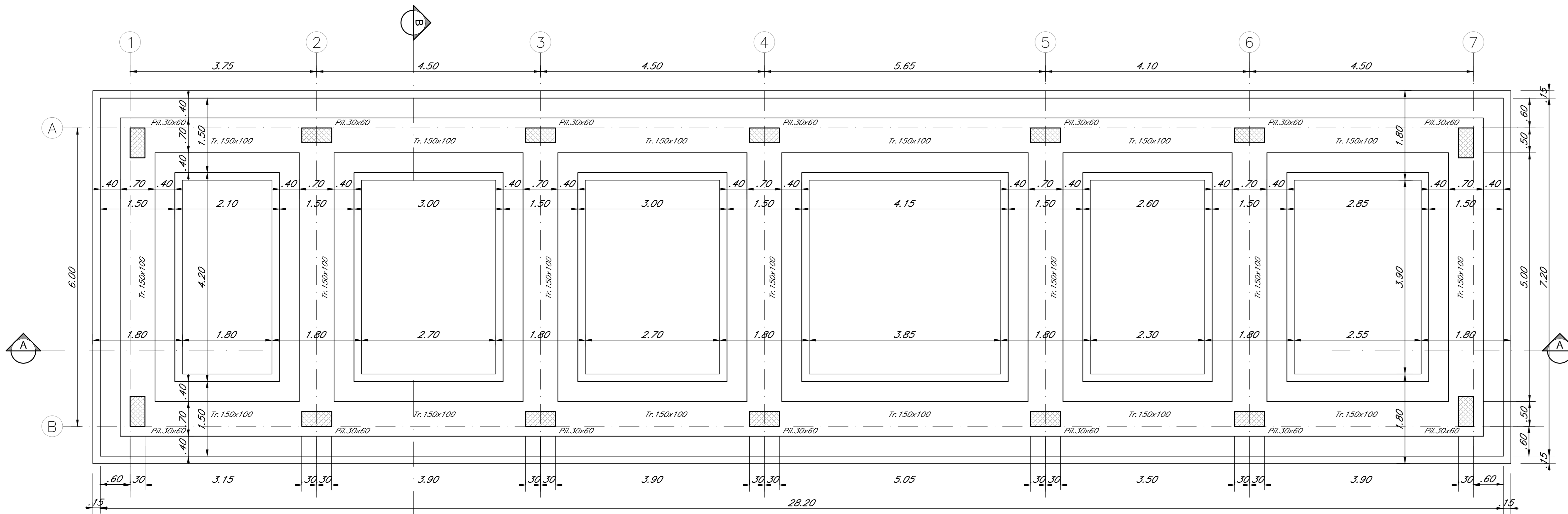
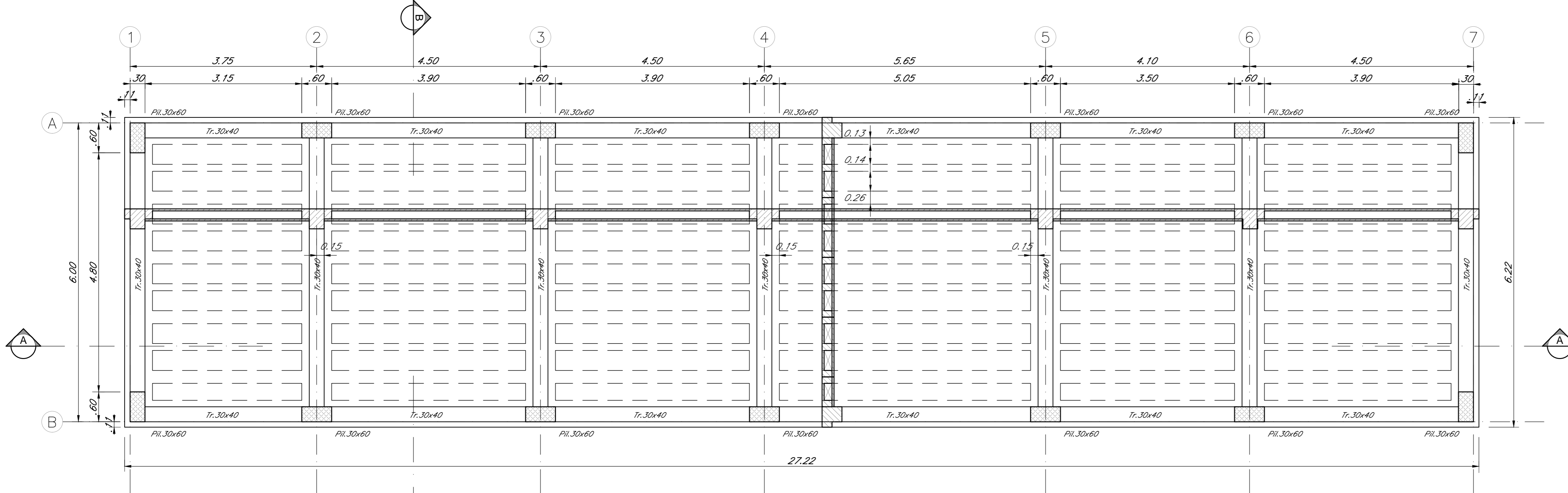


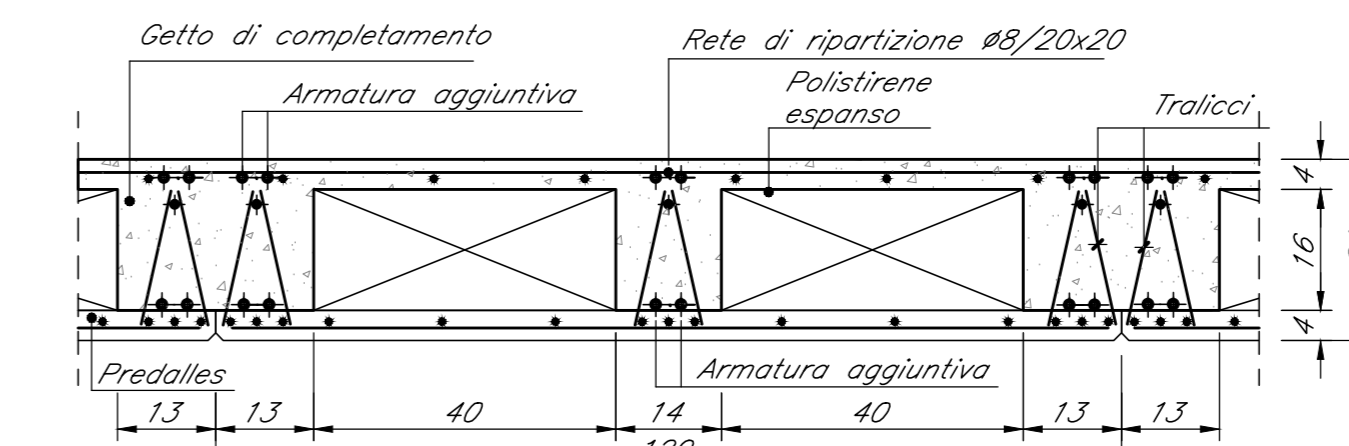
CARPENTERIA FONDAZIONE
SCALA 1:50



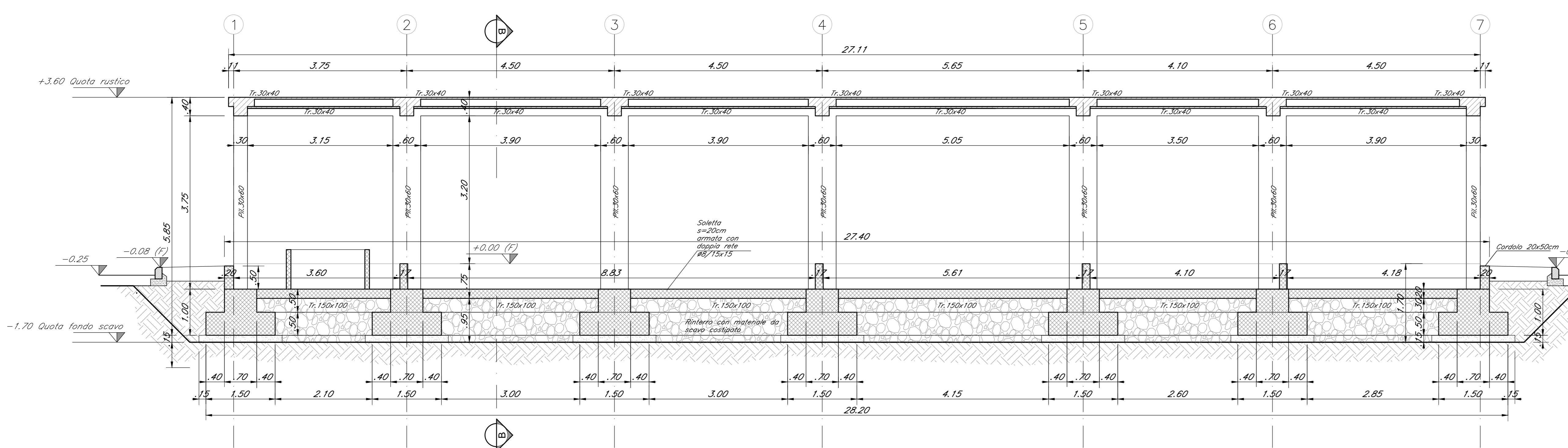
CARPENTERIA COPERTURA
SCALA 1:50



SEZIONE SOLAIO
SCALA 1:10



SEZIONE A-A
SCALA 1:50



SEZIONE B-B
SCALA 1:50

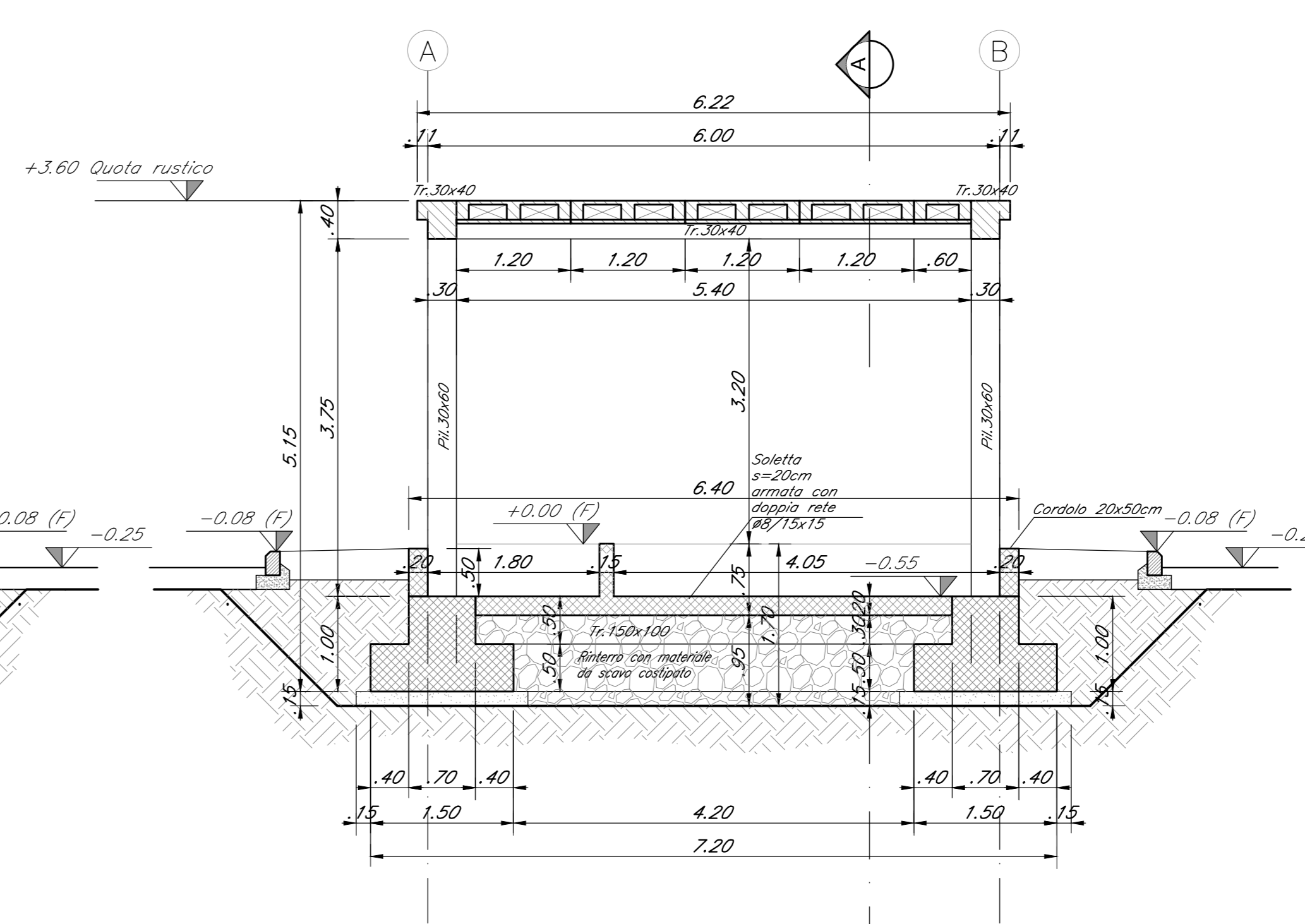


TABELLA MATERIALI

CALCESTRUZZO

Descrizione	Quantità	Spessore	Gruppi di Impiego
C35/45	KC3	0.45	- Impalcati ed elementi in c.a.p. prefabbricati
C35/45	KC3	0.45	- Impalcati ed elementi in c.a.p. gettati in opera
C35/45	KC3	0.45	- Elementi prefabbricati in c.a. per strutture fuori terra
C25/30	KC1	0.55	- Consolette portacoloni ed altri elementi prefabbricati senza funzioni strutturali
C30/37	KC3	0.55	- Impalcati in c.a. ordinarî
C30/37	KC3	0.55	- Solette in c.a. gettate in opera in elevazione
C30/37	KC3	0.55	- Fide e spoglie
C30/37	KC3	0.55	- Banchi e pilastri
C30/37	KC3	0.55	- Strutture in c.a. in elevazione
C30/37	KC3	0.55	- Tamburi a struttura scolare e circolare
C30/37	KC3	0.55	- Muri di controspinta/antiscoppio, soffitti scolari, muri reggiponte
C25/30	KC2	0.60	- Fondazioni non armate (pali, sottoposti, piloni per tiranti sponesi, etc.)
C25/30	KC2	0.60	- Solette di fondazione, fondazioni armate e piatte di varo
C25/30	KC1	0.60	- Carotte capitate e corolle
C25/30	KC2	0.60	- Pali (di pontale o opere di sostegno), diaframmi e relativi cordoli di collegamento gettati in opera
C25/30	KC2	0.60	- Pali/castoremi di fondazione gettati in opera
C28/35	KC3	0.45	- Fabbricati
C12/15	K0	--	- Maltoni e riempimento di livellamento

ACCIAIO

ACCIAIO IN BARRI PER GETTI E RETI ELETTRICAZIONE: B450S, B450D, B450E, B450F, B450G, B450H, B450I, B450J, B450K, B450L, B450M, B450N, B450O, B450P, B450Q, B450R, B450S, B450T, B450U, B450V, B450W, B450X, B450Y, B450Z, B450AA, B450AB, B450AC, B450AD, B450AE, B450AF, B450AG, B450AH, B450AI, B450AJ, B450AK, B450AL, B450AM, B450AN, B450AO, B450AP, B450AQ, B450AR, B450AS, B450AT, B450AU, B450AV, B450AW, B450AX, B450AY, B450AZ, B450BA, B450BB, B450BC, B450BD, B450BE, B450BF, B450BG, B450BH, B450BI, B450BJ, B450BK, B450BL, B450BM, B450BN, B450BO, B450BP, B450BQ, B450BR, B450BS, B450BT, B450BU, B450BV, B450BW, B450BX, B450BY, B450BZ, B450CA, B450CB, B450CC, B450CD, B450CE, B450CF, B450CG, B450CH, B450CI, B450CJ, B450CK, B450CL, B450CM, B450CN, B450CO, B450CP, B450CQ, B450CR, B450CS, B450CT, B450CU, B450CV, B450CW, B450CX, B450CY, B450CZ, B450DA, B450DB, B450DC, B450DD, B450DE, B450DF, B450DG, B450DH, B450DI, B450DJ, B450DK, B450DL, B450DM, B450DN, B450DO, B450DP, B450DQ, B450DR, B450DS, B450DT, B450DU, B450DV, B450DW, B450DX, B450DY, B450DZ, B450EA, B450EB, B450EC, B450ED, B450EE, B450EF, B450EG, B450EH, B450EI, B450EJ, B450EK, B450EL, B450EM, B450EN, B450EO, B450EP, B450EQ, B450ER, B450ES, B450ET, B450EU, B450EV, B450EW, B450EX, B450EY, B450EZ, B450FA, B450FB, B450FC, B450FD, B450FE, B450FF, B450FG, B450FH, B450FI, B450FJ, B450FK, B450FL, B450FM, B450FN, B450FO, B450FP, B450FQ, B450FR, B450FS, B450FT, B450FU, B450FV, B450FW, B450FX, B450FY, B450FZ, B450GA, B450GB, B450GC, B450GD, B450GE, B450GF, B450GG, B450GH, B450GI, B450GJ, B450GK, B450GL, B450GM, B450GN, B450GO, B450GP, B450GQ, B450GR, B450GS, B450GT, B450GU, B450GV, B450GW, B450GX, B450GY, B450GZ, B450HA, B450HB, B450HC, B450HD, B450HE, B450HF, B450HG, B450HH, B450HI, B450HJ, B450HK, B450HL, B450HM, B450HN, B450HO, B450HP, B450HQ, B450HR, B450HS, B450HT, B450HU, B450HV, B450HW, B450HX, B450HY, B450HZ, B450IA, B450IB, B450IC, B450ID, B450IE, B450IF, B450IG, B450IH, B450II, B450IJ, B450IK, B450IL, B450IM, B450IN, B450IO, B450IP, B450IQ, B450IR, B450IS, B450IT, B450IU, B450IV, B450IW, B450IX, B450IY, B450IZ, B450JA, B450JB, B450JC, B450JD, B450JE, B450JF, B450JG, B450JH, B450JI, B450JJ, B450JK, B450JL, B450JM, B450JN, B450JO, B450JP, B450JQ, B450JR, B450JS, B450JT, B450JU, B450JV, B450JW, B450JX, B450JY, B450JZ, B450KA, B450KB, B450KC, B450KD, B450KE, B450KF, B450KG, B450KH, B450KI, B450KJ, B450KK, B450KL, B450KM, B450KN, B450KO, B450KP, B450KQ, B450KR, B450KS, B450KT, B450KU, B450KV, B450KW, B450KX, B450KY, B450KZ, B450LA, B450LB, B450LC, B450LD, B450LE, B450LF, B450LG, B450LH, B450LI, B450LJ, B450LK, B450LL, B450LM, B450LN, B450LO, B450LP, B450LQ, B450LR, B450LS, B450LT, B450LU, B450LV, B450LW, B450LX, B450LY, B450LZ, B450MA, B450MB, B450MC, B450MD, B450ME, B450MF, B450MG, B450MH, B450MI, B450MJ, B450MK, B450ML, B450MM, B450MN, B450MO, B450MP, B450MQ, B450MR, B450MS, B450MT, B450MU, B450MV, B450MW, B450MX, B450MY, B450MZ, B450NA, B450NB, B450NC, B450ND, B450NE, B450NF, B450NG, B450NH, B450NI, B450NJ, B450NK, B450NL, B450NM, B450NN, B450NO, B450NP, B450NQ, B450NR, B450NS, B450NT, B450NU, B450NV, B450NW, B450NX, B450NY, B450NZ, B450OA, B450OB, B450OC, B450OD, B450OE, B450OF, B450OG, B450OH, B450OI, B450OJ, B450OK, B450OL, B450OM, B450ON, B450OO, B450OP, B450OQ, B450OR, B450OS, B450OT, B450OU, B450OV, B450OW, B450OX, B450OY, B450OZ, B450PA, B450PB, B450PC, B450PD, B450PE, B450PF, B450PG, B450PH, B450PI, B450PJ, B450PK, B450PL, B450PM, B450PN, B450PO, B450PP, B450PQ, B450PR, B450PS, B450PT, B450PU, B450PV, B450PW, B450PX, B450PY, B450PZ, B450QA, B450QB, B450QC, B450QD, B450QE, B450QF, B450QG, B450QH, B450QI, B450QJ, B450QK, B450QL, B450QM, B450QN, B450QO, B450QP, B450QQ, B450QR, B450QS, B450QT, B450QU, B450QV, B450QW, B450QX, B450QY, B450QZ, B450RA, B450RB, B450RC, B450RD, B450RE, B450RF, B450RG, B450RH, B450RI, B450RJ, B450RK, B450RL, B450RM, B450RN, B450RO, B450RP, B450RQ, B450RR, B450RS, B450RT, B450RU, B450RV, B450RW, B450RX, B450RY, B450RZ, B450SA, B450SB, B450SC, B450SD, B450SE, B450SF, B450SG, B450SH, B450SI, B450SJ, B450SK, B450SL, B450SM, B450SN, B450SO, B450SP, B450SQ, B450SR, B450SS, B450ST, B450SU, B450SV, B450SW, B450SX, B450SY, B450SZ, B450TA, B450TB, B450TC, B450TD, B450TE, B450TF, B450TG, B450TH, B450TI, B450TJ, B450TK, B450TL, B450TM, B450TN, B450TO, B450TP, B450TQ, B450TR, B450TS, B450TT, B450TU, B450TV, B450TW, B450TX, B450TY, B450TZ, B450UA, B450UB, B450UC, B450UD, B450UE, B450UF, B450UG, B450UH, B450UI, B450UJ, B450UK, B450UL, B450UM, B450UN, B450UO, B450UP, B450UQ, B450UR, B450US, B450UT, B450UU, B450UV, B450UW, B450UX, B450UY, B450UZ, B450VA, B450VB, B450VC, B450VD, B450VE, B450VF, B450VG, B450VH, B450VI, B450VJ, B450VK, B450VL, B450VM, B450VN, B450VO, B450VP, B450VQ, B450VR, B450VS, B450VT, B450VU, B450VV, B450VW, B450VX, B450VY, B450VZ, B450WA, B450WB, B450WC, B450WD, B450WE, B450WF, B450WG, B450WH, B450WI, B450WJ, B450WK, B450WL, B450WM, B450WN, B450WO, B450WP, B450WQ, B450WR, B450WS, B450WT, B450WU, B450WV, B450WW, B450WX, B450WY, B450WZ, B450XA, B450XB, B450XC, B450XD, B450XE, B450XF, B450XG, B450XH, B450XI, B450XJ, B450XK, B450XL, B450XM, B450XN, B450XO, B450XP, B450XQ, B450XR, B450XS, B450XT, B450XU, B450XV, B450XW, B450XX, B450XY, B450XZ, B450YA, B450YB, B450YC, B450YD, B450YE, B450YF, B450YG, B450YH, B450YI, B450YJ, B450YK, B450YL, B450YM, B450YN, B450YO, B450YP, B450YQ, B450YR, B450YS, B450YT, B450YU, B450YV, B450YW, B450YX, B450YY, B450YZ, B450ZA, B450ZB, B450ZC, B450ZD, B450ZE, B450ZF, B450ZG, B450ZH, B450ZI, B450ZJ, B450ZK, B450ZL, B450ZM, B450ZN, B450ZO, B450ZP, B450ZQ, B450ZR, B450ZS, B450ZT, B450ZU, B450ZV, B450ZW, B450ZX, B450ZY, B450ZZ

PRESCRIZIONI

COPRIFERRO NETTO

- PALI DI FONDAZIONE E PER PIANE, DAPPUNTI E RELATIVI COROLI	5-60 mm
- SEZIONI DI FONDAZIONE, FONDAZIONI ARMATE	5-40 mm
- FONDAZIONI NON ARMATE	5-40 mm
- OPERE IN ELEVAZIONE IN VISTA (PILASTRI, SPALLE, BAGNOLI, PALUCCI)	5-40 mm
- OPERE IN ELEVAZIONE CON SUPERFICIE INTERIORI O NON SPECIFICABILI	5-40 mm
- SOLETTE DA PONTE - STRADISSIMO	5-30 mm
- SOLETTE DA PONTE - INTRODOTTI (GETTI IN OPERA)	5-30 mm
- SOLETTE DA PONTE - INTRODOTTI (GETTI SU PRELLE)	5-25 mm
- IMPALCATI - MANICATA UCRONIA	5-40 mm
- IMPALCATI IN C.A.P. - CAVI PRE-TES.	5=max(20mm; 50mm)
- IMPALCATI IN C.A.P. - CAVI POST-TES.	5=20 mm
- VELLETTI	5=30 mm
- PRELLE CON FUNZIONI STRUTTURALI	5=25 mm
- PRELLE SENZA FUNZIONI STRUTTURALI	5=20mm (max. 20mm)
- CARLETTE, CARLETTE E COROLI	5=40 mm

INCIDENZE ARMATURE :

- Travi :	240 Kg/Mc
- Pilastri :	250 Kg/Mc
- Travi di fondazione :	100 Kg/Mc
- Soletta controterra :	60 Kg/Mc

COMMITTENTE:

RFI
R.F.E. - R.F.E. ITALIA
GRUPPO FERROVIE DELLO STATO ITALIANE

PROGETTAZIONE:

ITALFERR
GRUPPO FERROVIE DELLO STATO ITALIANE

DIRETTRICE FERROVIARIA MESSINA - CATANIA - PALERMO
UO INFRASTRUTTURE SUD

PROGETTO DEFINITIVO
RADDOPPIO DELLA TRATTA GIAMPILIERI - FIUMEFREDDO
ELABORATI GENERALI

Fabbricati Tecnologici
Fabbriato PGE/PEP
FA00 - Carpentaria fondazione, solaio di copertura e pilastri

COMMESSA LOTTO FASE ENTE TIPO DOC. OPERA/DISCIPLINA PROG. REV.

RIS2S	00	D	78	WZ	FA0000	002	B
-------	----	---	----	----	--------	-----	---

Rev.	Descrizione	Redatto	Data	Verificato	Data	Approvato	Data	Autorizzato	Data
A	Emissione Esecutiva	A. Inglesi	01/2017	F. Faralli	01/2017	P. Calcinai	01/2017	D. Tassi	
B	Revisione	A. Inglesi	01/2017	F. Faralli	01/2017	P. Calcinai	01/2017		