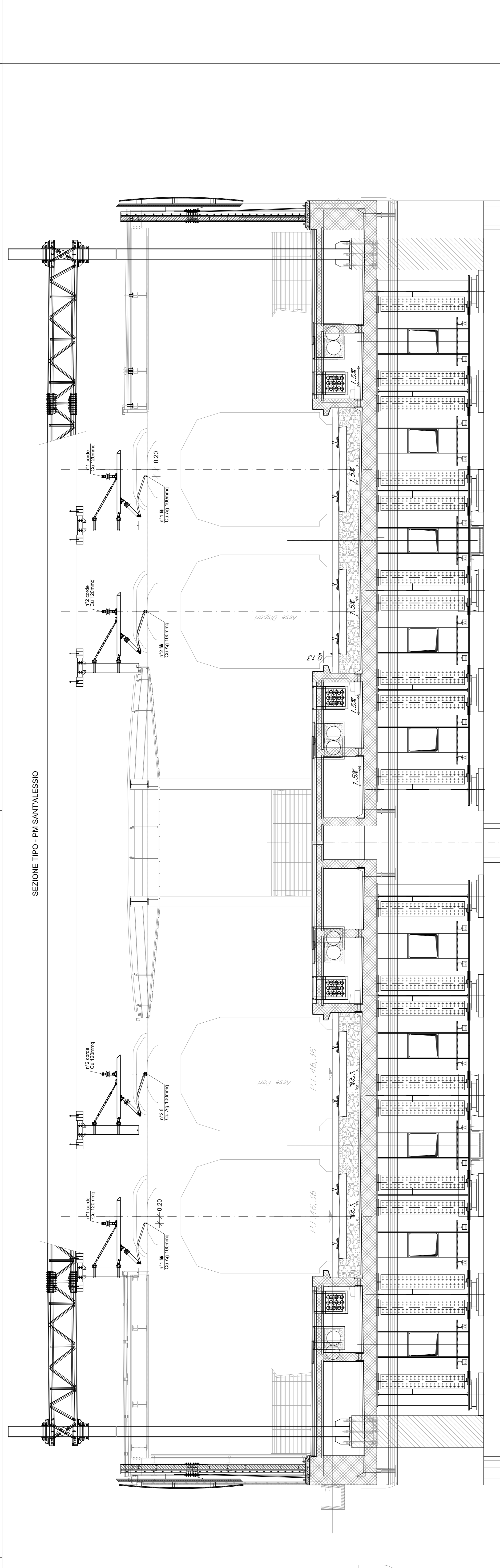
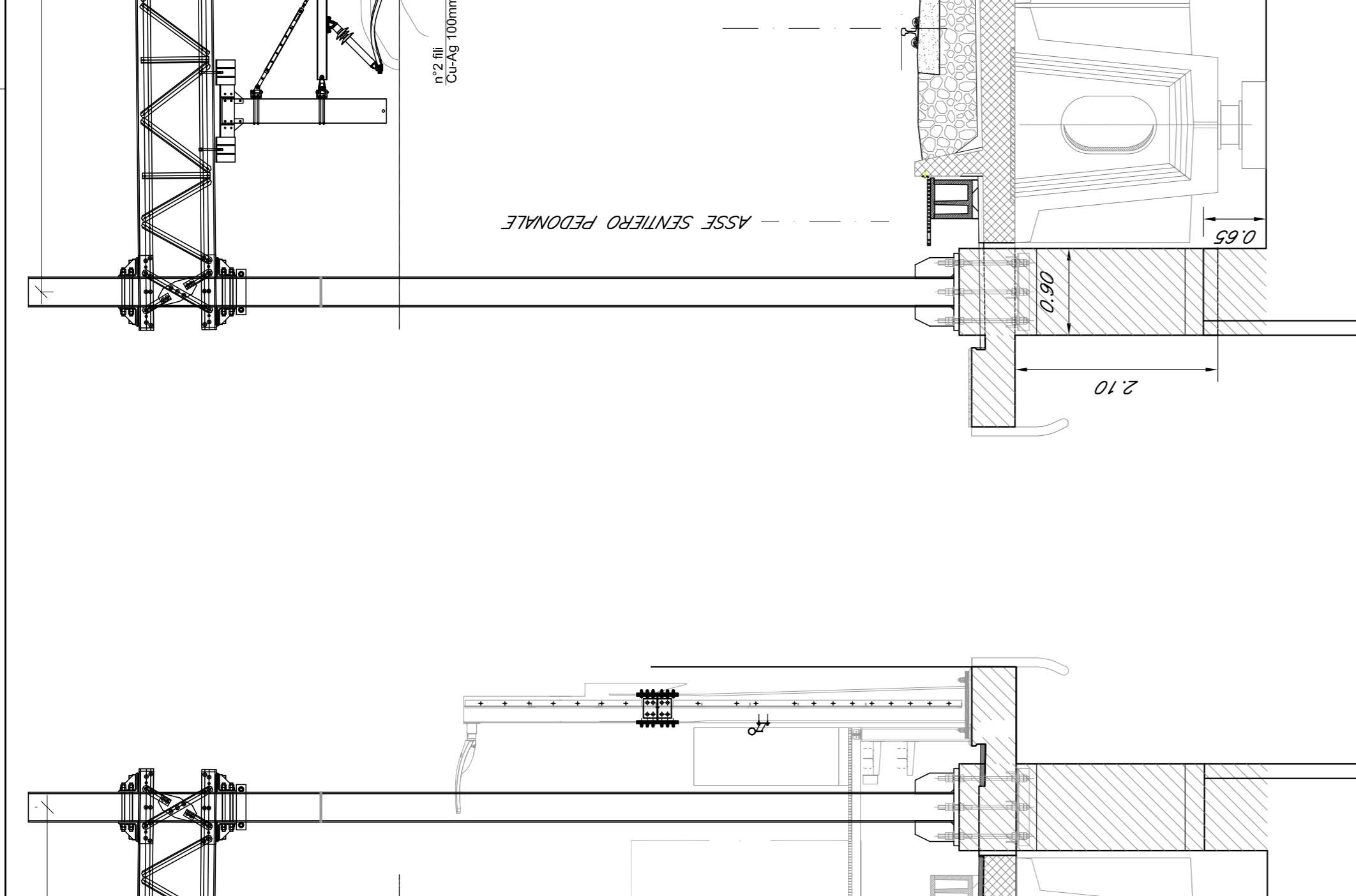


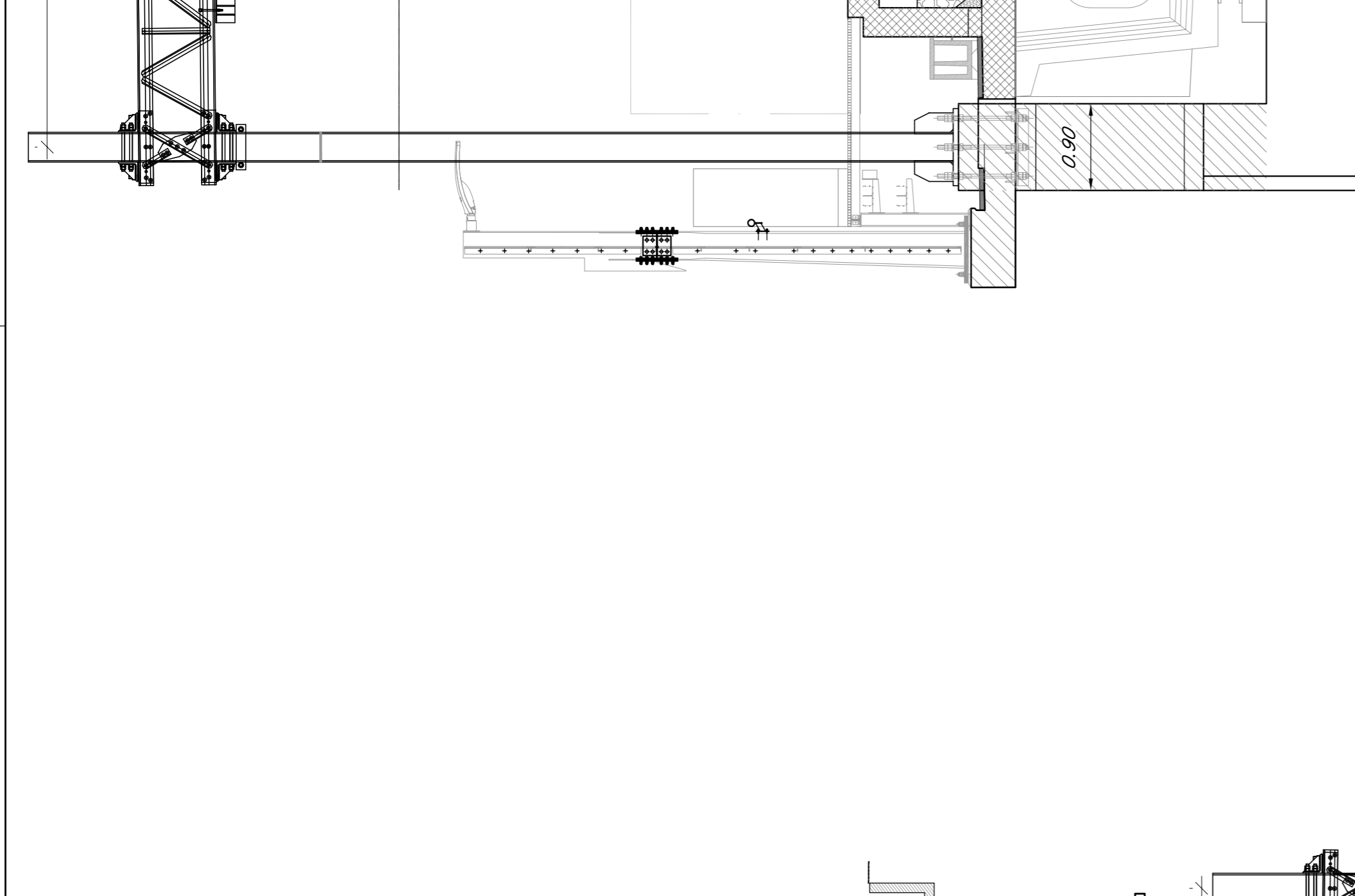
SEZIONE TIPO - STAZIONE LETOIANNI



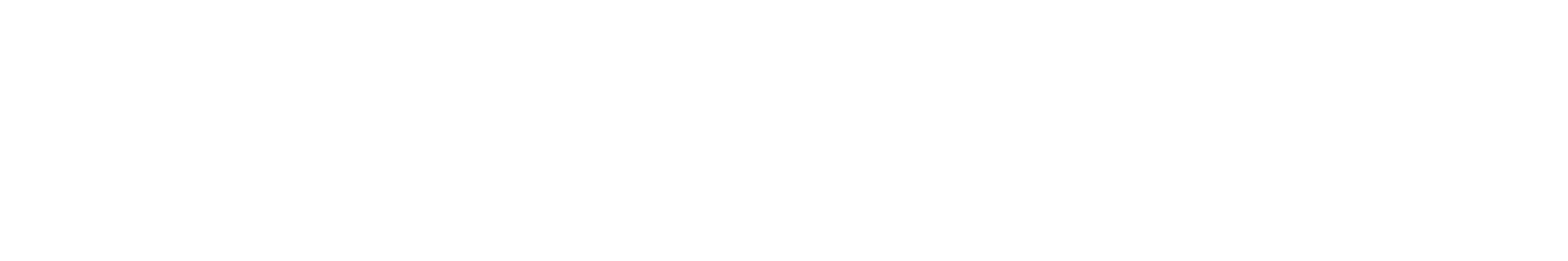
SEZIONE TIPO - VABOTTO VRS



SEZIONE TIPO - VABOTTO VRZ



SEZIONE TIPO - LINEA DI CONTATTO



COMITENTE: **RFI** R.F. FERROVIARIA ITALIANA

PROGETTAZIONE: **ITALFERR** GRUPPO FERROVIARIO ITALIANO

DIRETTRICE FERROVIARIA MESSINA - CATANIA - PALERMO
 U.O. TECNOLOGIE SUD

PROGETTO DEFINITIVO

RADDOPPIO DELLA TRATTA GIAMPILIERI - FIUMEFREDDO
 Lotta 2: Taormina (e) - Giampilieri (e)

IMPIANTI TE - LINEA DI CONTATTO
 SEZIONI SIGNIFICATIVE (1 DI 2)

SCALA: 1:50

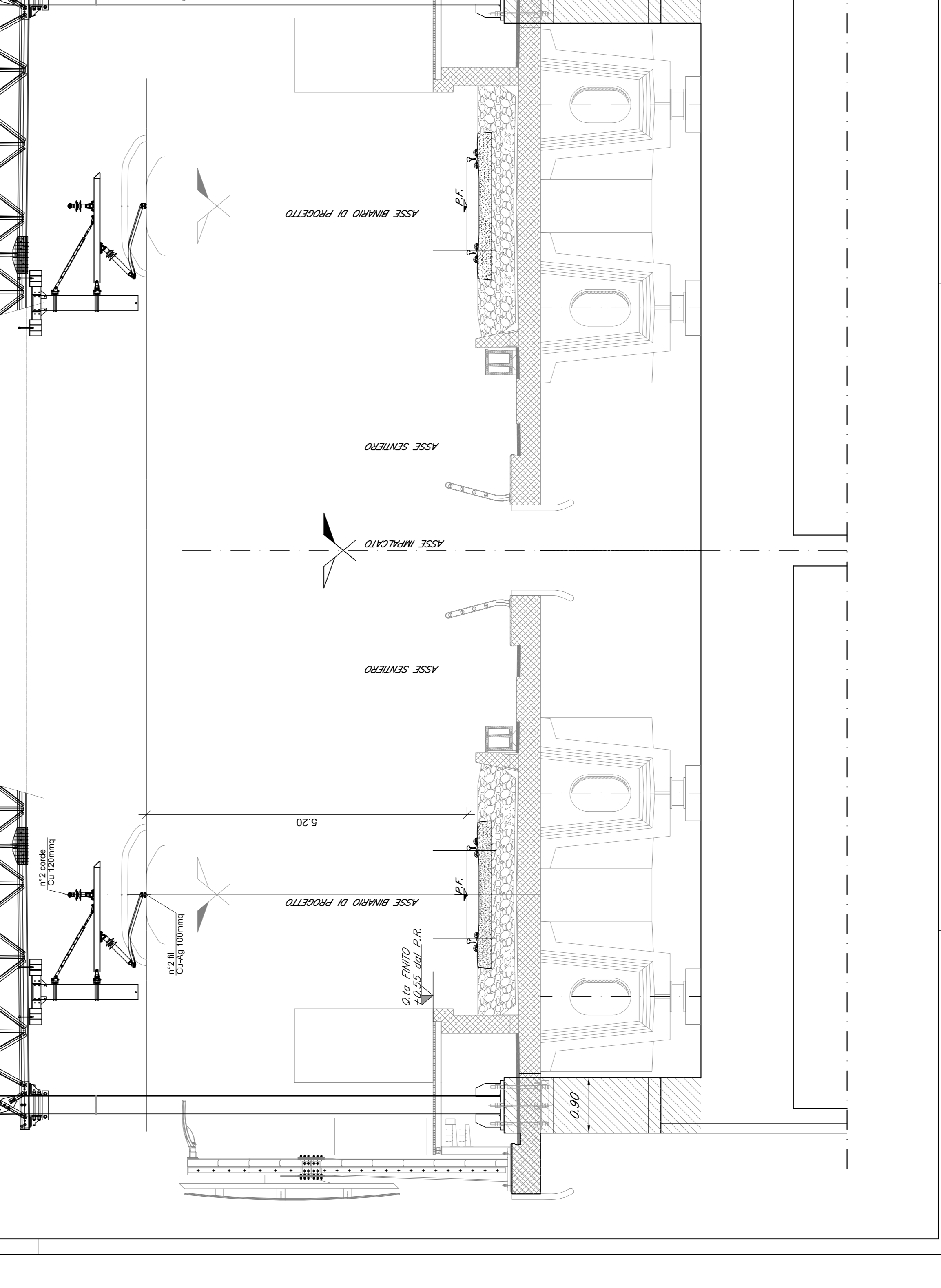
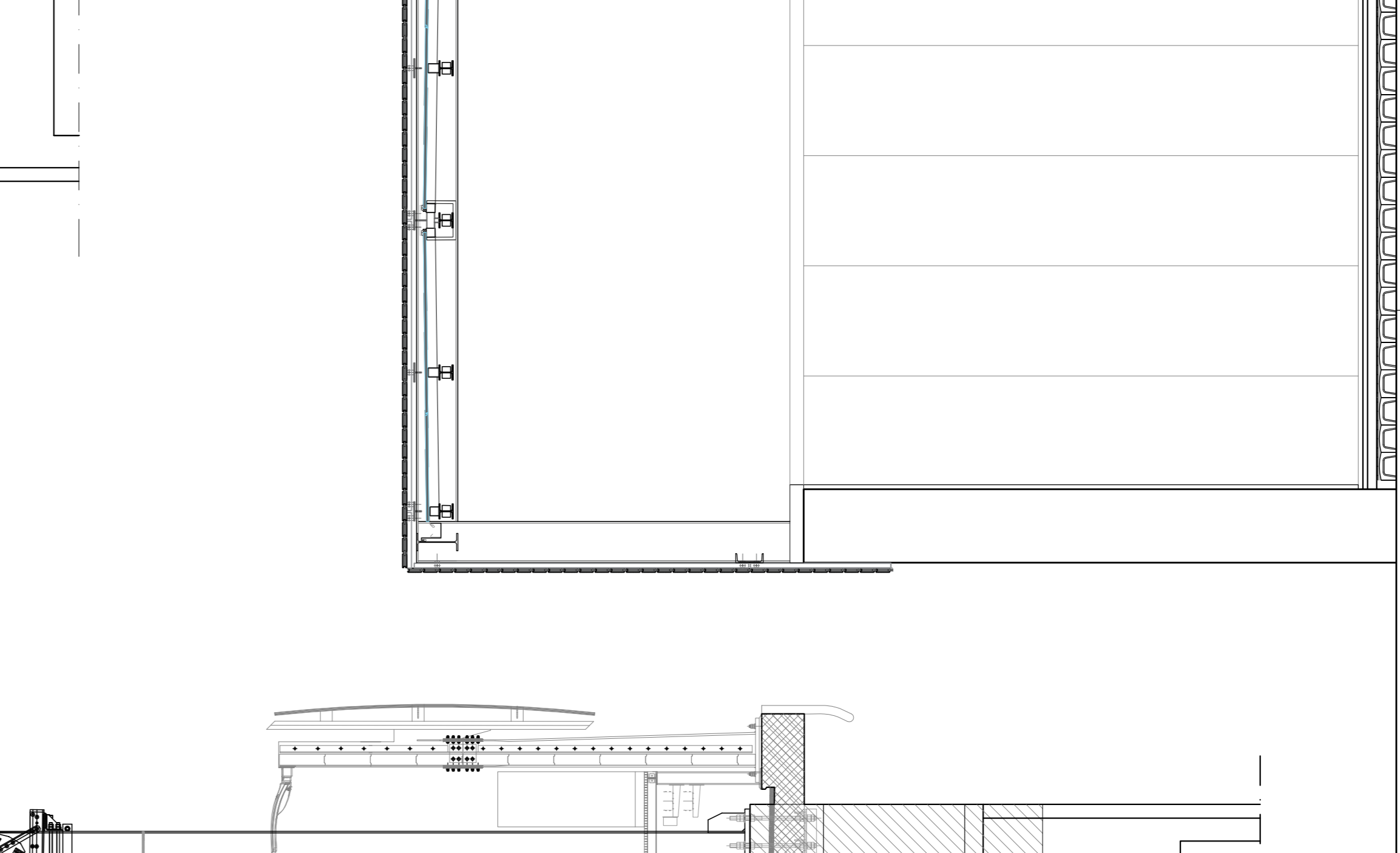
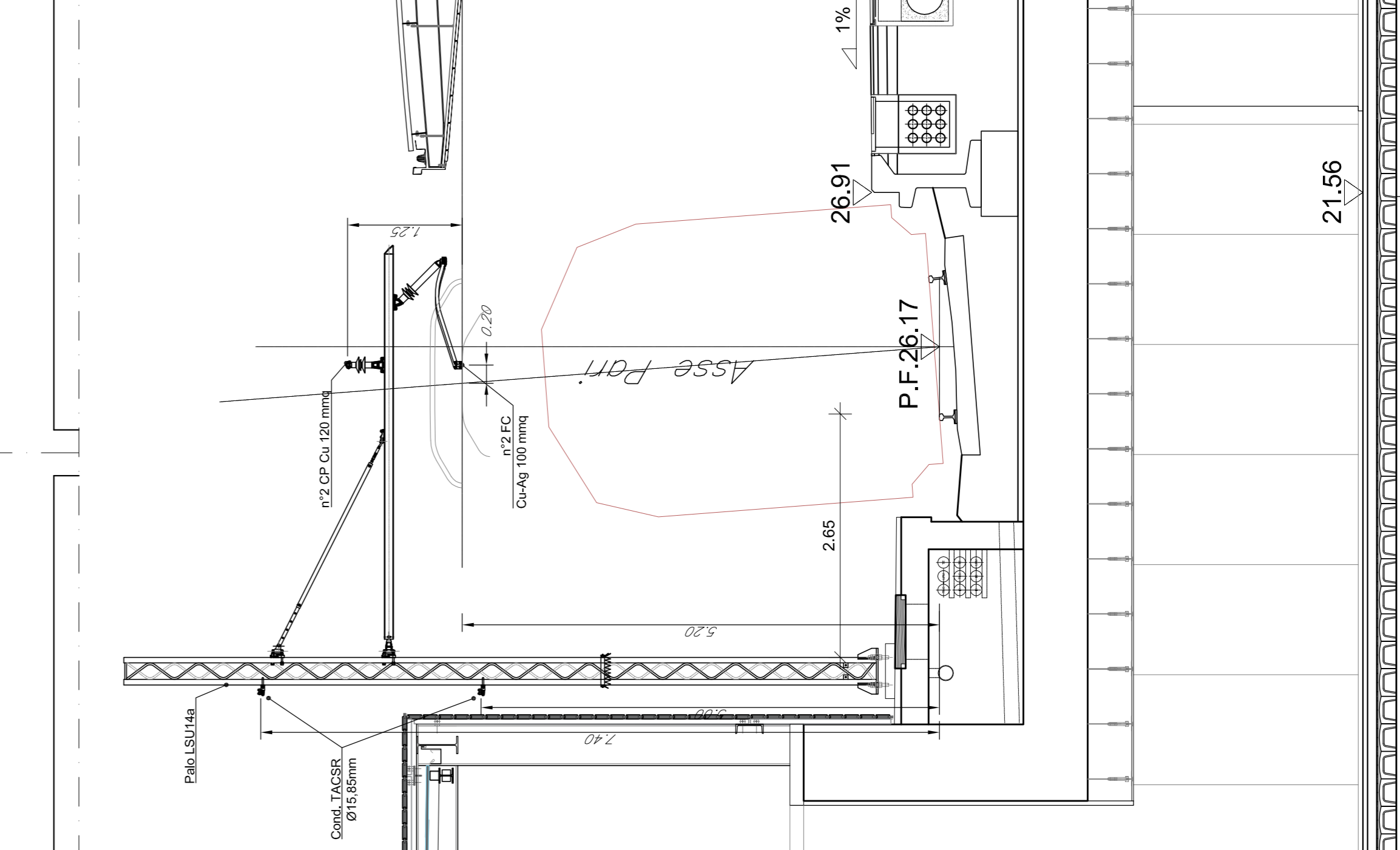
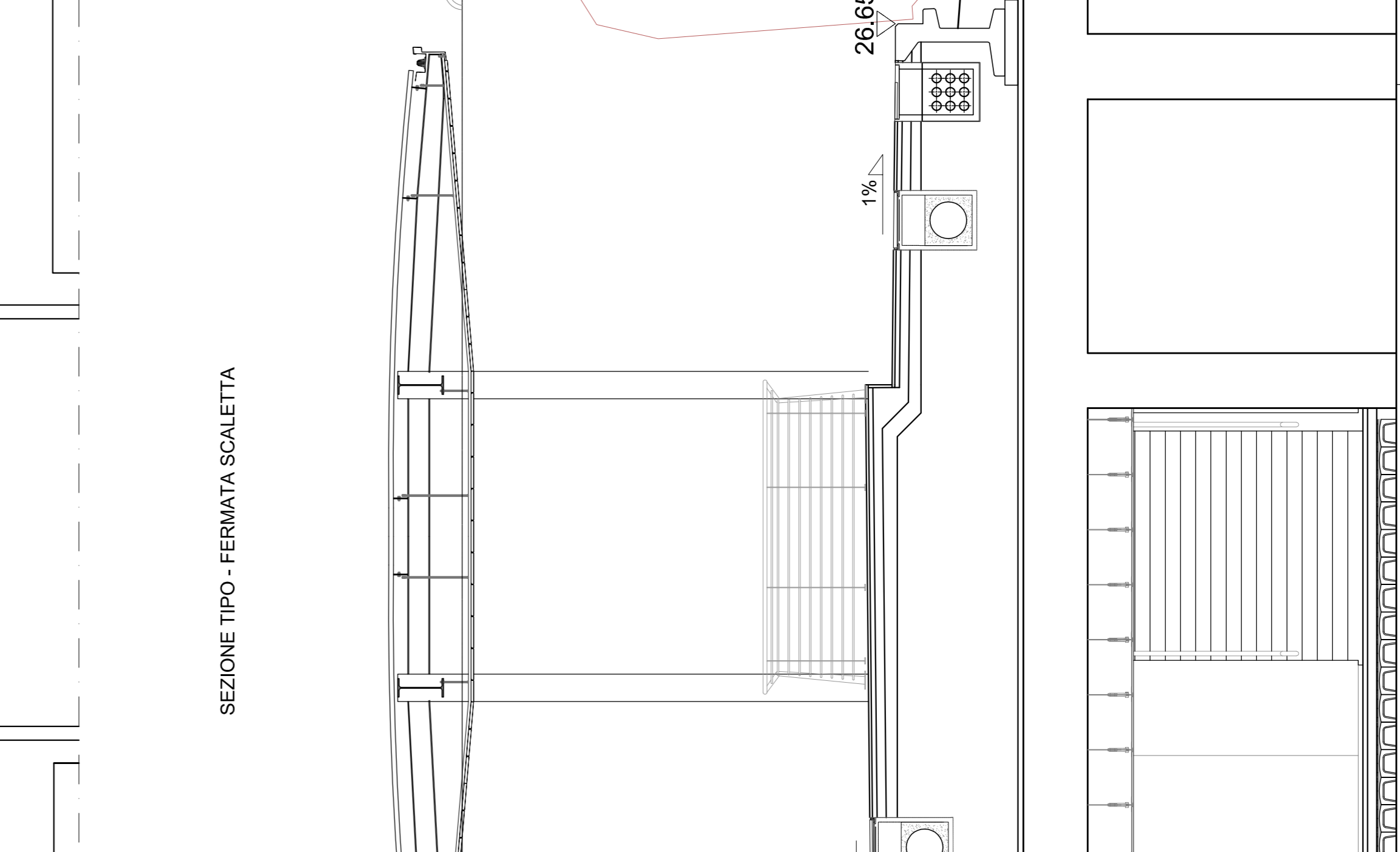
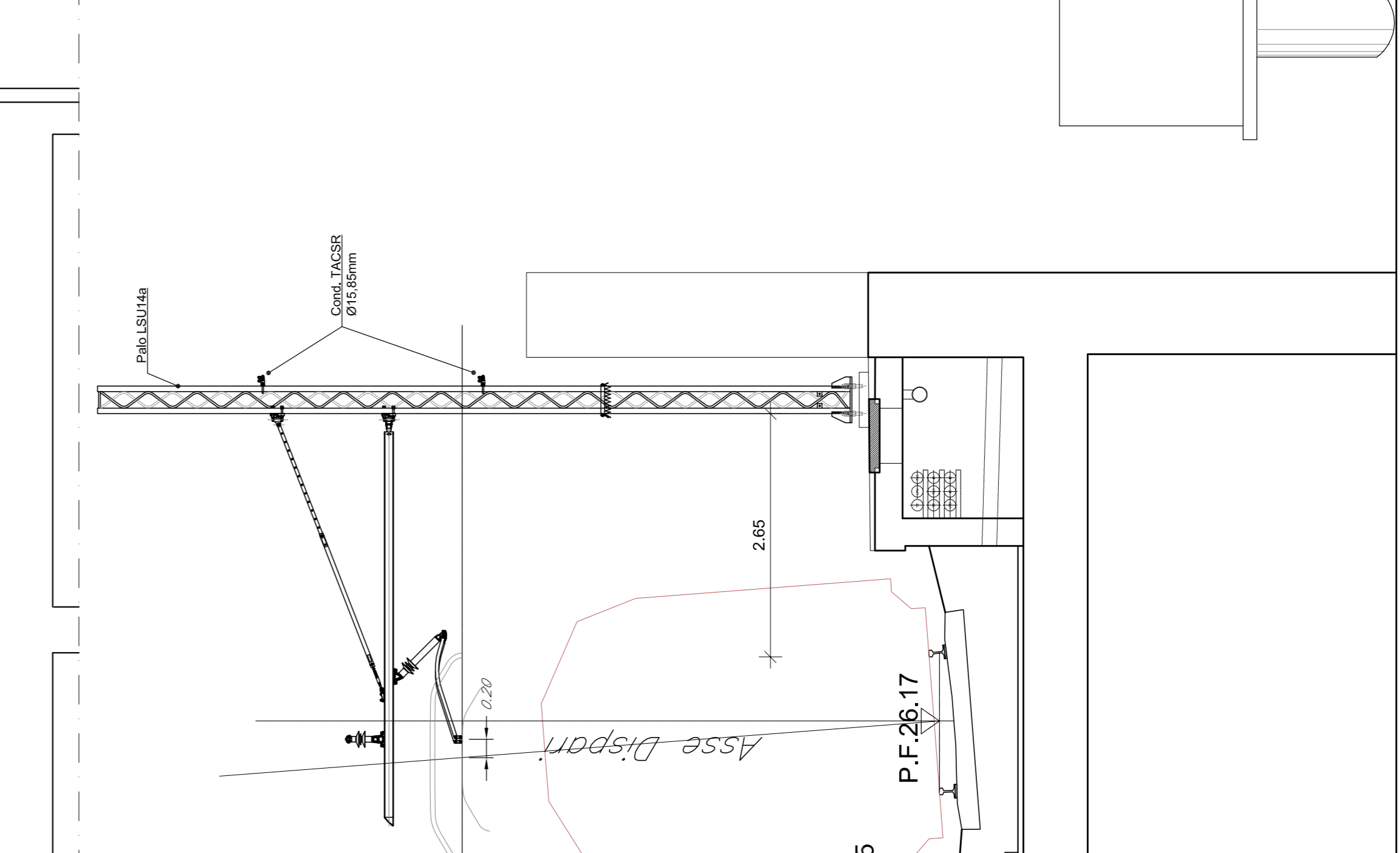
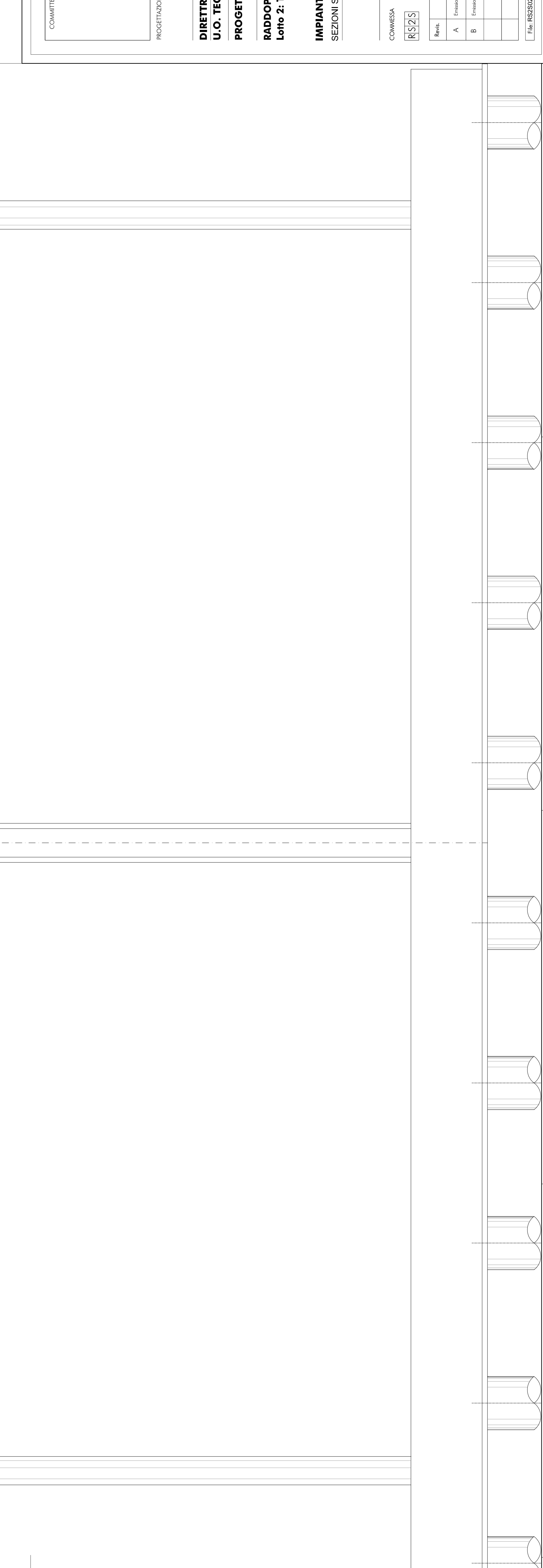
COMMESSA LOTTO FASE ENTE TIPO DOC. OPERAZIONALE PROGR. REV.

RS/23 02 D 67 WB LC0000 001 B

Rev.	Descrizione	Data	Verificata	Data	Approvata	Data	Autore	Data
A	Emissione Esecutiva							
B	Emissione Esecutiva							

Il file: RS/23027WB/LC000002/SEZIONI TE (1 DI 2).DWG

11.000



21.56