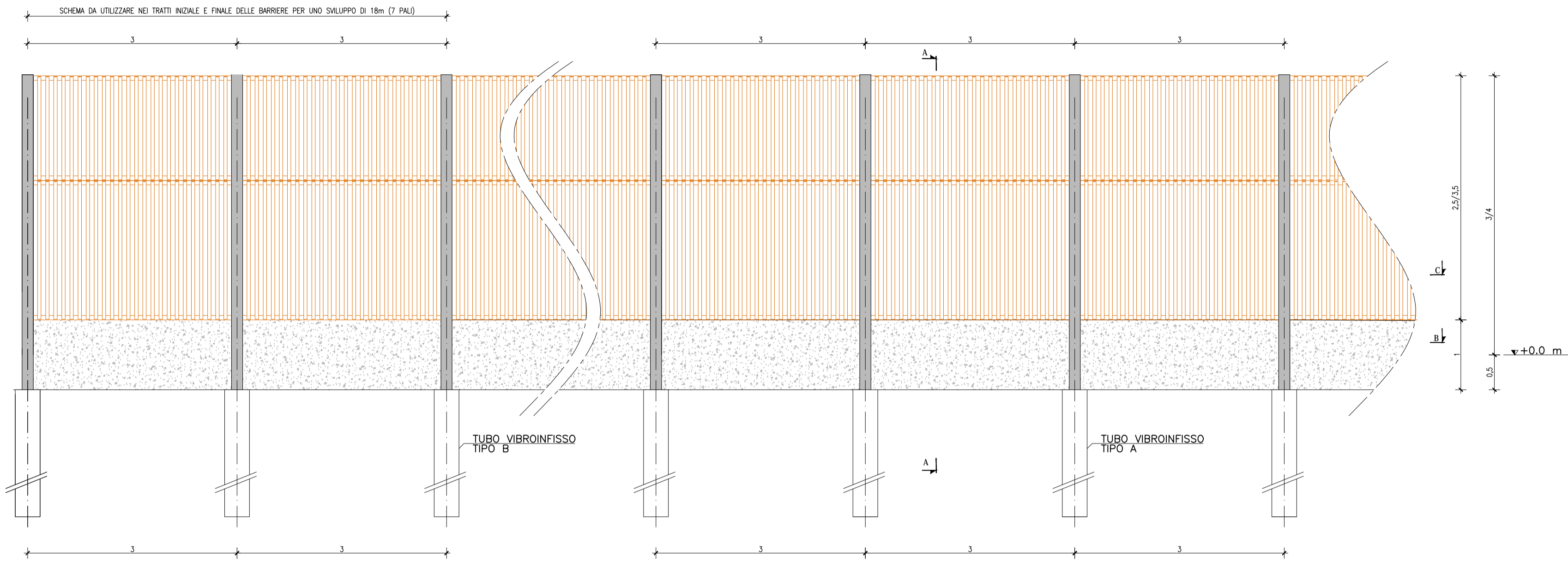
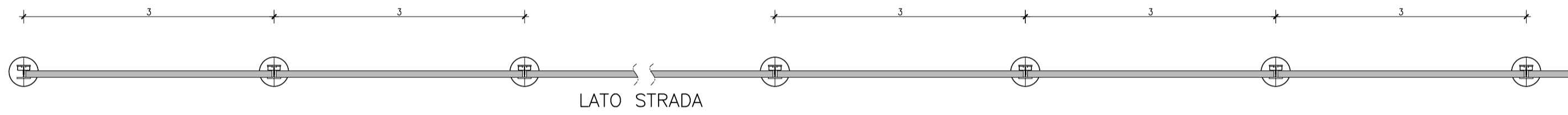


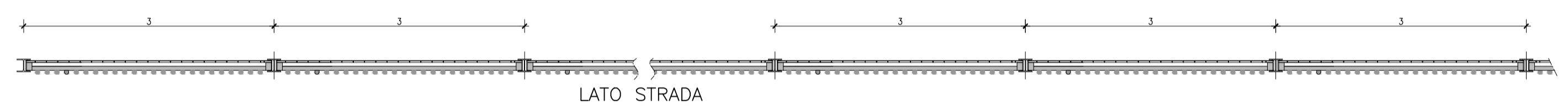
BARRIERA IN LEGNO SU RILEVATO H_{TUORI TERRA} = 3/4m
SCALA 1:50



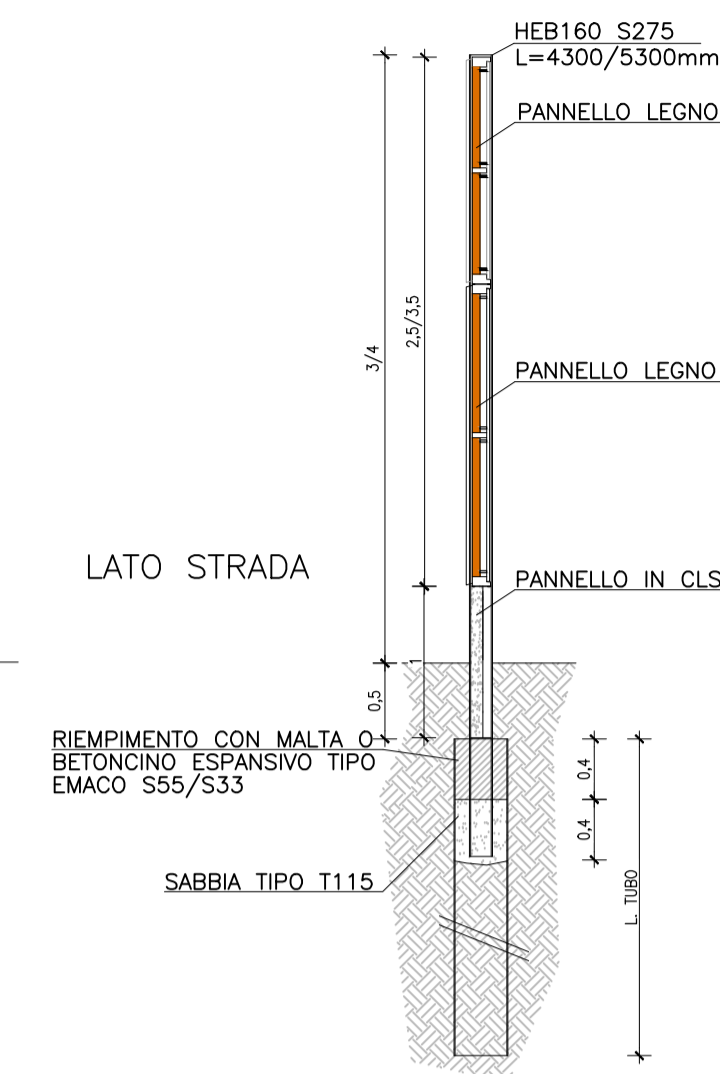
SEZIONE B-B



SEZIONE C-C



SEZIONE A-A
SCALA 1:50



POSIZIONAMENTO BARRIERA
SCALA 1:50

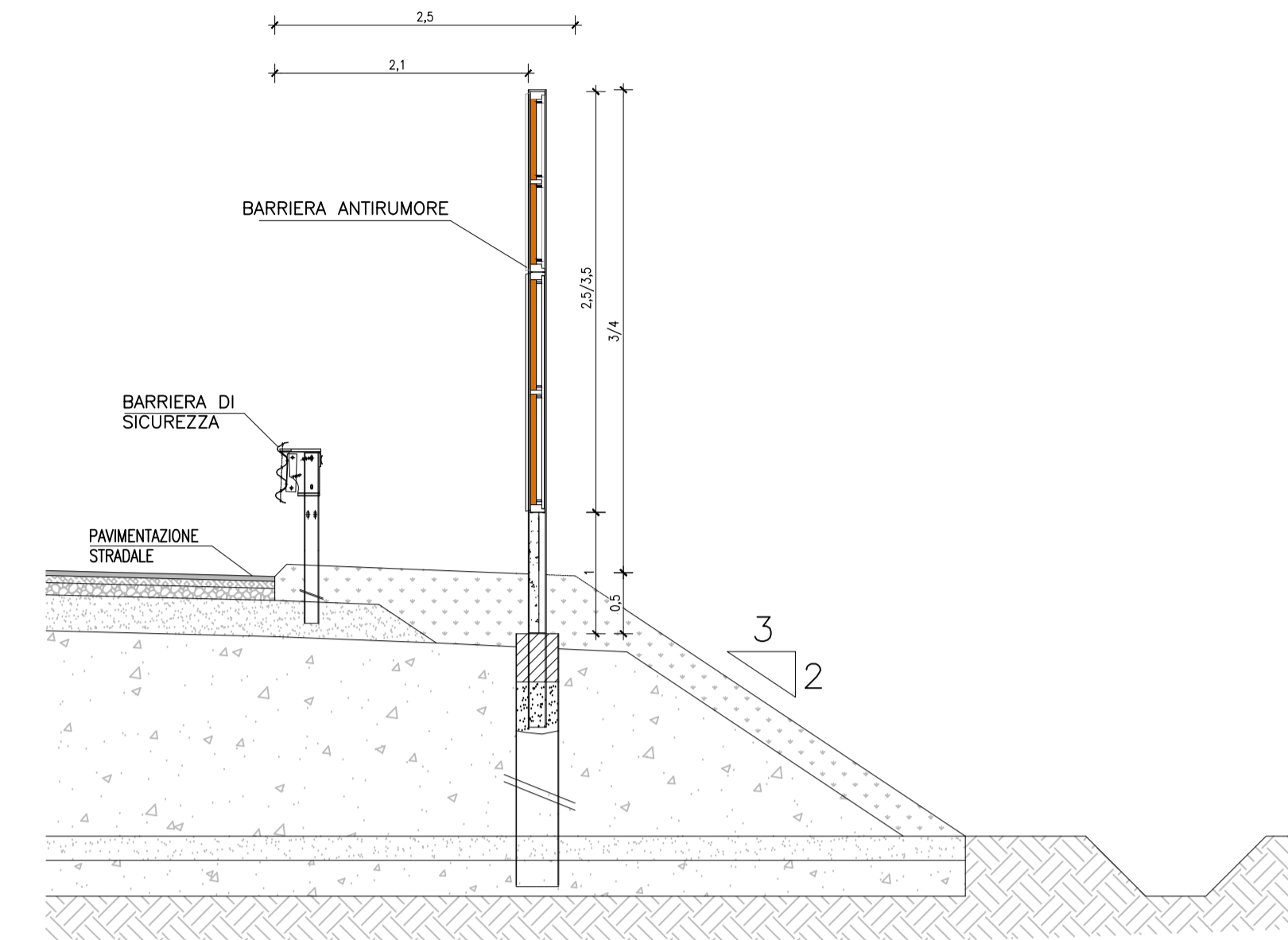
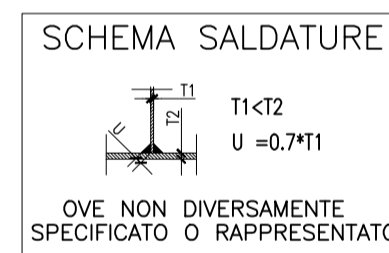
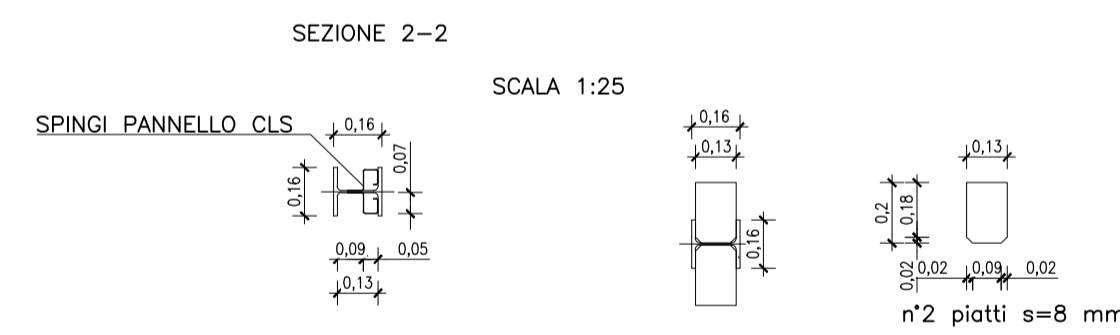


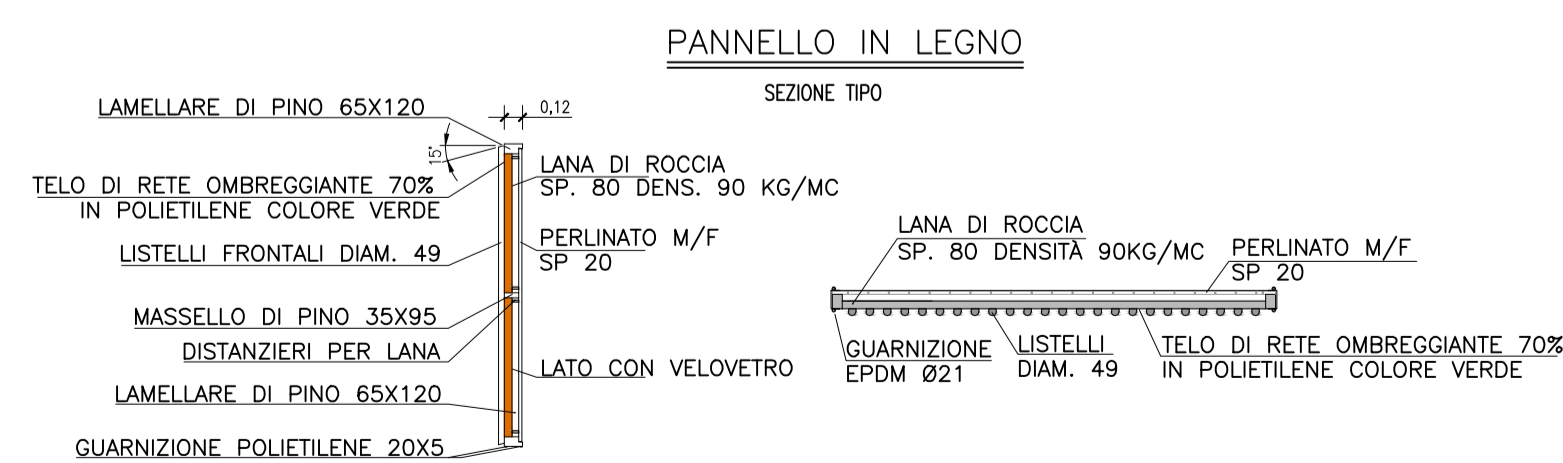
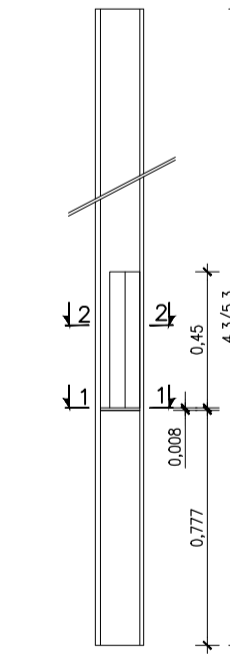
TABELLA TUBI VIBROINFISSI				
	H Barriera F. TERRA [M]	L Tubo [MM]	φ Tubo [MM]	Sp. Tubo [MM]
Sez. Corrente (TIPO A)	3/4	3000	355.6	8
Sez. di Estremità (TIPO B)	3/4	4000	355.6	12



CARPENTERIA: ACCIAIO S275JR
ZINCATURA A CALDO
VERNICIATURA RAL 6001

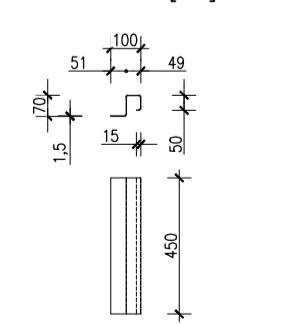


COLONNA SCALA 1:25
HEB160 L=4,3/5,3 m



SPINGI PANNELLO CLS

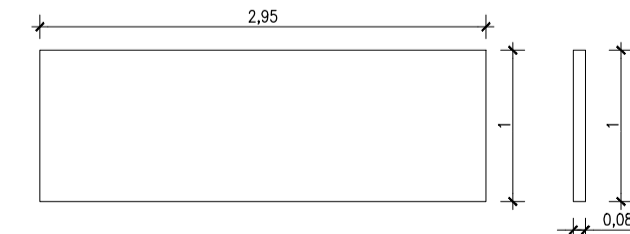
QUOTE [mm]



SVILUPPO ~220X1.5 L=450 (RAGGI NON QUOTATI R.5) SEZIONE 1-1

PANNELLO PREFABBRICATO s=8 cm Rck40

SEZIONE TIPO



ANAS S.P.A.



AUTOSTRADA A4 - VARIANTE DI MESTRE

PASSANTE
AUTOSTRADALE

(L.443/2001 D.Lgs. 20.08.2002 N°190)

PROGETTO ESECUTIVO
C.U.P. D51B04000060001

IL RESPONSABILE
DEL PROGETTO

GENERAL CONTRACTOR

Passante di Mestre s.c.p.a.

DIREZIONE LAVORI



PROGETTAZIONE ESECUTIVA



INTERVENTI DI MITIGAZIONE AMBIENTALE
CASSELLO DI MARTELLAGO-SCORZE' E VIABILITA' DI COLLEGAMENTO
BARRIERE FONDOASSORBENTI - TIPOLOGICO BARRIERA IN LEGNO SU RILEVATO H = 3-4 M

CODICE DOCUMENTO

ZLT.5E2.E2000.PE.TP.005.00

CODIFICA WBS

E2000

REV.	DATA	DESCRIZIONE	REDATTO	CONTROLLATO	APPROVATO	TAVOLA
00	06/14	EMISSIONE UFFICIALE	SPINZA	ZANCHETTIN	ZOLLET	E2000.PE.TP.005
01						SCALA
02						VARIE
03						GAD
04						ACAD2004
NOTE FILE						ZLT.5E2.E2000.PE.TP.005.00.dwg