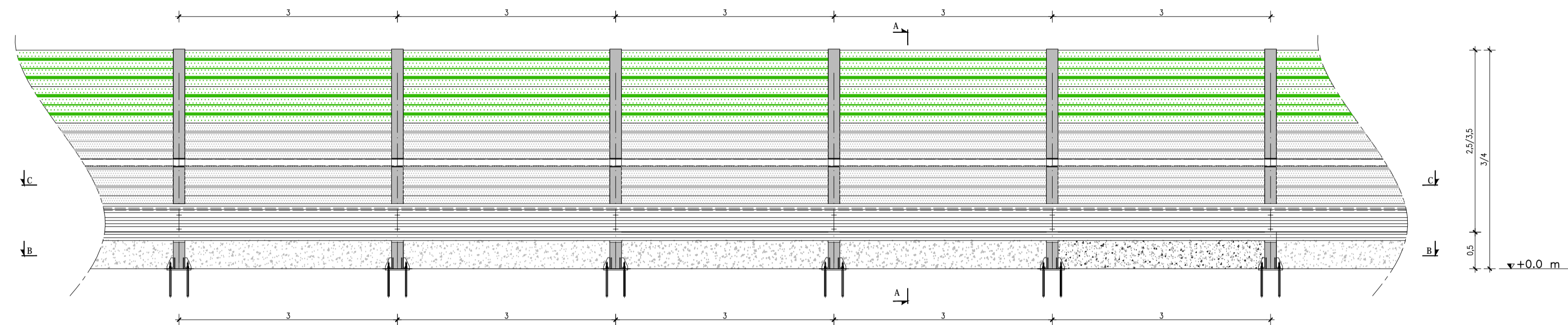
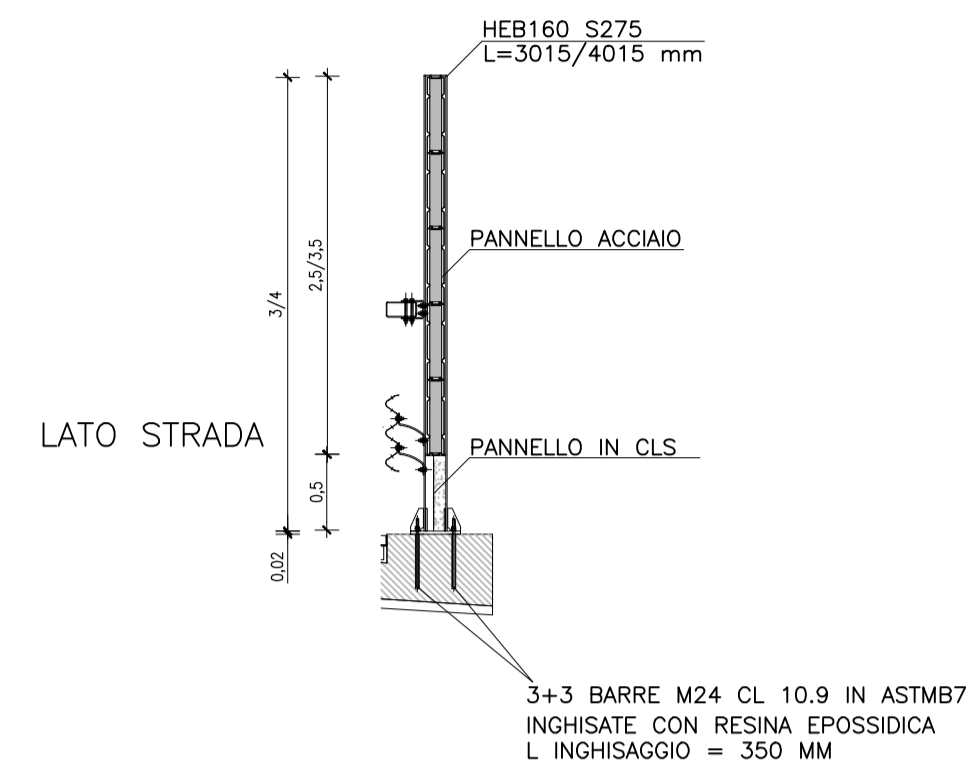


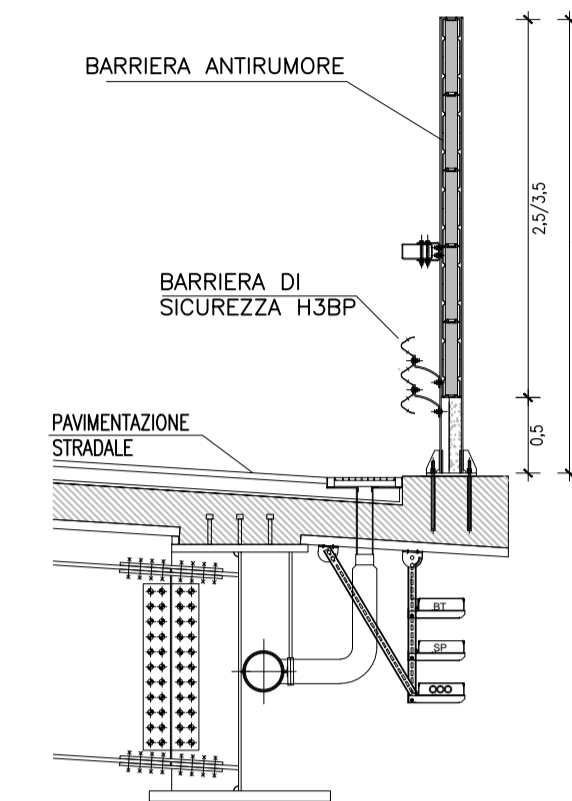
BARRIERA IN LEGNO SU OPERA H FUORI TERRA = 3m
SCALA 1:50



SEZIONE A-A
SCALA 1:50



POSIZIONAMENTO BARRIERA
SCALA 1:50



SEZIONE B-B



SEZIONE C-C

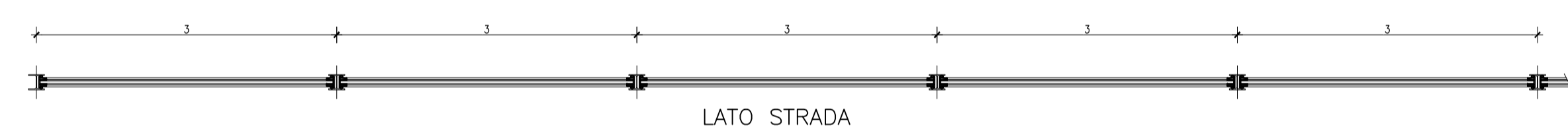
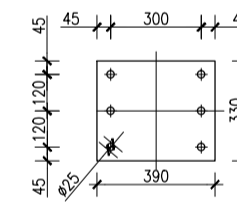
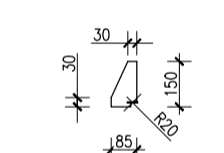


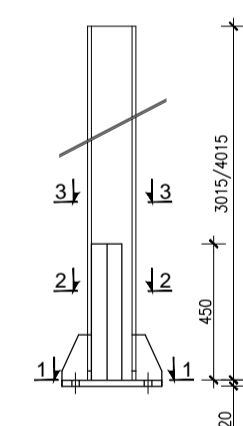
Tabella Barre Inghisate			
H Barriera [M]	L Barra [MM]	Diam. Barra [MM]	Ø Foro [MM]
3.00/4.00	350	M24	25

N° 8 Piatti sp. 10mm

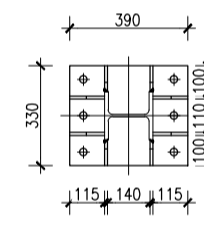


Piastra di ancoraggio 330x390x20 mm

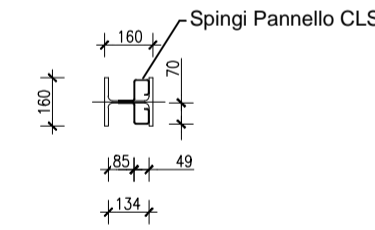
Colonna Scala 1:25
HEB160 L=3.015/4.014 m



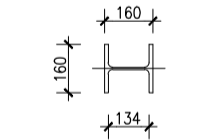
SEZIONE 1-1



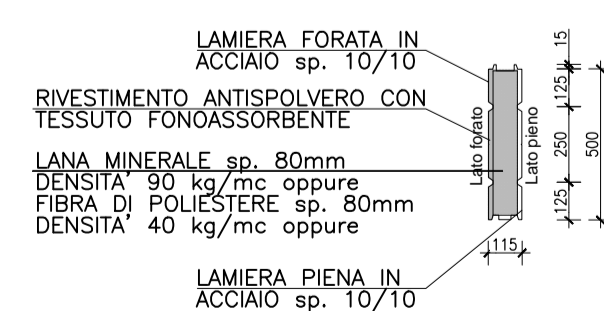
SEZIONE 2-2



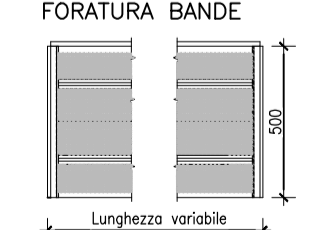
SEZIONE 3-3



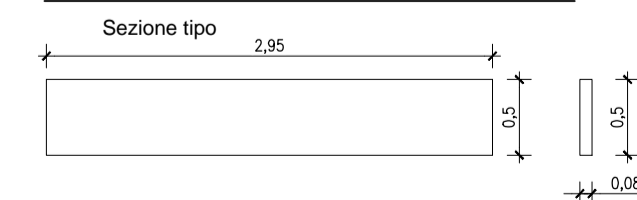
PANNELLO IN ACCIAIO
SEZIONE TIPO



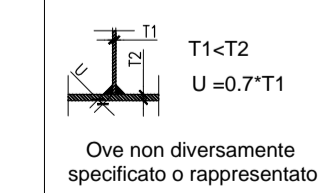
VISTA FRONTALE SCHEMA FORATURA BANDE



Pannello prefabbricato s=8 cm Rck40



Schema saldature



ANAS S.P.A.



AUTOSTRADA A4 - VARIANTE DI MESTRE

**PASSANTE
AUTOSTRADALE**

(L.443/2001 D.Lgs. 20.08.2002 N°190)

PROGETTO ESECUTIVO
C.U.P. D51804000060001

IL RESPONSABILE
DEL PROCEDIMENTO

GENERAL CONTRACTOR

Passante di Mestre s.c.p.a.

DIREZIONE LAVORI



PROGETTAZIONE ESECUTIVA



INTERVENTI DI MITIGAZIONE AMBIENTALE
CASELLO DI MARTELAGO-SCORZE' E VIABILITA' DI COLLEGAMENTO
BARRIERE FONDOASSORBENTI - TIPOLOGICO BARRIERA E SICURVIA SU OPERA H = 3-4 M

CODICE DOCUMENTO

ZLT.5E2.E2000.PE.TP.006.00

CODIFICA WBS

E2000

REV.	DATA	DESCRIZIONE	REDATTO	CONTROLLATO	APPROVATO	TAVOLA
00	06/14	EMMISSIONE UFFICIALE	SPONGA	ZANCHETTIN	ZOLLET	E2000.PE.TP.006
01						SCALA
02						VARIE
03						GAD
04						ACAD2004
NOME FILE						ZLT.5E2.E2000.PE.TP.006.00.dwg