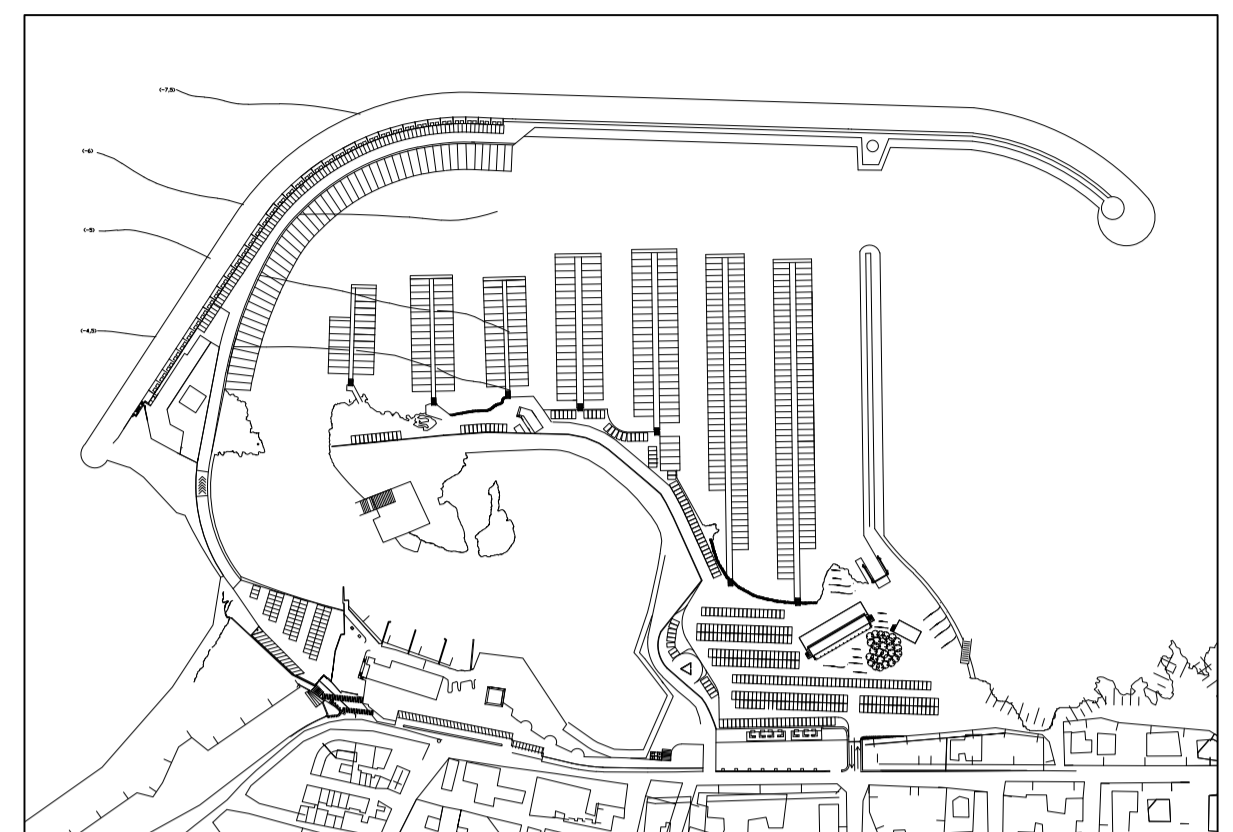


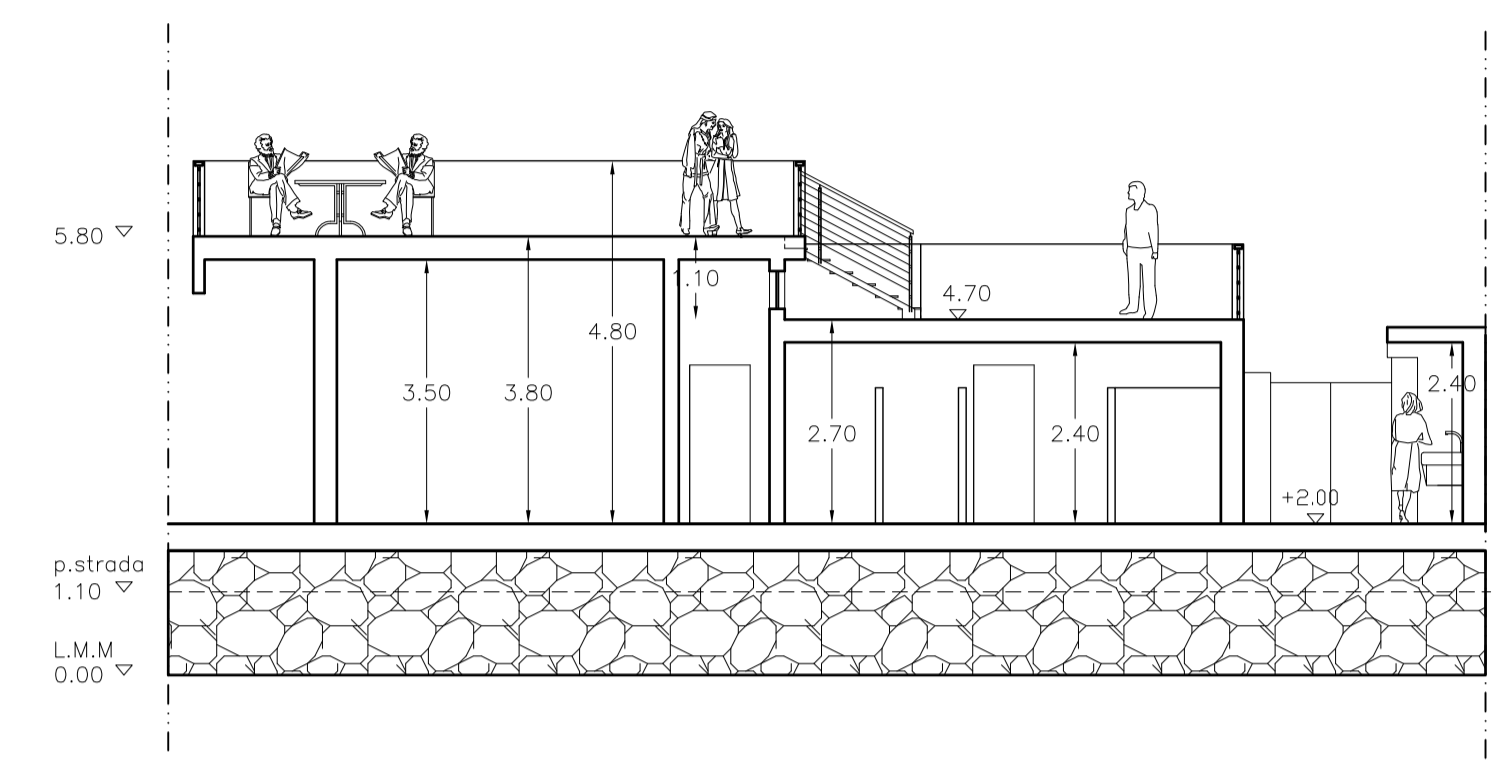
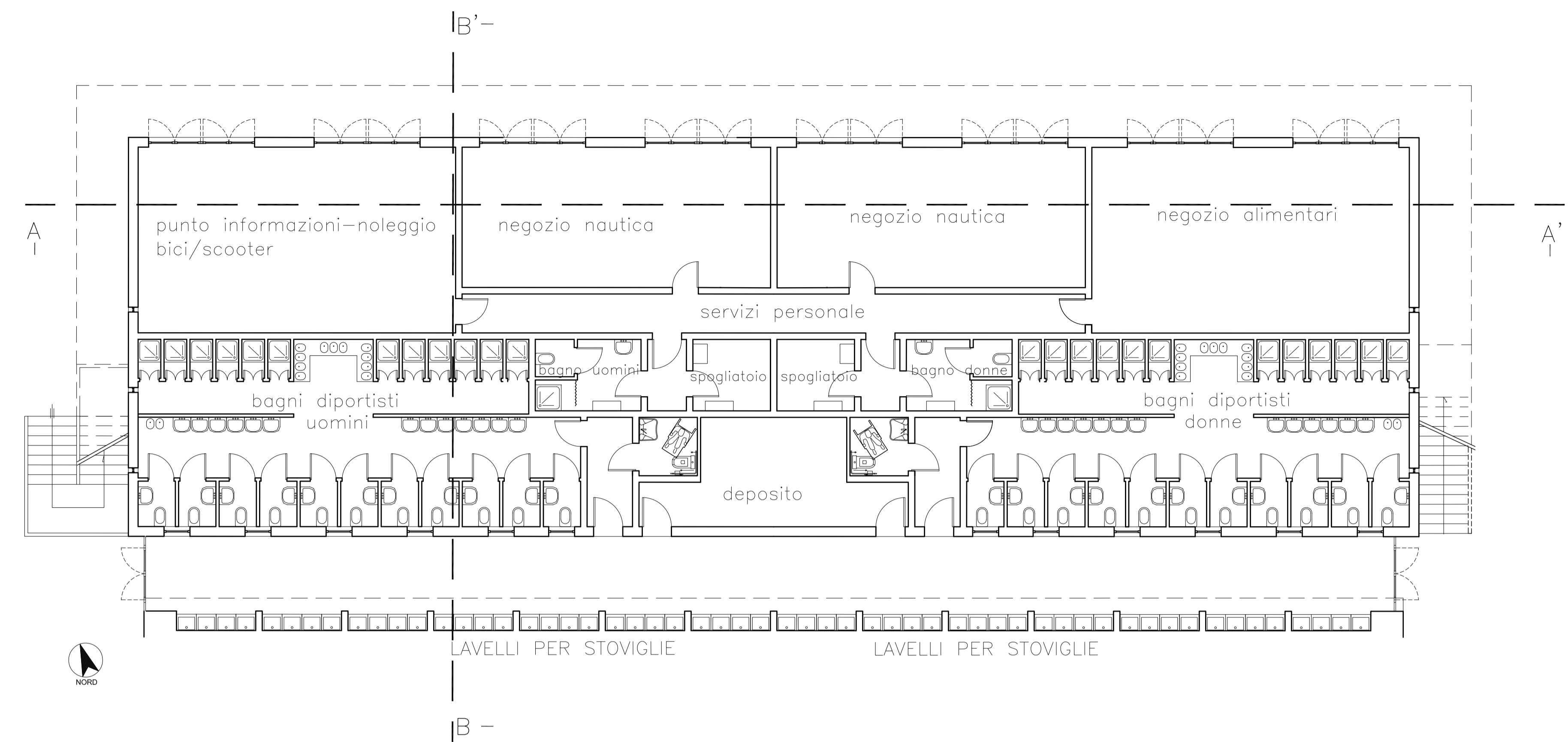
COMUNE DI MELENDUGNO Frazione San Foca  
**REGIONE PUGLIA**  
**PORTO DI SAN FOCA S.P.A.**  
 Porto Turistico-Stazionamento  
 PROGETTO DEFINITIVO PER L'AMPLIAMENTO E COMPLETAMENTO  
 DEL PORTO DI SAN FOCA ADEGUATO ALLE RISULTANZE DELLE  
 PROVE SUL MODELLO FISICO REALIZZATO DAL POLITECNICO DI BARI



**ATTIVITA' ARTIGIANE E COMMERCIALI**  
 Pianta - prospetti e sezioni

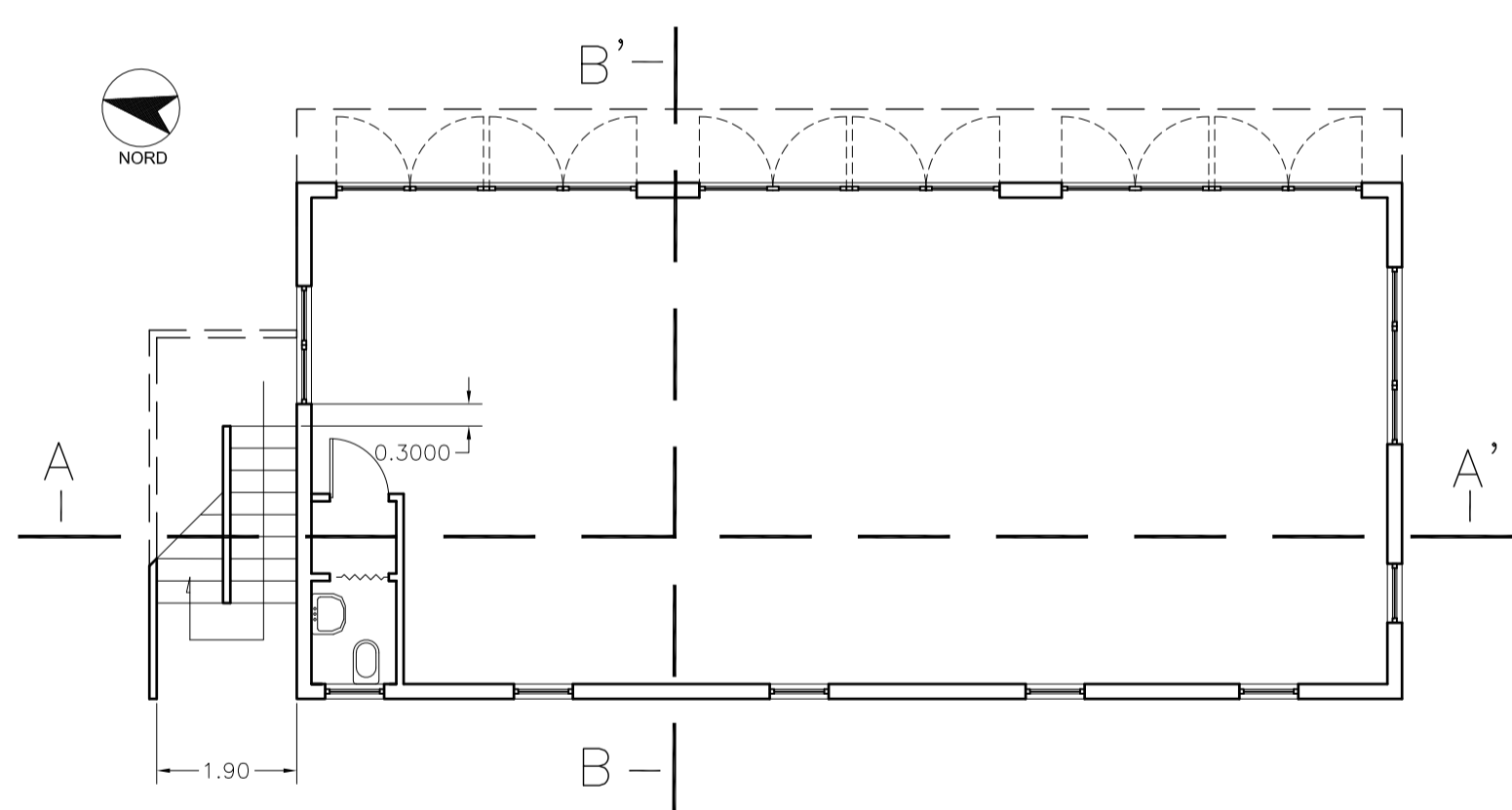
PROGETTISTI  
 Ing. Antonio Candido Ing. Donato Candido Ing. Luigi Del Grosso Ing. Franco Gallo

SETTEMBRE 2018 TAV. A3 Rev.

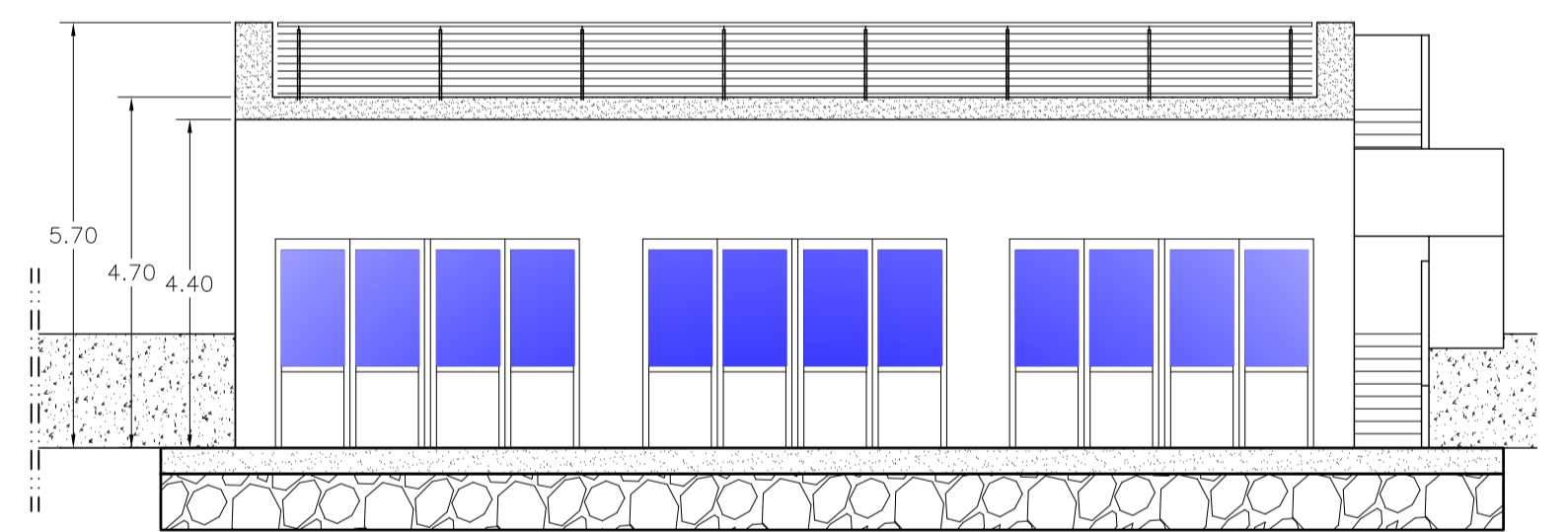


Sezione B-B' - Scala 1:100

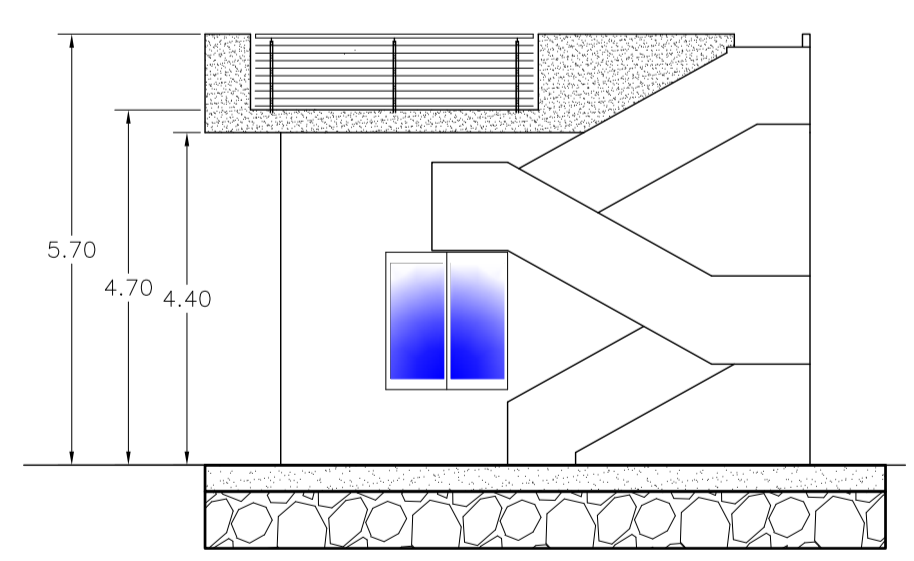
Pianta Edificio - Scala 1:100



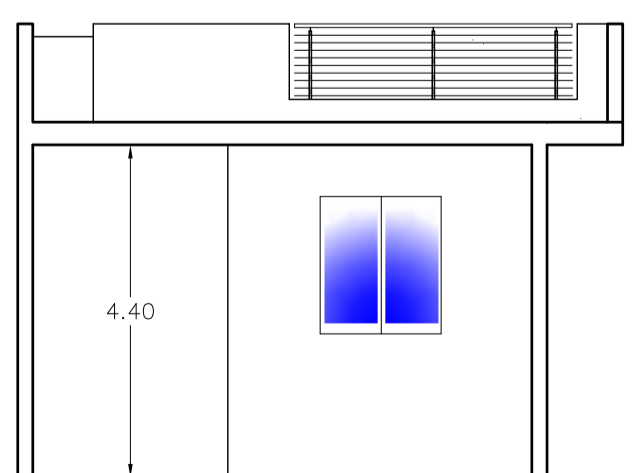
Pianta officina - Scala 1:100



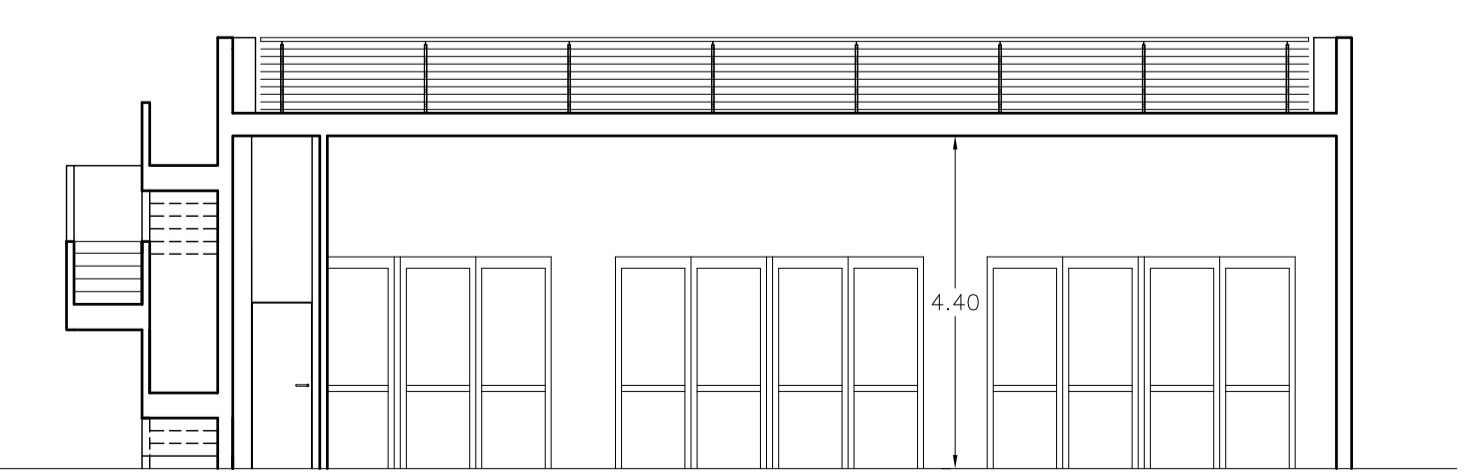
Prospetto Est officina Scala 1:100



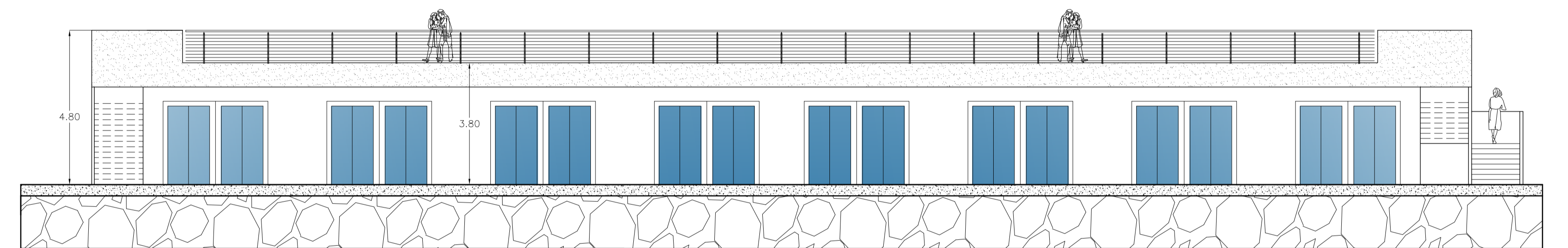
Prospetto Nord officina - Scala 1:100



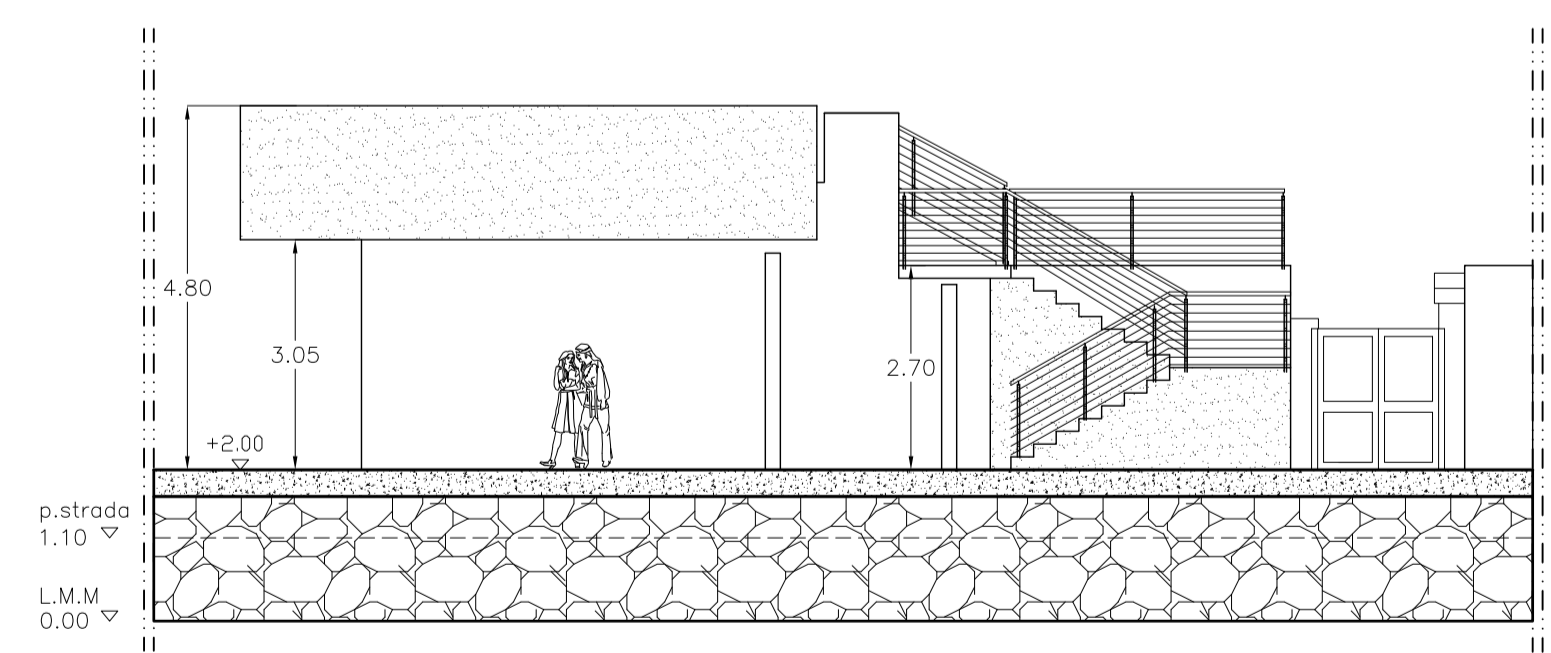
Sezione B-B' - Officina  
 Scala 1:100



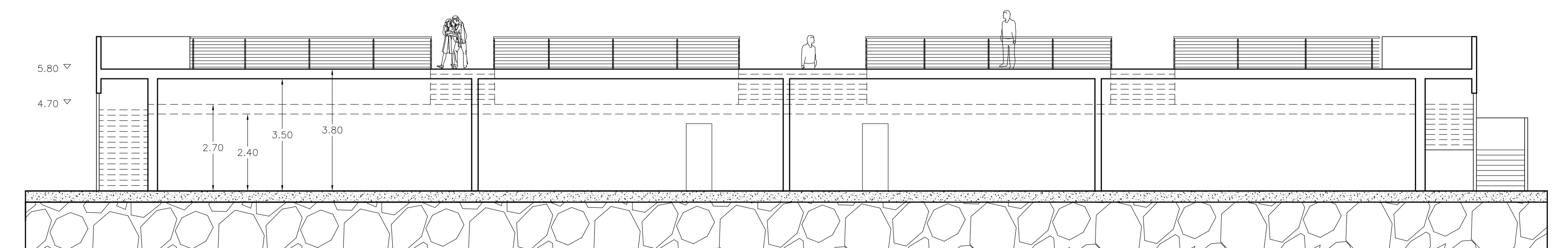
Sezione A-A' - Officina  
 Scala 1:100



Prospetto Nord Edificio - Scala 1:100



Prospetto Ovest Edificio - Scala 1:100



Sezione A-A' Edificio - Scala 1:100