

Comune
di Partanna



REGIONE
SICILIANA



Comune
di Castelvetro



COMMITTENTE:



E.ON CLIMATE & RENEWABLES ITALIA S.R.L.
via A. Vespucci, 2 - 20124 Milano
P.IVA/C.F. 06400370968
pec: e.onclimateerenewablesitaliasrl@legalmail.it

Titolo del Progetto:

PARCO EOLICO SELINUS

Documento:

PROGETTO DEFINITIVO

N° Documento:

PESE-P-0113

ID PROGETTO:	PESE	DISCIPLINA:	P	TIPOLOGIA:	R	FORMATO:	A4
--------------	-------------	-------------	----------	------------	----------	----------	-----------

TITOLO:

Schede informative Viabilità interna al parco

FOGLIO:

FILE:

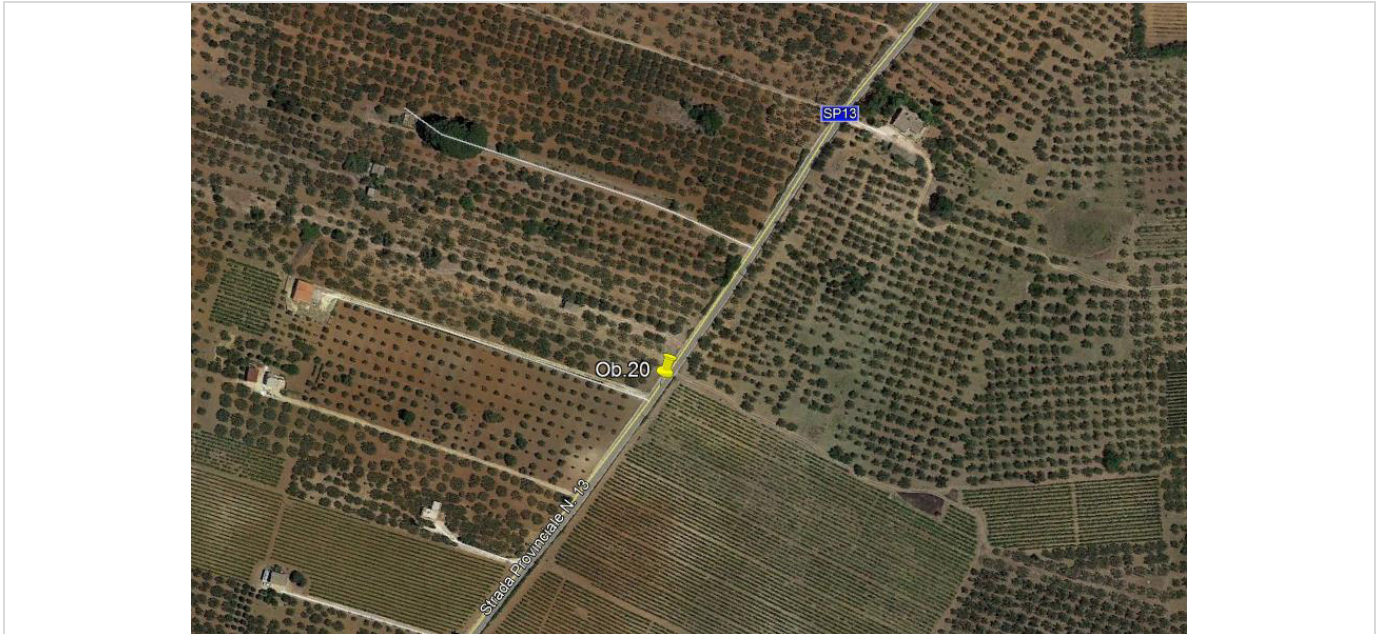
PESE-P-0113_00.dwg

Il Progettista:

dott. ing. Riccardo Cangelosi



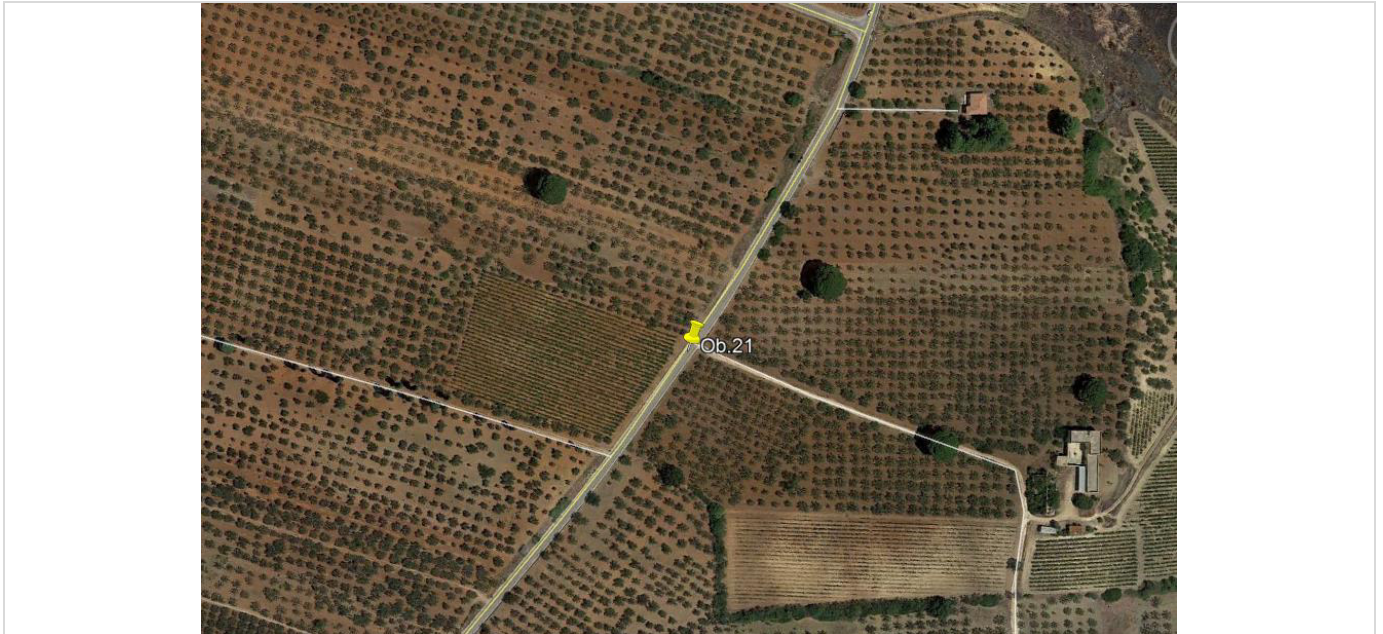
Rev:	Data Revisione	Descrizione Revisione	Redatto	Controllato	Approvato
00	10/09/2018	PRIMA EMISSIONE	Cangelosi	Cangelosi	ECRI



OB.20

Coord. 37°39'36.69"N - 12°52'04.21"E

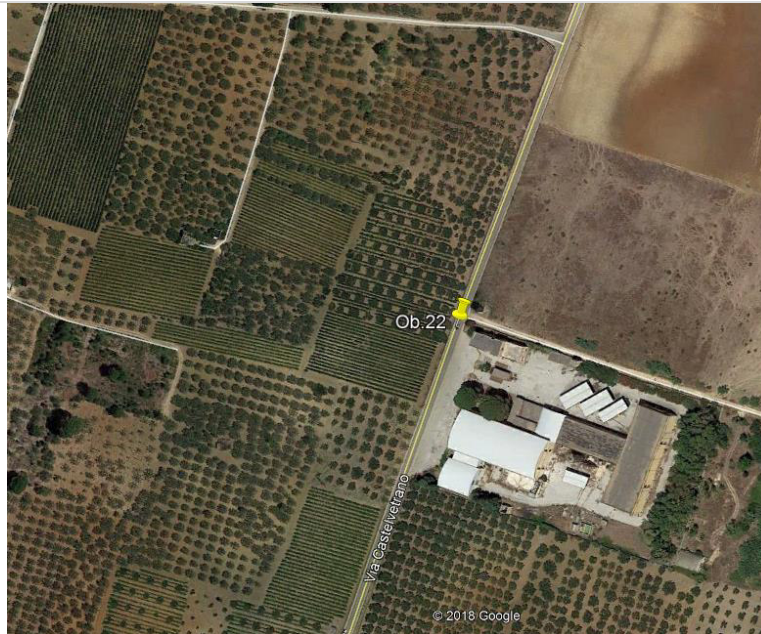
Access to site 1
Realize as per the Gamesa specifications



OB.21

Coord. 37°39'48.35"N - 12°52'15.49"E

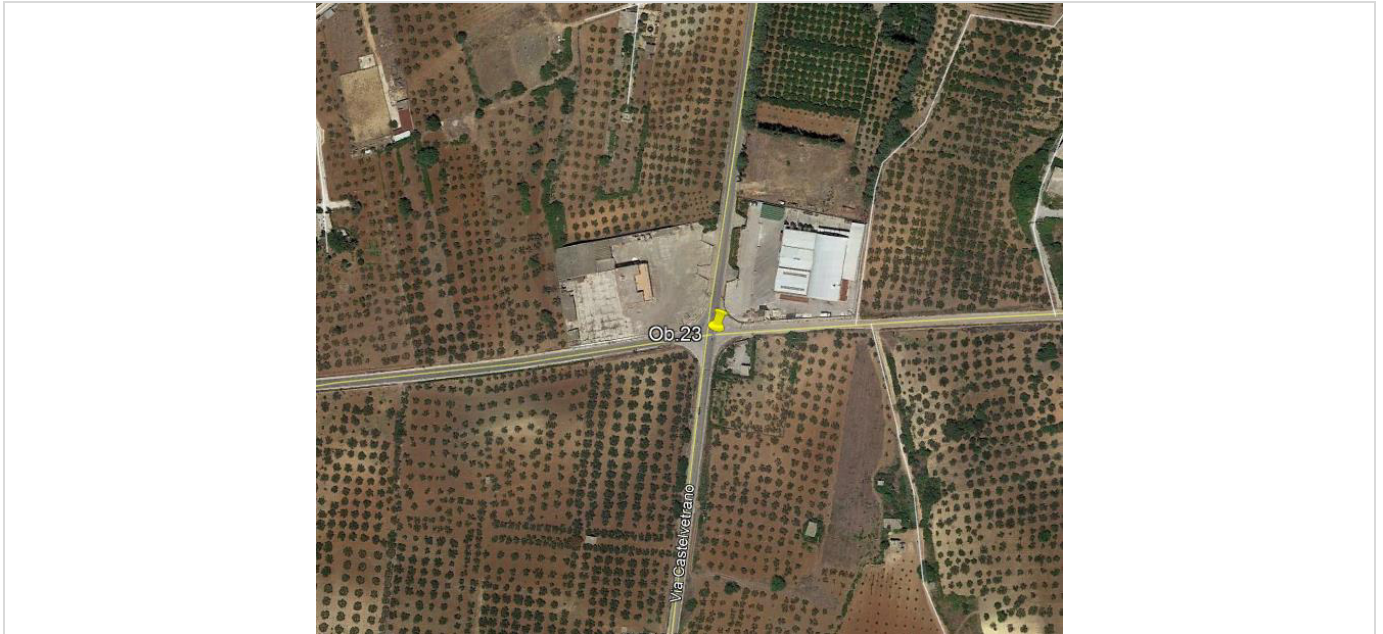
Access to site 2
Realize as per the Gamesa specifications



OB.22

Coord. 37°40'13.90"N - 12°52'28.64"E

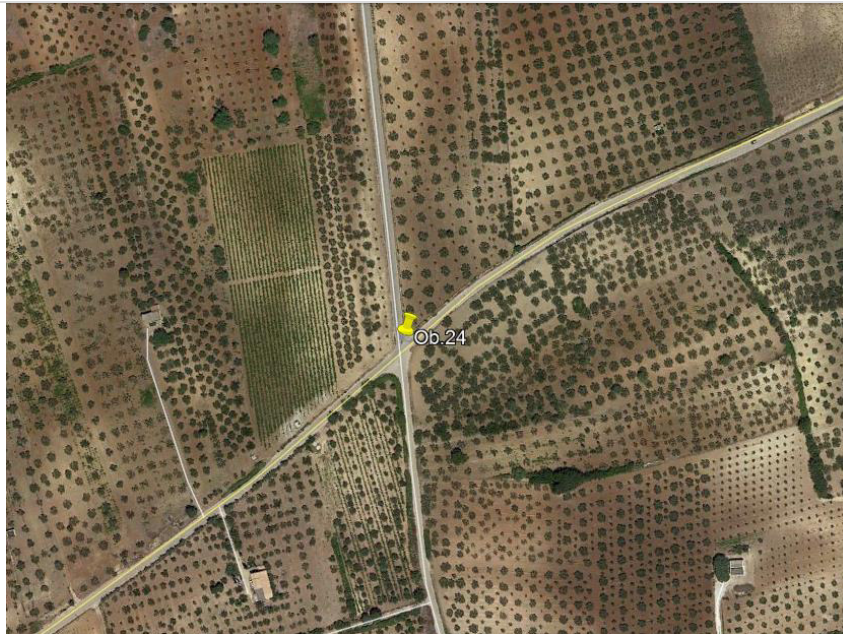
Make a transshipment area for blades and towers.
From this point it is necessary to use the blade lifter and special semi-trailers



OB.23

Coord. 37°41'20.77"N - 12°52'53.34"E

Remove cable.



OB.24

Coord. 37°41'41.49"N - 12°53'40.85"E

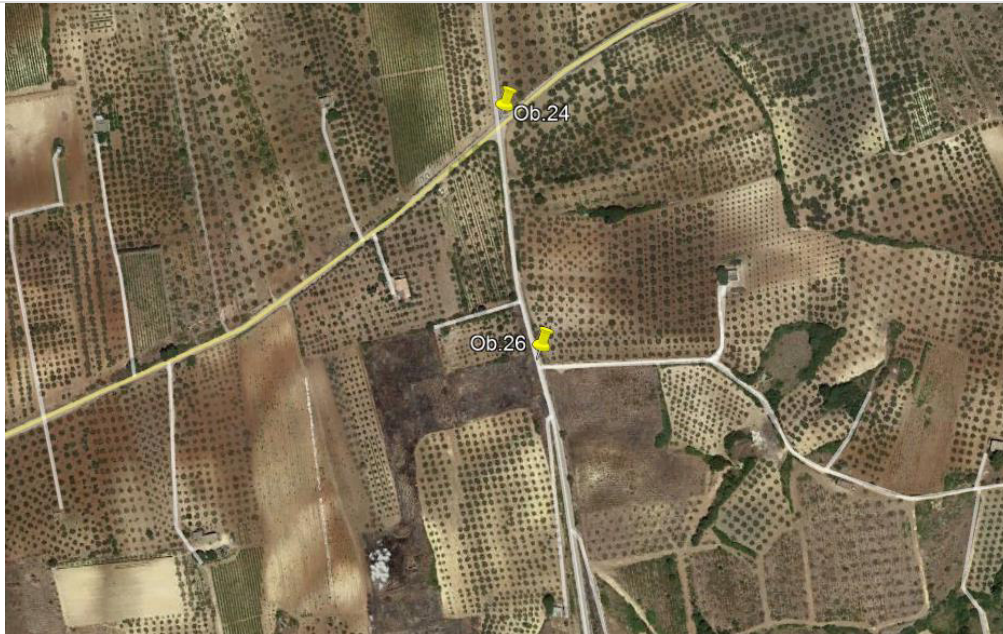
Making enlargement
Turning area



OB.25

Coord. 37°41'57.49"N - 12°53'37.80"E

Access to site 3
Realize as per the Gamesa specifications



OB.26

Coord. 37°41'34.63"N - 12°53'42.17"E

Access to site 4
Realize as per the Gamesa specifications



OB.27

Coord. 37°41'24.15"N - 12°53'09.16"E

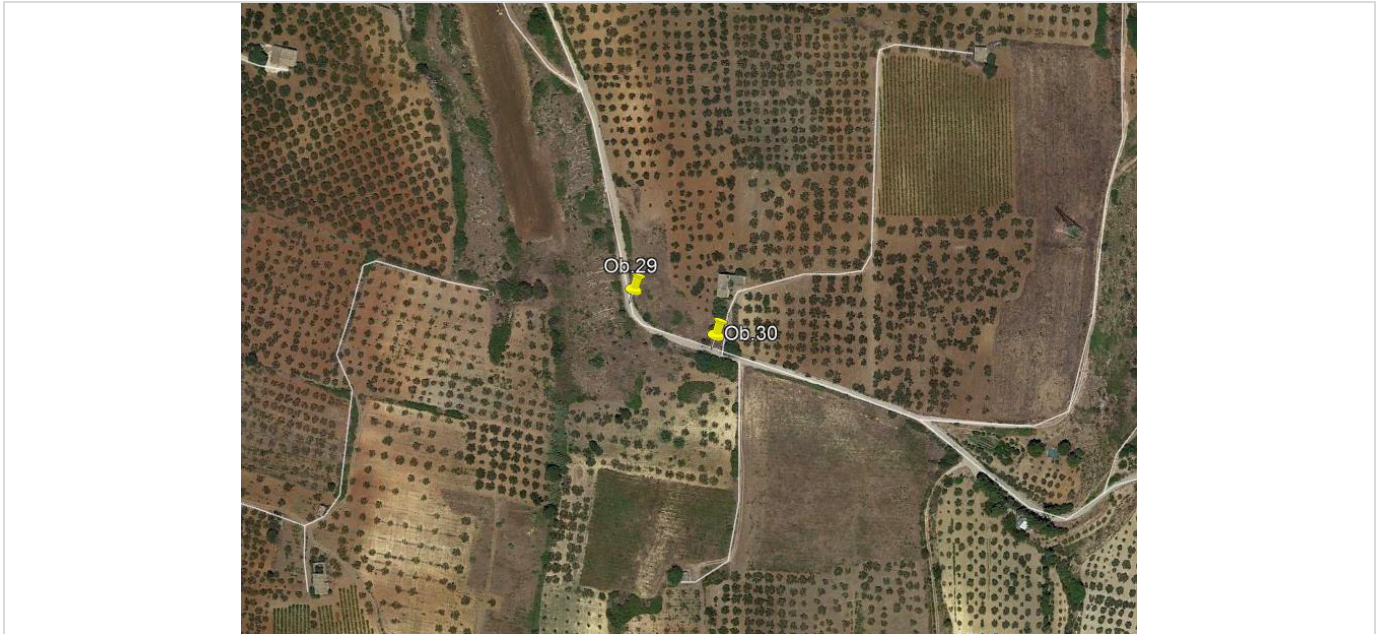
Access to site 5
Realize as per the Gamesa specifications



OB.28

Coord. 37°412'21.16"N - 12°53'3.44"E

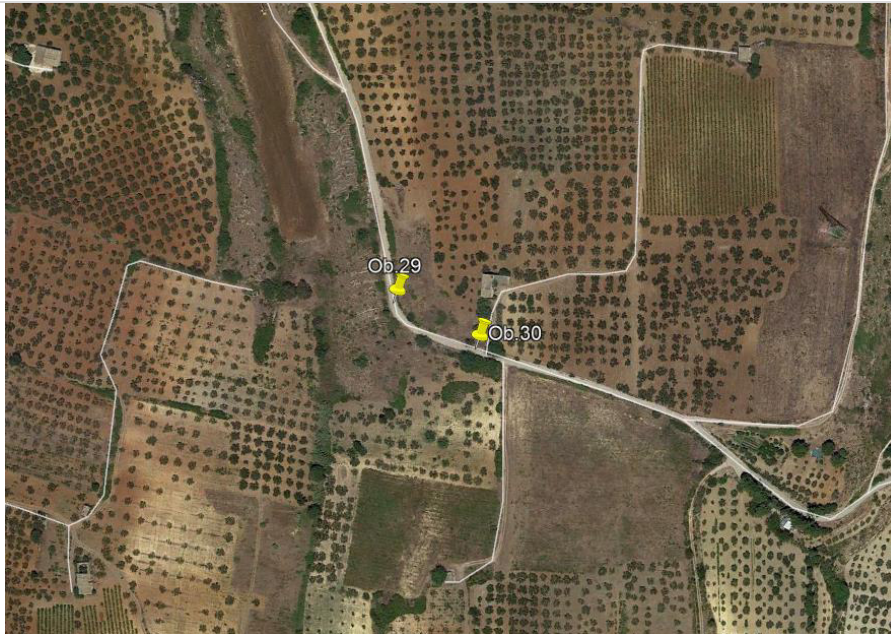
Road forbidden to transit heavy vehicles



OB.29

Coord. 37°40'49.52"N - 12°53'02.85"E

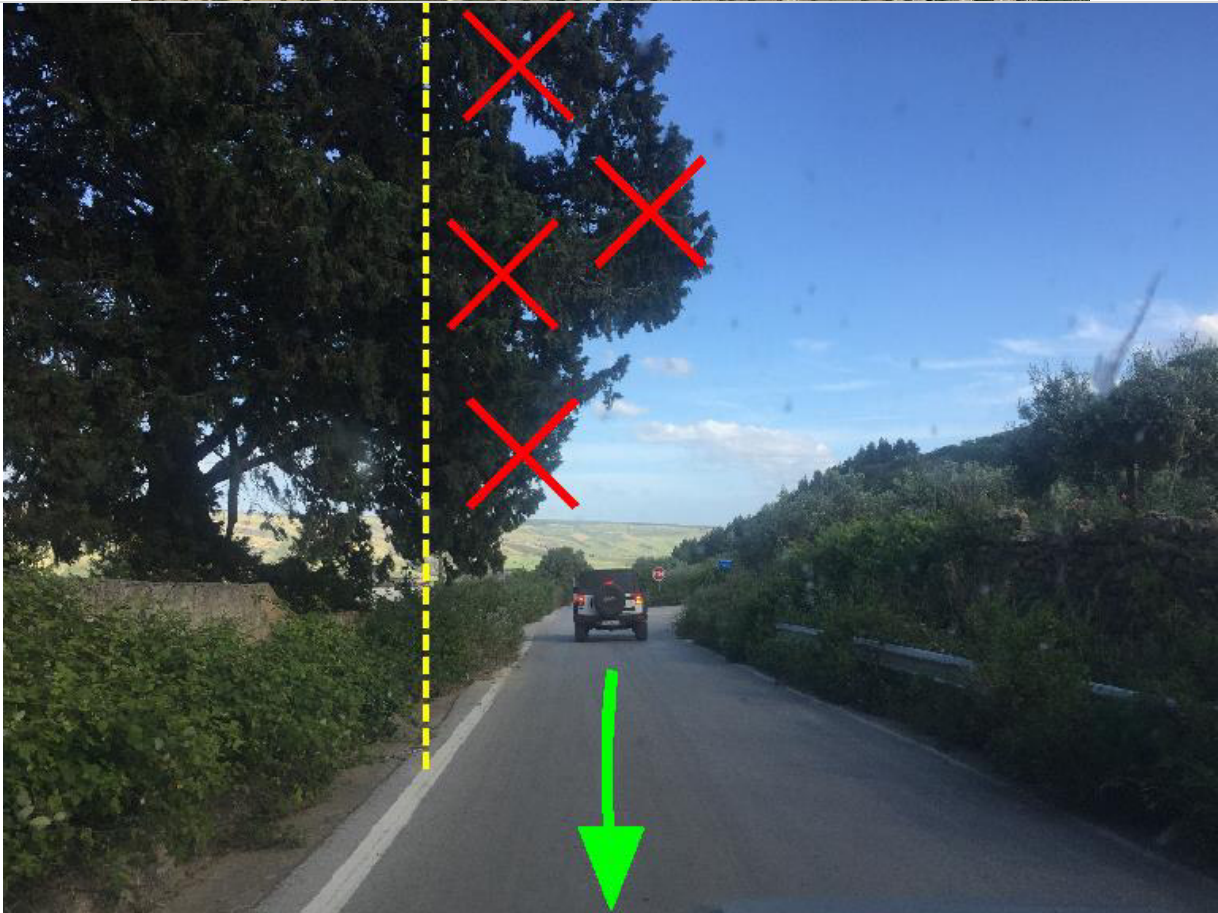
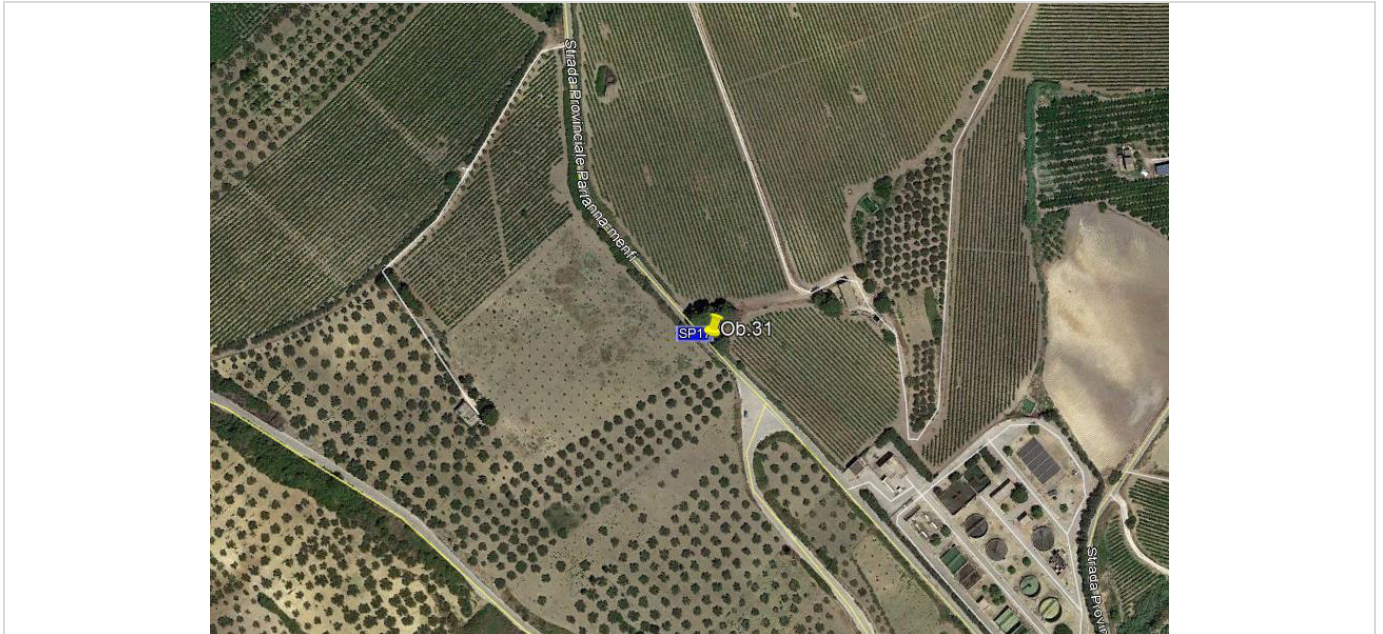
Make an enlargement 3 mt on left side



OB.30

Coord. 37°40'48.61"N - 12°53'04.949"E

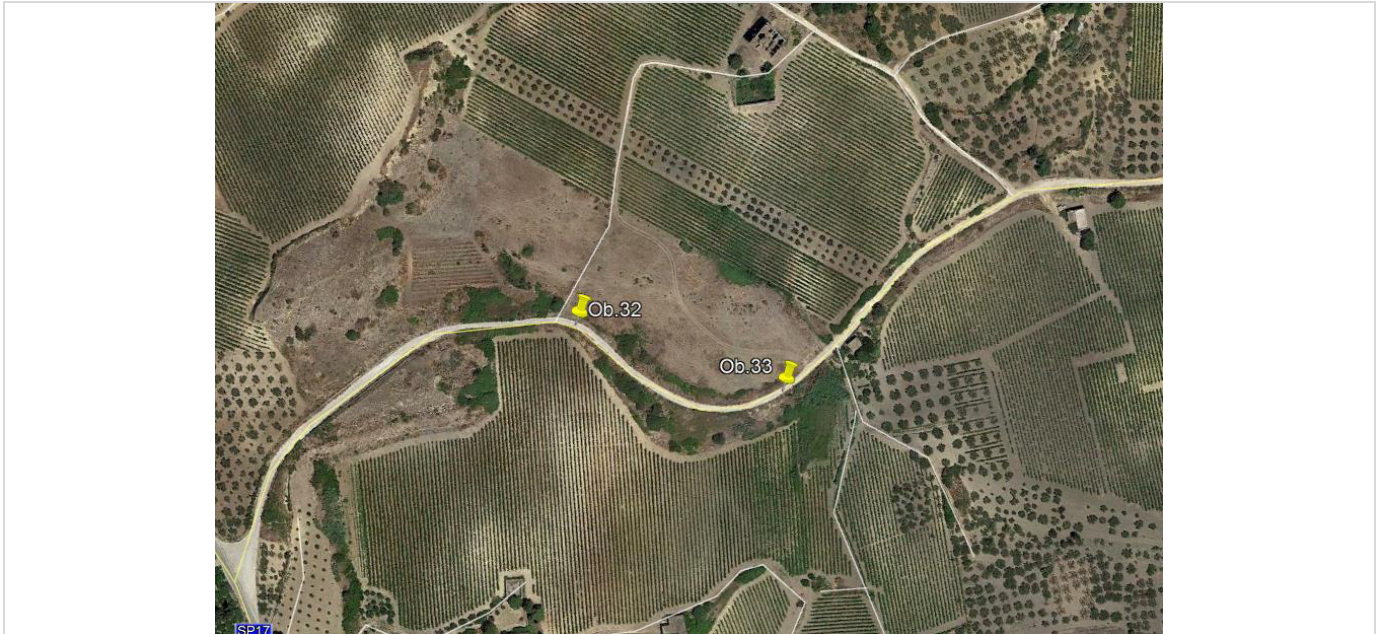
Cut the protruding vegetation on the road.
Access to site 6
Realize as per the Gamesa specifications



OB.31

Coord. 37°41'49.76"N - 12°54'11.68"E

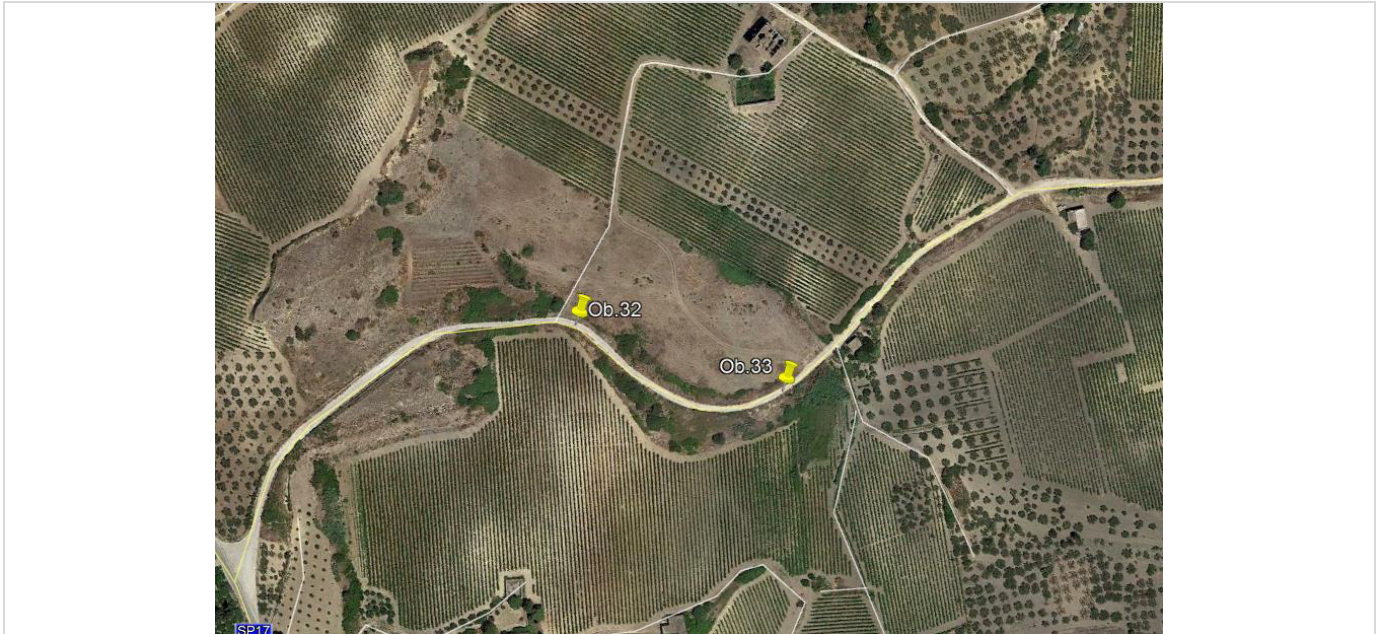
On the whole stretch it is necessary to cut the protruding vegetation on the road



OB.32

Coord. 37°42'05.41"N - 12°54'15.89"E

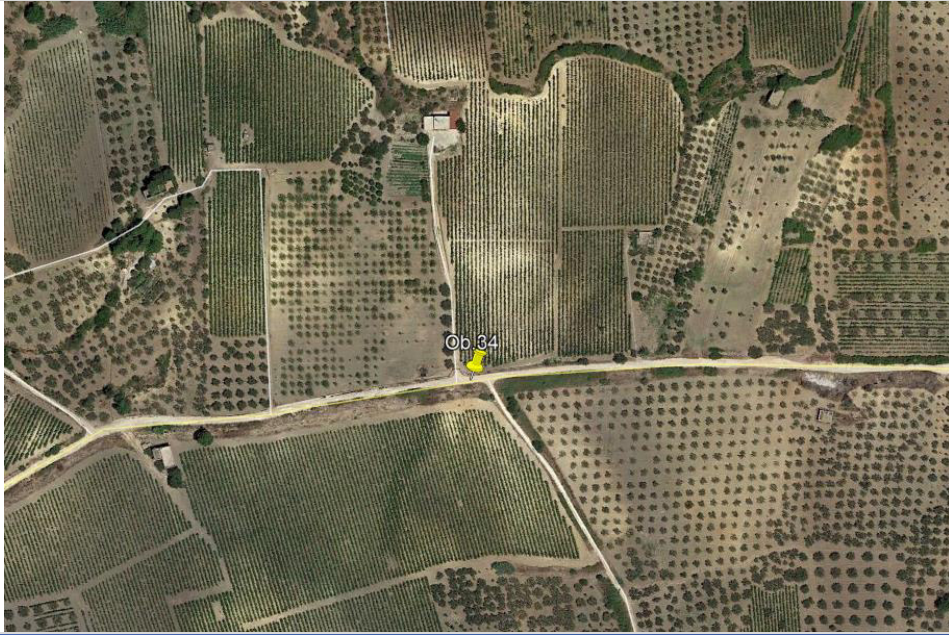
Remove the cable as shown.



OB.33

Coord. 37°42'04.09"N - 12°54'21.07"E

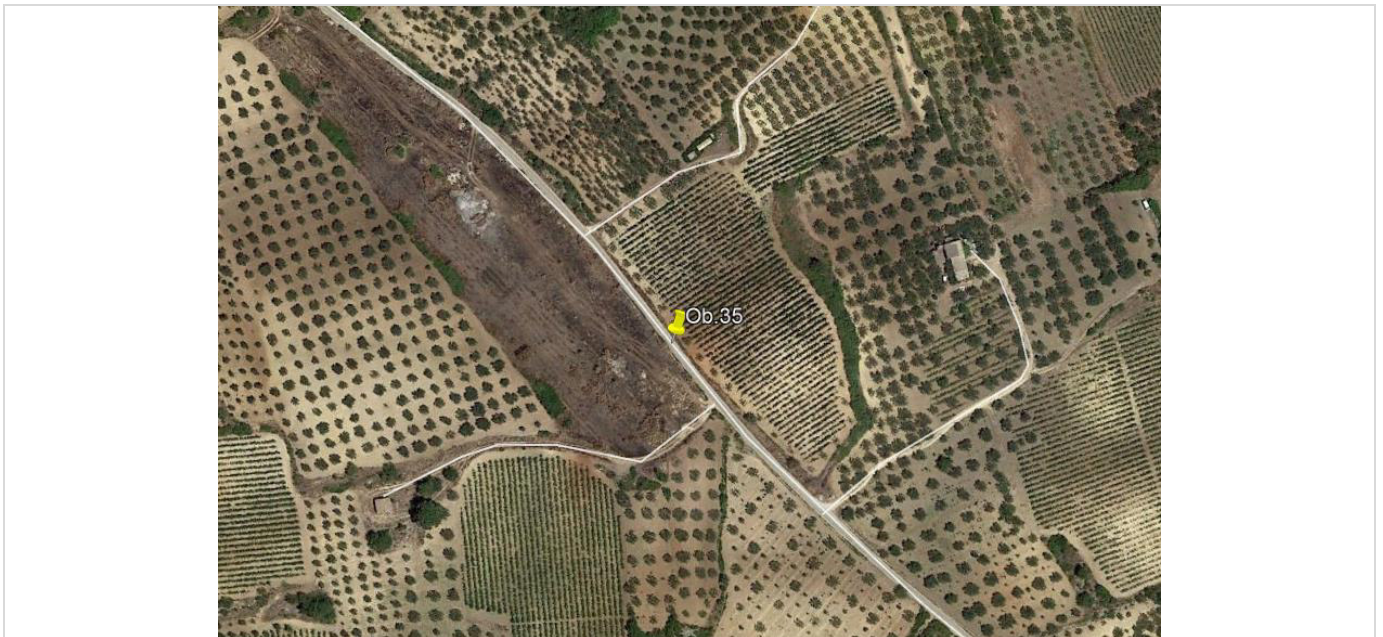
Access to site 7
Realize as per the Gamesa specifications



OB.34

Coord. 37°42'09.07"N - 12°54'36.30"E

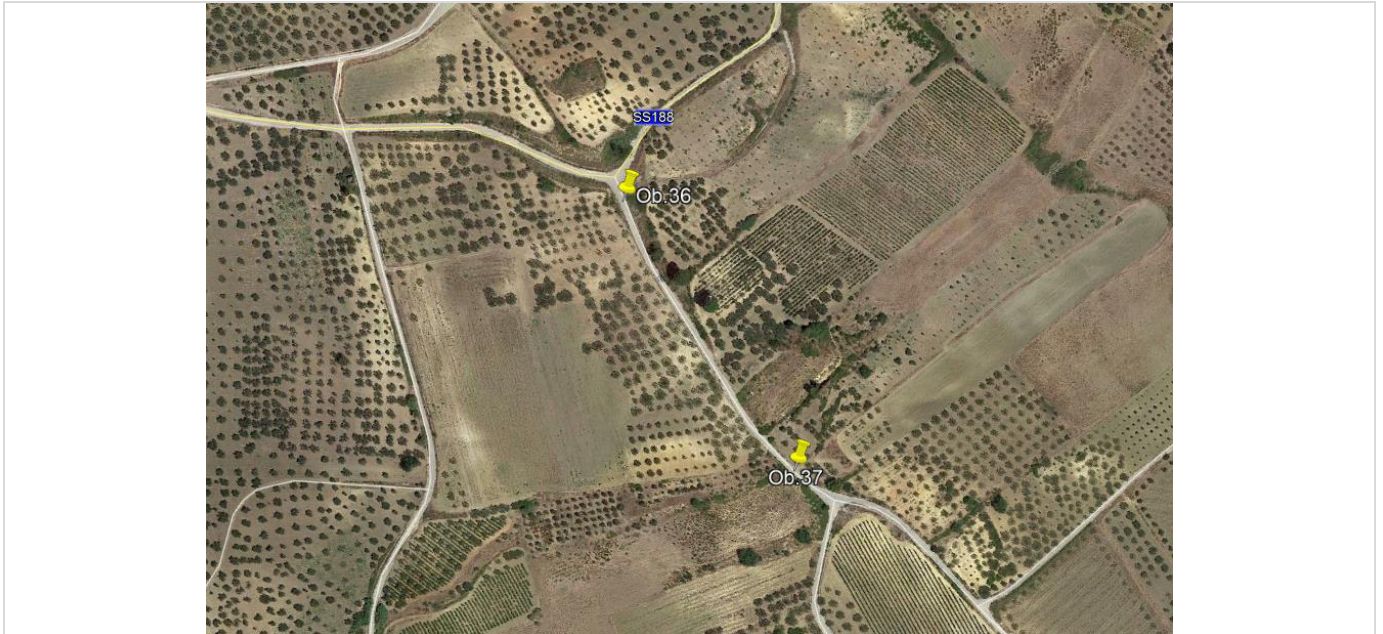
Access to site 8
Realize as per the Gamesa specifications



OB.35

Coord. 37°42'21.91"N - 12°54'45.66"E

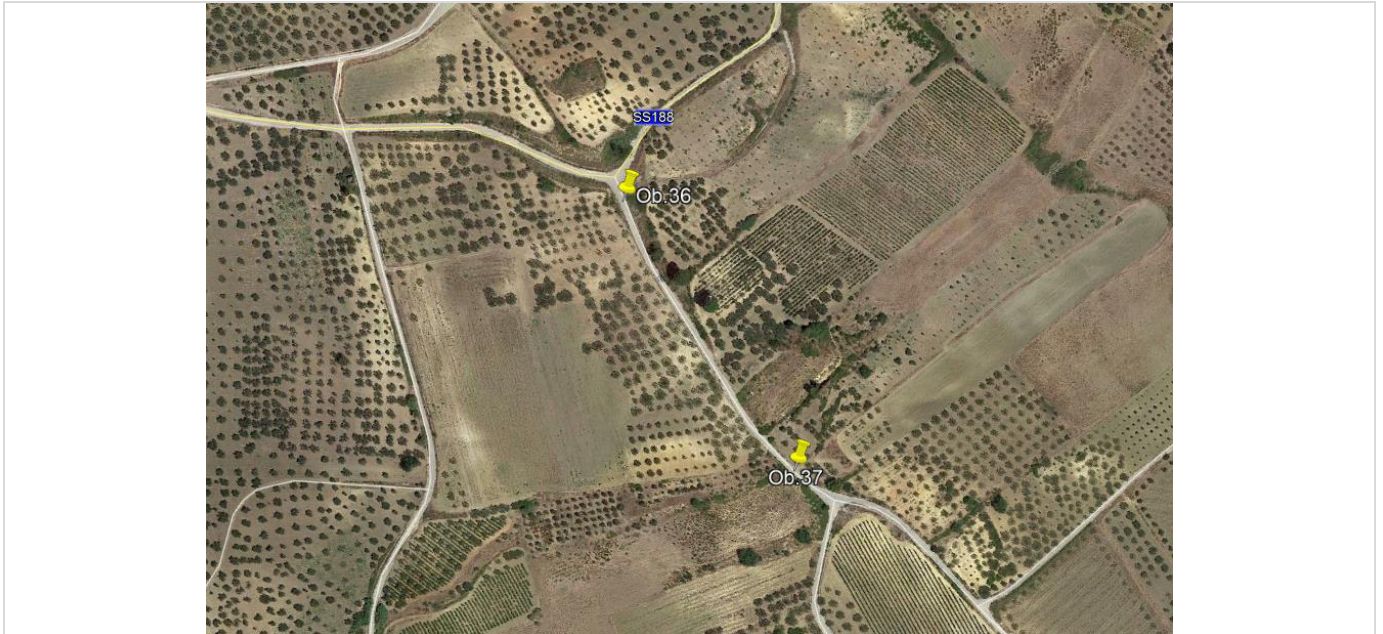
Access to site 9
Realize as per the Gamesa specifications



OB.36

Coord. 37°42'07.28"N - 12°55'02.06"E

Make an enlargement as shown



OB.37

Coord. 37°42'01.77"N - 12°55'06.57"E

Access to site 10
Realize as per the Gamesa specifications