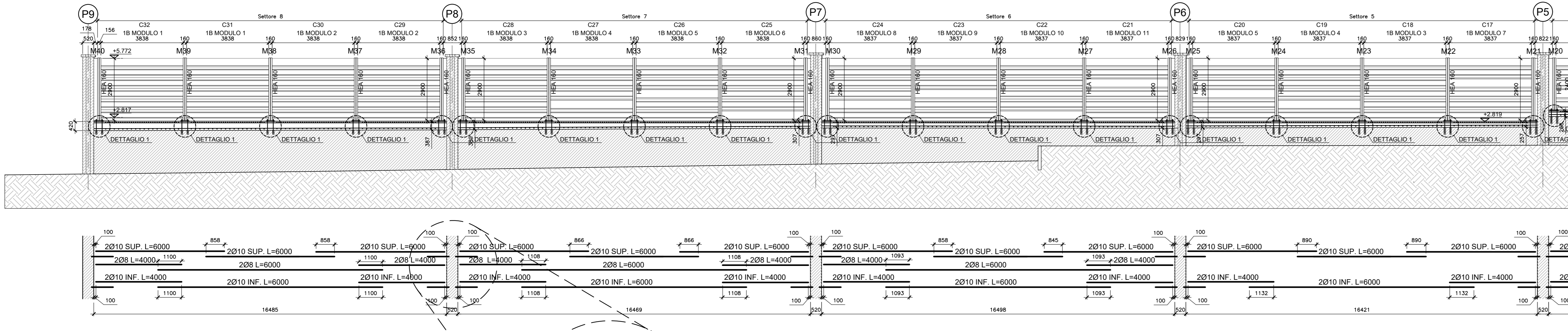


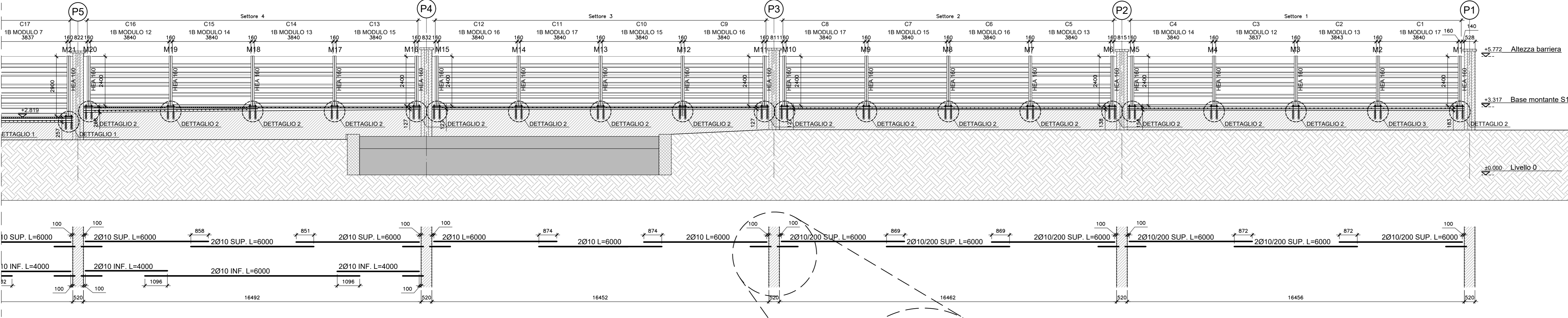
PROSPETTO LATO STRADA S2

Scala 1:100



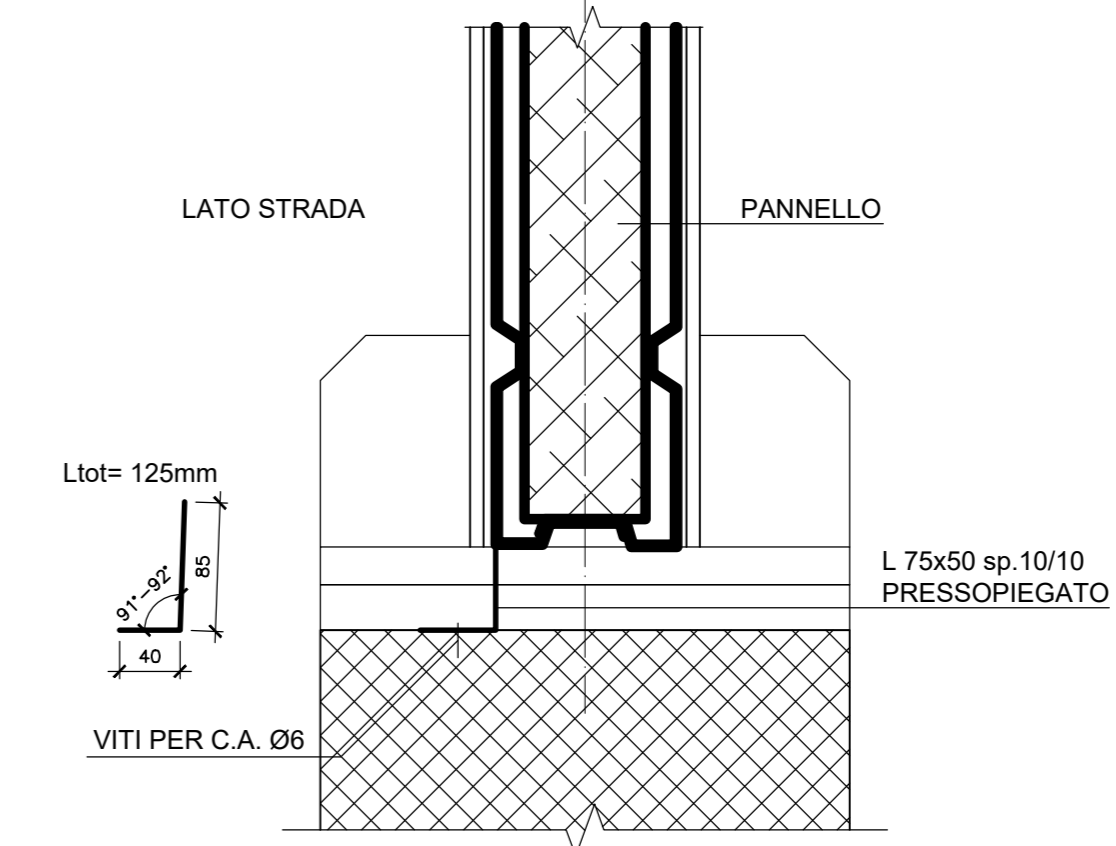
PROSPETTO LATO STRADA S1

Scala 1:100



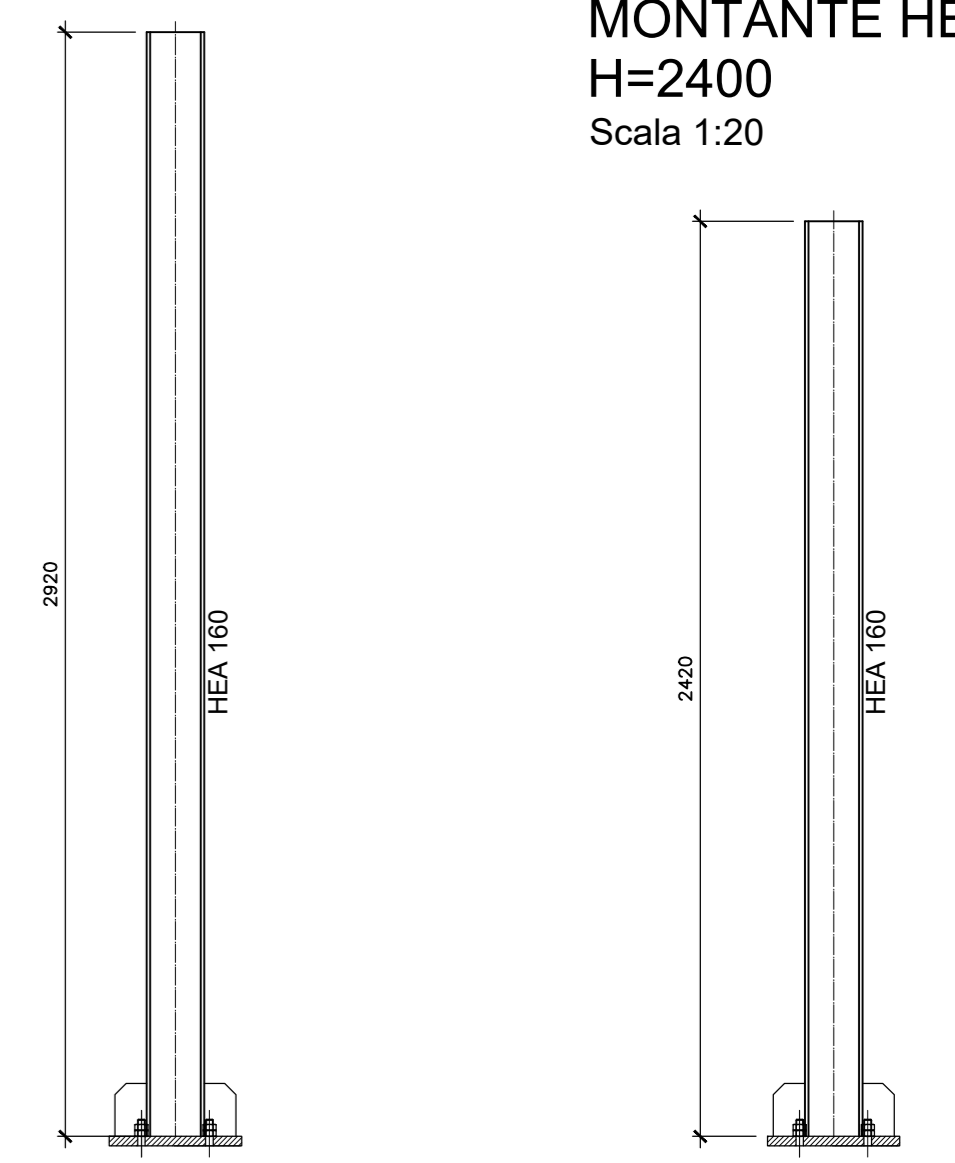
DETTAGLIO "L" DI BASE

Scala 1:5



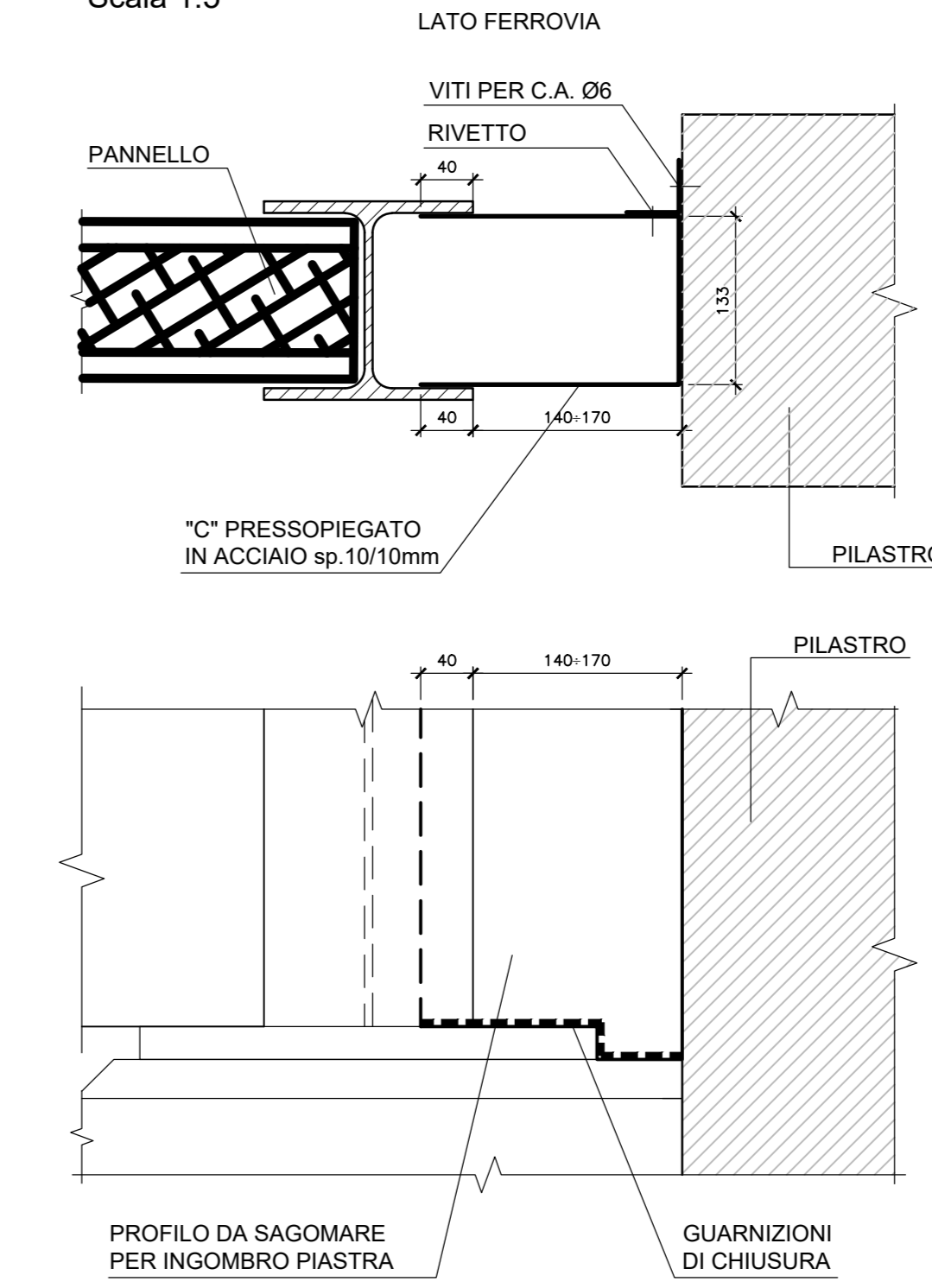
MONTANTE HEA 160
H=2900
Scala 1:20

MONTANTE HEA 160
H=2400
Scala 1:20



DETTAGLIO "C" DI CHIUSURA

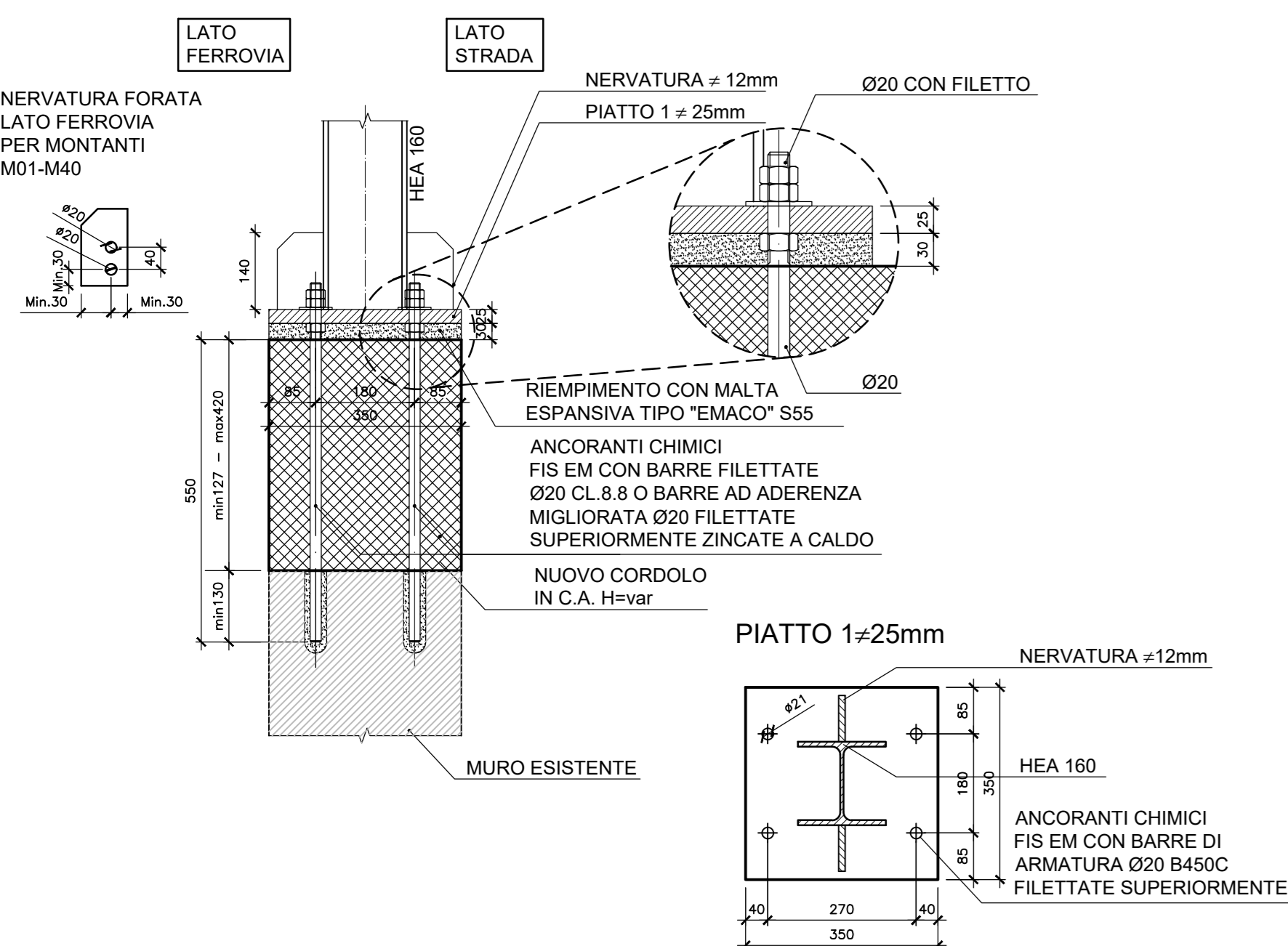
Scala 1:5



DETTAGLIO 1

MONTANTE HEA 160 H=2900

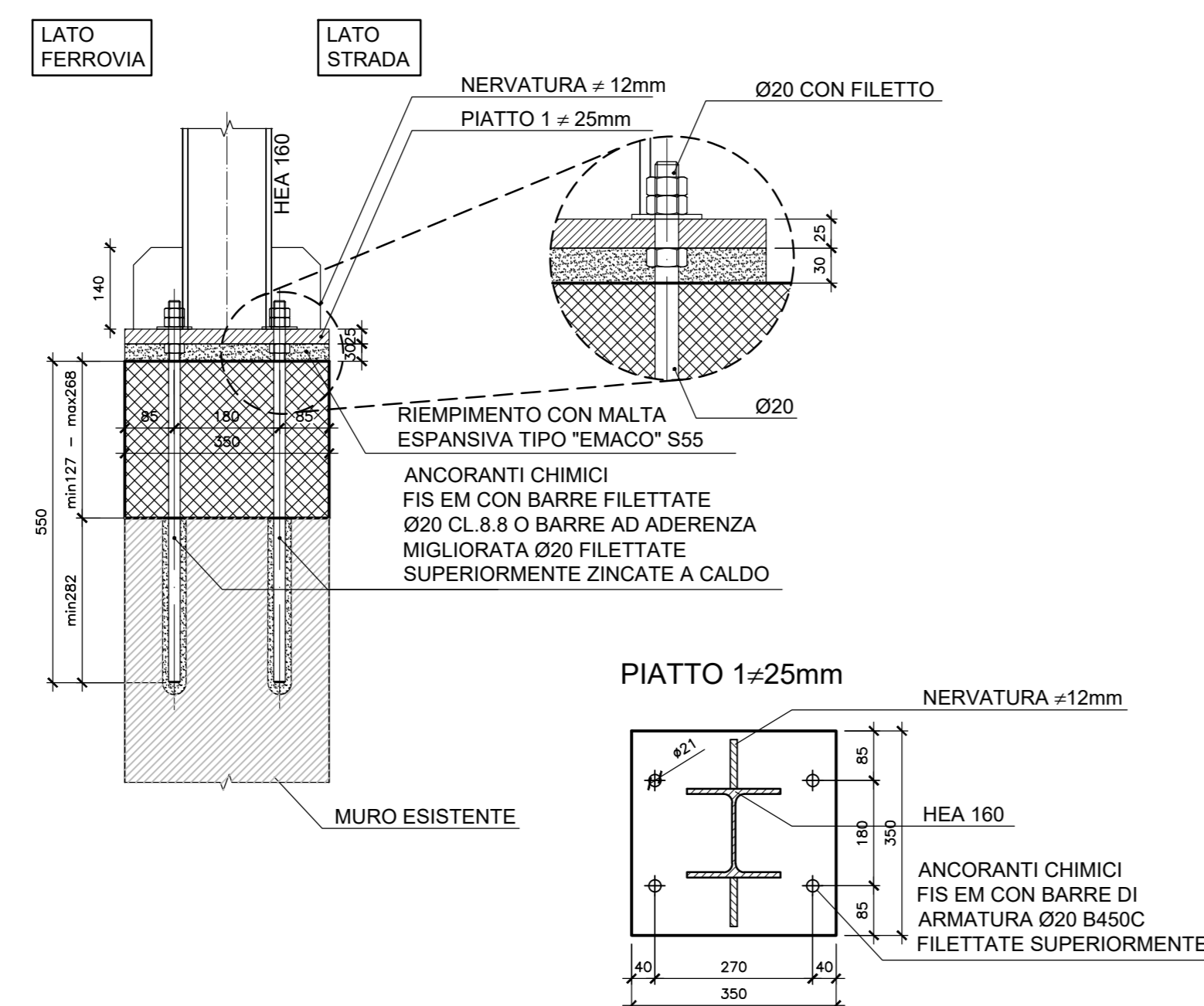
Scala 1:10



DETTAGLIO 2

MONTANTE HEA 160 H=2400

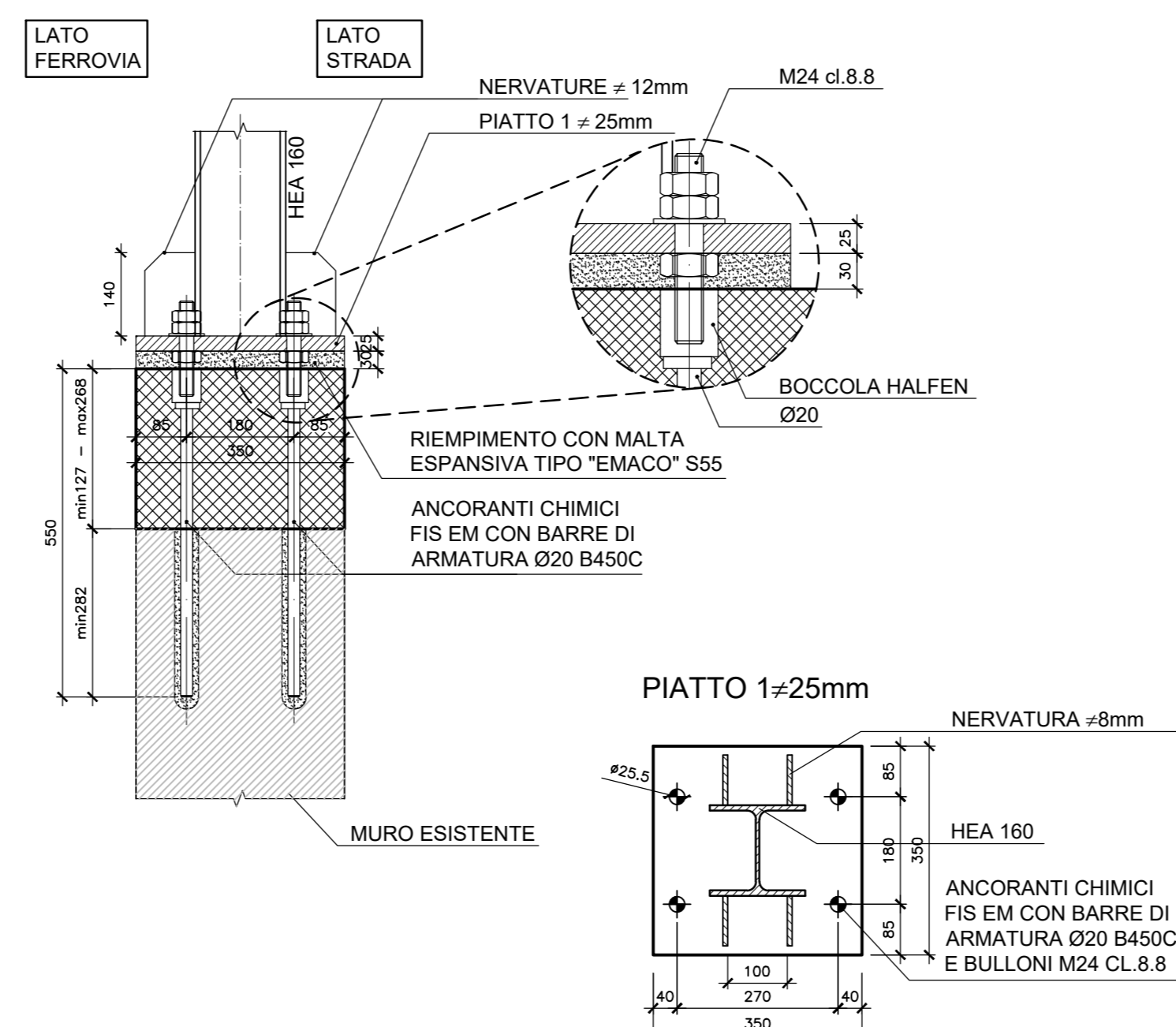
Scala 1:10



DETTAGLIO 3

MONTANTE "M2" HEA 160 H=2400

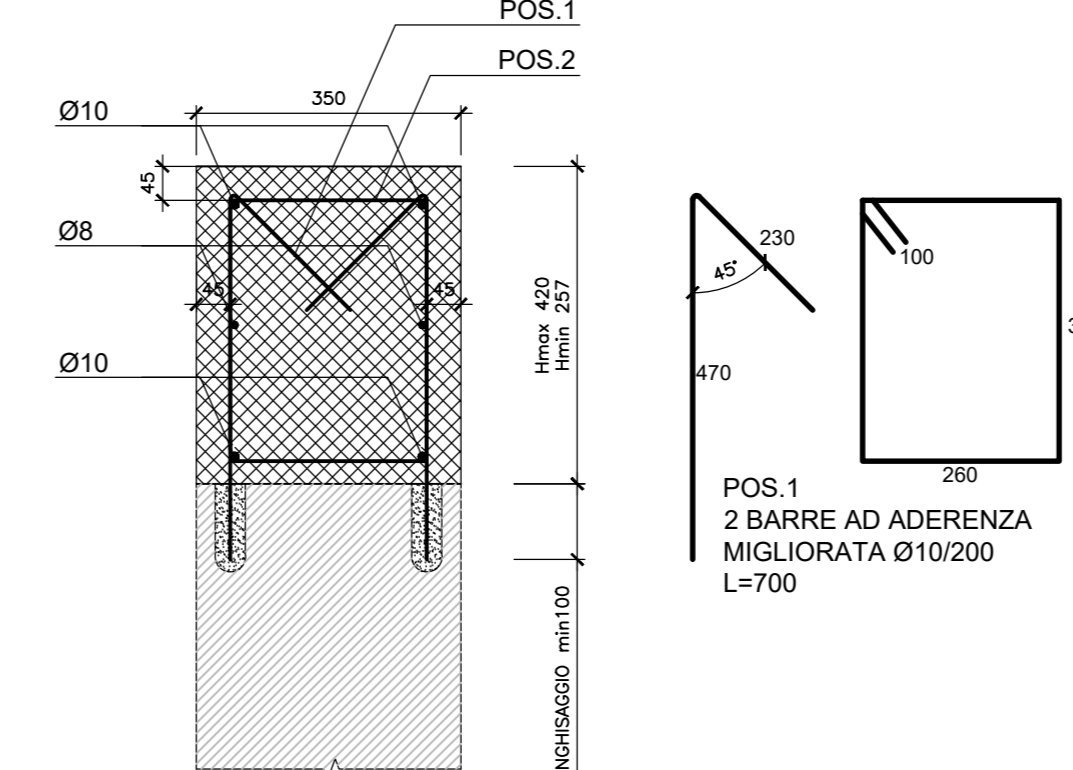
Scala 1:10



ARMATURA CORDOLO

Hmax = 420 mm

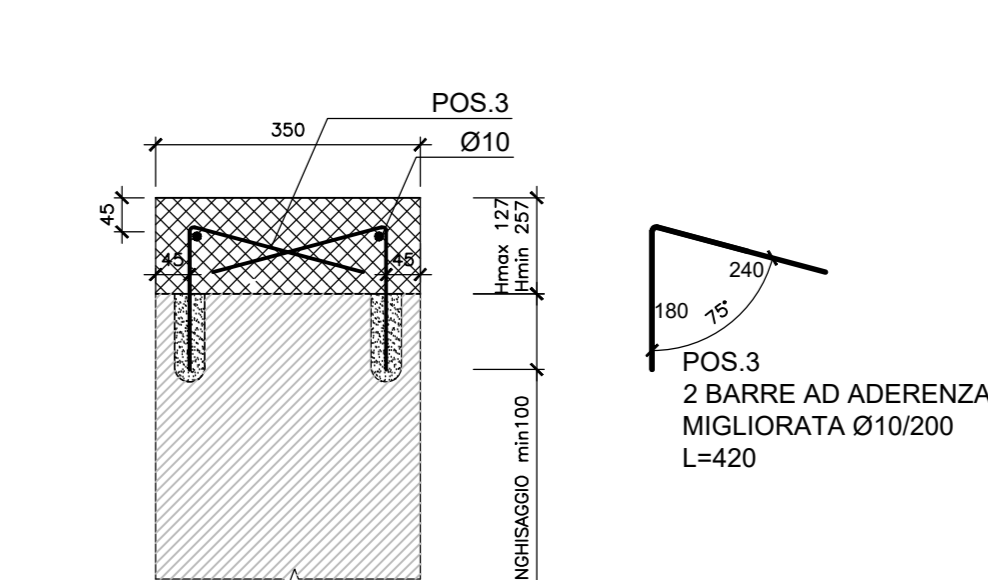
Scala 1:10



ARMATURA CORDOLO

Hmin = 127 mm

Scala 1:10



AUTORITA' PORTUALE DELLA SPIEZA
Via del Molo, 1
19126 La Spezia SP

RESPONSABILE UNICO DEL PROCEDIMENTO
ing. Franco Poma

A.T.1. IMPRESE
CAPOIMPRESA - MANICANTOVA
CIR Ambiente

MANICANTOVA
Via S. Maria, 1
50139 Firenze, FI
www.manicantova.it

A.T.1. PROGETTISTI
Dott. Ing. TOMMASO TASSI
Ing. GIULIO BIANCHI
Ing. ANTONIO BIANCHI
Ing. GIULIO BIANCHI
Ing. ANTONIO BIANCHI
www.ingegneriamanica.it

PROGETTO
RIQUALIFICAZIONE FUNZIONALE ARCHITETTONICA
DELL'INTERFACCIA PORTO CITTA' DELLA SPIEZA
INSERIMENTO AMBIENTALE E PAESAGGISTICO LUNGO
VIALE SAN BARTOLOMEO

PROGETTO ESECUTIVO

TITOLO
AMBITO 1B
Montanti primari, prove di chiusura e cordoli in c.a.

| REV. | DATA | FILE | OGGETTO | DIS. | APPR. |
|------|------|------|---------|------|-------|
| 1 | | | | | |
| 2 | | | | | |
| 3 | | | | | |
| 4 | | | | | |
| 5 | | | | | |

ELABORAZIONE
PE-1B-202

DATA
30/06/2017

PROGETTO
L. Manica

SCALE
1:20 - 1:10 - 1:5

FILE
1/06_PE-1B-202_0.dwg

VERIFICA
S. Arduo

APPROVAZIONE
L. Manica

1/06