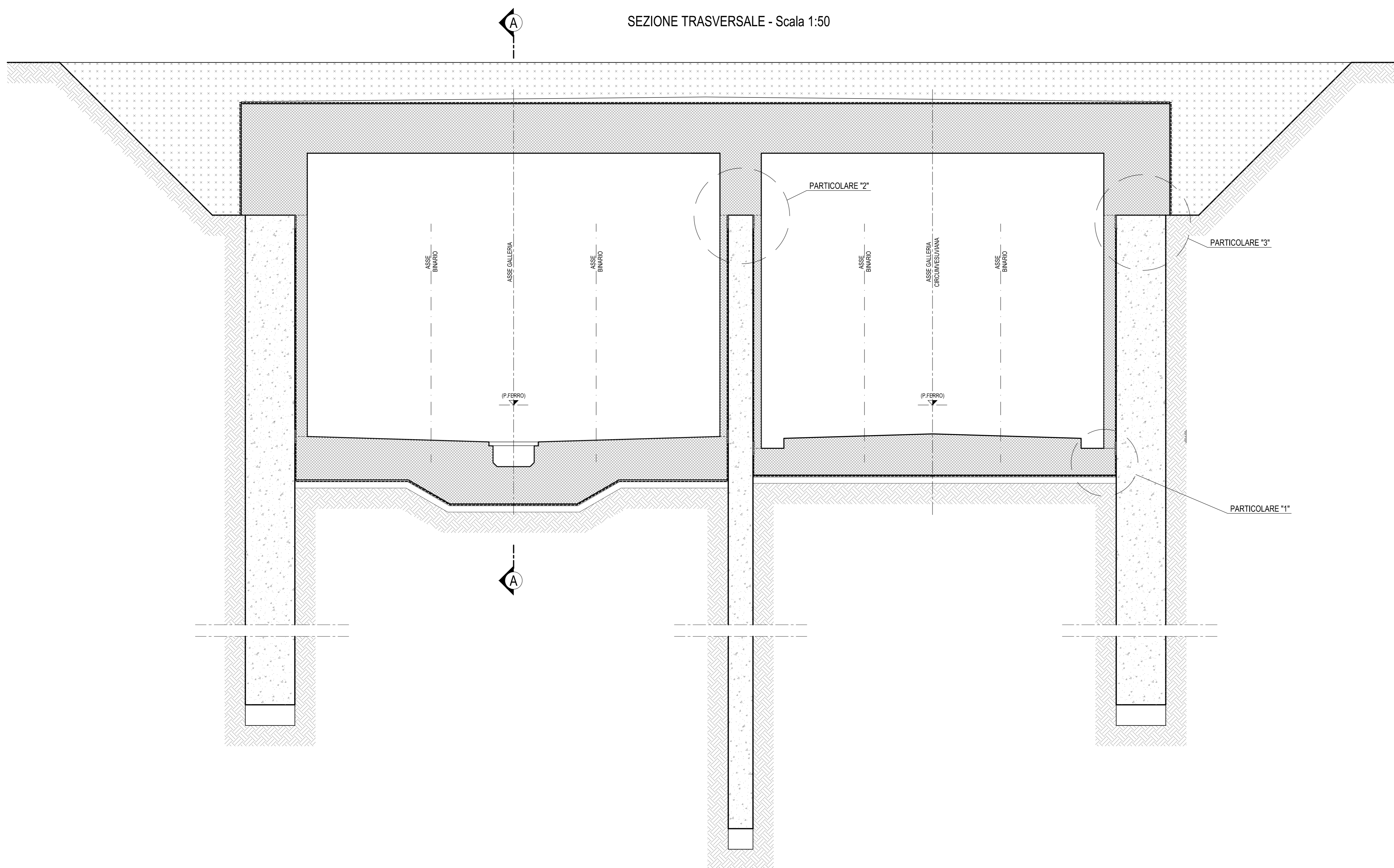
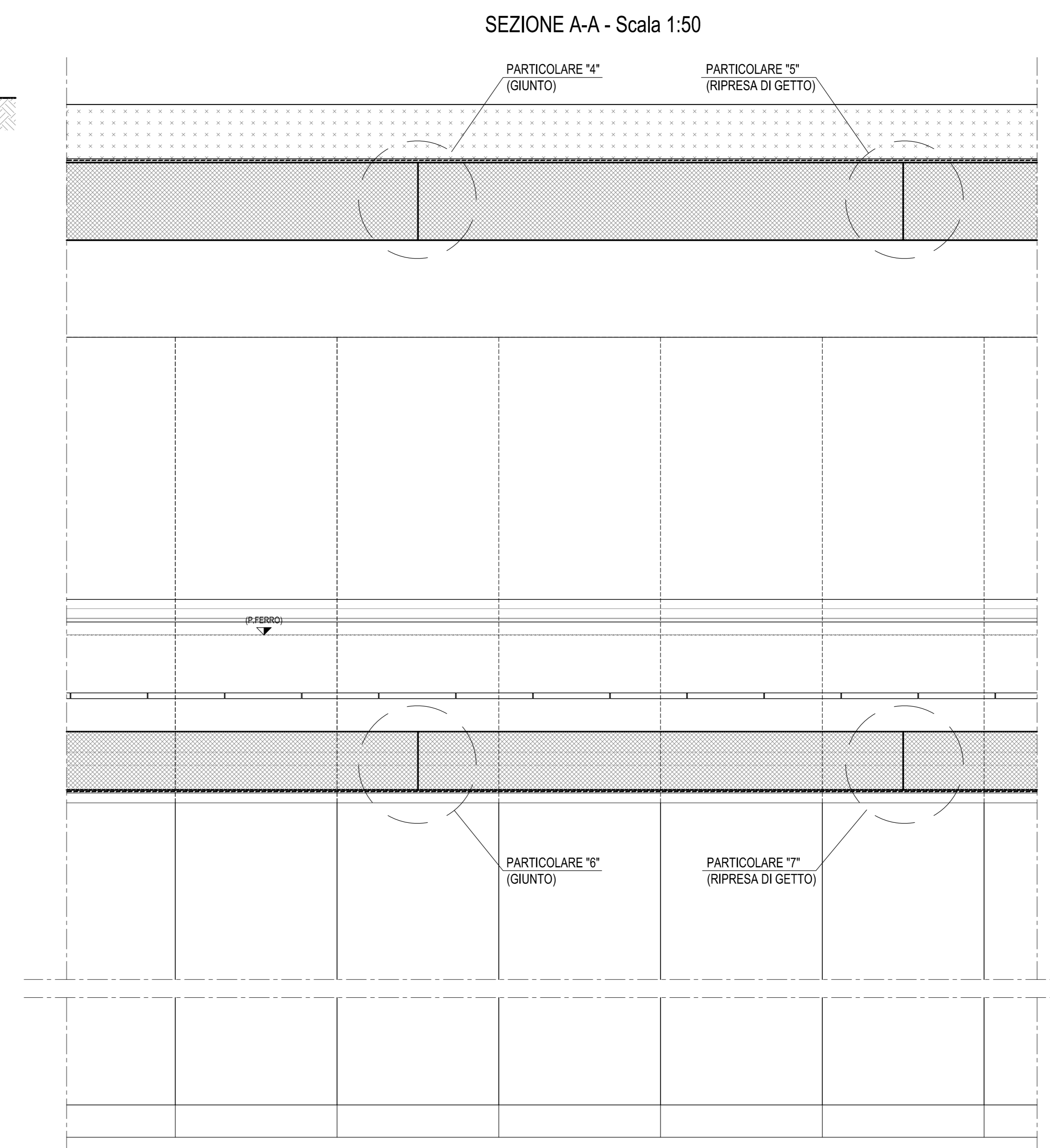


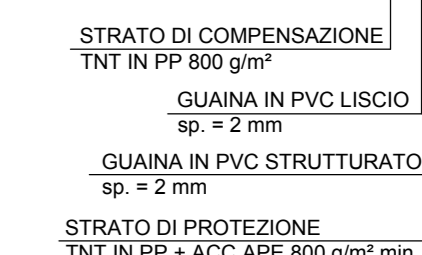
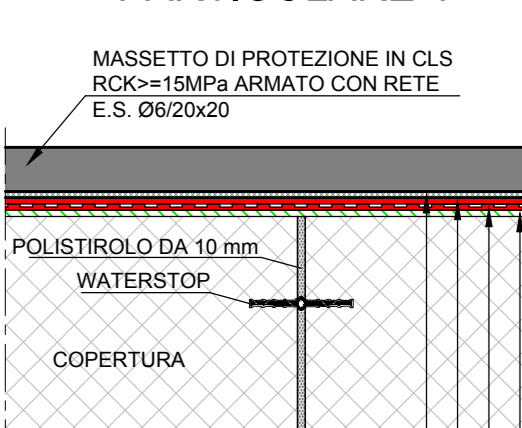
SEZIONE TRASVERSALE - Scala 1:50



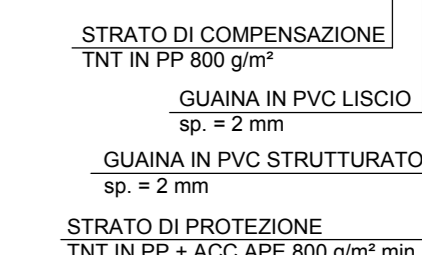
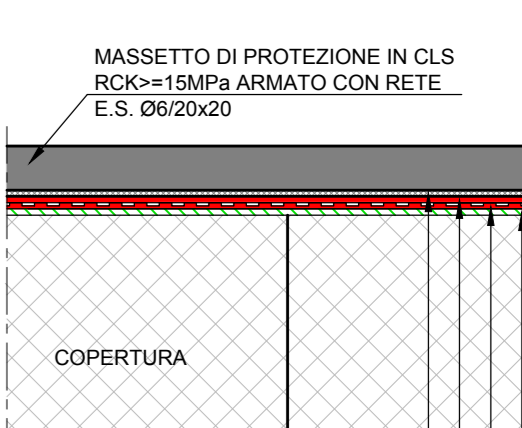
SEZIONE A-A - Scala 1:50



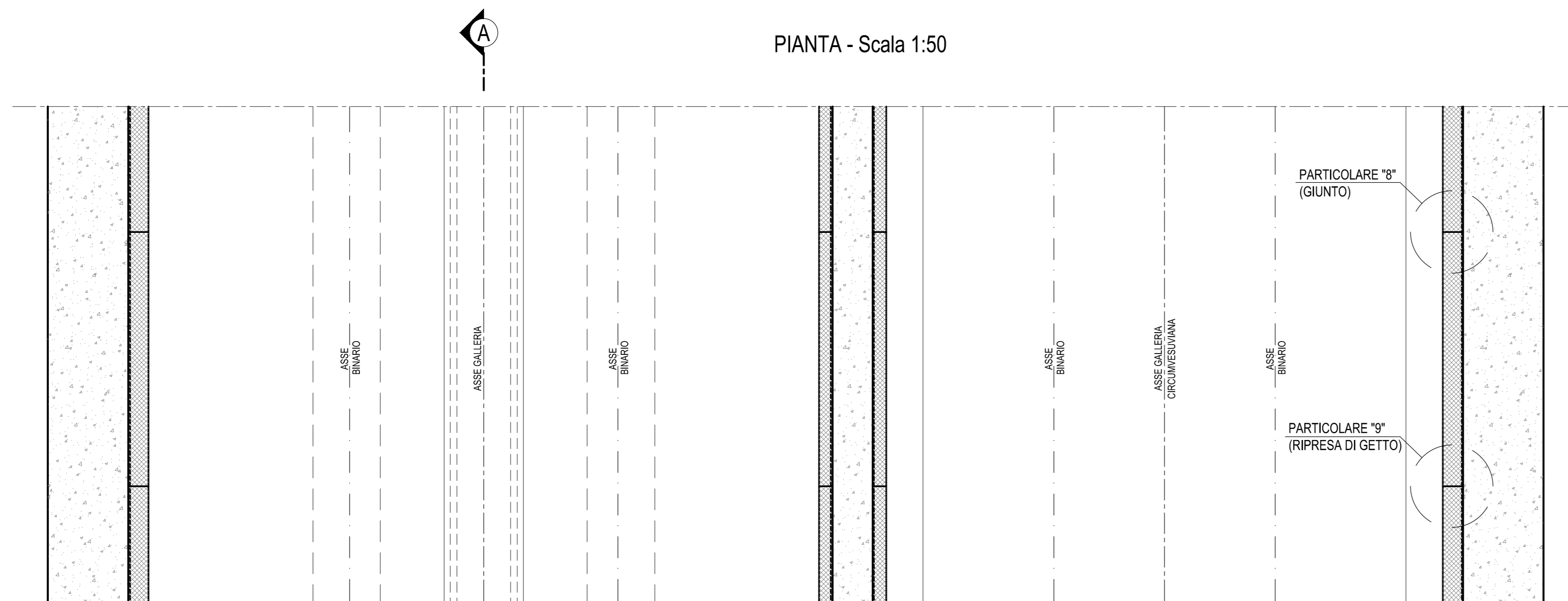
PARTICOLARE 4



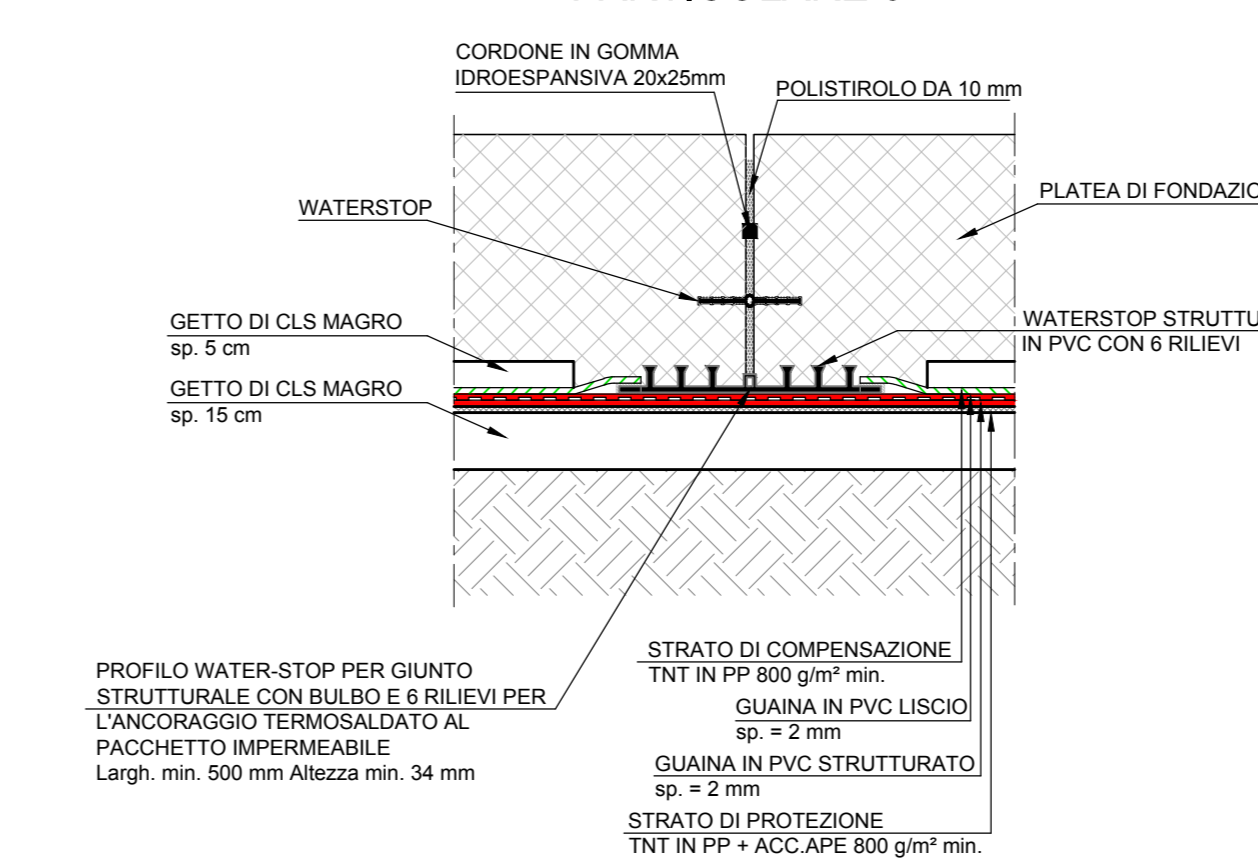
PARTICOLARE 5



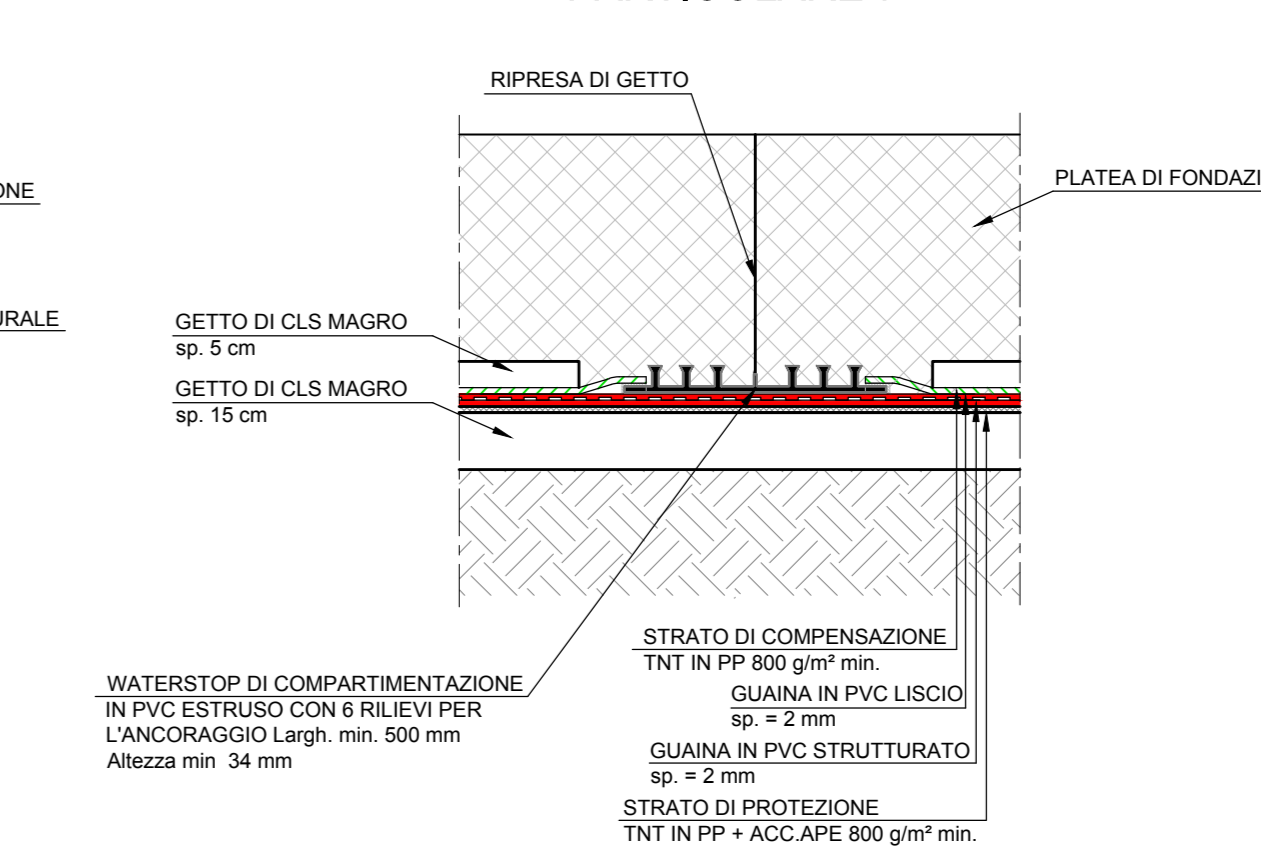
PIANTA - Scala 1:50



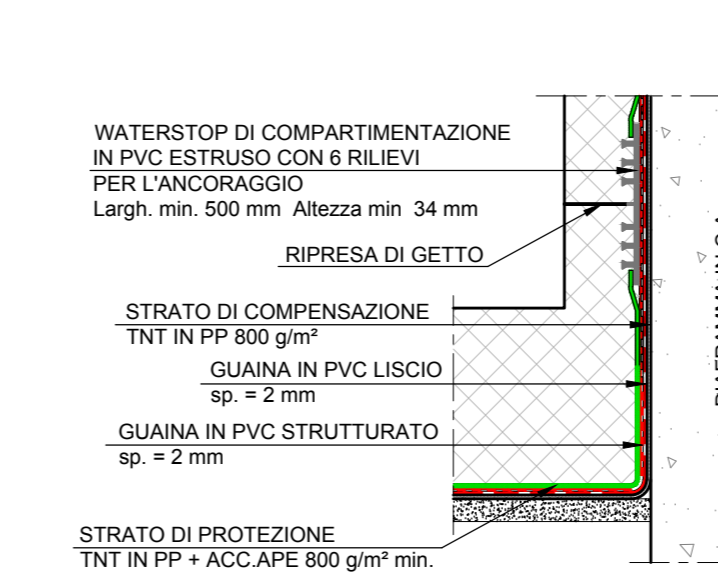
PARTICOLARE 6



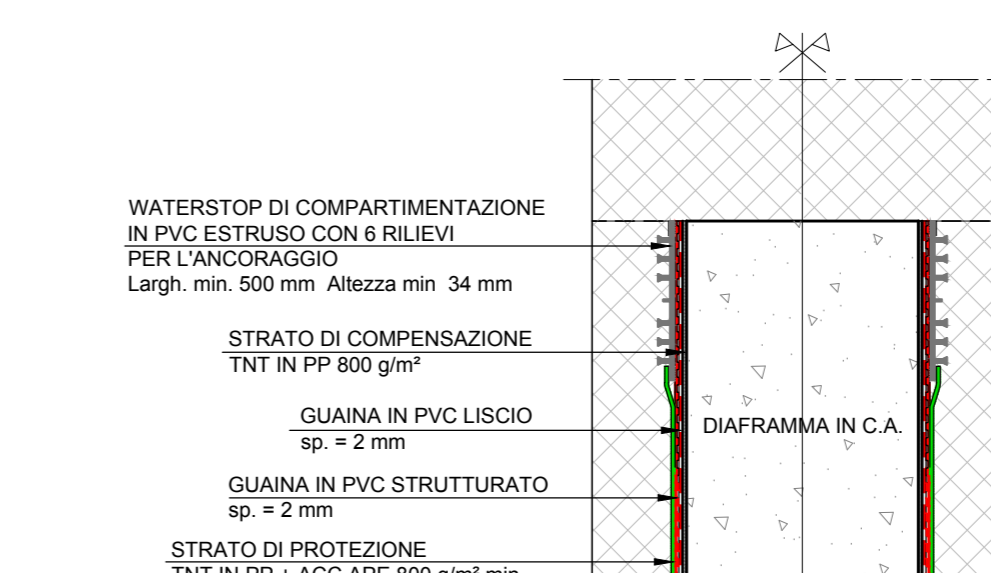
PARTICOLARE 7



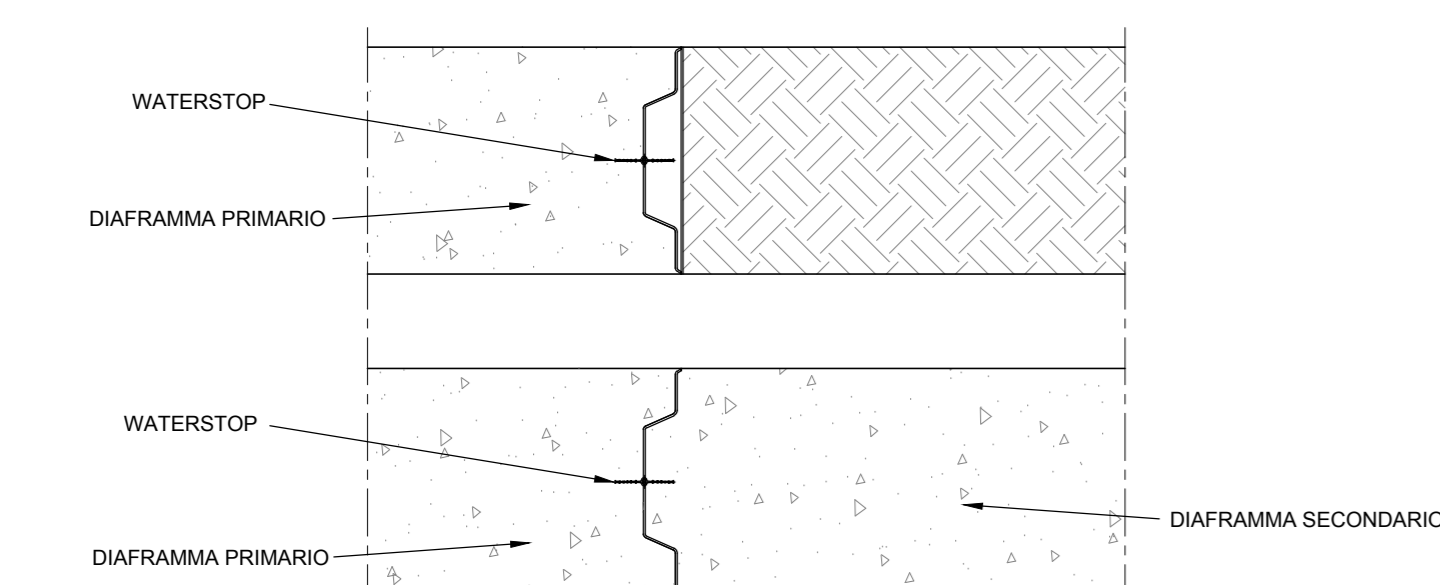
PARTICOLARE 1



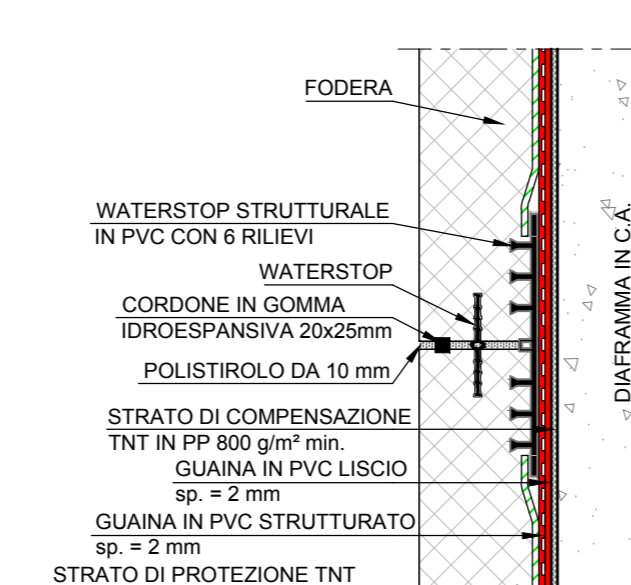
PARTICOLARE 2



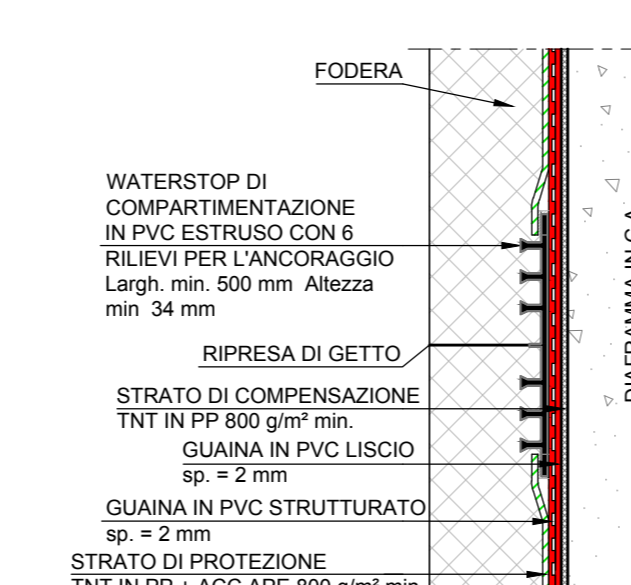
PARTICOLARE GIUNTO TRA DIAFRAMMI (DIAFRAMMI DI GALLERIA E TRASVERSALI)



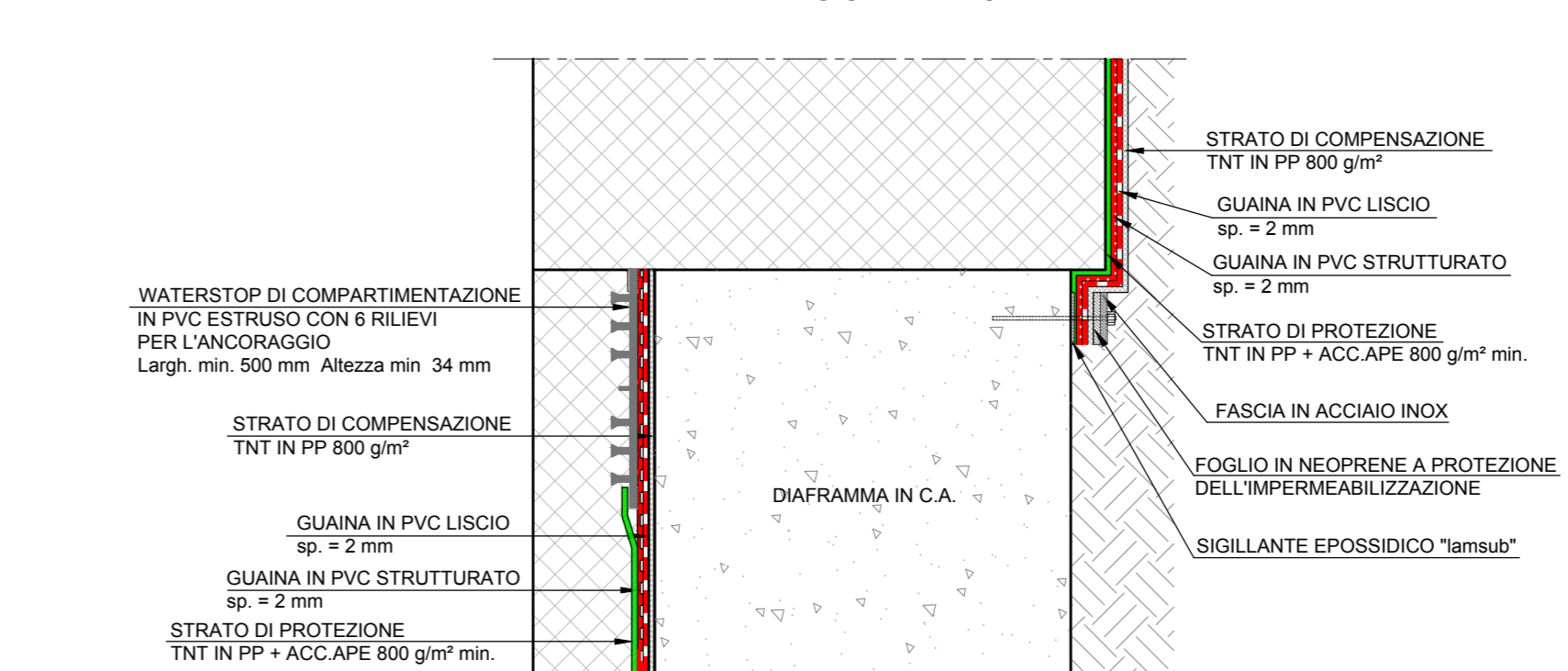
PARTICOLARE 8



PARTICOLARE 9



PARTICOLARE 3



COMMITTENTE: **RFI** RETE FERROVIARIA ITALIANA GRUPPO FERROVIE DELLO STATO ITALIANO

DIREZIONE LAVORI: **ITALFERR** GRUPPO FERROVIE DELLO STATO ITALIANO

APPALTATORE: **salini impregilo** **ASTALDI**

PROGETTAZIONE: **SYSTRA** **SOTECNI** **ROCKSOIL**

**PROGETTO ESECUTIVO**

**LINEA FERROVIARIA NAPOLI - BARI, TRATTA NAPOLI-CANCELLO, IN VARIANTE TRA LE PK 0+000 E PK 15+585, INCLUSE LE OPERE ACCESSORIE, NELL'AMBITO DEGLI INTERVENTI DI CUI AL D.L. 133/2014, CONVERTITO IN LEGGE 164 / 2014**

DISEGNO

GA - GALLERIE

GA01 - GALLERIA CASALNUOVO DA KM 0+550.000 A KM 2+860.210

PARTICOLARI DI IMPERMEABILIZZAZIONE - TAV. 1

Rev.	Descrizione	Redatto	Data	Verificato	Data	Approvato	Data	AutORIZZATO Data
A	EMMISSIONE	NARSONE	14/09/18	FRANCESCO	15/09/18	BELLOCCHIO	15/09/18	CASIANI
B	EMMISSIONE PER REV	NARSONE	10/09/18	FRANCESCO	11/09/18	BELLOCCHIO	11/09/18	

SCALA: 1:1000

File: IF1M.0.0.E.ZZ.BZ.GA.01.0.0.002-B.DWG n. Elab: