



NATURA 2000 - STANDARD DATA FORM

For Special Protection Areas (SPA),
Proposed Sites for Community Importance (pSCI),
Sites of Community Importance (SCI) and
for Special Areas of Conservation (SAC)

SITE IT20B0009
SITENAME Valli del Mincio

TABLE OF CONTENTS

- [1. SITE IDENTIFICATION](#)
- [2. SITE LOCATION](#)
- [3. ECOLOGICAL INFORMATION](#)
- [4. SITE DESCRIPTION](#)
- [5. SITE PROTECTION STATUS](#)
- [6. SITE MANAGEMENT](#)
- [7. MAP OF THE SITE](#)

1. SITE IDENTIFICATION

1.1 Type A	1.2 Site code IT20B0009	Back to top
----------------------	-----------------------------------	-----------------------------

1.3 Site name

Valli del Mincio

1.4 First Compilation date 1995-11	1.5 Update date 2017-01
--	-----------------------------------

1.6 Respondent:

Name/Organisation:	Regione Lombardia Direzione Generale Ambiente, Energia e Sviluppo Sostenibile - Struttura Valorizzazione aree protette e biodiversità
Address:	Piazza Città di Lombardia 1, 20124 Milano
Email:	ambiente@pec.regione.lombardia.it

1.7 Site indication and designation / classification dates

Date site classified as SPA:	1988-10
National legal reference of SPA designation	D.G.R. 18453/2004

2. SITE LOCATION

2.1 Site-centre location [decimal degrees]:

[Back to top](#)

Longitude
10.746191

Latitude
45.16128

2.2 Area [ha]:

1948.0

2.3 Marine area [%]

0.0

2.4 Sitelength [km]:

0.0

2.5 Administrative region code and name

NUTS level 2 code **Region Name**

ITC4	Lombardia
------	-----------

2.6 Biogeographical Region(s)

Continental (100.0
%)

3. ECOLOGICAL INFORMATION

[Back to top](#)

3.1 Habitat types present on the site and assessment for them

Annex I Habitat types						Site assessment			
Code	PF	NP	Cover [ha]	Cave [number]	Data quality	A B C D	A B C		
						Representativity	Relative Surface	Conservation	Global
3150			39.7		G	B	C	C	C
6410			113.54		G	B	C	B	B
6510			112.51		G	B	C	A	B
91E0			20.18		G	C	C	C	C

- **PF:** for the habitat types that can have a non-priority as well as a priority form (6210, 7130, 9430) enter "X" in the column PF to indicate the priority form.
- **NP:** in case that a habitat type no longer exists in the site enter: x (optional)
- **Cover:** decimal values can be entered
- **Caves:** for habitat types 8310, 8330 (caves) enter the number of caves if estimated surface is not available.
- **Data quality:** G = 'Good' (e.g. based on surveys); M = 'Moderate' (e.g. based on partial data with some extrapolation); P = 'Poor' (e.g. rough estimation)

3.2 Species referred to in Article 4 of Directive 2009/147/EC and listed in Annex II of Directive 92/43/EEC and site evaluation for them

--	--	--

Species					Population in the site						Site assessment		
G	Code	Scientific Name	S	NP	T	Size		Unit	Cat.	D.qual.	A B C D	A B C	
						Min	Max				Pop.	Con.	Iso.
B	A086	Accipiter nisus			p				P	DD	D		
B	A086	Accipiter nisus			r				P	DD	D		
B	A086	Accipiter nisus			w				P	DD	D		
B	A086	Accipiter nisus			c				C	DD	D		
B	A298	Acrocephalus arundinaceus			r				C	DD	C	B	C
B	A298	Acrocephalus arundinaceus			c				C	DD	C	B	C
B	A293	Acrocephalus melanopogon			w				P	DD	D		
B	A293	Acrocephalus melanopogon			c				P	DD	D		
B	A294	Acrocephalus paludicola			c				V	DD	D		
B	A296	Acrocephalus palustris			c				C	DD	C	B	B
B	A296	Acrocephalus palustris			r				C	DD	C	B	B
B	A295	Acrocephalus schoenobaenus			r	1	5	p		G	A	B	B
B	A295	Acrocephalus schoenobaenus			c				C	DD	A	B	B
B	A297	Acrocephalus scirpaceus			c				C	DD	C	B	C
B	A297	Acrocephalus scirpaceus			r				C	DD	C	B	C
B	A168	Actitis hypoleucos			c				C	DD	D		
B	A168	Actitis hypoleucos			w				P	DD	D		
B	A324	Aegithalos caudatus			w				C	DD	D		
B	A324	Aegithalos caudatus			c				C	DD	D		
B	A324	Aegithalos caudatus			p				P	DD	D		
B	A324	Aegithalos caudatus			r				C	DD	D		
B	A247	Alauda arvensis			w				P	DD	D		
B	A247	Alauda arvensis			r				P	DD	D		
B	A247	Alauda arvensis			c				C	DD	D		
B	A247	Alauda arvensis			p	11	50	p		G	D		
B	A229	Alcedo atthis			c				P	DD	C	B	C
B	A229	Alcedo atthis			w				P	DD	C	B	C
B	A229	Alcedo atthis			p	6	10	p		G	C	B	C

B	A229	Alcedo atthis			r				P	DD	C	B	C
B	A054	Anas acuta			w	1	5	i		G	D		
B	A054	Anas acuta			c				C	DD	D		
B	A056	Anas clypeata			c				C	DD	D		
B	A056	Anas clypeata			w	11	50	i		G	D		
B	A052	Anas crecca			w	51	100	i		G	D		
B	A052	Anas crecca			c				C	DD	D		
B	A050	Anas penelope			c				C	DD	D		
B	A050	Anas penelope			w	11	50	i		G	D		
B	A053	Anas platyrhynchos			w	1001	10000	i		G	C	B	C
B	A053	Anas platyrhynchos			r				P	DD	C	B	C
B	A053	Anas platyrhynchos			c				C	DD	C	B	C
B	A053	Anas platyrhynchos			p	51	100	p		G	C	B	C
B	A055	Anas querquedula			r				V	DD	D		
B	A055	Anas querquedula			c				C	DD	D		
B	A051	Anas strepera			w	51	100	i		G	C	B	C
B	A051	Anas strepera			r				V	DD	C	B	C
B	A051	Anas strepera			c				C	DD	C	B	C
B	A041	Anser albifrons			c				R	DD	D		
B	A043	Anser anser			w				P	DD	D		
B	A043	Anser anser			c				P	DD	D		
B	A039	Anser fabalis			w				R	DD	D		
B	A039	Anser fabalis			c				R	DD	D		
B	A257	Anthus pratensis			c				P	DD	D		
B	A257	Anthus pratensis			w				P	DD	D		
B	A259	Anthus spinoletta			c				C	DD	D		
B	A259	Anthus spinoletta			w				C	DD	D		
B	A256	Anthus trivialis			c				P	DD	D		
B	A226	Apus apus			r				P	DD	D		
B	A226	Apus apus			c				C	DD	D		
B	A228	Apus melba			c				P	DD	D		
B	A227	Apus pallidus			r				V	DD	D		
B	A227	Apus pallidus			c				P	DD	D		
B	A028	Ardea cinerea			w				C	DD	D		
B	A028	Ardea cinerea			c				P	DD	D		
B	A028	Ardea cinerea			r	20	25	p		G	D		
B	A028	Ardea cinerea			p				C	DD	D		
B	A029	Ardea purpurea			r	90	140	p		G	B	B	C
B	A029	Ardea purpurea			c				P	DD	B	B	C

B	A029	Ardea purpurea			w				V	DD	B	B	C
B	A024	Ardeola ralloides			c				P	DD	B	B	C
B	A024	Ardeola ralloides			r	30	35	p		G	B	B	C
B	A222	Asio flammeus			c				V	DD	D		
B	A222	Asio flammeus			w				V	DD	D		
B	A221	Asio otus			c				P	DD	D		
B	A221	Asio otus			w				P	DD	D		
B	A221	Asio otus			p	1	5	p		G	D		
B	A221	Asio otus			r				P	DD	D		
B	A218	Athene noctua			p				C	DD	D		
B	A218	Athene noctua			c				R	DD	D		
B	A218	Athene noctua			r				R	DD	D		
B	A218	Athene noctua			w				R	DD	D		
B	A059	Aythya ferina			c				C	DD	D		
B	A059	Aythya ferina			w	6	10	i		G	D		
B	A061	Aythya fuligula			c				C	DD	D		
B	A061	Aythya fuligula			w	11	50	i		G	D		
B	A062	Aythya marila			c				V	DD	D		
B	A060	Aythya nyroca			c				P	DD	D		
B	A060	Aythya nyroca			w				R	DD	D		
F	1137	Barbus plebejus			p				R	DD	C	C	C
B	A021	Botaurus stellaris			w	11	50	i		G	B	B	C
B	A021	Botaurus stellaris			c				P	DD	B	B	C
B	A025	Bubulcus ibis			p				C	DD	C	B	B
B	A025	Bubulcus ibis			w				C	DD	C	B	B
B	A025	Bubulcus ibis			c				P	DD	C	B	B
B	A025	Bubulcus ibis			r	51	100	p		G	C	B	B
B	A067	Bucephala clangula			w	6	10	i		G	D		
B	A067	Bucephala clangula			c				P	DD	D		
B	A087	Buteo buteo			c				C	DD	D		
B	A087	Buteo buteo			w				C	DD	D		
B	A366	Carduelis cannabina			w				P	DD	D		
B	A366	Carduelis cannabina			c				P	DD	D		
B	A364	Carduelis carduelis			c				P	DD	D		
B	A364	Carduelis carduelis			p				P	DD	D		
B	A364	Carduelis carduelis			w				P	DD	D		
B	A364	Carduelis carduelis			r				P	DD	D		
B	A363	Carduelis chloris			r				P	DD	D		
B	A363	Carduelis chloris			w				P	DD	D		
B	A363	Carduelis chloris			c				P	DD	D		

B	A363	Carduelis chloris			p				P	DD	D		
B	A365	Carduelis spinus			c				C	DD	D		
B	A365	Carduelis spinus			w				C	DD	D		
B	A288	Cettia cetti			r				P	DD	C	B	C
B	A288	Cettia cetti			p				C	DD	C	B	C
B	A288	Cettia cetti			w				P	DD	C	B	C
B	A288	Cettia cetti			c				P	DD	C	B	C
B	A136	Charadrius dubius			c				C	DD	D		
B	A136	Charadrius dubius			r				C	DD	D		
B	A196	Chlidonias hybridus			c				P	DD	D		
B	A198	Chlidonias leucopterus			c				R	DD	D		
B	A197	Chlidonias niger			c				C	DD	D		
F	1140	Chondrostoma soetta			p				R	DD	C	C	C
B	A031	Ciconia ciconia			w				P	DD	D		
B	A031	Ciconia ciconia			c				P	DD	D		
B	A031	Ciconia ciconia			p				P	DD	D		
B	A030	Ciconia nigra			c				V	DD	D		
B	A081	Circus aeruginosus			p				P	DD	B	B	C
B	A081	Circus aeruginosus			c				C	DD	B	B	C
B	A081	Circus aeruginosus			w	11	50	i		G	B	B	C
B	A081	Circus aeruginosus			r	16	25	p		G	B	B	C
B	A082	Circus cyaneus			w	6	10	i		G	C	B	C
B	A082	Circus cyaneus			c				P	DD	C	B	C
B	A084	Circus pygargus			r	1	5	p		G	D		
B	A084	Circus pygargus			c				P	DD	D		
B	A289	Cisticola juncidis			w				P	DD	D		
B	A289	Cisticola juncidis			c				C	DD	D		
B	A289	Cisticola juncidis			p				P	DD	D		
B	A289	Cisticola juncidis			r				P	DD	D		
B	A064	Clangula hyemalis			c				V	DD	D		
F	5304	Cobitis bilineata			p				P	DD	C	C	C
B	A207	Columba oenas			c				P	DD	D		
B	A207	Columba oenas			w				P	DD	D		
B	A208	Columba palumbus			r				P	DD	D		
B	A208	Columba palumbus			c				C	DD	D		
B	A208	Columba palumbus			w	251	500	i		G	D		
B	A208	Columba palumbus			p	11	50	p		G	D		
B	A350	Corvus corax			c				V	DD	D		
B	A615	Corvus cornix			r				P	DD	D		

B	A615	Corvus cornix			w				C	DD	D		
B	A615	Corvus cornix			p				C	DD	D		
B	A615	Corvus cornix			c				C	DD	D		
B	A349	Corvus corone			w				R	DD	D		
B	A349	Corvus corone			p				V	DD	D		
B	A348	Corvus frugilegus			w				P	DD	D		
B	A348	Corvus frugilegus			c				P	DD	D		
B	A347	Corvus monedula			p				P	DD	D		
B	A113	Coturnix coturnix			c				C	DD	D		
B	A113	Coturnix coturnix			r	11	50	p		G	D		
B	A212	Cuculus canorus			c				C	DD	C	B	C
B	A212	Cuculus canorus			r				C	DD	C	B	C
B	A036	Cygnus olor			w	51	100	i		G	B	B	B
B	A036	Cygnus olor			c				P	DD	B	B	B
B	A036	Cygnus olor			p	51	100	i		G	B	B	B
B	A036	Cygnus olor			r				P	DD	B	B	B
B	A253	Delichon urbica			r				C	DD	D		
B	A253	Delichon urbica			c				C	DD	D		
B	A237	Dendrocopos major			p				C	DD	D		
B	A237	Dendrocopos major			c				P	DD	D		
B	A237	Dendrocopos major			w				P	DD	D		
B	A237	Dendrocopos major			r				P	DD	D		
B	A236	Dryocopus martius			c				V	DD	D		
B	A027	Egretta alba			p				P	DD	C	B	C
B	A027	Egretta alba			c				P	DD	C	B	C
B	A027	Egretta alba			w	90	110	i		G	C	B	C
B	A026	Egretta garzetta			c				P	DD	D		
B	A026	Egretta garzetta			r	50	70	p		G	D		
B	A026	Egretta garzetta			w	11	50	i		G	D		
B	A542	Emberiza rustica			c				V	DD	D		
B	A381	Emberiza schoeniclus			c				C	DD	C	B	B
B	A381	Emberiza schoeniclus			w				C	DD	C	B	B
B	A381	Emberiza schoeniclus			r				P	DD	C	B	B
B	A381	Emberiza schoeniclus			p				C	DD	C	B	B
R	1220	Emys orbicularis			p				P	DD	D		
B	A269	Erithacus rubecula			c				C	DD	D		
B	A269	Erithacus rubecula			w				C	DD	D		
B	A098	Falco columbarius			c				P	DD	A	B	C
B	A098	Falco columbarius			w	25	30	i		G	A	B	C

B	A103	Falco peregrinus			p	1	5	i		G	D		
B	A103	Falco peregrinus			w					P	DD	D	
B	A103	Falco peregrinus			c					P	DD	D	
B	A099	Falco subbuteo			c					P	DD	D	
B	A099	Falco subbuteo			r	1	3	p		G	D		
B	A096	Falco tinnunculus			c					C	DD	D	
B	A096	Falco tinnunculus			r					P	DD	D	
B	A096	Falco tinnunculus			p					P	DD	D	
B	A096	Falco tinnunculus			w					C	DD	D	
B	A097	Falco vespertinus			c					P	DD	D	
B	A321	Ficedula albicollis			c					P	DD	D	
B	A322	Ficedula hypoleuca			c					P	DD	D	
B	A322	Ficedula hypoleuca			w					V	DD	D	
B	A359	Fringilla coebs			p					C	DD	D	
B	A359	Fringilla coebs			c					C	DD	D	
B	A359	Fringilla coebs			r					C	DD	D	
B	A359	Fringilla coebs			w					C	DD	D	
B	A360	Fringilla montifringilla			c					P	DD	D	
B	A360	Fringilla montifringilla			w					R	DD	D	
B	A125	Fulica atra			c					C	DD	D	
B	A125	Fulica atra			w	501	1000	i		G	D		
B	A125	Fulica atra			p	51	100	p		G	D		
B	A125	Fulica atra			r					P	DD	D	
B	A244	Galerida cristata			c					P	DD	D	
B	A153	Gallinago gallinago			w	11	50	i		G	D		
B	A153	Gallinago gallinago			c					C	DD	D	
B	A123	Gallinula chloropus			p	51	100	p		G	D		
B	A123	Gallinula chloropus			r					P	DD	D	
B	A123	Gallinula chloropus			w	101	250	i		G	D		
B	A123	Gallinula chloropus			c					C	DD	D	
B	A342	Garrulus glandarius			w					P	DD	D	
B	A342	Garrulus glandarius			p	1	5	p		G	D		
B	A342	Garrulus glandarius			r					P	DD	D	
B	A342	Garrulus glandarius			c					P	DD	D	
B	A002	Gavia arctica			w	1	5	i		G	D		
B	A002	Gavia arctica			c					R	DD	D	
B	A001	Gavia stellata			c					V	DD	D	
B	A001	Gavia stellata			w	1	5	i		G	D		
B	A135	Glareola pratincola			c					V	DD	D	
B	A127	Grus grus			c					P	DD	D	

B	A075	Haliaeetus albicilla			w				V	DD	B	B	B
B	A092	Hieraetus pennatus			c				V	DD	D		
B	A092	Hieraetus pennatus			w				V	DD	D		
B	A131	Himantopus himantopus			c				P	DD	D		
B	A299	Hippolais icterina			c				V	DD	D		
B	A300	Hippolais polyglotta			c				R	DD	D		
B	A252	Hirundo daurica			c				V	DD	D		
B	A251	Hirundo rustica			r				C	DD	D		
B	A251	Hirundo rustica			c				C	DD	D		
B	A022	Ixobrychus minutus			r	11	50	p		G	C	B	C
B	A022	Ixobrychus minutus			c				P	DD	C	B	C
B	A233	Jynx torquilla			r				C	DD	D		
B	A233	Jynx torquilla			c				C	DD	D		
B	A338	Lanius collurio			c				P	DD	D		
B	A338	Lanius collurio			r	1	5	p		G	D		
B	A340	Lanius excubitor			w	2	3	i		G	C	B	C
B	A340	Lanius excubitor			c				R	DD	C	B	C
B	A184	Larus argentatus			w				P	DD	D		
B	A184	Larus argentatus			c				P	DD	D		
B	A182	Larus canus			w	101	250	i		G	D		
B	A182	Larus canus			c				P	DD	D		
B	A183	Larus fuscus			w				V	DD	D		
B	A176	Larus melanocephalus			c				V	DD	D		
B	A604	Larus michahellis			w	51	100	i		G	D		
B	A604	Larus michahellis			c				P	DD	D		
B	A177	Larus minutus			c				P	DD	D		
B	A177	Larus minutus			w				V	DD	D		
B	A179	Larus ridibundus			w	10000	10000	i		G	B	B	C
B	A179	Larus ridibundus			c				C	DD	B	B	C
B	A179	Larus ridibundus			p				P	DD	B	B	C
B	A157	Limosa lapponica			c				P	DD	D		
B	A156	Limosa limosa			c				R	DD	D		
B	A292	Locustella luscinioides			c				C	DD	B	B	B
B	A292	Locustella luscinioides			r	11	50	p		G	B	B	B
B	A290	Locustella naevia			c				V	DD	D		
B	A271	Luscinia megarhynchos			c				C	DD	D		

B	A271	Luscinia megarhynchos			r				C	DD	D		
B	A272	Luscinia svecica			c				P	DD	D		
I	1060	Lycaena dispar			p				P	DD	D		
B	A152	Lymnocyptes minimus			w				V	DD	D		
B	A152	Lymnocyptes minimus			c				V	DD	D		
B	A066	Melanitta fusca			w				V	DD	D		
B	A066	Melanitta fusca			c				V	DD	D		
B	A068	Mergus albellus			w				P	DD	D		
B	A068	Mergus albellus			c				P	DD	D		
B	A070	Mergus merganser			c				R	DD	D		
B	A070	Mergus merganser			w				R	DD	D		
B	A069	Mergus serrator			w				R	DD	D		
B	A069	Mergus serrator			c				R	DD	D		
B	A230	Merops apiaster			c				C	DD	D		
B	A383	Miliaria calandra			c				P	DD	D		
B	A383	Miliaria calandra			r				V	DD	D		
B	A073	Milvus migrans			c				C	DD	D		
B	A073	Milvus migrans			r	1	5	p		G	D		
B	A074	Milvus milvus			c				R	DD	D		
B	A262	Motacilla alba			p				P	DD	D		
B	A262	Motacilla alba			w				P	DD	D		
B	A262	Motacilla alba			c				C	DD	D		
B	A262	Motacilla alba			r				P	DD	D		
B	A261	Motacilla cinerea			c				P	DD	D		
B	A261	Motacilla cinerea			w				P	DD	D		
B	A260	Motacilla flava			c				C	DD	C	B	C
B	A260	Motacilla flava			r				C	DD	C	B	C
B	A319	Muscicapa striata			c				P	DD	D		
B	A319	Muscicapa striata			r				P	DD	D		
B	A058	Netta rufina			r				V	DD	D		
B	A058	Netta rufina			c				V	DD	D		
B	A160	Numenius arquata			w	1	5	i		G	D		
B	A160	Numenius arquata			c				P	DD	D		
B	A023	Nycticorax nycticorax			c				P	DD	D		
B	A023	Nycticorax nycticorax			r	90	100	p		G	D		
B	A277	Oenanthe oenanthe			c				P	DD	D		
B	A337	Oriolus oriolus			r				C	DD	D		
B	A337	Oriolus oriolus			c				C	DD	D		

B	A132	avosetta			c				V	DD	D		
B	A318	Regulus ignicapillus			c				P	DD	D		
B	A318	Regulus ignicapillus			w				R	DD	D		
B	A317	Regulus regulus			w				C	DD	D		
B	A317	Regulus regulus			c				C	DD	D		
B	A336	Remiz pendulinus			r				P	DD	C	B	C
B	A336	Remiz pendulinus			c				P	DD	C	B	C
B	A336	Remiz pendulinus			p				P	DD	C	B	C
B	A336	Remiz pendulinus			w				P	DD	C	B	C
B	A249	Riparia riparia			c				C	DD	D		
F	1114	Rutilus pigus			p				V	DD	C	C	C
B	A275	Saxicola rubetra			c				P	DD	D		
B	A276	Saxicola torquata			c				P	DD	D		
B	A276	Saxicola torquata			p				P	DD	D		
B	A276	Saxicola torquata			r				P	DD	D		
B	A276	Saxicola torquata			w				P	DD	D		
B	A155	Scolopax rusticola			c				P	DD	D		
B	A155	Scolopax rusticola			w				P	DD	D		
B	A361	Serinus serinus			c				P	DD	D		
B	A361	Serinus serinus			w				P	DD	D		
B	A361	Serinus serinus			r				P	DD	D		
B	A361	Serinus serinus			p				P	DD	D		
B	A173	Stercorarius parasiticus			w				V	DD	D		
B	A195	Sterna albifrons			c				C	DD	D		
B	A190	Sterna caspia			c				V	DD	D		
B	A193	Sterna hirundo			c				C	DD	D		
B	A209	Streptopelia decaocto			c				P	DD	D		
B	A209	Streptopelia decaocto			p				C	DD	D		
B	A209	Streptopelia decaocto			r				P	DD	D		
B	A209	Streptopelia decaocto			w				P	DD	D		
B	A210	Streptopelia turtur			r	11	50	p		G	D		
B	A210	Streptopelia turtur			c				C	DD	D		
B	A219	Strix aluco			p				V	DD	D		
B	A219	Strix aluco			r				P	DD	D		
B	A219	Strix aluco			w				P	DD	D		
B	A219	Strix aluco			c				P	DD	D		
B	A351	Sturnus vulgaris			w				C	DD	B	B	C

B	A351	Sturnus vulgaris			r				C	DD	B	B	C
B	A351	Sturnus vulgaris			c				C	DD	B	B	C
B	A351	Sturnus vulgaris			p				C	DD	B	B	C
B	A311	Sylvia atricapilla			r				C	DD	D		
B	A311	Sylvia atricapilla			c				C	DD	D		
B	A311	Sylvia atricapilla			p				P	DD	D		
B	A310	Sylvia borin			c				P	DD	D		
B	A304	Sylvia cantillans			c				V	DD	D		
B	A309	Sylvia communis			c				R	DD	D		
B	A308	Sylvia curruca			c				R	DD	D		
B	A004	Tachybaptus ruficollis			c				C	DD	C	B	C
B	A004	Tachybaptus ruficollis			w	11	50	i		G	C	B	C
B	A004	Tachybaptus ruficollis			p				P	DD	C	B	C
B	A004	Tachybaptus ruficollis			r				P	DD	C	B	C
B	A397	Tadorna ferruginea			c				V	DD	D		
B	A048	Tadorna tadorna			c				V	DD	D		
F	5331	Telestes muticellus			p				V	DD	C	C	C
B	A161	Tringa erythropus			c				P	DD	D		
B	A166	Tringa glareola			c				P	DD	D		
B	A164	Tringa nebularia			c				R	DD	D		
B	A165	Tringa ochropus			c				P	DD	D		
B	A165	Tringa ochropus			w				V	DD	D		
B	A162	Tringa totanus			c				P	DD	D		
A	1167	Triturus carnifex			p				P	DD	D		
B	A265	Troglodytes troglodytes			w				C	DD	D		
B	A265	Troglodytes troglodytes			c				C	DD	D		
B	A286	Turdus iliacus			c				P	DD	D		
B	A286	Turdus iliacus			w				R	DD	D		
B	A283	Turdus merula			p				C	DD	D		
B	A283	Turdus merula			w				C	DD	D		
B	A283	Turdus merula			r				C	DD	D		
B	A283	Turdus merula			c				C	DD	D		
B	A285	Turdus philomelos			c				P	DD	D		
B	A285	Turdus philomelos			w				P	DD	D		
B	A284	Turdus pilaris			c				P	DD	D		
B	A284	Turdus pilaris			w				P	DD	D		
B	A287	Turdus viscivorus			c				P	DD	D		
B	A213	Tyto alba			c				R	DD	D		

B	A213	Tyto alba			r				R	DD	D		
B	A213	Tyto alba			w				R	DD	D		
B	A213	Tyto alba			p				P	DD	D		
B	A232	Upupa epops			c				P	DD	D		
B	A142	Vanellus vanellus			w	1001	10000	i		G	B	B	C
B	A142	Vanellus vanellus			c				C	DD	B	B	C
B	A142	Vanellus vanellus			r				P	DD	B	B	C
B	A142	Vanellus vanellus			p	6	10	p		G	B	B	C

- **Group:** A = Amphibians, B = Birds, F = Fish, I = Invertebrates, M = Mammals, P = Plants, R = Reptiles
- **S:** in case that the data on species are sensitive and therefore have to be blocked for any public access enter: yes
- **NP:** in case that a species is no longer present in the site enter: x (optional)
- **Type:** p = permanent, r = reproducing, c = concentration, w = wintering (for plant and non-migratory species use permanent)
- **Unit:** i = individuals, p = pairs or other units according to the Standard list of population units and codes in accordance with Article 12 and 17 reporting (see [reference portal](#))
- **Abundance categories (Cat.):** C = common, R = rare, V = very rare, P = present - to fill if data are deficient (DD) or in addition to population size information
- **Data quality:** G = 'Good' (e.g. based on surveys); M = 'Moderate' (e.g. based on partial data with some extrapolation); P = 'Poor' (e.g. rough estimation); VP = 'Very poor' (use this category only, if not even a rough estimation of the population size can be made, in this case the fields for population size can remain empty, but the field "Abundance categories" has to be filled in)

3.3 Other important species of flora and fauna (optional)

Species		Population in the site						Motivation							
Group	CODE	Scientific Name	S	NP	Size		Unit	Cat.	Species Annex		Other categories				
					Min	Max		C R V P	IV	V	A	B	C	D	
I		Anergates atratulus						P							X
R		Anguis fragilis						P					X		
A		Bufo bufo						P					X		
A	1201	Bufo viridis						P	X						
R	1284	Coluber viridiflavus						p	X						
R	1283	Coronella austriaca						P	X						
M		Crocodylus suaveolens						P					X		
P		Dactylorhiza incarnata						V							X
R	1281	Elaphe longissima						P	X						
P		Epipactis palustris						R					X		
M	1327	Eptesicus serotinus						P	X						

P		palustris palustris						P											X
M	2016	Pipistrellus kuhli						P	X										
M	1317	Pipistrellus nathusii						P	X										
M	1309	Pipistrellus pipistrellus						P	X										
R	1256	Podarcis muralis						P	X										
P		Selinum carvifolia						P											X
P	1900	Spiranthes aestivalis						P	X										
P		Stachys palustris						R										X	
P		Stratiotes aloides						V											X
M		Suncus efruscus						P										X	
M	1333	Tadarida teniotis						P	X										
P		Thelypteris palustris						P											X
P		Trapa natans						R										X	
A		Triturus vulgaris						P										X	
P		Typha angustifolia						R											X
P		Typha latifolia						R											X
I	1033	Unio elongatulus						P		X									
P		Vallisneria spiralis						R											X
R		Vipera aspis						P										X	

- **Group:** A = Amphibians, B = Birds, F = Fish, Fu = Fungi, I = Invertebrates, L = Lichens, M = Mammals, P = Plants, R = Reptiles
- **CODE:** for Birds, Annex IV and V species the code as provided in the reference portal should be used in addition to the scientific name
- **S:** in case that the data on species are sensitive and therefore have to be blocked for any public access enter: yes
- **NP:** in case that a species is no longer present in the site enter: x (optional)
- **Unit:** i = individuals, p = pairs or other units according to the standard list of population units and codes in accordance with Article 12 and 17 reporting, (see [reference portal](#))
- **Cat.:** Abundance categories: C = common, R = rare, V = very rare, P = present
- **Motivation categories:** **IV, V:** Annex Species (Habitats Directive), **A:** National Red List data; **B:** Endemics; **C:** International Conventions; **D:** other reasons

4. SITE DESCRIPTION

4.1 General site character

[Back to top](#)

Habitat class	% Cover
N15	21.0
N16	1.0
N06	33.0
N20	2.0
N08	1.0
N23	2.0
N07	14.0
N10	26.0
Total Habitat Cover	100

Other Site Characteristics

Non si evidenziano altre caratteristiche nel sito.

4.2 Quality and importance

Zona umida di importanza internazionale (ai sensi della Convenzione di Ramsar), caratterizzata da ottima qualità degli habitat e da un elevato grado di biodiversità, sia a livello floristico che faunistico e di habitat. Molto ricche e ben differenziate tutte le categorie sistematiche di vertebrati, in particolare l'avifauna e l'ittiofauna; si segnala la presenza di un elevato numero di specie di interesse comunitario. Anche la flora comprende un elevato numero di specie, in particolare specie caratteristiche di aree palustri e boschi igrofili, nonché specie idrofittiche, sia di acque ferme che con leggeri flussi di corrente.

4.3 Threats, pressures and activities with impacts on the site

The most important impacts and activities with high effect on the site

Negative Impacts			
Rank	Threats and pressures [code]	Pollution (optional) [code]	inside/outside [i o b]
L	E01.03		i
H	J02.06		i
M	J02		i
M	I01		i
M	E01.01		o
M	D03.02		i
H	K01.02		i
M	J02.04.02		i
H	K02.02		i
M	J02.07		i
M	E02.01		i
L	J02.01.03		i
L	A01		i
L	H02		i
M	J01.01		i
M	F02.03		i
L	G01.02		i
H	K02.03		i
M	J02.01.02		i
M	F03.02.03		i
H	K02		i
M	E02		b

Positive Impacts			
Rank	Activities, management [code]	Pollution (optional) [code]	inside/outside [i o b]
M	J02.02.01		i
H	J02.02		i

M	F02.03.02		i
M	H01		b

Rank: H = high, M = medium, L = low

Pollution: N = Nitrogen input, P = Phosphor/Phosphate input, A = Acid input/acidification,

T = toxic inorganic chemicals, O = toxic organic chemicals, X = Mixed pollutions

i = inside, o = outside, b = both

4.4 Ownership (optional)

Type	[%]	
Public	National/Federal	42
	State/Province	0
	Local/Municipal	1
	Any Public	4
Joint or Co-Ownership	0	
Private	53	
Unknown	0	
sum	100	

4.5 Documentation

Bernini F., Bonini L., Ferri V., Gentili A., Razzetti E., Scali S. (2004). Atlante degli Anfibi e dei Rettili della Lombardia. Monografie di Pianura n. 5. Provincia di Cremona. Brichetti P. & Fasola M. (eds), 1990. Atlante degli uccelli nidificanti in Lombardia. Editoriale Ramperto. Fornasari L. & Villa M. (eds), 2001. La fauna dei Parchi lombardi. CD-Rom. Regione Lombardia. Fornasari L., Bottoni L., Massa R., Fasola M., Brichetti P. & Vigorita V. (eds), 1992. Atlante degli uccelli svernanti in Lombardia. Regione Lombardia - Università degli Studi di Milano. Ghidoni M. "Progetto Life-Natura 1996 "conservazione attiva della riserva naturale Valli del Mincio"- Rapporto Finale Attività", Mantova, 2000. Marini G. "Progetto comprensoriale interaziendale relativo alla cura dei terreni agricoli abbandonati o a rischio di abbandono (canneti e cariceti della "Riserva Naturale Valli del Mincio") nell'ambito della misura E-REG.CEE 2078/92- annata agraria 1998/1999", Mantova, 1999. Parco Naturale del Mincio "Piano della Riserva", Mantova, 1992. Persico G. "Carta della Vegetazione: carta del valore floristico e dello stato di naturalità", Mantova, 1990". Persico G. "La vegetazione del territorio mantovano", Edizioni Scuola di Cultura Contemporanea, Mantova, 1998. Politecnico di Milano e Assesoreto Ambiente-Ecologia dell'amministrazione provinciale di Mantova "Studio interdisciplinare finalizzato alla pianificazione della riserva naturale Valli del Mincio", Mantova, 1984. Prigioni C., Cantini M., Zilio A. (2001). Atlante dei mammiferi della Lombardia. Regione Lombardia. Provincia di Mantova "Rapporto sullo stato dell'ambiente nel territorio Mantovano", Mantova, 2001. Tommaselli M. et al. "La vegetazione della riserva naturale delle Valli del Mincio", Collana Annali Facoltà di Scienze Matematiche Fisiche e Naturali Università di Parma, Parma, 2002. Tosi G., Martinoli A., Preatoni D., Cerabolini B. & Vigorita V. (eds), 2003. Foreste e biodiversità faunistica in Lombardia - Monitoraggio e conservazione della fauna forestale (Galliformi e Mammiferi). Regione Lombardia - D.G. Agricoltura.

5. SITE PROTECTION STATUS (optional)

5.1 Designation types at national and regional level:

[Back to top](#)

Code	Cover [%]	Code	Cover [%]	Code	Cover [%]
IT05	74.0				

6. SITE MANAGEMENT

6.1 Body(ies) responsible for the site management:

[Back to top](#)

Organisation:	Ente Gestore del Parco Regionale del Mincio
Address:	Piazza Porta Giulia 10 – 46100 Mantova

Email:

6.2 Management Plan(s):

An actual management plan does exist:

<input checked="" type="checkbox"/>	Yes	Name: PIANO DI GESTIONE DEL SIC IT20B0017 "ANSA E VALLI DEL MINCIO" E DELLA ZPS IT20B0009 "VALLI DEL MINCIO" Link: http://www.natura2000.servizirl.it/
<input type="checkbox"/>	No, but in preparation	
<input type="checkbox"/>	No	

6.3 Conservation measures (optional)

Misure di conservazione per la tutela delle ZPS lombarde (DGR 9275 del 23/04/2009)

7. MAP OF THE SITES

[Back to top](#)

INSPIRE ID:

Map delivered as PDF in electronic format (optional)

Yes No

Reference(s) to the original map used for the digitalisation of the electronic boundaries (optional).

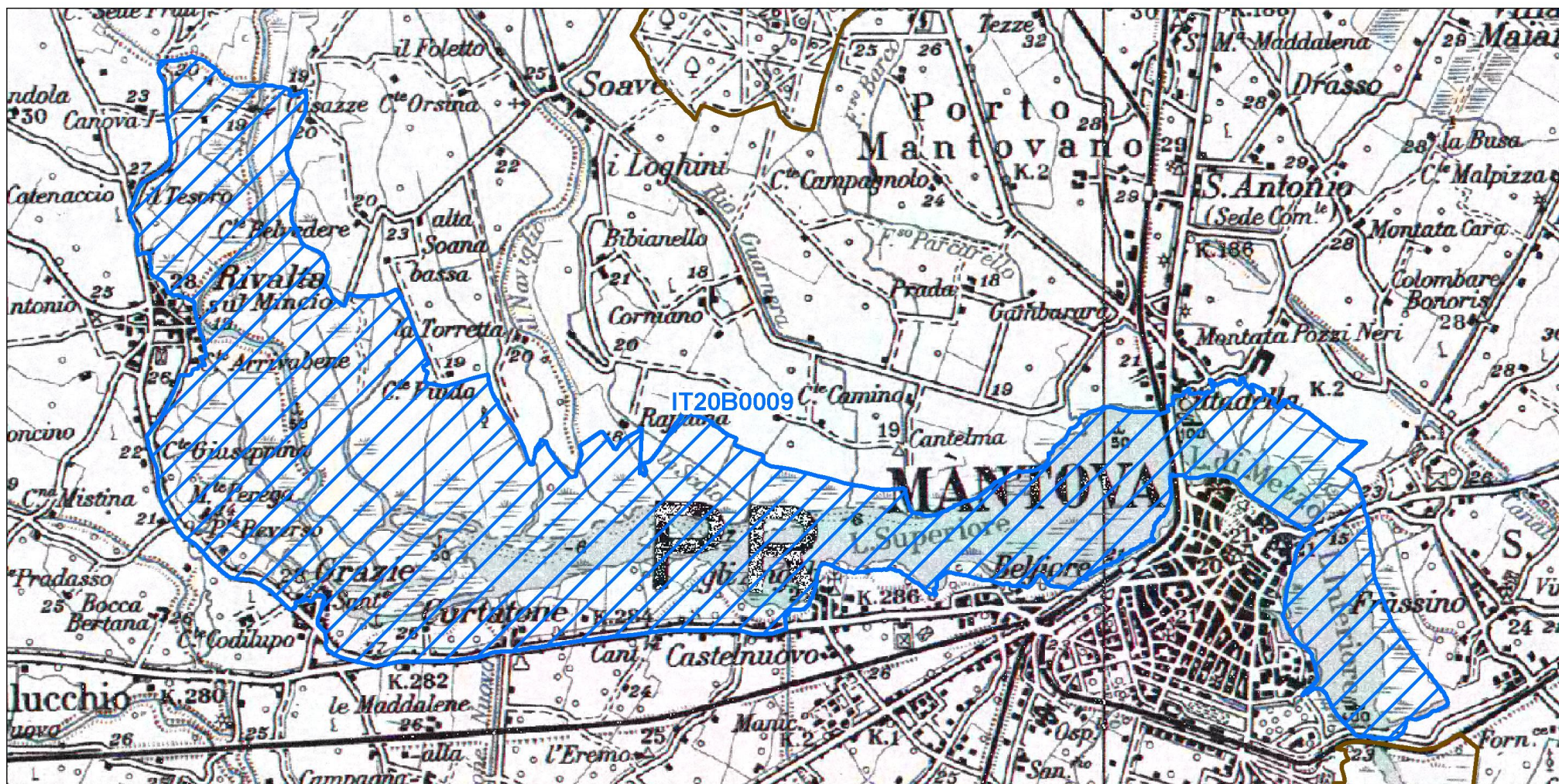
F.136 1:100000 Gauss-Boaga



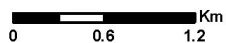
Regione: Lombardia

Codice sito: IT20B0009
Denominazione: Valli del Mincio

Superficie (ha): 1948





Data di stampa: 29/11/2010



Scala 1:50'000

Legenda

-  sito IT20B0009
-  altri siti

Base cartografica: IGM 1:100'000





NATURA 2000 - STANDARD DATA FORM

For Special Protection Areas (SPA),
Proposed Sites for Community Importance (pSCI),
Sites of Community Importance (SCI) and
for Special Areas of Conservation (SAC)

SITE IT20B0010

SITENAME Vallazza

TABLE OF CONTENTS

- [1. SITE IDENTIFICATION](#)
- [2. SITE LOCATION](#)
- [3. ECOLOGICAL INFORMATION](#)
- [4. SITE DESCRIPTION](#)
- [5. SITE PROTECTION STATUS](#)
- [6. SITE MANAGEMENT](#)
- [7. MAP OF THE SITE](#)

1. SITE IDENTIFICATION

1.1 Type C	1.2 Site code IT20B0010	Back to top
----------------------	-----------------------------------	-----------------------------

1.3 Site name

Vallazza

1.4 First Compilation date 1995-11	1.5 Update date 2017-01
--	-----------------------------------

1.6 Respondent:

Name/Organisation:	Regione Lombardia Direzione Generale Ambiente, Energia e Sviluppo Sostenibile - Struttura Valorizzazione aree protette e biodiversità
Address:	Piazza Città di Lombardia 1, 20124 Milano
Email:	ambiente@pec.regione.lombardia.it

1.7 Site indication and designation / classification dates

Date site classified as SPA:	2007-03
National legal reference of SPA designation	D.G.R.4197/2007

Date site proposed as SCI:	1995-06
Date site confirmed as SCI:	No data
Date site designated as SAC:	2016-07

National legal reference of SAC designation:

DM 15/07/2016 G.U. 186 del 10-08-2016

2. SITE LOCATION

2.1 Site-centre location [decimal degrees]:

[Back to top](#)

Longitude

10.831111

Latitude

45.128889

2.2 Area [ha]:

530.0

2.3 Marine area [%]

0.0

2.4 Sitelength [km]:

0.0

2.5 Administrative region code and name

NUTS level 2 code

Region Name

ITC4

Lombardia





2.6 Biogeographical Region(s)

Continental (100.0
%)

3. ECOLOGICAL INFORMATION

3.1 Habitat types present on the site and assessment for them

[Back to top](#)

Annex I Habitat types						Site assessment			
Code	PF	NP	Cover [ha]	Cave [number]	Data quality	A B C D	A B C		
						Representativity	Relative Surface	Conservation	Global
3130 			1.23		G	C	C	B	B
3150 			147.03		G	C	C	B	B
3270 			3.36		G	B	C	C	C
91E0 			154.06		G	C	C	C	B

- **PF:** for the habitat types that can have a non-priority as well as a priority form (6210, 7130, 9430) enter "X" in the column PF to indicate the priority form.
- **NP:** in case that a habitat type no longer exists in the site enter: x (optional)

- **Cover:** decimal values can be entered
- **Caves:** for habitat types 8310, 8330 (caves) enter the number of caves if estimated surface is not available.
- **Data quality:** G = 'Good' (e.g. based on surveys); M = 'Moderate' (e.g. based on partial data with some extrapolation); P = 'Poor' (e.g. rough estimation)

3.2 Species referred to in Article 4 of Directive 2009/147/EC and listed in Annex II of Directive 92/43/EEC and site evaluation for them

Species					Population in the site						Site assessment			
G	Code	Scientific Name	S	NP	T	Size		Unit	Cat.	D.qual.	A B C D		A B C	
						Min	Max				Pop.	Con.	Iso.	
B	A086	Accipiter nisus			p				P	DD	D			
B	A086	Accipiter nisus			r	1	2	p		G	D			
B	A086	Accipiter nisus			c				P	DD	D			
B	A086	Accipiter nisus			w				P	DD	D			
F	1100	Acipenser naccarii			c				V	DD	D			
B	A298	Acrocephalus arundinaceus			r				P	DD	D			
B	A298	Acrocephalus arundinaceus			c				P	DD	D			
B	A293	Acrocephalus melanopogon			c				P	DD	C	B	C	
B	A293	Acrocephalus melanopogon			w				P	DD	C	B	C	
B	A296	Acrocephalus palustris			r				C	DD	D			
B	A296	Acrocephalus palustris			c				C	DD	D			
B	A295	Acrocephalus schoenobaenus			c				P	DD	D			
B	A297	Acrocephalus scirpaceus			c				C	DD	D			
B	A297	Acrocephalus scirpaceus			r				C	DD	D			
B	A168	Actitis hypoleucos			w				R	DD	D			
B	A168	Actitis hypoleucos			c				P	DD	D			
B	A324	Aegithalos caudatus			p				C	DD	D			
B	A324	Aegithalos caudatus			w				C	DD	D			
B	A324	Aegithalos caudatus			r				C	DD	D			
B	A324	Aegithalos caudatus			c				C	DD	D			
B	A247	Alauda arvensis			r				P	DD	D			
B	A247	Alauda arvensis			p				P	DD	D			

B	A247	Alauda arvensis			c				C	DD	D		
B	A229	Alcedo atthis			p	5	7	p		G	C	B	C
F	1103	Alosa fallax			c				R	DD	C	C	C
B	A054	Anas acuta			w	1	5	i		G	D		
B	A054	Anas acuta			c				P	DD	D		
B	A056	Anas clypeata			w	1	5	i		G	D		
B	A056	Anas clypeata			c				P	DD	D		
B	A052	Anas crecca			c				C	DD	C	B	C
B	A052	Anas crecca			w	300	500	i		G	C	B	C
B	A050	Anas penelope			w	6	10	i		G	D		
B	A050	Anas penelope			c				P	DD	D		
B	A053	Anas platyrhynchos			c				C	DD	C	B	C
B	A053	Anas platyrhynchos			w	2000	3000	i		G	C	B	C
B	A053	Anas platyrhynchos			p				C	DD	C	B	C
B	A055	Anas querquedula			c				C	DD	D		
B	A051	Anas strepera			w	100	320	i		G	B	C	C
B	A051	Anas strepera			c				C	DD	B	C	C
B	A043	Anser anser			c				R	DD	D		
B	A043	Anser anser			w				R	DD	D		
B	A257	Anthus pratensis			c				P	DD	D		
B	A257	Anthus pratensis			w				P	DD	D		
B	A259	Anthus spinoletta			c				P	DD	D		
B	A259	Anthus spinoletta			w				P	DD	D		
B	A256	Anthus trivialis			c				P	DD	D		
B	A090	Aquila clanga			w				P	DD	C	B	C
B	A028	Ardea cinerea			p				C	DD	D		
B	A028	Ardea cinerea			c				C	DD	D		
B	A028	Ardea cinerea			r	10	15	p		G	D		
B	A028	Ardea cinerea			w	11	50	i		G	D		
B	A029	Ardea purpurea			r	3	5	p		G	C	B	C
B	A029	Ardea purpurea			c				C	DD	C	B	C
B	A024	Ardeola ralloides			c				C	DD	C	B	C
B	A024	Ardeola ralloides			r				P	DD	D		
B	A221	Asio otus			p				P	DD	D		
B	A221	Asio otus			r	1	5	p		G	D		
B	A221	Asio otus			w				P	DD	D		
B	A221	Asio otus			c				P	DD	D		
B	A218	Athene noctua			p				P	DD	D		
B	A218	Athene noctua			c				P	DD	D		

B	A218	Athene noctua			r				P	DD	D		
B	A218	Athene noctua			w				P	DD	D		
B	A059	Aythya ferina			c				P	DD	D		
B	A059	Aythya ferina			w	1	5	i		G	D		
B	A061	Aythya fuligula			w	1	5	i		G	D		
B	A061	Aythya fuligula			c				P	DD	D		
B	A060	Aythya nyroca			c				P	DD	C	B	C
B	A060	Aythya nyroca			w				P	DD	C	B	C
F	1137	Barbus plebejus			p				C	DD	C	B	C
B	A021	Botaurus stellaris			w	3	6	i		G	C	B	C
B	A025	Bubulcus ibis			p				P	DD	D		
B	A025	Bubulcus ibis			w				P	DD	D		
B	A025	Bubulcus ibis			c				P	DD	D		
B	A067	Bucephala clangula			w	4	10	i		G	D		
B	A087	Buteo buteo			w				C	DD	D		
B	A087	Buteo buteo			c				C	DD	D		
B	A087	Buteo buteo			r	1	1	p		G	D		
B	A145	Calidris minuta			c				R	DD	D		
B	A146	Calidris temminckii			c				P	DD	D		
B	A364	Carduelis carduelis			p				P	DD	D		
B	A364	Carduelis carduelis			w				P	DD	D		
B	A364	Carduelis carduelis			r				P	DD	D		
B	A364	Carduelis carduelis			c				C	DD	D		
B	A363	Carduelis chloris			w				P	DD	D		
B	A363	Carduelis chloris			c				P	DD	D		
B	A363	Carduelis chloris			p				P	DD	D		
B	A363	Carduelis chloris			r				P	DD	D		
B	A365	Carduelis spinus			c				C	DD	D		
B	A365	Carduelis spinus			w				P	DD	D		
B	A288	Cettia cetti			p				C	DD	D		
B	A288	Cettia cetti			w				C	DD	D		
B	A288	Cettia cetti			c				C	DD	D		
B	A288	Cettia cetti			r				C	DD	D		
B	A136	Charadrius dubius			r				P	DD	D		
B	A136	Charadrius dubius			c				C	DD	D		
B	A196	Chlidonias hybridus			c				R	DD	D		
B	A197	Chlidonias niger			c				C	DD	C	B	C
F	1140	Chondrostoma soetta			p				R	DD	D		
B	A031	Ciconia ciconia			c				R	DD	D		
B	A081	Circus aeruginosus			w	6	10	i		G	C	B	C

B	A081	Circus aeruginosus			r				P	DD	D		
B	A081	Circus aeruginosus			c				P	DD	C	B	C
B	A082	Circus cyaneus			w	1	3	i		G	C	B	C
B	A082	Circus cyaneus			c				P	DD	C	B	C
B	A084	Circus pygargus			c				P	DD	C	B	C
B	A289	Cisticola juncidis			c				P	DD	D		
B	A289	Cisticola juncidis			r				P	DD	D		
B	A289	Cisticola juncidis			p				P	DD	D		
B	A289	Cisticola juncidis			w				P	DD	D		
F	5304	Cobitis bilineata			p				P	DD	D		
B	A207	Columba oenas			w				P	DD	D		
B	A207	Columba oenas			c				P	DD	D		
B	A208	Columba palumbus			r				P	DD	D		
B	A208	Columba palumbus			w				C	DD	D		
B	A208	Columba palumbus			p				P	DD	D		
B	A208	Columba palumbus			c				C	DD	D		
B	A349	Corvus corone			w				C	DD	D		
B	A349	Corvus corone			c				P	DD	D		
B	A349	Corvus corone			r				C	DD	D		
B	A349	Corvus corone			p				C	DD	D		
B	A347	Corvus monedula			p				C	DD	D		
B	A113	Coturnix coturnix			c				P	DD	D		
B	A113	Coturnix coturnix			r				R	DD	D		
B	A212	Cuculus canorus			r				P	DD	D		
B	A212	Cuculus canorus			c				P	DD	D		
B	A036	Cygnes olor			w				P	DD	D		
B	A036	Cygnes olor			r	50	400	p		G	D		
B	A036	Cygnes olor			c				P	DD	D		
B	A036	Cygnes olor			p				P	DD	D		
B	A253	Delichon urbica			c				C	DD	D		
B	A237	Dendrocopos major			c				P	DD	D		
B	A237	Dendrocopos major			r				C	DD	D		
B	A237	Dendrocopos major			w				P	DD	D		
B	A237	Dendrocopos major			p				C	DD	D		
B	A027	Egretta alba			w	130	150	i		G	B	B	C
B	A026	Egretta garzetta			r				P	DD	D		
B	A026	Egretta garzetta			w				C	DD	C	B	C
B	A026	Egretta garzetta			c				C	DD	C	B	C
B	A381	Emberiza schoeniclus			c				C	DD	D		
B	A381	Emberiza schoeniclus			r				P	DD	D		

B	A092	pennatus			c				P	DD	D		
B	A131	Himantopus himantopus			r				P	DD	C	B	C
B	A131	Himantopus himantopus			c				P	DD	C	B	C
B	A300	Hippolais polyglotta			c				P	DD	D		
B	A300	Hippolais polyglotta			r				P	DD	D		
B	A251	Hirundo rustica			c				C	DD	D		
B	A022	Ixobrychus minutus			r	10	18	p		G	C	B	C
B	A233	Jynx torquilla			c				C	DD	D		
B	A338	Lanius collurio			r	1	2	p		G	C	B	C
B	A338	Lanius collurio			c				P	DD	C	B	C
B	A184	Larus argentatus			w				V	DD	D		
B	A184	Larus argentatus			c				V	DD	D		
B	A182	Larus canus			w	5	15	i		G	C	B	C
B	A604	Larus michahellis			w	10	15	i		G	D		
B	A604	Larus michahellis			c				P	DD	D		
B	A177	Larus minutus			c				P	DD	D		
B	A177	Larus minutus			w				P	DD	D		
B	A179	Larus ridibundus			c				P	DD	D		
B	A179	Larus ridibundus			w				C	DD	D		
B	A179	Larus ridibundus			p				P	DD	D		
B	A156	Limosa limosa			c				R	DD	D		
B	A292	Locustella luscinioides			r				P	DD	D		
B	A292	Locustella luscinioides			c				P	DD	D		
B	A271	Luscinia megarhynchos			r				C	DD	D		
B	A271	Luscinia megarhynchos			c				C	DD	D		
B	A272	Luscinia svecica			c				P	DD	C	B	C
I	1060	Lycaena dispar			p				P	DD	D		
B	A068	Mergus albellus			w	40664	40664	i		G	D		
B	A068	Mergus albellus			c				P	DD	D		
B	A070	Mergus merganser			c				P	DD	C	B	C
B	A069	Mergus serrator			c				V	DD	D		
B	A069	Mergus serrator			w				V	DD	D		
B	A383	Miliaria calandra			c				P	DD	D		
B	A383	Miliaria calandra			r				R	DD	D		
B	A073	Milvus migrans			c				C	DD	C	B	C
B	A073	Milvus migrans			r	1	2	p		G	C	B	C

B	A262	Motacilla alba			p				P	DD	D		
B	A262	Motacilla alba			w				P	DD	D		
B	A262	Motacilla alba			c				P	DD	D		
B	A262	Motacilla alba			r				R	DD	D		
B	A261	Motacilla cinerea			c				P	DD	D		
B	A261	Motacilla cinerea			w				P	DD	D		
B	A260	Motacilla flava			c				C	DD	D		
B	A260	Motacilla flava			r	2	3	p		G	D		
B	A319	Muscicapa striata			c				C	DD	D		
B	A319	Muscicapa striata			r				C	DD	D		
B	A160	Numenius arquata			c				V	DD	D		
B	A160	Numenius arquata			w				V	DD	D		
B	A158	Numenius phaeopus			c				V	DD	D		
B	A023	Nycticorax nycticorax			r				P	DD	D		
B	A023	Nycticorax nycticorax			c				C	DD	C	B	C
B	A277	Oenanthe oenanthe			c				P	DD	D		
B	A337	Oriolus oriolus			r				C	DD	D		
B	A337	Oriolus oriolus			c				P	DD	D		
I	1084	Osmoderma eremita			p				P	DD	D		
B	A214	Otus scops			c				P	DD	D		
B	A094	Pandion haliaetus			c				P	DD	C	B	C
B	A323	Panurus biarmicus			c				R	DD	D		
B	A323	Panurus biarmicus			w				R	DD	D		
B	A328	Parus ater			c				P	DD	D		
B	A328	Parus ater			w				P	DD	D		
B	A329	Parus caeruleus			r				C	DD	D		
B	A329	Parus caeruleus			p				C	DD	D		
B	A329	Parus caeruleus			w				C	DD	D		
B	A329	Parus caeruleus			c				C	DD	D		
B	A330	Parus major			p				C	DD	D		
B	A330	Parus major			c				C	DD	D		
B	A330	Parus major			w				C	DD	D		
B	A330	Parus major			r				C	DD	D		
B	A354	Passer domesticus			c				P	DD	D		
B	A354	Passer domesticus			r				P	DD	D		
B	A354	Passer domesticus			p				C	DD	D		
B	A354	Passer domesticus			w				P	DD	D		
B	A356	Passer montanus			w				P	DD	D		
B	A356	Passer montanus			r				C	DD	D		

B	A356	Passer montanus			c				C	DD	D		
B	A356	Passer montanus			p				C	DD	D		
B	A072	Pernis apivorus			c				P	DD	D		
B	A017	Phalacrocorax carbo			w	1000	1400	i		G	D		
B	A017	Phalacrocorax carbo			p	5	10	i		G	D		
B	A017	Phalacrocorax carbo			c	5	10	i		G	D		
B	A115	Phasianus colchicus			w	6	10	i		G	D		
B	A151	Philomachus pugnax			c				C	DD	D		
B	A273	Phoenicurus ochruros			w				P	DD	D		
B	A273	Phoenicurus ochruros			c				P	DD	D		
B	A274	Phoenicurus phoenicurus			c				P	DD	D		
B	A313	Phylloscopus bonelli			c				P	DD	D		
B	A315	Phylloscopus collybita			w				C	DD	D		
B	A315	Phylloscopus collybita			c				C	DD	D		
B	A314	Phylloscopus sibilatrix			c				C	DD	D		
B	A316	Phylloscopus trochilus			c				C	DD	D		
B	A343	Pica pica			p				P	DD	C	B	C
B	A235	Picus viridis			p				P	DD	D		
B	A235	Picus viridis			r	1	3	p		G	D		
B	A235	Picus viridis			c				P	DD	D		
B	A235	Picus viridis			w				P	DD	D		
B	A034	Platalea leucorodia			c				R	DD	C	B	C
B	A032	Plegadis falcinellus			c				R	DD	C	B	C
B	A140	Pluvialis apricaria			c				P	DD	C	B	C
B	A005	Podiceps cristatus			p				P	DD	D		
B	A005	Podiceps cristatus			w	40	50	i		G	D		
B	A005	Podiceps cristatus			r				P	DD	D		
B	A005	Podiceps cristatus			c				C	DD	D		
B	A006	Podiceps grisegena			w				V	DD	D		
B	A008	Podiceps nigricollis			w	3	3	i		G	D		
B	A008	Podiceps nigricollis			c				P	DD	D		
B	A120	Porzana parva			c				P	DD	D		
B	A119	Porzana porzana			c				P	DD	C	B	C

F	5962	Protochondrostoma genei			p				R	DD	D			
B	A266	Prunella modularis			w				P	DD	D			
B	A266	Prunella modularis			c				P	DD	D			
B	A118	Rallus aquaticus			p				C	DD	D			
B	A118	Rallus aquaticus			r				P	DD	D			
B	A118	Rallus aquaticus			c				C	DD	D			
B	A118	Rallus aquaticus			w				C	DD	D			
A	1215	Rana latastei			p				C	DD	A		C	A
B	A318	Regulus ignicapillus			c				P	DD	D			
B	A317	Regulus regulus			c				C	DD	D			
B	A336	Remiz pendulinus			r	1	2	p		G	D			
B	A336	Remiz pendulinus			p				P	DD	D			
B	A336	Remiz pendulinus			c				P	DD	D			
B	A336	Remiz pendulinus			w				P	DD	D			
B	A249	Riparia riparia			c				P	DD	D			
F	1114	Rutilus pigus			p				V	DD	D			
B	A275	Saxicola rubetra			c				P	DD	D			
B	A276	Saxicola torquata			w				P	DD	D			
B	A276	Saxicola torquata			c				P	DD	D			
B	A276	Saxicola torquata			p				P	DD	D			
B	A276	Saxicola torquata			r				P	DD	D			
B	A155	Scolopax rusticola			c				P	DD	D			
B	A155	Scolopax rusticola			w				P	DD	D			
B	A361	Serinus serinus			c				C	DD	D			
B	A361	Serinus serinus			p				P	DD	D			
B	A361	Serinus serinus			w				R	DD	D			
B	A361	Serinus serinus			r				P	DD	D			
B	A195	Sterna albifrons			c				C	DD	C		B	C
B	A193	Sterna hirundo			c				C	DD	B		B	C
B	A193	Sterna hirundo			r	10	26	p		G	B		B	C
B	A209	Streptopelia decaocto			p				P	DD	D			
B	A209	Streptopelia decaocto			r				P	DD	D			
B	A210	Streptopelia turtur			c				C	DD	D			
B	A210	Streptopelia turtur			r	2	3	p		G	D			
B	A219	Strix aluco			c				R	DD	D			
B	A219	Strix aluco			r				P	DD	D			
B	A219	Strix aluco			p				P	DD	D			
B	A219	Strix aluco			w				R	DD	D			
B	A351	Sturnus vulgaris			w				C	DD	D			

B	A351	Sturnus vulgaris			c				C	DD	D		
B	A351	Sturnus vulgaris			p				C	DD	D		
B	A351	Sturnus vulgaris			r				C	DD	D		
B	A311	Sylvia atricapilla			p				P	DD	D		
B	A311	Sylvia atricapilla			c				C	DD	D		
B	A311	Sylvia atricapilla			r				C	DD	D		
B	A311	Sylvia atricapilla			w				P	DD	D		
B	A310	Sylvia borin			c				P	DD	D		
B	A309	Sylvia communis			c				P	DD	D		
B	A308	Sylvia curruca			c				P	DD	D		
B	A004	Tachybaptus ruficollis			r				P	DD	D		
B	A004	Tachybaptus ruficollis			c				C	DD	D		
B	A004	Tachybaptus ruficollis			p				P	DD	D		
B	A004	Tachybaptus ruficollis			w	6	10	i		G	D		
B	A048	Tadorna tadorna			w				V	DD	D		
B	A048	Tadorna tadorna			r	1	2	p		G	D		
B	A048	Tadorna tadorna			c				V	DD	D		
B	A161	Tringa erythropus			c				P	DD	D		
B	A166	Tringa glareola			c				P	DD	C	B	C
B	A164	Tringa nebularia			c				P	DD	D		
B	A165	Tringa ochropus			w				V	DD	D		
B	A165	Tringa ochropus			c				P	DD	D		
B	A162	Tringa totanus			c				R	DD	D		
A	1167	Triturus carnifex			p				P	DD	D		
B	A265	Troglodytes troglodytes			w				C	DD	D		
B	A265	Troglodytes troglodytes			c				C	DD	D		
B	A265	Troglodytes troglodytes			p				V	DD	D		
B	A265	Troglodytes troglodytes			r				V	DD	D		
B	A286	Turdus iliacus			c				P	DD	D		
B	A283	Turdus merula			c				C	DD	D		
B	A283	Turdus merula			r				C	DD	D		
B	A283	Turdus merula			w				C	DD	D		
B	A283	Turdus merula			p				C	DD	D		
B	A285	Turdus philomelos			c				P	DD	D		
B	A284	Turdus pilaris			c				P	DD	D		
B	A287	Turdus viscivorus			w				V	DD	D		

B	A287	Turdus viscivorus			c				P	DD	D		
B	A213	Tyto alba			p				P	DD	C	B	C
B	A142	Vanellus vanellus			c				C	DD	C	B	C
B	A142	Vanellus vanellus			w	400	500	i		G	C	B	C

- **Group:** A = Amphibians, B = Birds, F = Fish, I = Invertebrates, M = Mammals, P = Plants, R = Reptiles
- **S:** in case that the data on species are sensitive and therefore have to be blocked for any public access enter: yes
- **NP:** in case that a species is no longer present in the site enter: x (optional)
- **Type:** p = permanent, r = reproducing, c = concentration, w = wintering (for plant and non-migratory species use permanent)
- **Unit:** i = individuals, p = pairs or other units according to the Standard list of population units and codes in accordance with Article 12 and 17 reporting (see [reference portal](#))
- **Abundance categories (Cat.):** C = common, R = rare, V = very rare, P = present - to fill if data are deficient (DD) or in addition to population size information
- **Data quality:** G = 'Good' (e.g. based on surveys); M = 'Moderate' (e.g. based on partial data with some extrapolation); P = 'Poor' (e.g. rough estimation); VP = 'Very poor' (use this category only, if not even a rough estimation of the population size can be made, in this case the fields for population size can remain empty, but the field "Abundance categories" has to be filled in)

3.3 Other important species of flora and fauna (optional)

Species			Population in the site					Motivation						
Group	CODE	Scientific Name	S	NP	Size		Unit	Cat.	Species Annex		Other categories			
					Min	Max		C R V P	IV	V	A	B	C	D
P		Allium angulosum						R			X			
R		Anguis fragilis						P					X	
P		Bellevia romana						V						X
A	1201	Bufo viridis						P	X					
P		Carex riparia						C						X
P		Ceratophyllum demersum						C						X
R	1284	Coluber viridiflavus						P	X					
M		Crocidura suaveolens						P					X	
M	1327	Eptesicus serotinus						P	X					
I		Gomphus flavipes						P					X	
I	1026	Helix pomatia						C		X				
P		Hibiscus moscheutos palustris						R						X
P		Hydrocharis morsus-ranae						R						X
A		Hyla intermedia						P					X	
M		Hypsugo savii						P					X	

P		Viola elatior						V						X
I	1053	Zerynthia polyxena						P	X					

- **Group:** A = Amphibians, B = Birds, F = Fish, Fu = Fungi, I = Invertebrates, L = Lichens, M = Mammals, P = Plants, R = Reptiles
- **CODE:** for Birds, Annex IV and V species the code as provided in the reference portal should be used in addition to the scientific name
- **S:** in case that the data on species are sensitive and therefore have to be blocked for any public access enter: yes
- **NP:** in case that a species is no longer present in the site enter: x (optional)
- **Unit:** i = individuals, p = pairs or other units according to the standard list of population units and codes in accordance with Article 12 and 17 reporting, (see [reference portal](#))
- **Cat.:** Abundance categories: C = common, R = rare, V = very rare, P = present
- **Motivation categories:** **IV, V:** Annex Species (Habitats Directive), **A:** National Red List data; **B:** Endemics; **C:** International Conventions; **D:** other reasons

4. SITE DESCRIPTION

[Back to top](#)

4.1 General site character

Habitat class	% Cover
N10	4.0
N23	2.0
N06	42.0
N20	12.0
N16	17.0
N12	1.0
N08	7.0
N07	15.0
Total Habitat Cover	100

Other Site Characteristics

Si rilevano i seguenti habitat Corine: 22.4311 - Percentuale coperta 3,93 - Rappresentatività C - Superficie relativa C - Grado Conservazione C - Valutazione Globale C 44.1424 - Percentuale coperta 0,08 - Rappresentatività C - Superficie relativa C - Grado Conservazione C - Valutazione Globale C 53.21 - Percentuale coperta 0,06 - Rappresentatività C - Superficie relativa C - Grado Conservazione C - Valutazione Globale C 22.4312 - Percentuale coperta 1,15 - Rappresentatività B - Superficie relativa C - Grado Conservazione B - Valutazione Globale B

4.2 Quality and importance

Sito di grande interesse, caratterizzato da elevata naturalità degli habitat presenti. Grande varietà di habitat idro-igrofilo e presenza di formazioni vegetali tipiche degli ambienti umidi planiziali. Componente floristica caratterizzata da numerose specie e soprattutto da specie rare o rarissime, alcune delle quali inserite nella Lista Rossa. Componente faunistica estremamente ricca e ben differenziata, con presenza, in particolare per l'avifauna, di numerose specie di interesse comunitario, sia come nidificanti che come migratrici. Importante luogo di sosta nel periodo di doppio passo autunnale e primaverile, nonché luogo di svernamento per numerose specie. Significativa anche l'ittiofauna.

4.3 Threats, pressures and activities with impacts on the site

The most important impacts and activities with high effect on the site

Negative Impacts			Positive Impacts		
	Threats			Activities,	Pollution

Rank	and pressures [code]	Pollution (optional) [code]	inside/outside [i o b]
M	D02.01.01		i
L	A01		b
M	D03.02		i
M	D03.01		i

Rank	management [code]	(optional) [code]	inside/outside [i o b]
------	----------------------	----------------------	---------------------------

Rank: H = high, M = medium, L = low

Pollution: N = Nitrogen input, P = Phosphor/Phosphate input, A = Acid input/acidification,

T = toxic inorganic chemicals, O = toxic organic chemicals, X = Mixed pollutions

i = inside, o = outside, b = both

4.4 Ownership (optional)

Type	[%]	
Public	National/Federal	31
	State/Province	0
	Local/Municipal	2
	Any Public	2
Joint or Co-Ownership	0	
Private	65	
Unknown	0	
sum	100	

4.5 Documentation

Bernini F, Bonini L., Ferri V., Gentili A., Razzetti E., Scali S. (2004). Atlante degli Anfibi e dei Rettili della Lombardia. Monografie di Pianura n. 5. Provincia di Cremona. Brichetti P. & Fasola M. (eds), 1990. Atlante degli uccelli nidificanti in Lombardia. Editoriale Ramperto. Fornasari L. & Villa M. (eds), 2001. La fauna dei Parchi lombardi. CD-Rom. Regione Lombardia. Fornasari L., Bottoni L., Massa R., Fasola M., Brichetti P. & Vigorita V. (eds), 1992. Atlante degli uccelli svernanti in Lombardia. Regione Lombardia - Università degli Studi di Milano. Magnani T., Prandi L. "Indagine sulla qualità delle acque del fiume Mincio" Amm. Prov. di Mantova, Assessorato Ambiente Ecologia, U.S.S.L. 47, Mantova. Persico G. "La vegetazione del territorio mantovano", Edizioni Scuola di Cultura Contemporanea, Mantova, 1998. Persico G. Martignoni C. "Riserva Naturale Vallazza: studio floristico-vegetazionale e faunistico finalizzato alla pianificazione della riserva", Mantova, 1996. Poltronieri E., Farhnak F., Ugolini M. Zago A. "Riserva Naturale Vallazza: Piano della Riserva", Mantova. Prigioni C., Cantini M., Zilio A. (2001). Atlante dei mammiferi della Lombardia. Regione Lombardia. Provincia di Mantova "Rapporto sullo stato dell'ambiente nel territorio Mantovano", Mantova, 2001. Tosi G., Martinoli A., Preatoni D., Cerabolini B. & Vigorita V. (eds), 2003. Foreste e biodiversità faunistica in Lombardia - Monitoraggio e conservazione della fauna forestale (Galliformi e Mammiferi). Regione Lombardia - D.G. Agricoltura. Ugolini M. "Riserva Naturale Vallazza, analisi degli aspetti forestali finalizzato alla pianificazione della riserva", Mantova, 1998.

5. SITE PROTECTION STATUS (optional)

5.1 Designation types at national and regional level:

[Back to top](#)

Code	Cover [%]	Code	Cover [%]	Code	Cover [%]
IT05	100.0	IT04	100.0		

6. SITE MANAGEMENT

6.1 Body(ies) responsible for the site management:

[Back to top](#)

Organisation: Ente Gestore del Parco Regionale del Mincio

Address: Piazza Porta Giulia 10 – 46100 Mantova

Email: ambiente@parcodelmincio.it

6.2 Management Plan(s):

An actual management plan does exist:

<input checked="" type="checkbox"/>	Yes	Name: PIANO DI GESTIONE DELLA RISERVA NATURALE "VALLAZZA" E DEL SIC/ZPS IT20B0010 "VALLAZZA" Link: http://www.natura2000.servizirl.it/
<input type="checkbox"/>	No, but in preparation	
<input type="checkbox"/>	No	

6.3 Conservation measures (optional)

Misure di conservazione per la tutela delle ZPS lombarde (DGR 9275 del 23/04/2009); Misure di conservazione sito-specifiche (DGR 4429 del 30/11/2015)

7. MAP OF THE SITES

[Back to top](#)

INSPIRE ID:

Map delivered as PDF in electronic format (optional)

Yes No

Reference(s) to the original map used for the digitalisation of the electronic boundaries (optional).

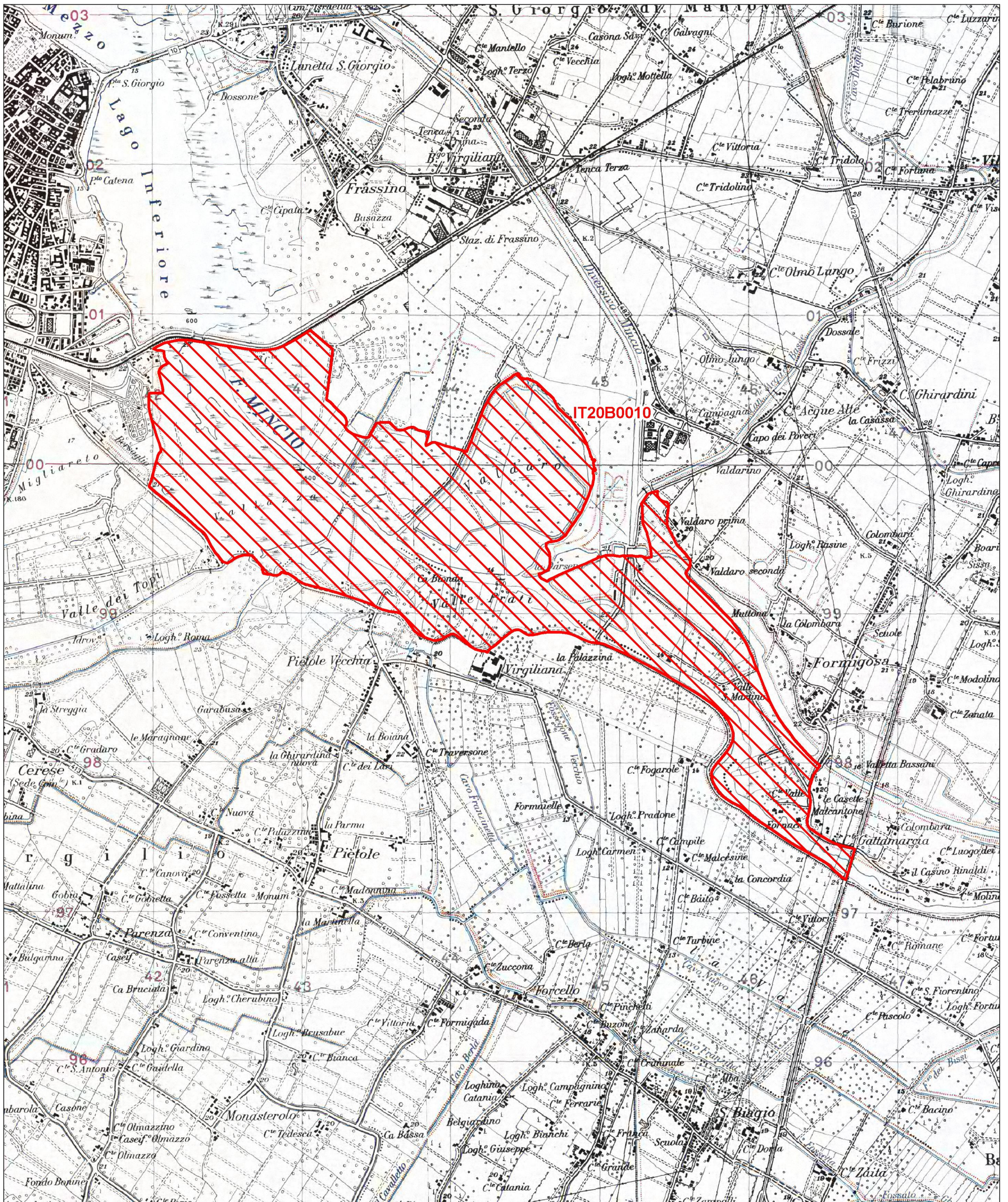
F.143 1:100000 Gauss-Boaga

Regione: Lombardia

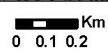
Codice sito: IT20B0010

Superficie (ha): 530

Denominazione: Vallazza



Data di stampa: 06/12/2010


 Km
0 0.1 0.2

Scala 1:25'000

Legenda

-  sito IT20B0010
-  altri siti

Base cartografica: IGM 1:25'000





NATURA 2000 - STANDARD DATA FORM

For Special Protection Areas (SPA),
Proposed Sites for Community Importance (pSCI),
Sites of Community Importance (SCI) and
for Special Areas of Conservation (SAC)

SITE IT20B0014
SITENAME Chiavica del Moro

TABLE OF CONTENTS

- [1. SITE IDENTIFICATION](#)
- [2. SITE LOCATION](#)
- [3. ECOLOGICAL INFORMATION](#)
- [4. SITE DESCRIPTION](#)
- [5. SITE PROTECTION STATUS](#)
- [6. SITE MANAGEMENT](#)
- [7. MAP OF THE SITE](#)

1. SITE IDENTIFICATION

1.1 Type B	1.2 Site code IT20B0014	Back to top
----------------------	-----------------------------------	-----------------------------

1.3 Site name

Chiavica del Moro

1.4 First Compilation date 2006-04	1.5 Update date 2017-01
--	-----------------------------------

1.6 Respondent:

Name/Organisation:	Regione Lombardia Direzione Generale Ambiente, Energia e Sviluppo Sostenibile - Struttura Valorizzazione aree protette e biodiversità
Address:	Piazza Città di Lombardia 1, 20124 Milano
Email:	ambiente@pec.regione.lombardia.it

Date site proposed as SCI:	2006-07
Date site confirmed as SCI:	No data
Date site designated as SAC:	2016-07
National legal reference of SAC designation:	DM 15/07/2016 G.U. 186 del 10-08-2016

2. SITE LOCATION

[Back to top](#)

B	A197	niger				c				P	DD	D				
B	A081	Circus aeruginosus				c				P	DD	D				
B	A082	Circus cyaneus				c				R	DD	D				
B	A084	Circus pygargus				c				R	DD	D				
B	A208	Columba palumbus				p				P	DD	D				
B	A349	Corvus corone				p				C	DD	D				
B	A113	Coturnix coturnix				r	1	1	p		G	D				
B	A036	Cygnus olor				w				P	DD	D				
B	A237	Dendrocopos major				p				P	DD	D				
B	A027	Egretta alba				w	50	100	i		G	B	B	C	C	
B	A026	Egretta garzetta				w	400	400	i		G	D				
R	1220	Emys orbicularis				p				V	DD	D				
B	A098	Falco columbarius				w				P	DD	D				
B	A099	Falco subbuteo				r				P	DD	D				
B	A359	Fringilla coelebs				c				C	DD	D				
B	A359	Fringilla coelebs				p				P	DD	D				
B	A125	Fulica atra				w	1	2	p		G	D				
B	A125	Fulica atra				p	1	2	p		G	D				
B	A125	Fulica atra				c	1	2	p		G	D				
B	A153	Gallinago gallinago				c				R	DD	D				
B	A153	Gallinago gallinago				w				R	DD	D				
B	A123	Gallinula chloropus				w				C	DD	D				
B	A123	Gallinula chloropus				p				C	DD	D				
B	A131	Himantopus himantopus				c				P	DD	D				
B	A300	Hippolais polyglotta				r				P	DD	D				
B	A022	Ixobrychus minutus				r	2	3	p		G	D				
B	A338	Lanius collurio				c				P	DD	D				
B	A338	Lanius collurio				r				V	DD	D				

B	A604	Larus michahellis			c				P	DD	D			
B	A604	Larus michahellis			w				P	DD	D			
B	A179	Larus ridibundus			c				C	DD	D			
B	A179	Larus ridibundus			w				C	DD	D			
I	1060	Lycaena dispar			p				V	DD	D			
B	A073	Milvus migrans			c				P	DD	D			
B	A023	Nycticorax nycticorax			c				C	DD	D			
B	A354	Passer domesticus			p				C	DD	D			
B	A354	Passer domesticus			w				C	DD	D			
B	A356	Passer montanus			p				C	DD	D			
B	A356	Passer montanus			w				C	DD	D			
B	A115	Phasianus colchicus			p				C	DD	D			
B	A151	Philomachus pugnax			c				P	DD	D			
B	A314	Phylloscopus sibilatrix			c				P	DD	D			
B	A343	Pica pica			p	1	2	p		G	D			
B	A343	Pica pica			c	1	2	p		G	D			
B	A120	Porzana parva			c				P	DD	D			
B	A119	Porzana porzana			c				R	DD	D			
B	A118	Rallus aquaticus			p				P	DD	D			
B	A118	Rallus aquaticus			w				P	DD	D			
B	A195	Sterna albifrons			c				V	DD	D			
B	A193	Sterna hirundo			c				C	DD	D			
B	A209	Streptopelia decaocto			c				P	DD	D			
B	A209	Streptopelia decaocto			p				P	DD	D			
B	A210	Streptopelia turtur			p				P	DD	D			
B	A219	Strix aluco			p				R	DD	D			
B	A219	Strix aluco			c				P	DD	D			

P		aestivum aestivum						C							X
R		Natrix natrix						P							X
R	1256	Podarcis muralis						P	X						
P		Salvinia natans						C							X
P		Schoenoplectus lacustris						R							X
P		Spirodela polyrrhiza						C							X
I		Unio mancus						P							X

- **Group:** A = Amphibians, B = Birds, F = Fish, Fu = Fungi, I = Invertebrates, L = Lichens, M = Mammals, P = Plants, R = Reptiles
- **CODE:** for Birds, Annex IV and V species the code as provided in the reference portal should be used in addition to the scientific name
- **S:** in case that the data on species are sensitive and therefore have to be blocked for any public access enter: yes
- **NP:** in case that a species is no longer present in the site enter: x (optional)
- **Unit:** i = individuals, p = pairs or other units according to the standard list of population units and codes in accordance with Article 12 and 17 reporting, (see [reference portal](#))
- **Cat.:** Abundance categories: C = common, R = rare, V = very rare, P = present
- **Motivation categories:** **IV, V:** Annex Species (Habitats Directive), **A:** National Red List data; **B:** Endemics; **C:** International Conventions; **D:** other reasons

4. SITE DESCRIPTION

[Back to top](#)

4.1 General site character

Habitat class	% Cover
N09	11.0
N06	10.0
N08	3.0
N12	26.0
N23	6.0
N16	21.0
N20	23.0
Total Habitat Cover	100

Other Site Characteristics

si segnala la presenza dell'habitat CORINE 53.213.

4.2 Quality and importance

Zona di estrazione di argilla, abbandonata dal dopoguerra, trasformatasi in zona umida dal notevole valore naturalistico. Vi sono presenti habitat importanti tipici delle zone umide; rappresenta inoltre un'importante area di sosta per numerose specie uccelli.

4.3 Threats, pressures and activities with impacts on the site

The most important impacts and activities with high effect on the site

Negative Impacts

Positive Impacts

Rank	Threats and pressures [code]	Pollution (optional) [code]	inside/outside [i o b]
L	A01		i
L	B01.02		i

Rank	Activities, management [code]	Pollution (optional) [code]	inside/outside [i o b]
------	-------------------------------	-----------------------------	------------------------

Rank: H = high, M = medium, L = low

Pollution: N = Nitrogen input, P = Phosphor/Phosphate input, A = Acid input/acidification, T = toxic inorganic chemicals, O = toxic organic chemicals, X = Mixed pollutions

i = inside, o = outside, b = both

4.4 Ownership (optional)

Type	[%]	
Public	National/Federal	26
	State/Province	0
	Local/Municipal	0
	Any Public	2
Joint or Co-Ownership	0	
Private	72	
Unknown	0	
sum	100	

5. SITE PROTECTION STATUS (optional)

5.1 Designation types at national and regional level:

[Back to top](#)

Code	Cover [%]	Code	Cover [%]	Code	Cover [%]
IT04	100.0				

6. SITE MANAGEMENT

6.1 Body(ies) responsible for the site management:

[Back to top](#)

Organisation:	Ente Gestore del Parco Regionale del Mincio
Address:	Piazza Porta Giulia 10 – 46100 Mantova
Email:	ambiente@parcodelmincio.it

6.2 Management Plan(s):

An actual management plan does exist:

<input checked="" type="checkbox"/>	Yes	Name: PIANO DI GESTIONE DEL SIC IT20B0014 "CHIAVICA DEL MORO" Link: http://www.natura2000.servizirl.it/
<input type="checkbox"/>	No, but in preparation	
<input type="checkbox"/>	No	

6.3 Conservation measures (optional)

Misure di conservazione sito-specifiche (DGR 4429 del 30/11/2015)

7. MAP OF THE SITES

[Back to top](#)

INSPIRE ID:

Map delivered as PDF in electronic format (optional)

Yes No

Reference(s) to the original map used for the digitalisation of the electronic boundaries (optional).

F. 143 1:25000 Gauss-Boaga

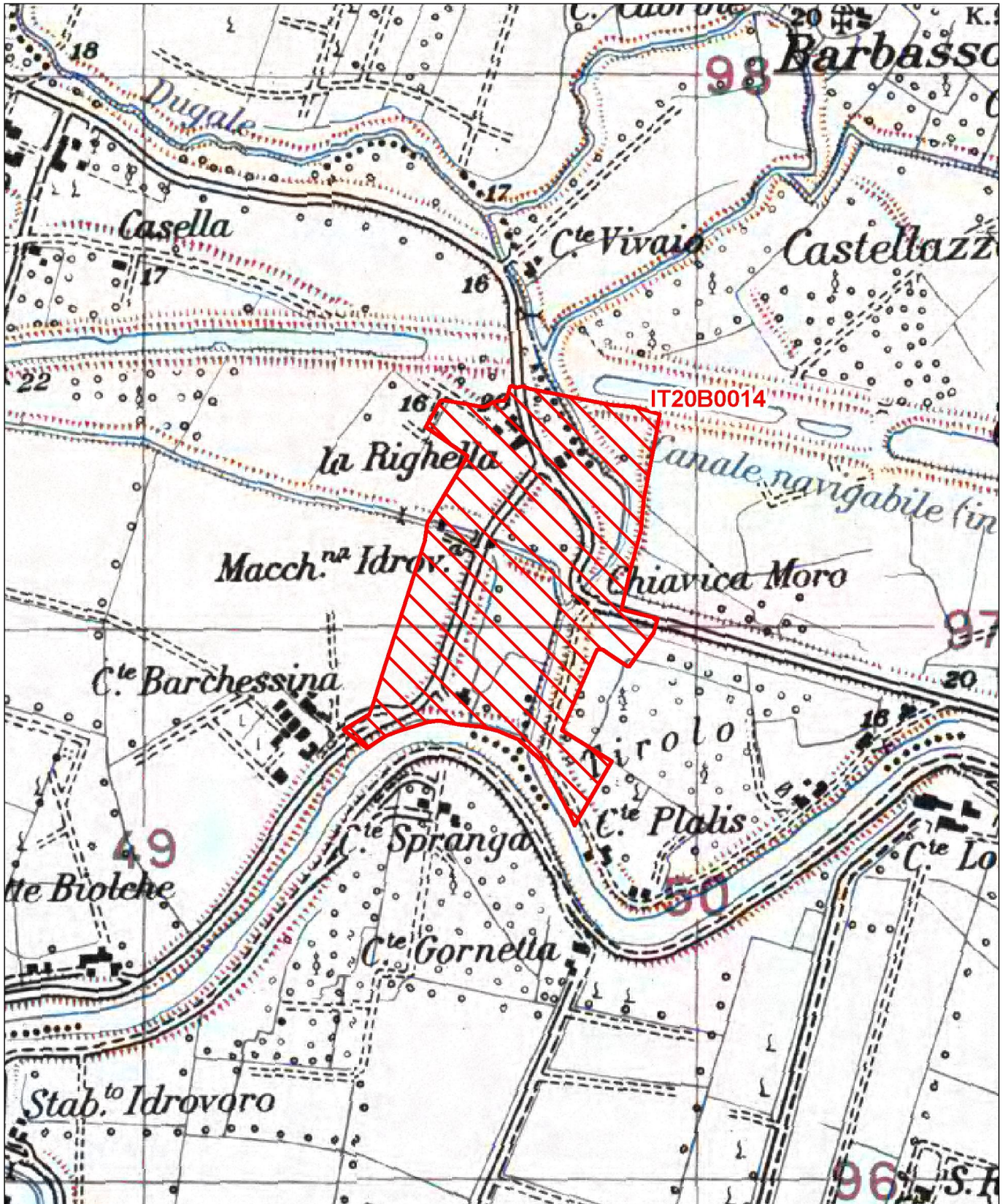


Regione: Lombardia

Codice sito: IT20B0014

Superficie (ha): 25

Denominazione: Chiavica del Moro



Data di stampa: 06/12/2010

0 0.06 0.12 Km

Scala 1:10'000

Legenda

 sito IT20B0014

 altri siti

Base cartografica: IGM 1:25'000

