

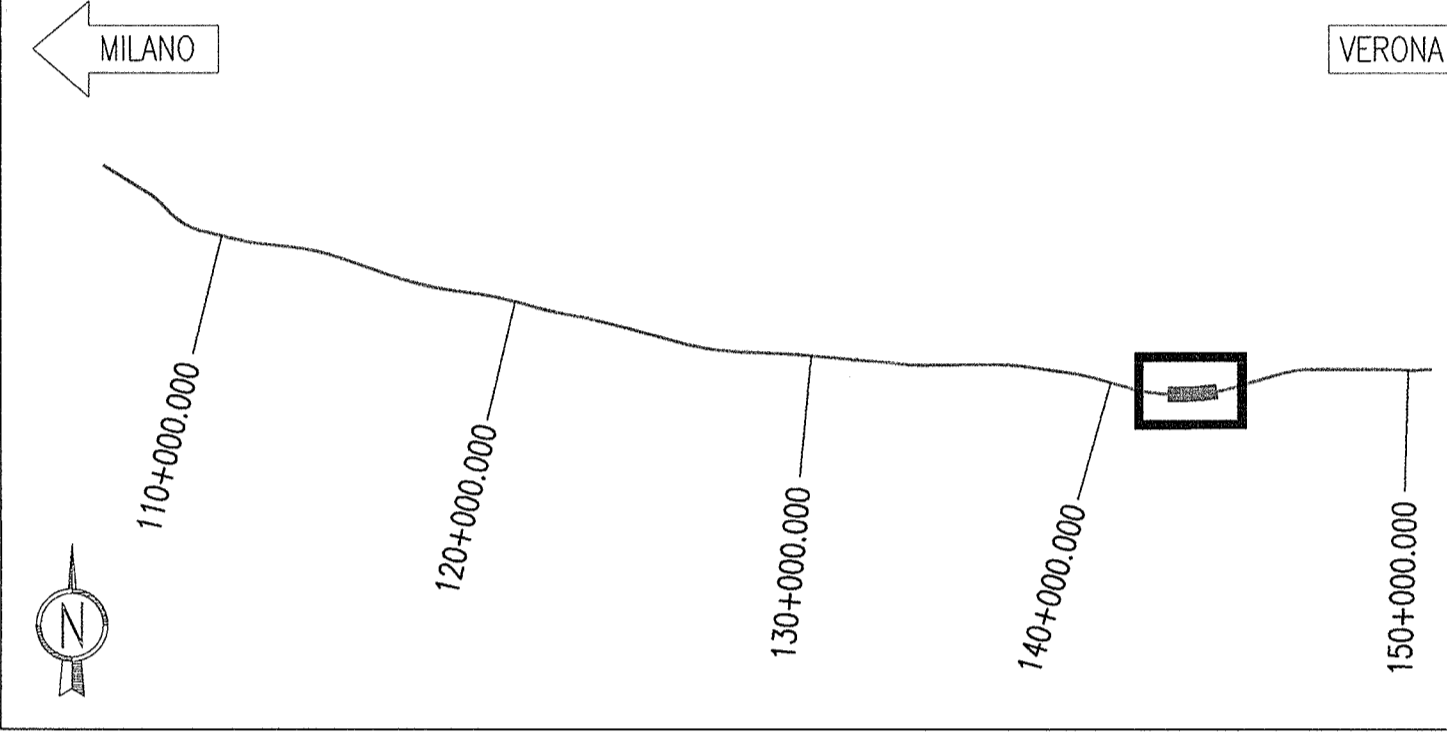
Table with 2 columns: DESCRIZIONE and CODICE. Lists various technical specifications and codes for the project.

NOTE GENERALI

DESCRIZIONE WBS

GA17 GALLERIA ARTIFICIALE POLICENTRICA DA P.K. 141+930.240 A P.K. 143+575.240

KEY PLAN



PROFLO LONGITUDINALE

Scala 1:500

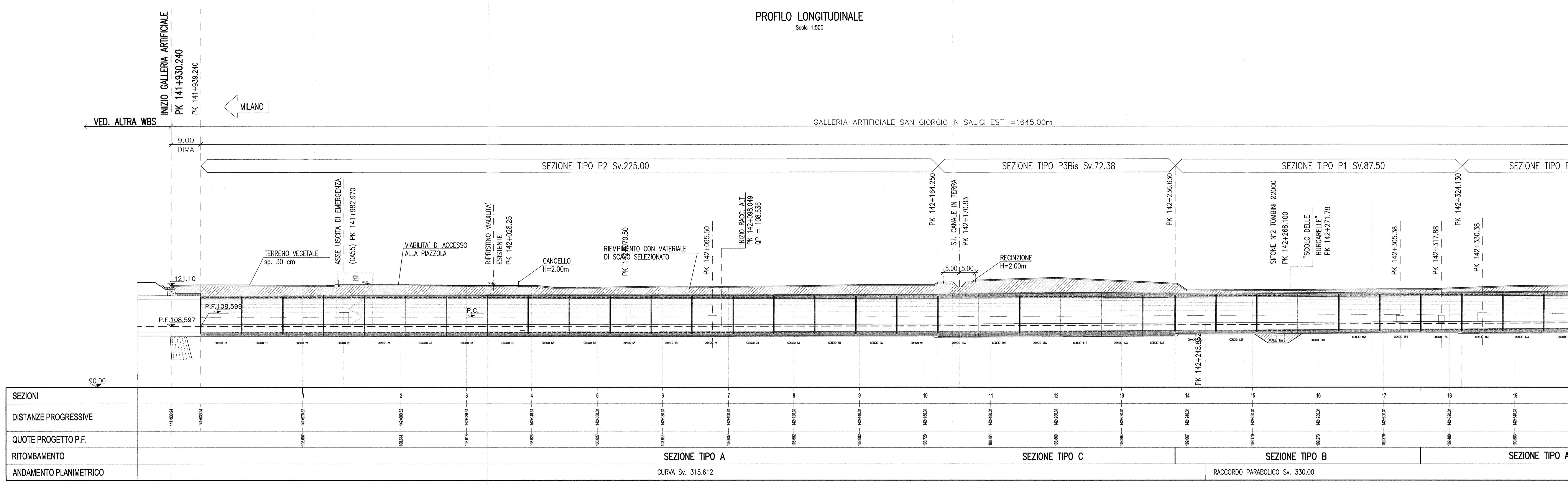


Table with 4 columns: SEZIONI, DISTANZE PROGRESSIVE, QUOTE PROGETTO P.F., and ANDAMENTO PLANIMETRICO. Provides detailed data for the longitudinal profile.

GALLERIA ARTIFICIALE SAN GIORGIO IN SALICI EST l=1645.00m

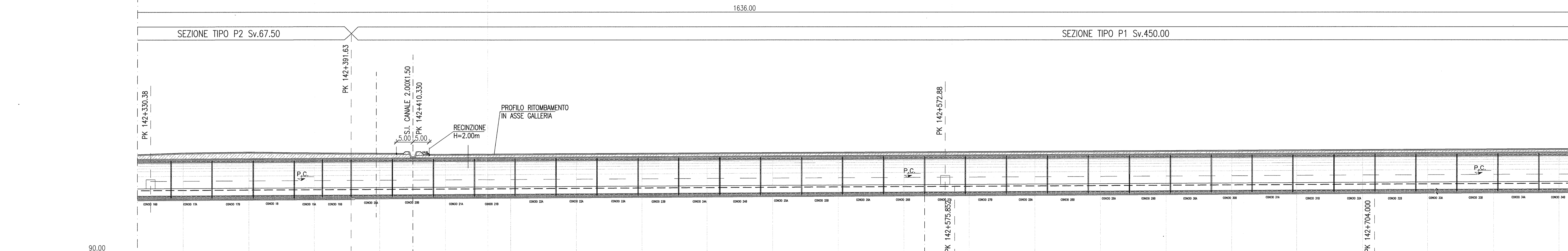
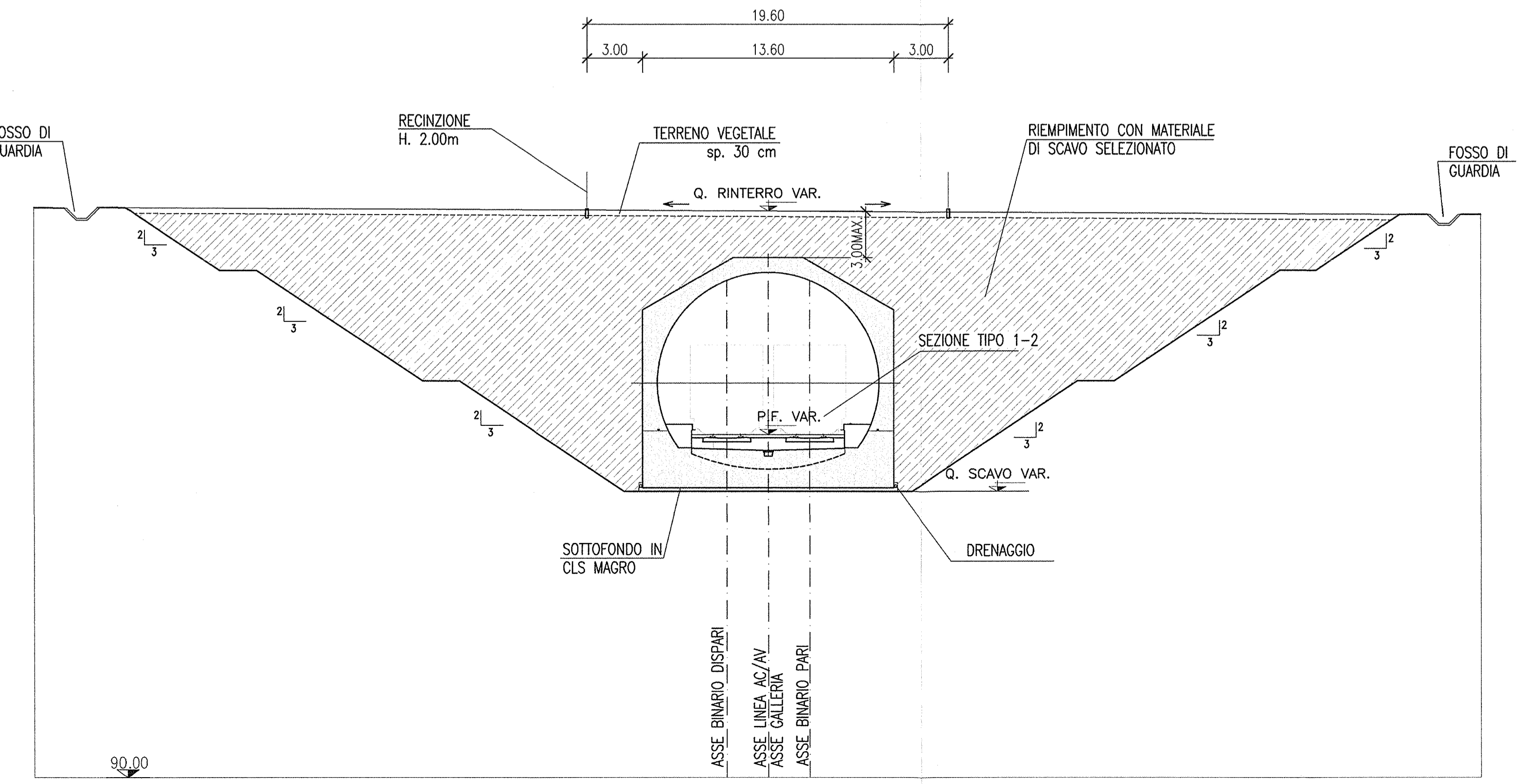
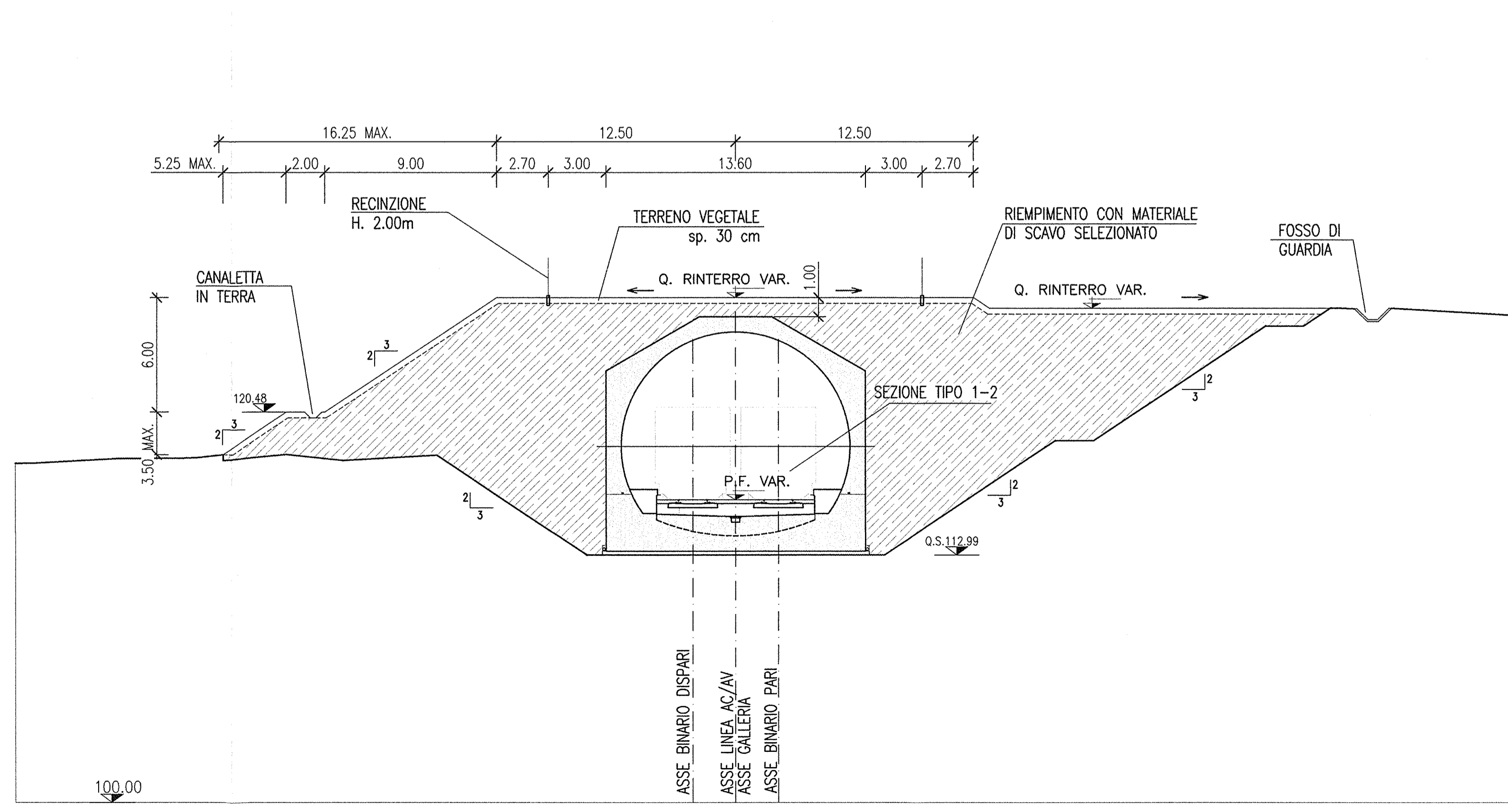


Table with 4 columns: SEZIONI, DISTANZE PROGRESSIVE, QUOTE PROGETTO P.F., and ANDAMENTO PLANIMETRICO. Provides detailed data for the 1645m section.

SEZIONE A (Ritombamento con ripristino del terreno originario)



SEZIONE B (Ritombamento in rilevato sopra la galleria)



Project information block including logos for RFI, ITALFERR, and Cepam due, project name, location, and technical details.