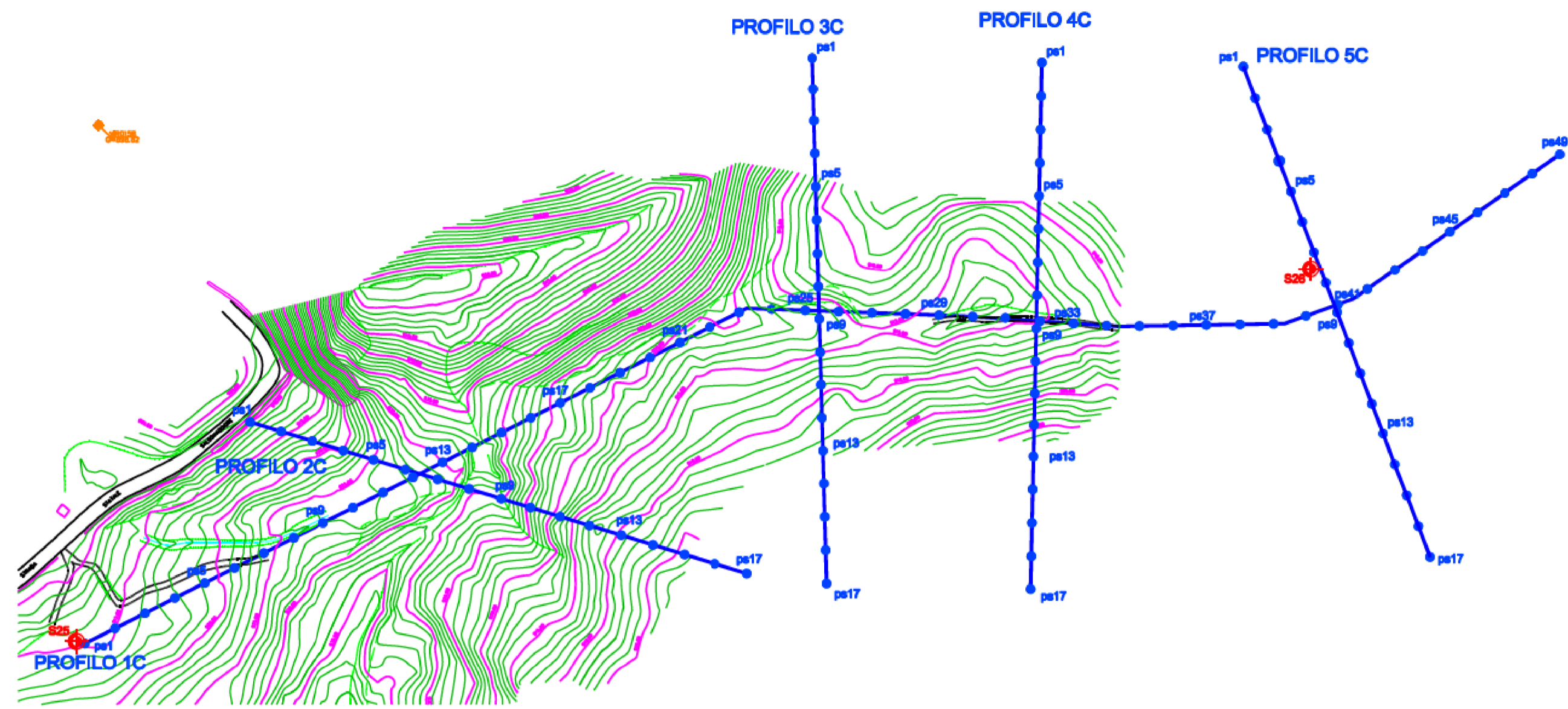


PLANIMETRIA UBICATIVA

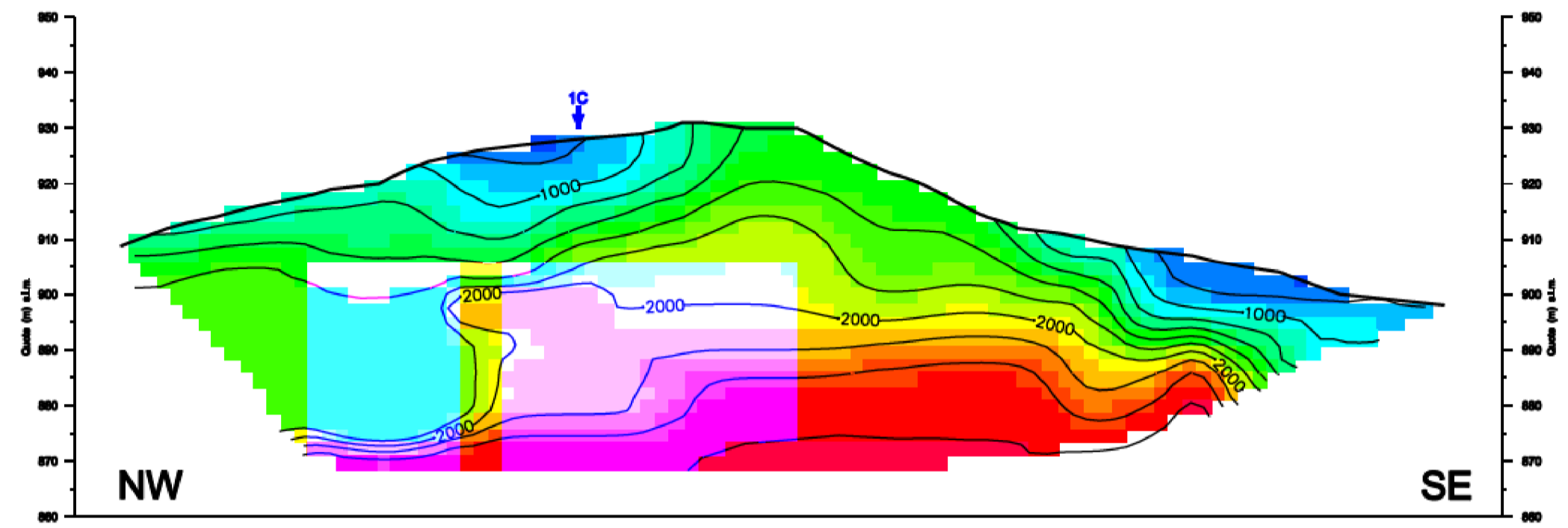
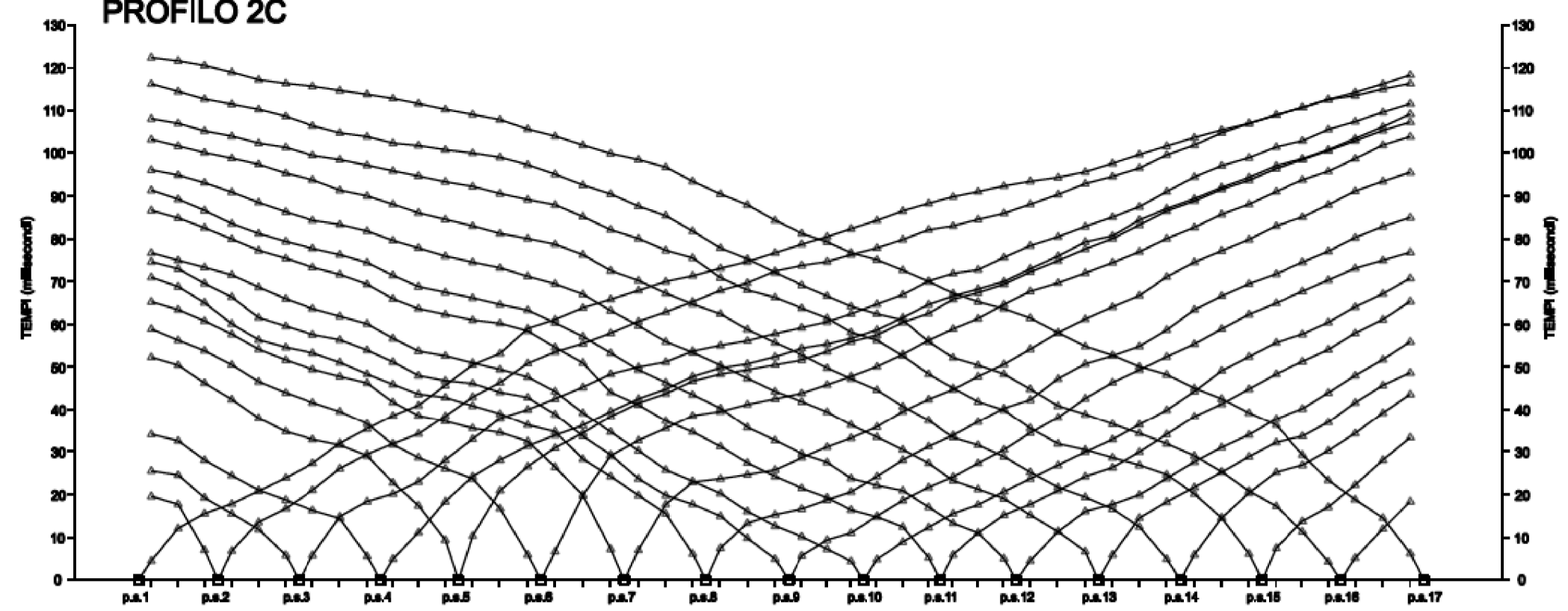
scala 1:2000



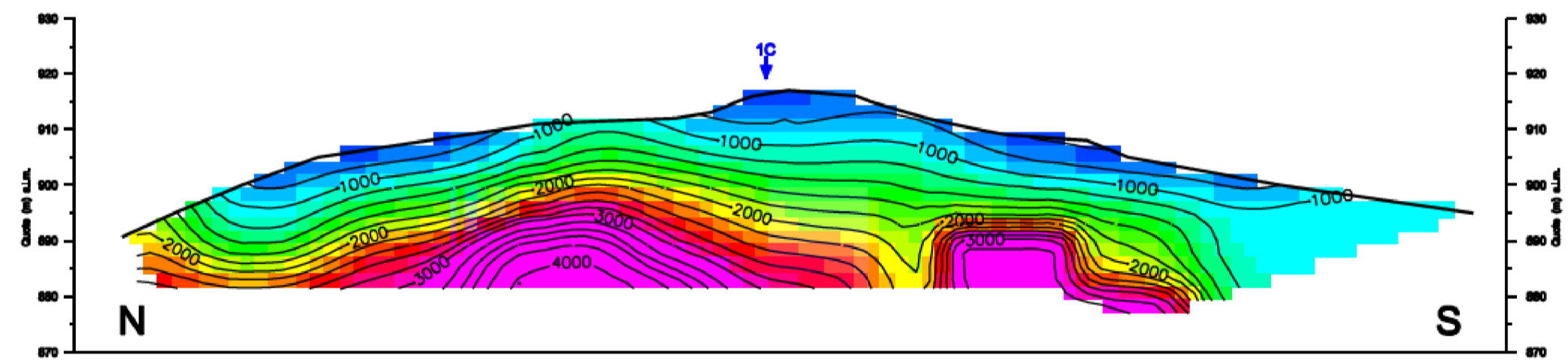
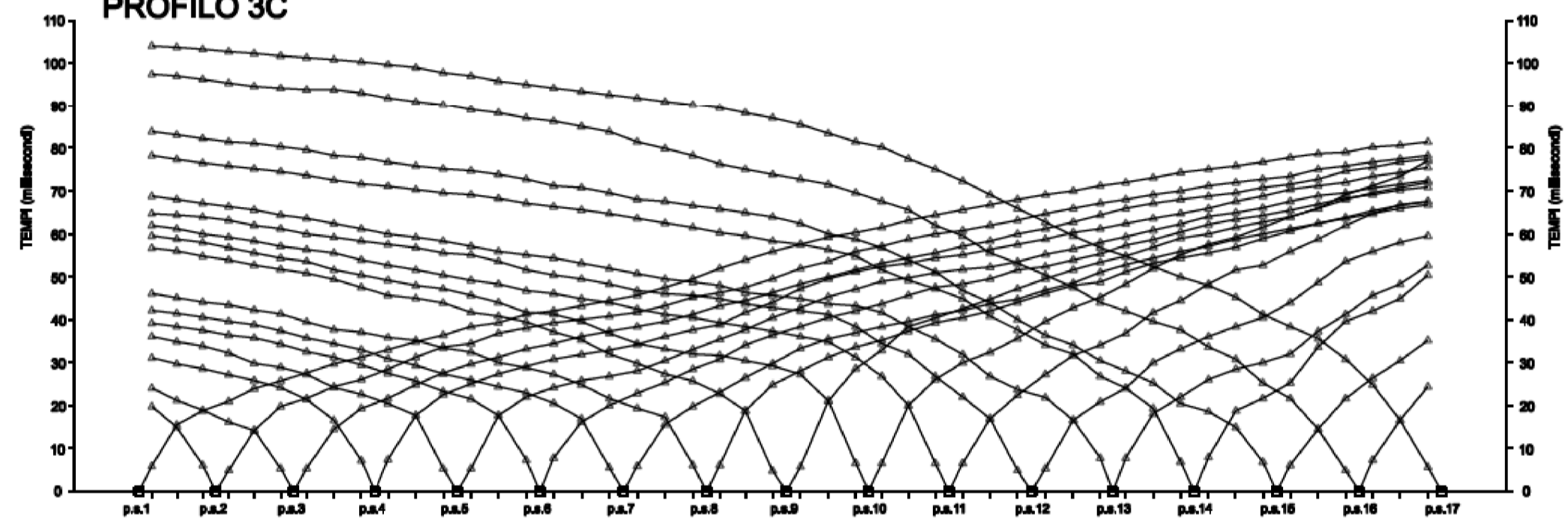
LEGENDA

- PROFILO 3C
Profilo sismico a rifrazione tomografico e relativi punti di scoppio
- Sondaggio geognostico

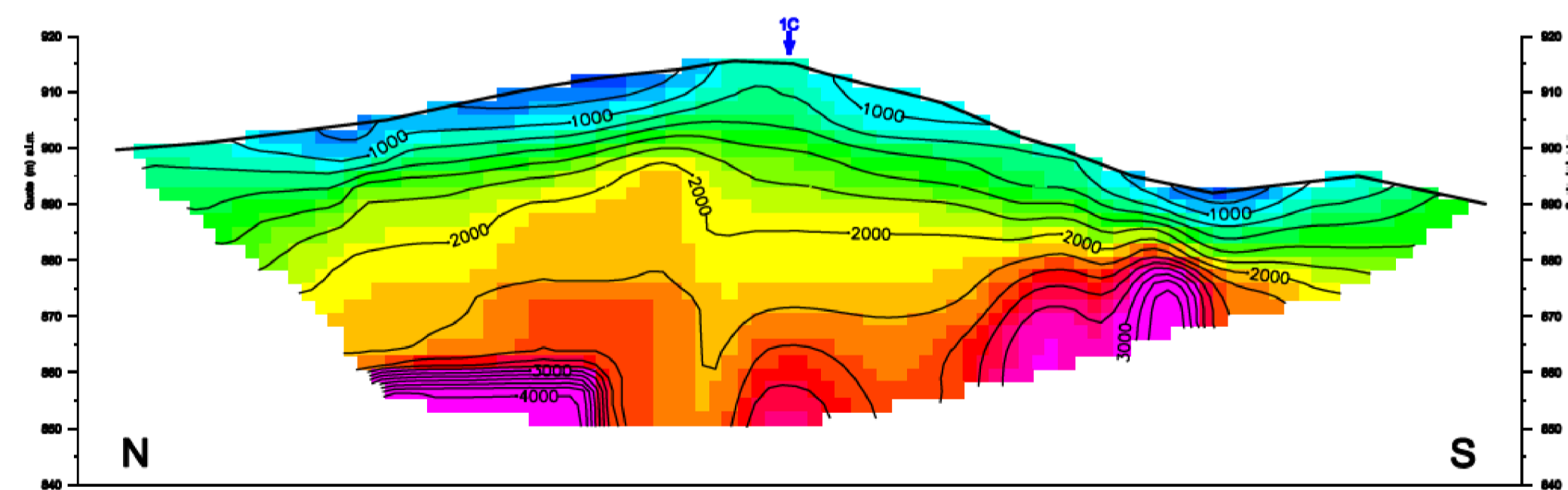
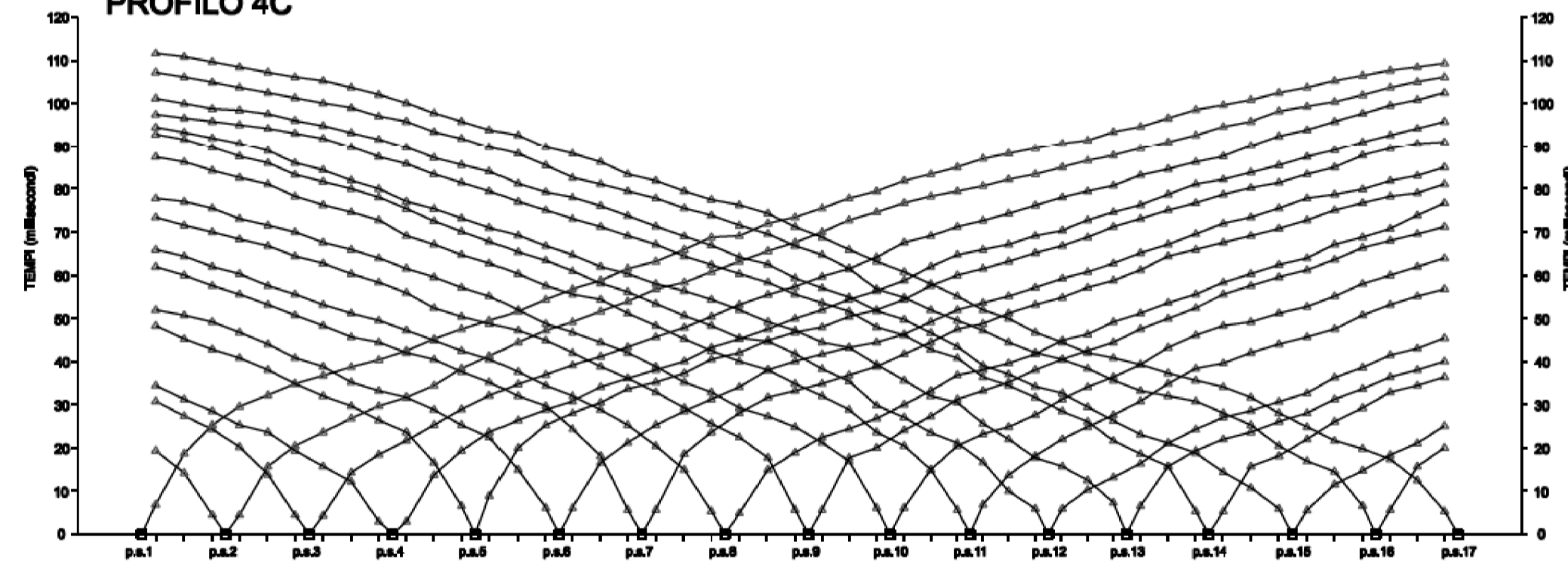
PROFILO 2C



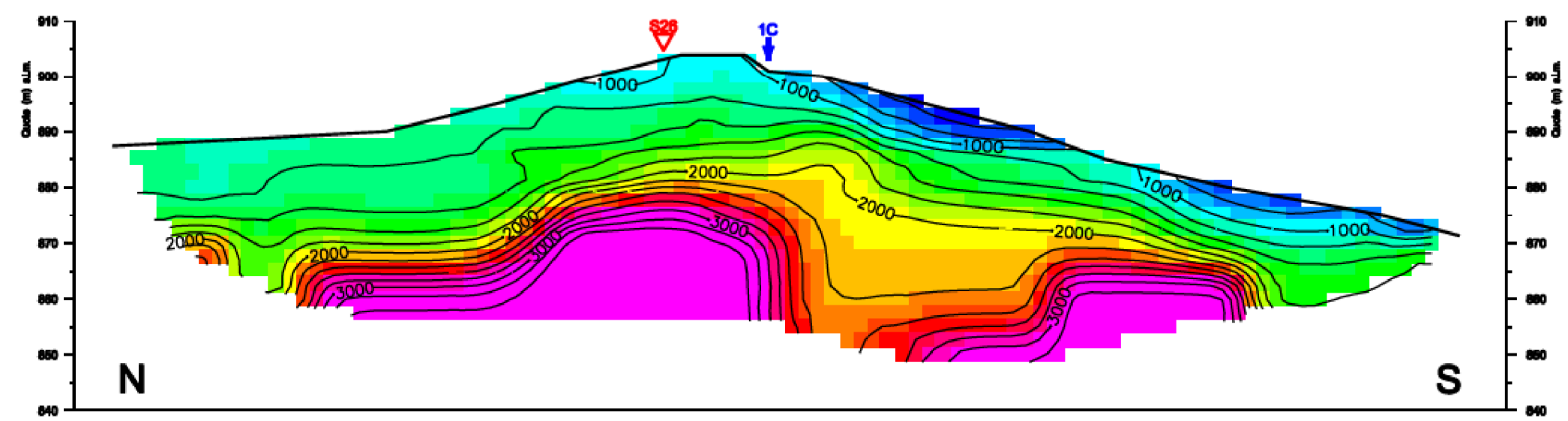
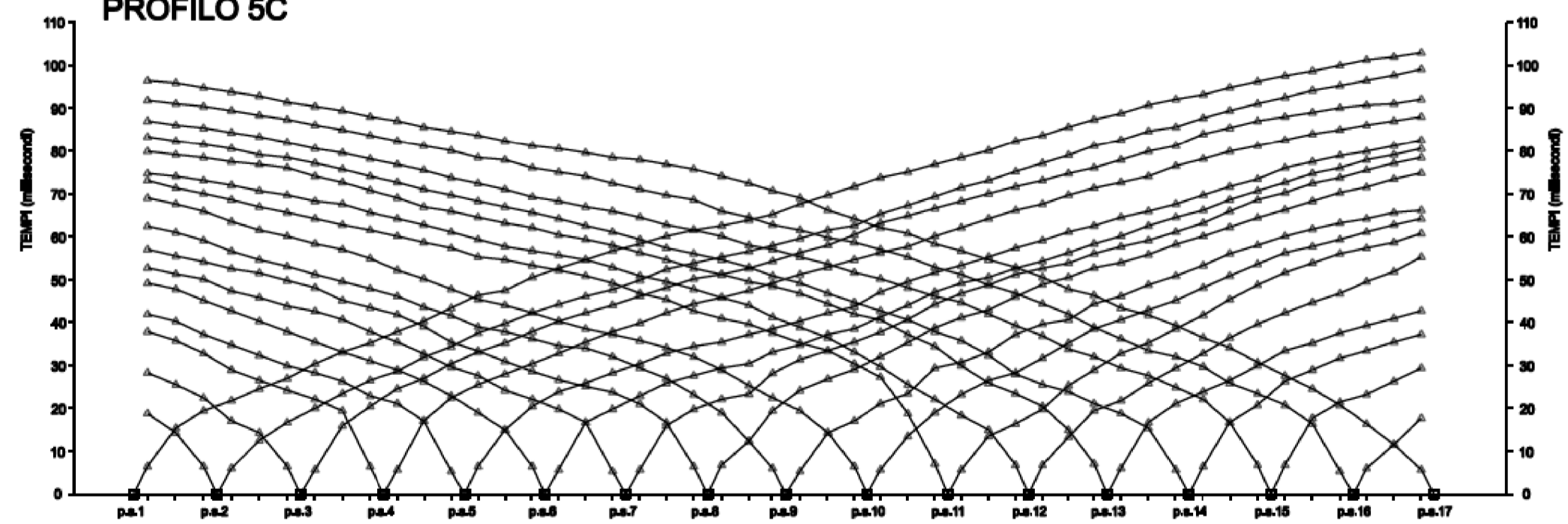
PROFILO 3C



PROFILO 4C



PROFILO 5C



LEGENDA:

- Dromocrone
 - Punto di scoppio
 - Superficie topografica
 - Curve di isovelocità e relativo valore (equidistanza 200 m/s)
 - Intersezione con altro profilo sismico
 - Sondaggio geognostico
 - Maglia cells tomografica 2,5 x 2,5 m
- SCALA COLORIMETRICA (velocità sismica m/s)
- 500 1000 1500 2000 2500 3000

0	MAGGIO 2011	EMISSIONE	SERAFINI	CASATI	SCIOSCI
Rev.	DATA	DESCRIZIONE	ELABORATO	VERIFICATO	APPROVATO
		PROPRIETARIO Snam Rete Gas	PROGETTISTA Snamprogetti	COMMESSA P66990	UNITA' 00
METANODOTTO: PONTREMOLI-CORTEMAGGIORE DN 900 (36") P 75 bar			DISEGNO LB-B-83233		
MONTE CORNALE			REVISIONE 0		
INDAGINE SISMICA A RIFRAZIONE PROFILO 2C-3C-4C-5C			FG. DI		
			SCALA 1:1000 / 1:2000		