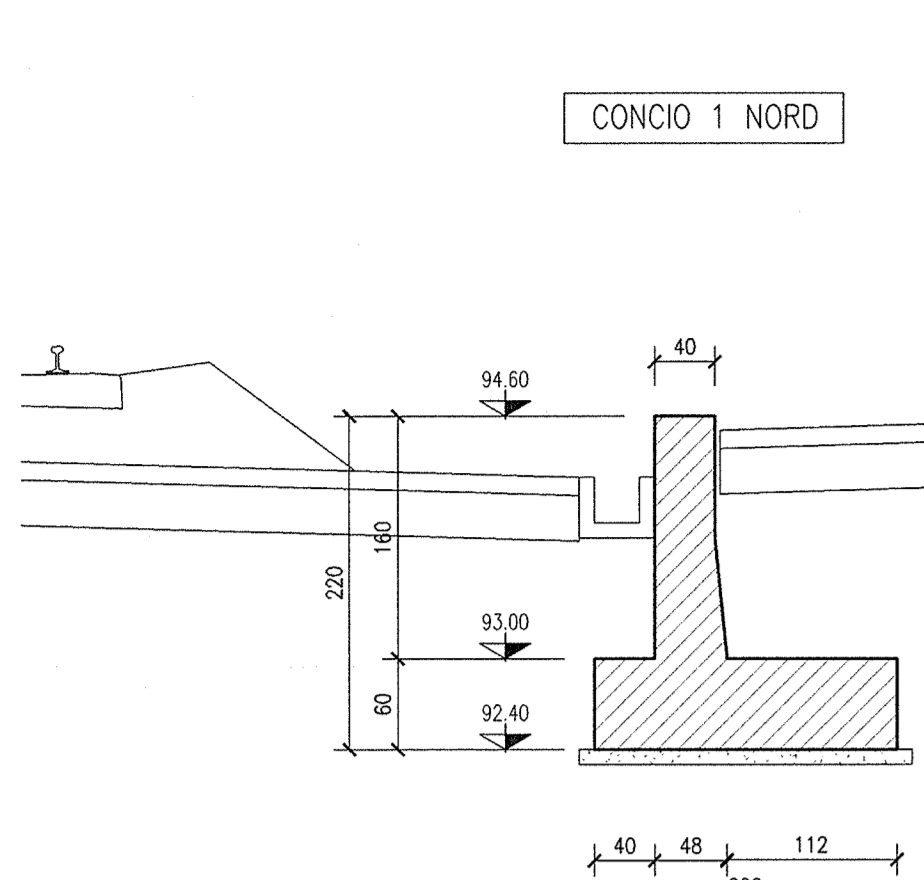
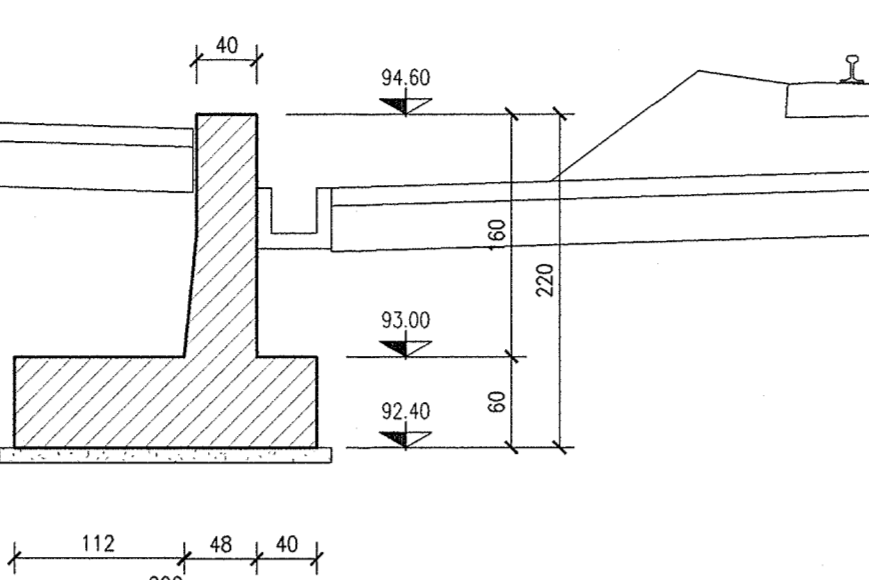


SEZIONI TRASVERSALI MURI LINEA AV/AC

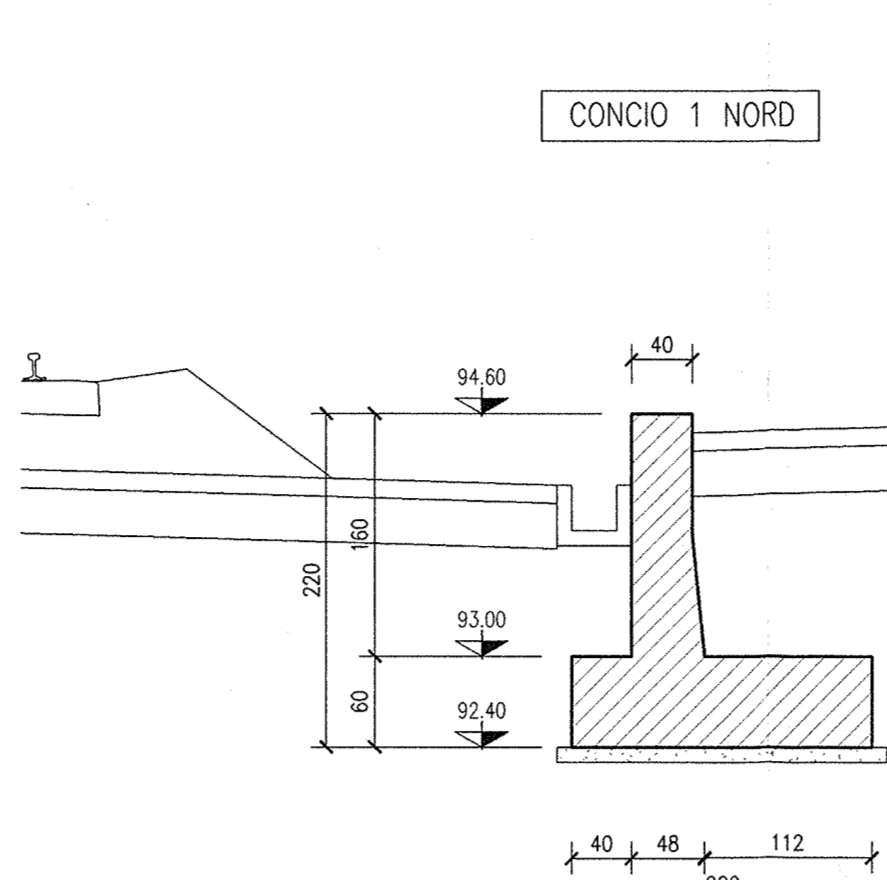
SEZIONE 1-1  
SCALA 1:50



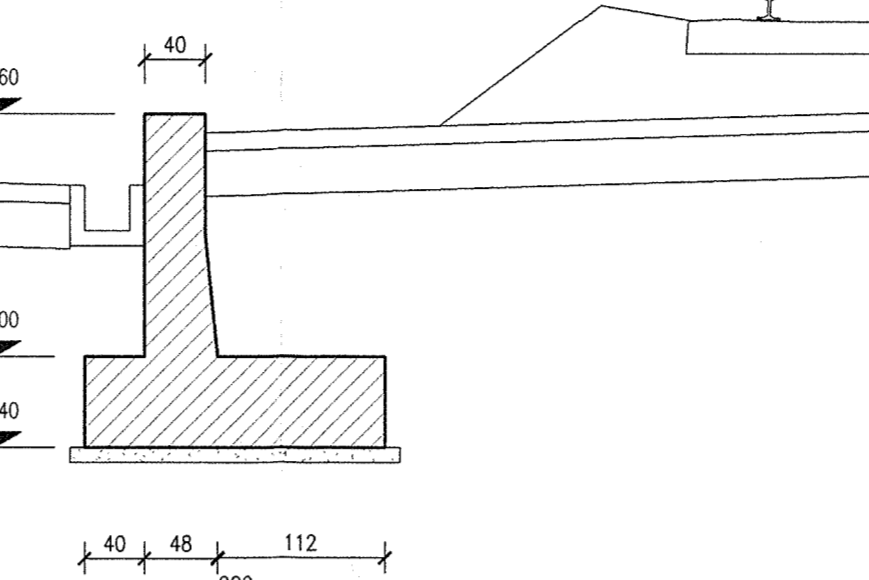
CONCIO 1 SUD



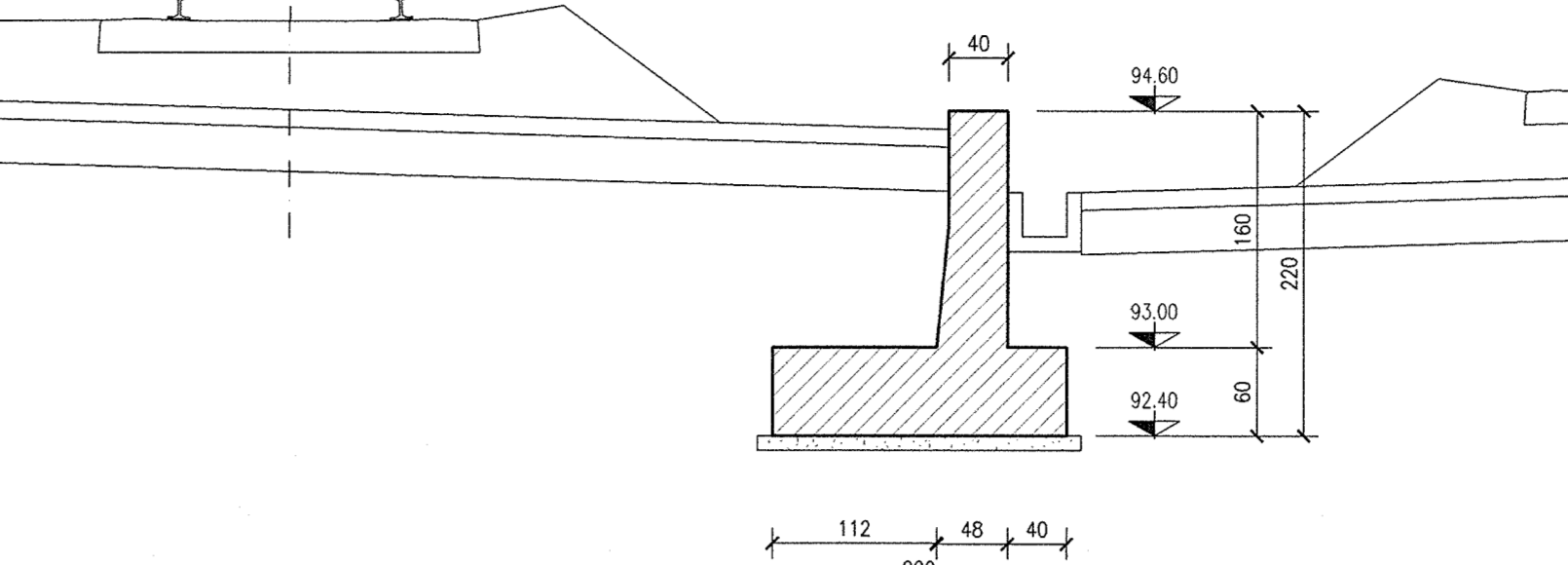
SEZIONE 2-2  
SCALA 1:50



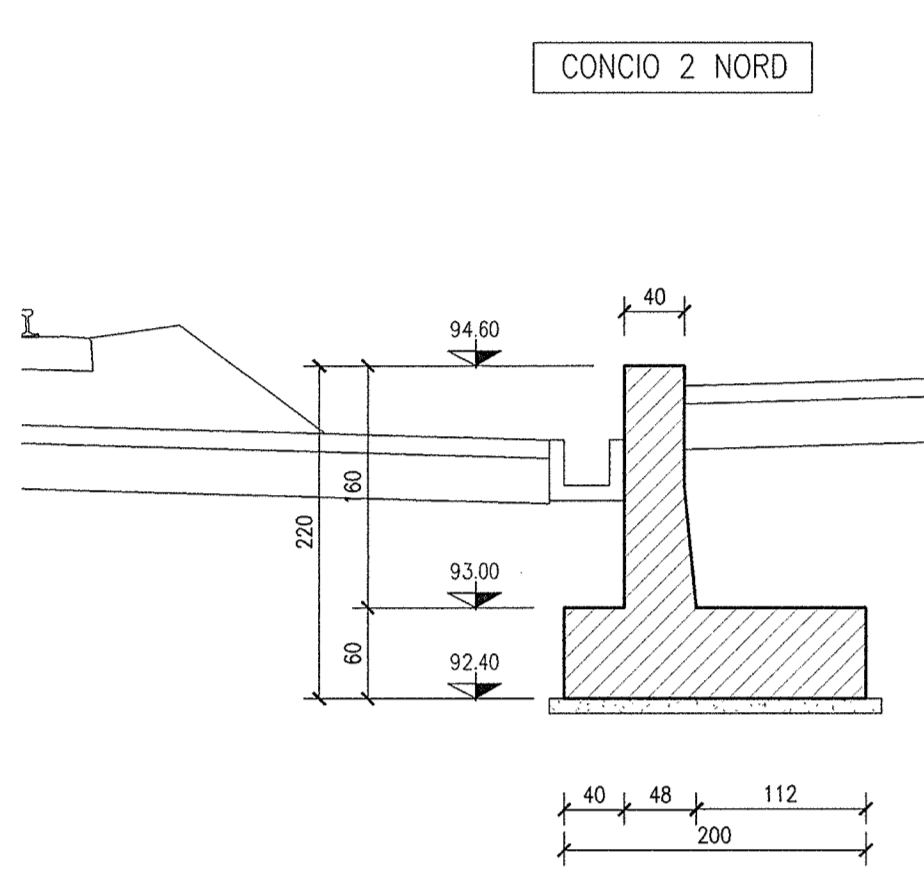
CONCIO 1 SUD



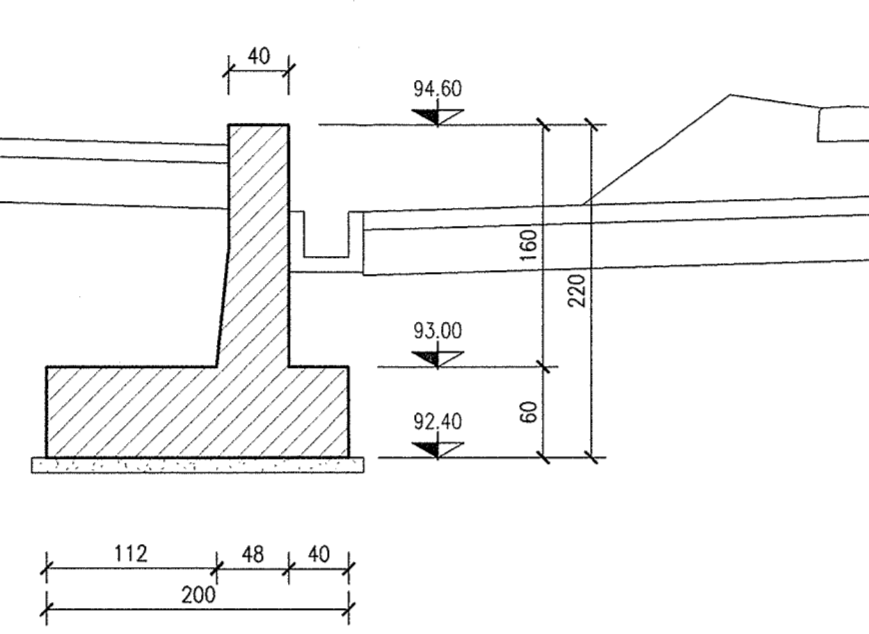
CONCIO 2 SUD



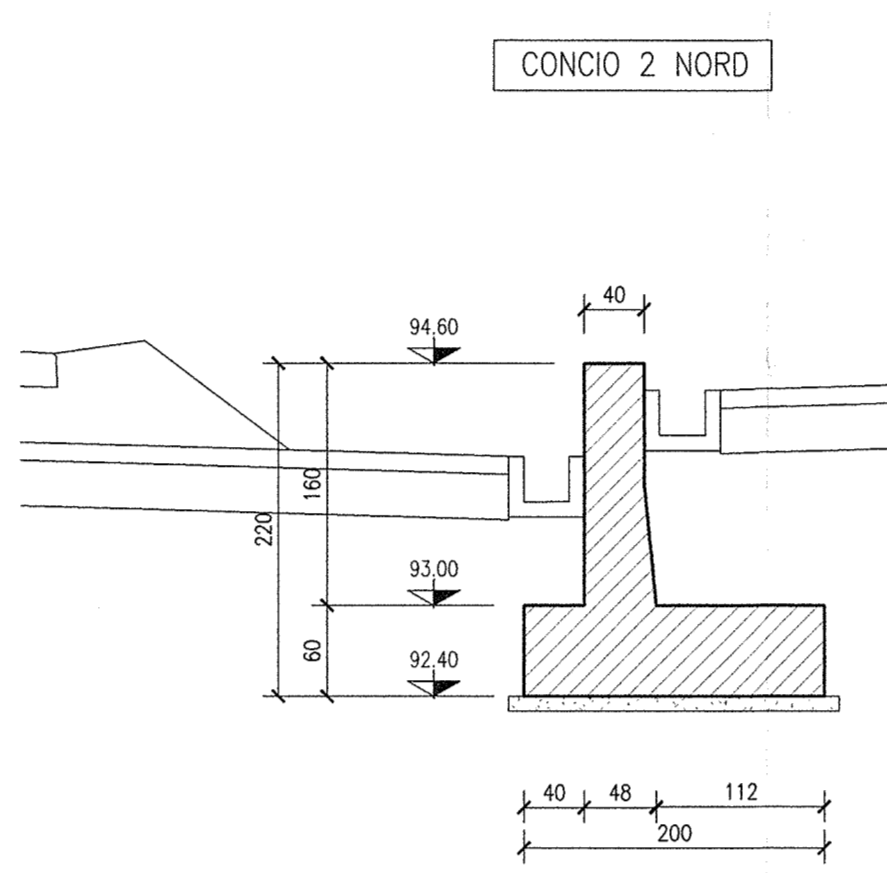
SEZIONE 3-3  
SCALA 1:50



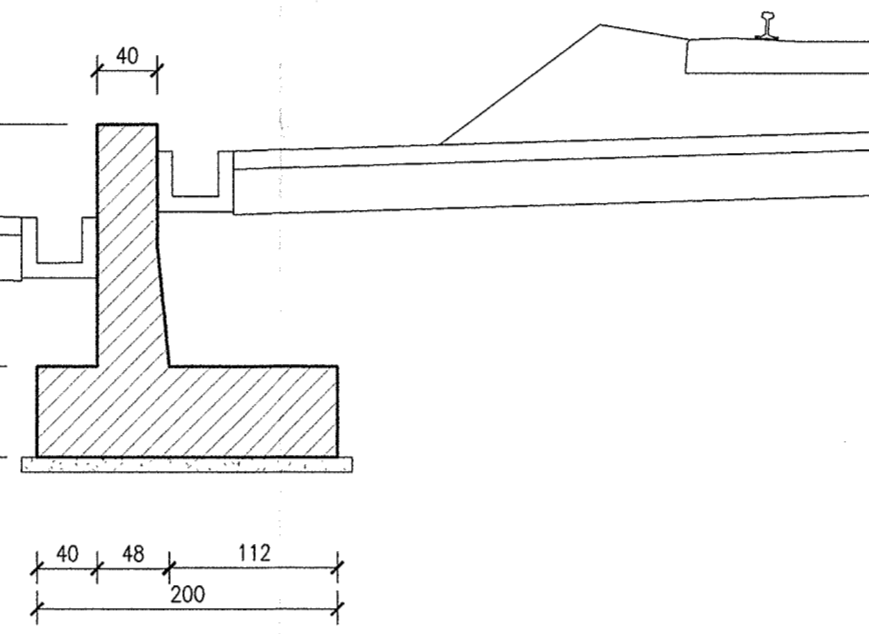
CONCIO 2 SUD



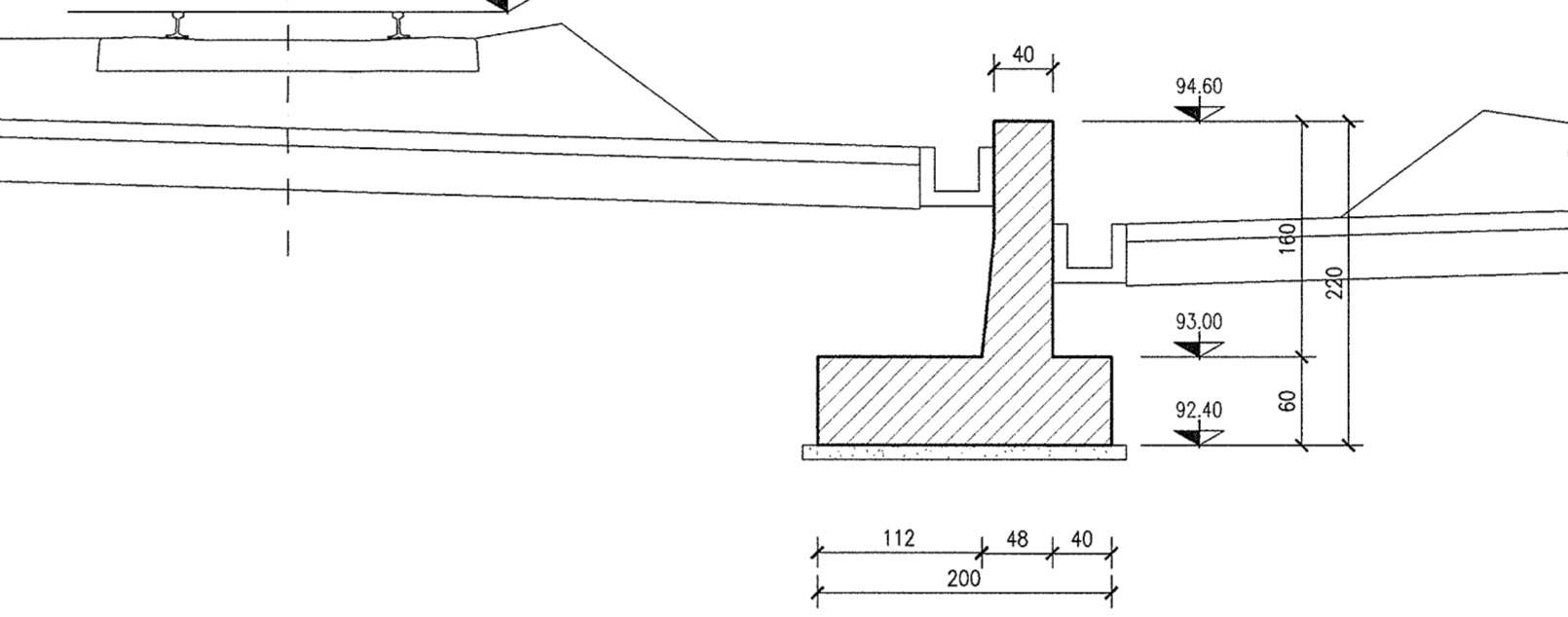
SEZIONE 4-4  
SCALA 1:50



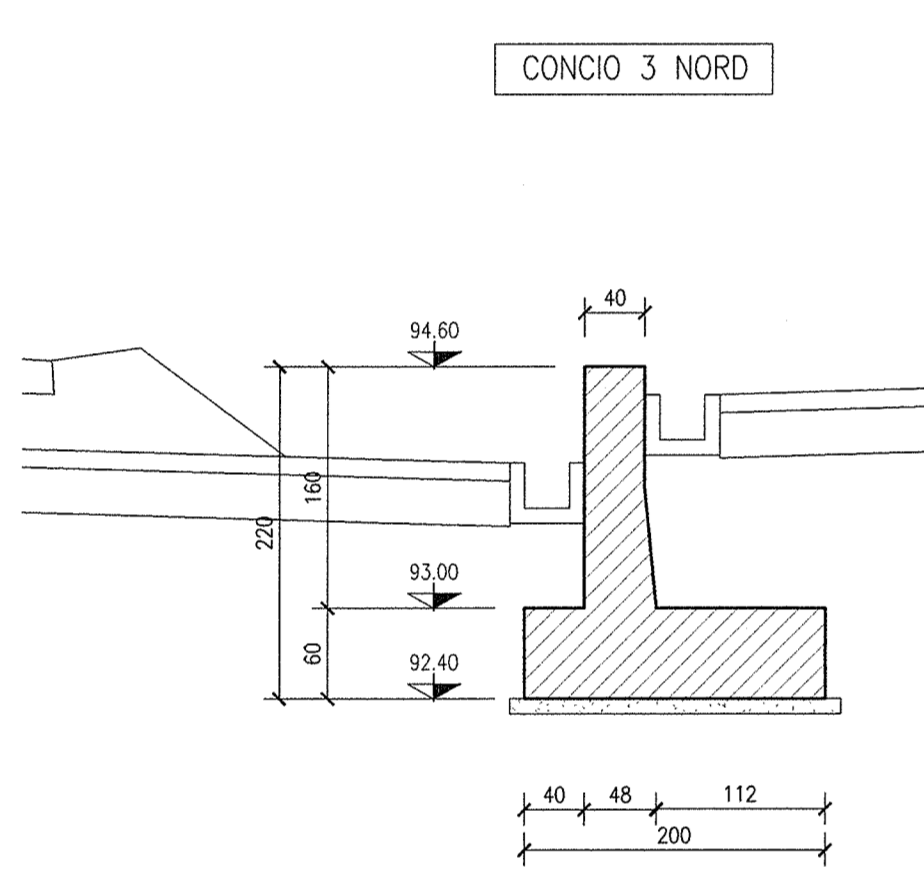
CONCIO 2 SUD



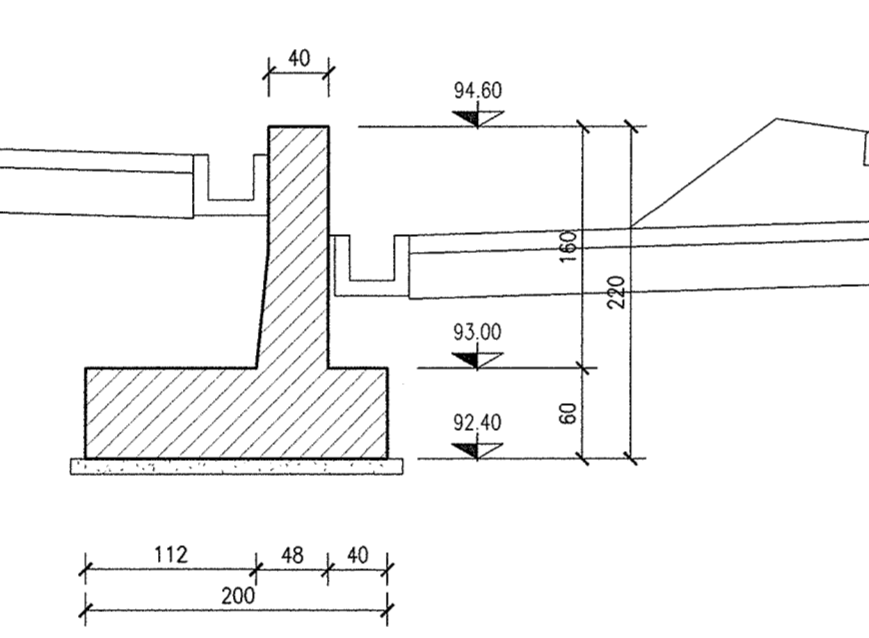
CONCIO 3 SUD



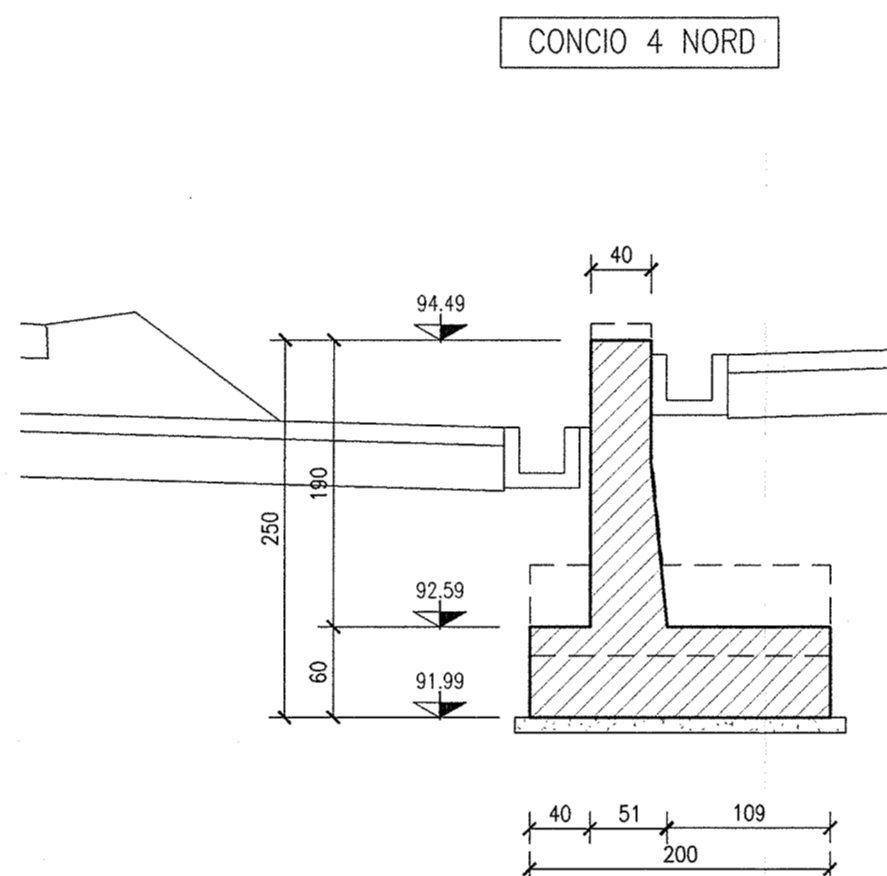
SEZIONE 5-5  
SCALA 1:50



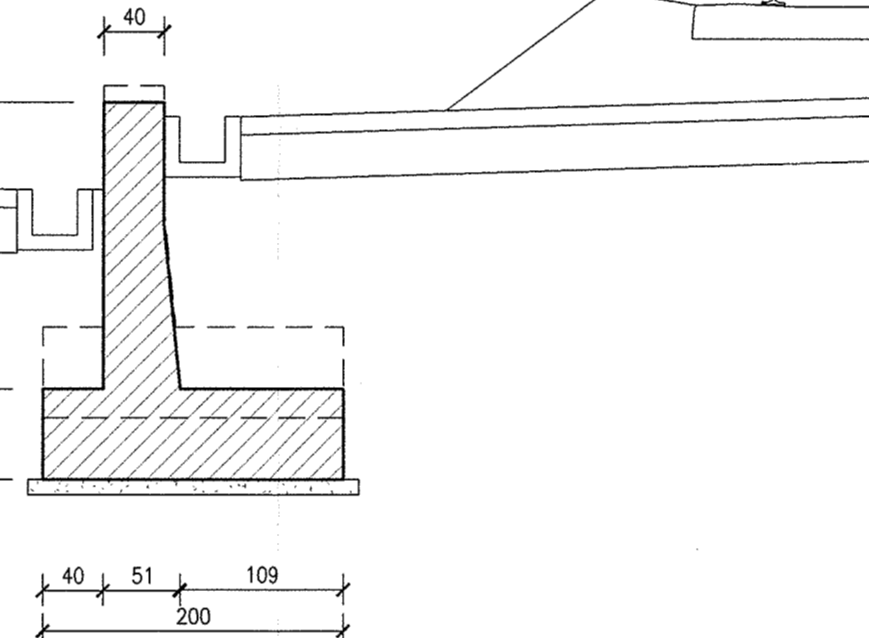
CONCIO 3 SUD



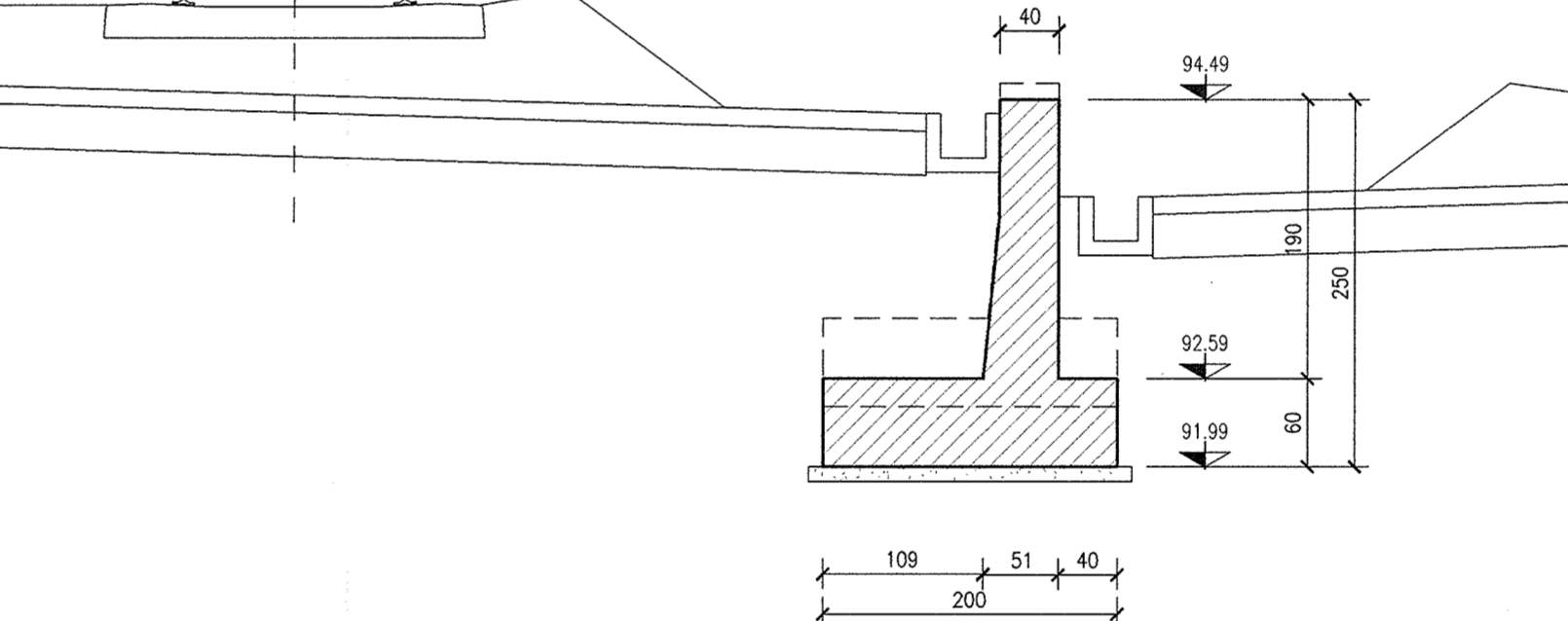
SEZIONE 6-6  
SCALA 1:50



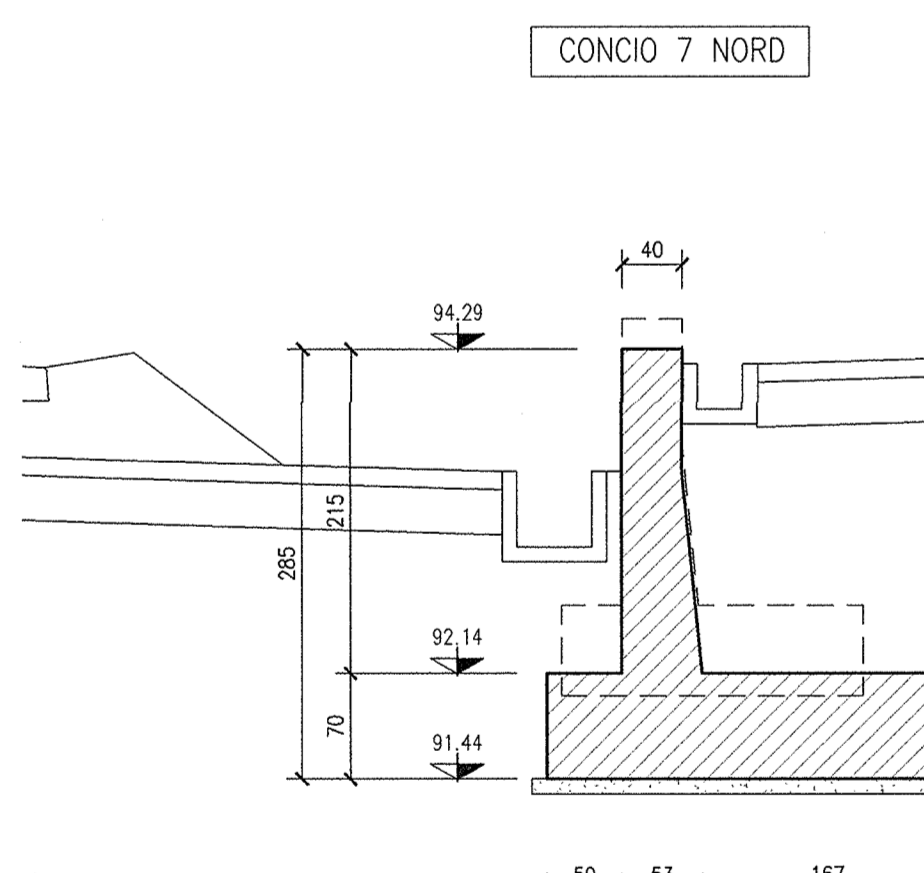
CONCIO 4 SUD



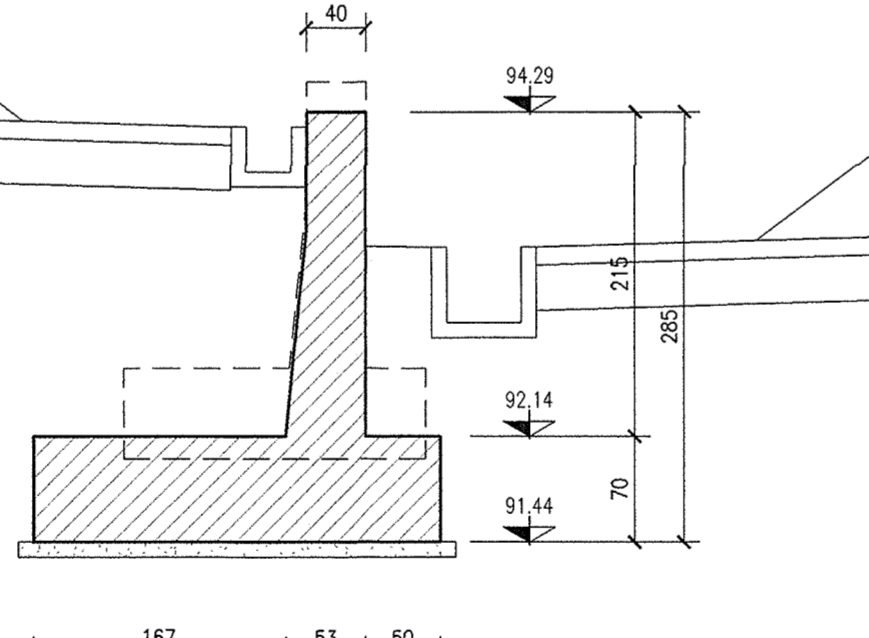
CONCIO 4 SUD



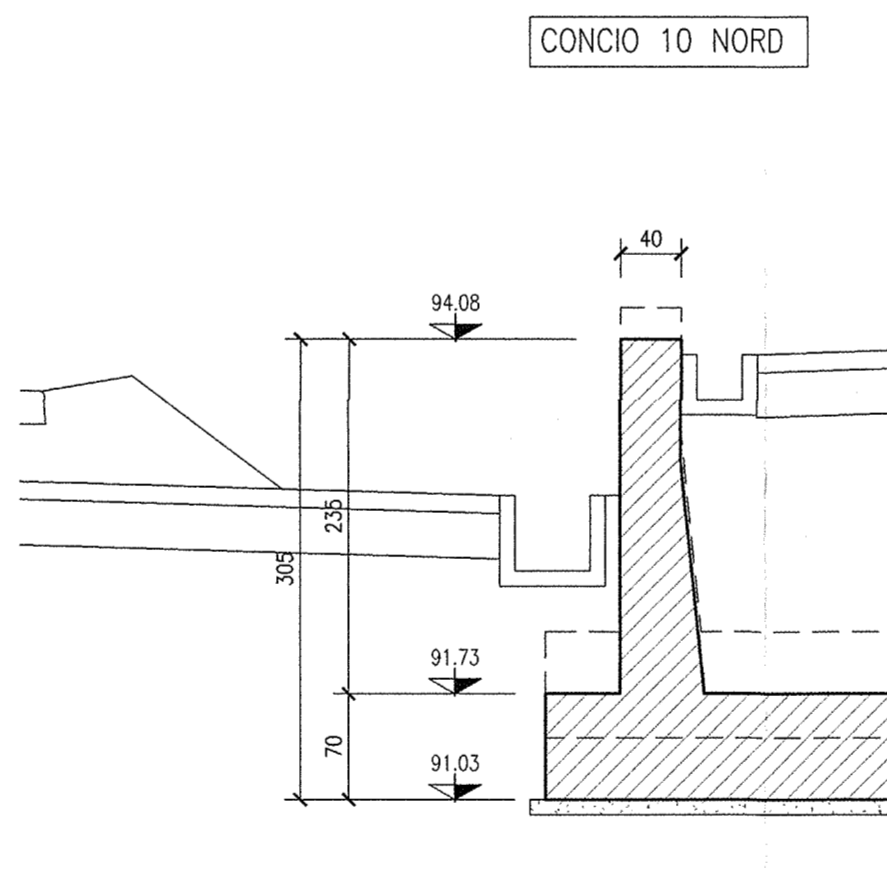
SEZIONE 7-7  
SCALA 1:50



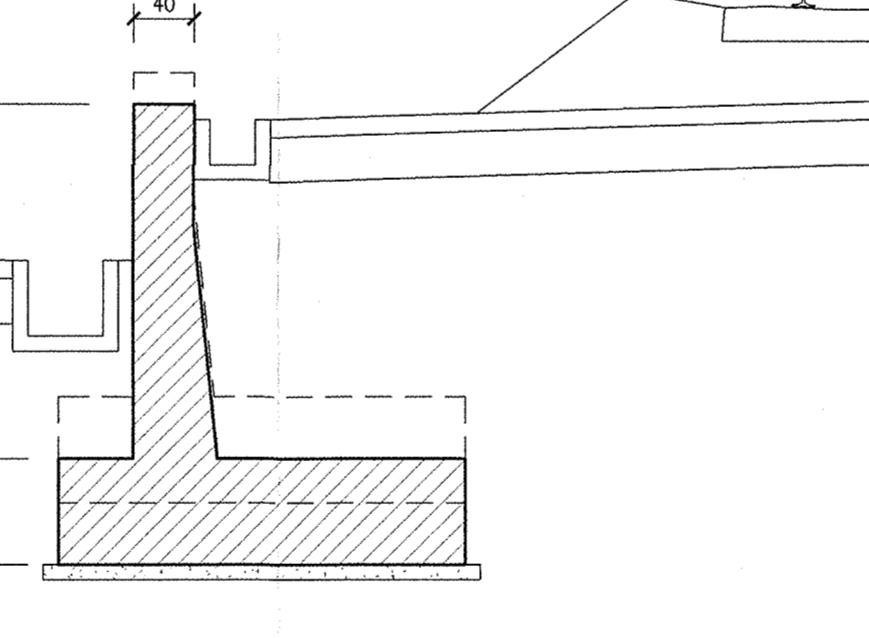
CONCIO 7 SUD



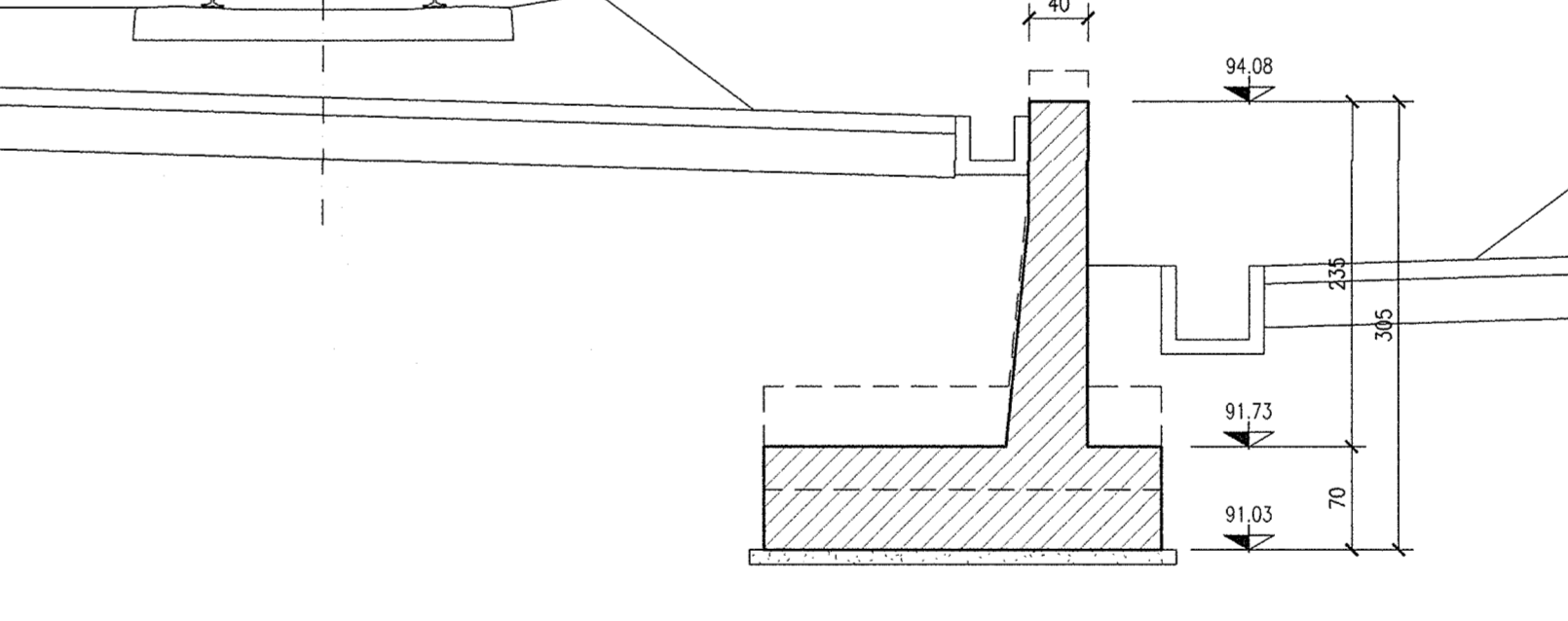
SEZIONE 8-8  
SCALA 1:50



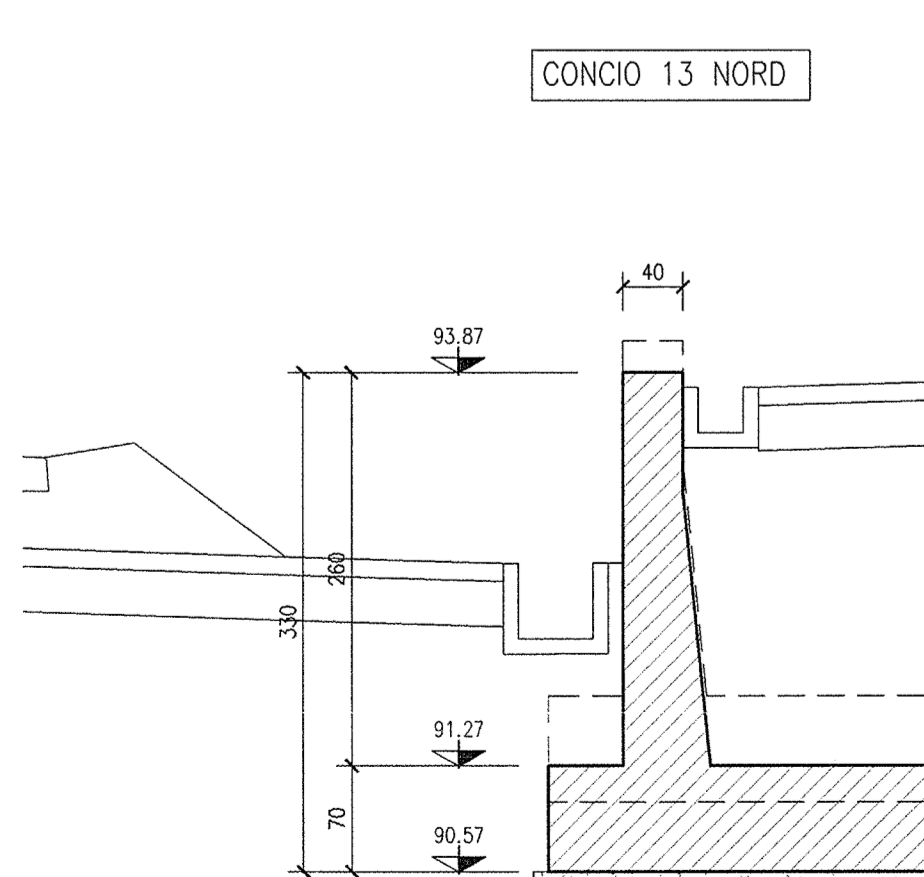
CONCIO 10 SUD



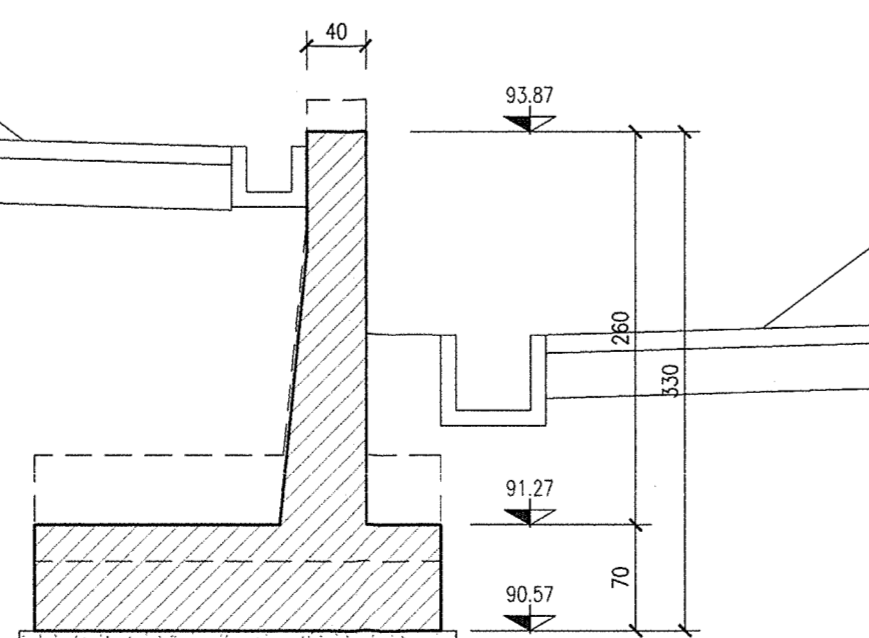
CONCIO 10 SUD



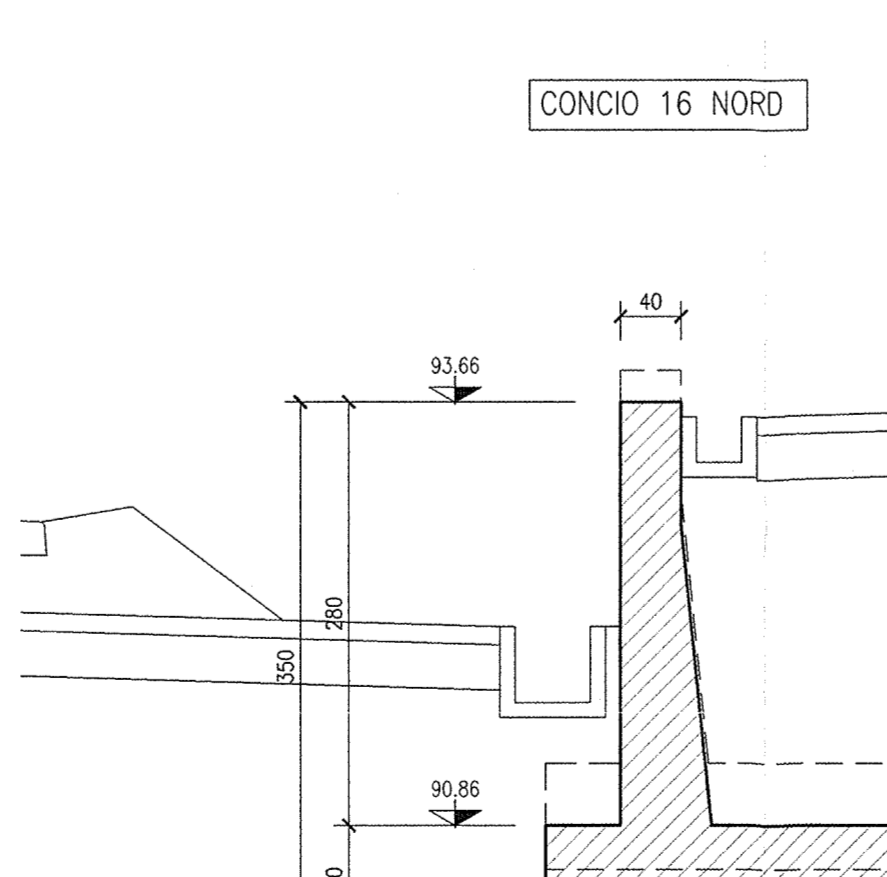
SEZIONE 9-9  
SCALA 1:50



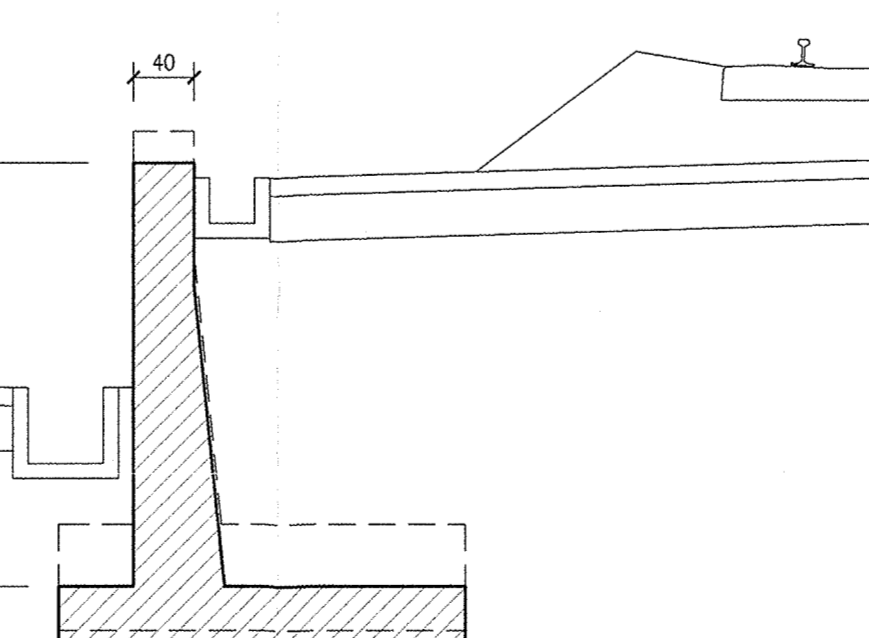
CONCIO 13 SUD



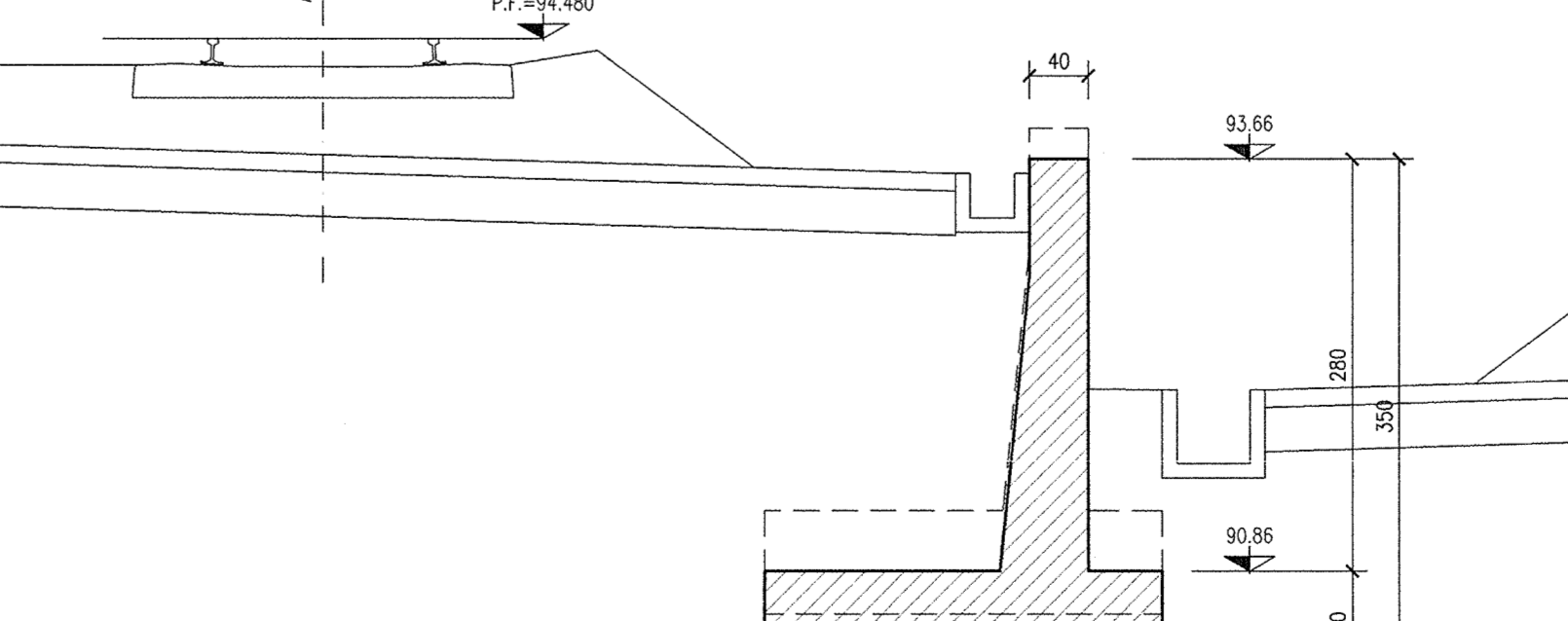
SEZIONE 10-10  
SCALA 1:50



CONCIO 16 SUD



CONCIO 16 SUD



DISegni DI RIFERIMENTO

DESCRIZIONE

Table with 2 columns: DESCRIZIONE and CODICE. Lists various technical drawings and their corresponding codes.

NOTE GENERALI

- TUTTE LE MISURE SONO ESPRESSE IN CENTIMETRI
- TUTTE LE QUOTE ALTIMETRICHE SONO ESPRESSE IN METRI s.l.m.
- TUTTI GLI ANGOLI SONO ESPRESSE IN GRADI DECIMALI
- TUTTE LE PROGRESSIVE SONO ESPRESSE IN CHILOMETRI
- TUTTE LE COORDINATE SONO ESPRESSE IN METRI
- LA QUOTA DELLA FALDA IDRICA DI PROGETTO È ASSUNTA PARI A 72,80 m

CARATTERISTICHE DEI MATERIALI

- PER LE CARATTERISTICHE DEI MATERIALI FARE RIFERIMENTO ALL'ELABORATO INOR11EE24TRIG100001

Logos for RFI (Rete Ferroviaria Italiana) and Gruppo Ferrovie dello Stato.

Logo for ALTA SOVRIGLIANZA and ITALFERR (Gruppo Ferrovie dello Stato).

Logo for GENERAL CONTRACTOR Cepav due, with text 'Consorzio ENI per l'Alta Velocità'.

INFRASTRUTTURE FERROVIARIE STRATEGICHE DEFINITE DALLA LEGGE OBIETTIVO N. 443/01

LINEA A.V./A.C. TORINO - VENEZIA Tratta MILANO - VERONA Lotto funzionale Brescia-Verona

PROGETTO ESECUTIVO RI61 - RILEVATO LINEA AC da Pk 148+399,891 a Pk 150+780,229 MURI DA Pk 148+843,940 A Pk 150+211,776

CARPENTERIA SEZIONI TRASVERSALI - TAV.1

Table with columns: COMMITTENTE, GENERAL CONTRACTOR, DIRETTORE LAVORI, and SCALE. Includes logos for Cepav due and RFI.

Table with columns: COMMESSA, LOTTO, FASE, ENTE, TIPO DOC, OPERA/DISCIPLINA, PROG., REV. Includes logos for INOR and RFI.

Table with columns: Rev., Descrizione, Aut., Data, Verifica, Data, Data. Includes logos for RFI and other project-related entities.