

SEZIONE LONGITUDINALE "B"

scala 1:50

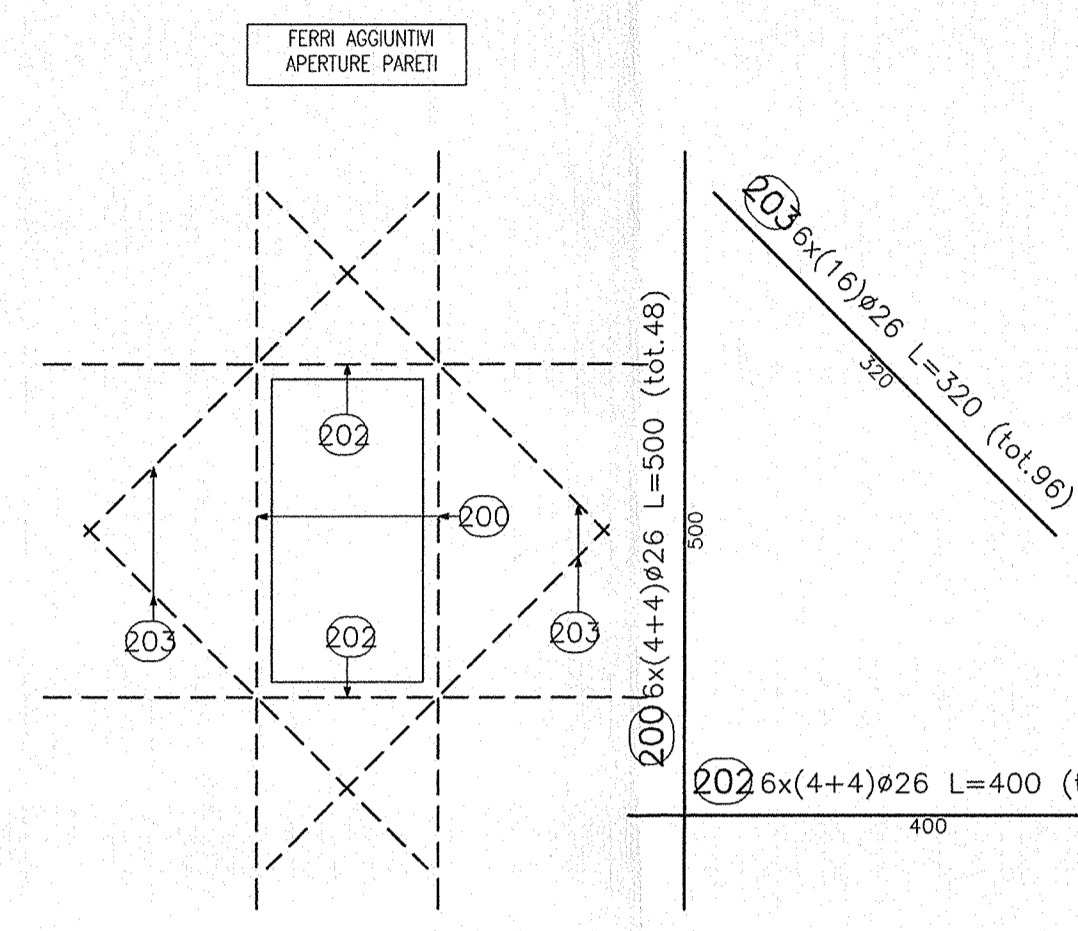
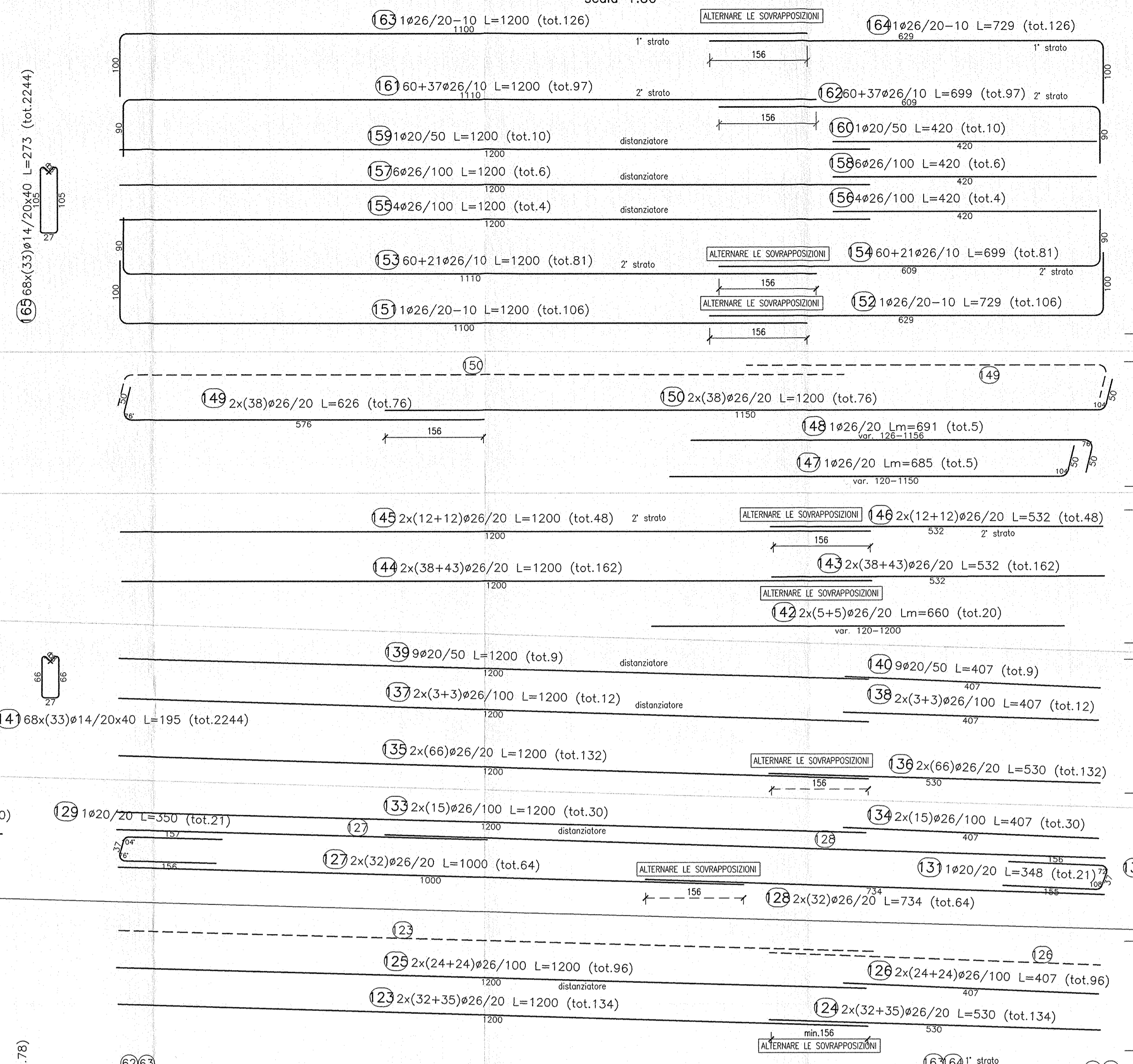
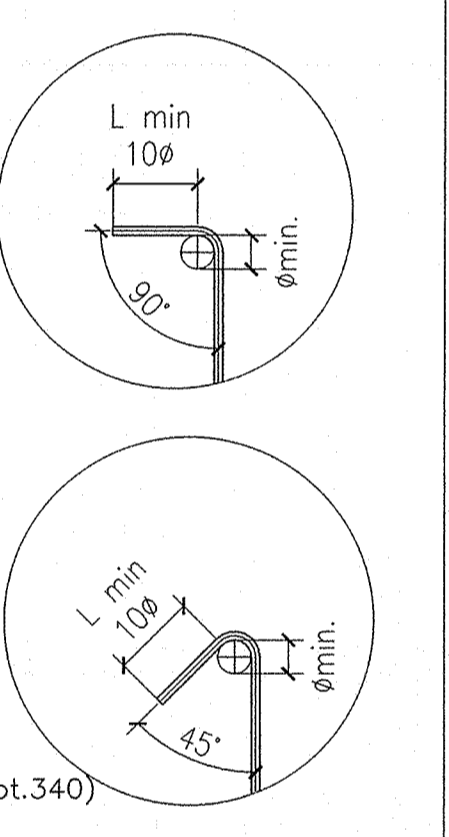


TABELLA DIAMETRI AMMISSIBILI DEI MANDRINI PER LE BARRE PIEGATE

Table with 2 columns: POS. N° and DIAMETRO MINIMO DI PIEGATURA. Lists bar positions and their corresponding minimum bending diameters.

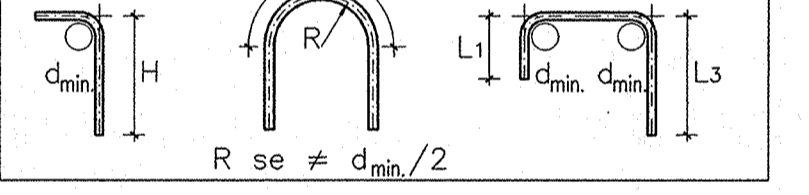
PARTICOLARE PIEGATURE STAFFE



NOTE GENERALI

- General notes in Italian regarding measurement units, bending diameters, and reinforcement details.

Legenda misure:



CARATTERISTICHE DEI MATERIALI

PER LE CARATTERISTICHE DEI MATERIALI FARE RIFERIMENTO ALL'ELABORATO INOR11EE24TSL000001

Logos and branding for RFI (Rete Ferroviaria Italiana), Gruppo Ferrovie dello Stato, and ALTA SOVRIGLIANZA.

Logo and name of the general contractor: Cepak due.

INFRASTRUTTURE FERROVIARIE STRATEGICHE DEFINITE DALLA LEGGE OBBIETTIVO N. 443/01

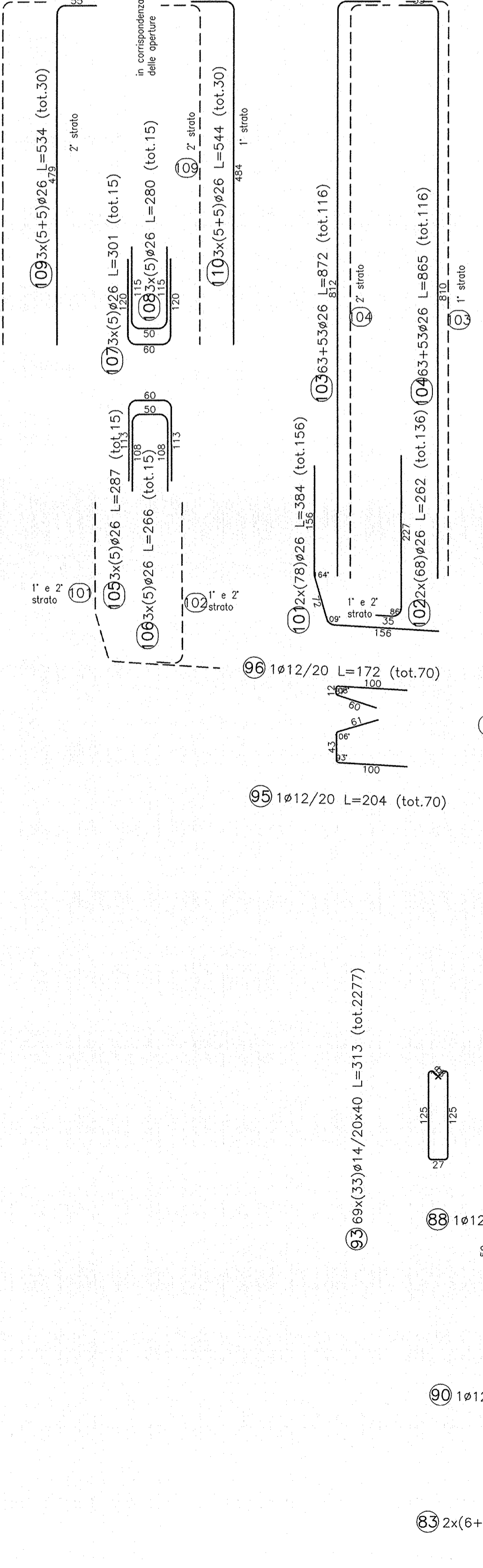
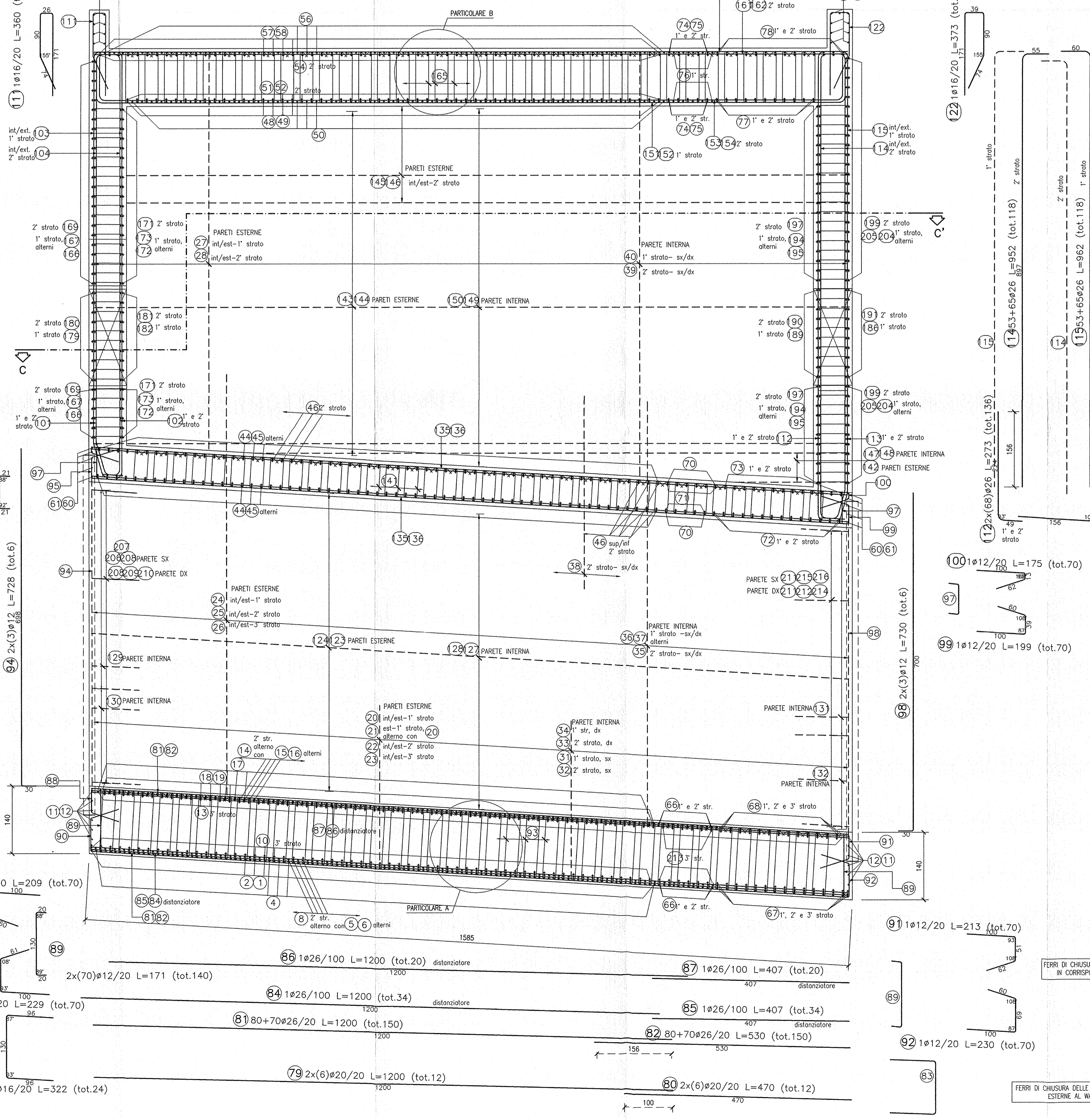
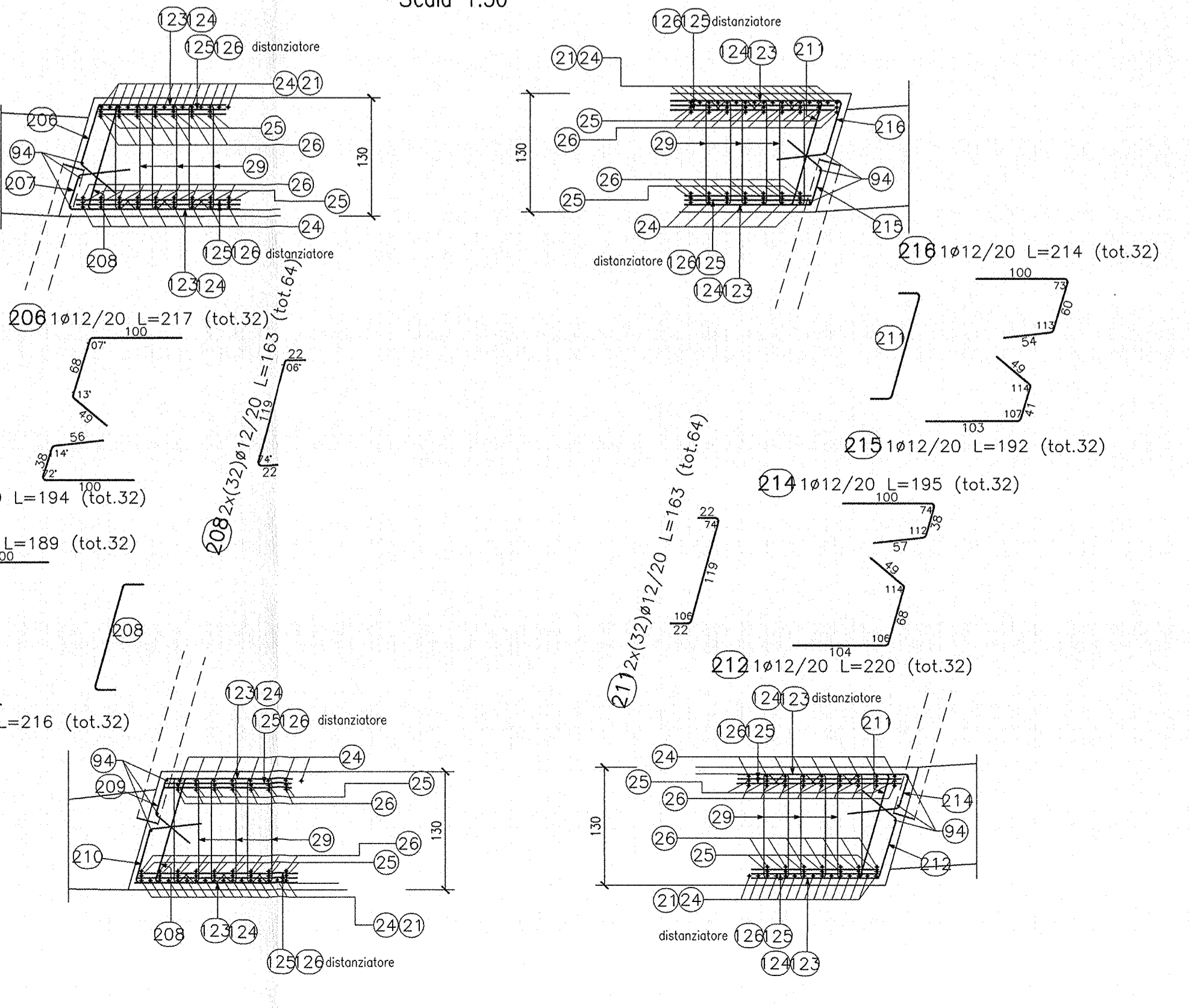
LINEA A.V. I.A.C. TORINO - VENEZIA Tratta MILANO - VERONA Lotto funzionale Brescia-Verona

Table with project details: COMMITTEE, GENERAL CONTRACTOR, DATE, COMMISSION, LOTTO, PHASE, ENTITY, TYPE OF DOCUMENT, OPERA/DISCIPLINA, PROG., REV.

Project approval and signature blocks, including stamps and dates.

PARTICOLARE WATER-STOP MURO

Scala 1:50



FERRI DI CHIUSURA DELLE BAREE LONGITUDINALI IN CORRESPONDENZA DEL WATER-STOP

FERRI DI CHIUSURA DELLE BAREE LONGITUDINALI ESTERNE AL WATER STOP