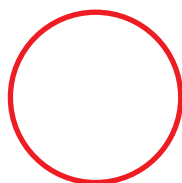
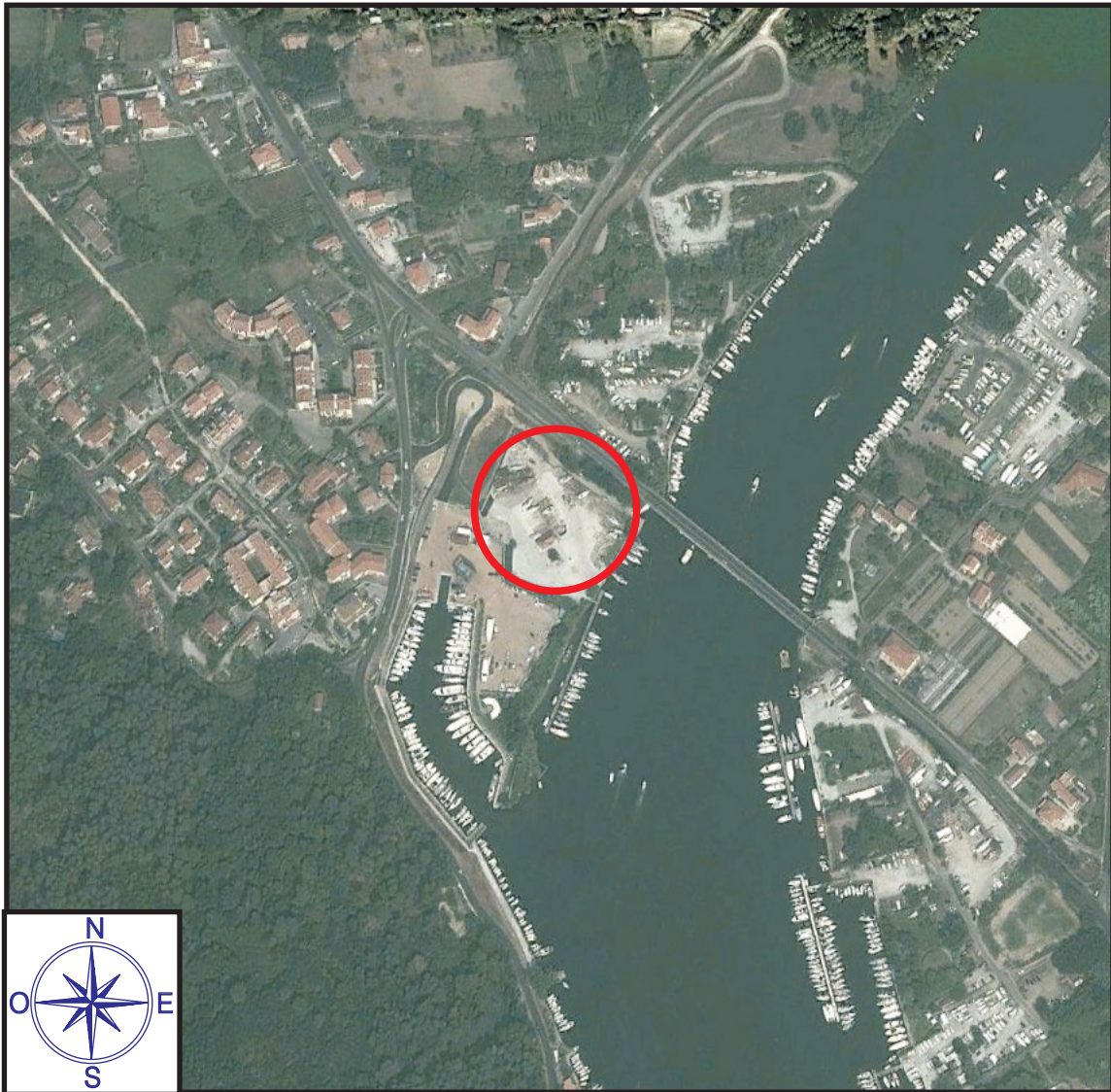


Legenda

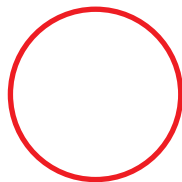


Comune di Ameglia
Località Fiumaretta

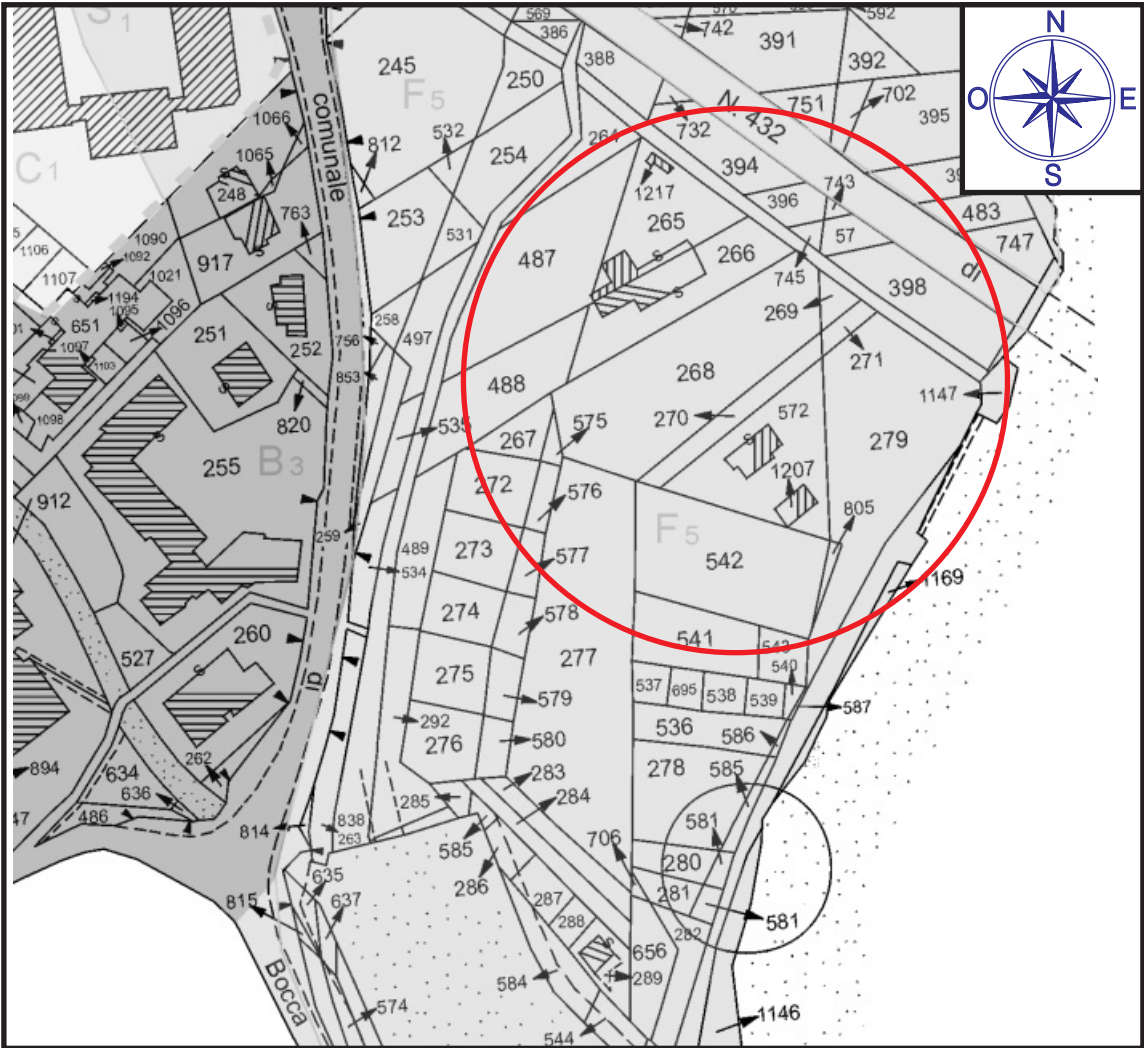
Scala 1:25000



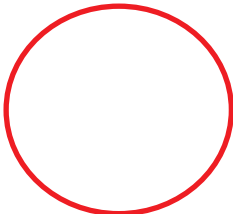
Legenda



Comune di Ameglia
Località Fiumaretta



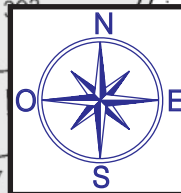
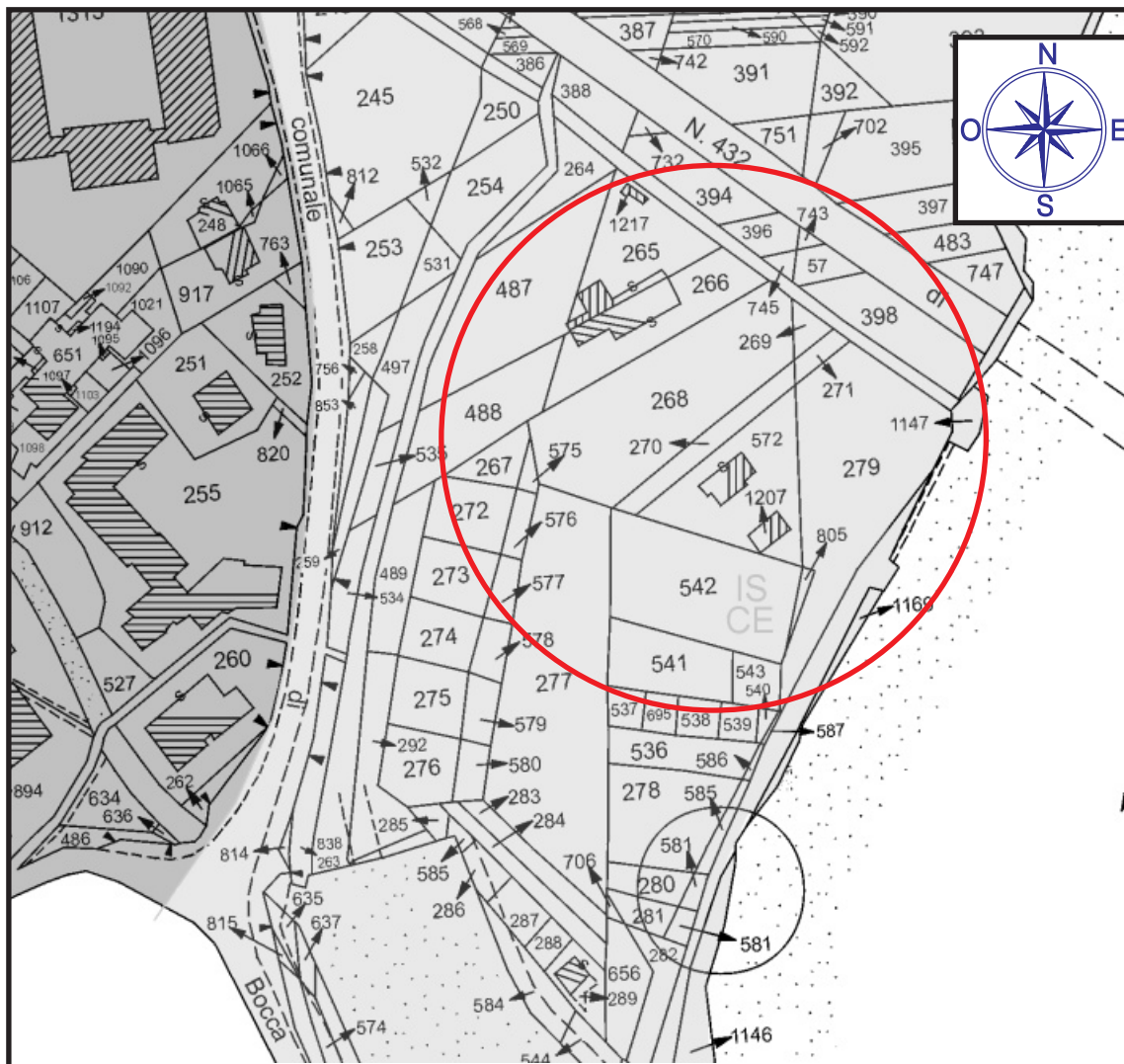
Legenda



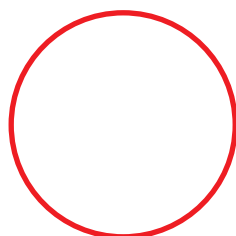
Area in esame
Comune di Ameglia

Scala 1:2000

STRALCIO DEL P.T.C.P.

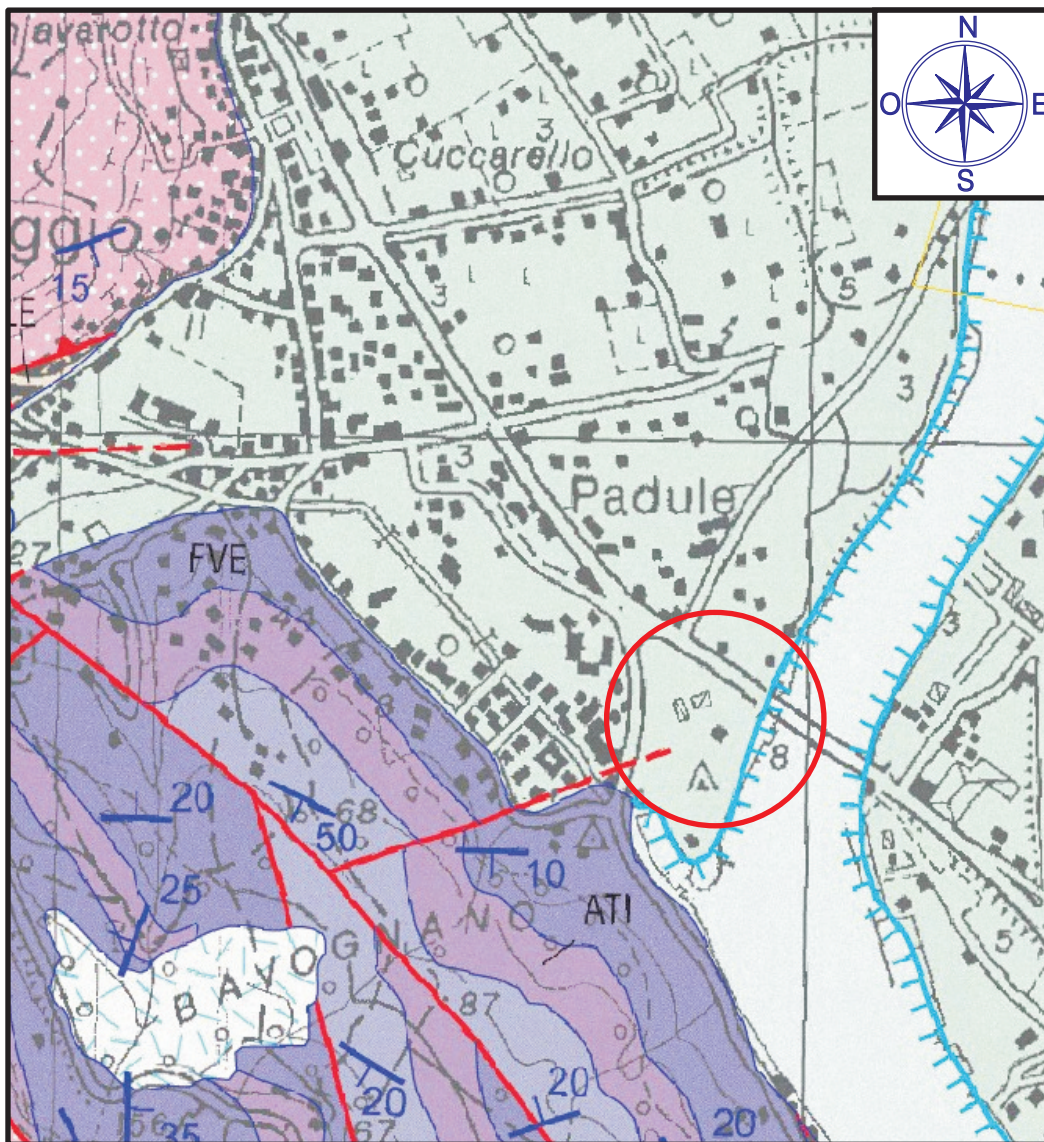


Legenda



Area in esame
Comune di Ameglia

Scala 1:2000




Legenda

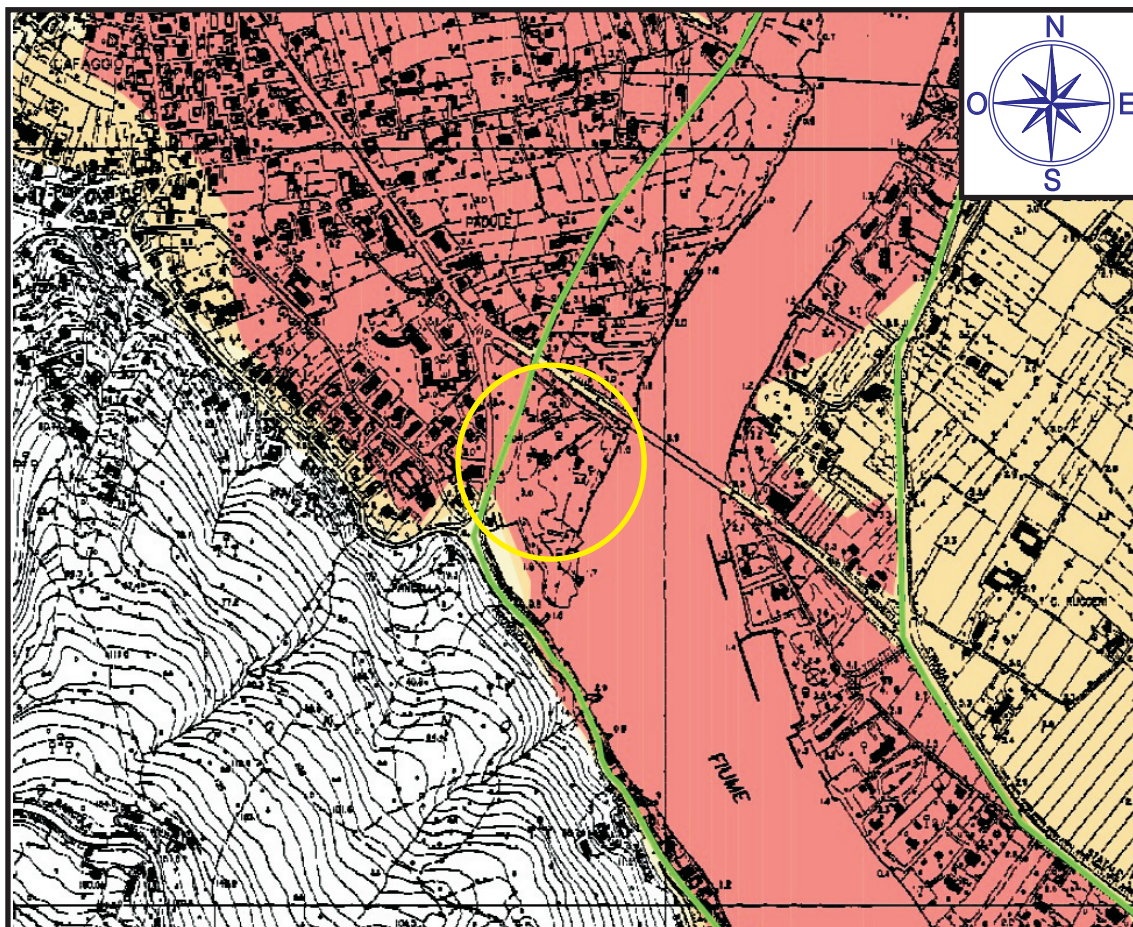
 Depositi alluvionali

 Orlo di terrazzi



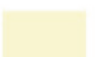





 Giacitura degli strati

 Area d'indagine

SCALA 1 : 10.000



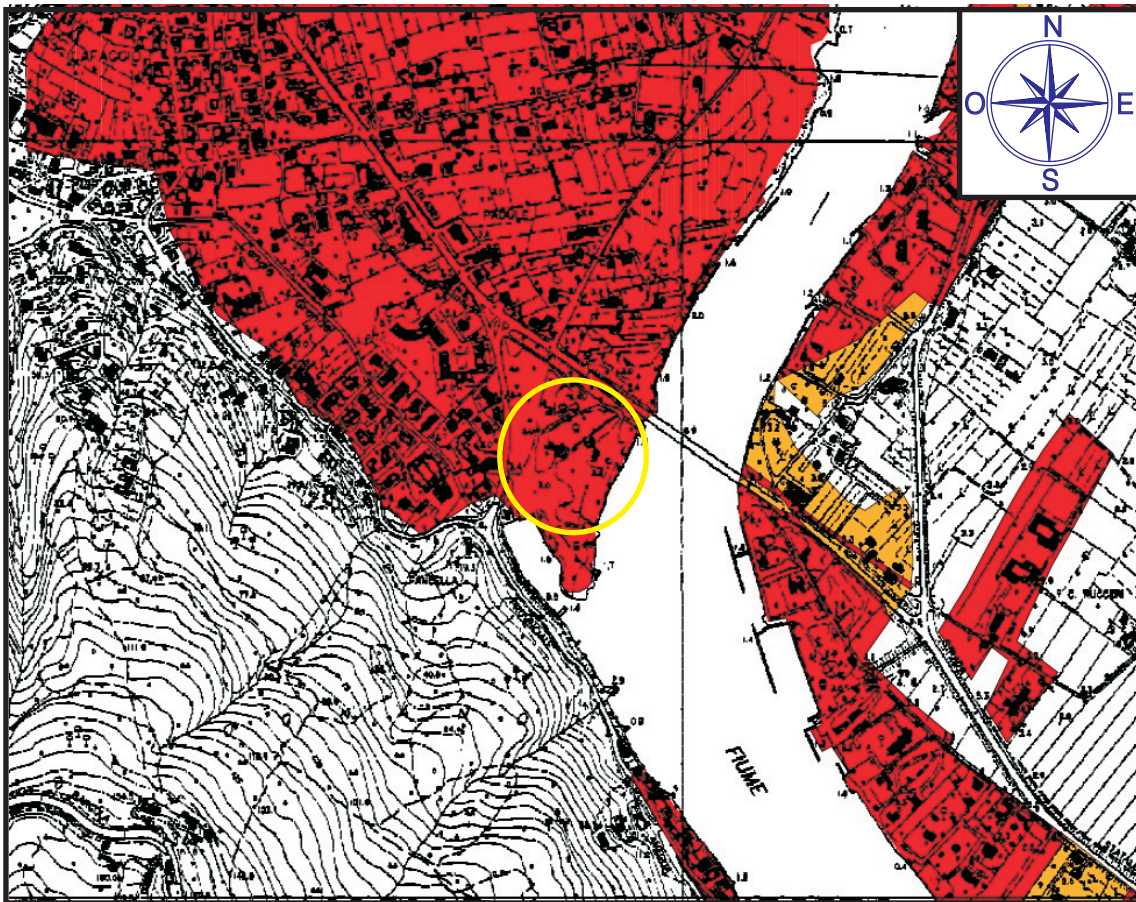
Legenda

-  Aree a pericolosità idraulica molto elevata - elevata
(aree inondabili con $T_r=30$ anni)
 -  Aree a pericolosità idraulica media
(aree inondabili con $T_r=200$ anni)
 -  Aree a pericolosità idraulica bassa
(aree inondabili con $T_r=500$ anni)
 -  Aree a pericolosità idraulica bassa
(aree difese da interventi di sistemazione idraulica)
 -  Aree a criticità idraulica non studiate
(aree storicamente inondate)
 -  Fascia di Riassetto Fluviale
 -  Zone di approfondimento
(zone in cui si rendono necessari studi di maggior dettaglio)
-  Area di indagine

Scala 1 : 10.000

**STRALCIO DELLA CARTA DEL RISCHIO IDRAULICO
AUTORITA' DI BACINO DEL FIUME MAGRA**

TAV. 7



Legenda



Limite di Bacino



Rischio idraulico molto elevato (RI4)

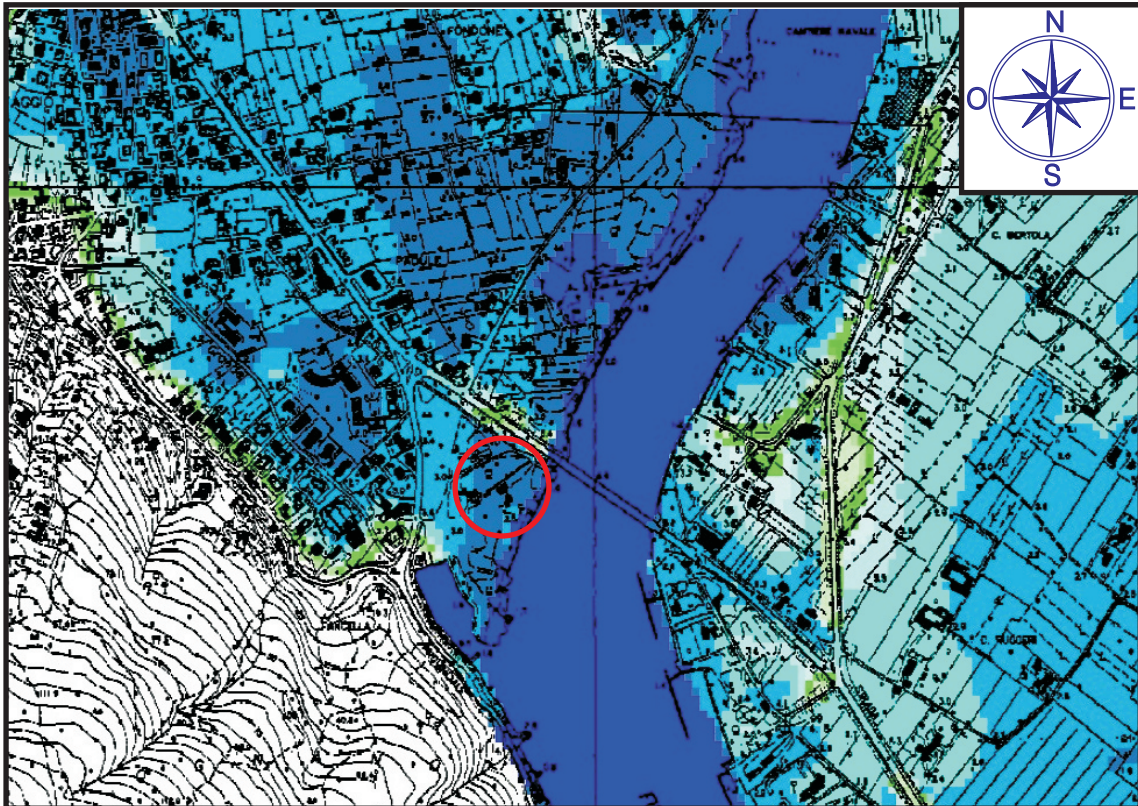


Rischio idraulico elevato (RI3)


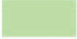





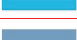




Area di indagine

Scala 1 : 10.000



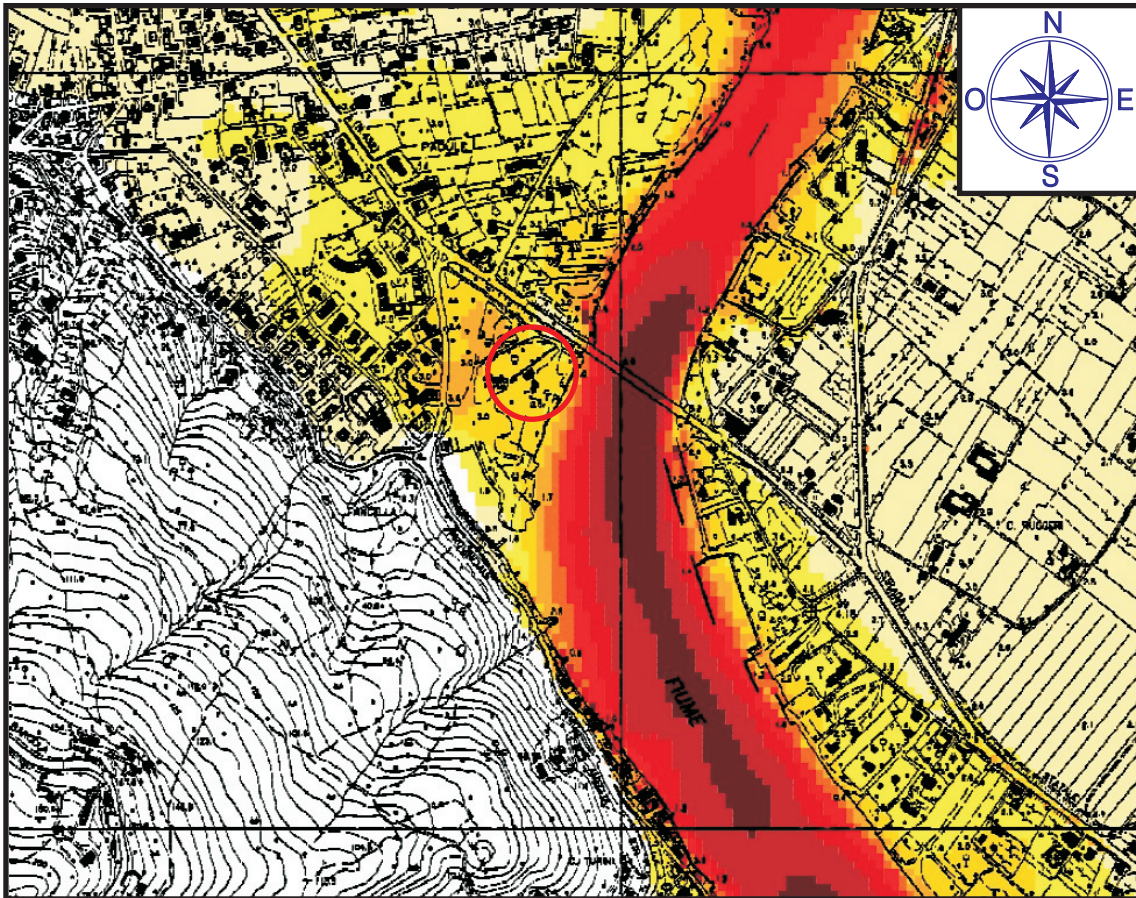
Legenda

-  battente idrico inferiore a 0.40 m
-  battente idrico compreso tra 0.41 m e 0.60 m
-  battente idrico compreso tra 0.61 m e 0.80 m
-  battente idrico compreso tra 0.81 m e 1.00 m
-  battente idrico compreso tra 1.01 m e 1.20 m
-  battente idrico compreso tra 1.21 m e 1.50 m
-  battente idrico compreso tra 1.51 m e 2.00 m
-  battente idrico compreso tra 2.01 m e 3.00 m
-  battente idrico compreso tra 3.01 m e 4.00 m
-  battente idrico superiore a 4.00 m













Area di indagine

Scala 1 : 10.000

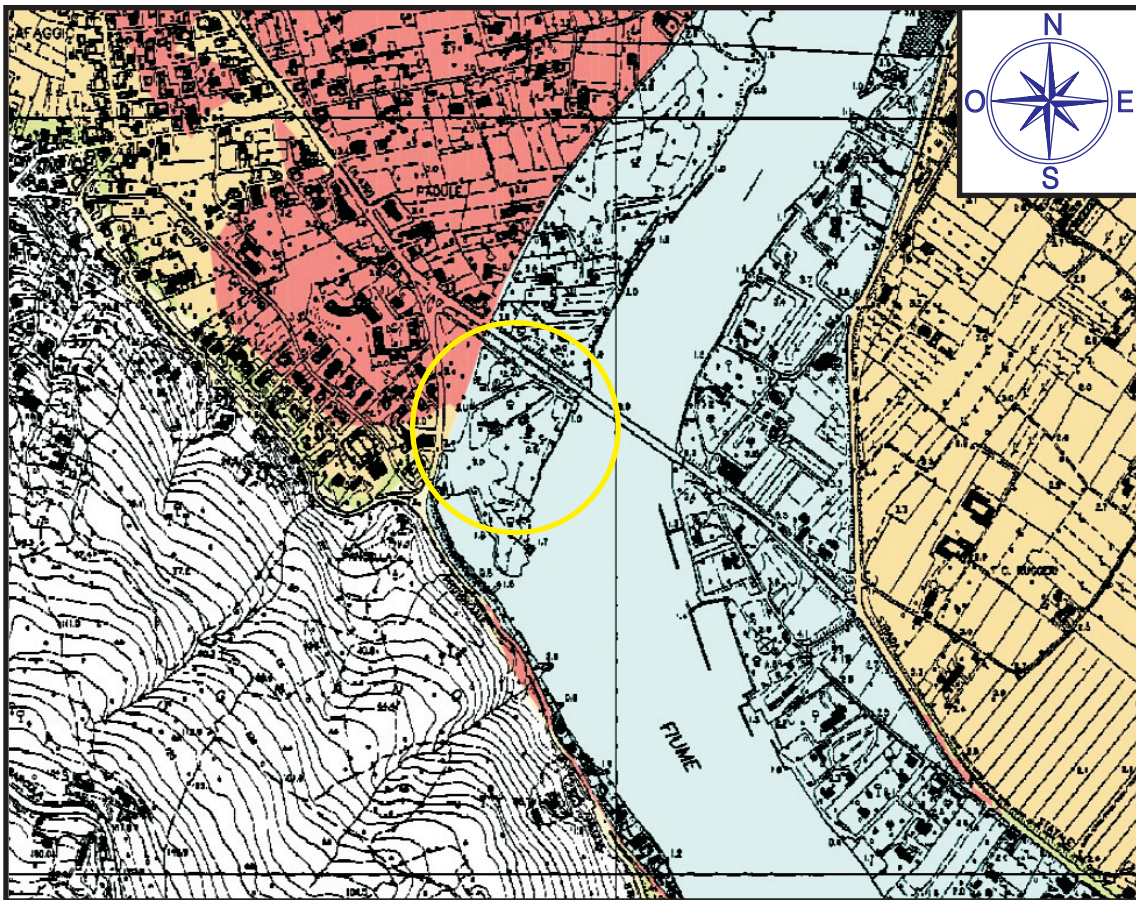


Legenda

-  velocità della corrente inferiore a 0.50 m/s
-  velocità della corrente compresa tra 0.50 m/s e 1.00 m/s
-  velocità della corrente compresa tra 1.00 m/s e 1.50 m/s
-  velocità della corrente compresa tra 1.50 m/s e 2.00 m/s
-  velocità della corrente compresa tra 2.00 m/s e 2.50 m/s
-  velocità della corrente compresa tra 2.50 m/s e 3.00 m/s
-  velocità della corrente compresa tra 3.00 m/s e 3.50 m/s
-  velocità della corrente compresa tra 3.50 m/s e 4.00 m/s
-  velocità della corrente superiore a 4.00 m/s

 Area di indagine

Scala 1 : 10.000



Legenda



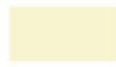
ambito PI4A - Aree inondabili per T=30 anni
a maggiore pericolosità relativa



ambito PI3A - Aree inondabili per T=200 anni
a maggiore pericolosità relativa



ambito PI3B - Aree inondabili per T=200 anni
a minore pericolosità relativa



ambito PI2 - Aree inondabili per T=500 anni



Fascia di Riassetto Fluviale



Area di indagine

Scala 1 : 10.000