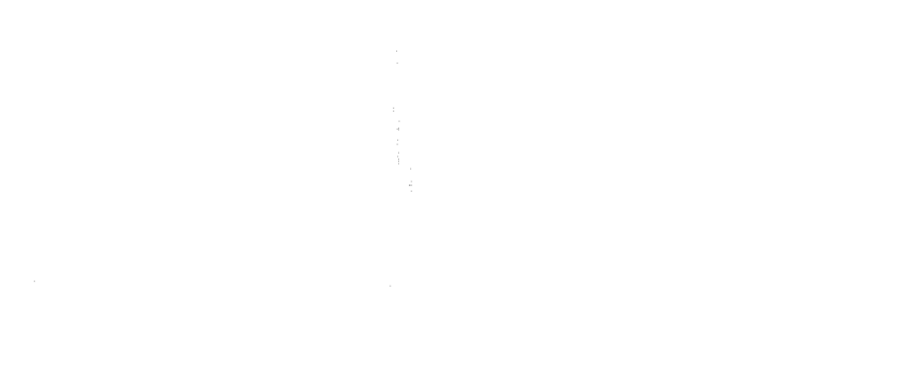
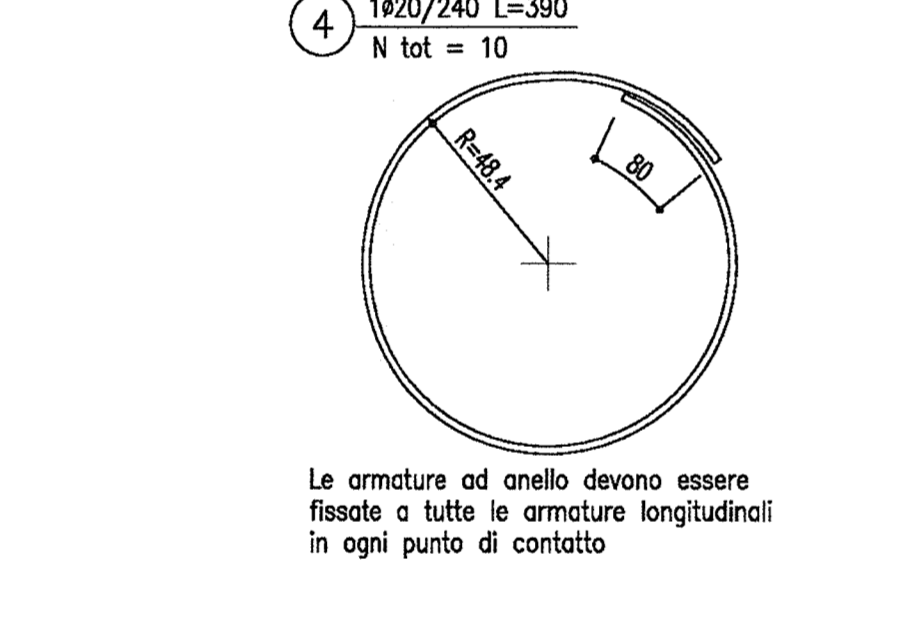
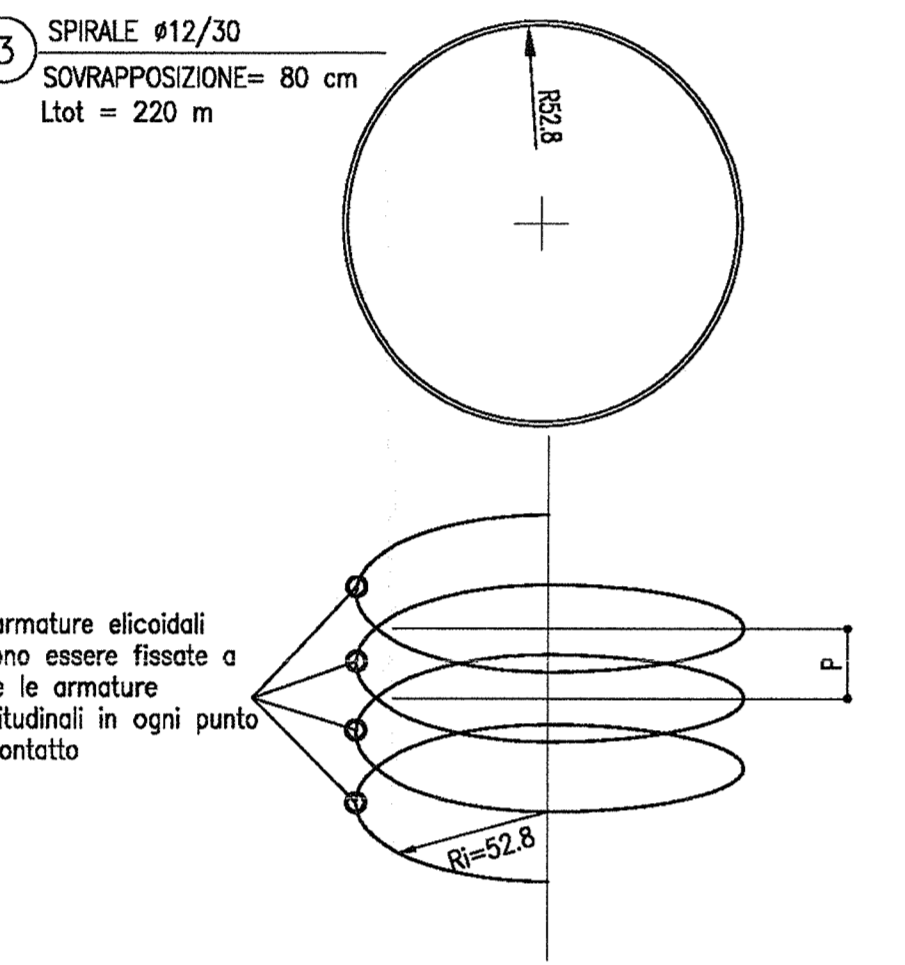
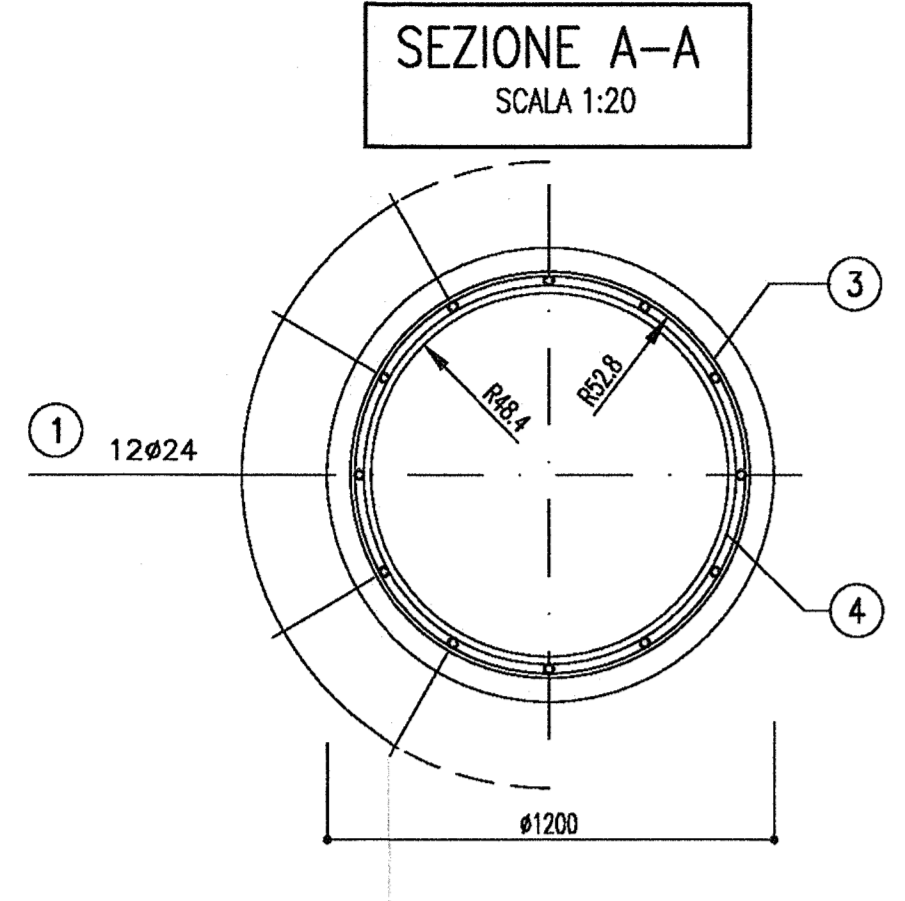
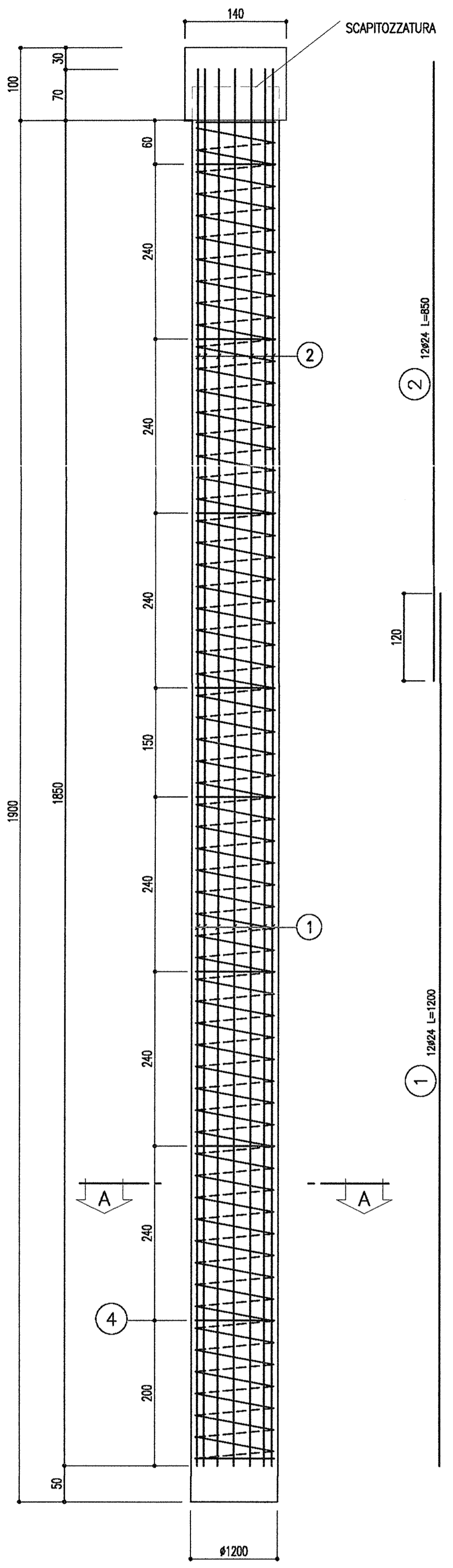
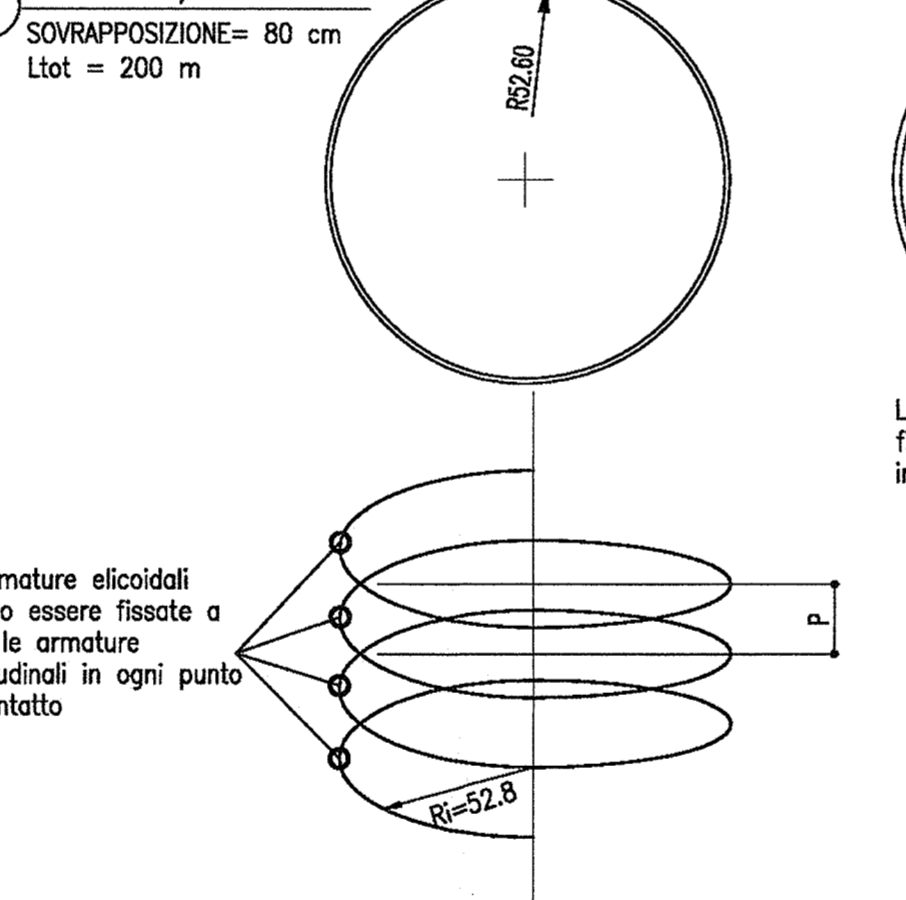
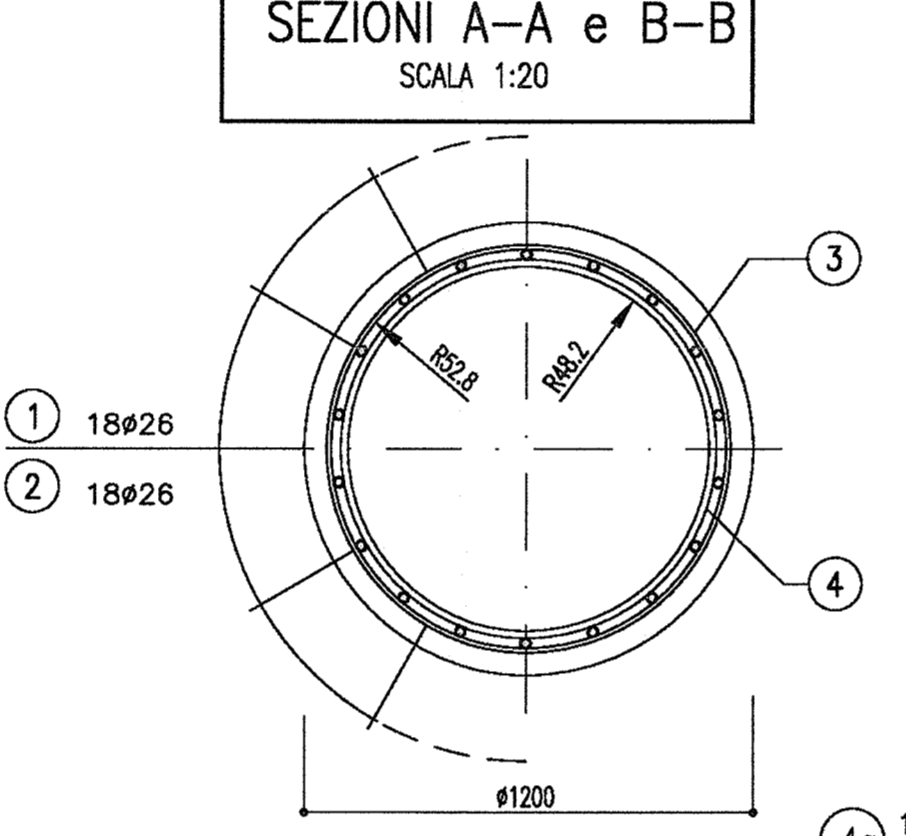
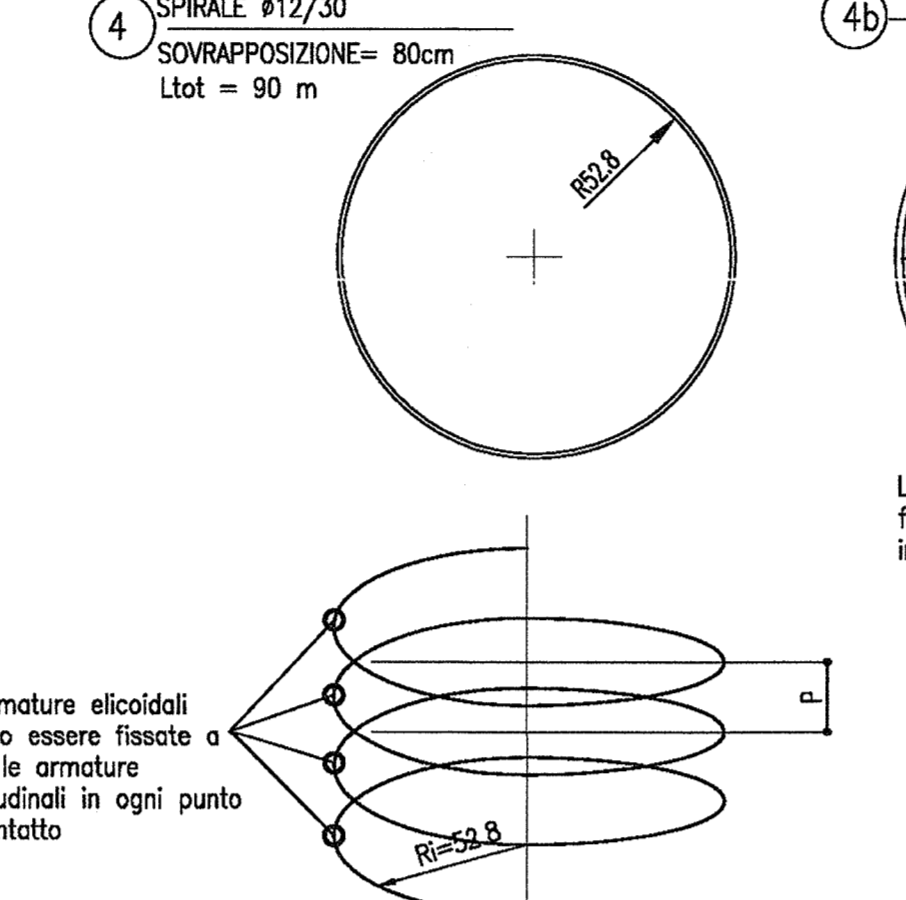
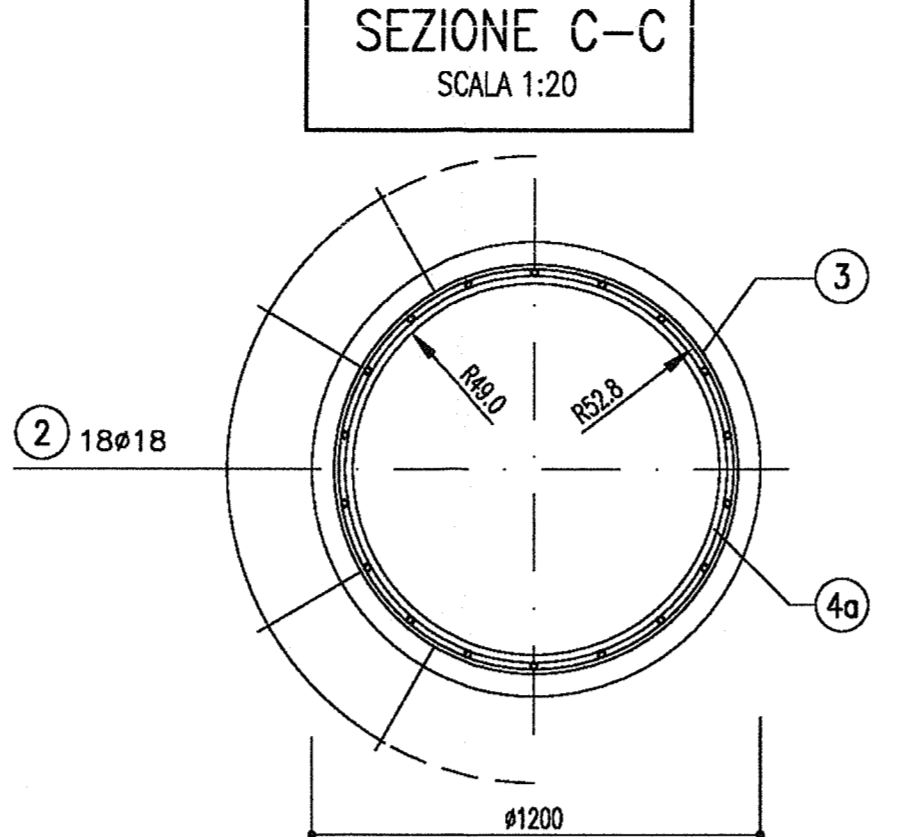
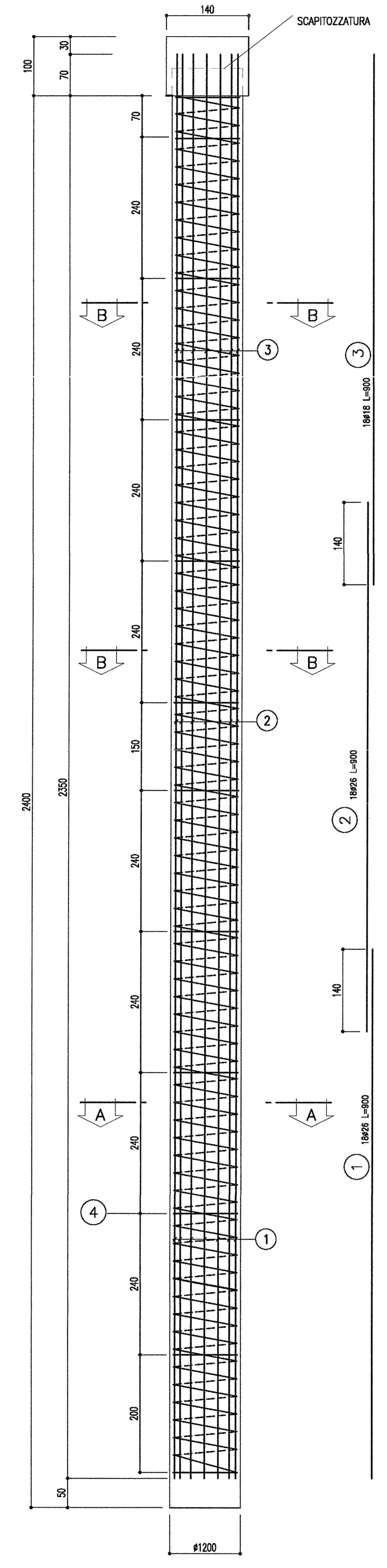


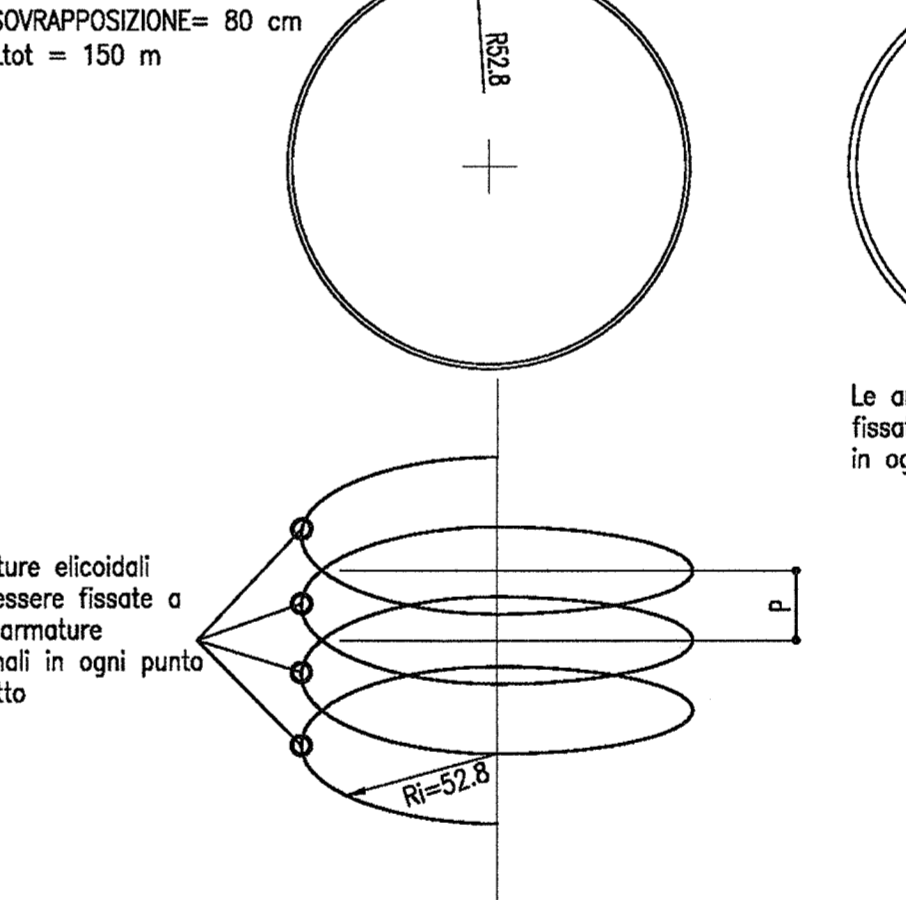
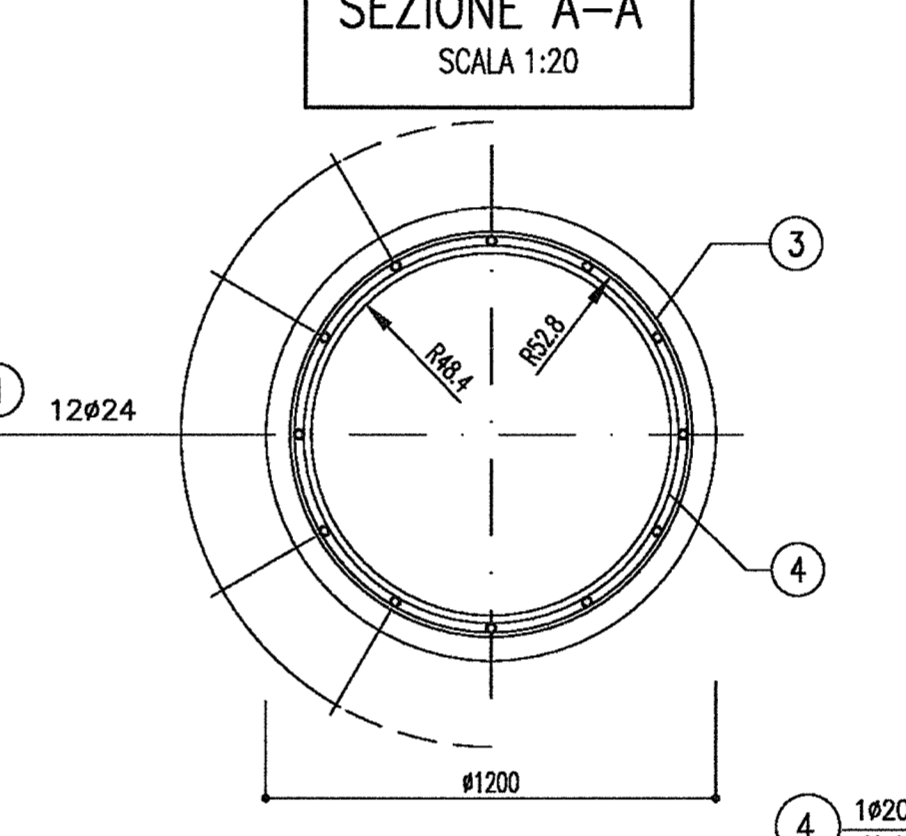
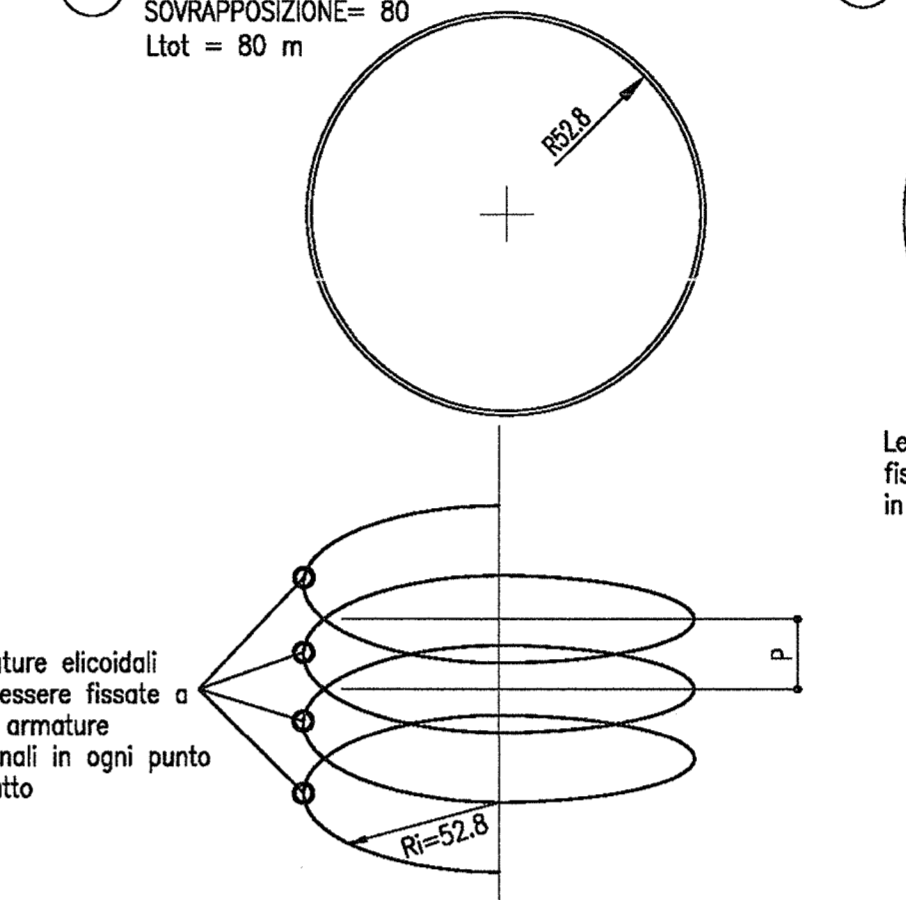
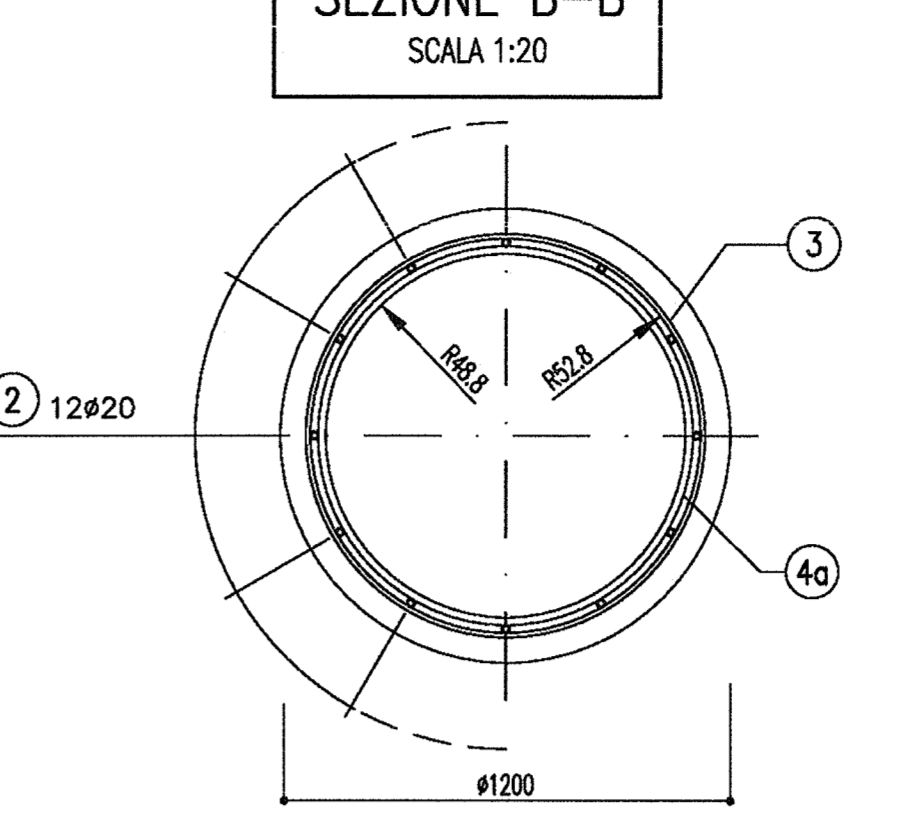
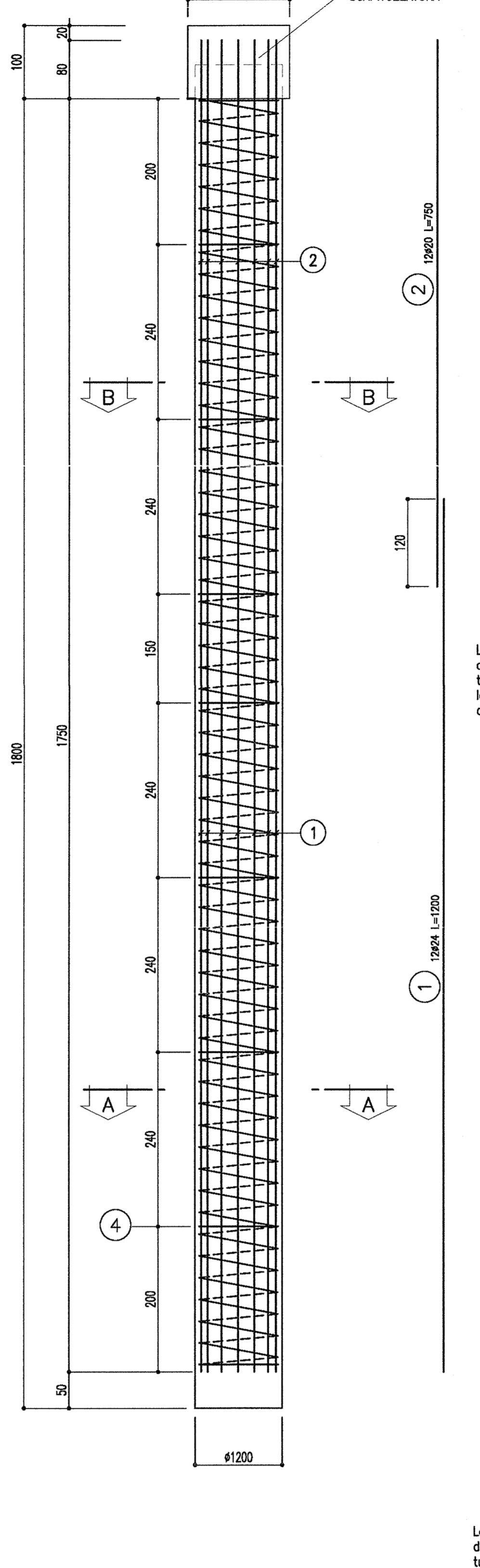
ARMATURA PALO Ø1200 - L=19.00m
TRATTA L2
SCALA 1:50



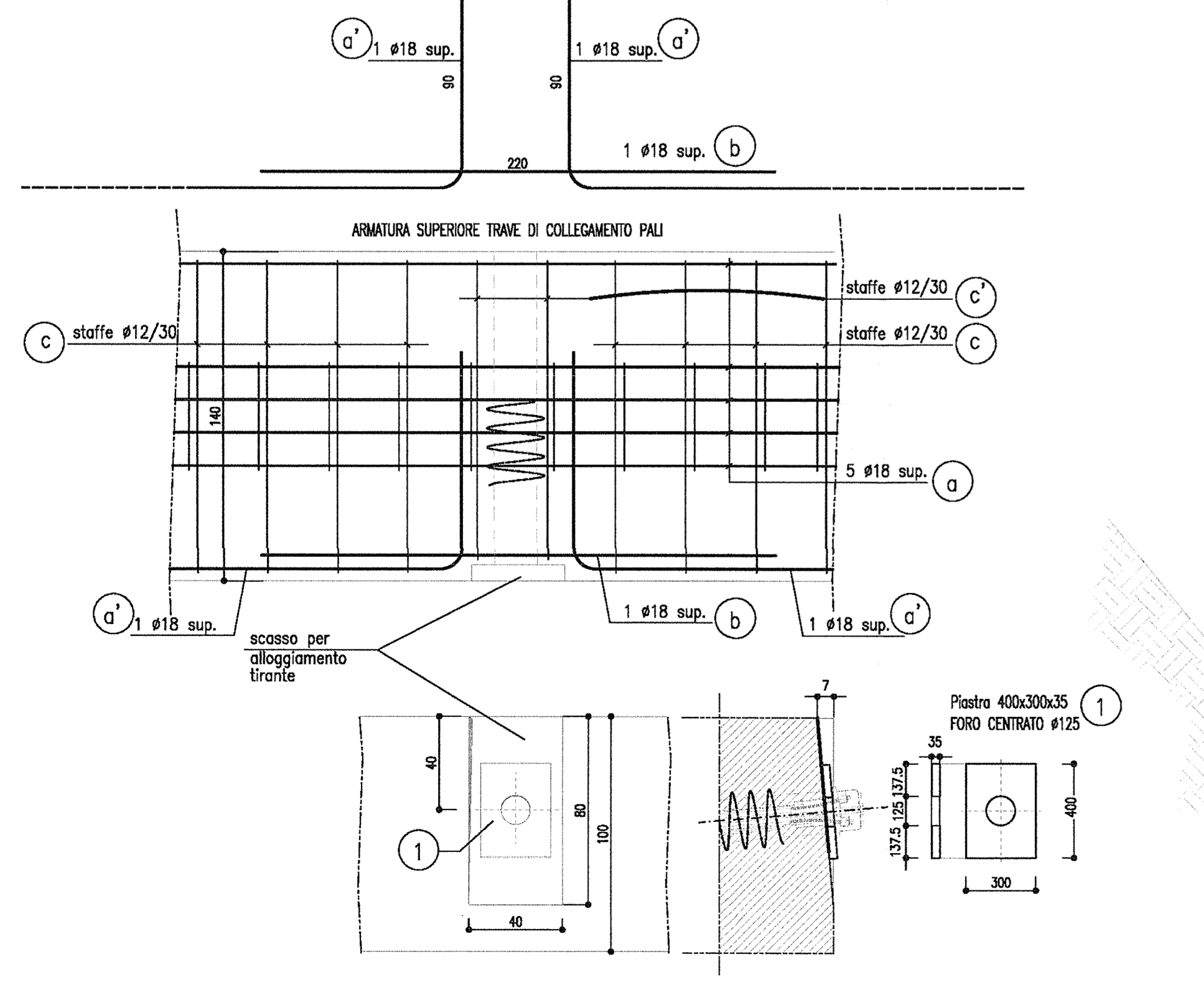
ARMATURA PALO Ø1200 - L=24.00m
TRATTE M1, B, I1
SCALA 1:50



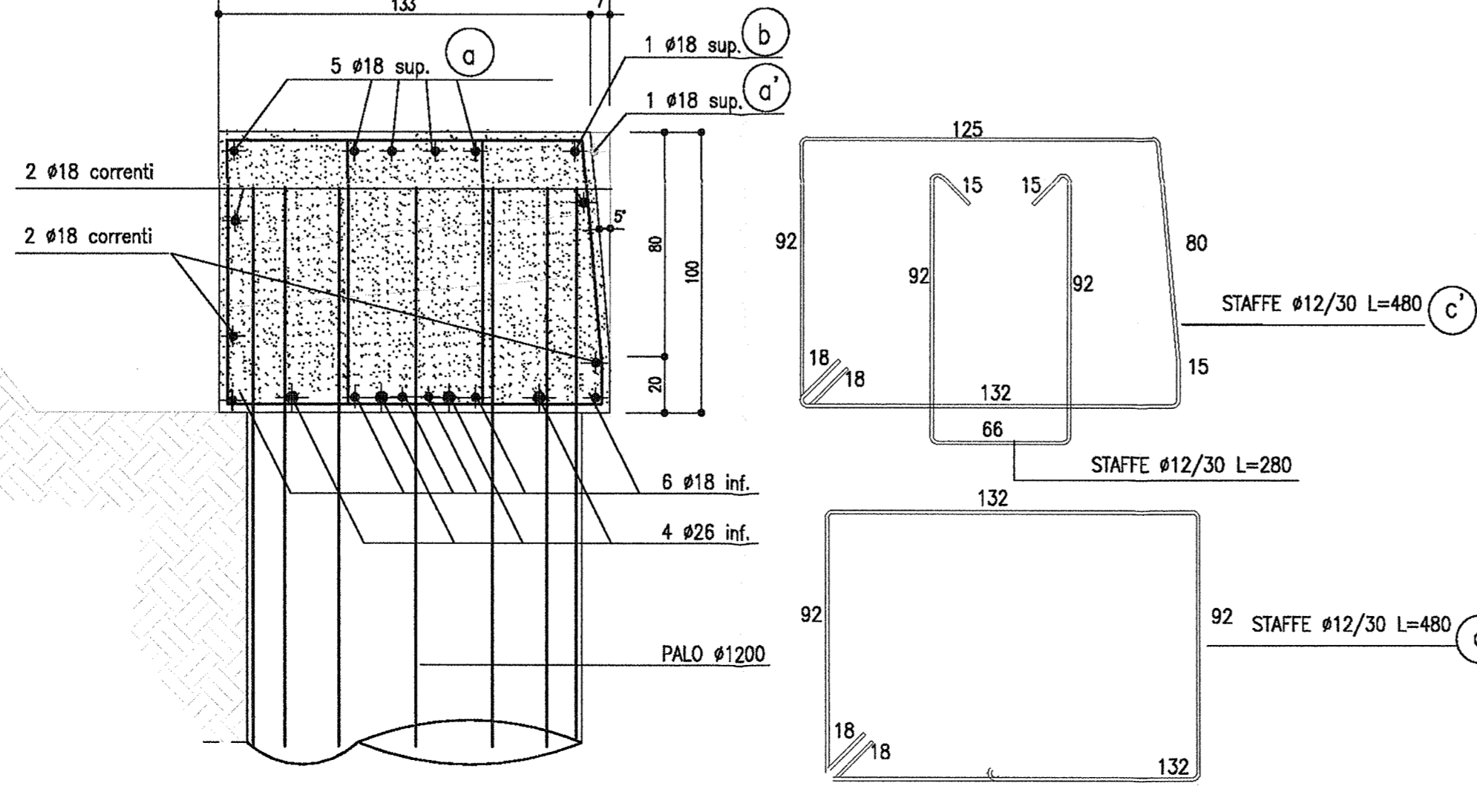
ARMATURA PALO Ø1200 - L=18.00m
TRATTA C
SCALA 1:50



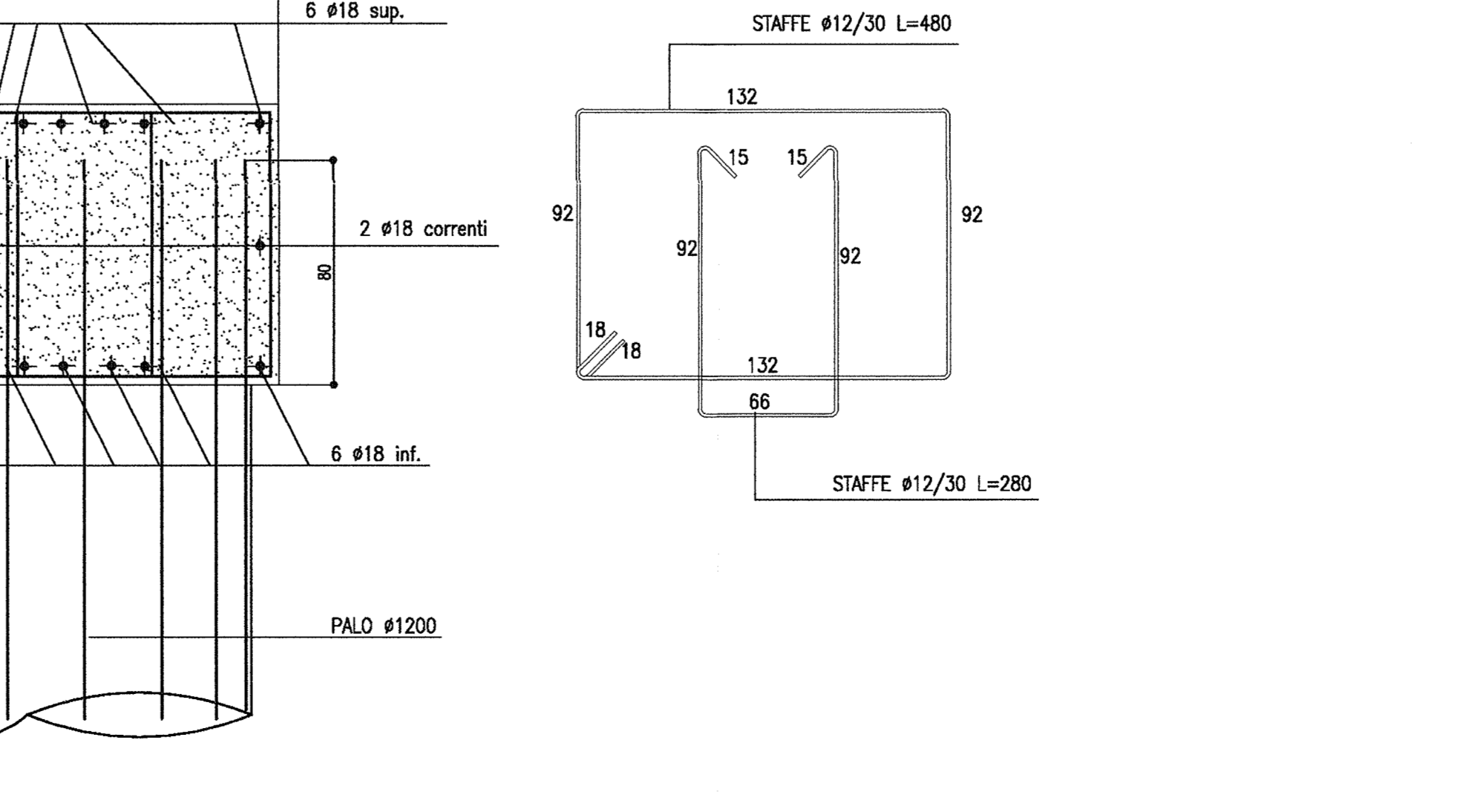
PARTICOLARE ANCORAGGIO TIRANTE
SCALA 1:20



PARATIE DI TESTA
ARMATURA TRAVE DI COLLEGAMENTO PALI
SCALA 1:20



PARATIE LATERALI
ARMATURA TRAVE DI COLLEGAMENTO PALI
SCALA 1:20

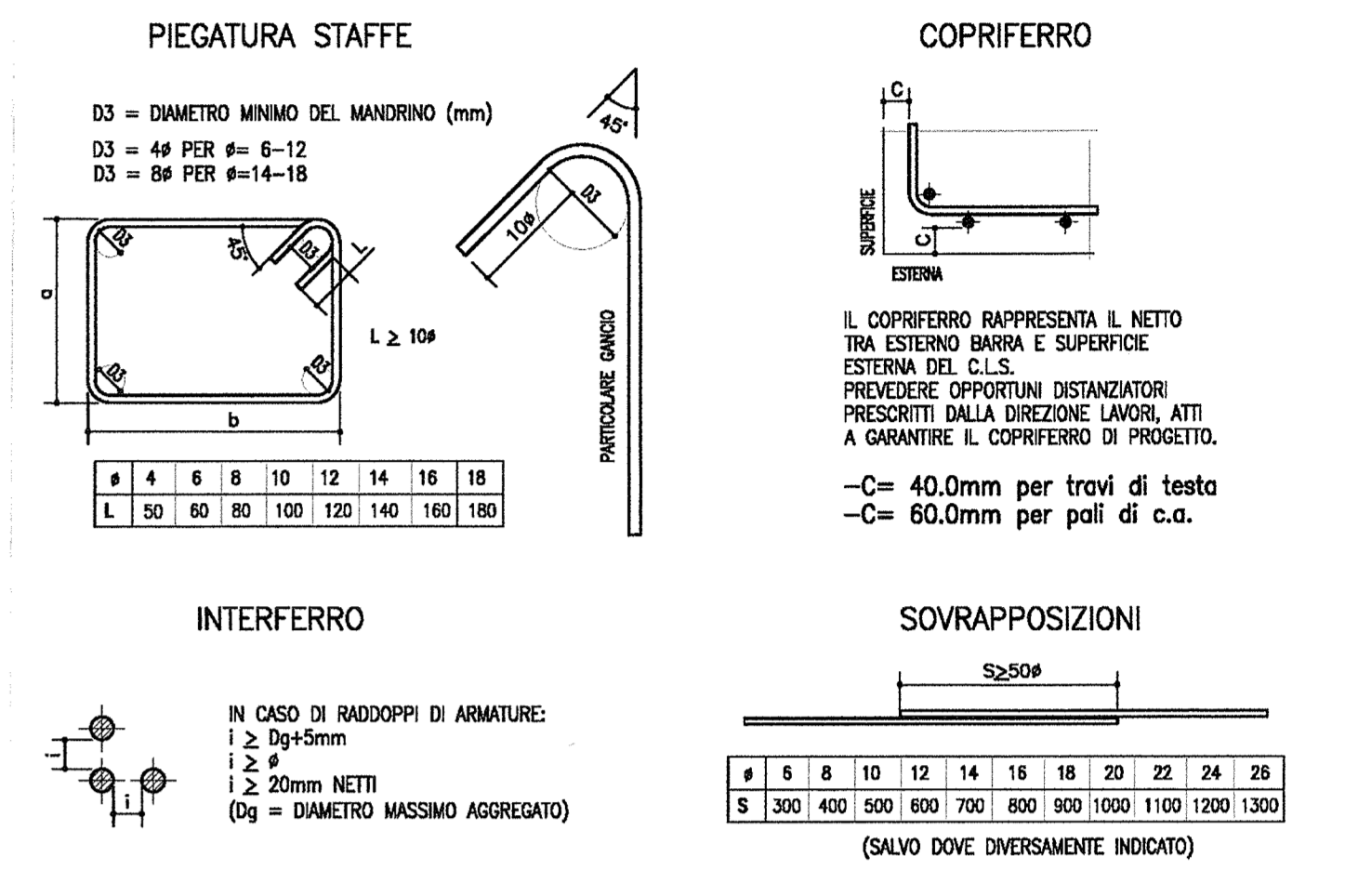


DISEGNI DI RIFERIMENTO

| DESCRIZIONE | CODICE |
|--|---------------------|
| G05 - Sviluppata paratie di imbocco tratte A, B, C | INOR11EE2P9G0500003 |
| G05 - Sviluppata paratie di imbocco tratte M, L, I, II | INOR11EE2P9G0500004 |
| G05 - Tabelle materiali | INOR11EE24TG0500001 |

NOTE
- EVENTUALI DIFFERENZE TRA LE MISURE TOTALI E LE SOMMATORIE DELLE MISURE PARZIALI SONO DOVUTE AGLI ARROTONDAMENTI AUTOMATICI DI AUTOCAD.

SPECIFICHE PIEGATURA E POSA FERRI



I FERRI RIPORTATI NEL PRESENTE ELABORATO SONO RAPPRESENTATI A MENO DEGLI SMUSSATI DI PIEGATURA CON IL MANDRINO. LE MISURE PARZIALI RIPORTATE SONO RELATIVE ALLA SPEZZATA A SPICOLI VIVI.

COMMITTENTE:
RFI
RETE FERROVIARIA ITALIANA
GRUPPO FERROVIE DELLO STATO

ALTA Sorveglianza:
ITALFERR
GRUPPO FERROVIE DELLO STATO

GENERAL CONTRACTOR:
Cepav due
Consorzio ENI per l'Alta Velocità

INFRASTRUTTURE FERROVIARIE STRATEGICHE DEFINITE DALLA LEGGE OBIETTIVO N. 443/01
LINEA A.V. /A.C. TORINO - VENEZIA Tratta MILANO - VERONA
Lotto funzionale Brescia-Verona
PROGETTO ESECUTIVO
GALLERIA NATURALE LONATO IMBOCCO LATO VERONA (GI05)
PK 120+772.00

Armatura pali paratie (TAV.1/2)

GENERAL CONTRACTOR: **Cepav due** (Fig. 1/12/12)

DATE: 06 OTT 2018

| COMMESSA | LOTTO | FASE | ENTE | TIPO DOC. | OPERA/DISCIPLINA | PROGR. | REV. |
|----------|-------|------|------|-----------|------------------|--------|------|
| INOR | 11 | E | E2 | B2 | G10500 | 004 | A |

PROGETTAZIONE:
A EMISSIONE
B
C

Stampato dal Servizio di plottaggio ITALFERR S.p.A.
ALBA s.r.l.