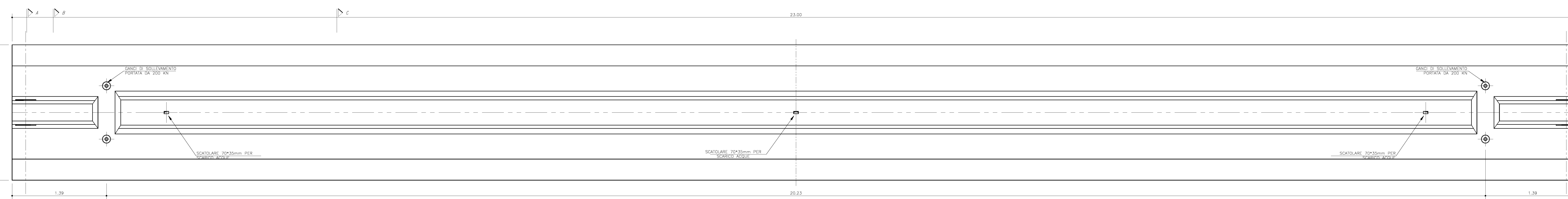
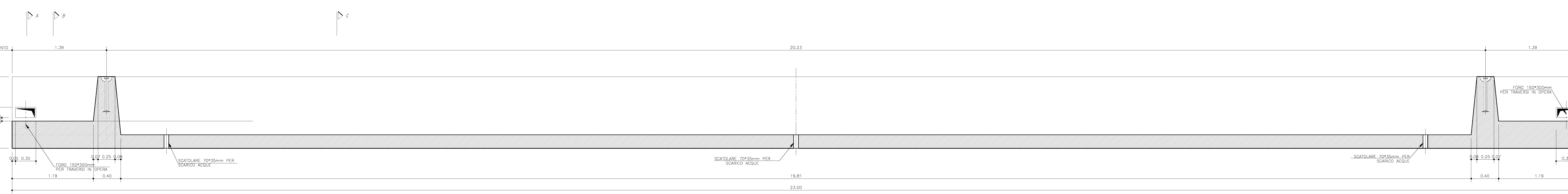


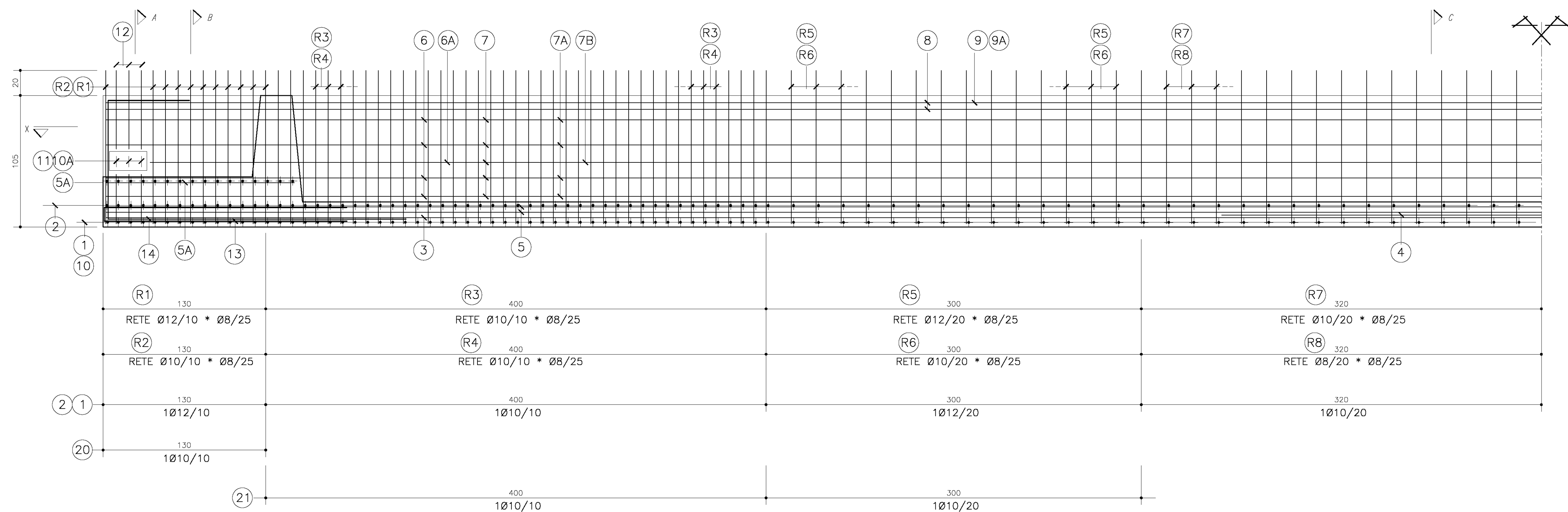
PIANTA
scala 1:20



SEZIONE LONGITUDINALE
scala 1:20



ARMATURA
scala 1:20

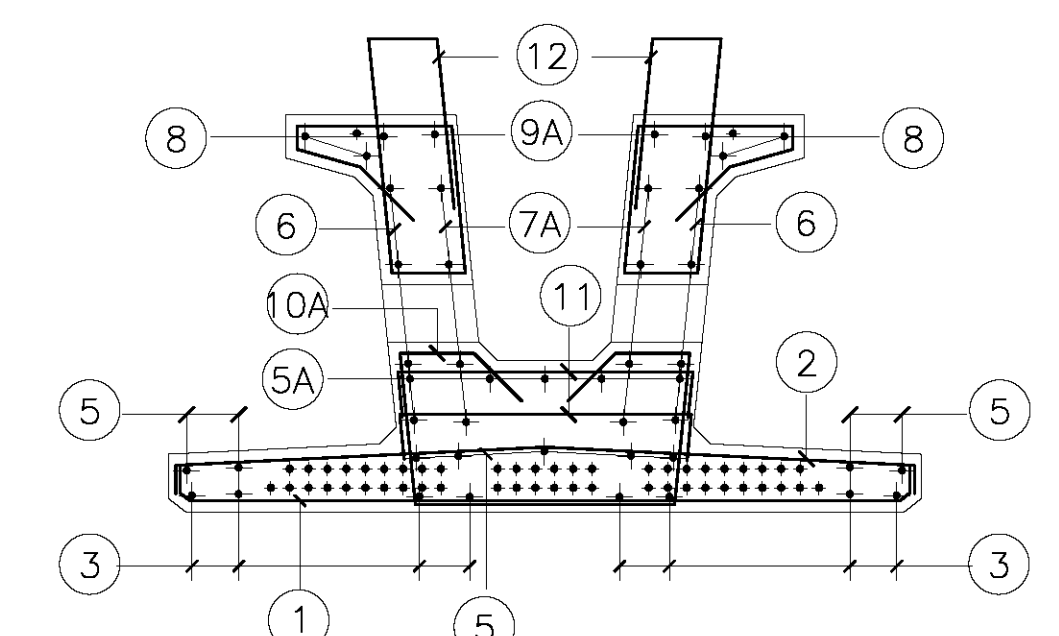


POSIZIONE	10	1	12	10	2	12	3	4	5	5A	6	6A	7	7A	7B	8	9	9A	10	10A	11	12					
Ø (mm)	10	10	10	10	10	10	10	10	10	10	10	10	10	10	10	10	10	10	10	10	10	10	10				
N. FERRI	40+40	33	14+14	15+15	40+40	33	14+14	15+15	12	4	9	5	4+4	1+1	5+5	(4+4)*2	(1+1)*2	3+3	(1+1)	(1+1)*2	12*2	3*2	(15+15)*2	(3+3)*2			
PASSO (cm)	1/10	1/20	1/10	1/20	1/10	1/20	1/10	1/20	2.32	2.06	12.0+11.75	6.00	12.0+11.50	1.50	12.0+11.50	12.0+10.80	12.0+9.10	2.37	2.07	12.0+11.50	12.0+9.10	2.37	1.60	1.71	0.97-1.00	2.60	
LUNG.(m)	2.32	2.32	2.32	2.32	2.32	2.32	2.32	2.32	2.32	2.32	2.32	2.32	2.32	2.32	2.32	2.32	2.32	2.32	2.32	2.32	2.32	2.32	2.32	2.32	2.32	2.32	
SAGOMA	12	12	12	12	12	12	12	12	12	12	12	12	12	12	12	12	12	12	12	12	12	12	12	12	12	12	
NOTE																											
PESO ACCIAIO Kg																											

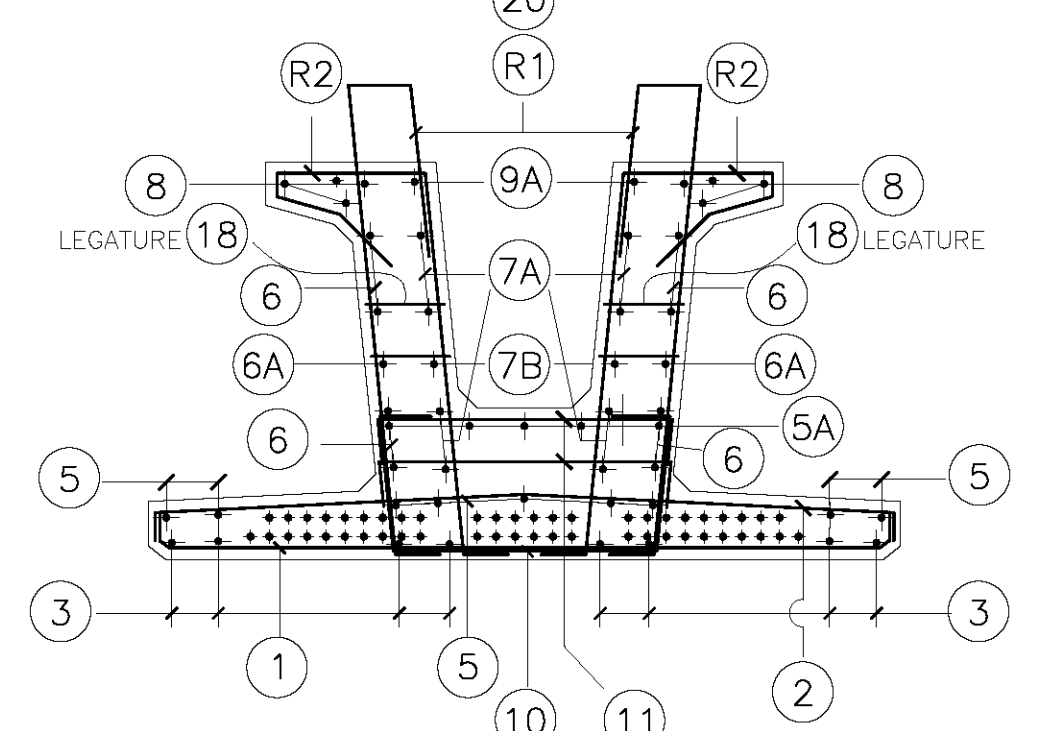
POSIZIONE	13	14	15	16	18	19	20	21	RETI	R1	R2	R3	R4	R5	R6	R7	R8
Ø (mm)	16	26	10	10	8	8	10	10	Ø Trasv. (mm)	12/10	10/10	10/10	10/10	12/20	10/20	10/20	8/20
N. FERRI	5*2	(2+2)*2	4+4	(5+5)*2	—	—	—	—	Ø Long. (mm)	8/25	8/25	8/25	8/25	8/25	8/25	8/25	8/25
PASSO (cm)	—	—	—	1+1/15	1/80	1/80	1/10	1/10	SVIL. (m)	1.97	1.93	1.89	1.85	1.89	1.85	1.89	1.85
LUNG.(m)	4.00	4.00	2.36	VARIABILI	0.35	0.30	1.00	0.92	LUNGH. (m)	4*1.30	4*1.30	4*4.00	4*4.00	4*3.00	4*3.00	2*6.40	2*6.40
SAGOMA	12	12	12	12	12	12	12	12	SAGOMA	122	122	122	122	122	122	122	122
NOTE	IN TESTATA	IN TESTATA	TRASVERSO	TRASVERSO	LEGATURE	LEGATURE	INTEGRAZIONI IN SOLETTA	INTEGRAZIONI IN SOLETTA	NOTE								
PESO ACCIAIO Kg									PESO ACCIAIO Kg								

VOLUME TRAVE = 16.55 mc
PESO = 413.75 KN
GANCI n°4 PORTATA 200 kN

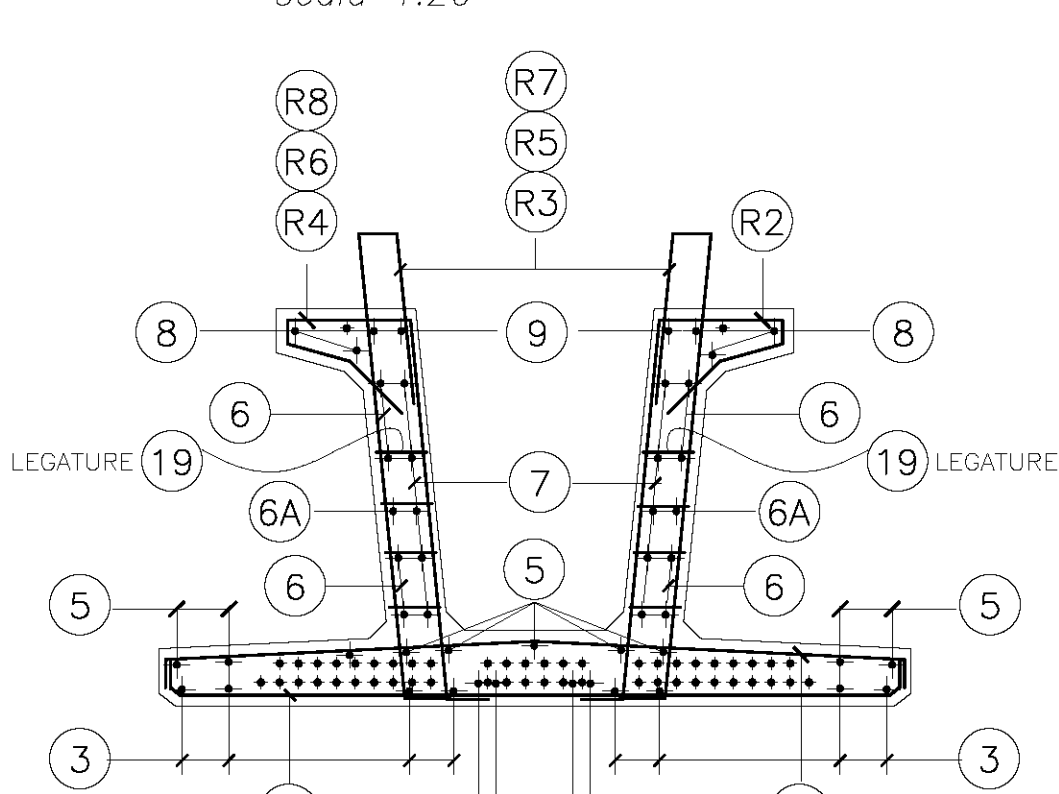
SEZIONE A-A
scala 1:20



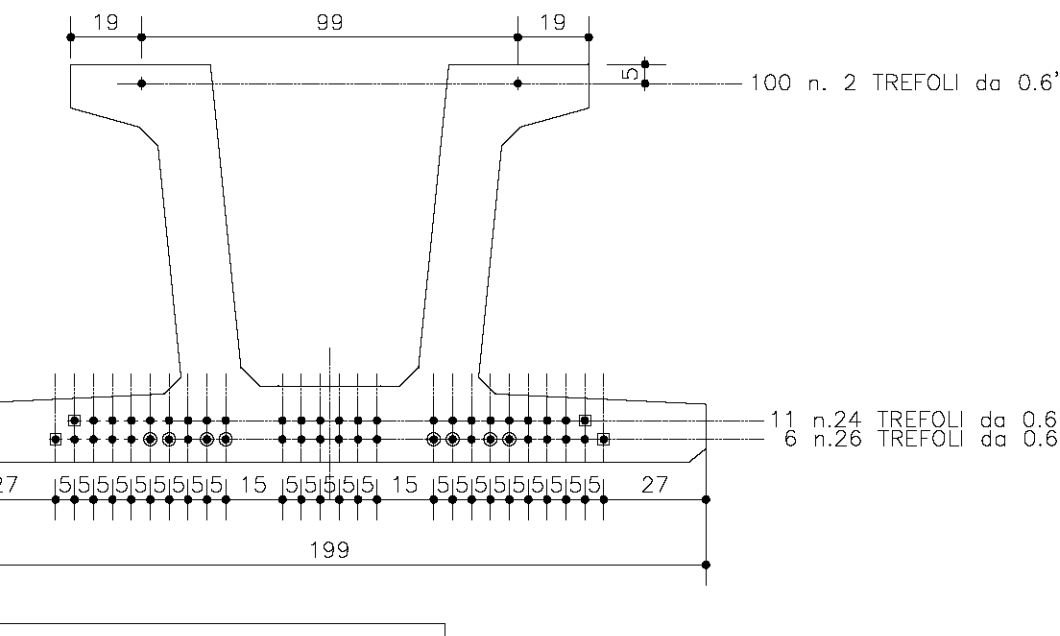
SEZIONE B-B
scala 1:20



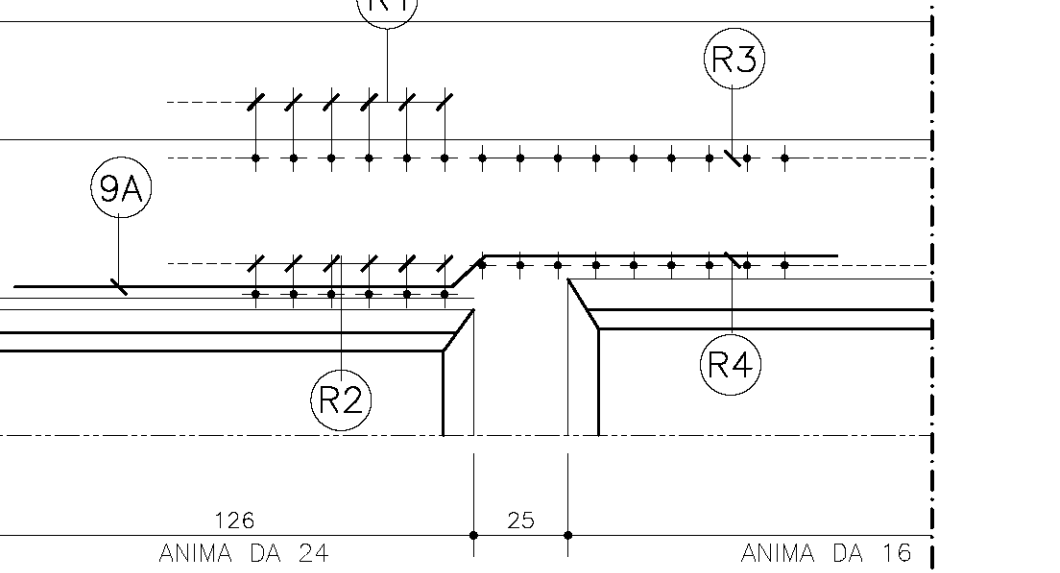
SEZIONE C-C
scala 1:20



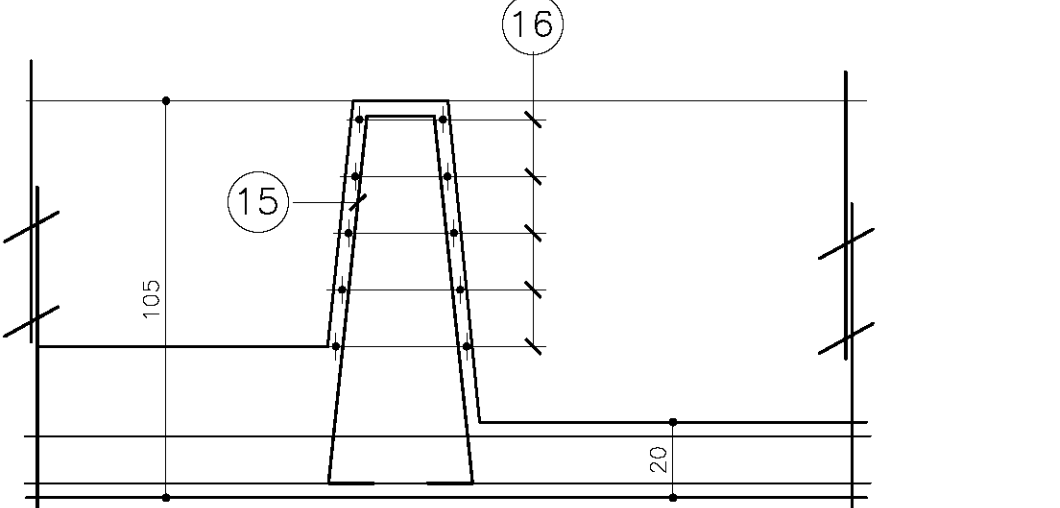
ARMATURA DI PRECOMPRESSIONE N°=52
scala 1:20



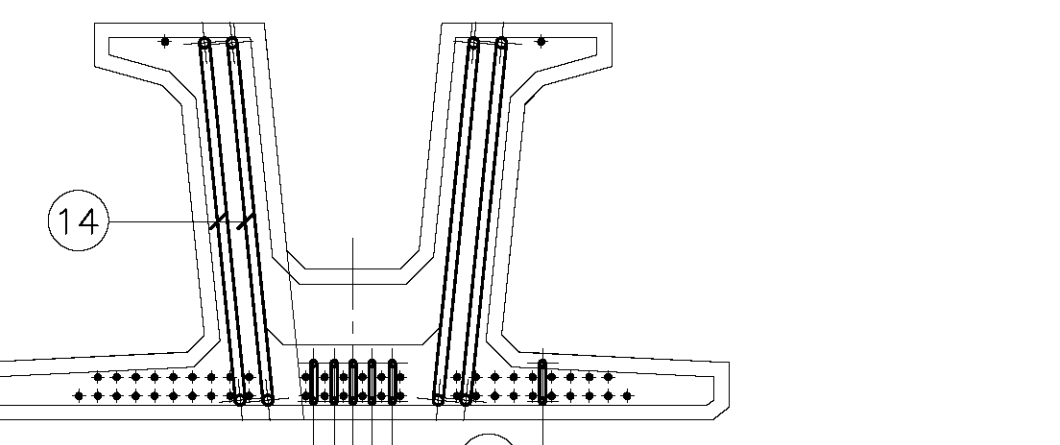
SEZIONE X-X
scala 1:20



ARMATURA TRASVERSO PREF
scala 1:20



VISTA TESTATE
scala 1:20



TUNNEL EURALPIN TORN TURIN

NOUVA LIGNE TORINO-LIGNE - NOUVELLE LIGNE LYON-TURIN
PARTE COMUNE ITALO-FRANCOISE - PARTIE COMMUNE FRANCO-ITALIENNE

LOTTO COSTRUTTIVO 1 / LOT DE CONSTRUCTION 1
CANTIERE OPERATIVO 02C / CHANTIER DE CONSTRUCTION 02C
RILocalizzazione dell'Autoporto di Susa
DEPLACEMENT DE L'AUTOPORTO DE SUSE
PROGETTO ESECUTIVO - ETUDES D'EXECUTION
CUP C11J05000030001 - CIG 682328367F

OPERE D'ARTE MINORI
ADEGUAMENTO OPERA PK 24+358
Impalcato - Carpenteria e armatura travi C.A.P.

Id	Rev	Data	Modifiche/Note	Disegnato/Controllato	Verificato/Controllato	Autore/Approvato
0	30542017		Profilo d'ufficio - Prima emissione	A.MARIN (DARWIN)	L. BARBERIS (ARUNET Eng)	F. COMBES (ARUNET Eng)
A	31662017		Revisione a seguito commenti TELT - Modifica alla carpenteria TELT	A.MARIN (DARWIN)	L. BARBERIS (ARUNET Eng)	F. COMBES (ARUNET Eng)
B	30542018		Recupero della tabella validazione TRAVI Check	F. COMBES (ARUNET Eng)	L. BARBERIS (ARUNET Eng)	F. COMBES (ARUNET Eng)

1 0 2 C C C 1 6 1 6 7 0 C A 0 W G E G C P L 1 2 0 7 B

SCALA / ECHELLE

TUNNEL EURALPIN TORN TURIN

SITAF spa

EUROPEAN UNION