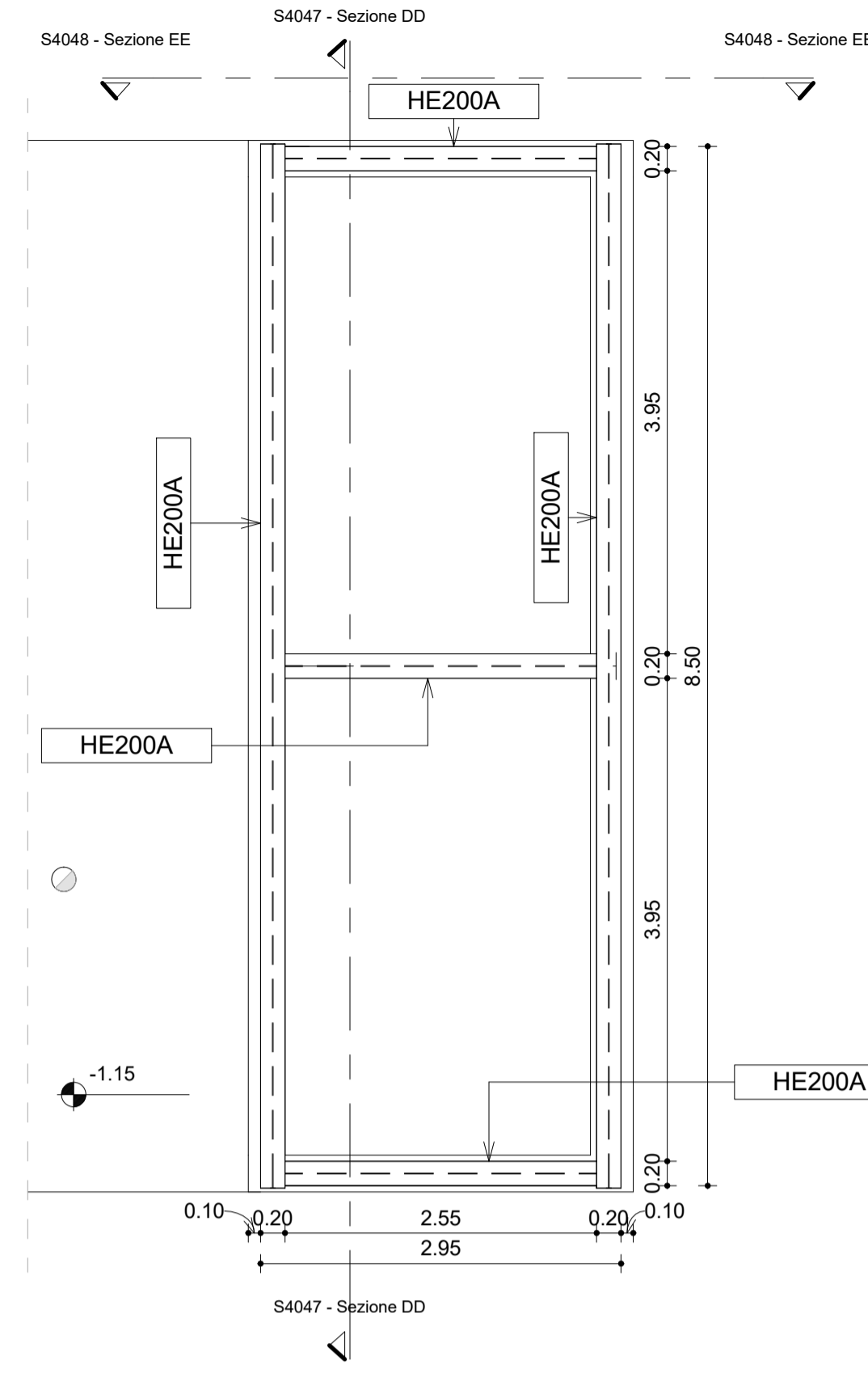
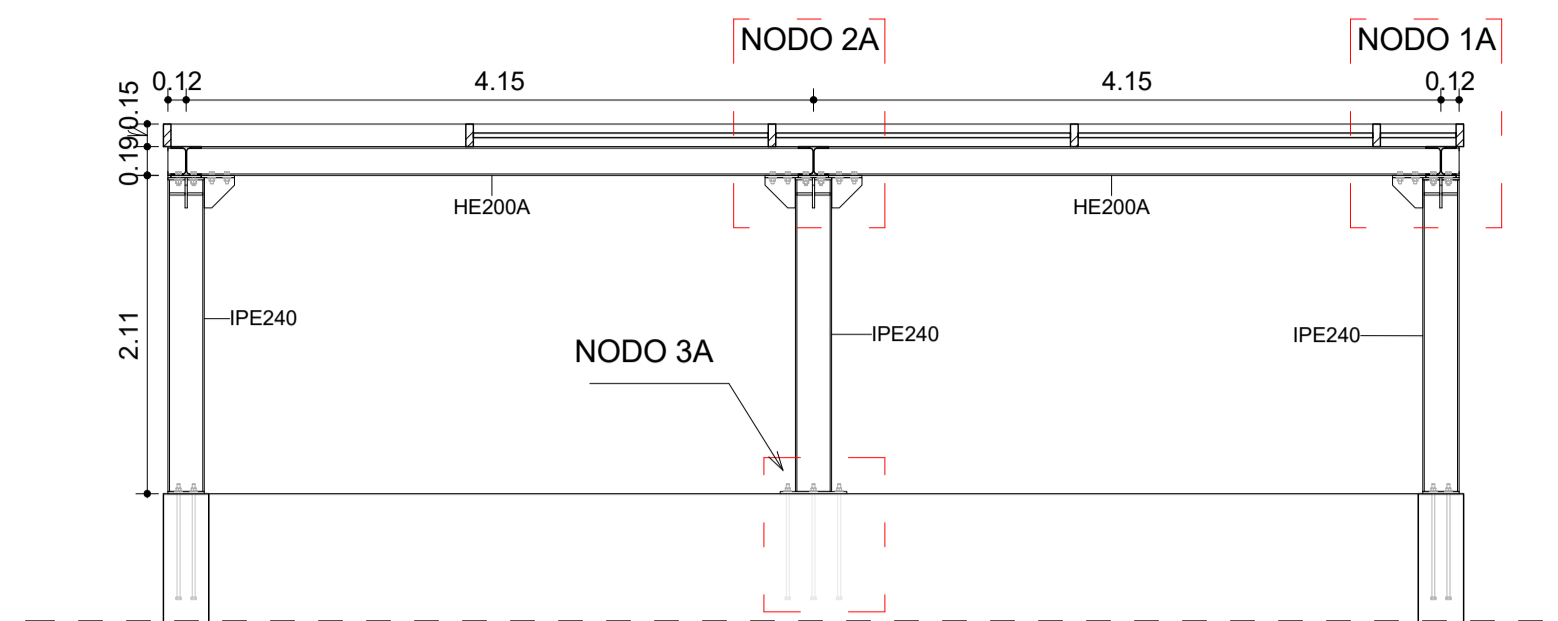


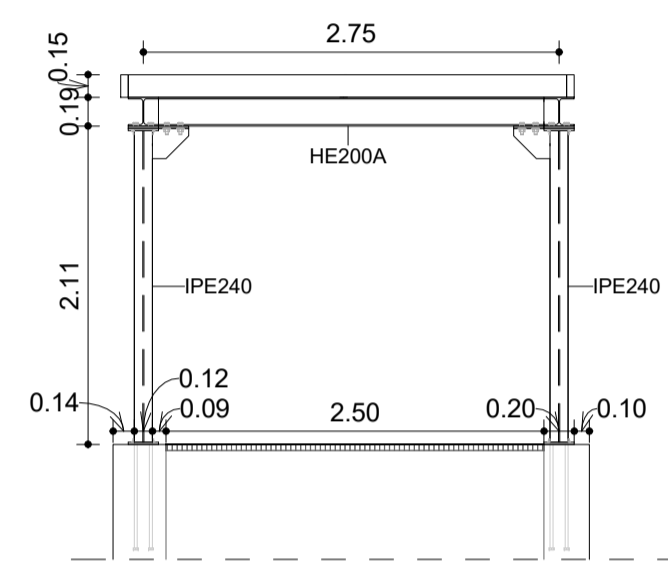
S1022 - Pianta pensilina
1 : 50



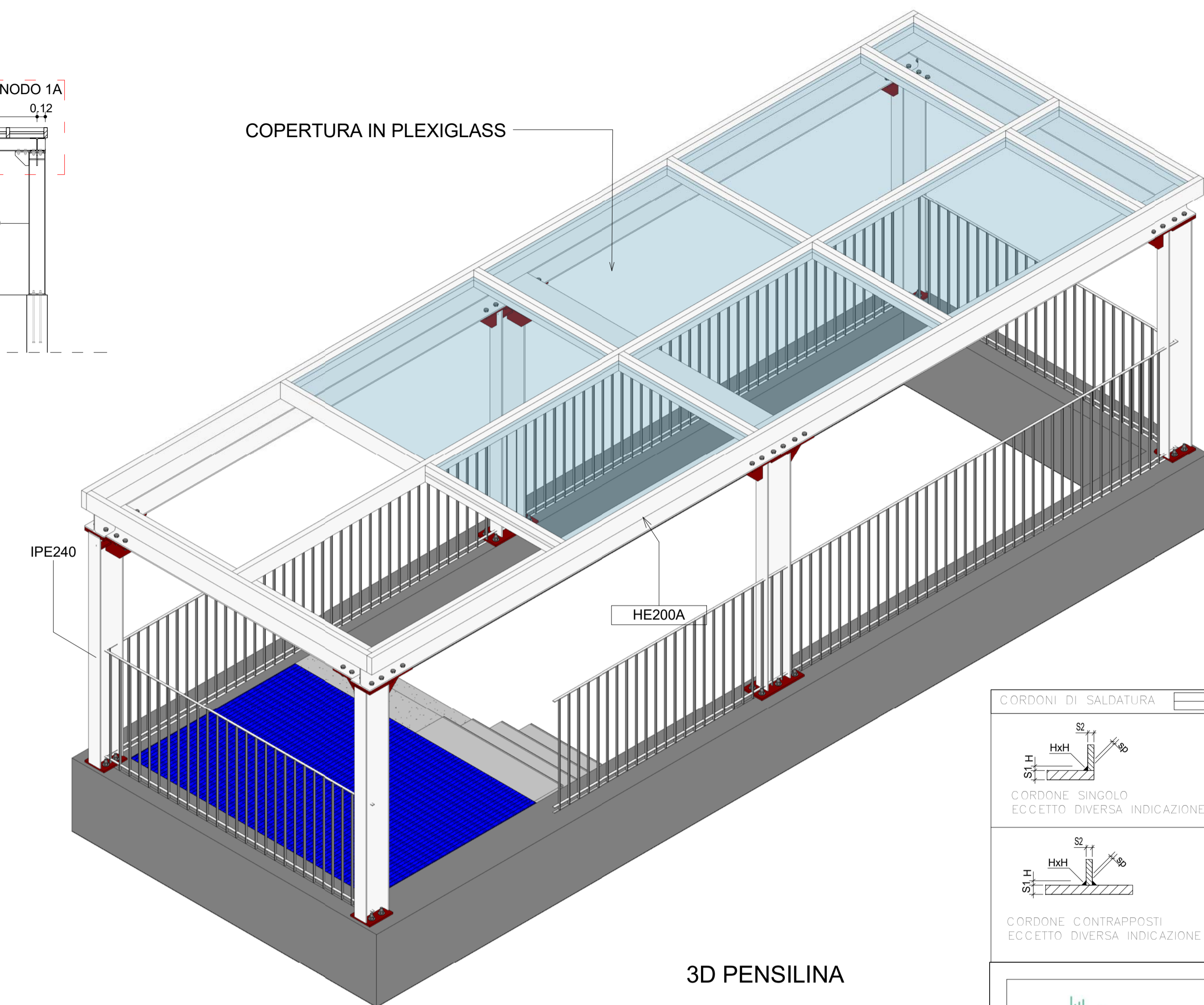
S1023 - Carpenteria pensilina
1 : 50



S4047 - Sezione DD
1 : 50

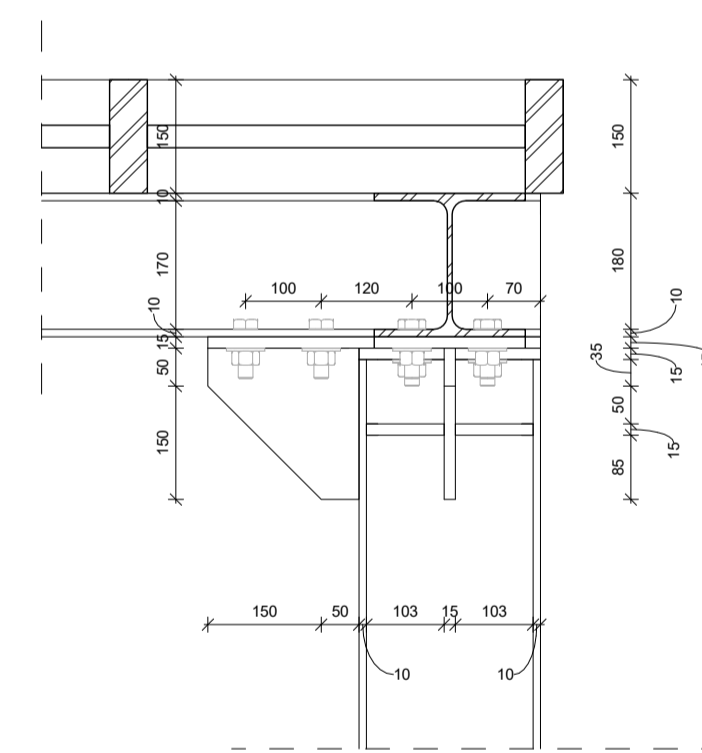


S4048 - Sezione EE
1 : 50

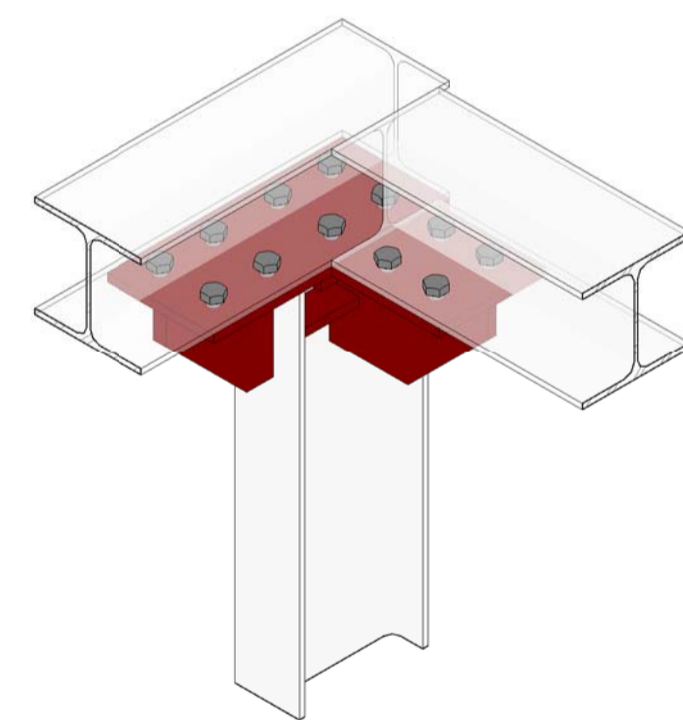


3D PENSILINA

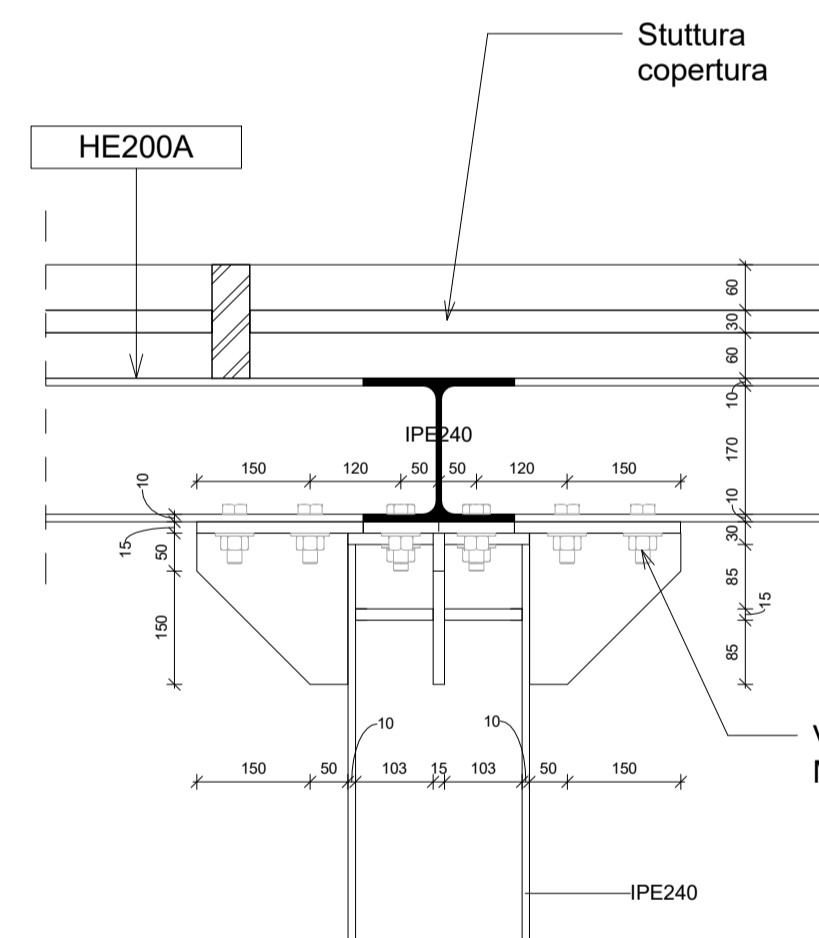
CORDONI DI SALDATURA	
	S1 > S2 H=S2 SP=0,75xS2
	S1 > S2 H=0,7xS2 SP=0,5xS2
	S1 > S2 H=0,7xS2 SP>1,3xS2



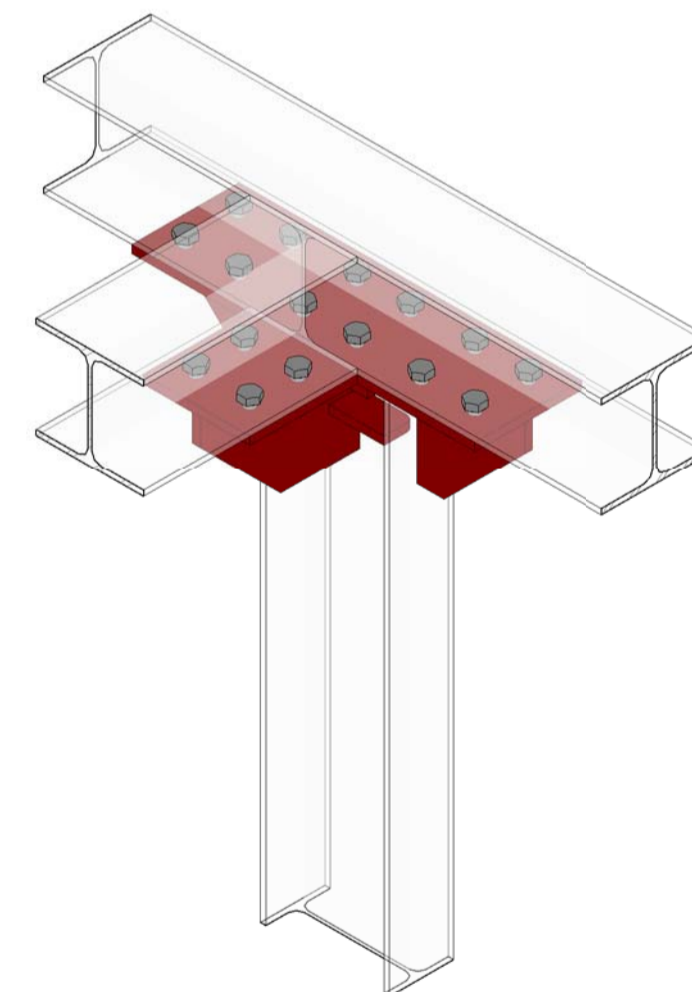
S4049 - VF NODO 1A
1 : 10



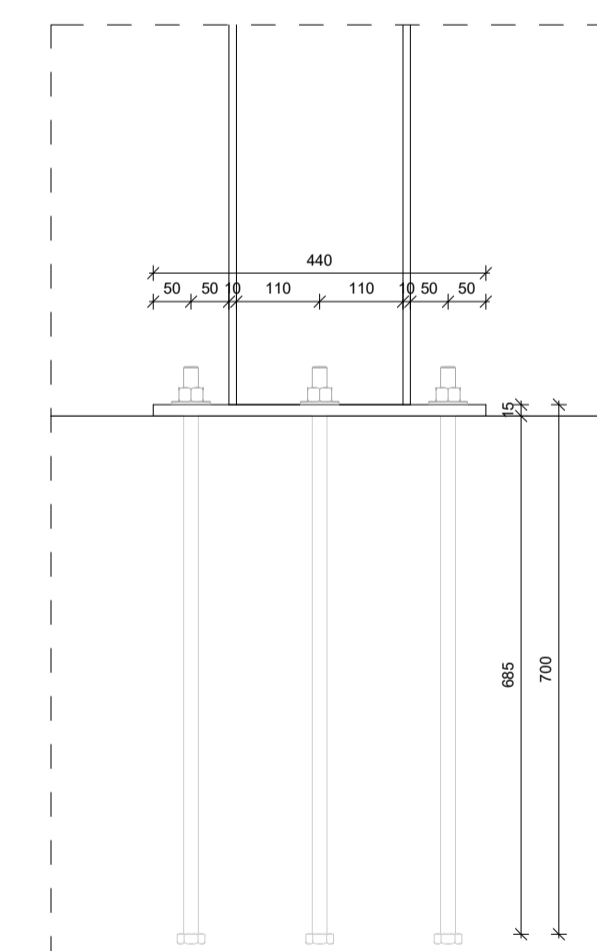
3D NODO 1A



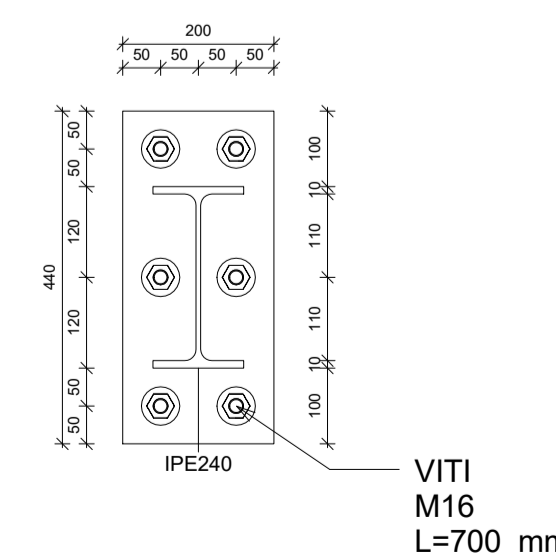
S4050 - VF NODO 2A
1 : 10



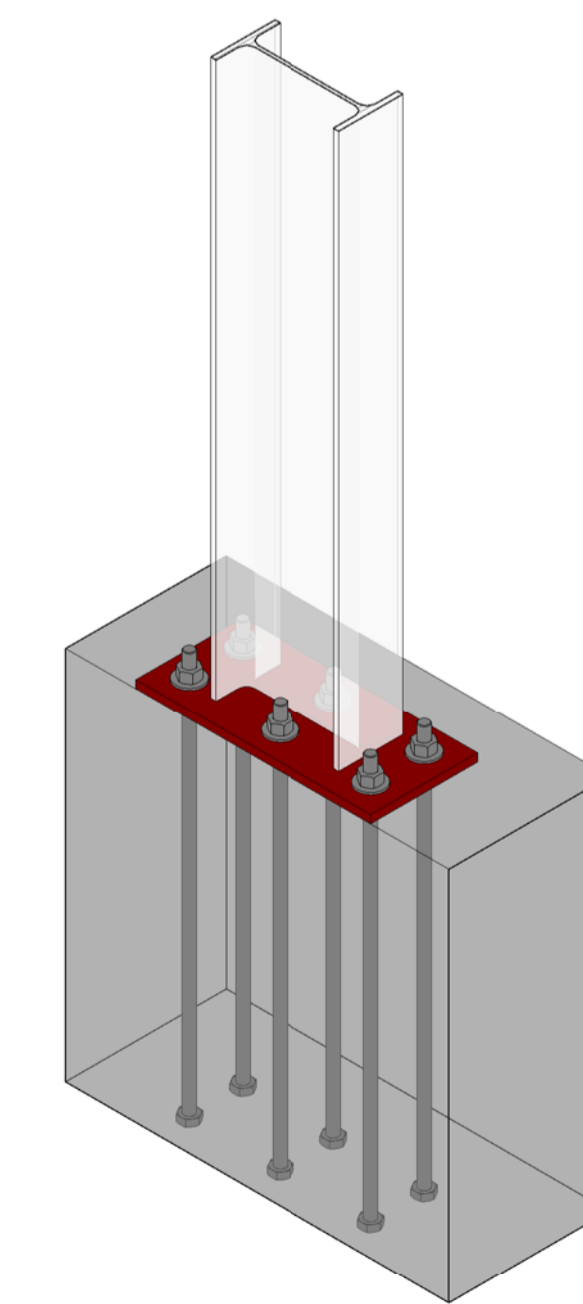
3D NODO 2A



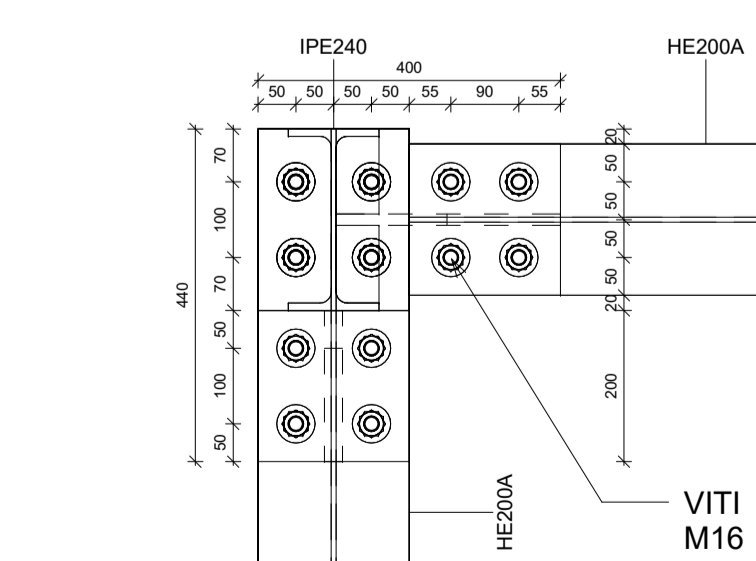
S4051 - VF NODO 3A
1 : 10



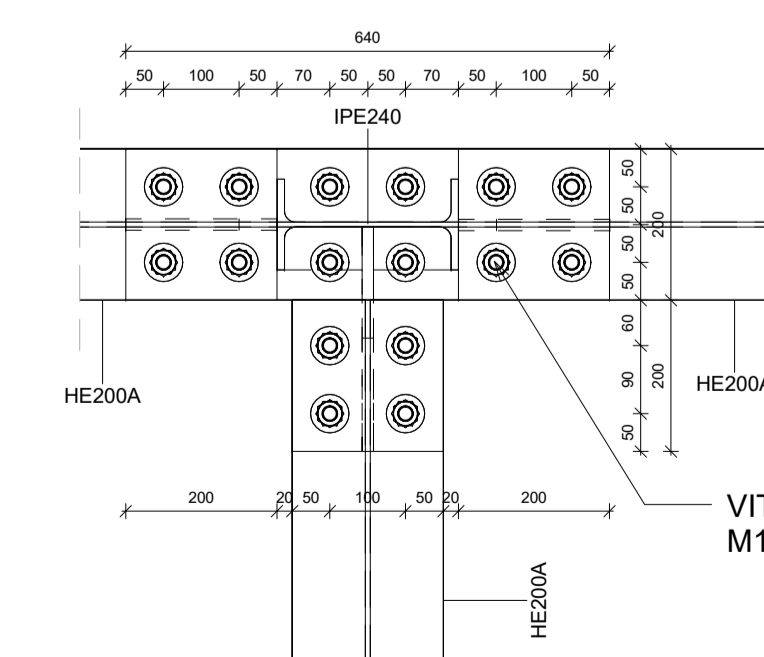
S1026 -PIANTA NODO 3A
1 : 10



3D NODO 3A



S1024 - PIANTA NODO 1A
1 : 10



S1025 - PIANTA NODO 2A
1 : 10



NUOVA LINEA TORINO LIONE - NOUVELLE LIGNE LYON TURIN
PARTE COMUNE ITALO-FRANCESE - PARTIE COMMUNE FRANCO-ITALIENNE
LOTTO COSTRUTTIVO 1 / LOT DE CONSTRUCTION 1
CANTIERE OPERATIVO 02C / CHANTIER DE CONSTRUCTION 02C
RILocalizzazione DELL'AUTOPORTO DI SUSA
DEPLACEMENT DE L'AUTOPORTO DE SUSE
PROGETTO ESECUTIVO - ETUDES D'EXECUTION
CUP C11J05000030001 - CIG 682325367F

OPERE D'ARTE MINORI
CENTRALE ANTINCENDIO
Carpenteria e dettagli costruttivi pensilina di accesso

Indice	Data (Data)	Modificazioni / Modifiche	Elaborato per / Concepito da	Verificato / Controllato da	Autore per / Autorizzato da
0	30/04/2017	Premessa diffusion / Prima emissione	N.MORDAC (DoMo Studio)	L.BARBERIS (MUSINET Eng.)	F.D'AMBRA (MUSINET Eng.)
A	31/08/2017	Revisione a seguito commenti TELT / Revision suite aux commentaires TELT	N.MORDAC (DoMo Studio)	L.BARBERIS (MUSINET Eng.)	F.D'AMBRA (MUSINET Eng.)
B	30/04/2018	Recupero istruttoria validazione RINA Check	P.LESCHE (MUSINET ENG.)	P.D'ALDISIO (MUSINET ENG.)	L.BARBERIS (MUSINET ENG.)

1	0	2	C	C	1	6	1	6	7	I	M	A	2	0	8
---	---	---	---	---	---	---	---	---	---	---	---	---	---	---	---

INTEGRAZIONE PRESTAZIONI SPECIALISTICHE / INTEGRATION SPECIALSETTE	SCALA / ÉCHELLE
Del. Arch. PIERPAOLO GALASSI / Arch. di Torino / N° 5185 B	Come indicato

L'APPALTAZIONE/ENTREPRENEUR	L'ORETTORE DEI LAVORI LA MATRE D'OUVRAGE
Del. Arch. Corrado GIOVANNETTI / Arch. di Torino / N° 2738	

