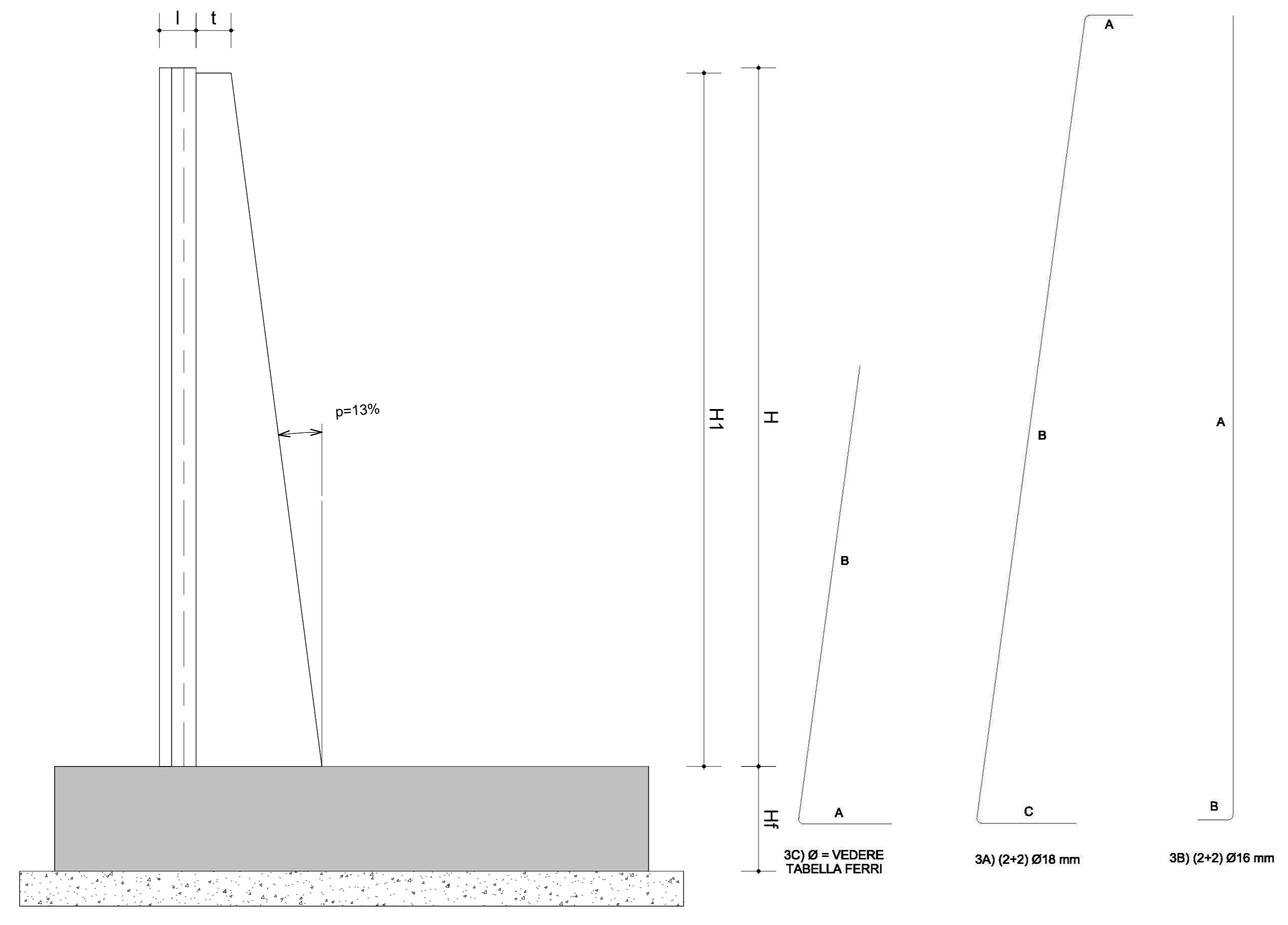


Esplso ferri muro

Parametri Muro table with columns for H, L1, L2, etc.

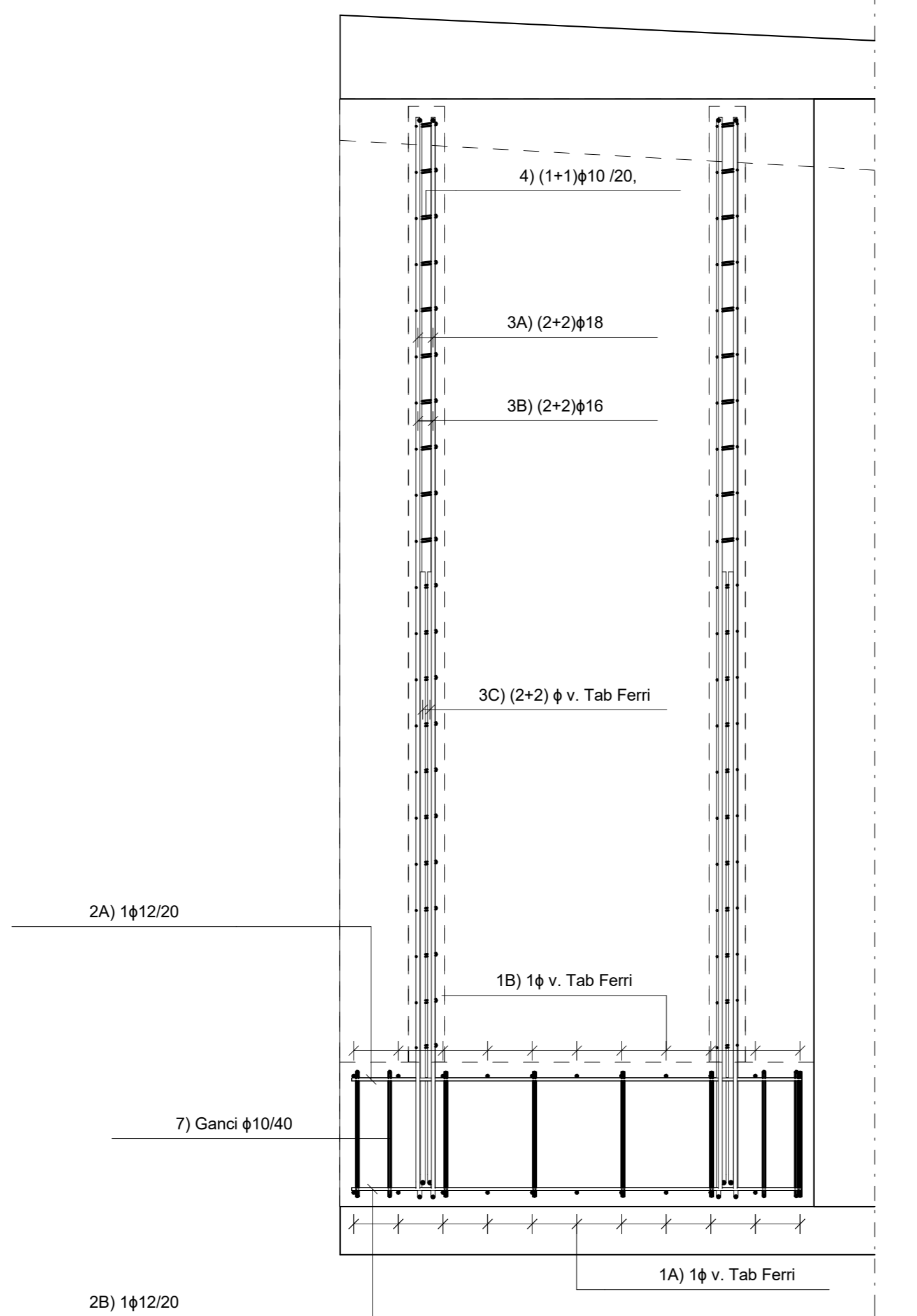
TABELLA FERRI MURO and TABELLA STAFFE SINGOLA COSTOLATURA tables with columns for Pos., #, Passo, Lung., etc.



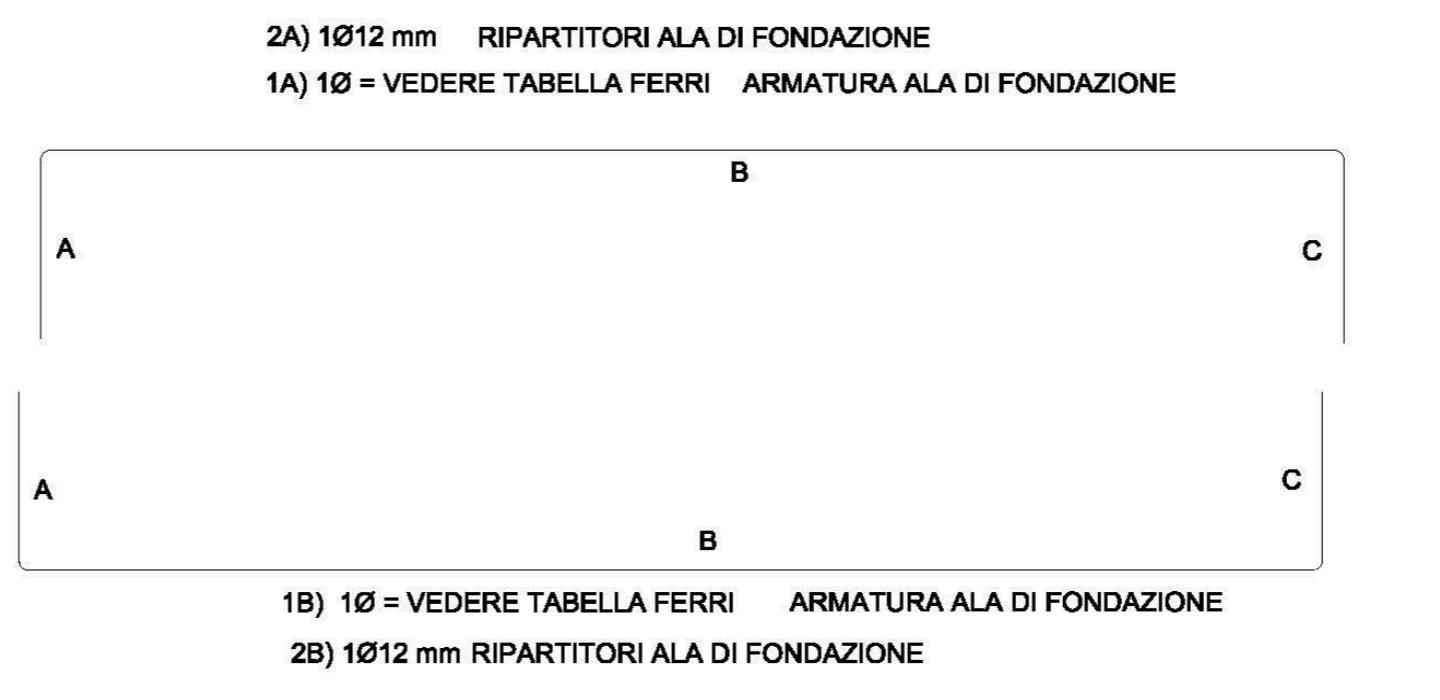
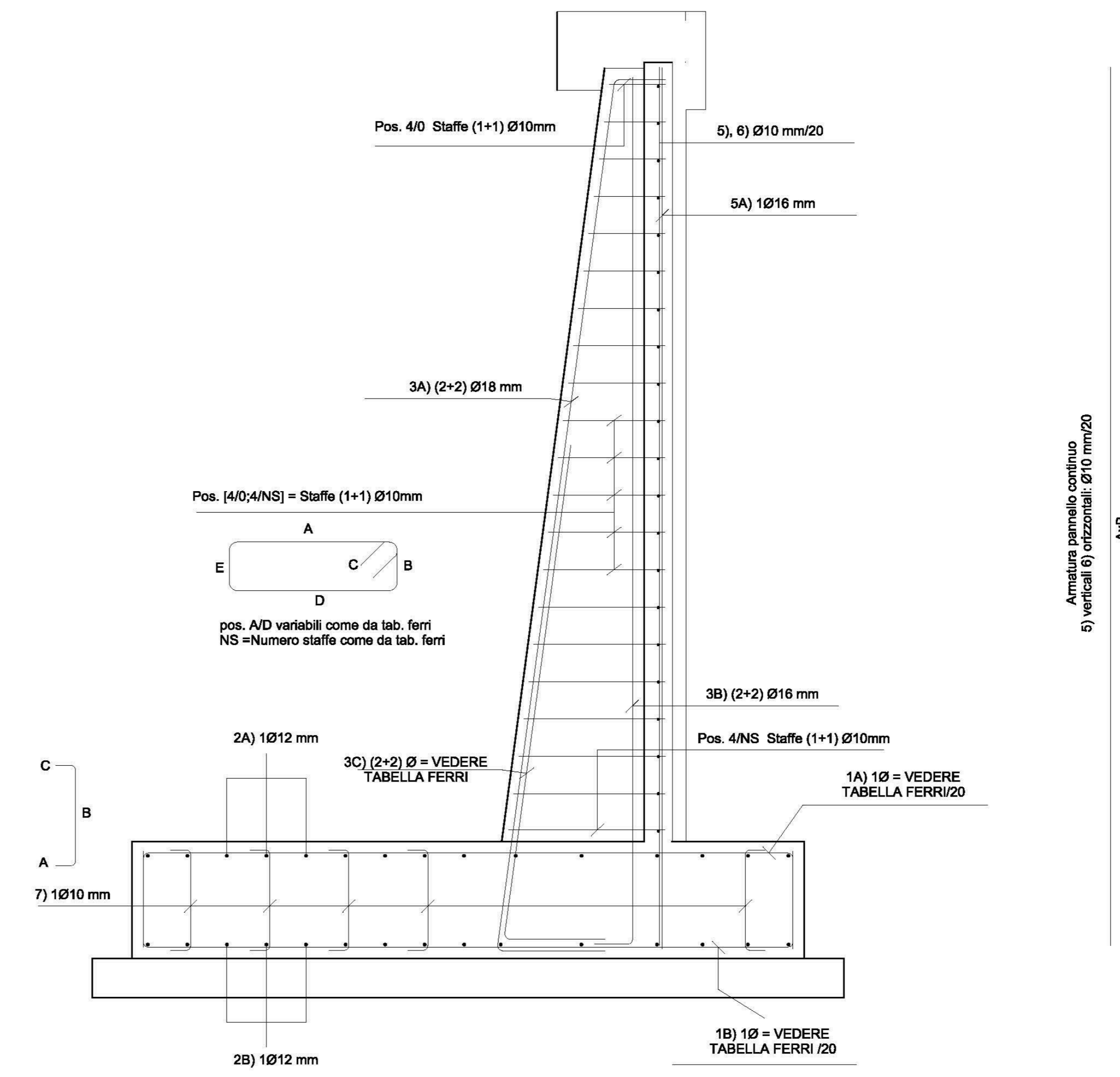
S4041 - MURO_TIPO 1 : 20

Parametri Muro table for a different wall type with columns for H, L1, L2, etc.

TABELLA FERRI MURO and TABELLA STAFFE SINGOLA COSTOLATURA tables for the second wall type.



S4043 - Amatura Longitudinale Muro Tipo 1 : 20



S4042 - Armatura Costola Muro Tipo 1 : 20

Esplso ferri muro

Sviluppo Muro table with columns for TIPO, H (cm), Hf (cm).

Tabella Tipologici SV3 1 : 1

CARATTERISTICHE DEI MATERIALI (conformi a D.M. 14.01.2008)

Table with columns for Calcestruzzo, Acciaio per C.A., and Acciaio per C.A.P.

Table for Acciaio per C.A. with columns for Tipo, f_{yk}, f_{tdk}, etc.

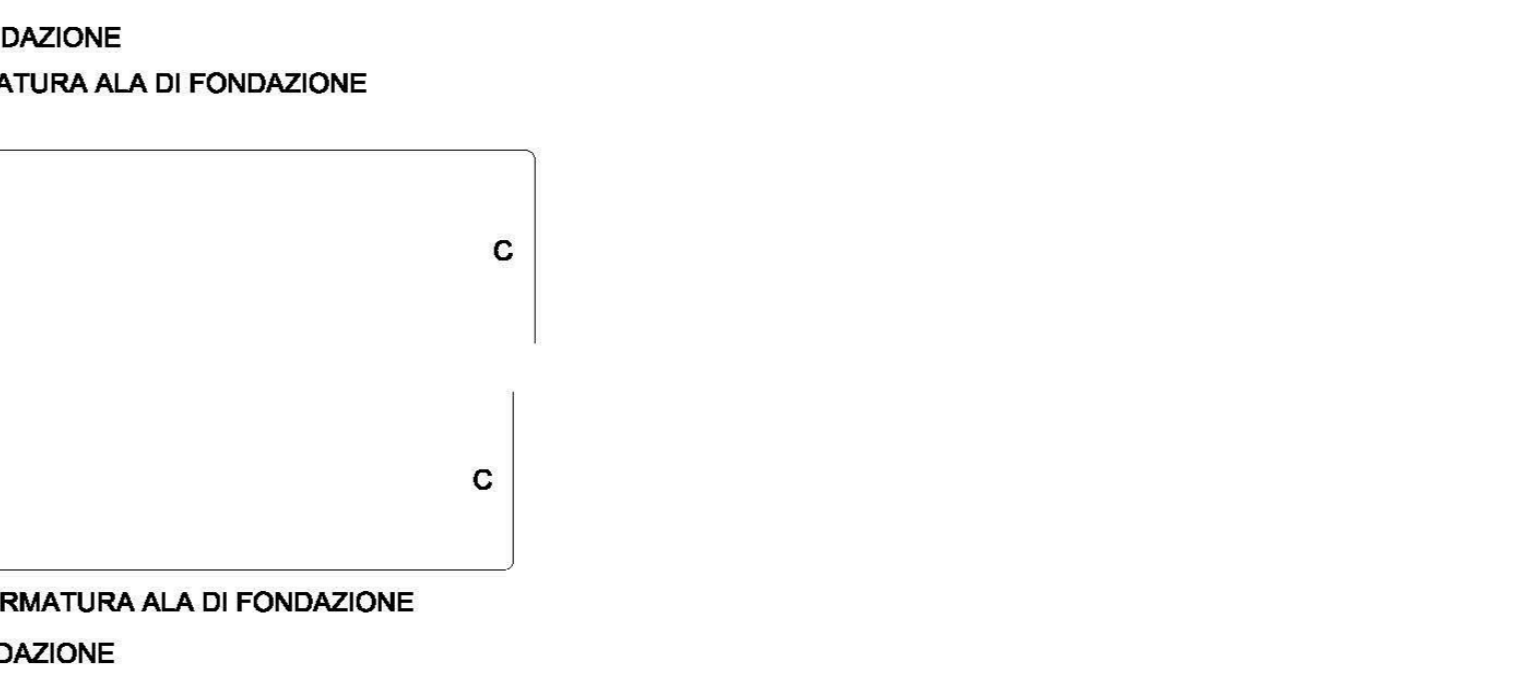
Table for Acciaio per C.A.P. with columns for f_{yk}, f_{tdk}, etc.

Table for Acciaio da Carpenteria Metallica with columns for Tipo, f_{yk}, f_{tdk}, etc.

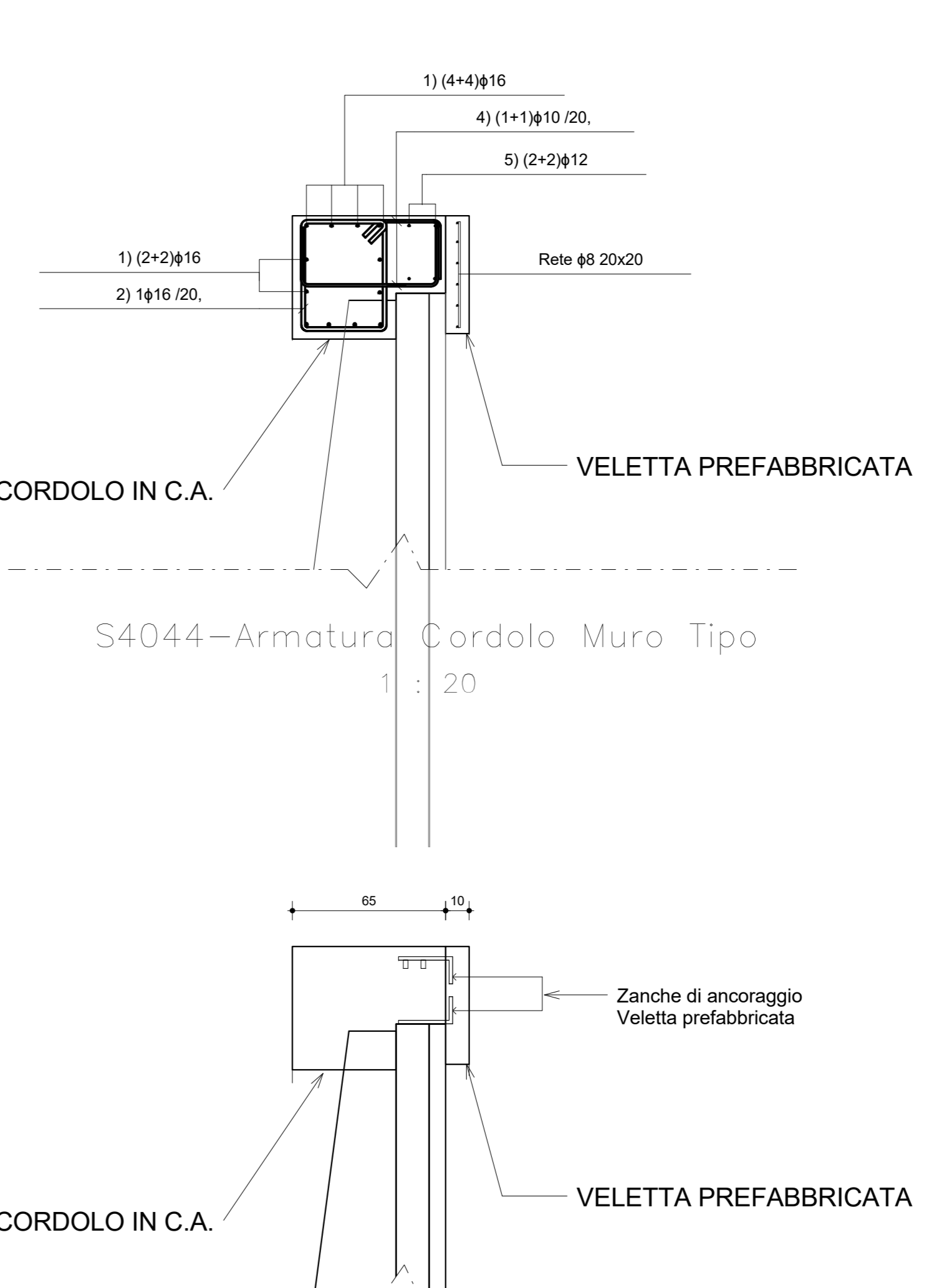
BULLONI section with technical specifications.

SALDATURE section with technical specifications.

TATTAMENTI PROTETTIVI section with technical specifications.



S4044 - Armatura Cordolo Muro Tipo 1 : 20



S4045 - Dettaglio attacco veletta 1 : 20

Project information block including company logos, project name, and a table of revisions.