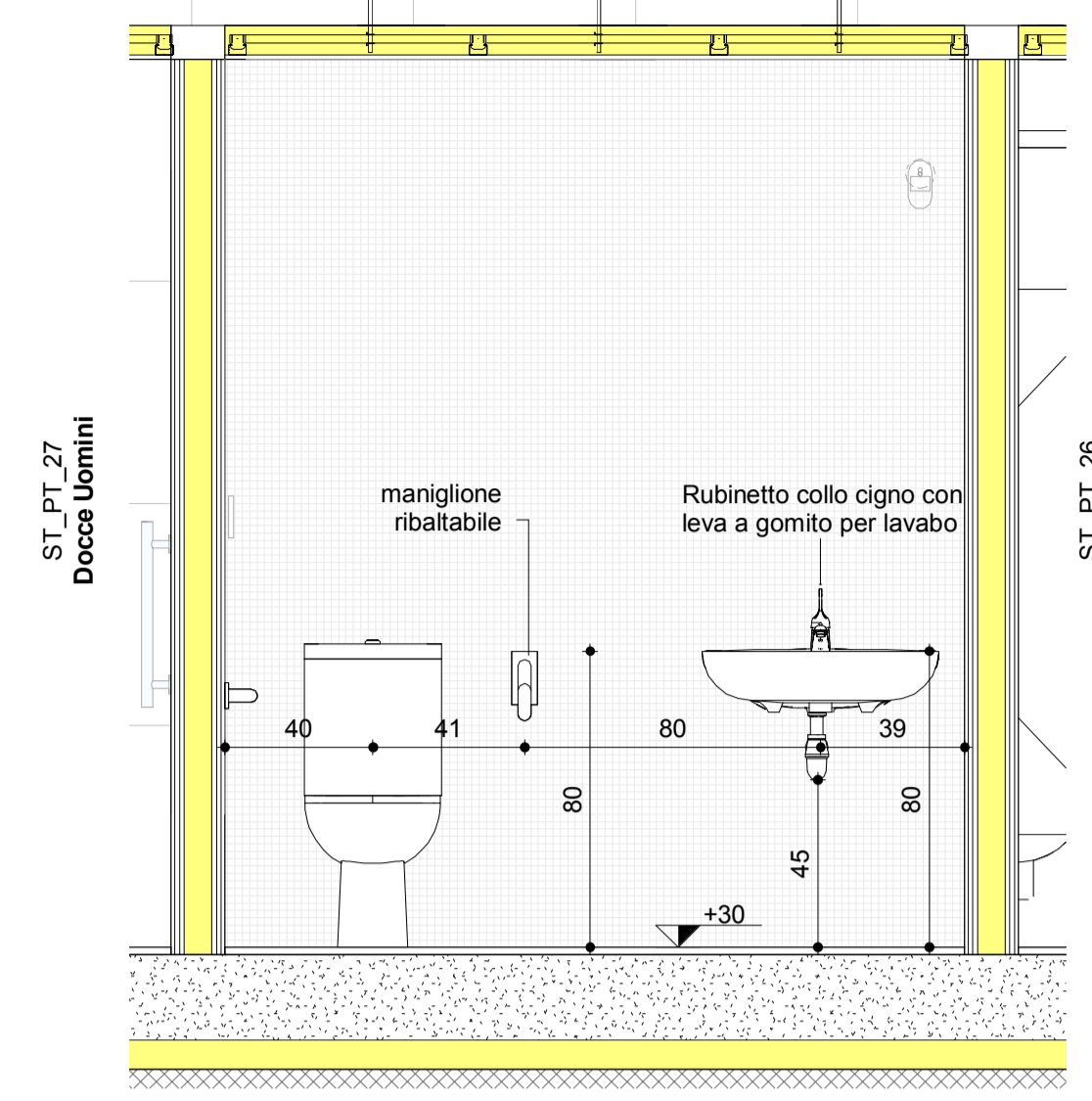
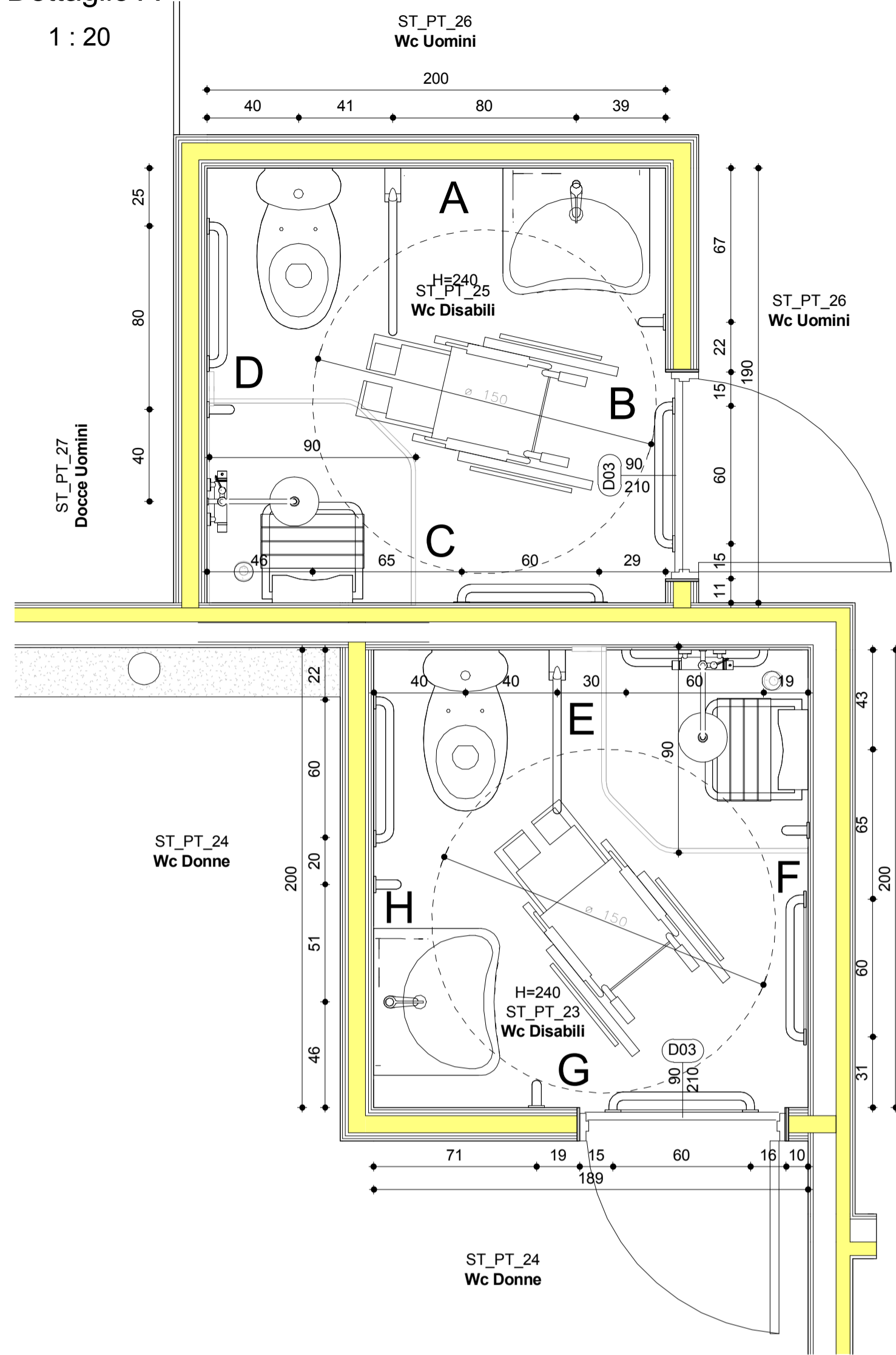
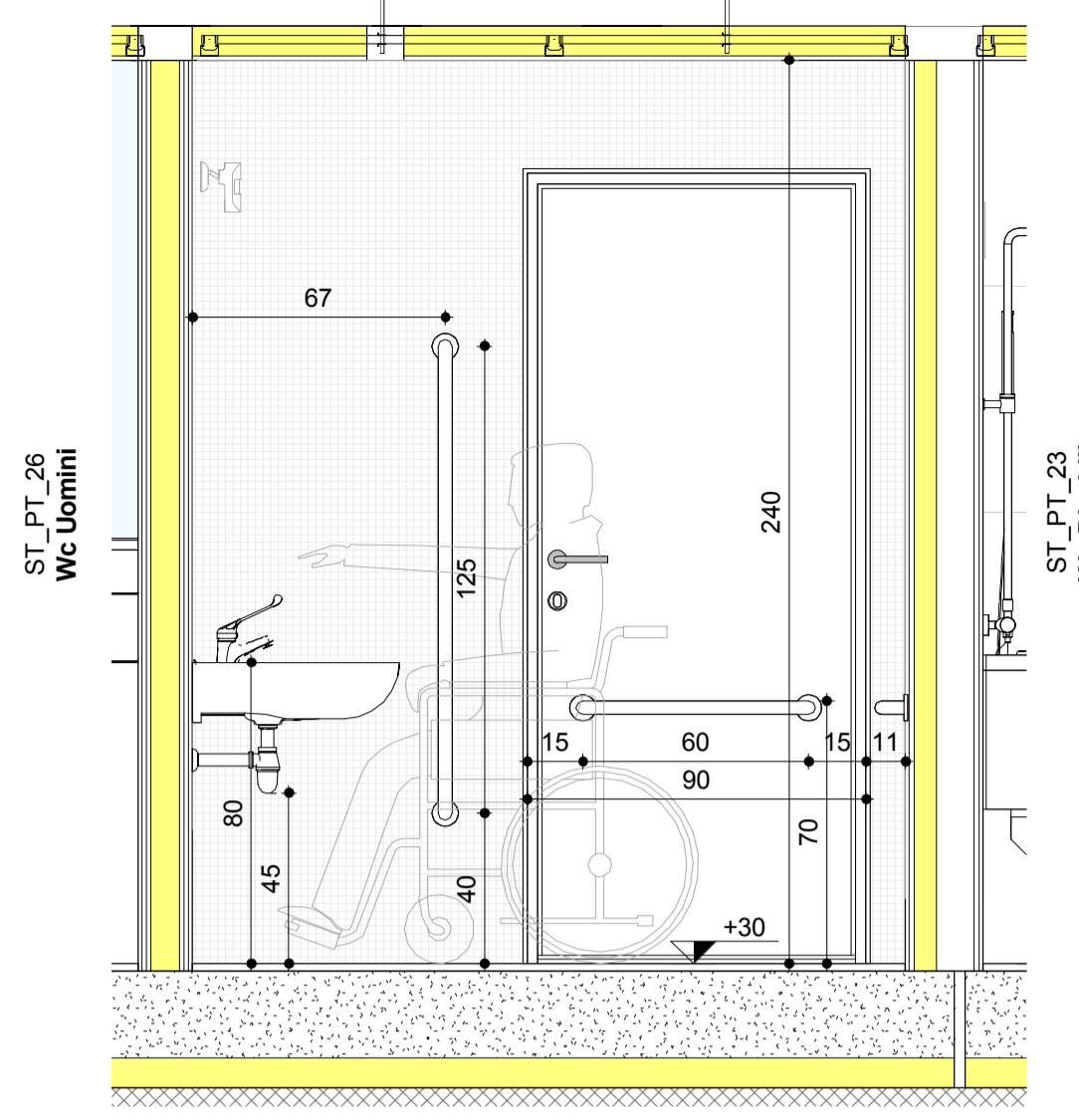


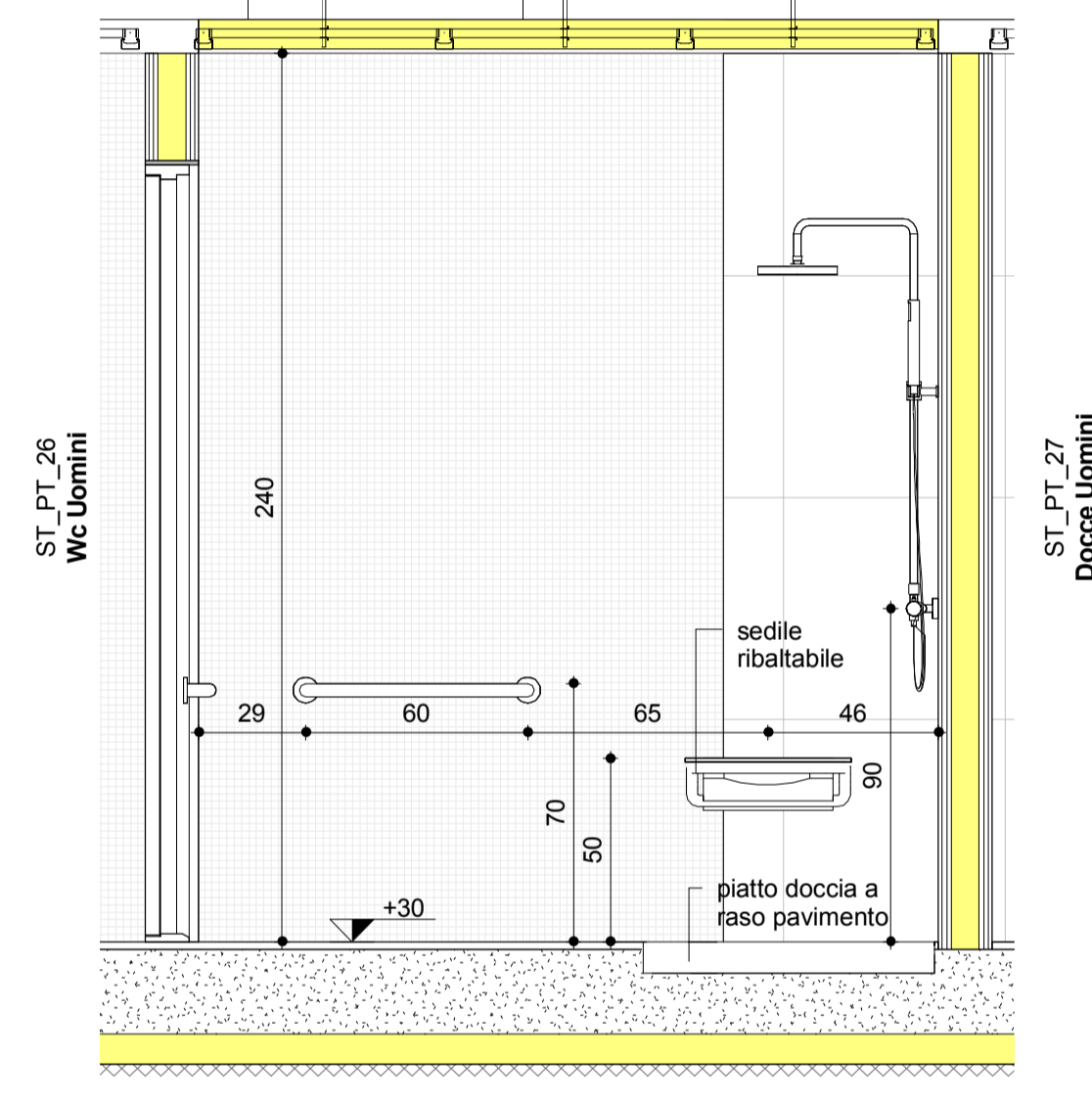
**Dettaglio A**  
1 : 20



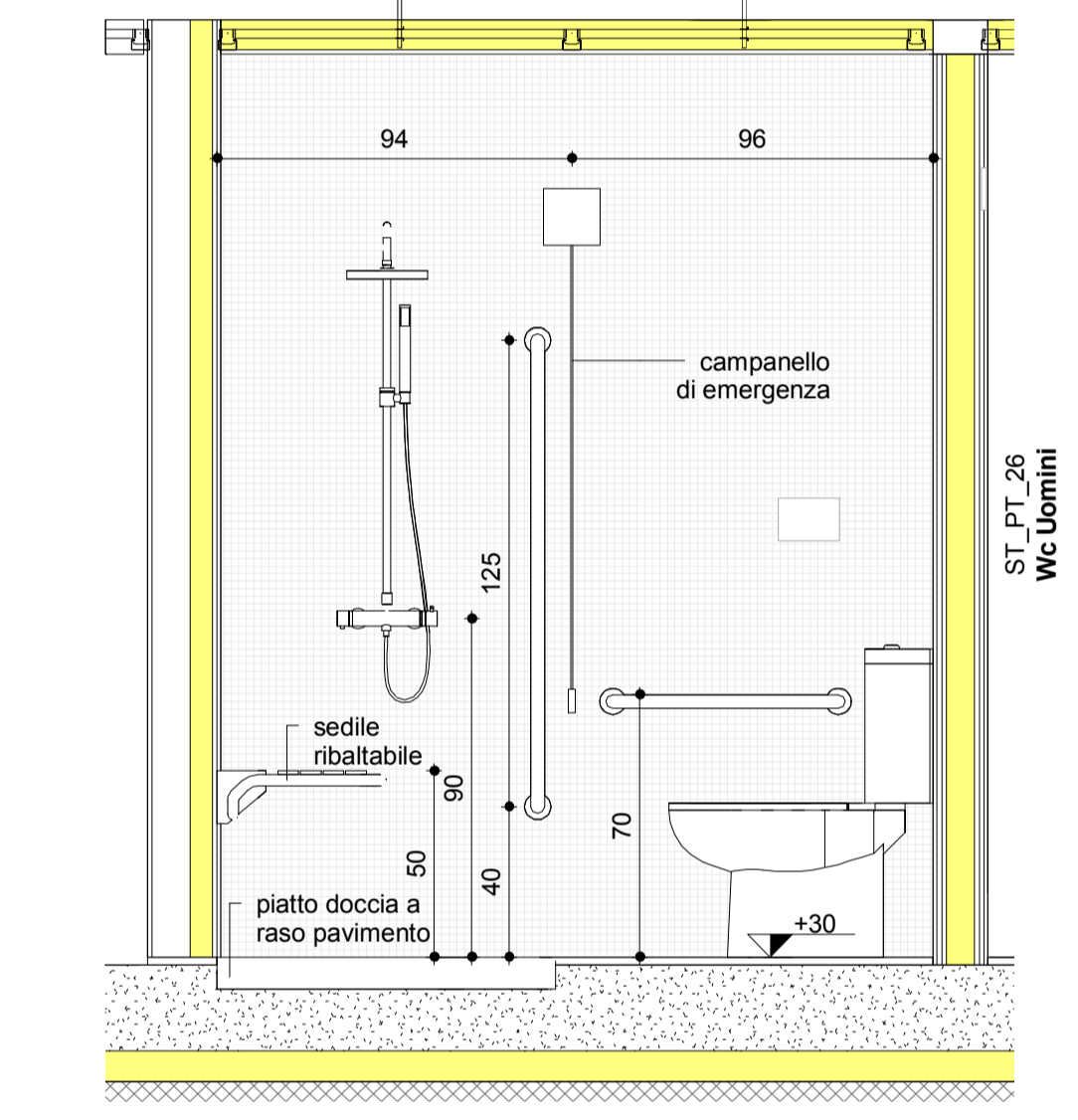
Prospetto A\_Dettaglio A  
1 : 20



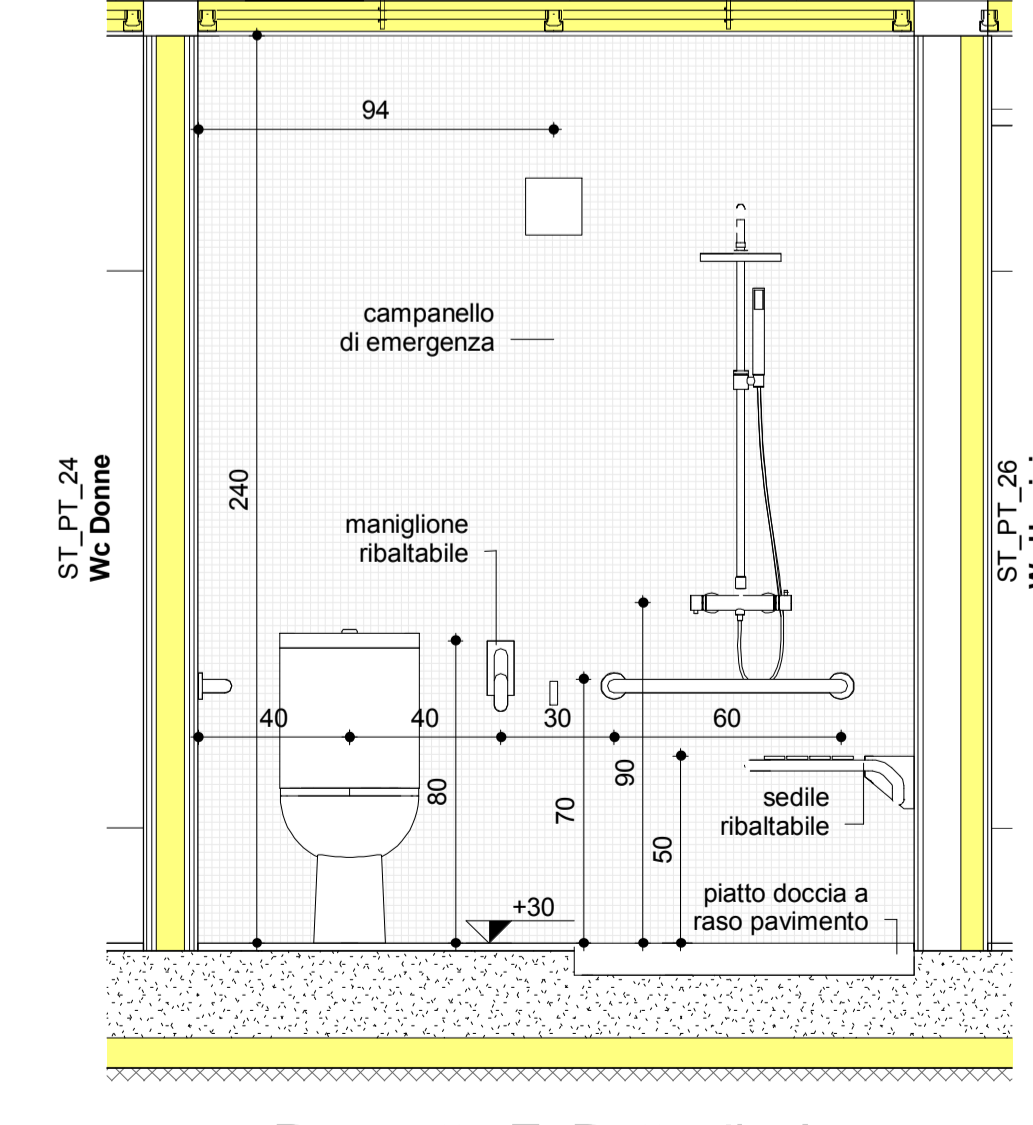
Prospetto B\_Dettaglio A  
1 : 20



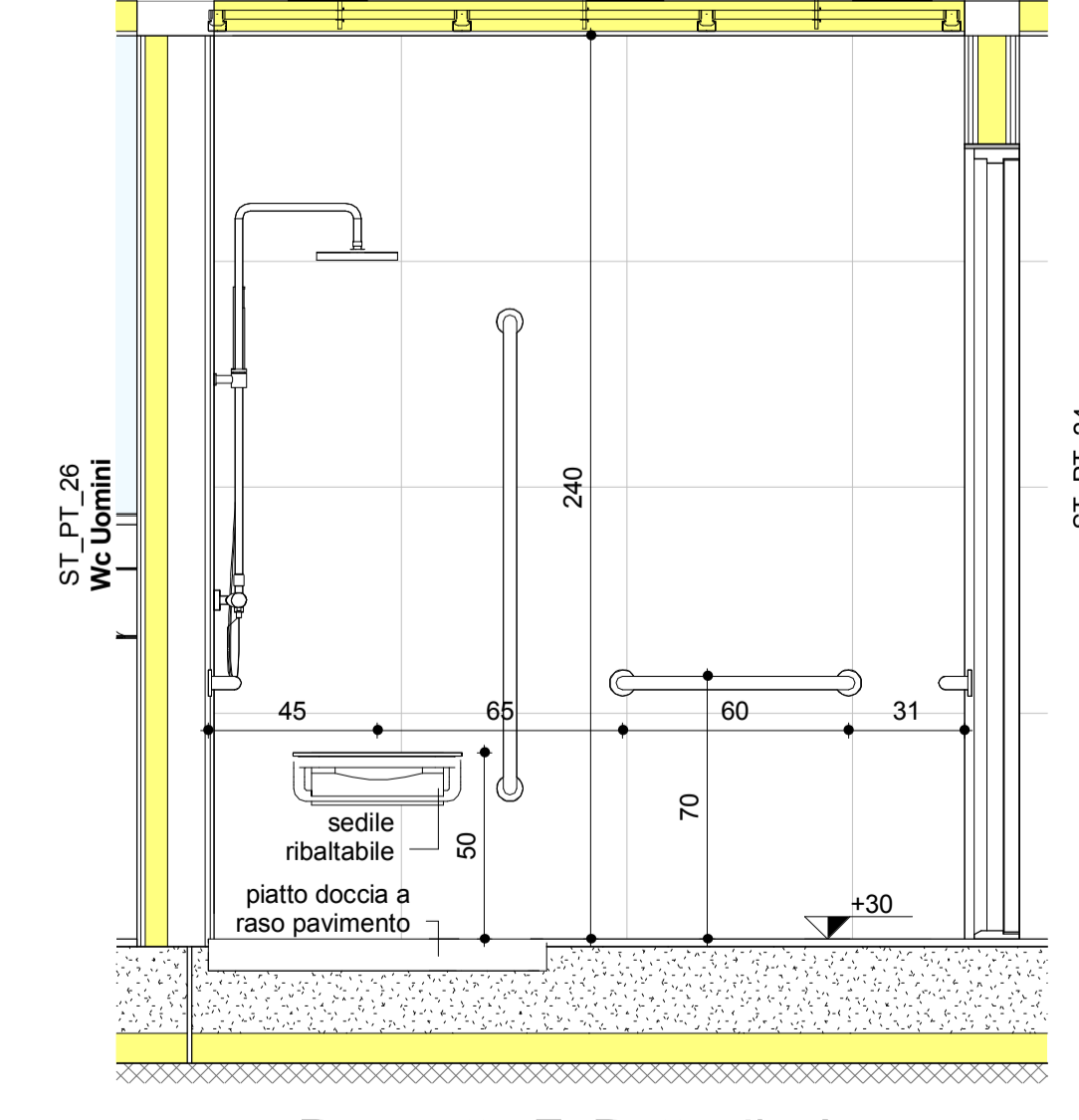
Prospetto C\_Dettaglio A  
1 : 20



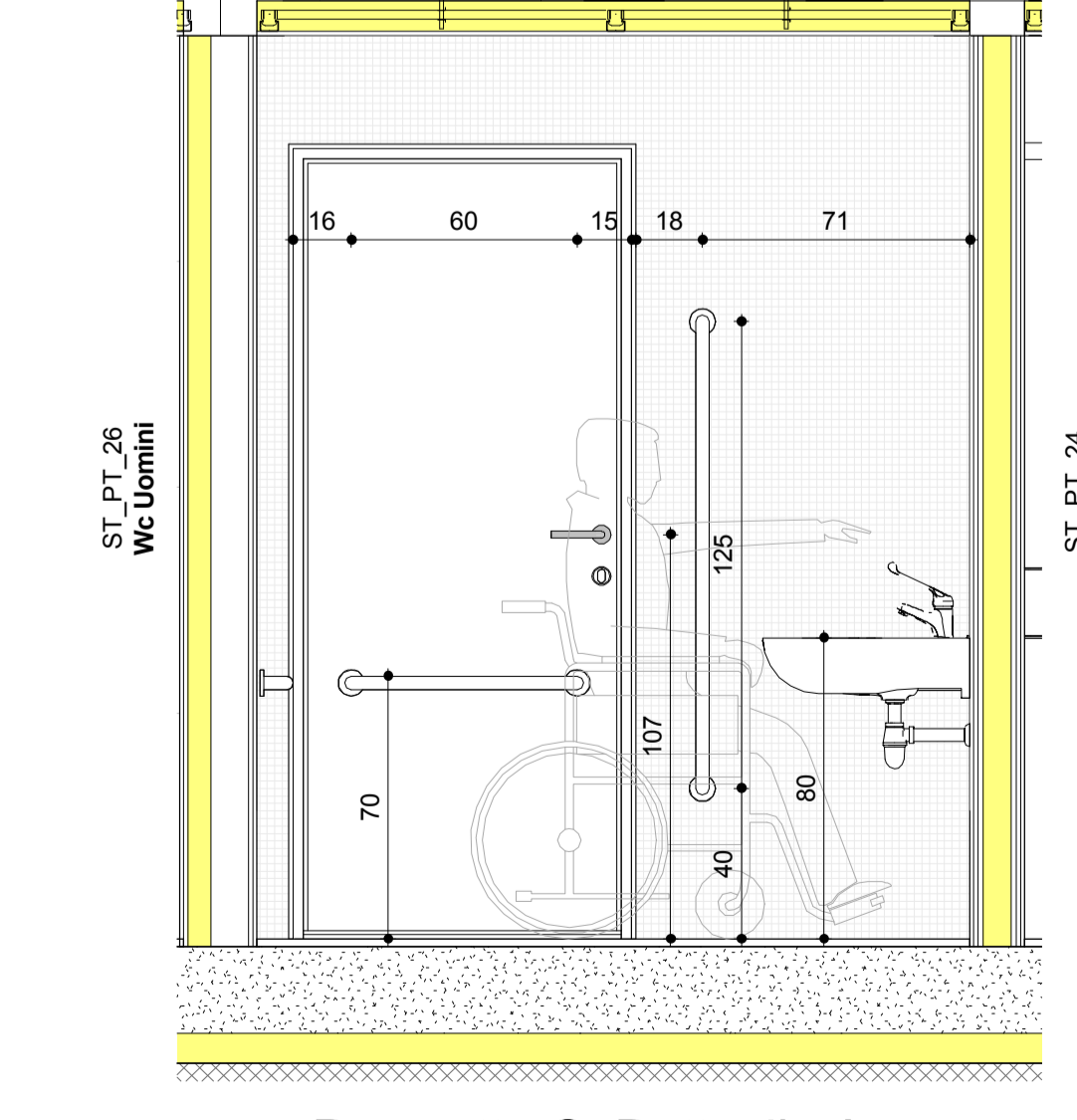
Prospetto D\_Dettaglio A  
1 : 20



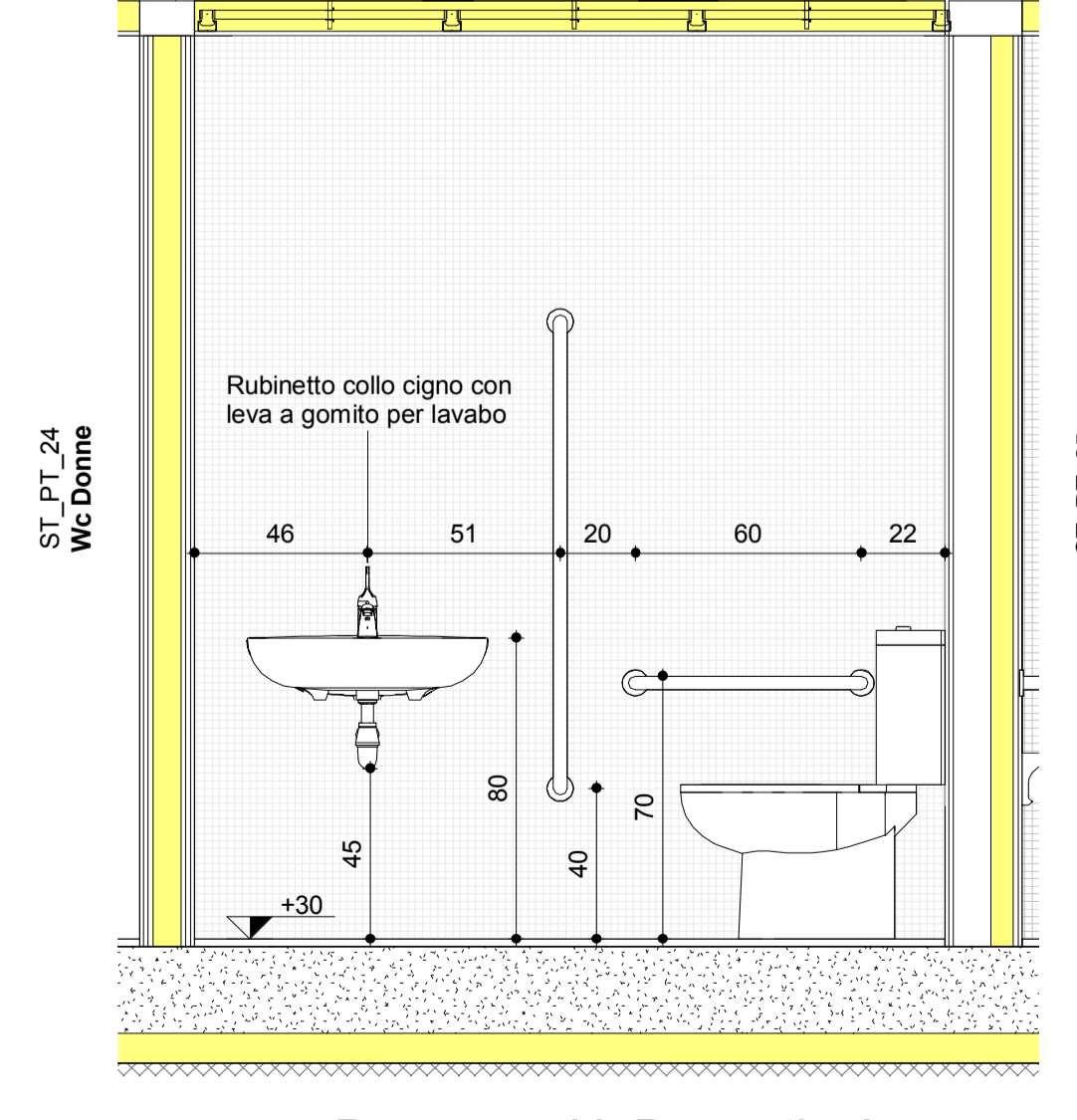
Prospetto E\_Dettaglio A  
1 : 20



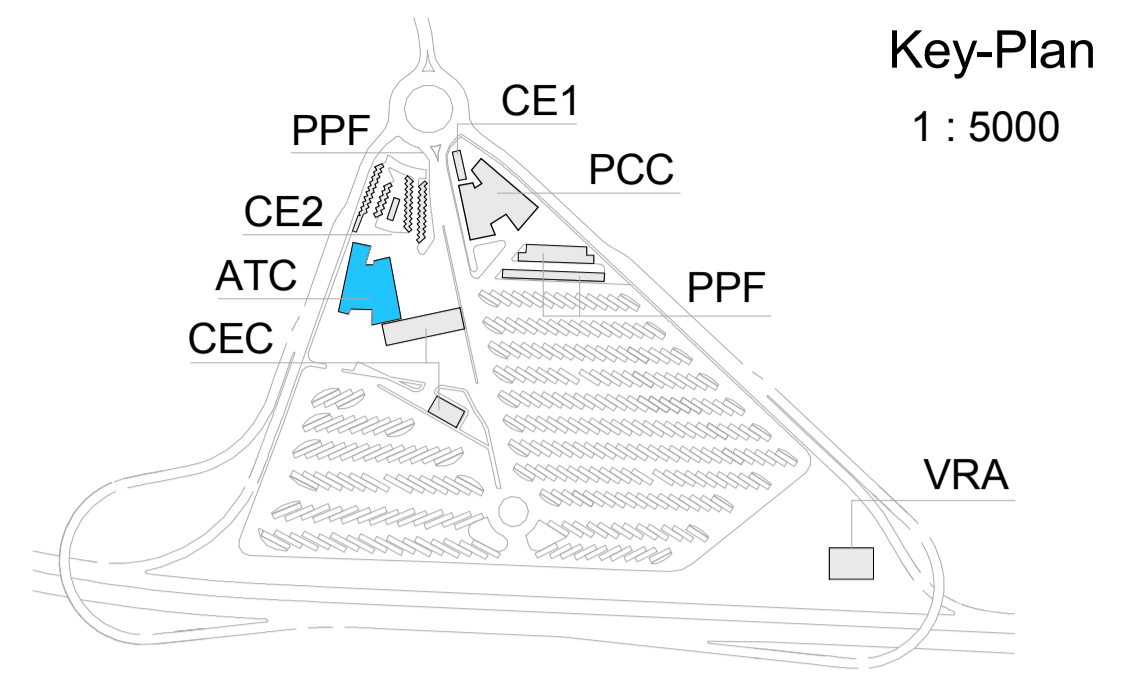
Prospetto F\_Dettaglio A  
1 : 20



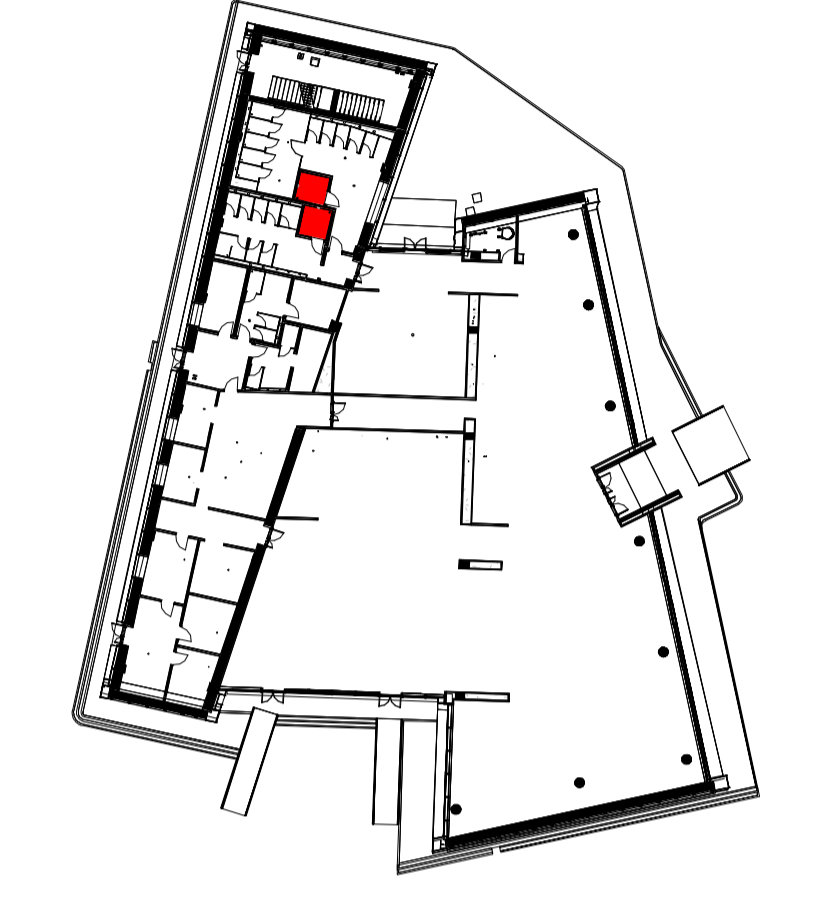
Prospetto G\_Dettaglio A  
1 : 20



Prospetto H\_Dettaglio A  
1 : 20



Key-Plan  
1 : 5000



A-L0 - Pianta Piano Terra  
1 : 500

**TAVOLE DI RIFERIMENTO**

Pianta quotata livello L0-Tav. 2	1_02C_C16167_FAA1_0_4_E_ST_PL_1603_B
Superamento delle barriere architettoniche L.13 - Pianta	1_02C_C16167_FAA0_0_G_E_ST_PL_1504_B




**NUOVA LINEA TORINO LIONE - NOUVELLE LIGNE LYON TURIN**  
**PORTE COMMUNE ITALO-FRANCESE - PARTIE COMMUNE FRANCO-ITALIENNE**

**LOTTO COSTRUTTIVO 1 / LOT DE CONSTRUCTION 1**  
**CANTIERE OPERATIVO 02C / CHANTIER DE CONSTRUCTION 02C**  
**RILOCALIZZAZIONE DELL'AUTOPORTO DI SUSA**  
**DEPLACEMENT DE L'AUTOPORTO DE SUSE**  
**PROGETTO ESECUTIVO - ETUDES D'EXECUTION**  
**CUP C11J05000030001 - CIG 682325367F**

**FABBRICATI GENERALI**  
**Superamento delle barriere architettoniche L.13 - Bagni**

Indice	Data / Data	Modificazioni / Modifiche	Elab. per / Concepito da	Verifica per / Controllato da	Autore / Autorizzato da
0	30/04/2018	Recupero istruttoria validazione RNA Check	O. PARRIS (MUSINET ENG.)	O. PARRIS (MUSINET ENG.)	L. BARBERIS (MUSINET ENG.)

**1 0 2 C C 1 6 1 6 7 F A A 1 0 G E S T P L 1 5 1 9 0**

<p>IL PROGETTISTA DESIGNER</p>  <p>Dir. Arch. Corrado GIOVANNETTI Alto di Torino W 278</p>	<p>L'IMPALTORE/ENTREPRENEUR</p> <p>SITAF spa</p>	<p>IL DIRETTORE DEI LAVORI LE MAÎTRE D'ŒUVRE</p>
-----------------------------------------------------------------------------------------------------------------------------------------------------------------------------------------	--------------------------------------------------	--------------------------------------------------





COD. FILE: PAA10G/ESTPL15190