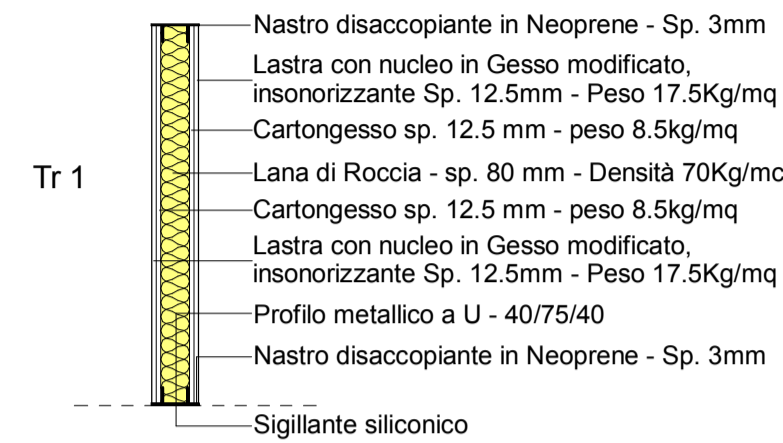


Pareti divisorie

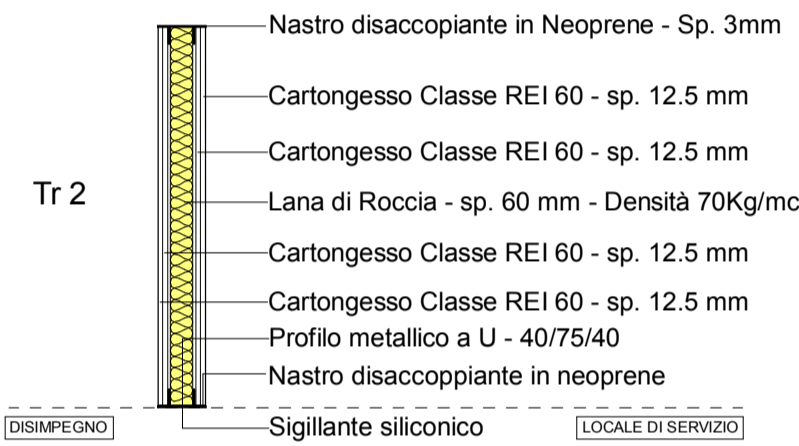
PARETE DIVISORIA TIPO Tr 1 - sp. 125 mm (A.P. 118)



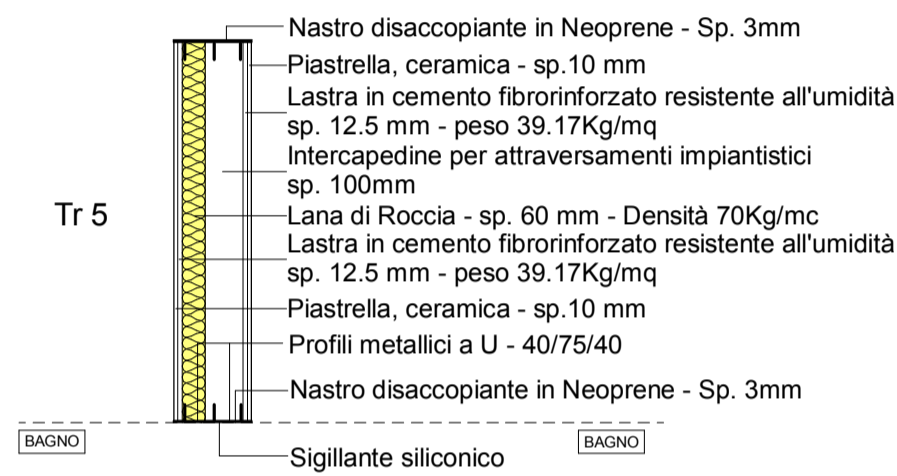
PARETE DIVISORIA TIPO Tr 4 RIVESTITA - Sp. 125+20 mm (A.P. 118)



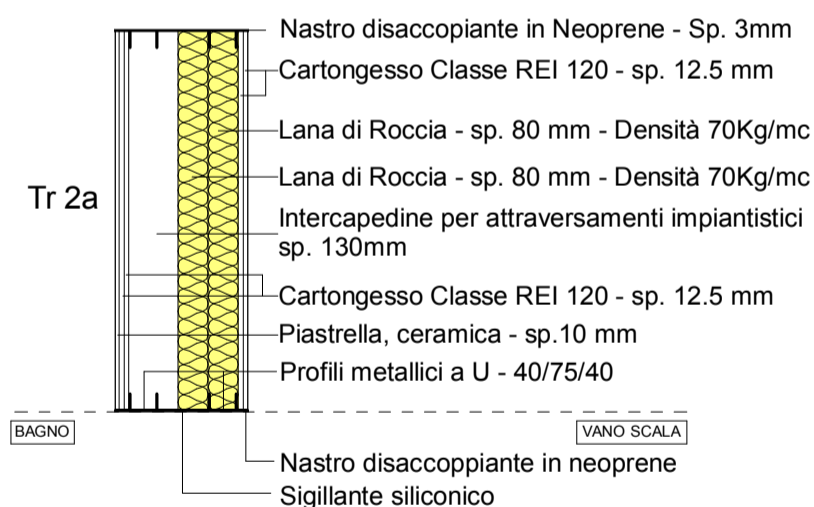
PARETE DIVISORIA TIPO Tr 2 CON CARATTERISTICA DI RESISTENZA AL FUOCO REI 60 - Sp. 125 mm (A.P. 145)



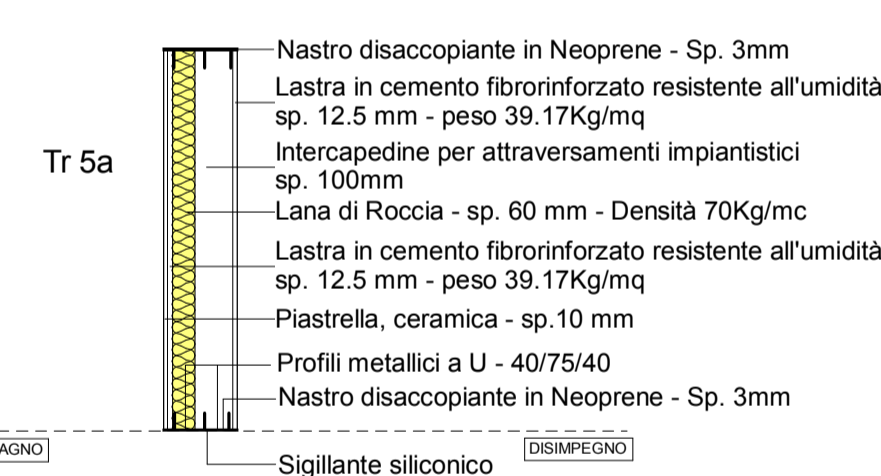
PARETE DIVISORIA TIPO Tr 5 CON INTERCAPEDINE PER ATTRAVERSAMENTI IMPIANTISTICI RIVESTITA - Sp. 185+20 mm (A.P. 122)



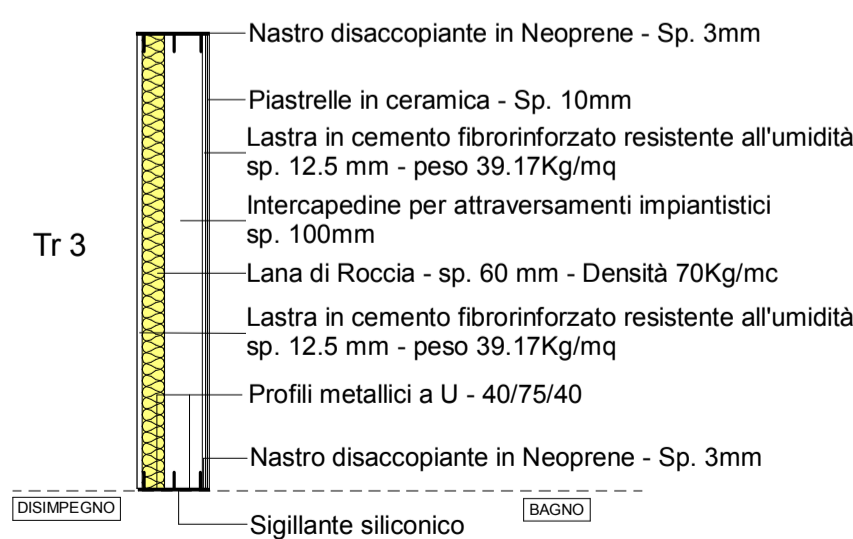
PARETE DIVISORIA TIPO Tr 2a CON CARATTERISTICA DI RESISTENZA AL FUOCO REI 120 - Sp. 340+10 mm (A.P. 146)



PARETE DIVISORIA TIPO Tr 5a CON INTERCAPEDINE PER ATTRAVERSAMENTI IMPIANTISTICI RIVESTITA - Sp. 185+10 mm (A.P. 122)



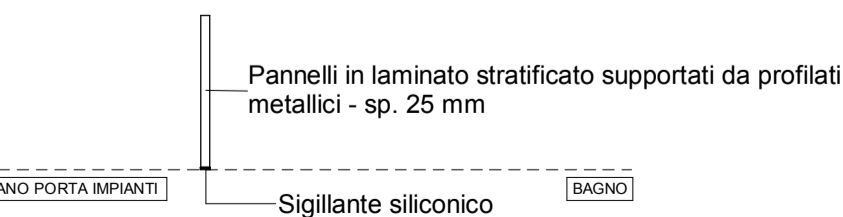
PARETE DIVISORIA TIPO Tr 3 CON INTERCAPEDINE PER ATTRAVERSAMENTI IMPIANTISTICI - Sp. 175+10 mm (A.P. 122)



PARETE DIVISORIA TIPO Tr 5b CON INTERCAPEDINE PER ATTRAVERSAMENTI IMPIANTISTICI RIVESTITA - Sp. 185+10 mm (A.P. 122)

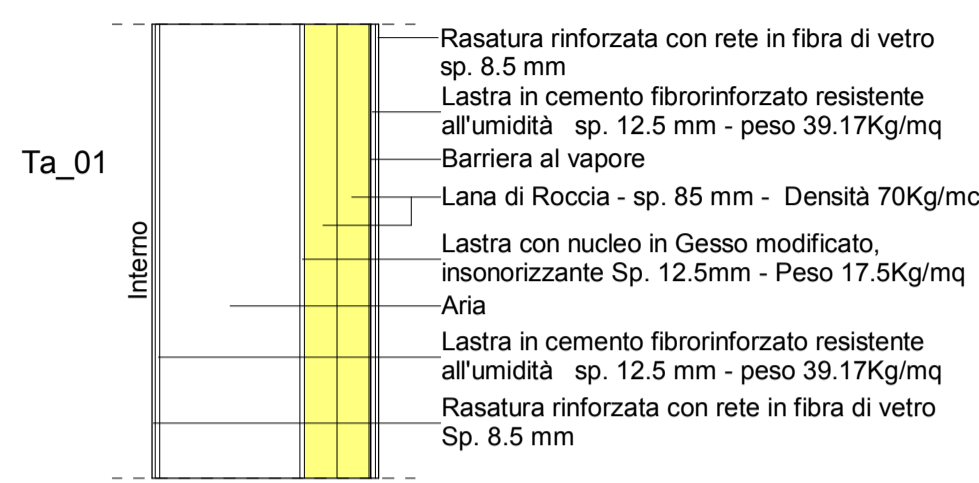


PARETE DIVISORIA TIPO Tr 6 IN LAMINATO STRATIFICATO Sp. 25 mm

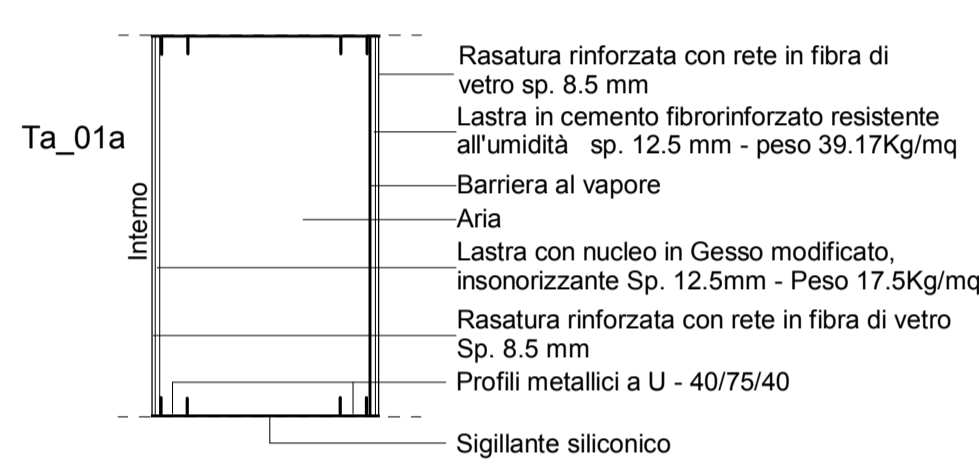


Tamponature

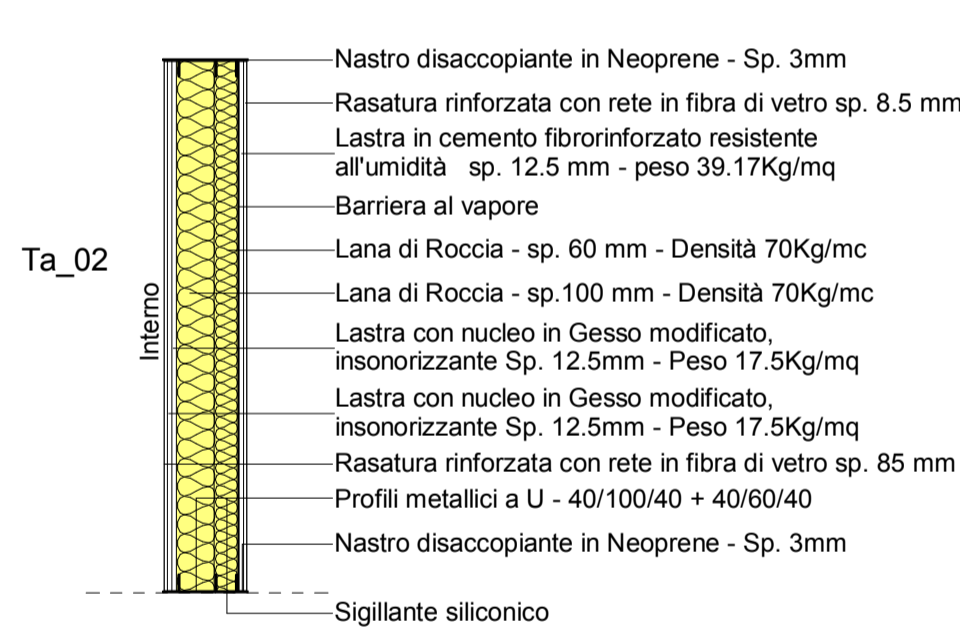
Ta_01 - Parete con pannelli a secco, sottostruttura metallica e intercapedine Sp. 600 mm (A.P. 149)



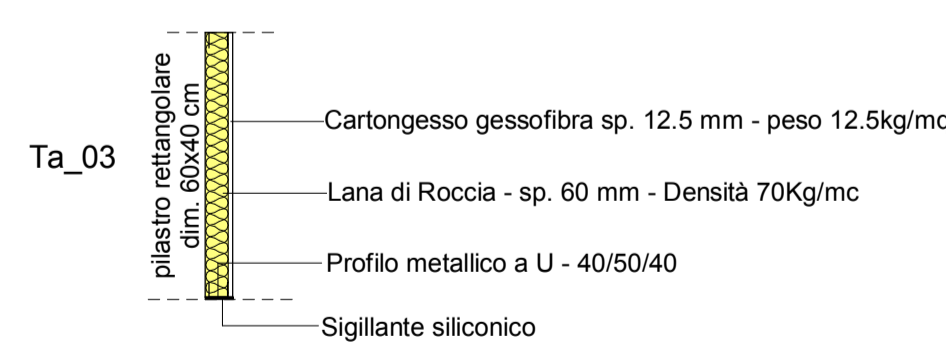
Ta_01a - Parete con pannelli a secco, sottostruttura metallica - sp. 600 mm (A.P. 119)



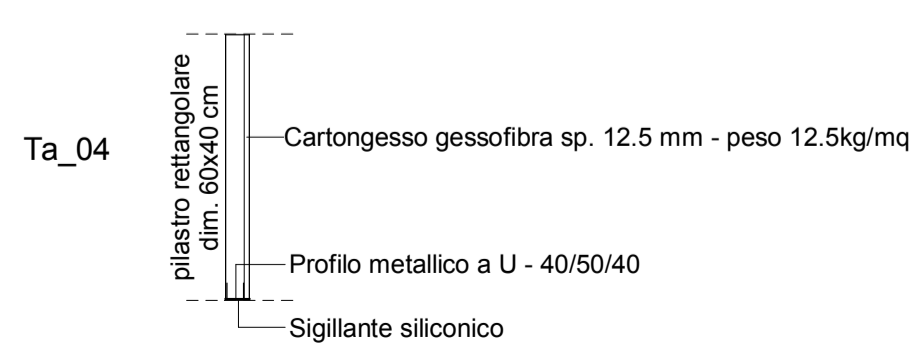
Ta_02 - Parete con pannelli a secco, sottostruttura metallica - sp. 219.5 mm (A.P. 150)



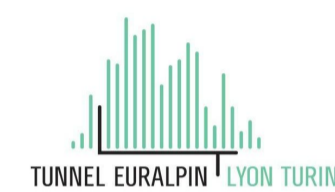
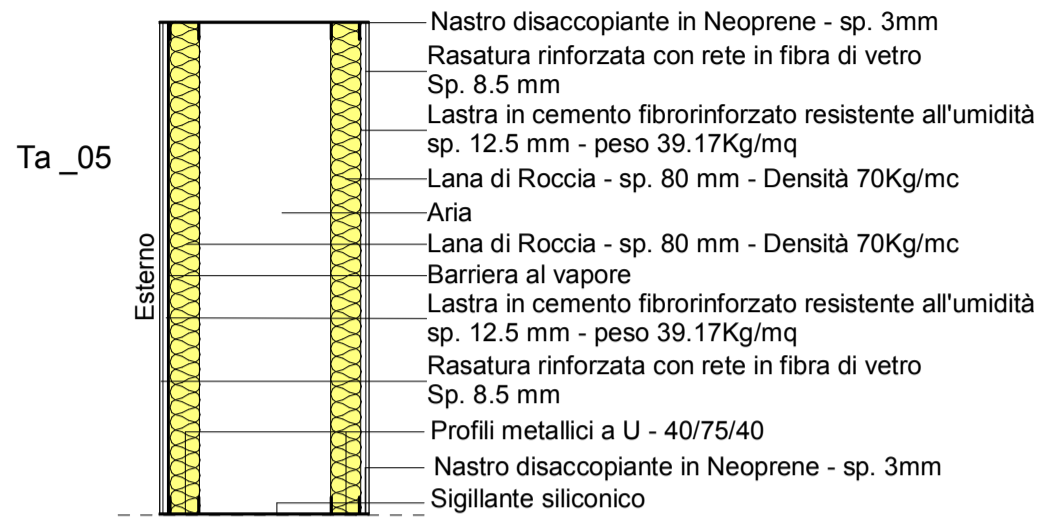
Ta_03 - Rivestimento pilastri prefabbricati rettangolari - sp. 72.5 mm (A.P. 151)



Ta_04 - Rivestimento pilastri prefabbricati rettangolari senza isolante - sp. 62.5 mm (A.P. 151)



PARETE DIVISORIA TIPO Ta_05 CON POTERE FONOISOLANTE Sp. 554 mm (A.P. 154)



NUOVA LINEA TORINO LIONE - NOUVELLE LIGNE LYON TURIN
PARTE COMUNE ITALO-FRANCESE - PARTIE COMMUNE FRANCO-ITALIENNE

LOTTO COSTRUTTIVO 1 / LOT DE CONSTRUCTION 1
CANTIERE OPERATIVO 02C / CHANTIER DE CONSTRUCTION 02C
RILOCALIZZAZIONE DELL'AUTOPORTO DI SUSA
DEPLACEMENT DE L'AUTOPORTO DE SUSE
PROGETTO ESECUTIVO - ETUDES D'EXECUTION
CUP C11J05000030001 - CIG 682325367F

FABBRICATI
ATC - STAZIONE DI SERVIZIO E AREA CARBURANTI
DETTAGLI INVOLUCRI E PARTIZIONI

Indice	Date / Data	Modifications / Modifiche	Etabli par / Conception da	Vérifié par / Contrôlé da	Autorisé par / Autorizzato da
0	30/04/2018	Recepimento istruttoria validazione RINA Check	O. PARISI (MUSINET ENG.)	O. PARISI (MUSINET ENG.)	L. BARBERIS (MUSINET ENG.)

1 0 2 C C 1 6 1 6 7 F A A 1 O 4	E S T P L 1 6 3 2 0									
Lot Con. / Lieu Con.	Chantier de construction	Contratto/Contrat	Opera/Oeuvre	Tratto / Tronçon	Parte / Partie	Fase / Phase	Tipo documento / Type de document	Oggetto / Object	Numero documento / Numero de document	Indice / Index

--	--	--	--	--	--	--	--	--	--	--

IL PROGETTISTA/LE DESIGNER

Dott. Arch. Corrado GIOVANNETTI
Albo di Torino
N° 2736

L'APPALTA TORE/L'ENTREPRENEUR

IL DIRETTORE DEI LAVORI/LE MAÎTRE D'ŒUVRE

