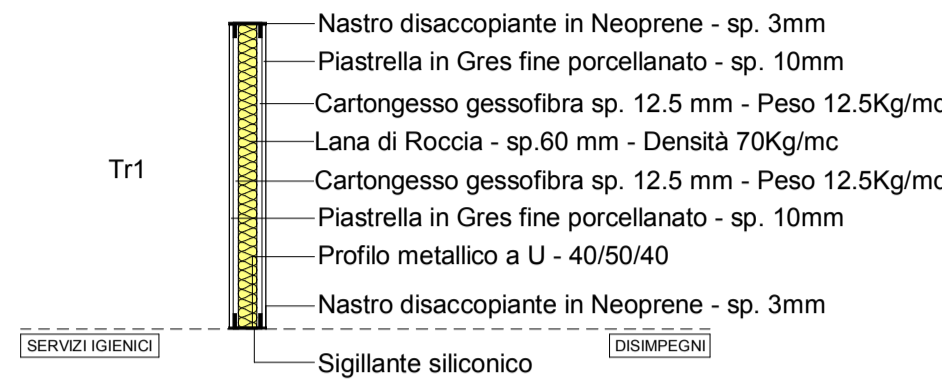
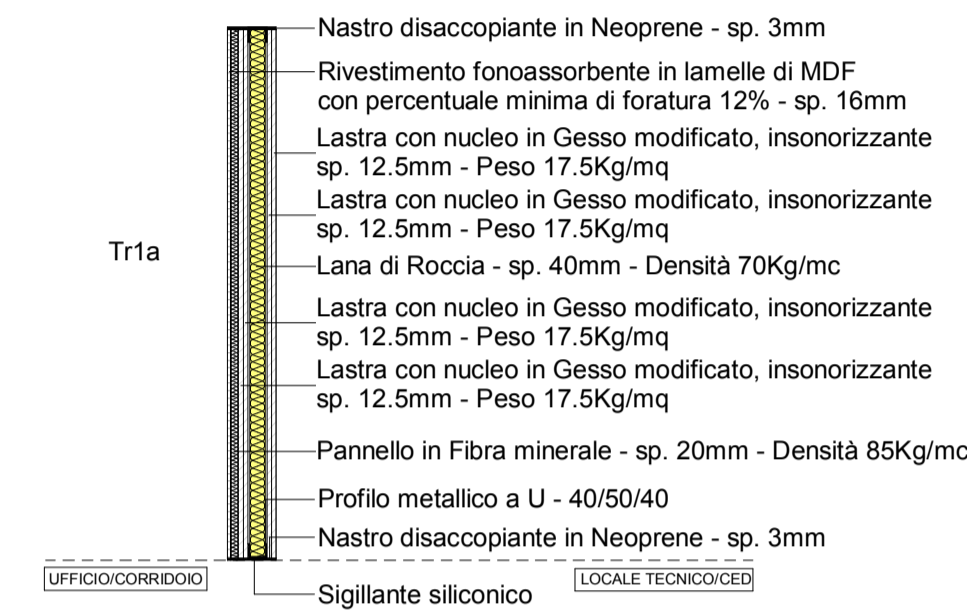


Pareti divisorie

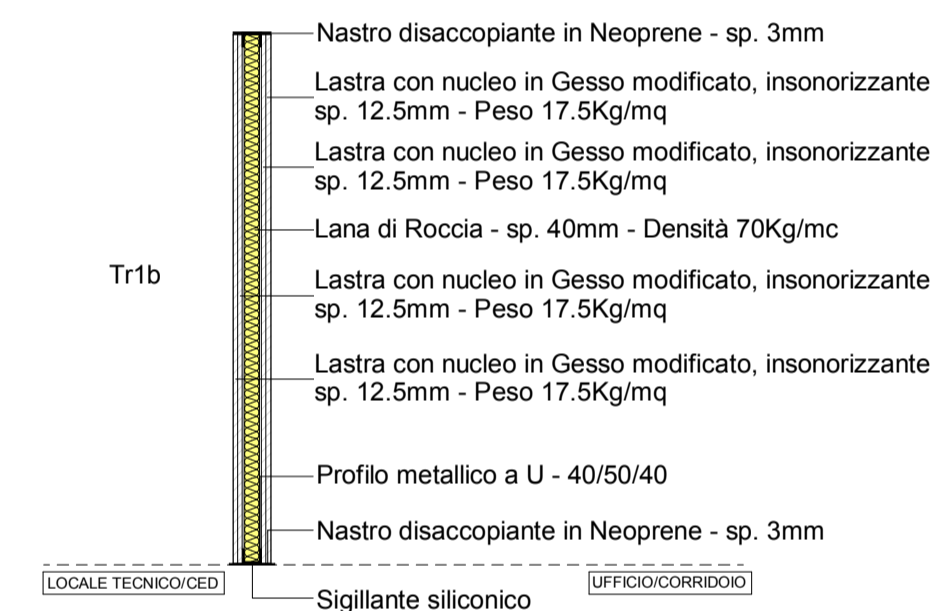
PARETE DIVISORIA TIPO Tr 1 SENZA RIVESTIMENTO FONOASSORBENTE
sp. 75+20mm (A.P. 148)



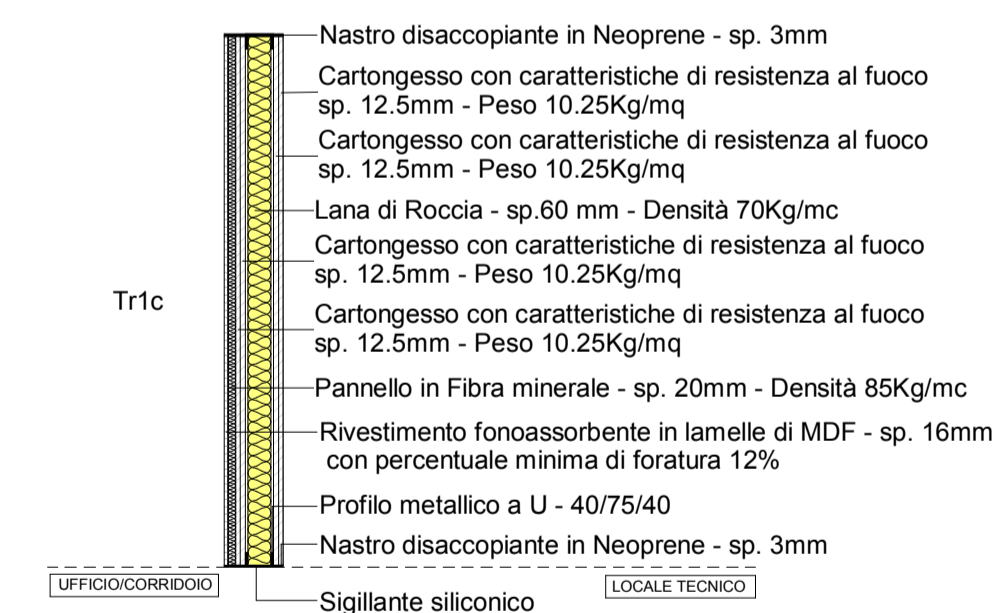
PARETE DIVISORIA TIPO Tr 1a CON RIVESTIMENTO FONOASSORBENTE
sp. 100+36mm (A.P. 116)



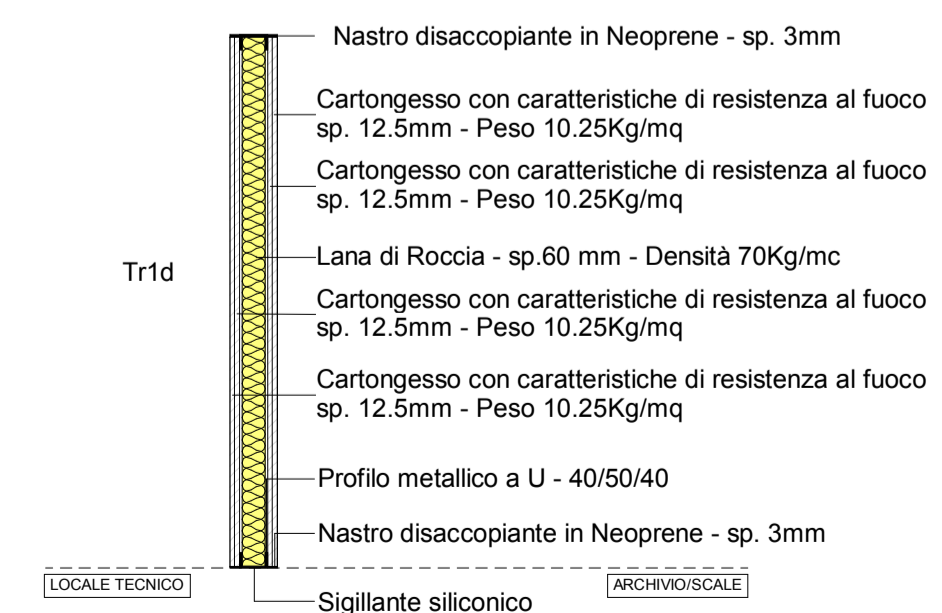
PARETE DIVISORIA TIPO Tr 1b SENZA RIVESTIMENTO FONOASSORBENTE
sp. 100mm (A.P. 116)



PARETE DIVISORIA TIPO Tr 1c CON RIVESTIMENTO FONOASSORBENTE E CARATTERISTICA DI RESISTENZA AL FUOCO REI 120
sp. 125+36mm (A.P. 117)



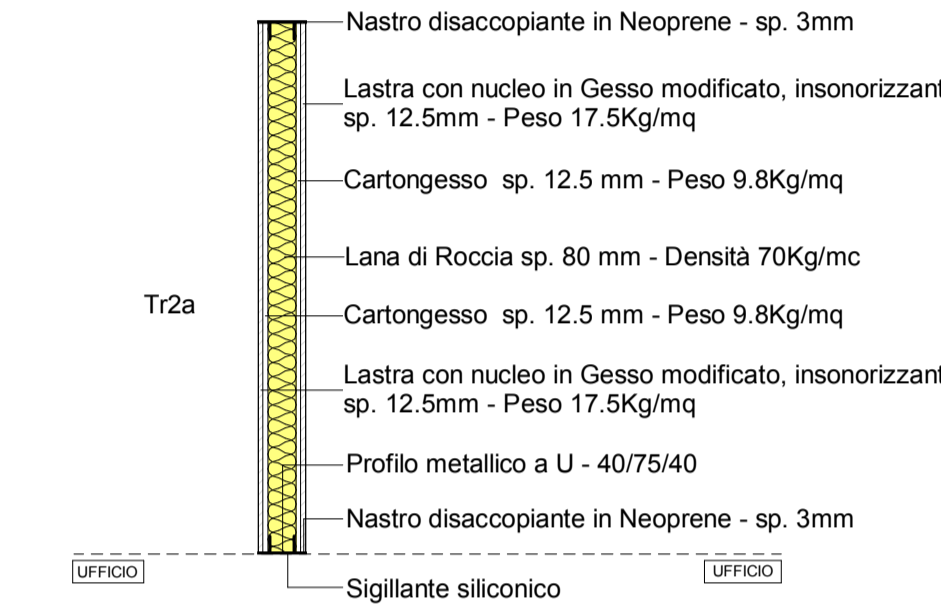
PARETE DIVISORIA TIPO Tr 1d SENZA RIVESTIMENTO FONOASSORBENTE E CARATTERISTICA DI RESISTENZA AL FUOCO REI 120
sp. 125mm (A.P. 117)



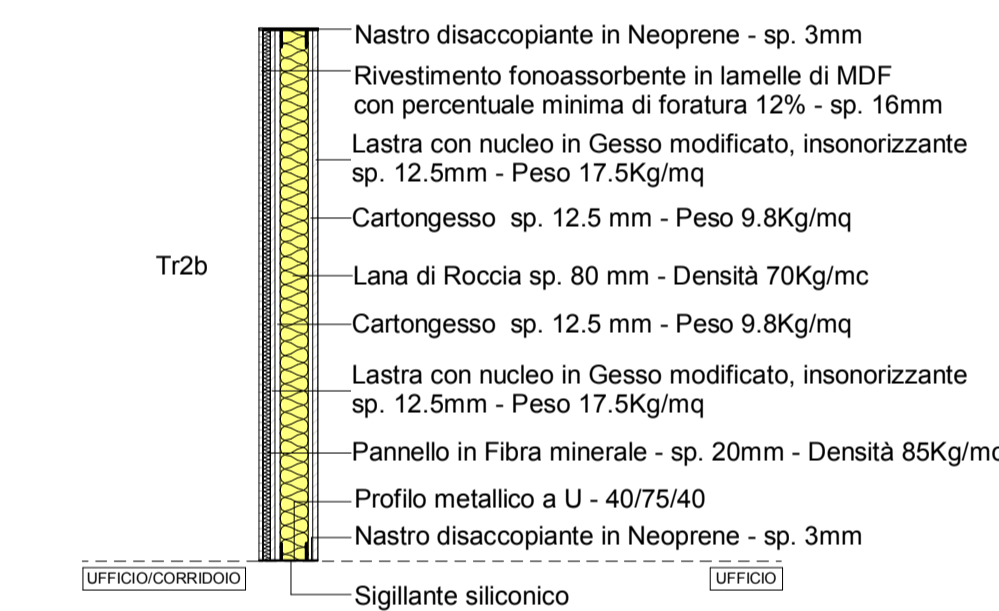
PARETE DIVISORIA TIPO Tr 1e SENZA RIVESTIMENTO FONOASSORBENTE E CARATTERISTICA DI RESISTENZA AL FUOCO REI 120
sp. 210mm (A.P. 117)



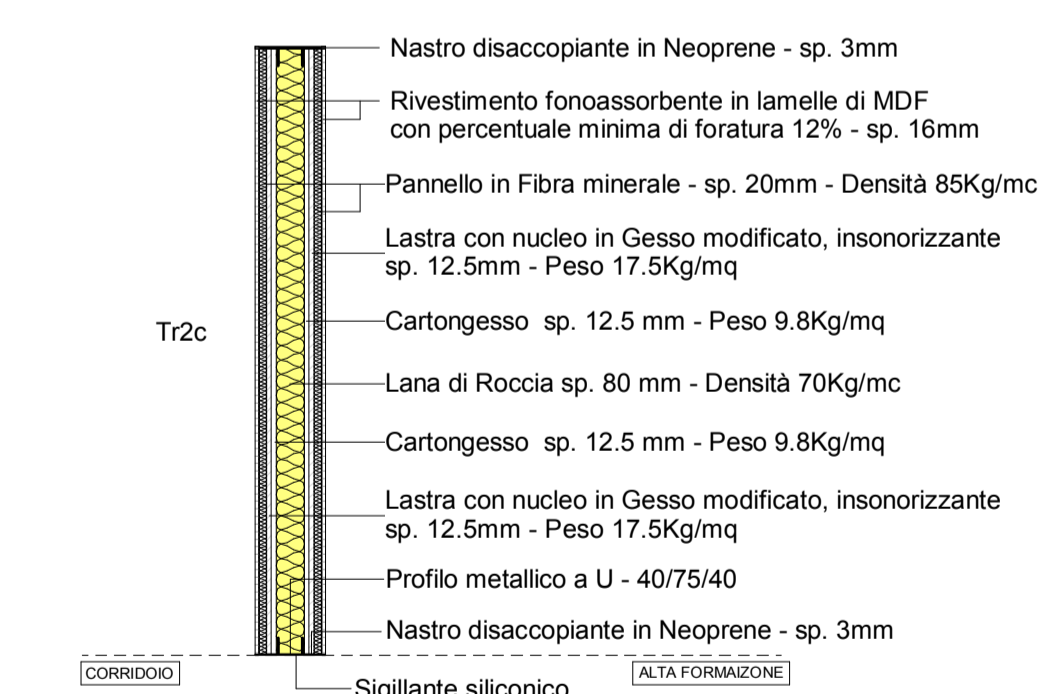
PARETE DIVISORIA TIPO Tr 2a SENZA RIVESTIMENTO FONOASSORBENTE
sp. 125mm (A.P. 118)



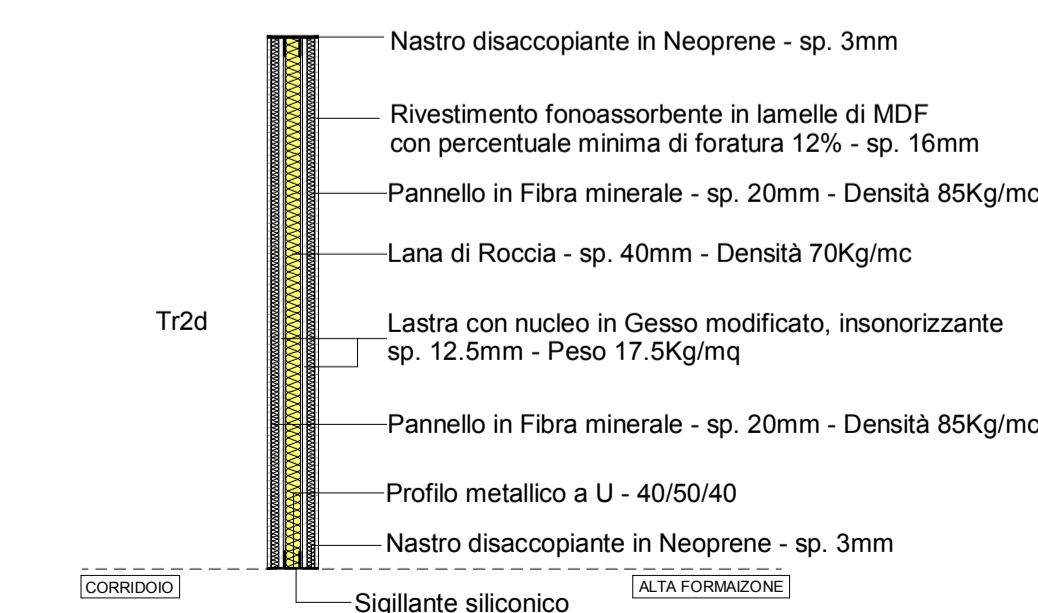
PARETE DIVISORIA TIPO Tr 2b CON RIVESTIMENTO FONOASSORBENTE
sp. 125+36mm (A.P. 118)



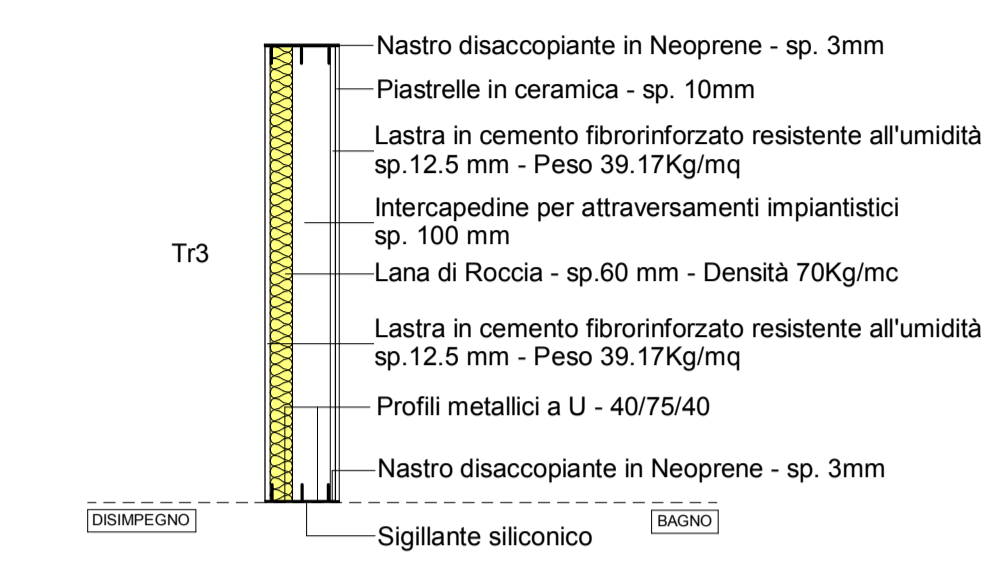
PARETE DIVISORIA TIPO Tr 2c CON RIVESTIMENTO FONOASSORBENTE
sp. 125+36+36mm (A.P. 118)



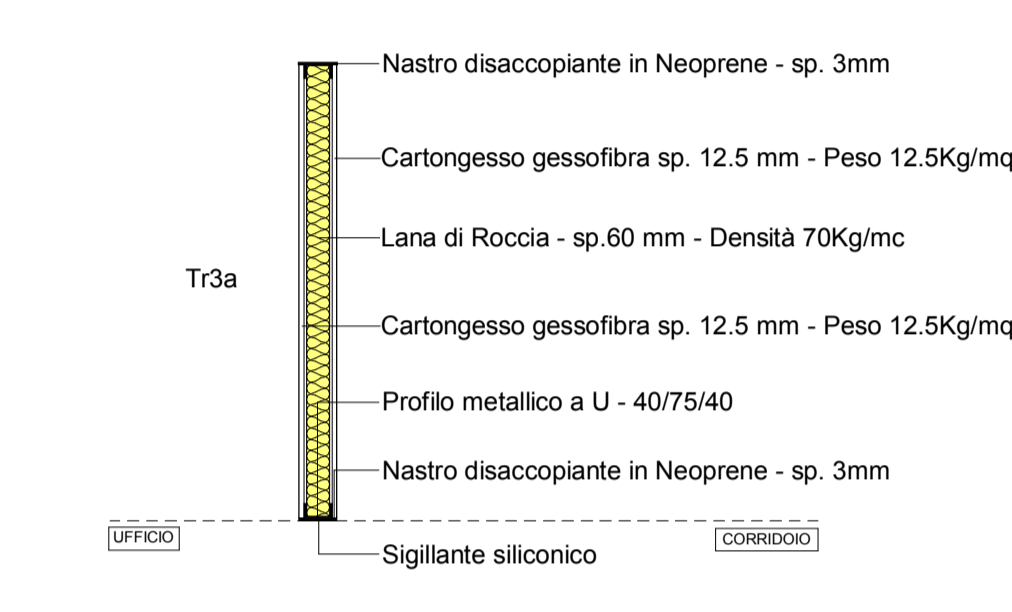
PARETE DIVISORIA TIPO Tr 2d CON RIVESTIMENTO FONOASSORBENTE
sp. 75+36+36mm (A.P. 118)



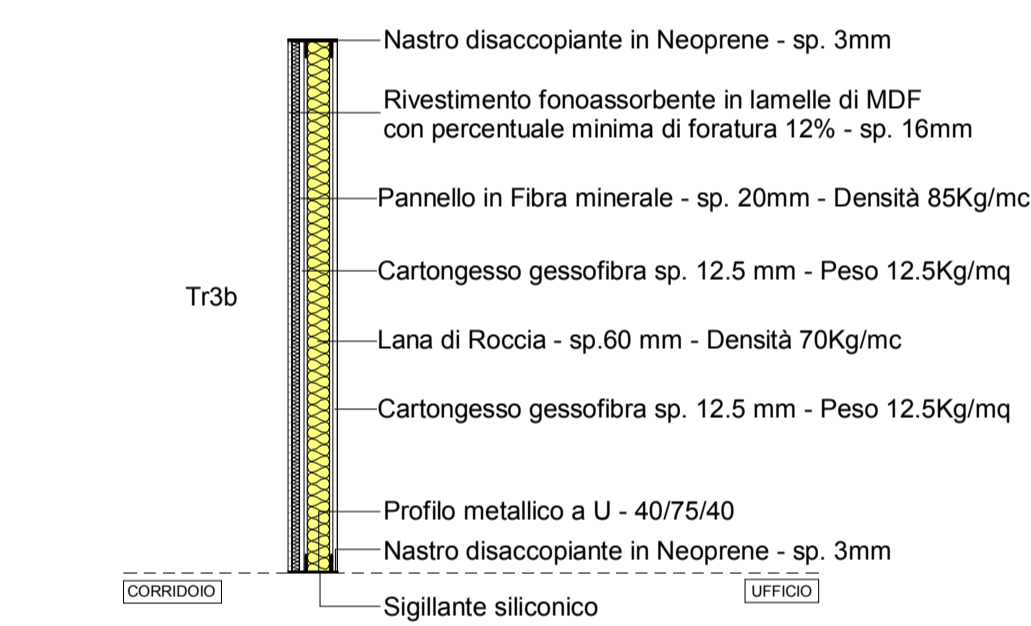
PARETE DIVISORIA TIPO Tr 3 CON INTERCAPEDINE PER ATTRAVERSAMENTI IMPIANTISTICI
sp. 175+10mm (A.P. 122)



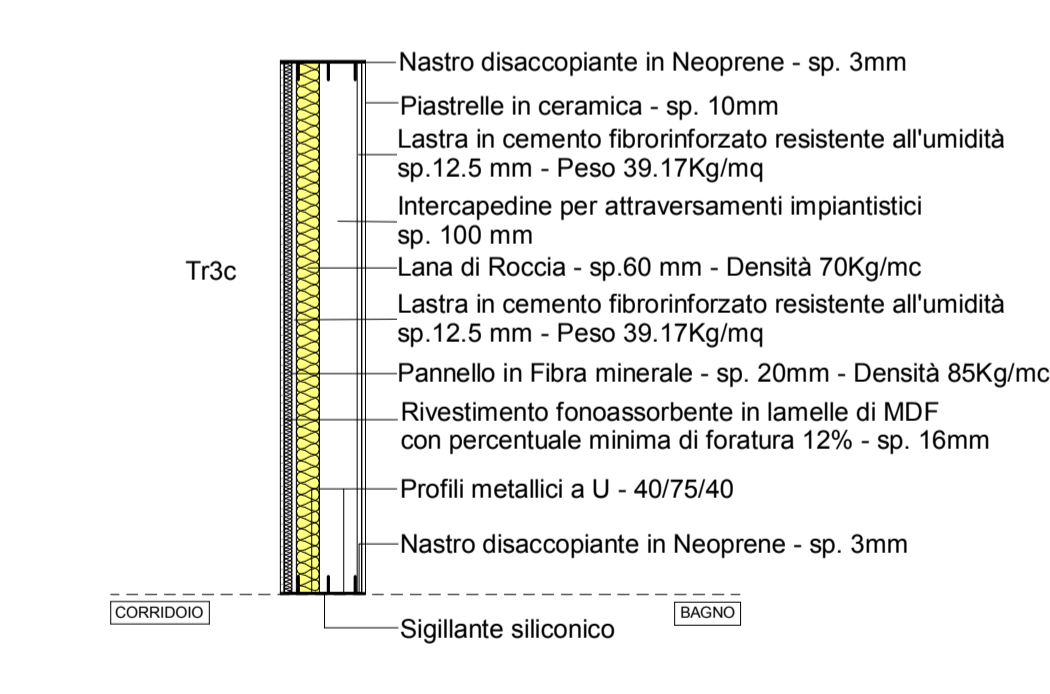
PARETE DIVISORIA TIPO Tr 3a SENZA RIVESTIMENTO FONOASSORBENTE
sp. 100mm (A.P. 115)



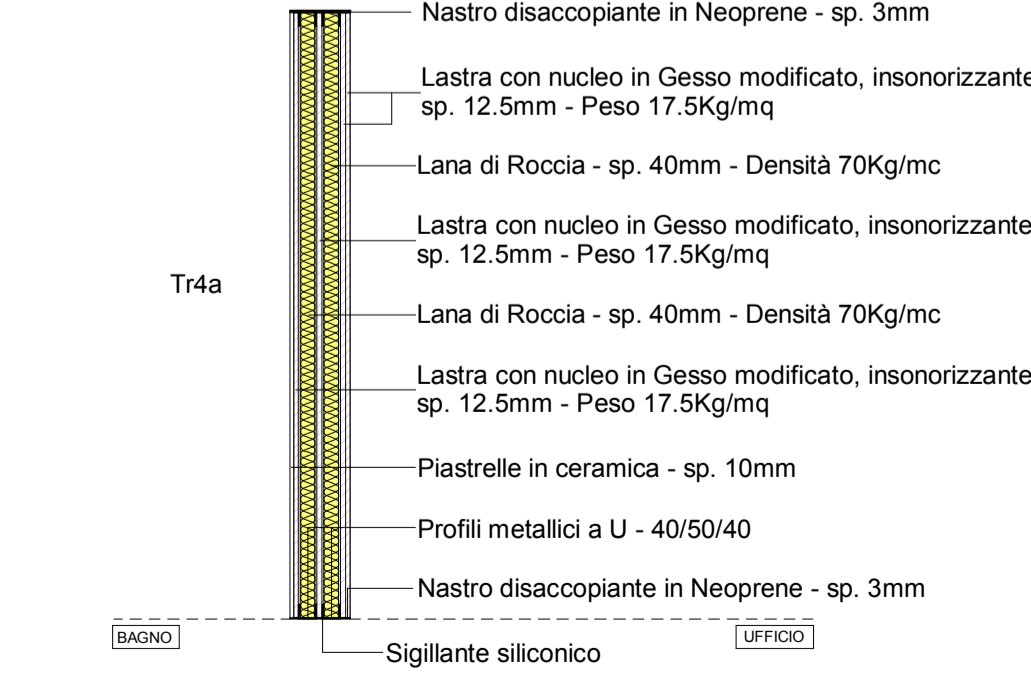
PARETE DIVISORIA TIPO Tr 3b CON RIVESTIMENTO FONOASSORBENTE E
sp. 100+36mm (A.P. 115)



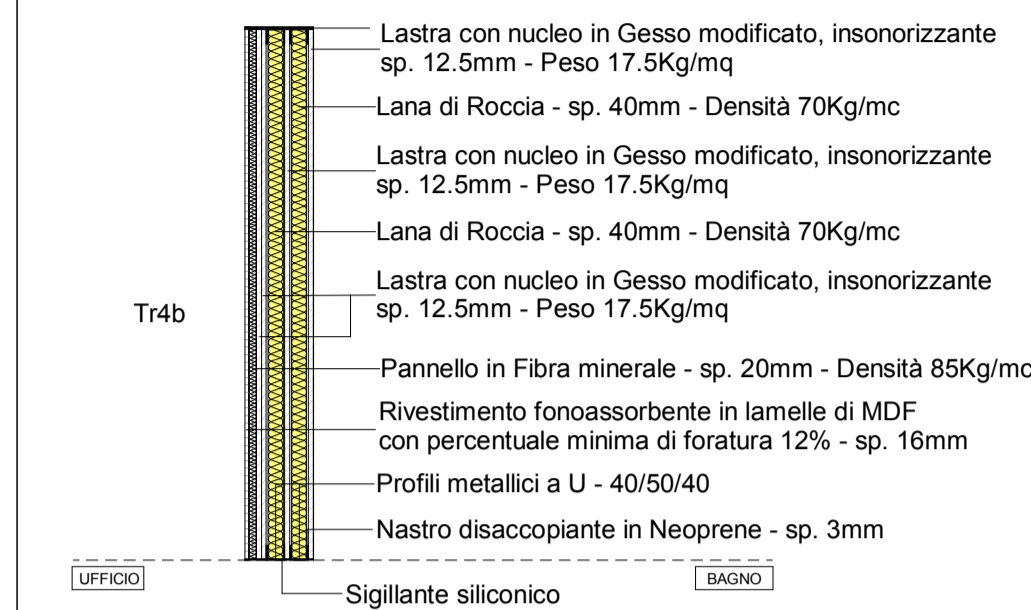
PARETE DIVISORIA TIPO Tr 3c CON INTERCAPEDINE PER ATTRAVERSAMENTI IMPIANTISTICI E RIVESTIMENTO FONOASSORBENTE
sp. 175+36+10mm (A.P. 122)



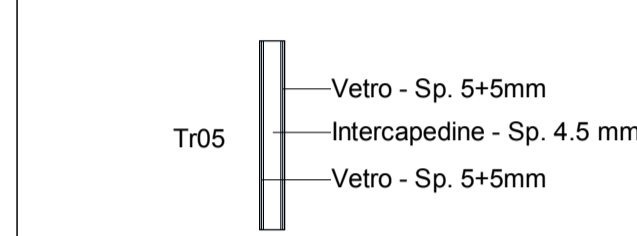
PARETE DIVISORIA TIPO Tr 4a SENZA RIVESTIMENTO FONOASSORBENTE
sp. 150+10mm (A.P. 147)



PARETE DIVISORIA TIPO Tr 4b CON RIVESTIMENTO FONOASSORBENTE
sp. 150+36mm (A.P. 147)



PARETE DIVISORIA TIPO Tr 05 VETRATA
sp. 65mm (A.P. 123)

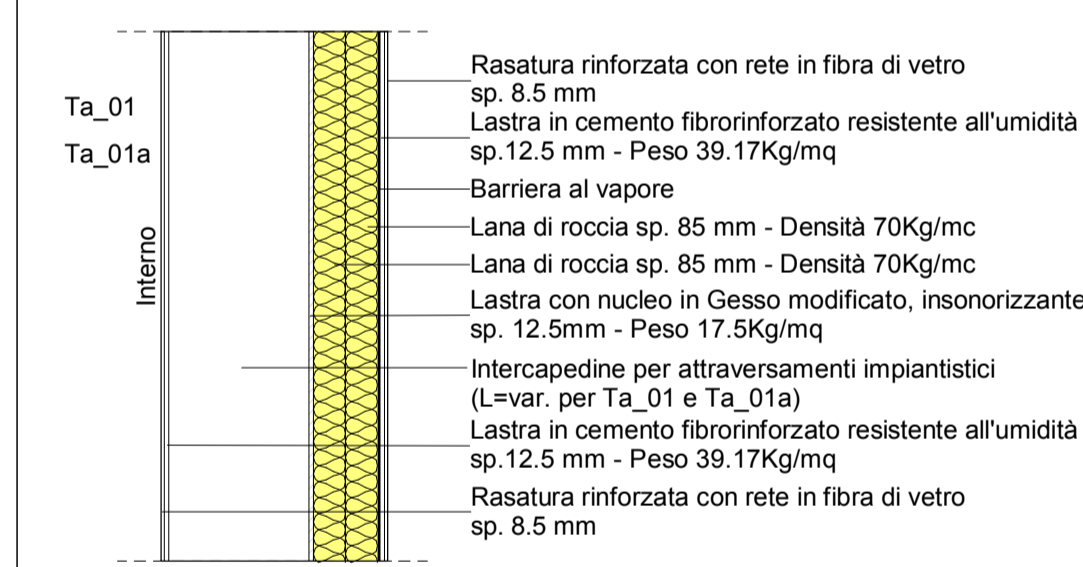


PARETE DIVISORIA TIPO Tr 06
sp. 25mm

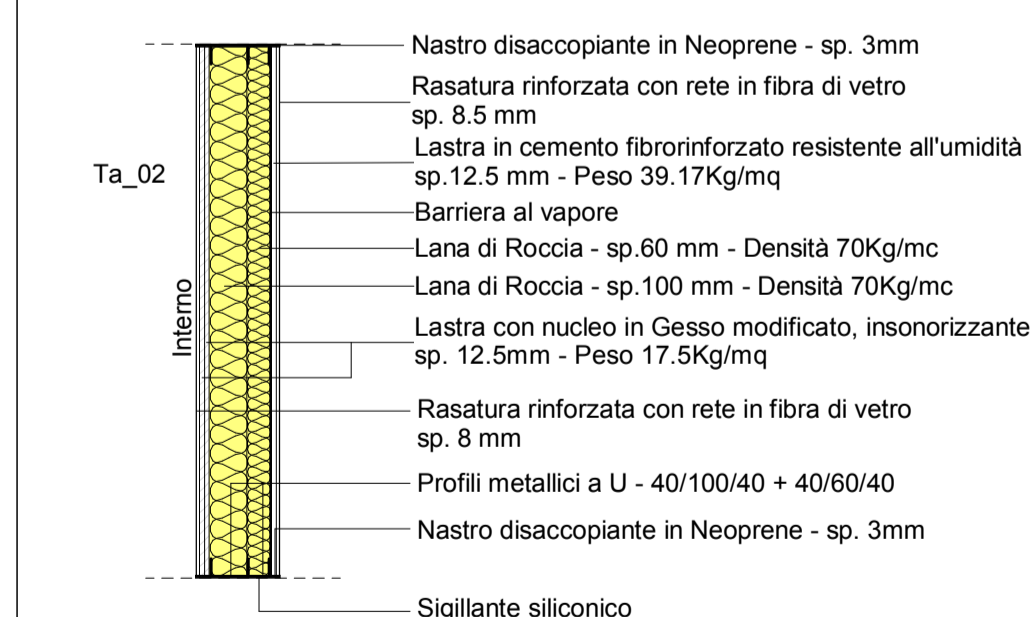


Tamponature

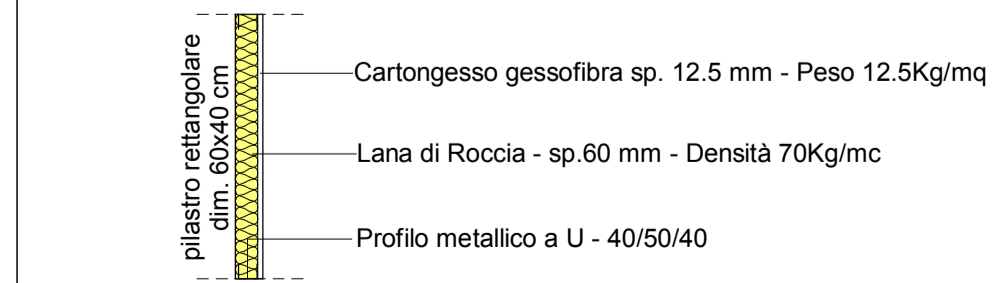
Ta_01 - Ta_01a - Parete con pannelli a secco, sottostruttura metallica e intercapedine - Ta_01 sp. 600 mm - Ta_01a sp. 323 mm (A.P. 149)



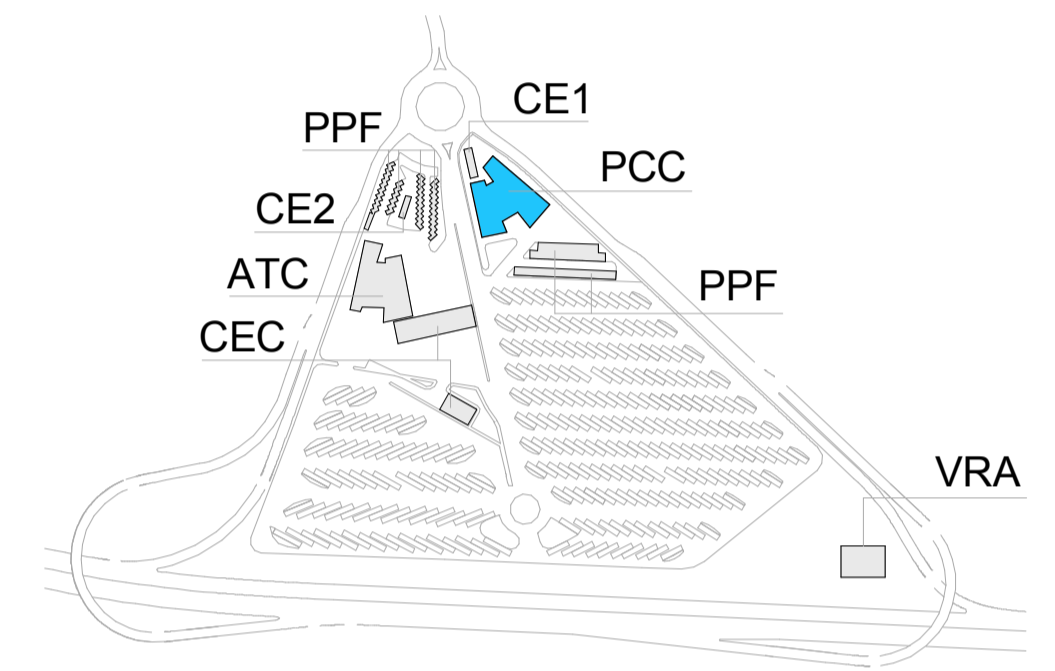
Ta_02 - Parete con pannelli a secco, sottostruttura metallica - sp. 219.5 mm (A.P. 150)



Ta_04 - Rivestimento pilastri prefabbricati rettangolari - sp. 72.5 mm (A.P. 151a)



Key-Plan
1 : 5000



NUOVA LINEA TORINO LIONE - NOUVELLE LIGNE LYON TURIN
PARTE COMUNE ITALO-FRANCESE - PARTIE COMMUNE FRANCO-ITALIENNE

LOTTO COSTRUTTIVO 1 /LOT DE CONSTRUCTION 1
CANTIERE OPERATIVO 02C /CHANTIER DE CONSTRUCTION 02C
RILOCALIZZAZIONE DELL'AUTOPORTO DI SUSA
DEPLACEMENT DE L'AUTOPORTO DE SUSE
PROGETTO ESECUTIVO - ETUDES DIEXECUTION
CUP C11J05000030001 - CIG 68232567F

FABBRICATI
PCC - POSTO CONTROLLO CENTRALIZZATO
DETTAGLI INVOLUCRI E PARTIZIONI

Indice	Data / Data	Modificazioni / Modifiche	Elab. per / Concepito da	Verifica per / Controllato da	Autorizz. per / Autorizzato da
0	30/04/2018	Recupero istruttoria validazione RNA Check	O. PARRIS (MUSINET ENG.)	O. PARRIS (MUSINET ENG.)	L. BARBERIS (MUSINET ENG.)

1	0	2	C	C	1	6	1	6	7	F	A	2	0	4
---	---	---	---	---	---	---	---	---	---	---	---	---	---	---

SCALA / ECHELLE														
-----------------	--	--	--	--	--	--	--	--	--	--	--	--	--	--

IL PROGETTISTA DESIGNER Dott. Arch. Corrado GIOVANNETTI Alto di Torino N° 2736	L'APPALTATORE/ENTREPRENEUR	IL DIRETTORE DEI LAVORI LA MAÎTRE D'OUVRE
---	----------------------------	---

