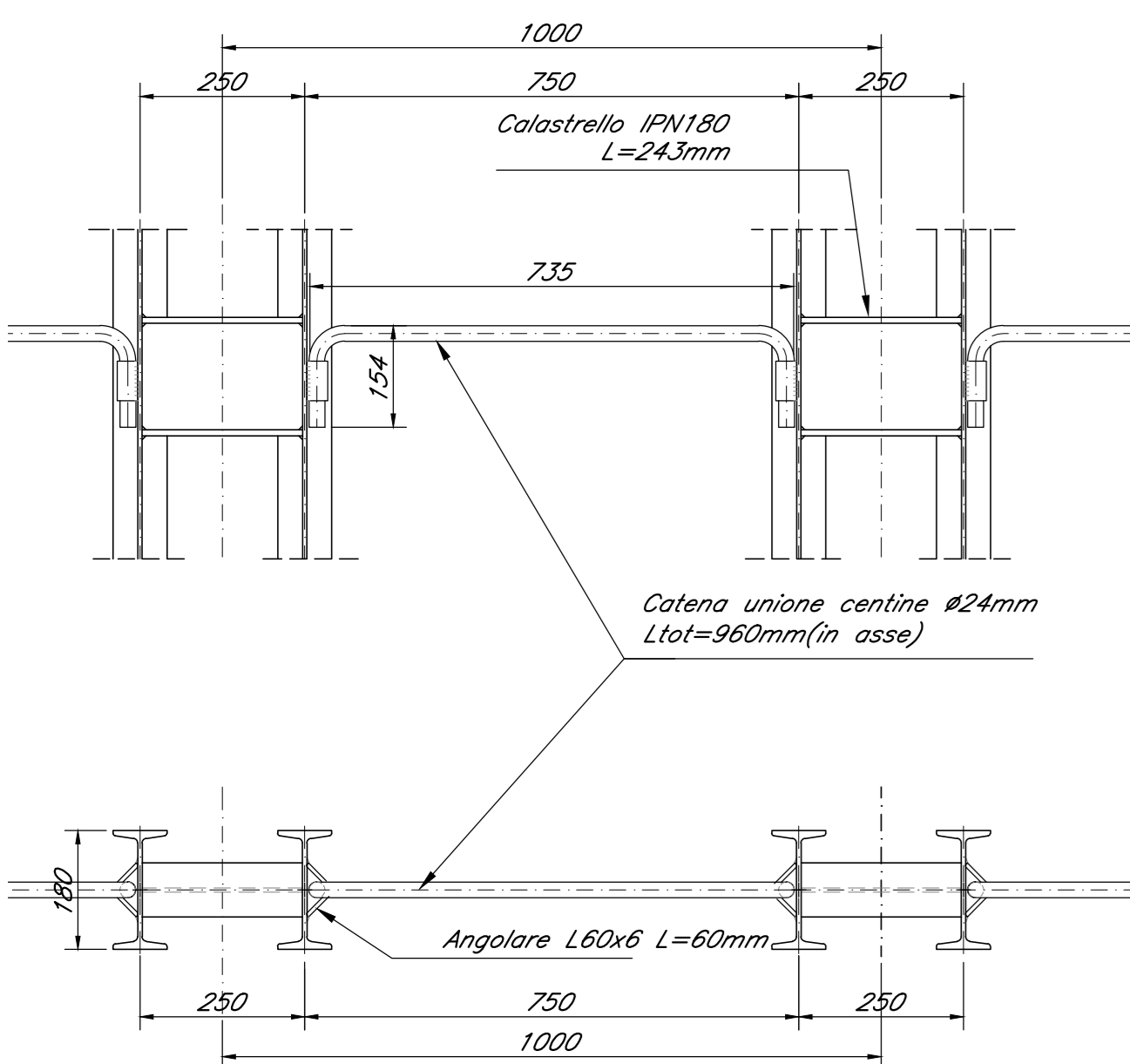
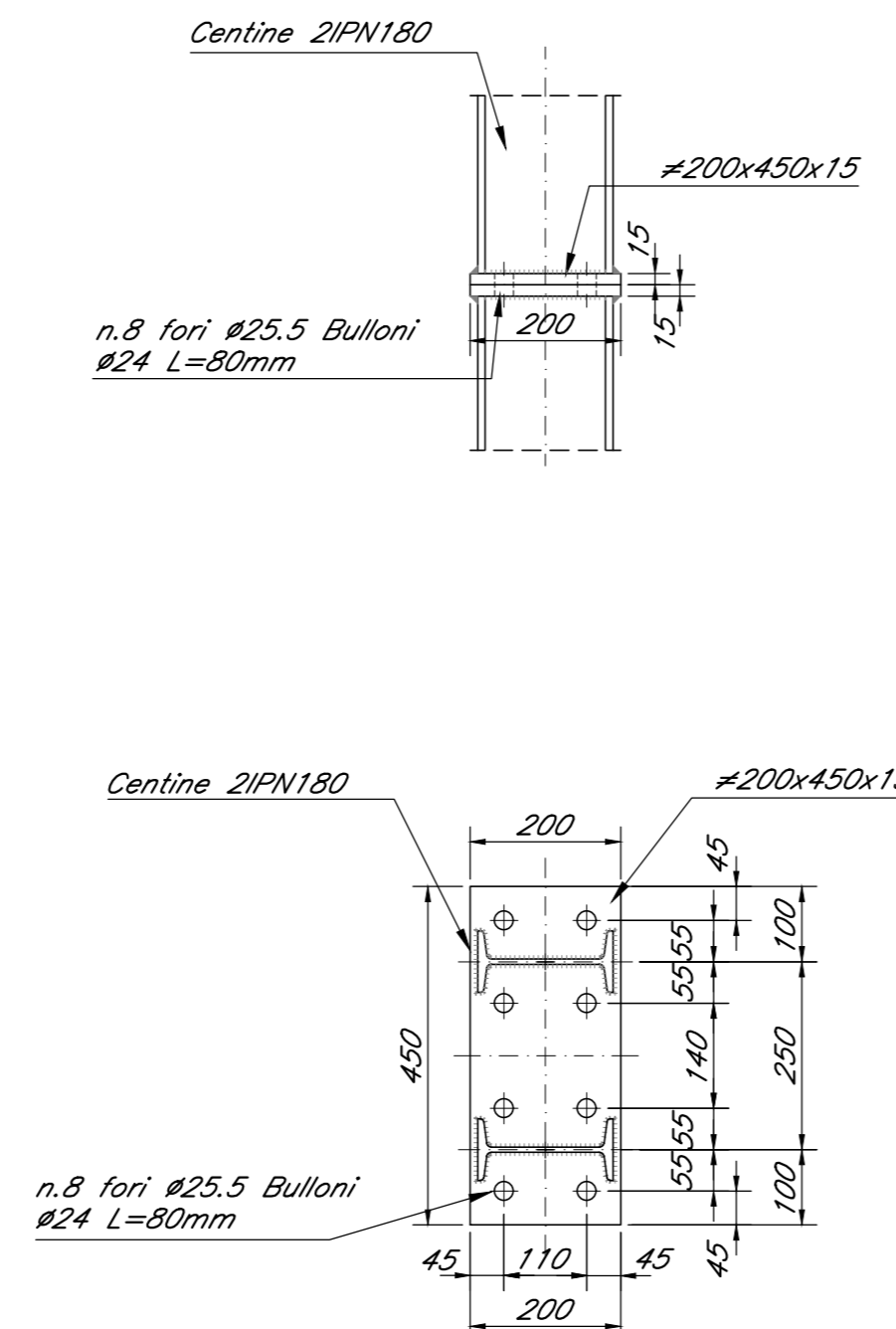
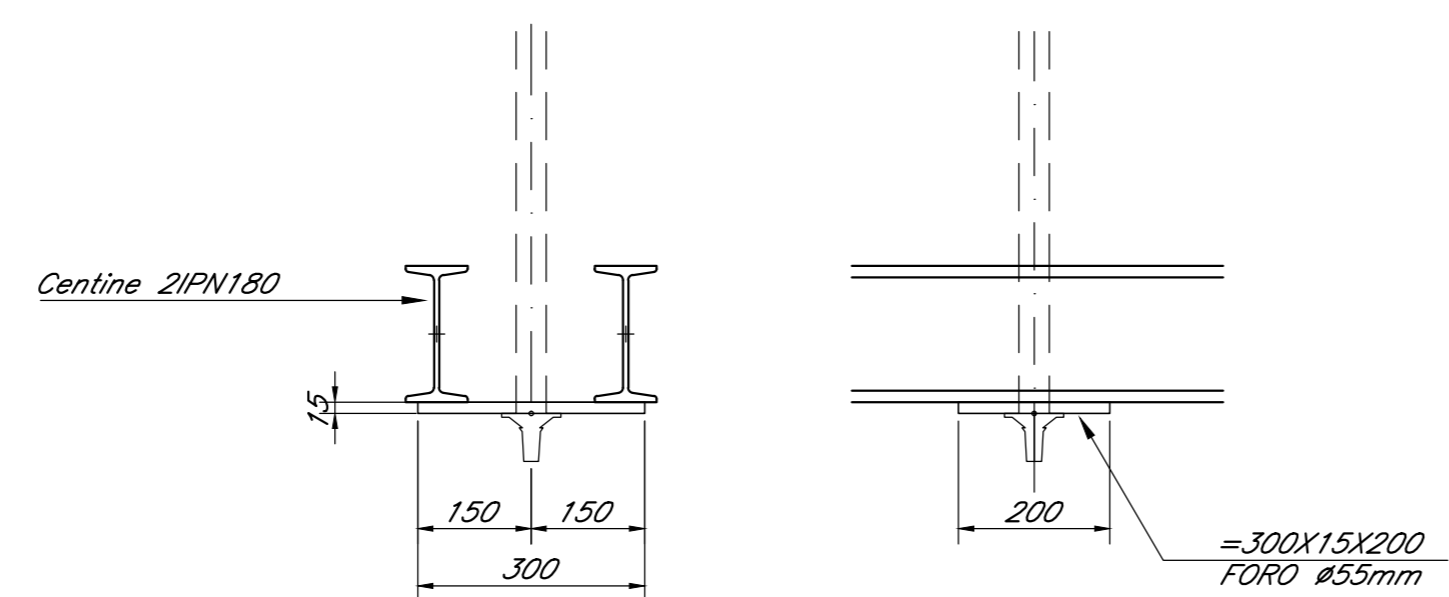


PARTICOLARE "02" scala 1:10



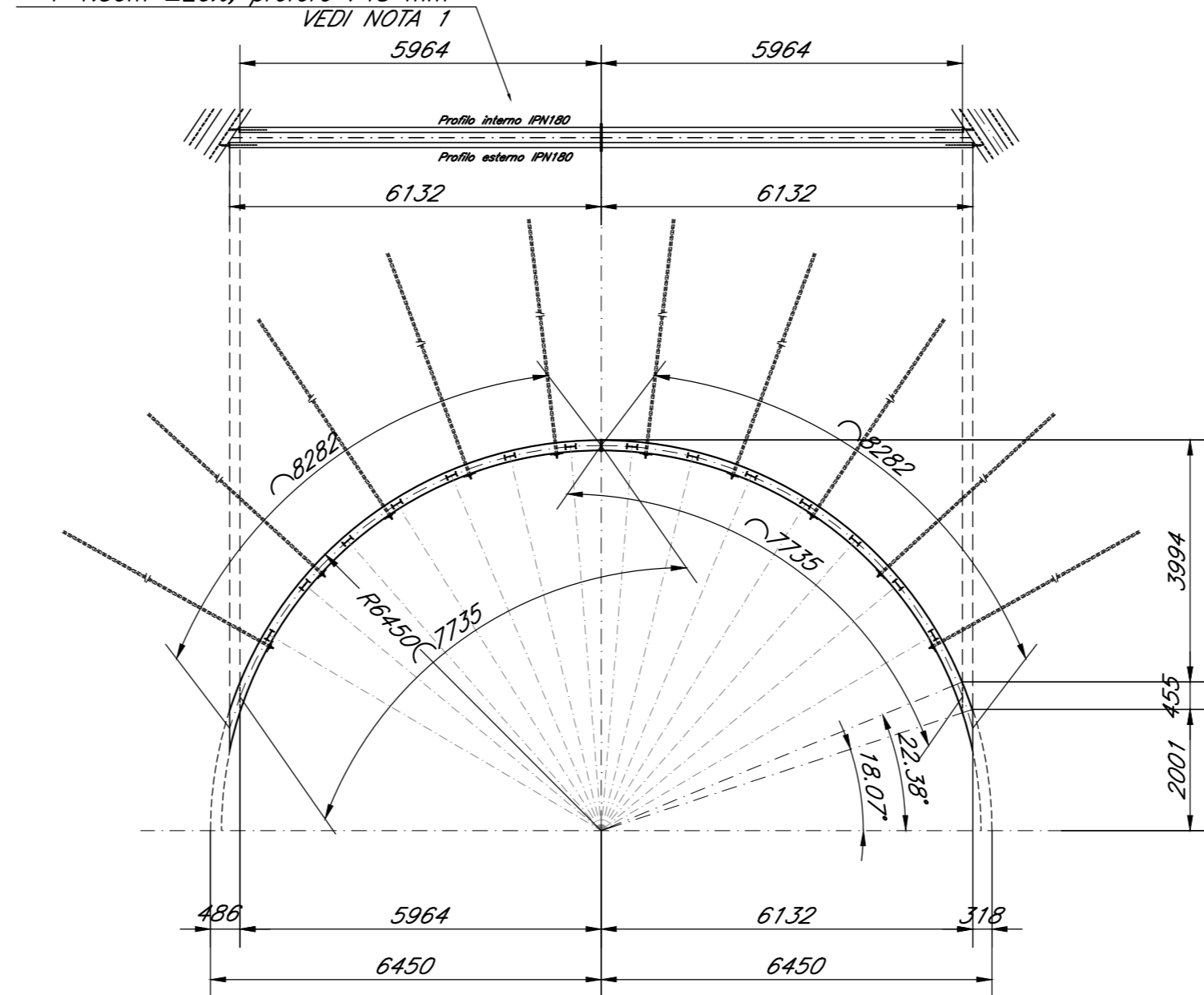
PARTICOLARE CATENE scala 1:10

PARTICOLARE PIASTRA PER SWELLEX scala 1:10



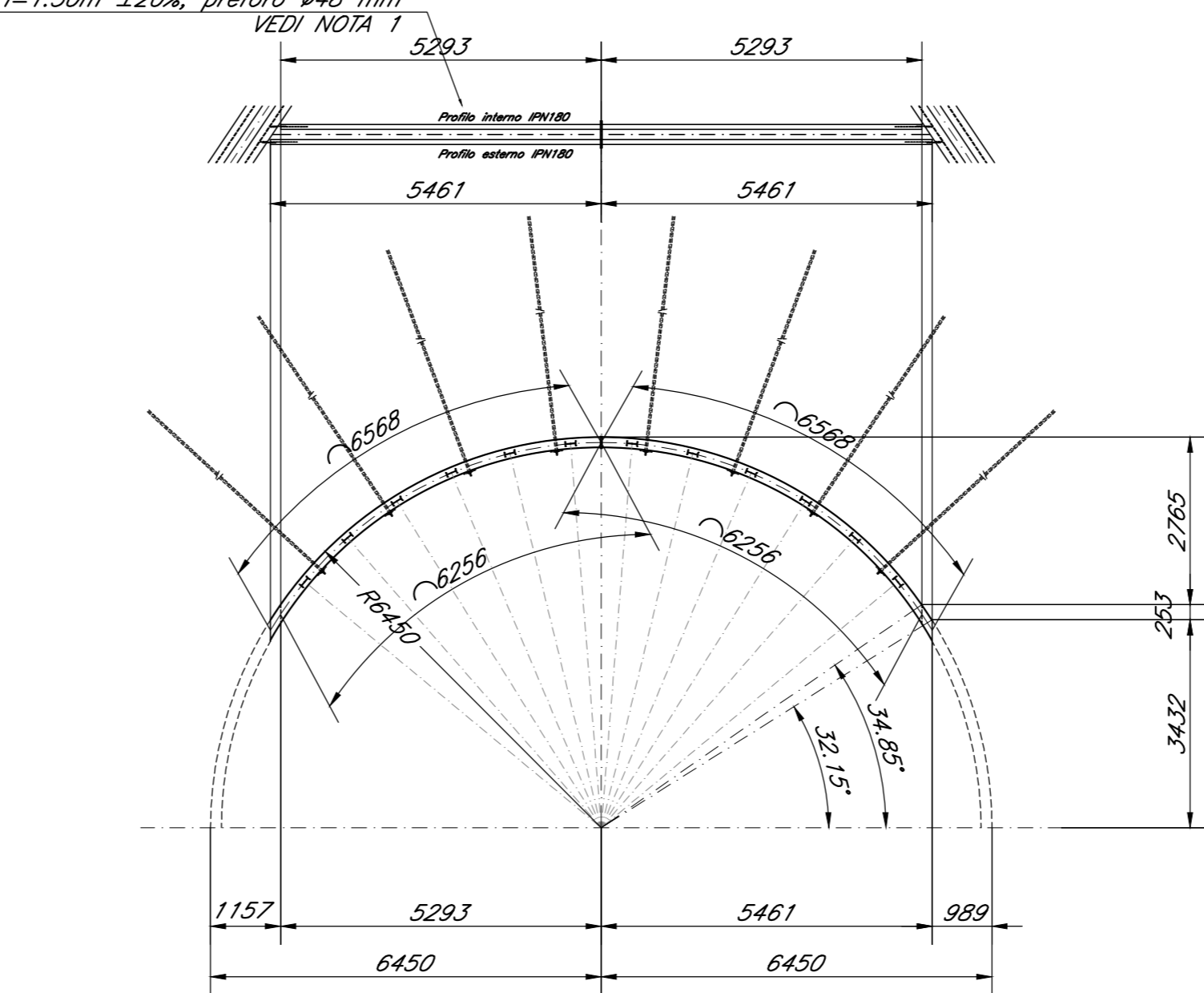
Chiodatura delle centine mediante 10 chiodi tipo "Swellex Pm24" L=4.50-6.00m i=1.50m ±20%, preforo #48 mm VEDI NOTA 1

CENTINA IN3.1 scala 1:100



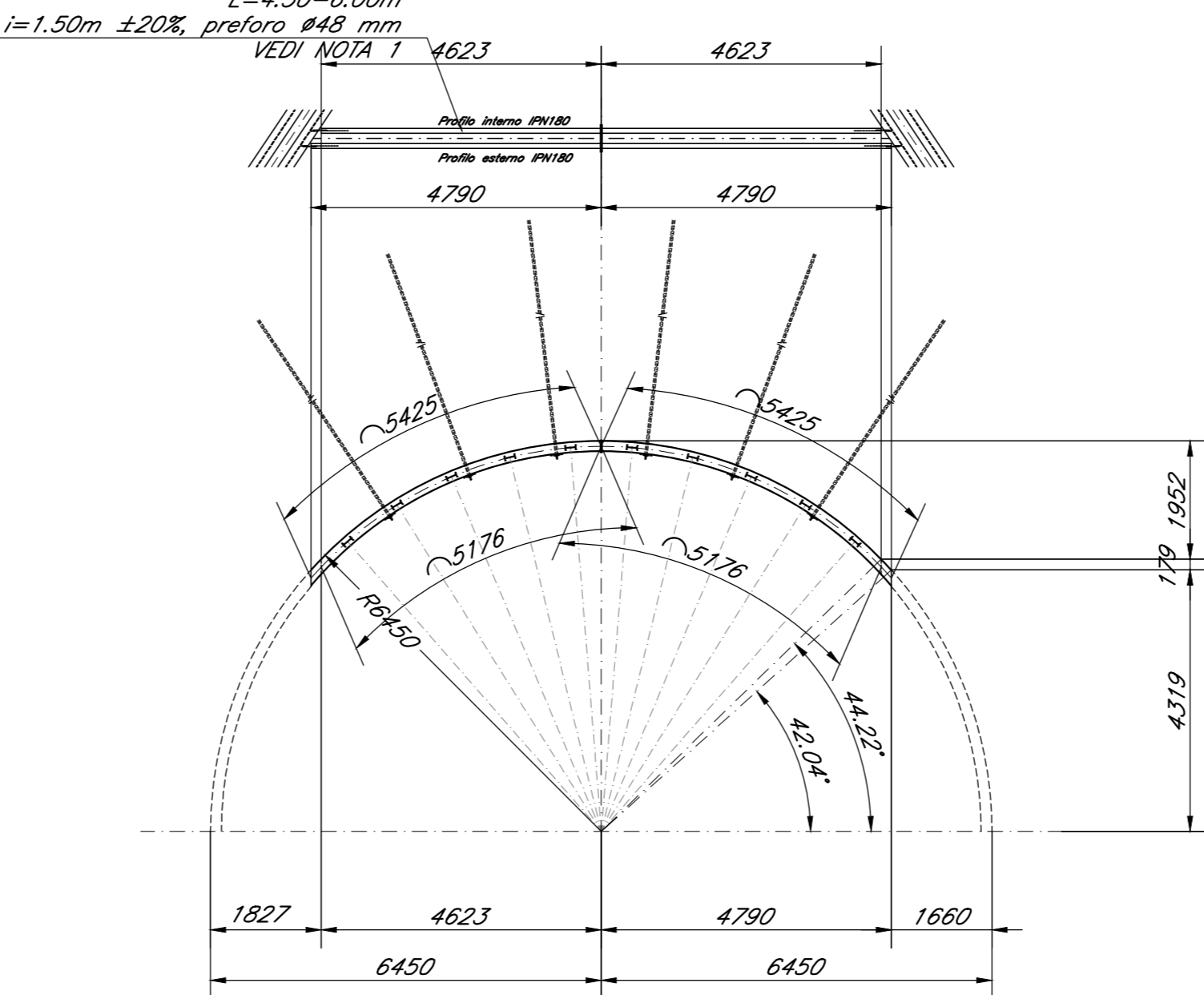
Chiodatura delle centine mediante 8 chiodi tipo "Swellex Pm24" L=4.50-6.00m i=1.50m ±20%, preforo #48 mm VEDI NOTA 1

CENTINA IN3.2 scala 1:100



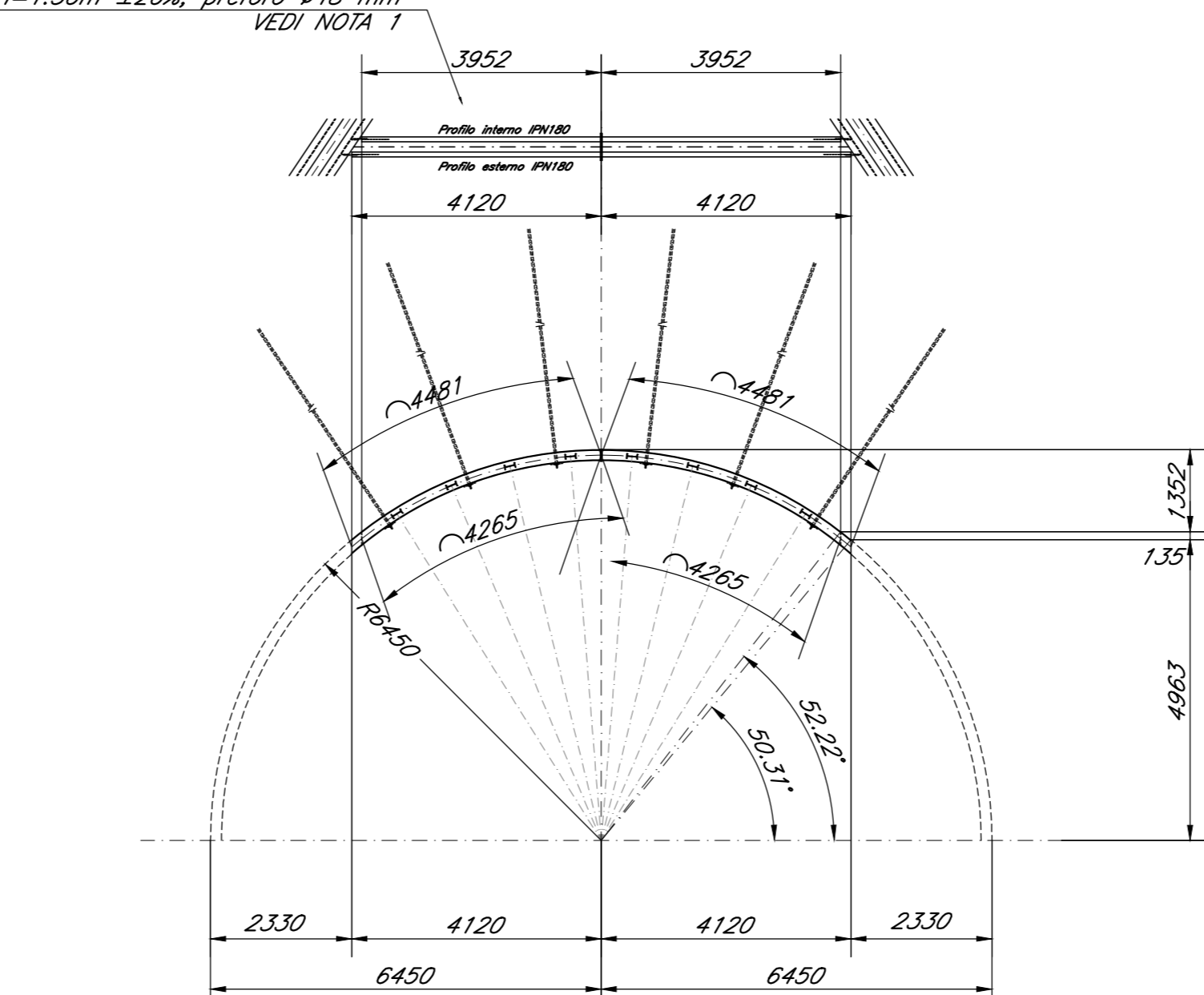
Chiodatura delle centine mediante 6 chiodi tipo "Swellex Pm24" L=4.50-6.00m i=1.50m ±20%, preforo #48 mm VEDI NOTA 1

CENTINA IN3.3 scala 1:100

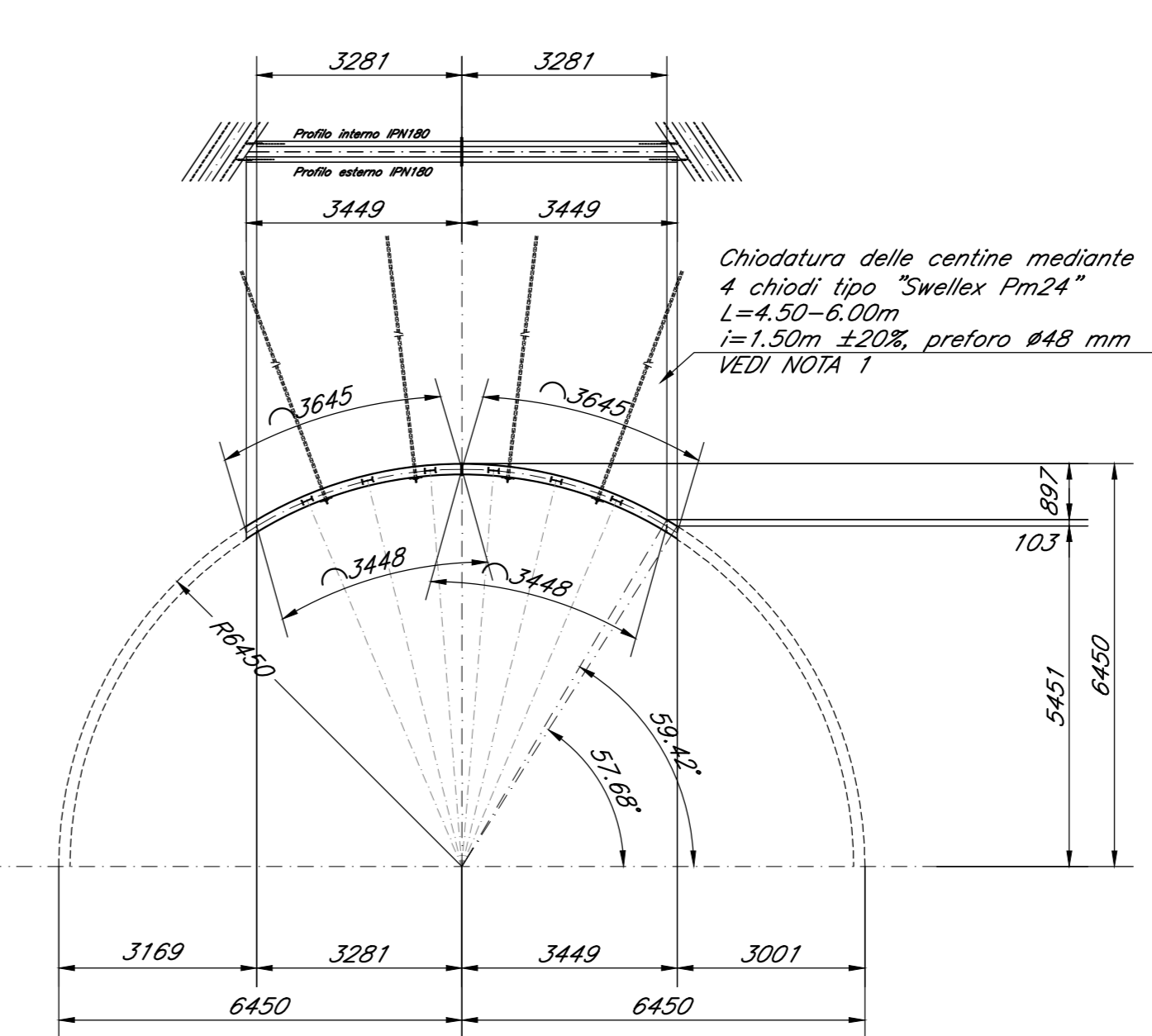


Chiodatura delle centine mediante 6 chiodi tipo "Swellex Pm24" L=4.50-6.00m i=1.50m ±20%, preforo #48 mm VEDI NOTA 1

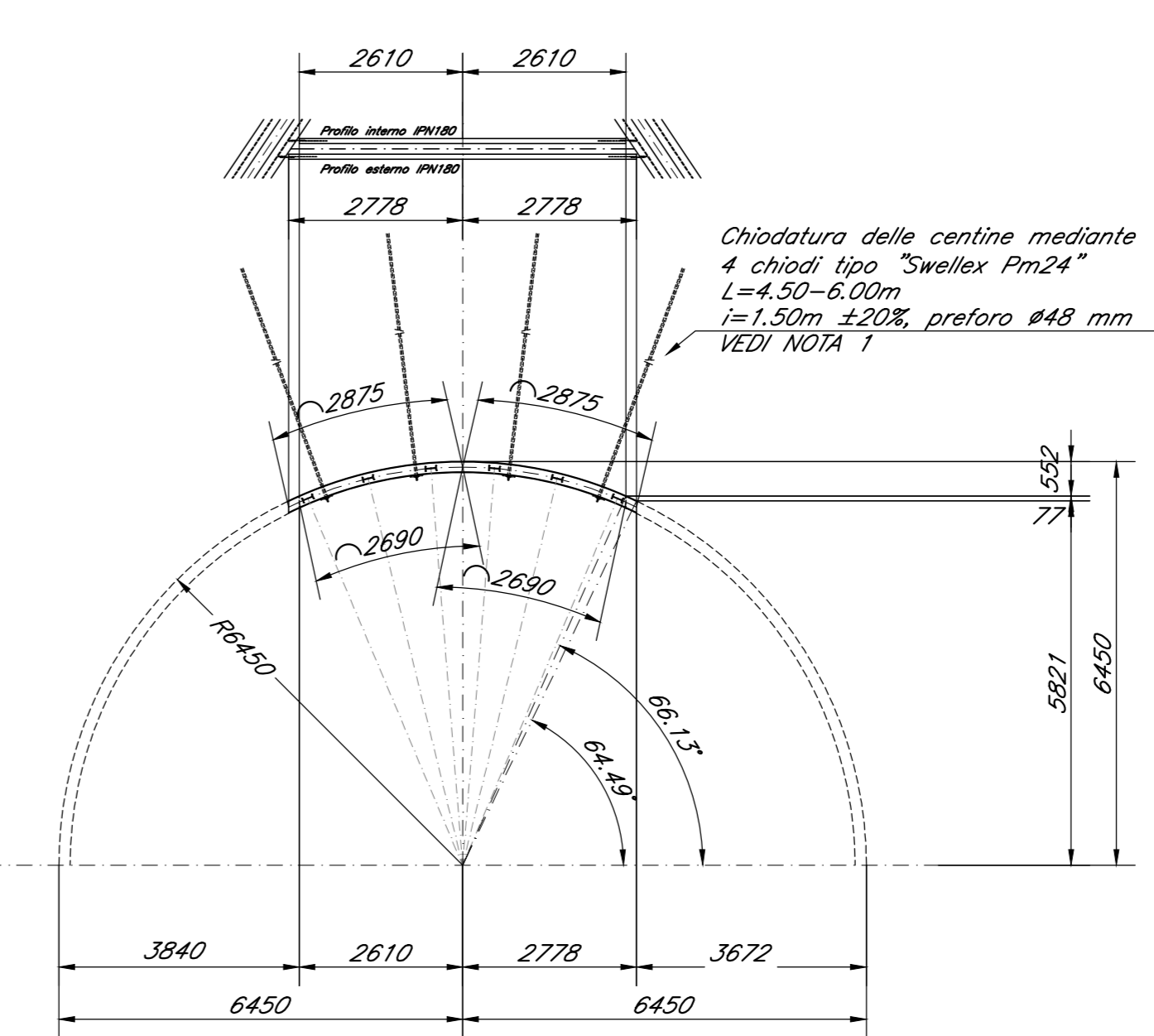
CENTINA IN3.4 scala 1:100



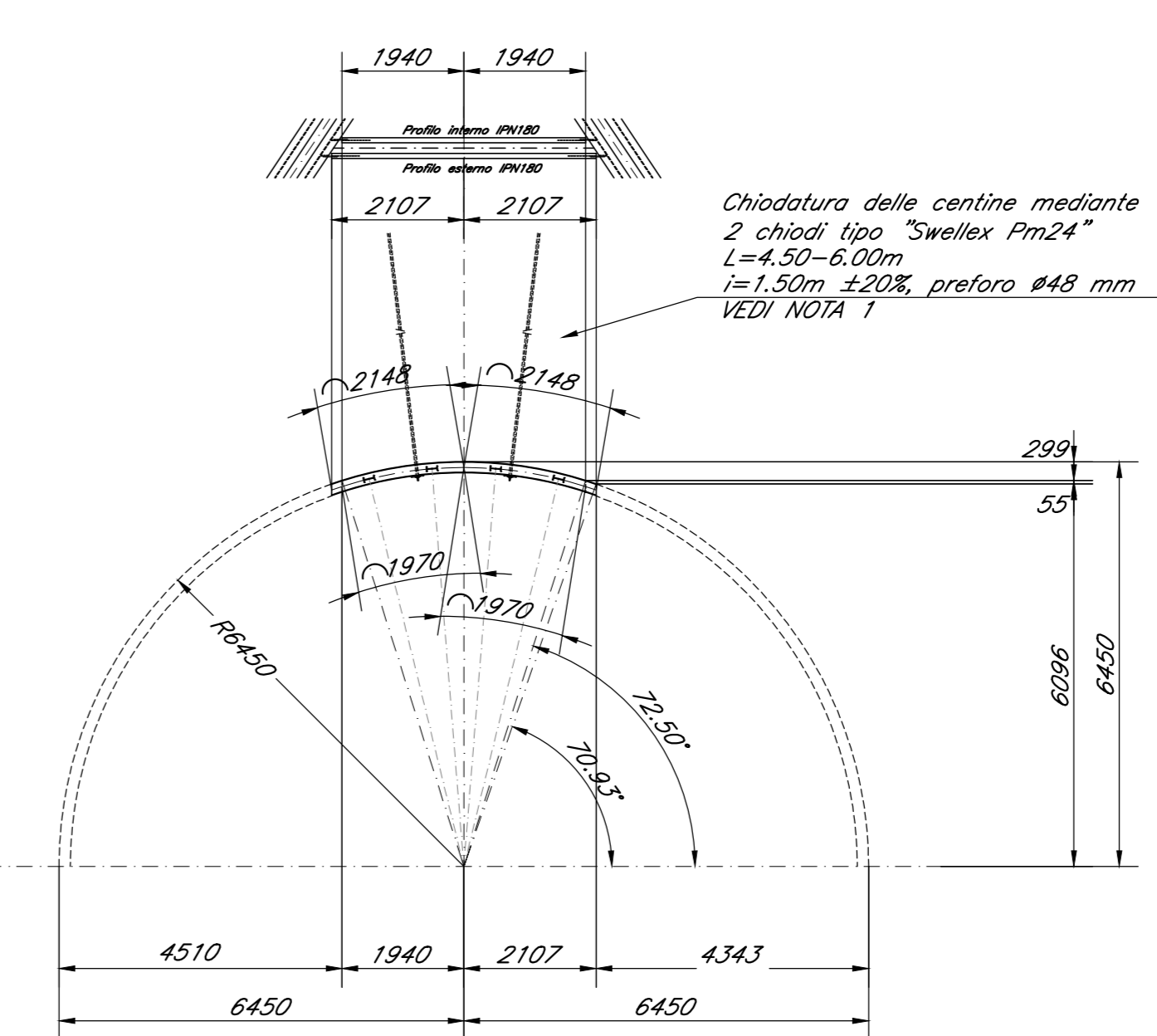
CENTINA IN3.5 scala 1:100



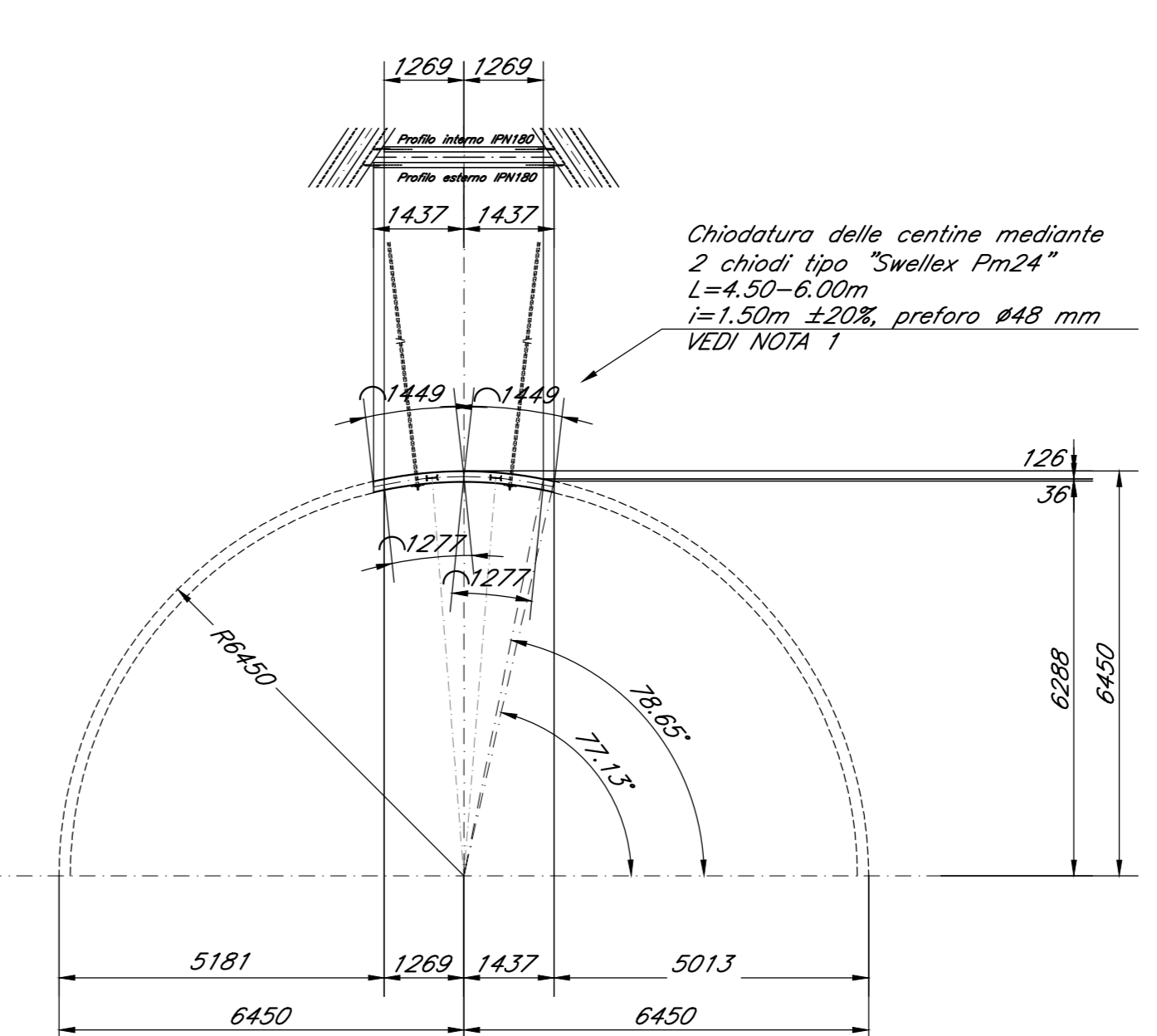
CENTINA IN3.6 scala 1:100



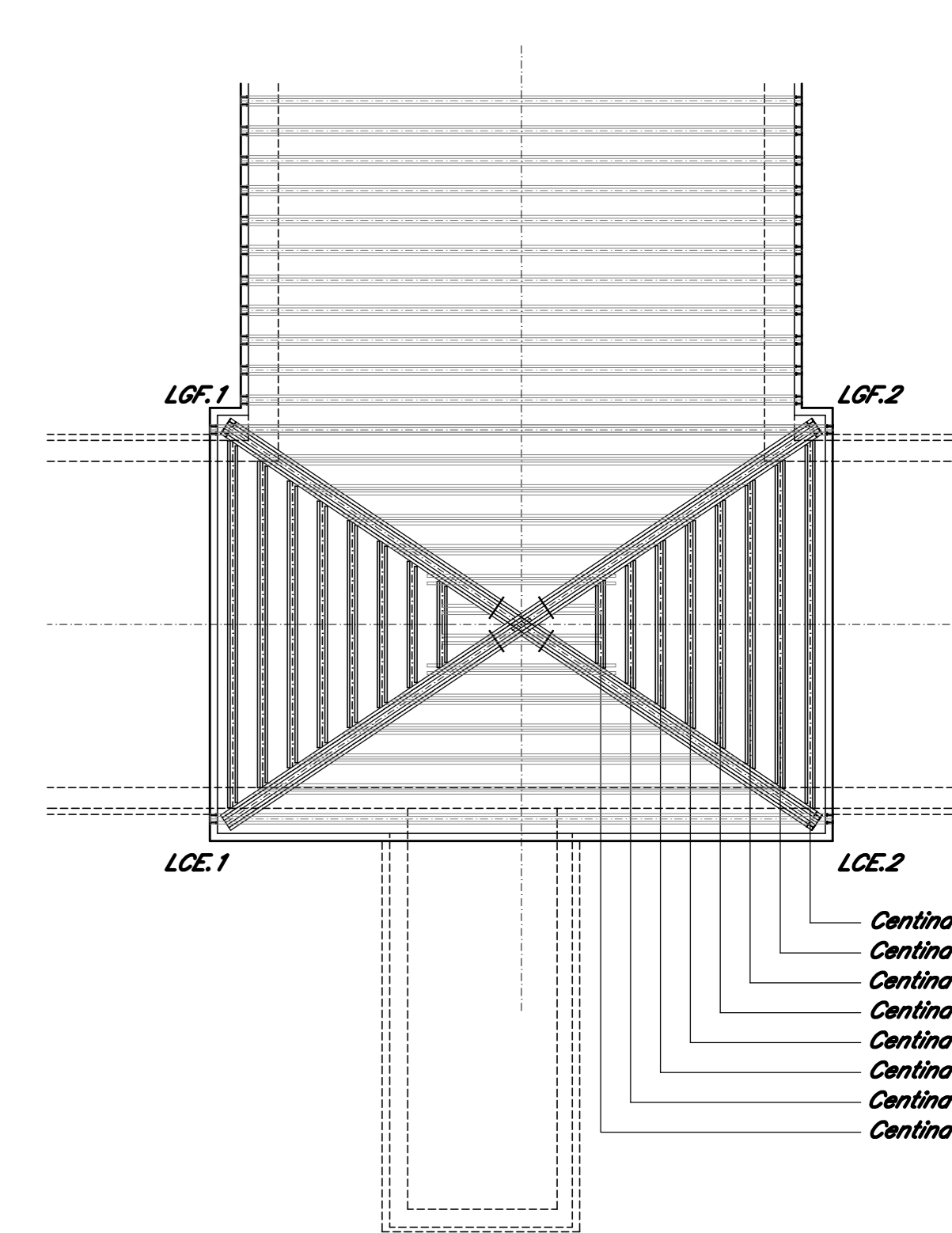
CENTINA IN3.7 scala 1:100



CENTINA IN3.8 scala 1:100



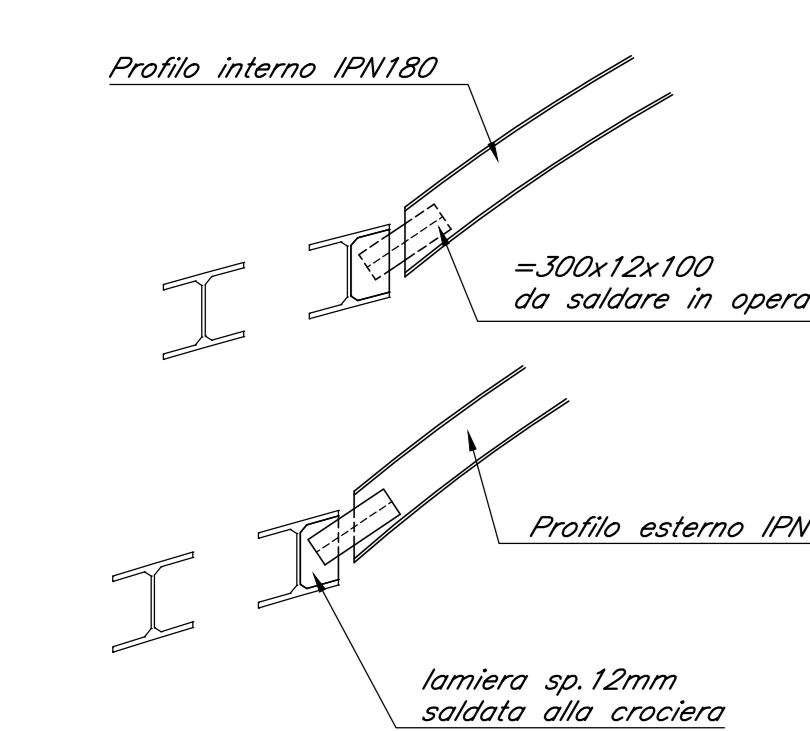
KEY PLAN CENTINE IN3 scala 1:200



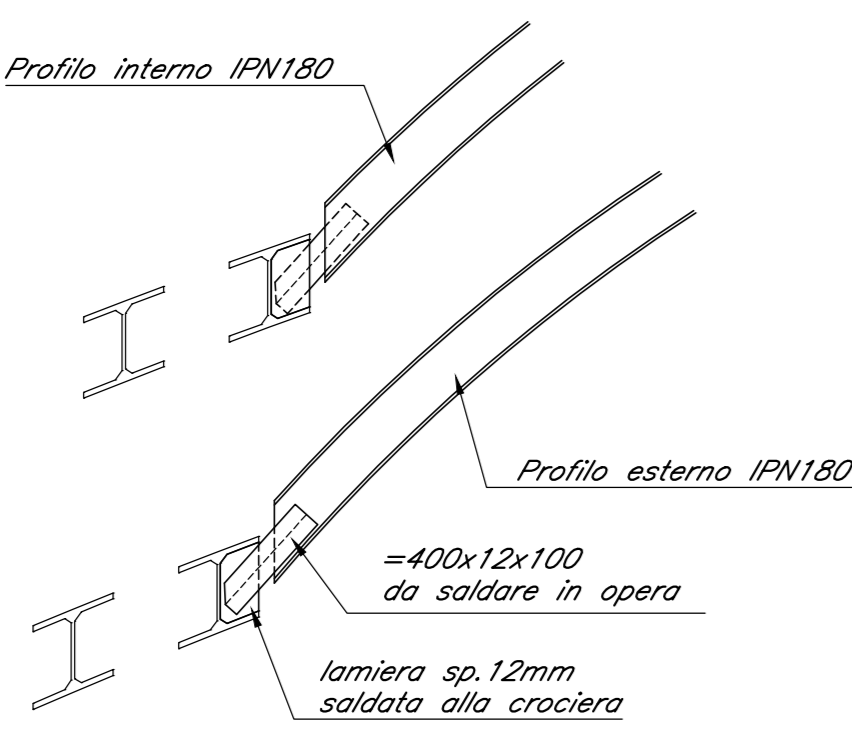
NOTA 1 - LUNGHEZZA CHIODATURE
LA LUNGHEZZA DELLE CHIODATURE DI 4.5m O 6.0m SARA' DEFINITA IN CORSO D'OPERA IN FUNZIONE DELLE CONDIZIONI GEOSTRUTTURALI RISCOINTRATE

NOTE GENERALI
Per le caratteristiche dei materiali si rimanda all'elaborato "Caratteristiche dei Materiali, note e prescrizioni" - IFIN 01 E ZZ SP GN0000 001 B

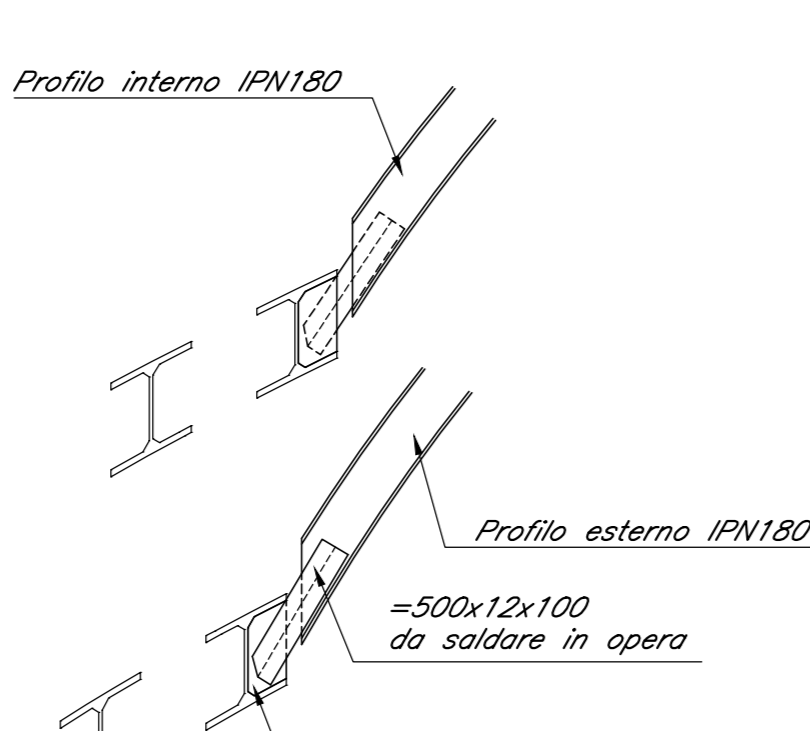
CENTINA IN3.4 scala 1:25



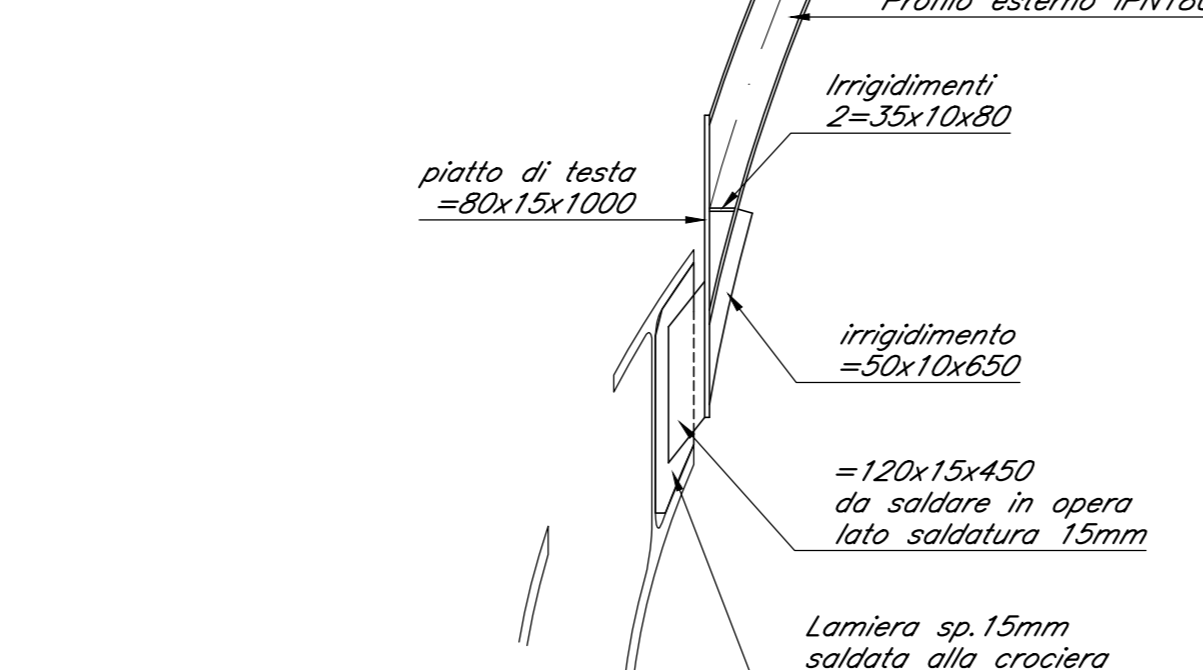
CENTINA IN3.3 scala 1:25



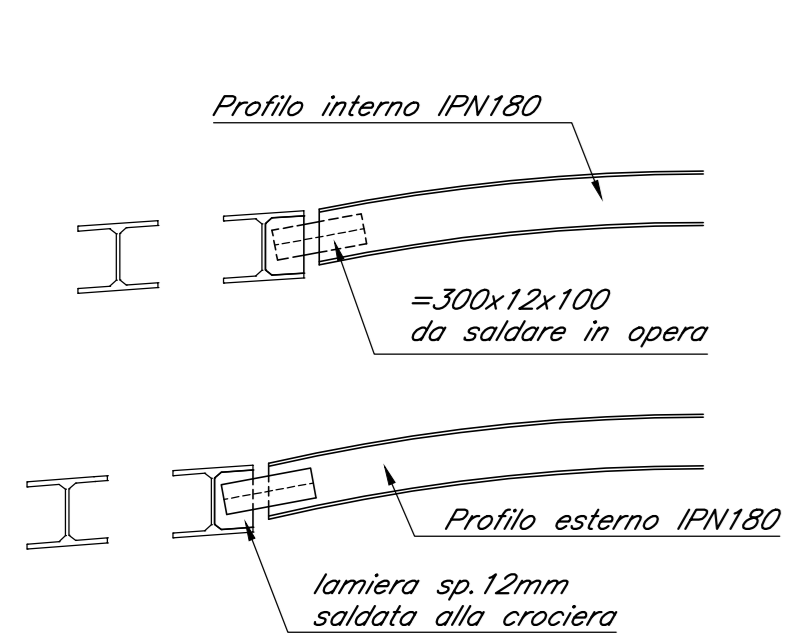
CENTINA IN3.2 scala 1:25



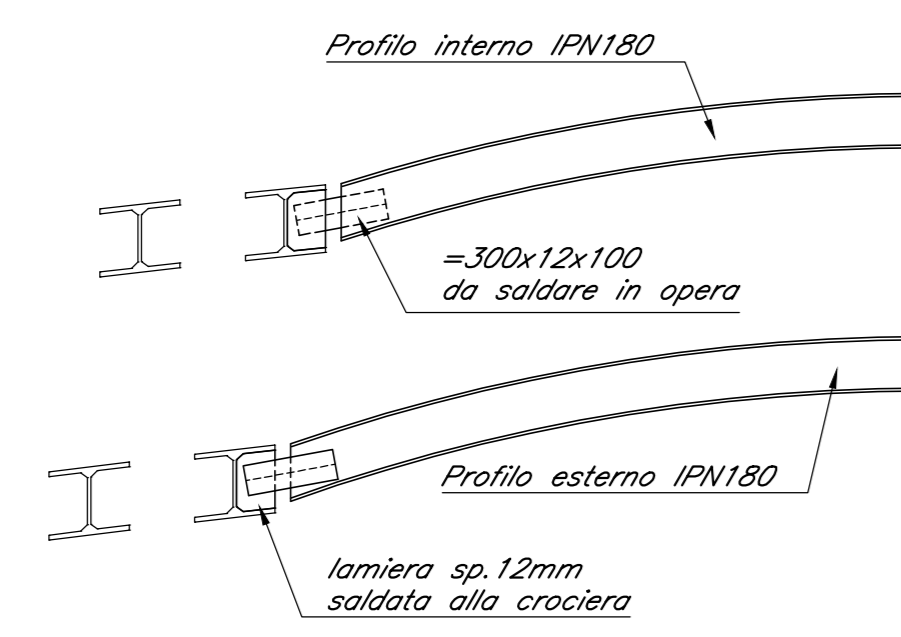
CENTINA IN3.1 scala 1:25



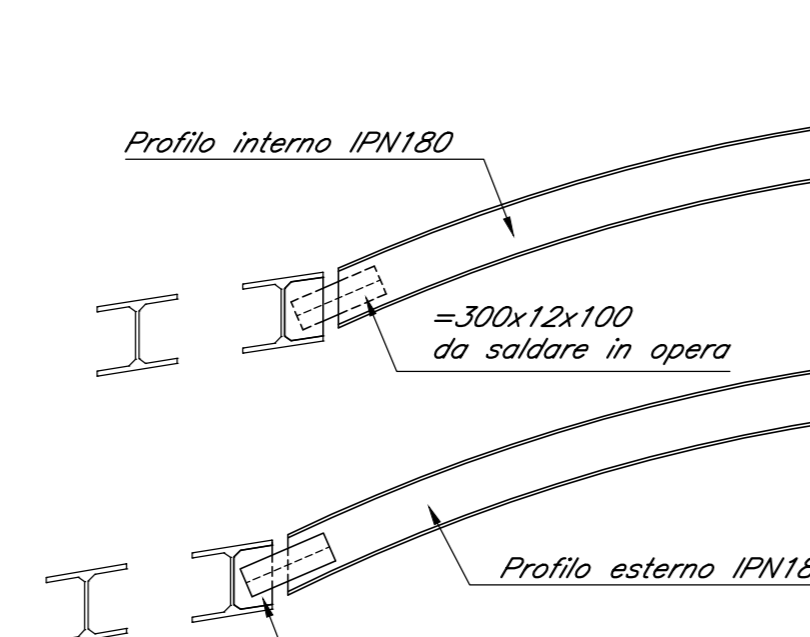
CENTINA IN3.8 scala 1:25



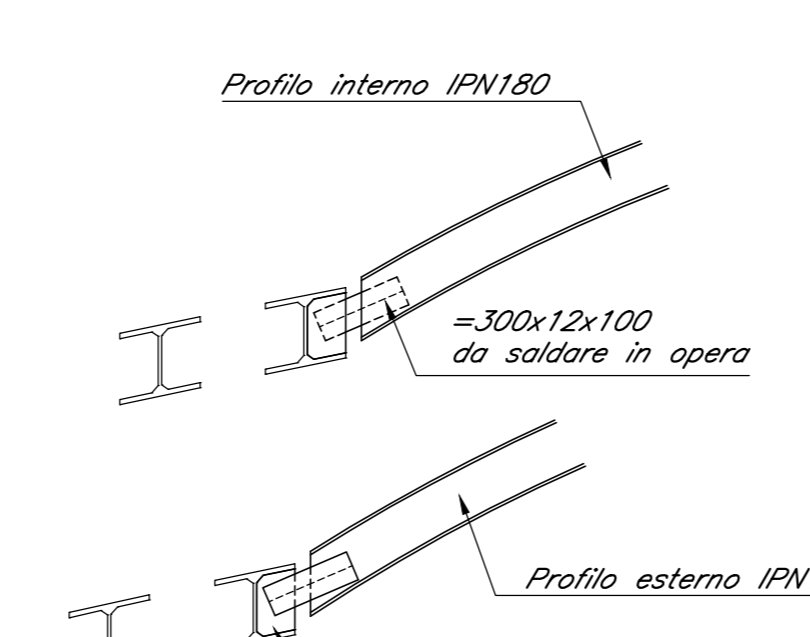
CENTINA IN3.7 scala 1:25



CENTINA IN3.6 scala 1:25



CENTINA IN3.5 scala 1:25



COMMITTENTE: **RFI** INFRASTRUTTURE FERROVIARIE ITALIANE

DIREZIONE LAVORI: **ITALFERR** GRUPPO FERROVIE DELLO STATO ITALIANE

APPALTATORE: **CONSORZIO CFT** PIZZAROTTI

PROGETTAZIONE: **CONSORZIO CFT** DIRETTORE TECNICO: **PIZZAROTTI**

PROGETTISTA: **CONSORZIO CFT** DIRETTORE DELLA PROGETTAZIONE: **ING. PIETRO MAZZOLI**

PROGETTO ESECUTIVO

ITINERARIO NAPOLI-BARI RADDOPPIO TRATTA CANCELLO-BENEVENTO LE LOTTO FUNZIONALE CANCELLO-FRASSO TESLINO E VARIANTE ALLA LINEA ROMA-NAPOLI VIA CASSINO NEL COMUNE MADDALONI USCITA DI EMERGENZA km 3+777.276

Innesto con la galleria di Linea a Galleria Finestra Sezione tipo IN3 - Carpenteria centine

APPALTATORE: **CONSORZIO CFT** DIRETTORE TECNICO: **PIZZAROTTI** SCALA: 1:50

COMMESSA: **IFIN 01 E ZZ BB GN 06 0 0 008 B** ENTE TIPO DOC. OPERA/DISCIPLINA: **GN 06 00 008 B** PROGR. REV.

| Rev. | Descrizione | Redatto | Data | Verificato | Data | Approvato | Data | Autorizzato Data |
|------|--------------------------|---------|------------|------------|------------|-----------|------------|------------------|
| A | Emesso | P. Enzo | 10/01/2018 | G. Kabanov | 10/01/2018 | P. Mazzi | 10/01/2018 | G. Kabanov |
| B | Rev. Annotata IT 2008/18 | P. Enzo | 10/09/2018 | G. Kabanov | 10/09/2018 | P. Mazzi | 10/09/2018 | |

File: IFIN 01 E ZZ BB GN 06 0 0 008 B.dwg n. Elab.: