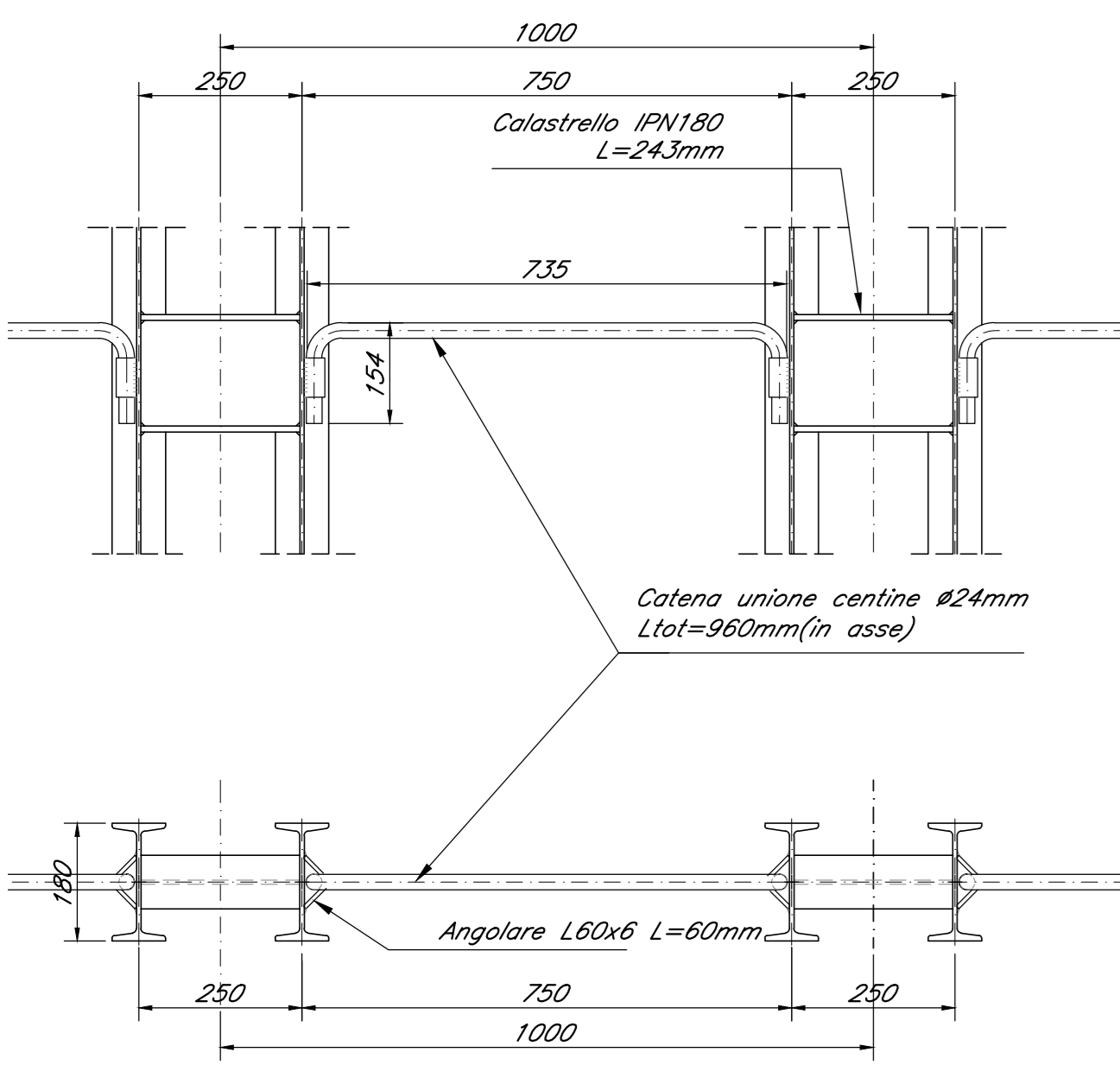
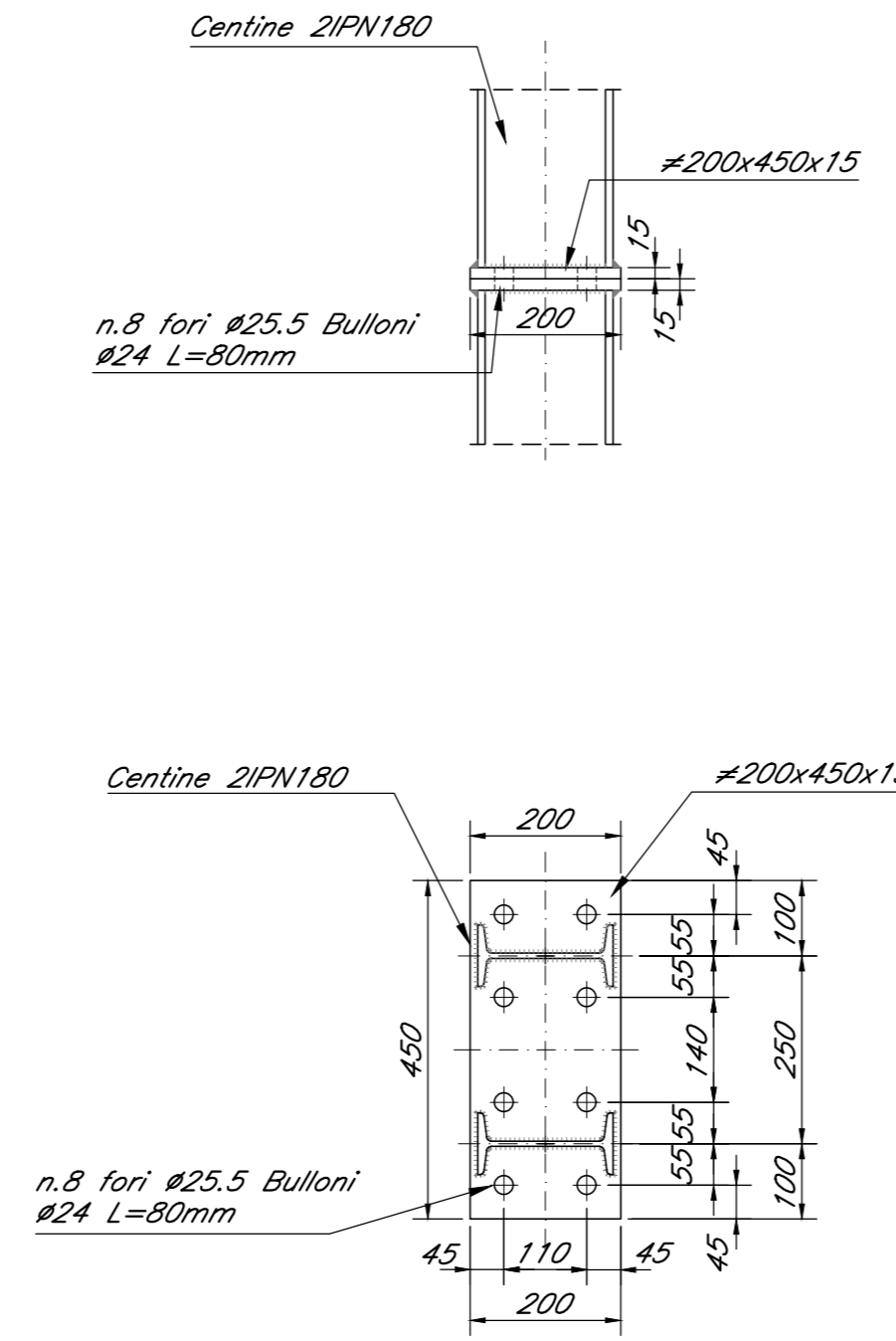
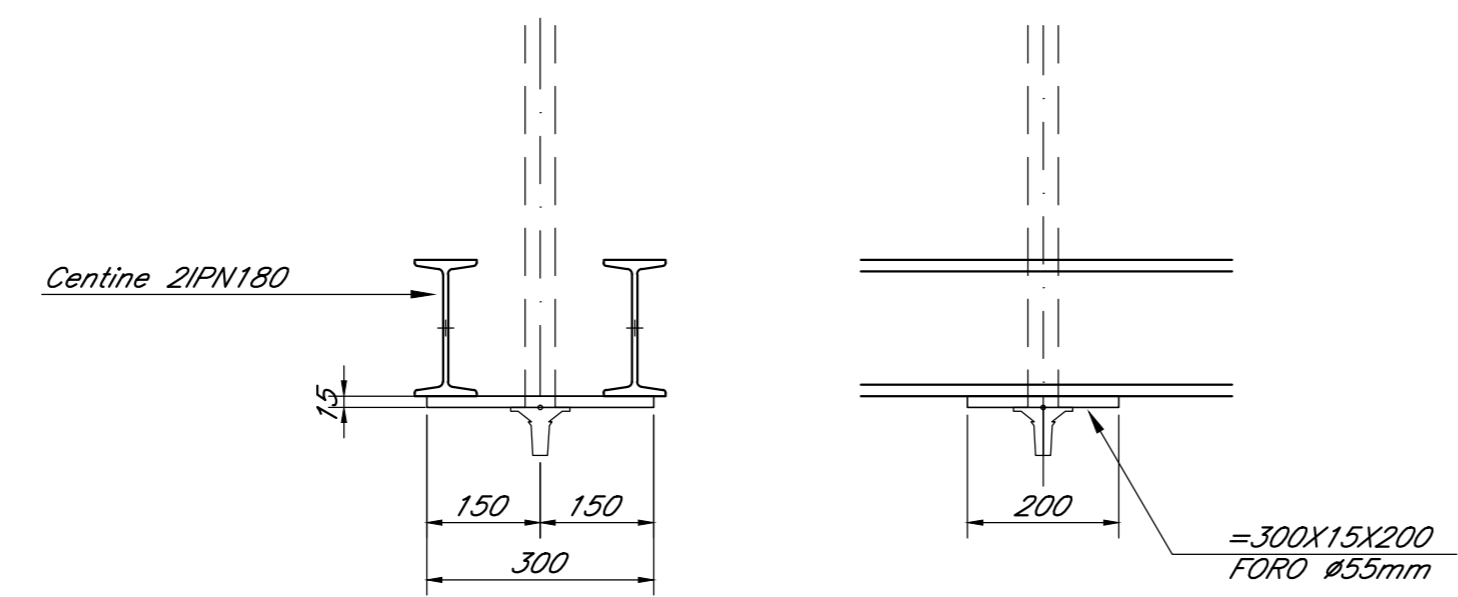


PARTICOLARE "02" scala 1:10



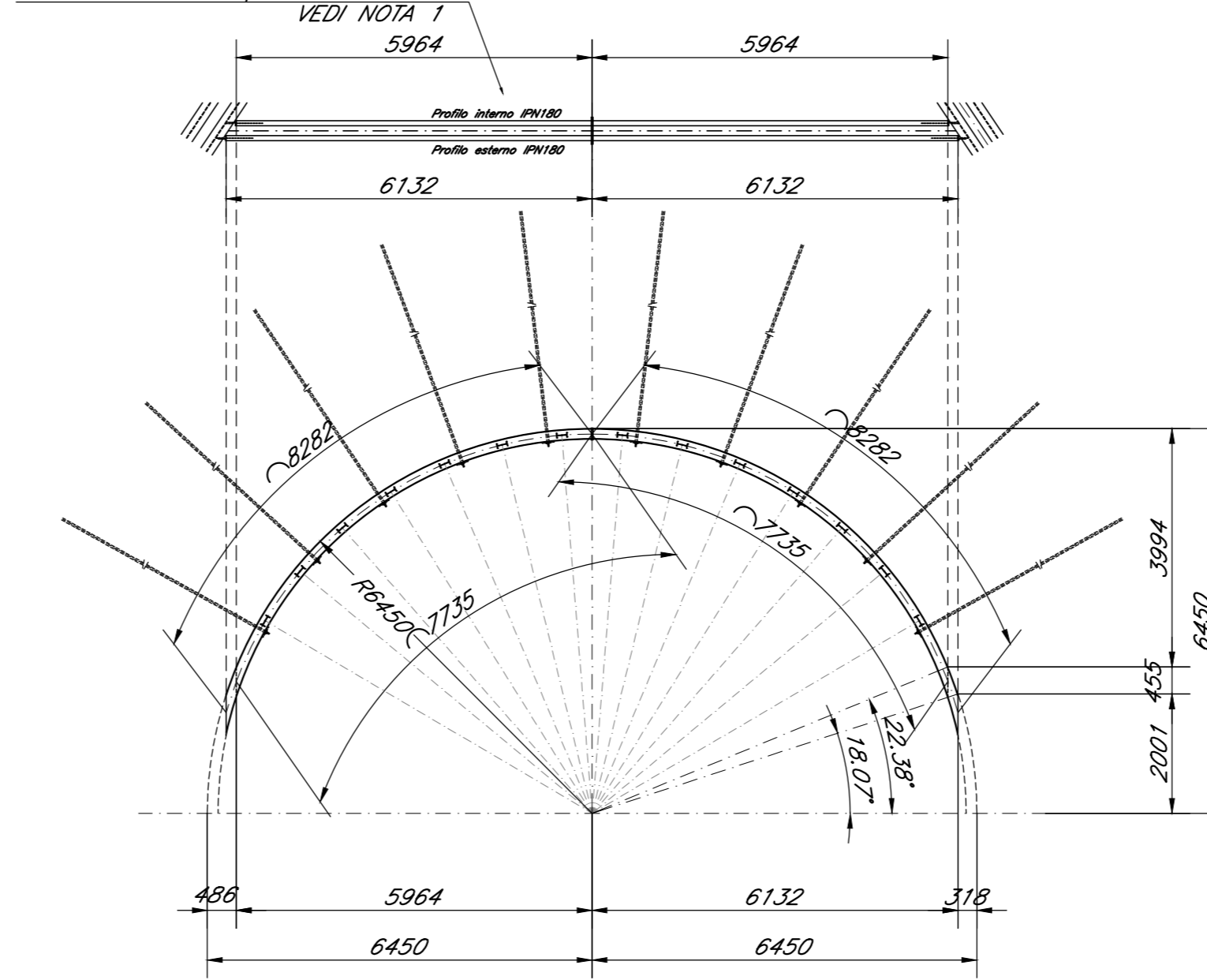
PARTICOLARE CATENE scala 1:10

PARTICOLARE PIASTRA PER SWELLEX scala 1:10



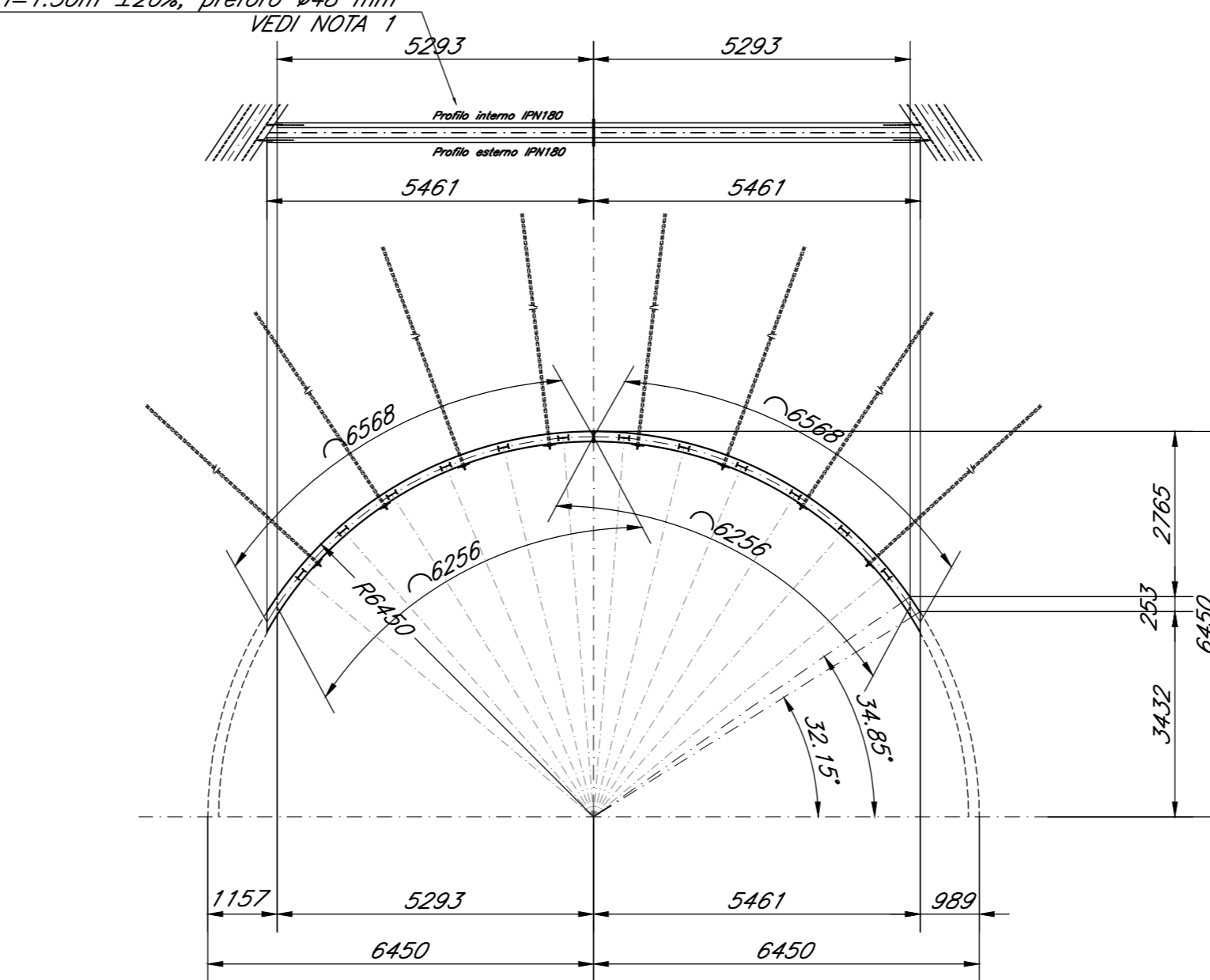
Chiodatura delle centine mediante 10 chiodi tipo "Swellex Pm24" L=4.50-6.00m i=1.50m ±20%, preforo #48 mm VEDI NOTA 1

CENTINA IN3.1 scala 1:100



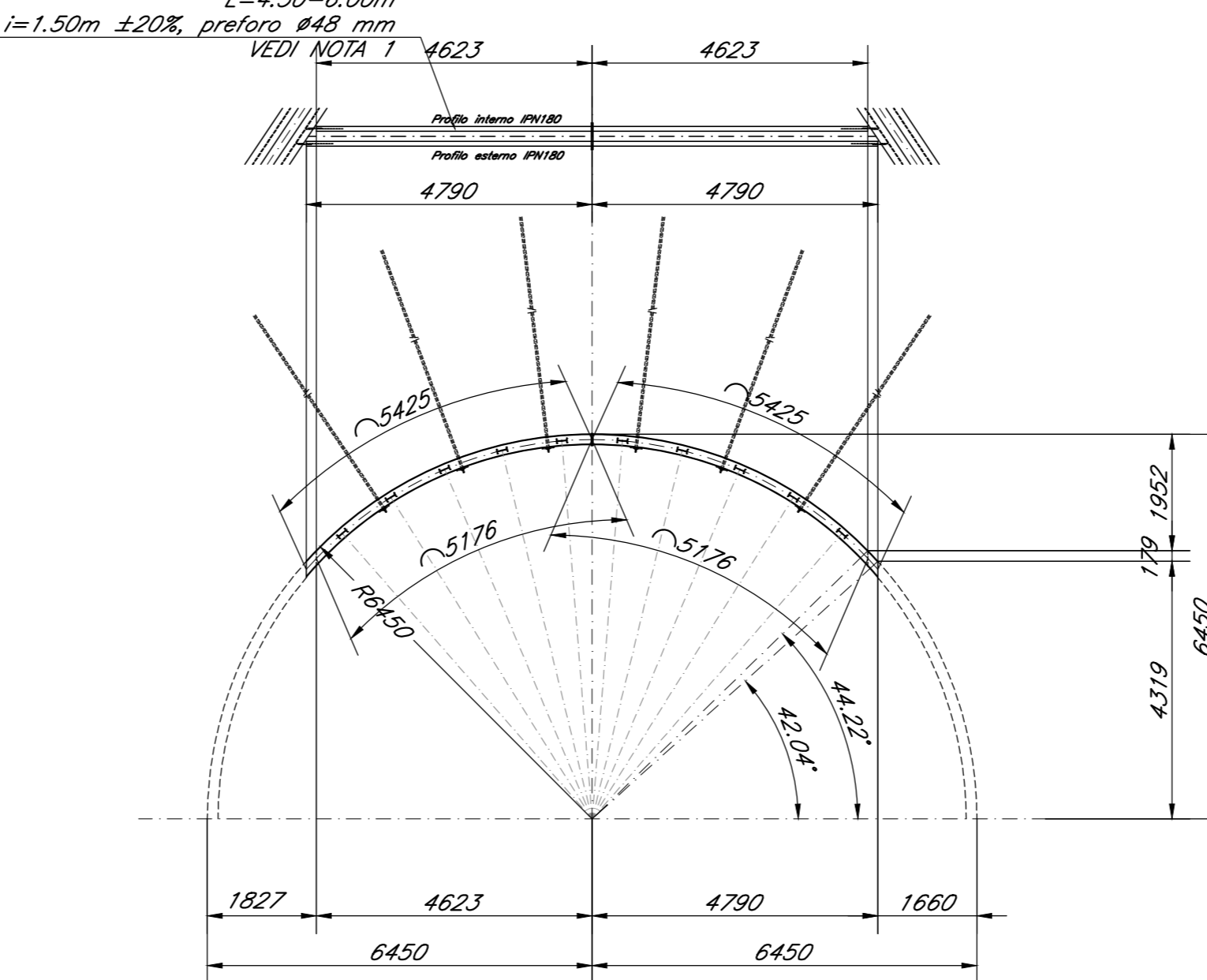
Chiodatura delle centine mediante 8 chiodi tipo "Swellex Pm24" L=4.50-6.00m i=1.50m ±20%, preforo #48 mm VEDI NOTA 1

CENTINA IN3.2 scala 1:100



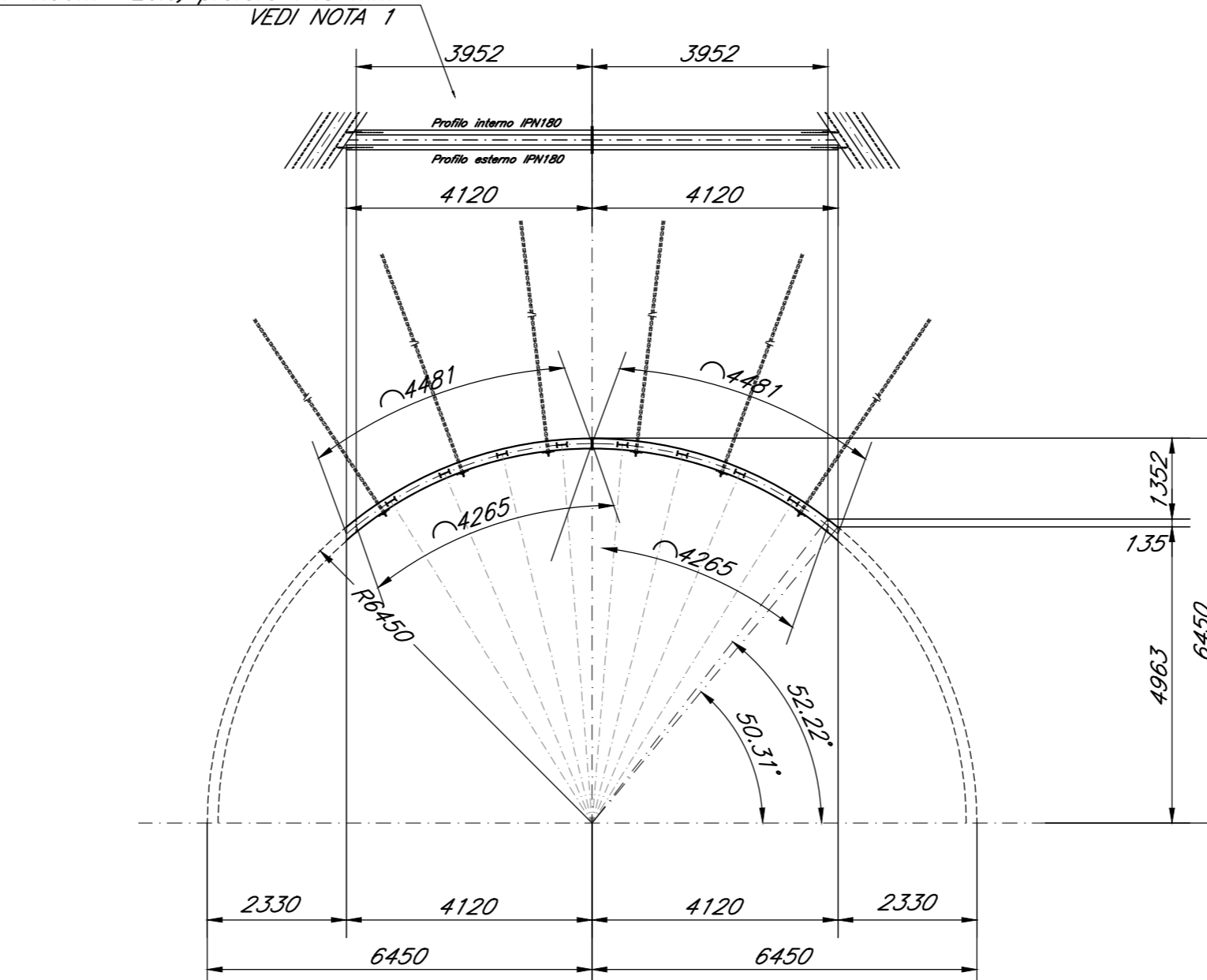
Chiodatura delle centine mediante 6 chiodi tipo "Swellex Pm24" L=4.50-6.00m i=1.50m ±20%, preforo #48 mm VEDI NOTA 1

CENTINA IN3.3 scala 1:100

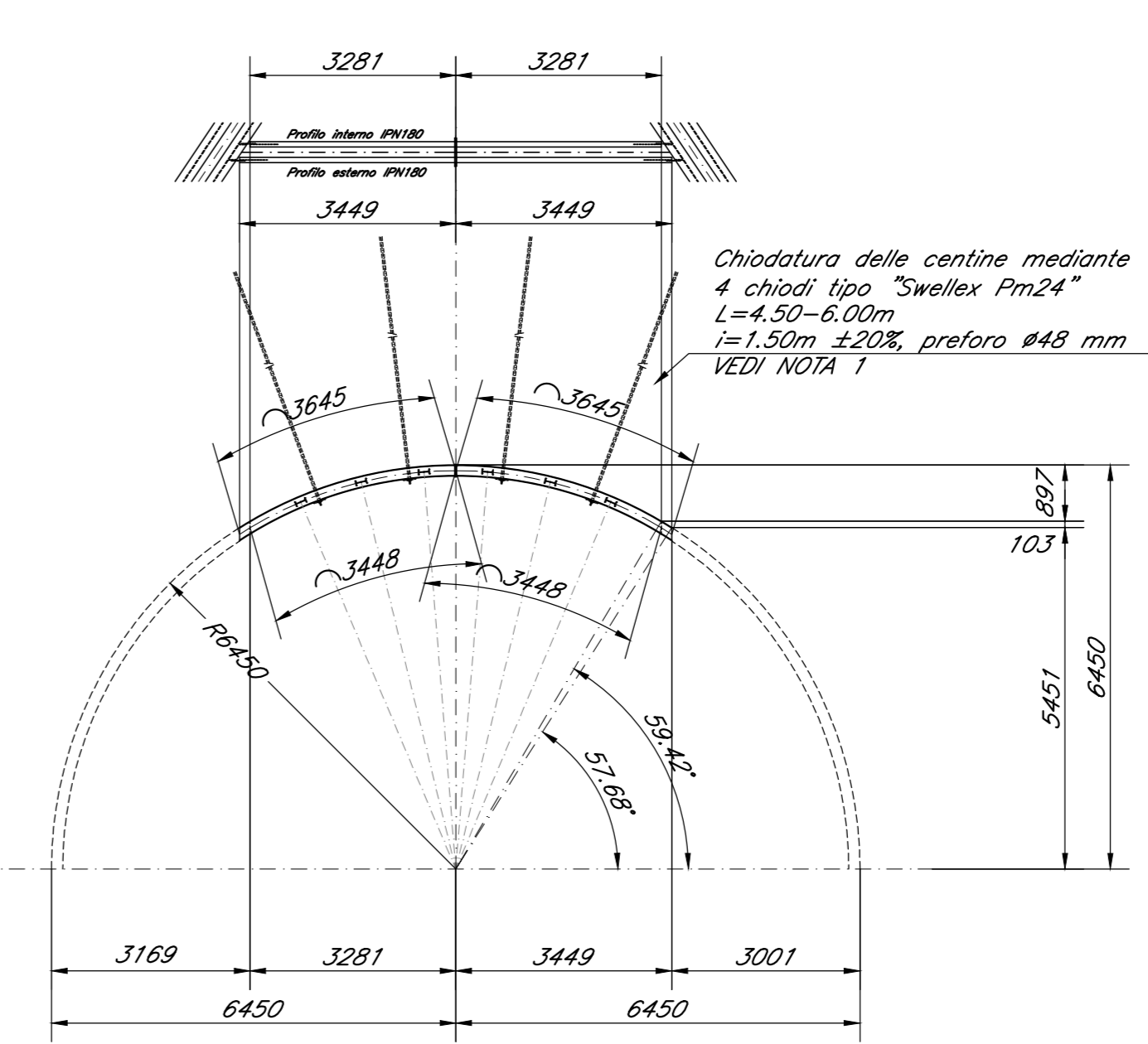


Chiodatura delle centine mediante 6 chiodi tipo "Swellex Pm24" L=4.50-6.00m i=1.50m ±20%, preforo #48 mm VEDI NOTA 1

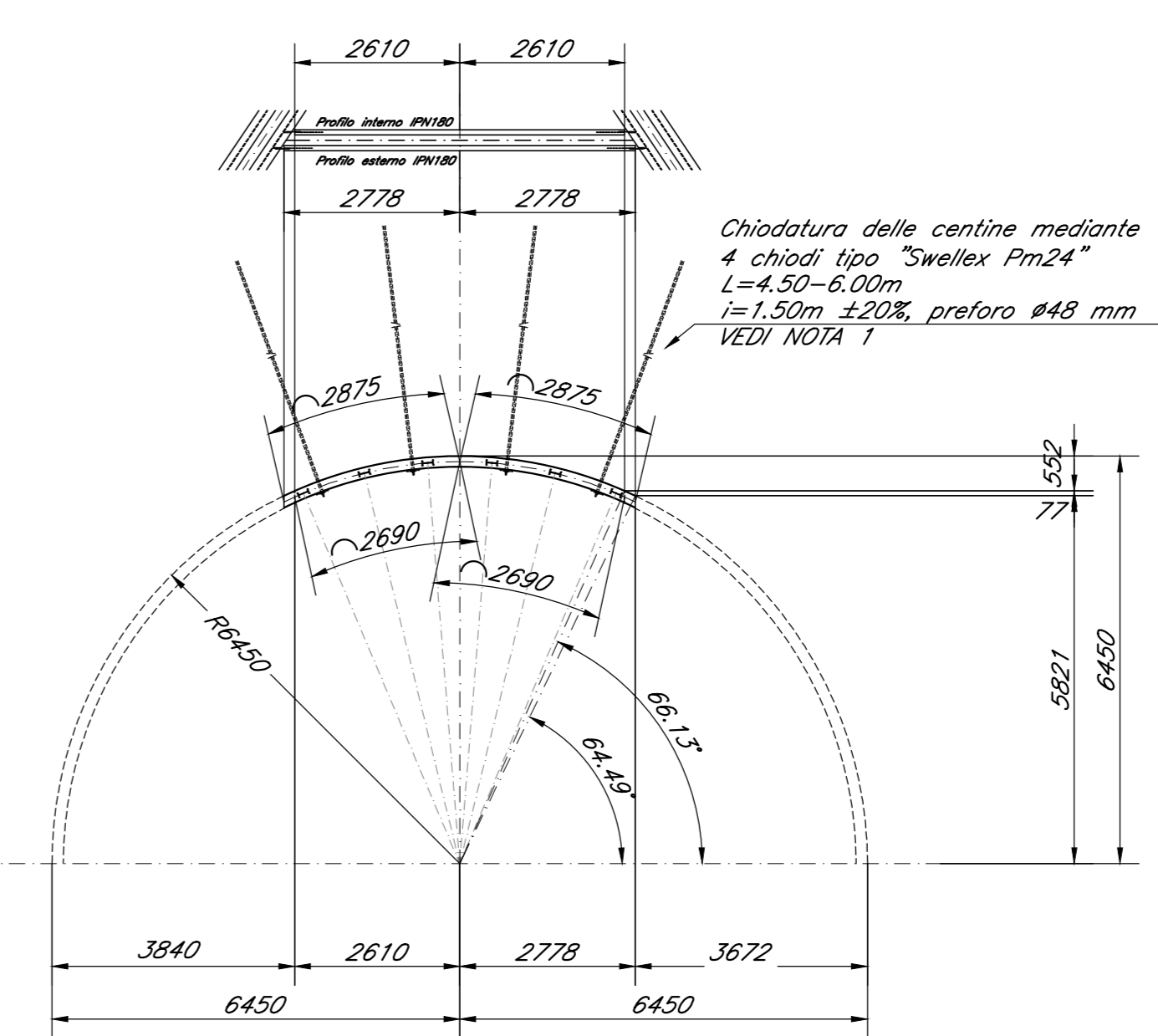
CENTINA IN3.4 scala 1:100



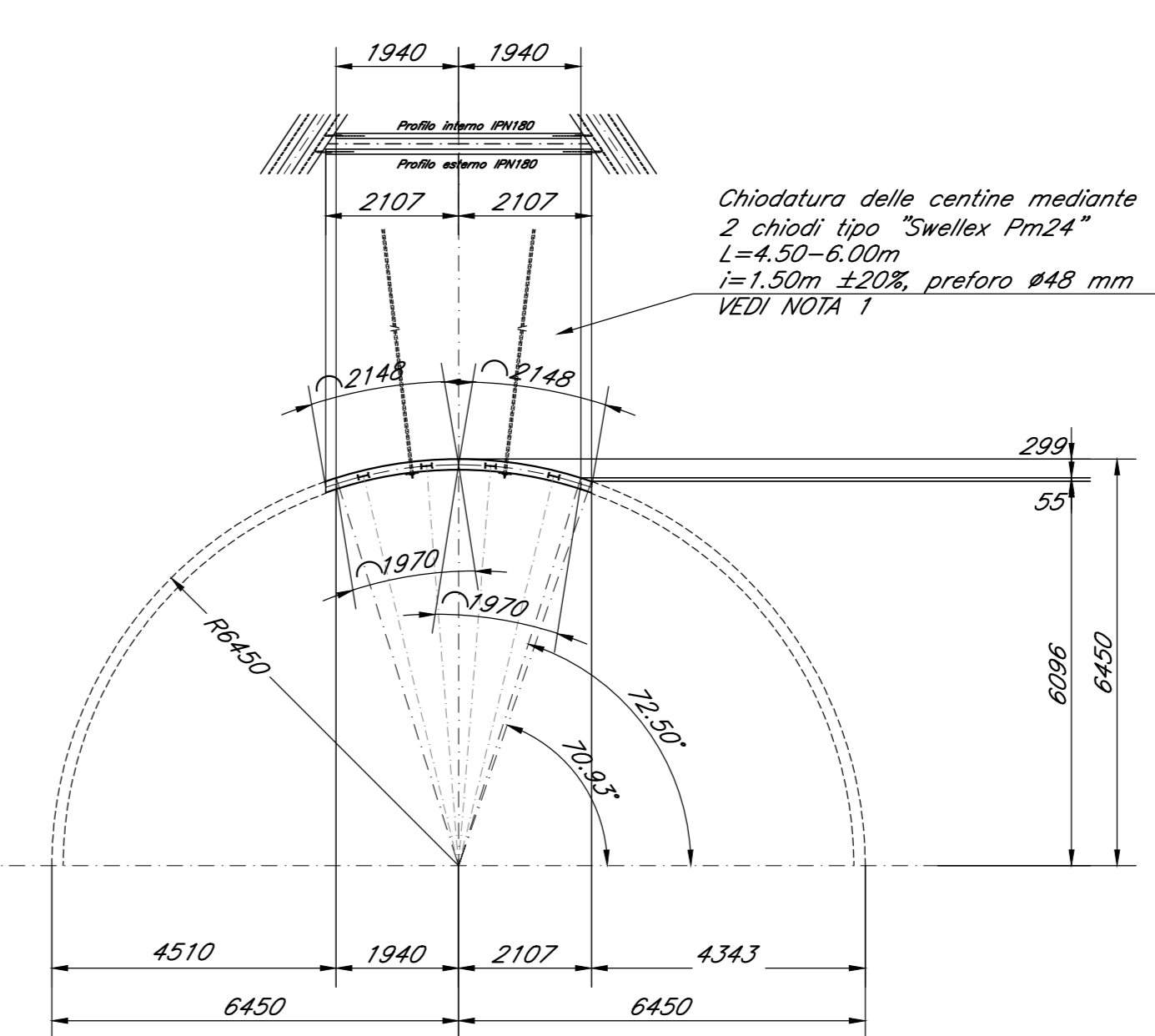
CENTINA IN3.5 scala 1:100



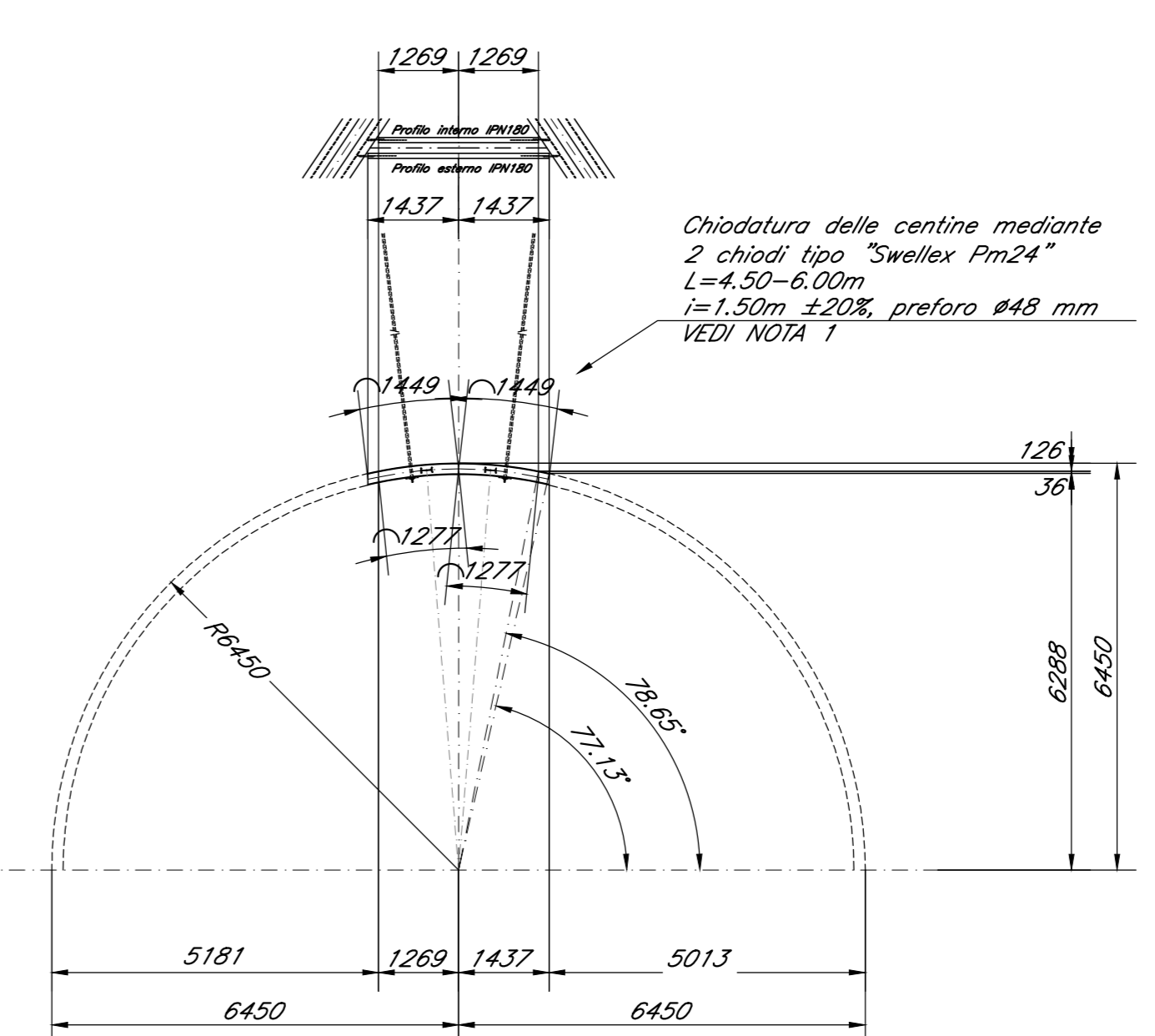
CENTINA IN3.6 scala 1:100



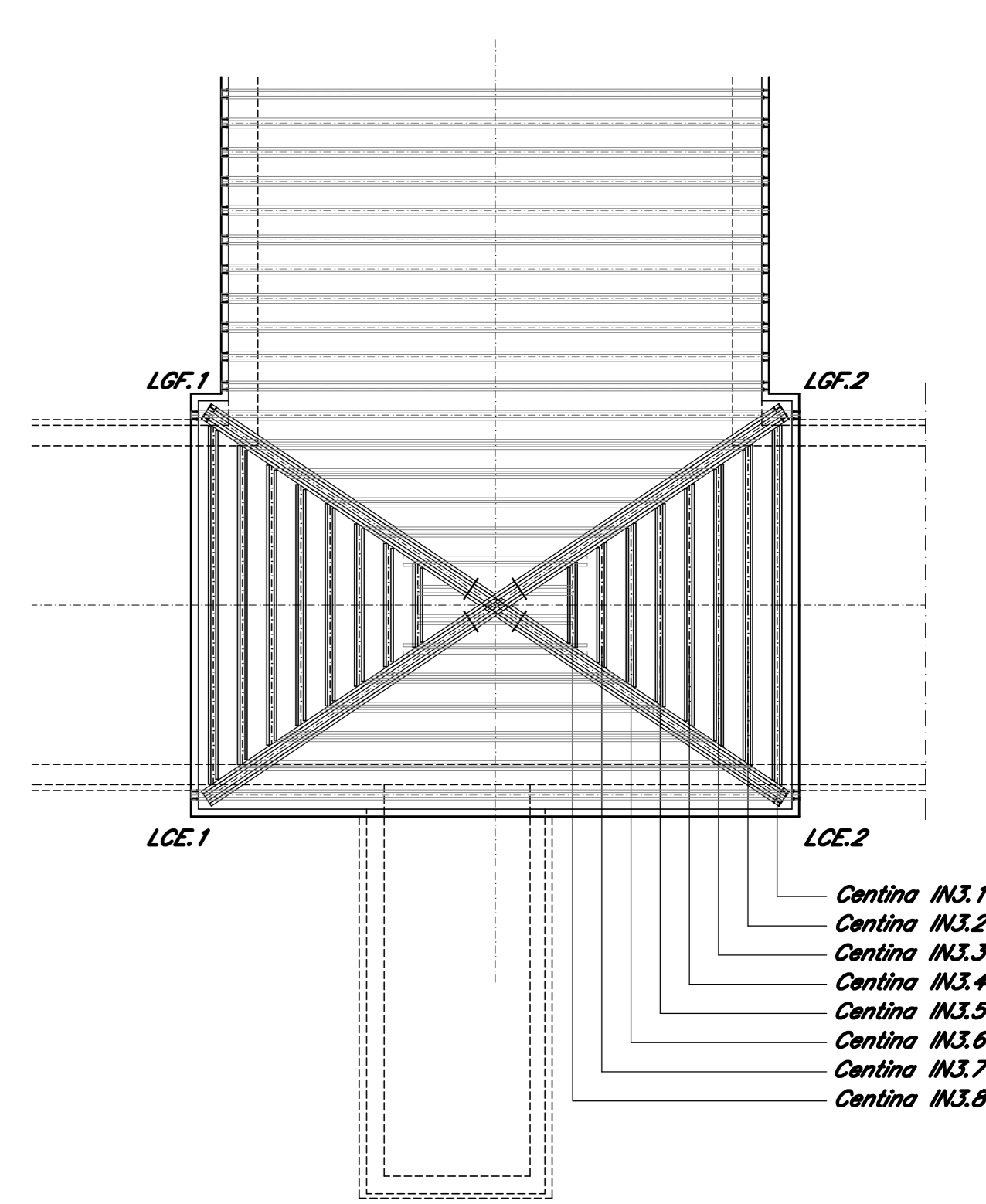
CENTINA IN3.7 scala 1:100



CENTINA IN3.8 scala 1:100



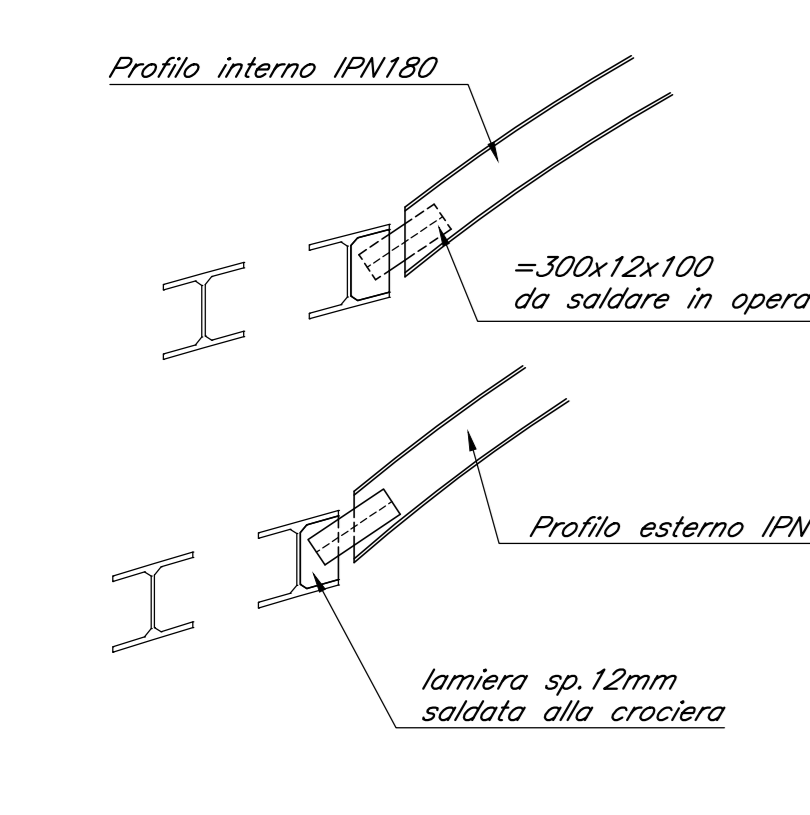
KEY PLAN CENTINE IN3 scala 1:200



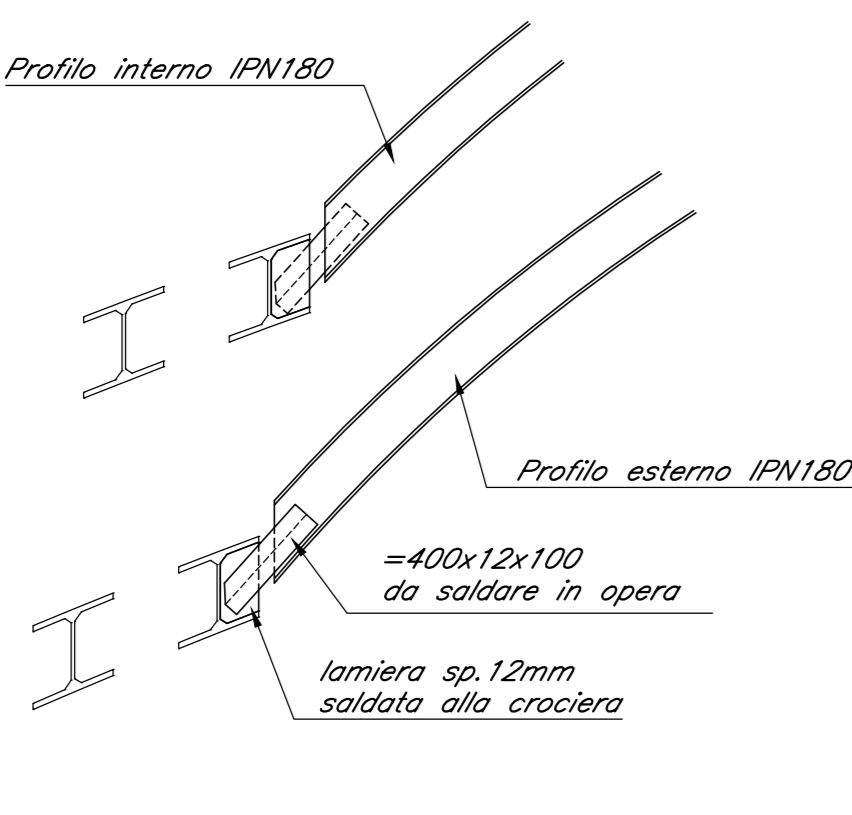
NOTA 1 - LUNGHEZZA CHIODATURE
LA LUNGHEZZA DELLE CHIODATURE DI 4.5m O 6.0m SARA' DEFINITA IN CORSO D'OPERA IN FUNZIONE DELLE CONDIZIONI GEOSTRUTTURALI RISCOOPERATE

NOTE GENERALI
Per le caratteristiche dei materiali si rimanda all'elaborato "Caratteristiche dei Materiali, note e prescrizioni" - IFIN 01 E ZZ SP GI0000 001 B

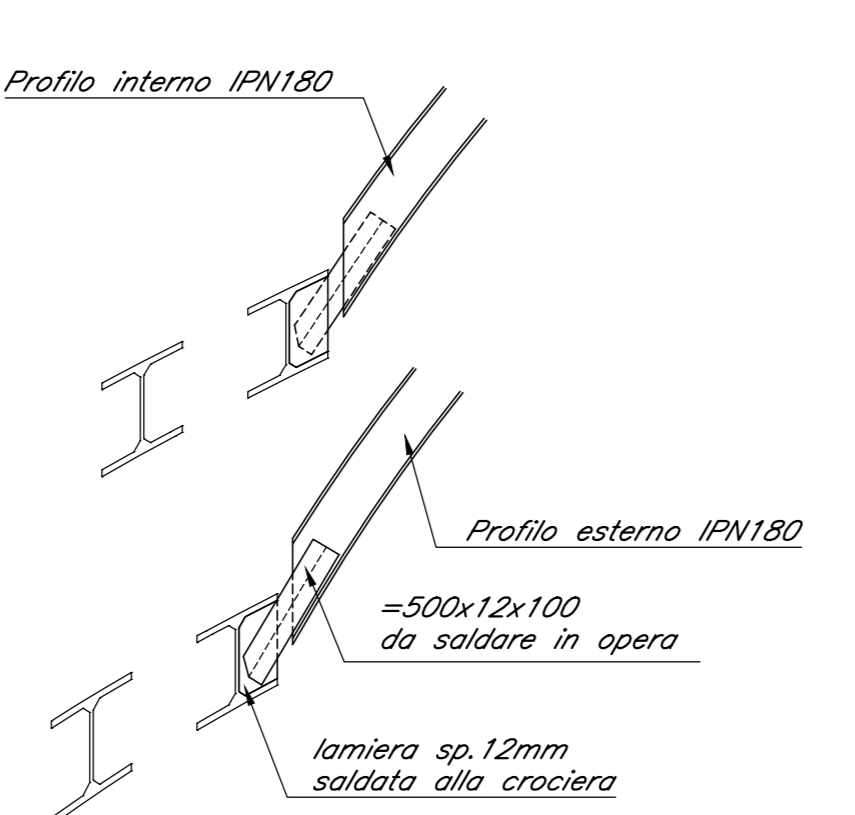
CENTINA IN3.4 scala 1:25



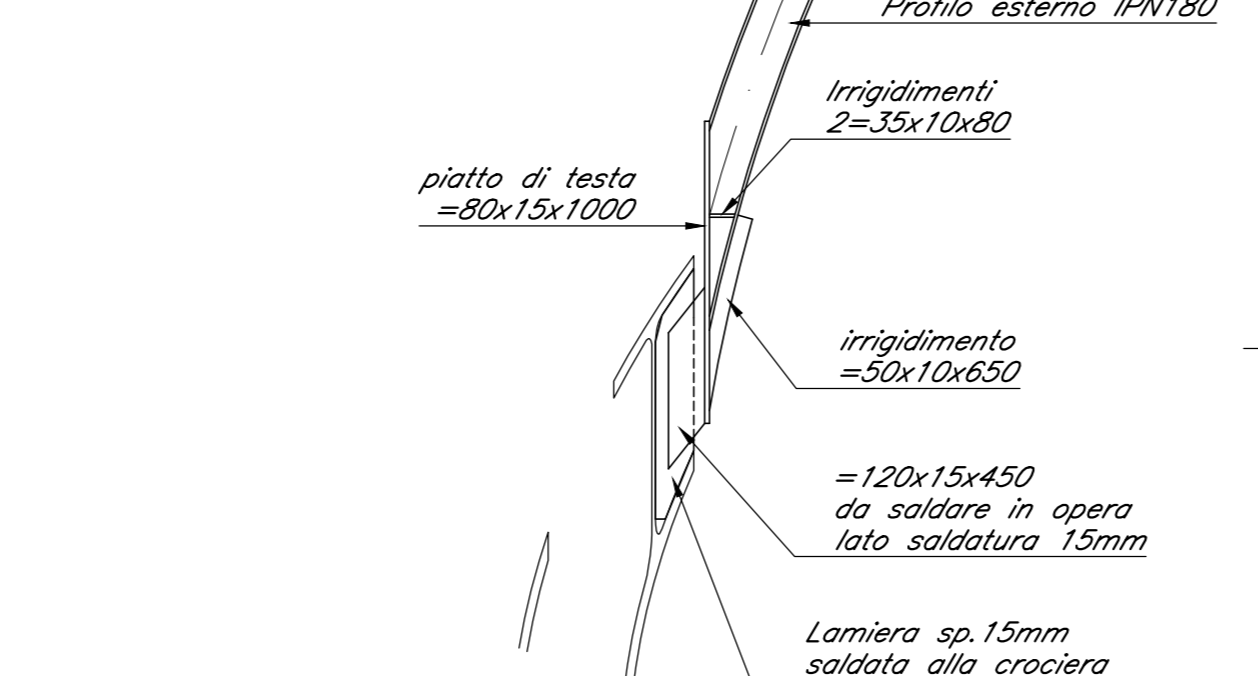
CENTINA IN3.3 scala 1:25



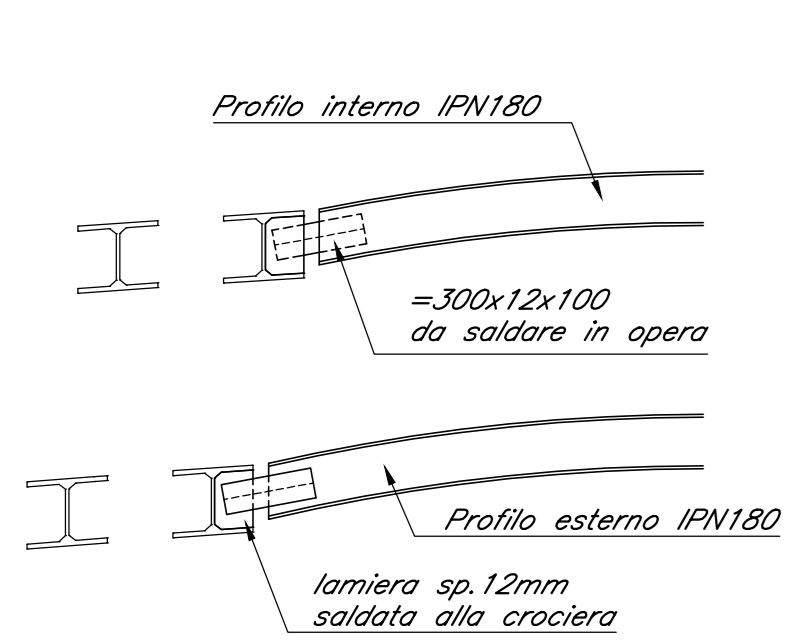
CENTINA IN3.2 scala 1:25



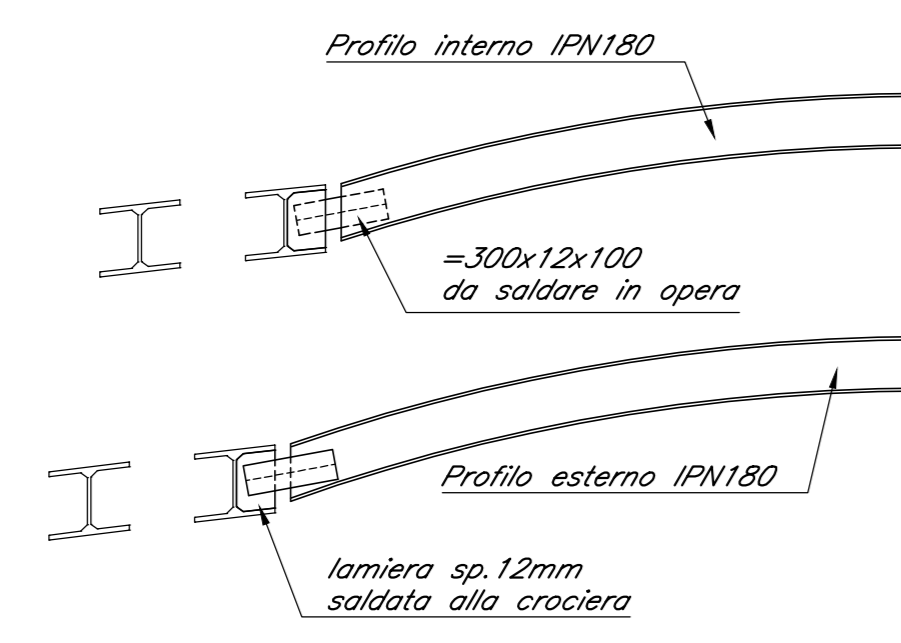
CENTINA IN3.1 scala 1:25



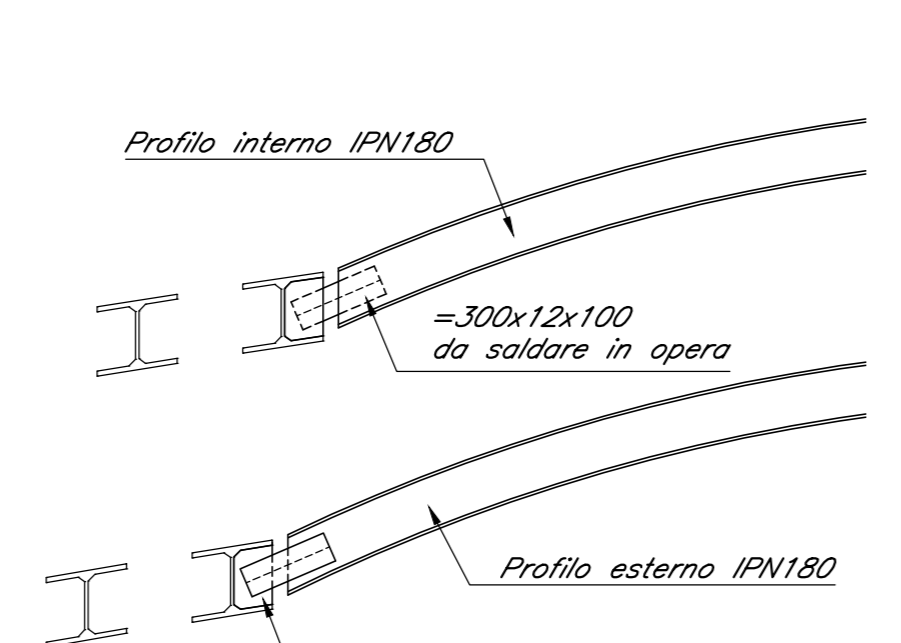
CENTINA IN3.8 scala 1:25



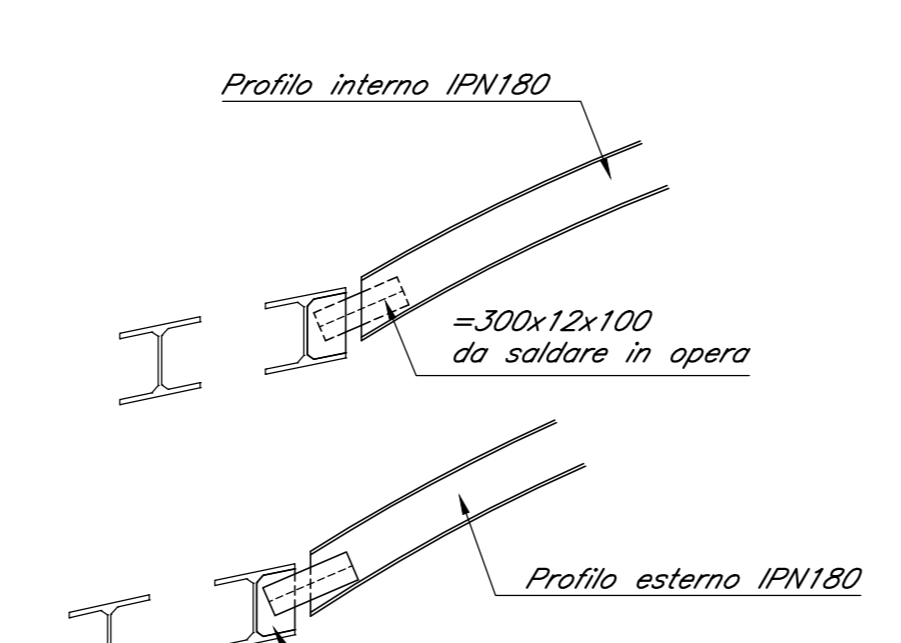
CENTINA IN3.7 scala 1:25



CENTINA IN3.6 scala 1:25



CENTINA IN3.5 scala 1:25



COMMITTENTE: **RFI** INFRASTRUTTURE FERROVIARIE ITALIANE

DIREZIONE LAVORI: **ITALFERR** GRUPPO FERROVIE DELLO STATO ITALIANE

APPALTATORE: **CONSORZIO CFT** PIZZAROTTI

PROGETTAZIONE: **CONSORZIO CFT** & DIRETTORE TECNICO Gianni C. Bianchi

PROGETTISTA: **ING. PIETRO MAZZOLI**

DIRETTORE DELLA PROGETTAZIONE: **ING. PIETRO MAZZOLI**

PROGETTO ESECUTIVO

ITINERARIO NAPOLI-BARI RADDOPPIO TRATTA CANCELLO-BENEVENTO LINEA ROMA-NAPOLI VIA CASSINO NEL COMUNE MADDALONI

USCITA DI EMERGENZA km 5+503.917

Innesto con la galleria di Linea a Galleria Finestra Sezione tipo IN3 - Carpenteria centine

APPALTATORE: **CONSORZIO CFT** & DIRETTORE TECNICO Gianni C. Bianchi

SCALA: 1:50

Rev.	Descrizione	Redatto	Data	Verificato	Data	Approvato	Data	Autorizzato Data
A	Emesso	P. Enzo	10/01/2018	G. Kalarina	10/01/2018	P. Mazzi	10/01/2018	G. Kalarina
B	Rev. Annotata IT 2008/18	P. Enzo	10/09/2018	G. Kalarina	10/09/2018	P. Mazzi	10/09/2018	

File: IFIN 0.11 E ZZ.BB.GN.08.0.0.008.B.dwg n. Elab.: 13/09/2018