

Metanodotto San Salvo – Biccari DN 500
(20"), MOP 64 bar e opere connesse
Rimozione condotte esistenti







Tav. Ra3

Legenda

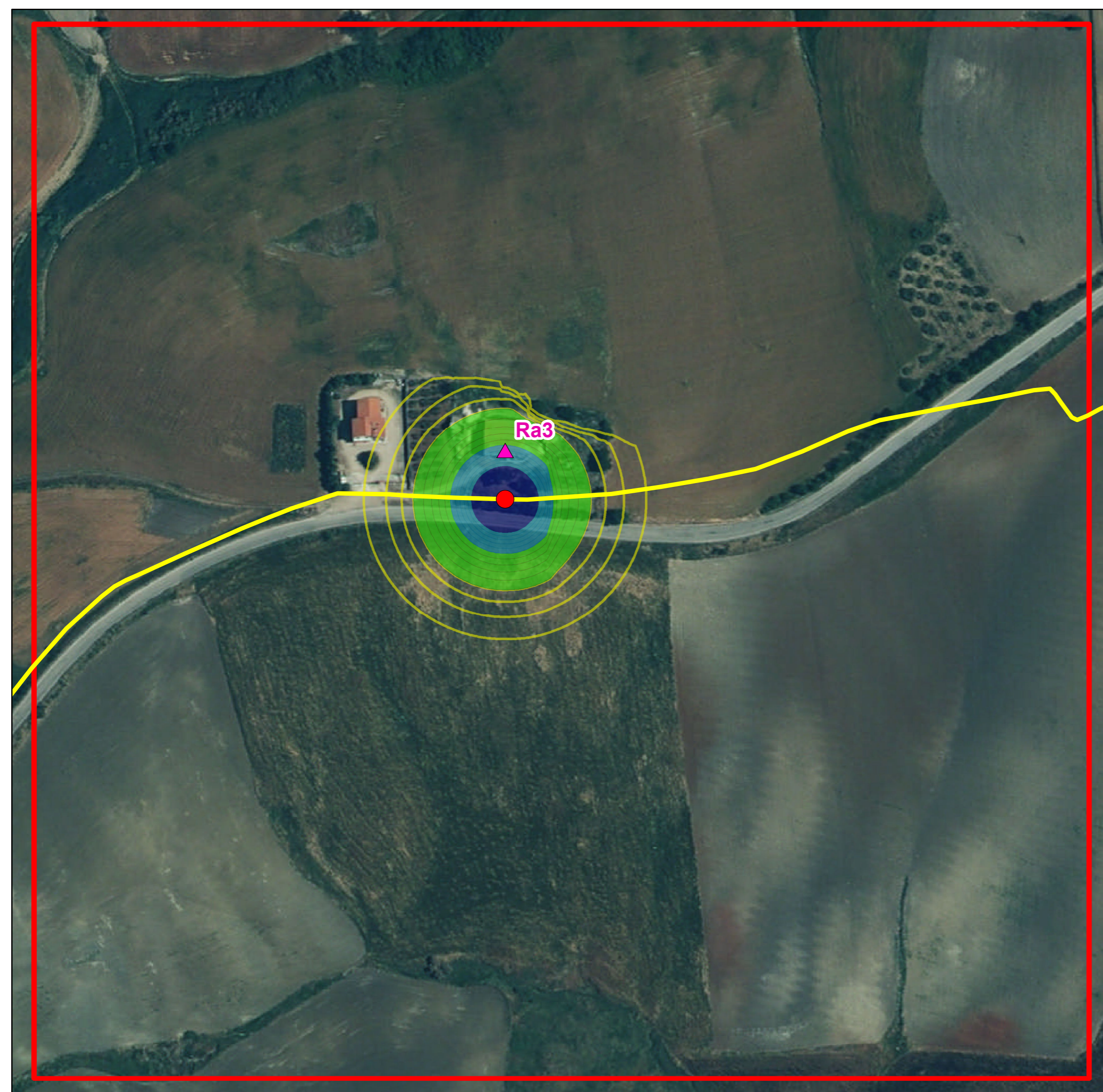
-  Recettori
-  Sorgenti Rumore Allacciamenti
-  Allacciamenti
-  Tracciato Principale
-  Area Studio Ra3

Ra3 - Leq Immissione Diurno

dB

-  < 60.0
-  60.1 - 65.0
-  65.1 - 70.0
-  > 70.1

0 25 50 100
Meters



Metanodotto San Salvo – Biccari DN 500
(20"), MOP 64 bar e opere connesse
Rimozione condotte esistenti







Tav. R1

Legenda

-  Recettori
-  Sorgenti Rumore Tracciato
-  Allacciamenti
-  Tracciato Principale
-  Area Studio R1

R1 - Leq Immissione Diurno

dB

-  < 60.0
-  60.1 - 65.0
-  65.1 - 70.0
-  > 70.1

0 25 50 100
Meters



Metanodotto San Salvo – Biccari DN 500
(20"), MOP 64 bar e opere connesse
Rimozione condotte esistenti







Tav. R2

Legenda

-  Recettori
-  Sorgenti Rumore Tracciato
-  Allacciamenti
-  Tracciato Principale
-  Area Studio R2

R2 - Leq Immissione Diurno

dB

-  < 60.0
-  60.1 - 65.0
-  65.1 - 70.0
-  > 70.1

0 25 50 100
Meters



Metanodotto San Salvo – Biccari DN 500
(20"), MOP 64 bar e opere connesse
Rimozione condotte esistenti







Tav. R3

Legenda

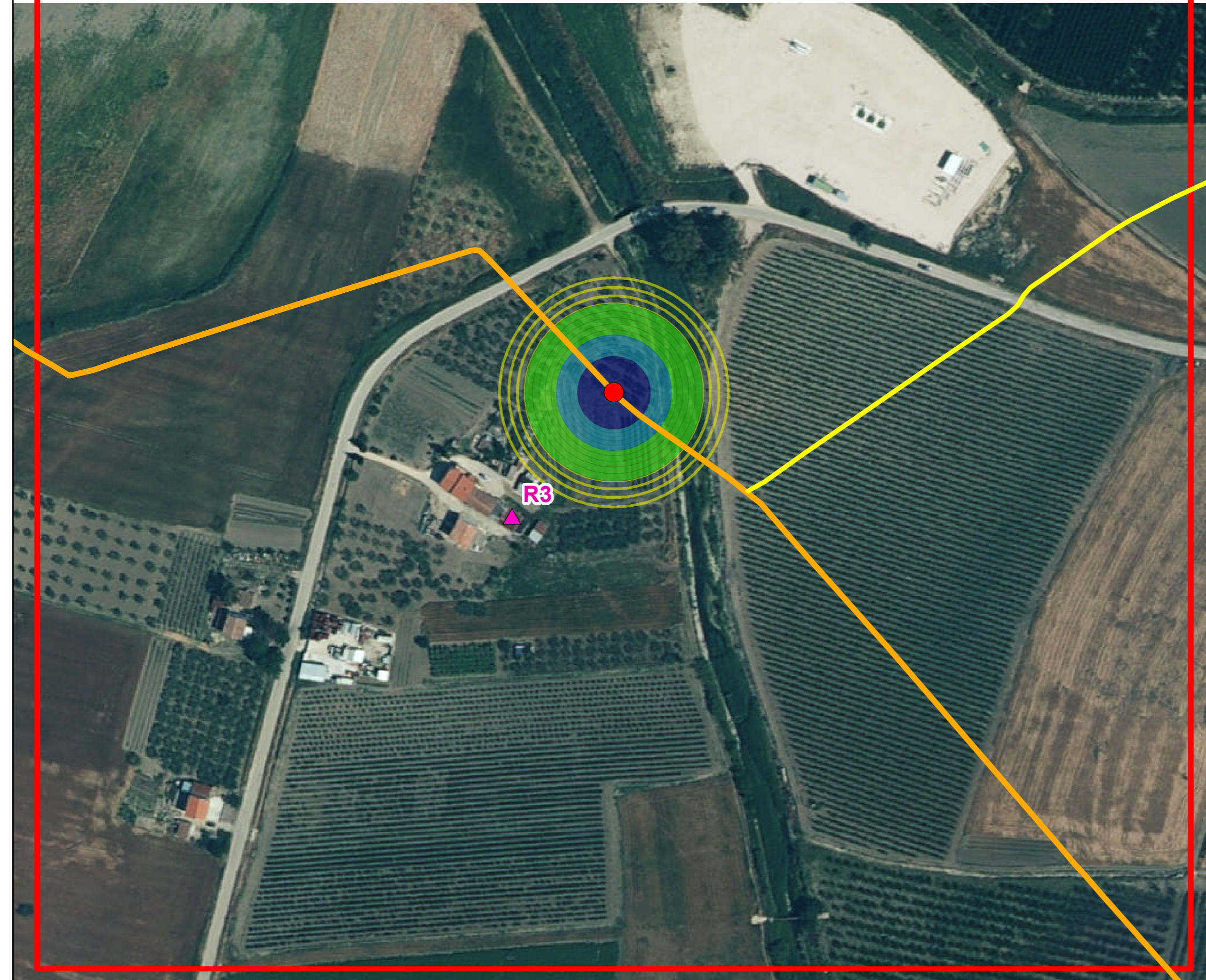
-  Recettori
-  Sorgenti Rumore Tracciato
-  Allacciamenti
-  Tracciato Principale
-  Area Studio R3

R3 - Leq Immissione Diurno

dB

-  < 60.0
-  60.1 - 65.0
-  65.1 - 70.0
-  > 70.1

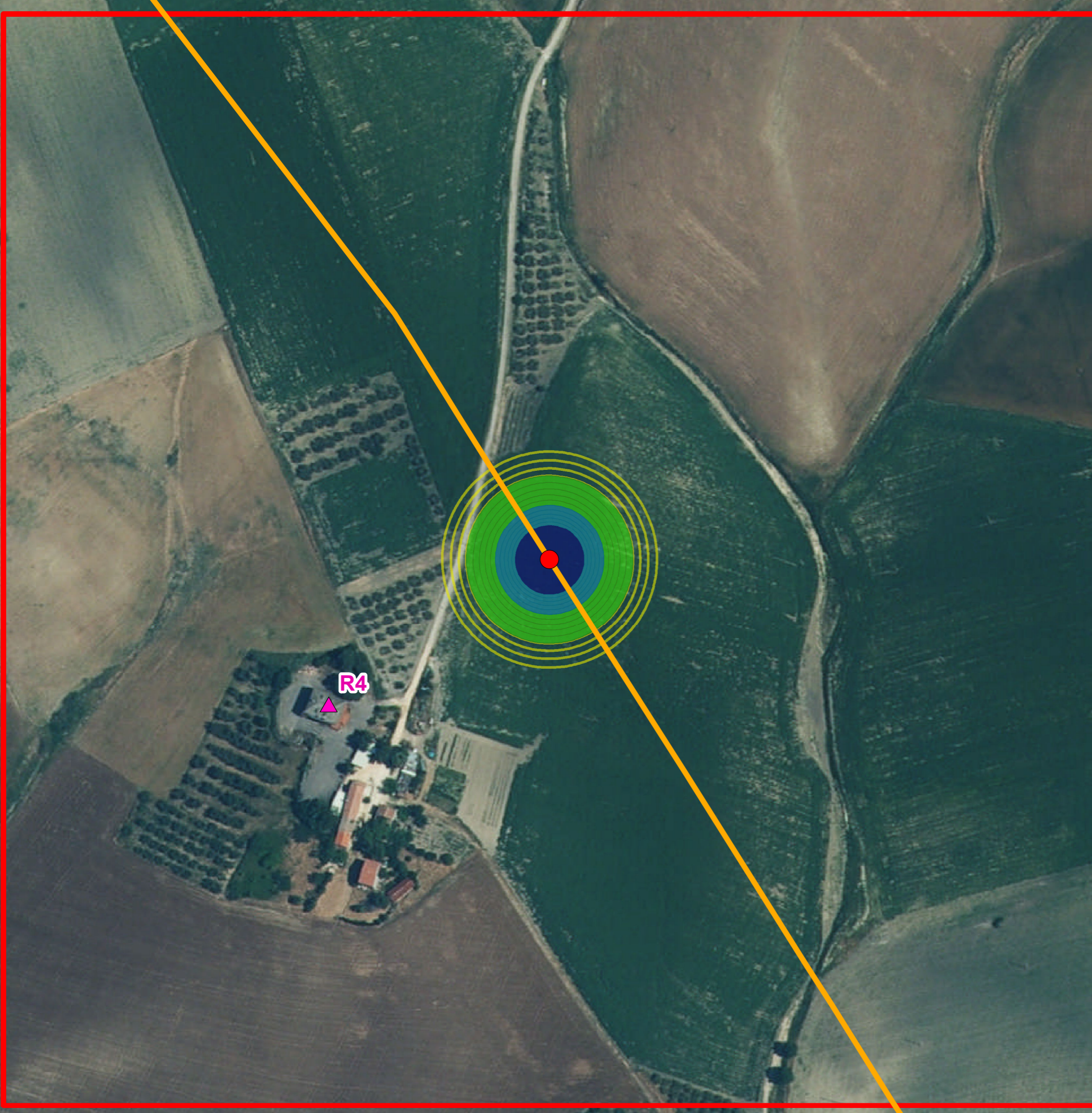
0 25 50 100
Meters



Metanodotto San Salvo – Biccari DN 500
(20"), MOP 64 bar e opere connesse
Rimozione condotte esistenti



Tav. R4



Legenda

- Recettori
- Sorgenti Rumore Tracciato
- Allacciamenti
- Tracciato Principale
- Area Studio R4

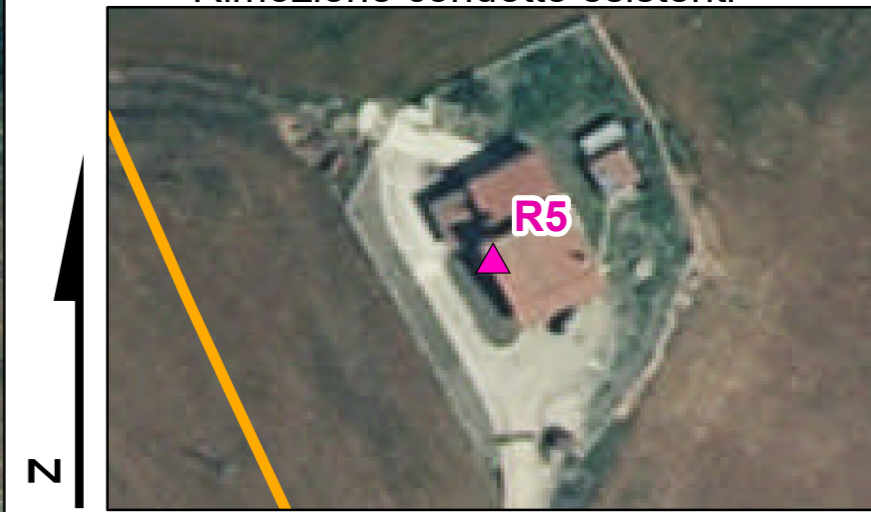
R4 - Leq Immissione Diurno

dB

- < 60.0
- 60.1 - 65.0
- 65.1 - 70.0
- > 70.1



Metanodotto San Salvo – Biccari DN 500
(20"), MOP 64 bar e opere connesse
Rimozione condotte esistenti







Tav. R5

Legenda

-  Recettori
-  Sorgenti Rumore Tracciato
-  Allacciamenti
-  Tracciato Principale
-  Area Studio R5

R5 - Leq Immissione Diurno

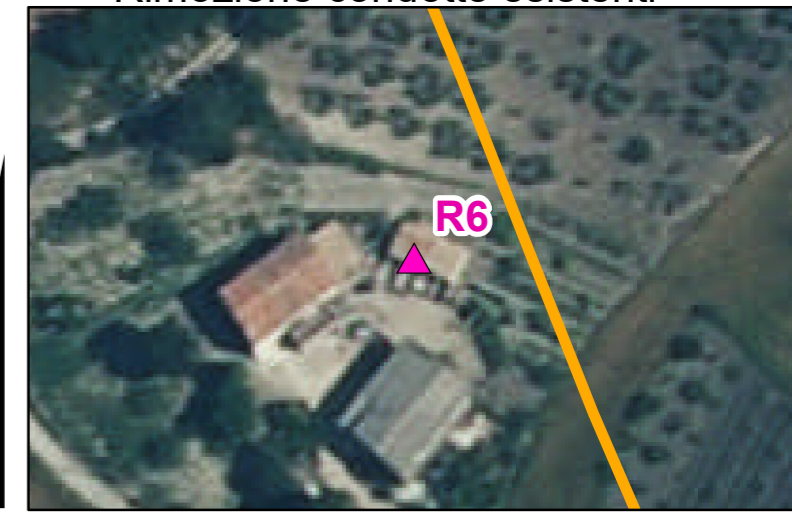
dB

-  < 60.0
-  60.1 - 65.0
-  65.1 - 70.0
-  > 70.1

0 25 50 100
Meters



Metanodotto San Salvo – Biccari DN 500
(20"), MOP 64 bar e opere connesse
Rimozione condotte esistenti







Tav. R6

Legenda

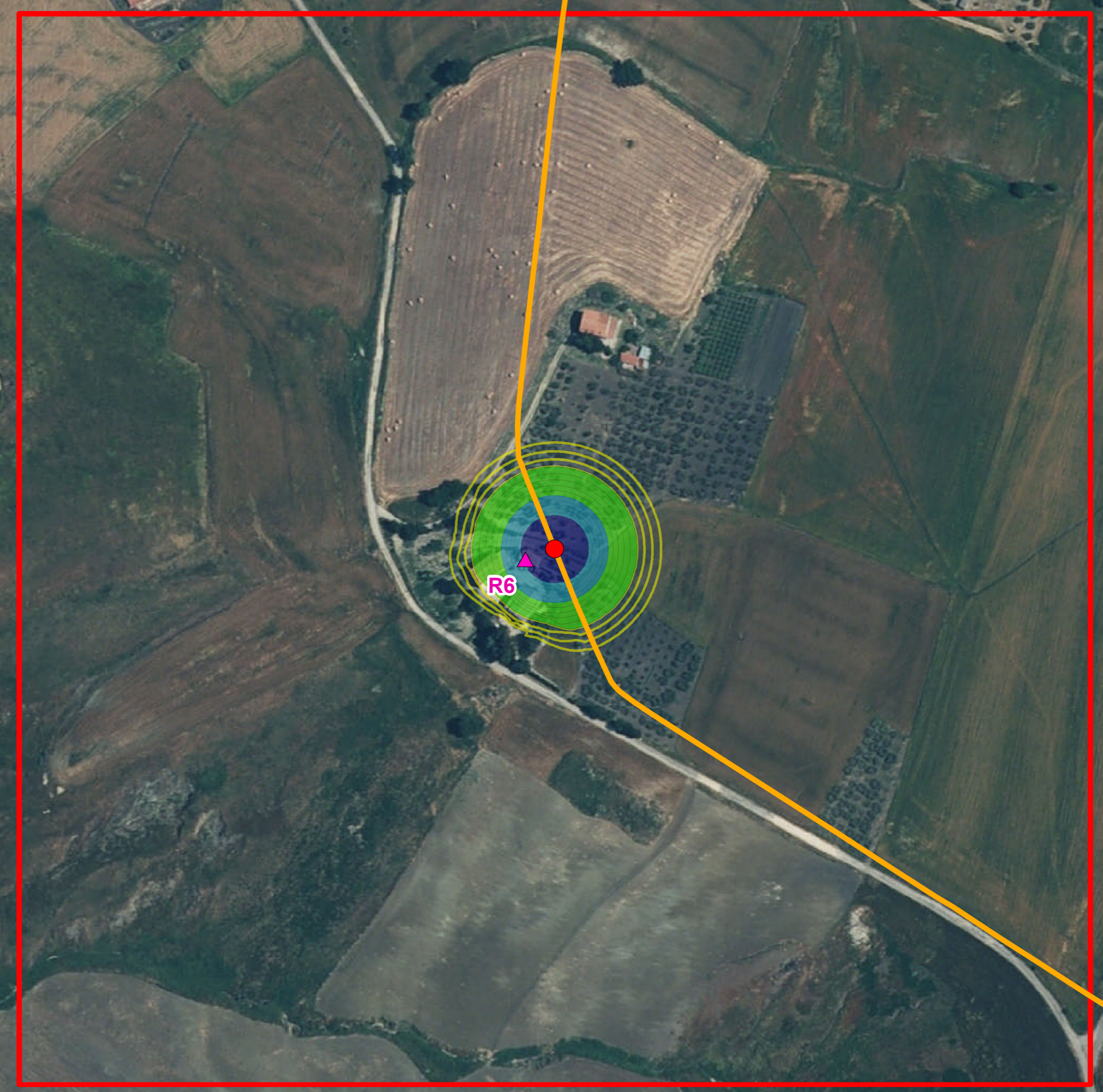
-  Recettori
-  Sorgenti Rumore Tracciato
-  Allacciamenti
-  Tracciato Principale
-  Area Studio R6

R6 - Leq Immissione Diurno

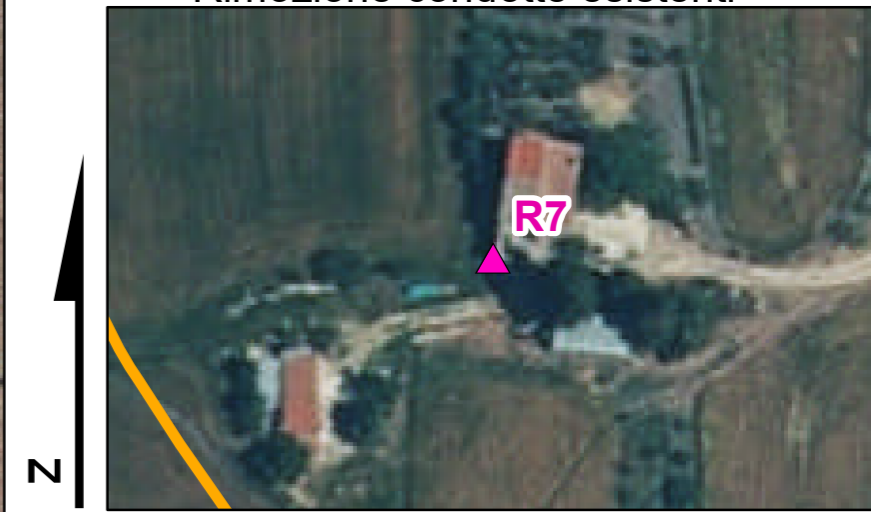
dB

-  < 60.0
-  60.1 - 65.0
-  65.1 - 70.0
-  > 70.1

0 25 50 100
Meters



Metanodotto San Salvo – Biccari DN 500
(20"), MOP 64 bar e opere connesse
Rimozione condotte esistenti



Tav. R7



Legenda

- ▲ Recettori
- Sorgenti Rumore Allacciamenti
- Allacciamenti
- Tracciato Principale
- Area Studio R7

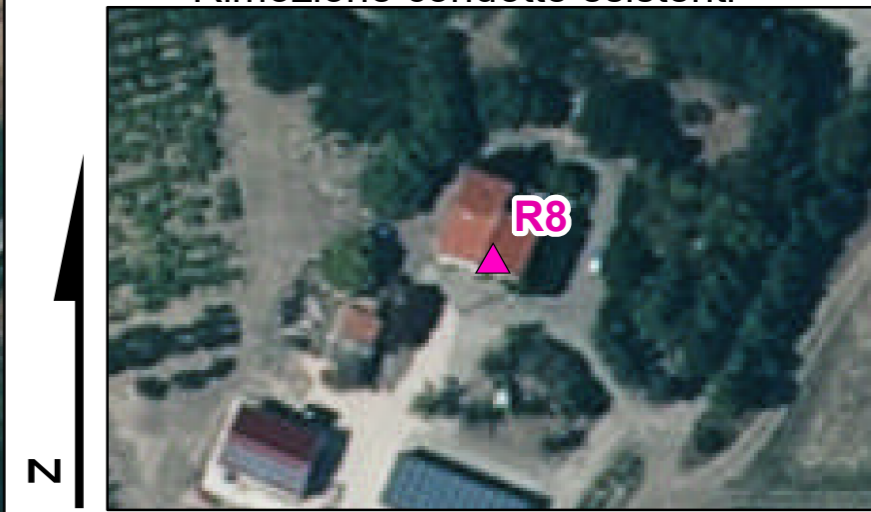
R7 - Leq Immissione Diurno

dB

- < 60.0
- 60.1 - 65.0
- 65.1 - 70.0
- > 70.1



Metanodotto San Salvo – Biccari DN 500
(20"), MOP 64 bar e opere connesse
Rimozione condotte esistenti







Tav. R8

Legenda

-  Recettori
-  Sorgenti Rumore Allacciamenti
-  Allacciamenti
-  Tracciato Principale
-  Area Studio R8

R8 - Leq Immissione Diurno

dB

-  < 60.0
-  60.1 - 65.0
-  65.1 - 70.0
-  > 70.1

0 25 50 100
Meters



Metanodotto San Salvo – Biccari DN 500
(20"), MOP 64 bar e opere connesse
Rimozione condotte esistenti



Tav. R9







Legenda

-  Recettori
-  Sorgenti Rumore Tracciato
-  Allacciamenti
-  Tracciato Principale
-  Area Studio R9

R9 - Leq Immissione Diurno

dB

-  < 60.0
-  60.1 - 65.0
-  65.1 - 70.0
-  > 70.1





0 25 50 100
Meters

Metanodotto San Salvo – Biccari DN 500
(20"), MOP 64 bar e opere connesse
Rimozione condotte esistenti







Tav. Ra1

Legenda

-  Recettori
-  Sorgenti Rumore Allacciamenti
-  Allacciamenti
-  Tracciato Principale
-  Area Studio Ra1

Ra1 - Leq Immissione Diurno

dB

-  < 60.0
-  60.1 - 65.0
-  65.1 - 70.0
-  > 70.1

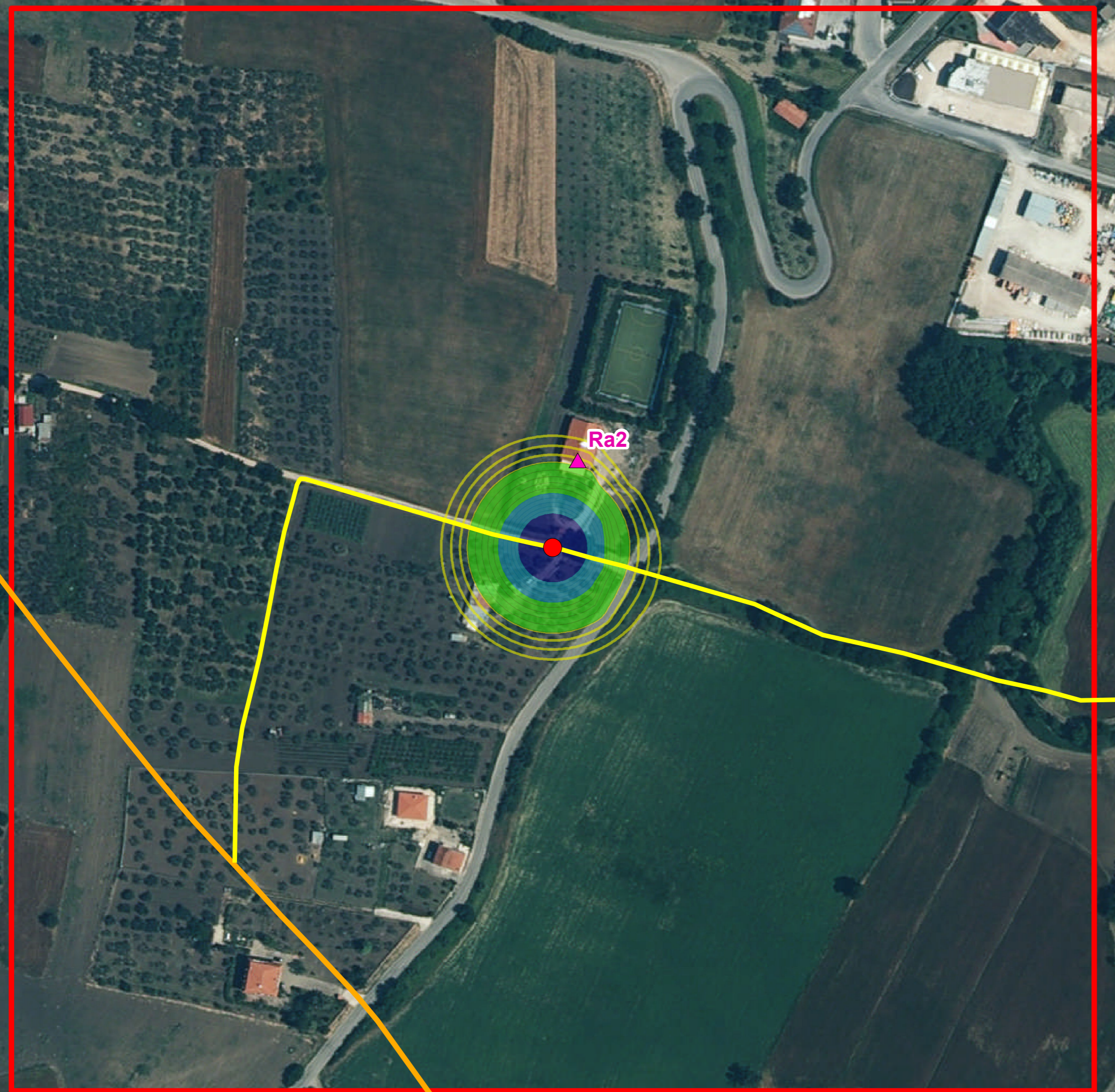
0 25 50 100
Meters








Metanodotto San Salvo – Biccari DN 500
(20"), MOP 64 bar e opere connesse
Rimozione condotte esistenti



Tav. Ra2







Legenda

-  Recettori
-  Sorgenti Rumore Allacciamenti
-  Allacciamenti
-  Tracciato Principale
-  Area Studio Ra2

Ra2 - Leq Immissione Diurno

dB

-  < 60.0
-  60.1 - 65.0
-  65.1 - 70.0
-  > 70.1

