


Metanodotto San Salvo – Biccari DN 500  
(20"), MOP 64 bar e opere connesse  
Rimozione condotte esistenti









Tav Ra3 - PM10

**Legenda**

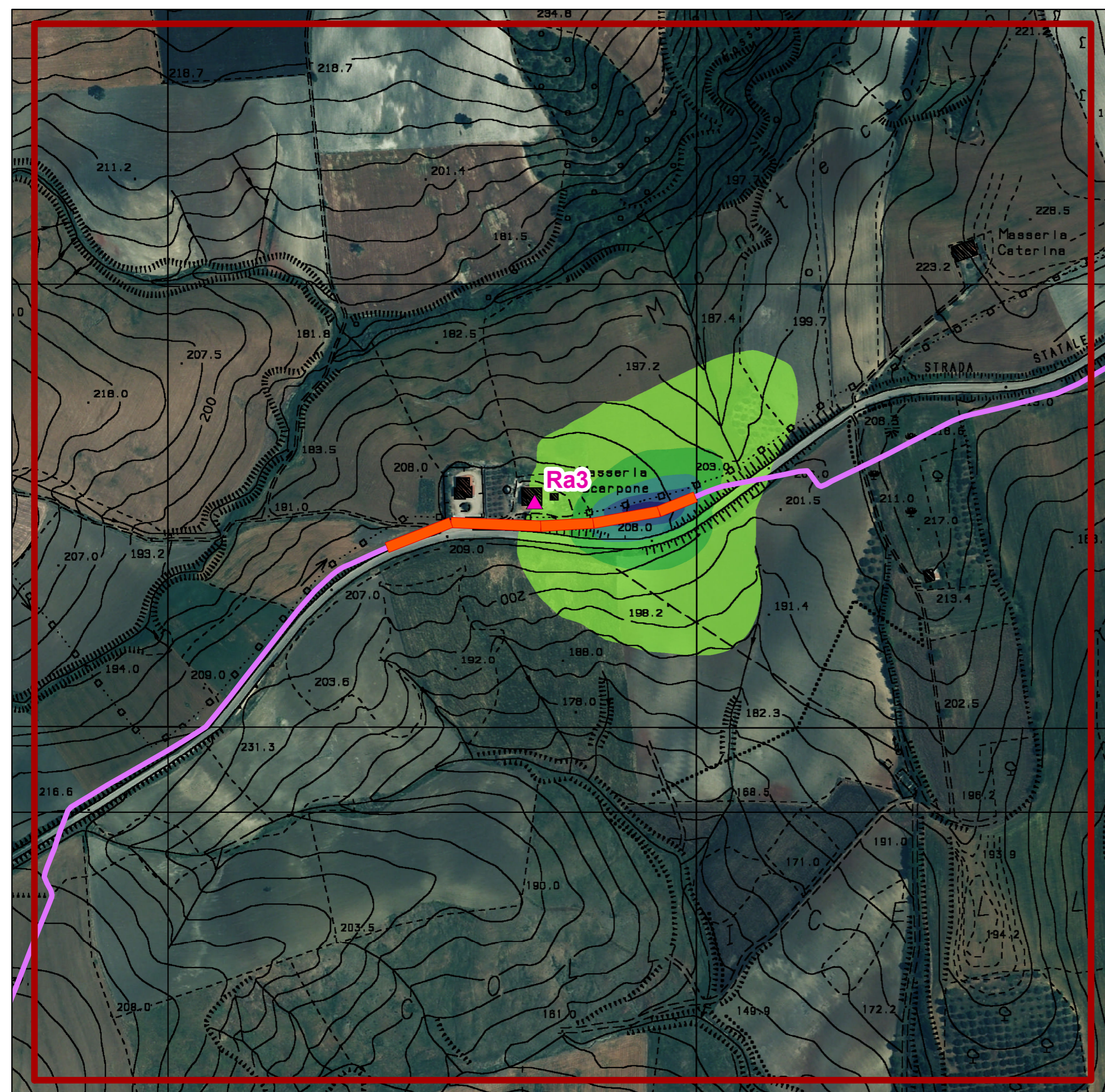
-  Recettori
-  Area di studio Ra3
-  Sorgente Ra3
-  Allacciamenti
-  Tracciato Principale

**Ra3 - PM10 - 90.4°perc. Conc 24h**

**µg/m<sup>3</sup>**

-  15.94 - 17
-  17.01 - 20
-  20.01 - 25
-  25.01 - 30
-  30.01 - 35
-  35.01 - 40.29

0 75 150 300 Meters





Metanodotto San Salvo – Biccari DN 500  
(20"), MOP 64 bar e opere connesse  
Rimozione condotte esistenti









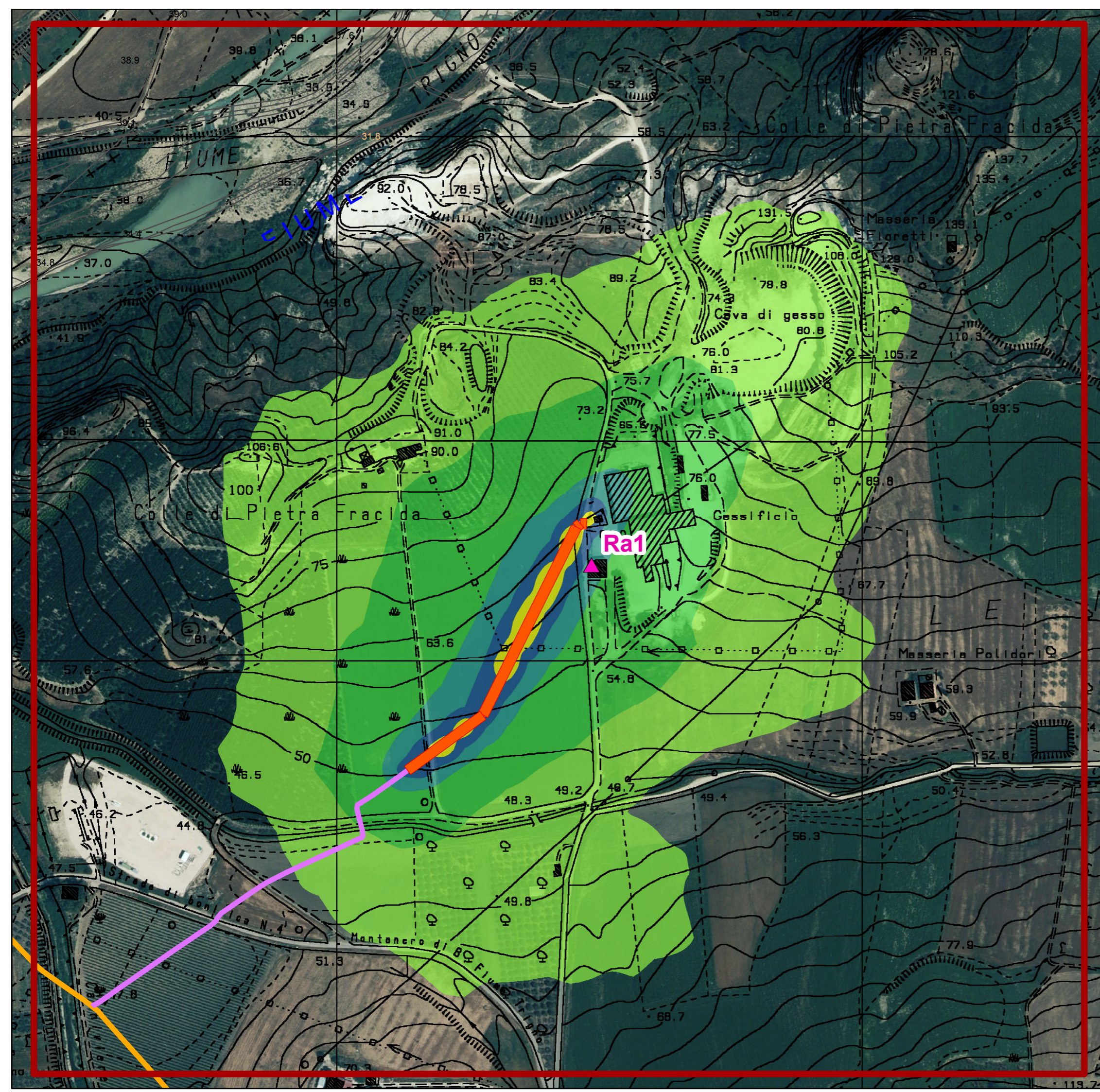
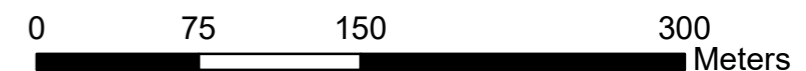
Tav Ra1 - NO2

**Legenda**

-  Recettori
-  Area di studio Ra1
-  Sorgente Ra1
-  Allacciamenti
-  Tracciato Principale

**Ra1- NO2 - 99.8° perc. Conc 1h  
µg/m3**

-  22.4 - 35
-  35.01 - 50
-  50.01 - 100
-  100.01 - 150
-  150.01 - 200
-  >200





Metanodotto San Salvo – Biccari DN 500  
(20"), MOP 64 bar e opere connesse  
Rimozione condotte esistenti









Tav Ra1 - PM10

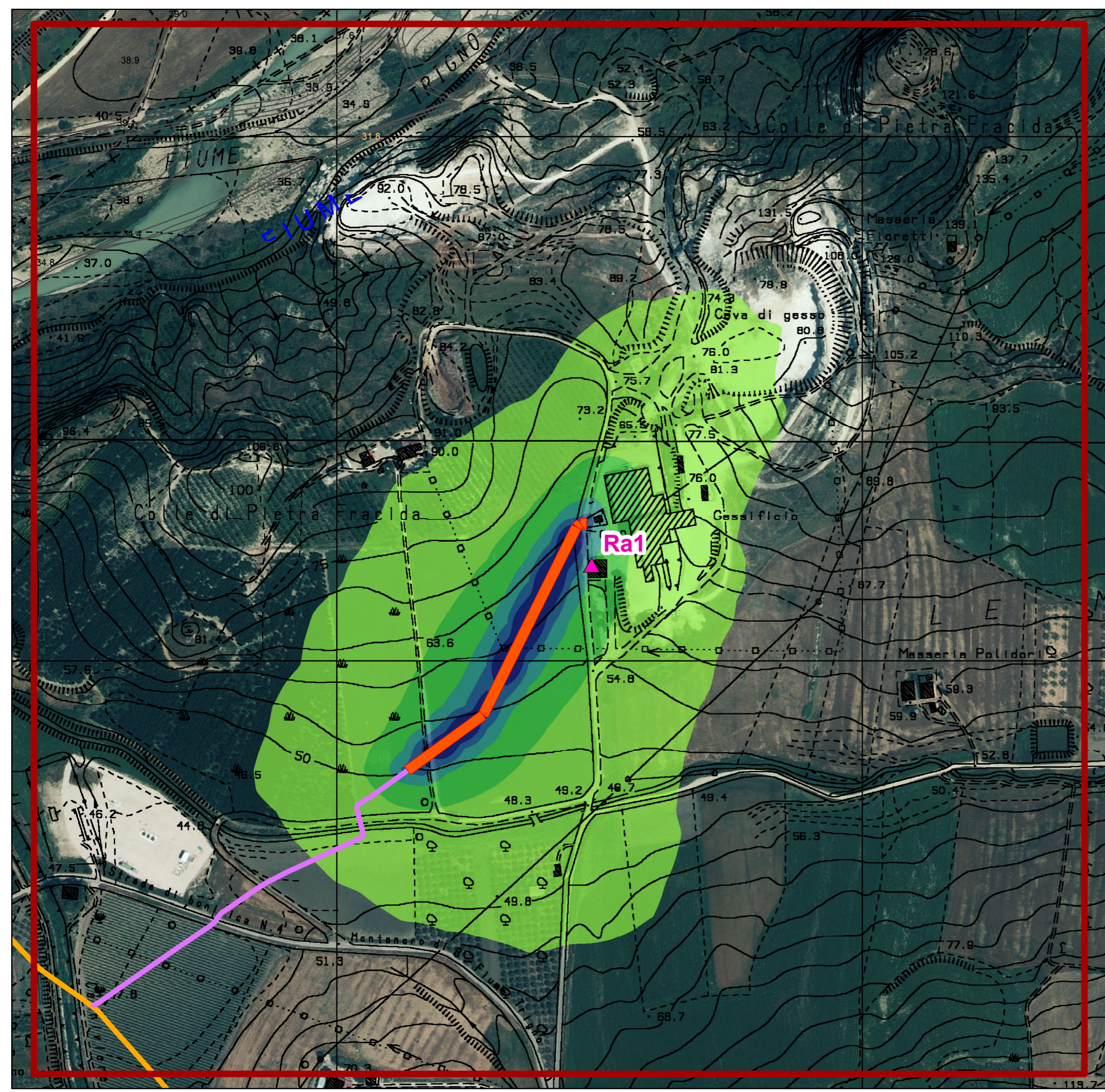
**Legenda**

-  Recettori
-  Area di studio Ra1
-  Sorgente Ra1
-  Allacciamenti
-  Tracciato Principale

**Ra1 - PM10 - 90.4°perc. Conc 24h**

**µg/m3**

-  15.92 - 17
-  17.01 - 20
-  20.01 - 25
-  25.01 - 30
-  30.01 - 35
-  35.01 - 51.56





Metanodotto San Salvo – Biccari DN 500  
(20"), MOP 64 bar e opere connesse  
Rimozione condotte esistenti









Tav Ra2 - NO2

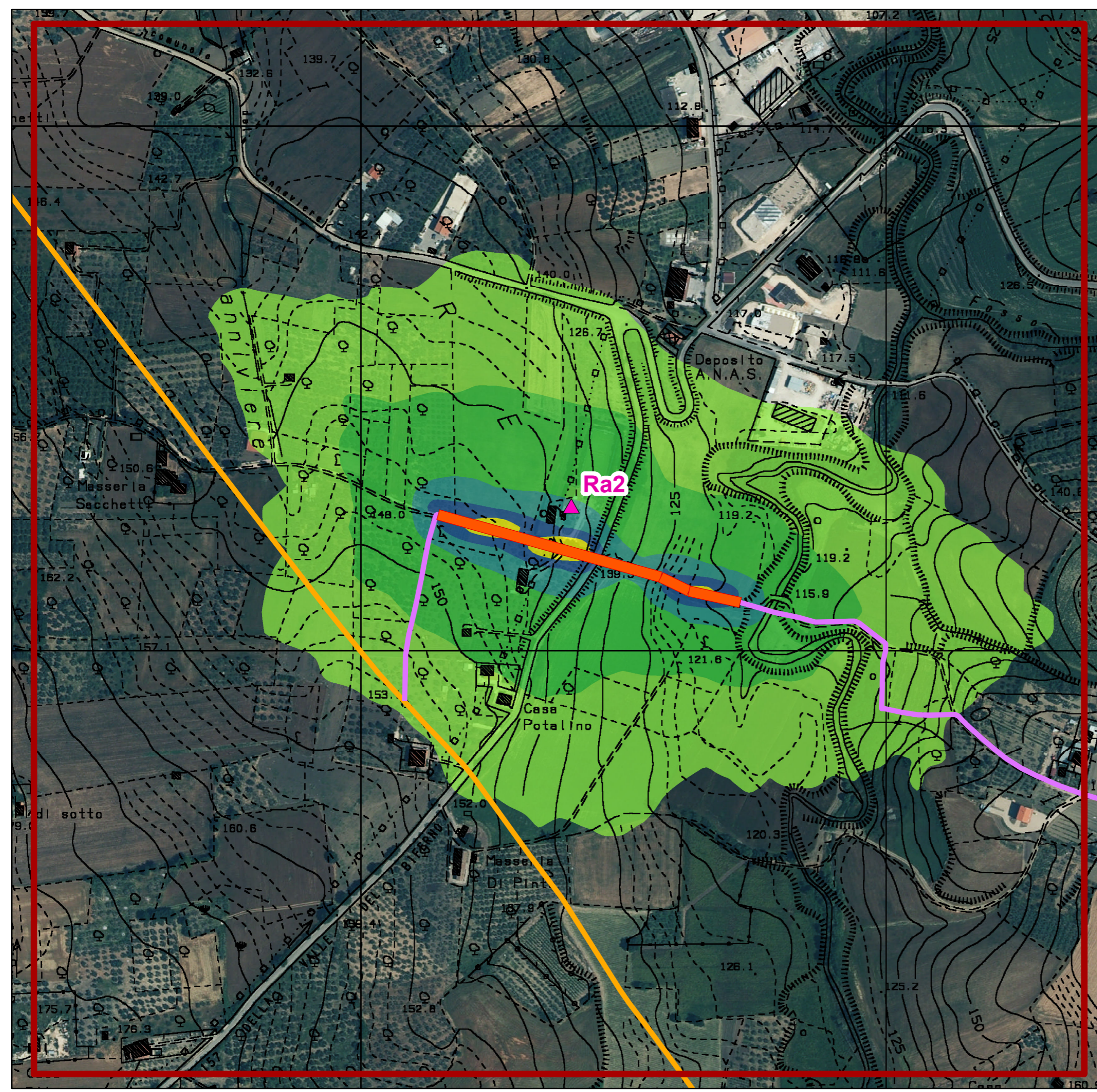
### Legenda

-  Recettori
-  Area di studio Ra2
-  Sorgente Ra2
-  Allacciamenti
-  Tracciato Principale

**Ra2 - NO2 - 99.8° perc. Conc 1h**

**µg/m3**

-  22.13 - 35
-  35.01 - 50
-  50.01 - 100
-  100.01 - 150
-  150.01 - 200
-  >200





Metanodotto San Salvo – Biccari DN 500  
(20"), MOP 64 bar e opere connesse  
Rimozione condotte esistenti







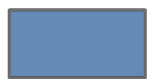

Tav Ra2 - PM10

### Legenda

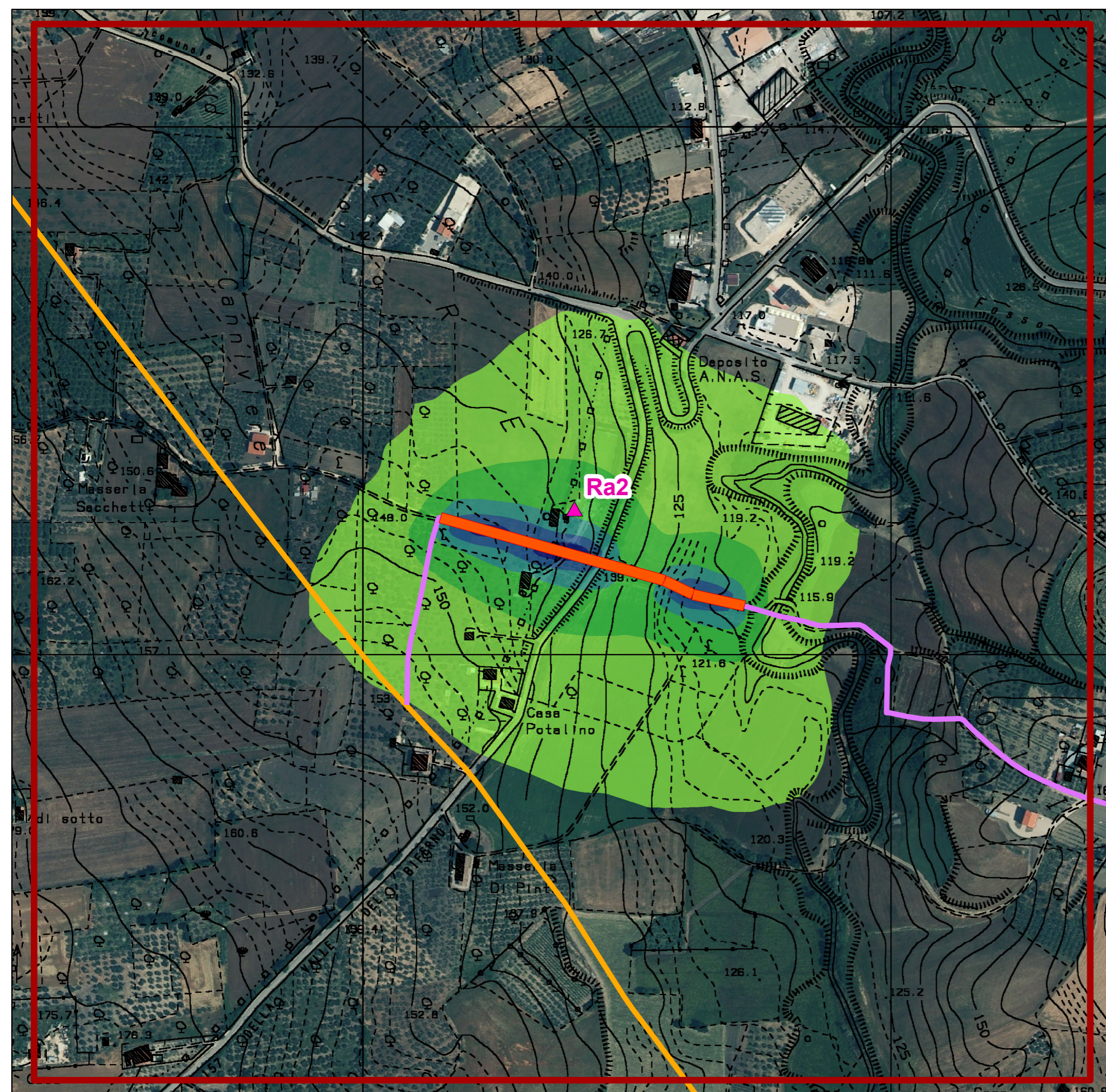
-  Recettori
-  Area di studio Ra2
-  Sorgente Ra2
-  Allacciamenti
-  Tracciato Principale

**Ra2 - PM10 - 90.4°perc. Conc 24h**

**µg/m<sup>3</sup>**

-  15.93 - 17
-  17.01 - 20
-  20.01 - 25
-  25.01 - 30
-  30.01 - 35
-  35.01 - 40.61

0 75 150 300 Meters





Metanodotto San Salvo – Biccari DN 500  
(20"), MOP 64 bar e opere connesse  
Rimozione condotte esistenti









Tav Ra3 - NO2

**Legenda**

-  Recettori
-  Area di studio Ra3
-  Sorgente Ra3
-  Allacciamenti
-  Tracciato Principale

**Ra3 - NO2 - 99.8° perc. Conc 1h**

**µg/m3**

-  20.6 - 35
-  35.01 - 50
-  50.01 - 100
-  100.01 - 150
-  150.01 - 200
-  >200

0 75 150 300 Meters

