

Direzione Progettazione e Realizzazione Lavori

Collegamento viario "Pedemontana piemontese"
 tra la A4 e la A26
 (Santhia'–Biella–Gattinara–Ghemme)
 Collegamento viario Masserano–Ghemme

PROGETTO DEFINITIVO

COD.

PROGETTAZIONE: ANAS - DIREZIONE PROGETTAZIONE E REALIZZAZIONE LAVORI

I PROGETTISTI:

ing. Vincenzo Marzi
 Ordine Ing. di Bari n.3594
ing. Achille Devitofranceschi
 Ordine Ing. di Roma n.19116

IL GEOLOGO:

geol. Serena Majetta
 Ordine Geol. del Lazio n.928

RESPONSABILE DEL SIA

arch. Giovanni Magarò
 Ordine Arch. di Roma n.16183

IL COORDINATORE PER LA SICUREZZA IN FASE DI PROGETTAZIONE

geom. Fabio Quondam

VISTO: IL RESPONSABILE DEL PROCEDIMENTO :

ing. Nicolò Canepa

ARCHEOLOGIA

Stadium Sas di Frida Ocelli
Dott.ssa Frida Ocelli
 Elenco MIBACT n. 190



PROTOCOLLO




DATA

STUDI GENERALI
Piano Indagini Archeologiche

Planimetrie ubicazione indagini

CODICE PROGETTO	NOME FILE	REVISIONE	SCALA:
PROGETTO LIV. PROG. N. PROG. DPT007 D 1701	T00SG01GENPU01_A.dwg	A	1:5.000
	CODICE ELAB. T00SG01GENPU01		
C			
B			
A	EMISSIONE PRELIMINARE PER CONTROLLI EX D.Lgs. 35/2011	Ottobre 2018	
REV.	DESCRIZIONE	DATA	REDATTO VERIFICATO APPROVATO

LEGENDA

-  Prospezioni geofisiche
-  Prospezioni geofisiche (bosco)
-  Da sottoporre a sondaggio dopo disboscamenti

S. Giacomo del Bosco

IN01 - ATTRAVERSAMENTO S.1

setto 10

setto 8

setto 5

setto 7

setto 9

lo Chalet

setto 1

setto 6

Fornace

setto 4

setto 3

C.ve di argilla

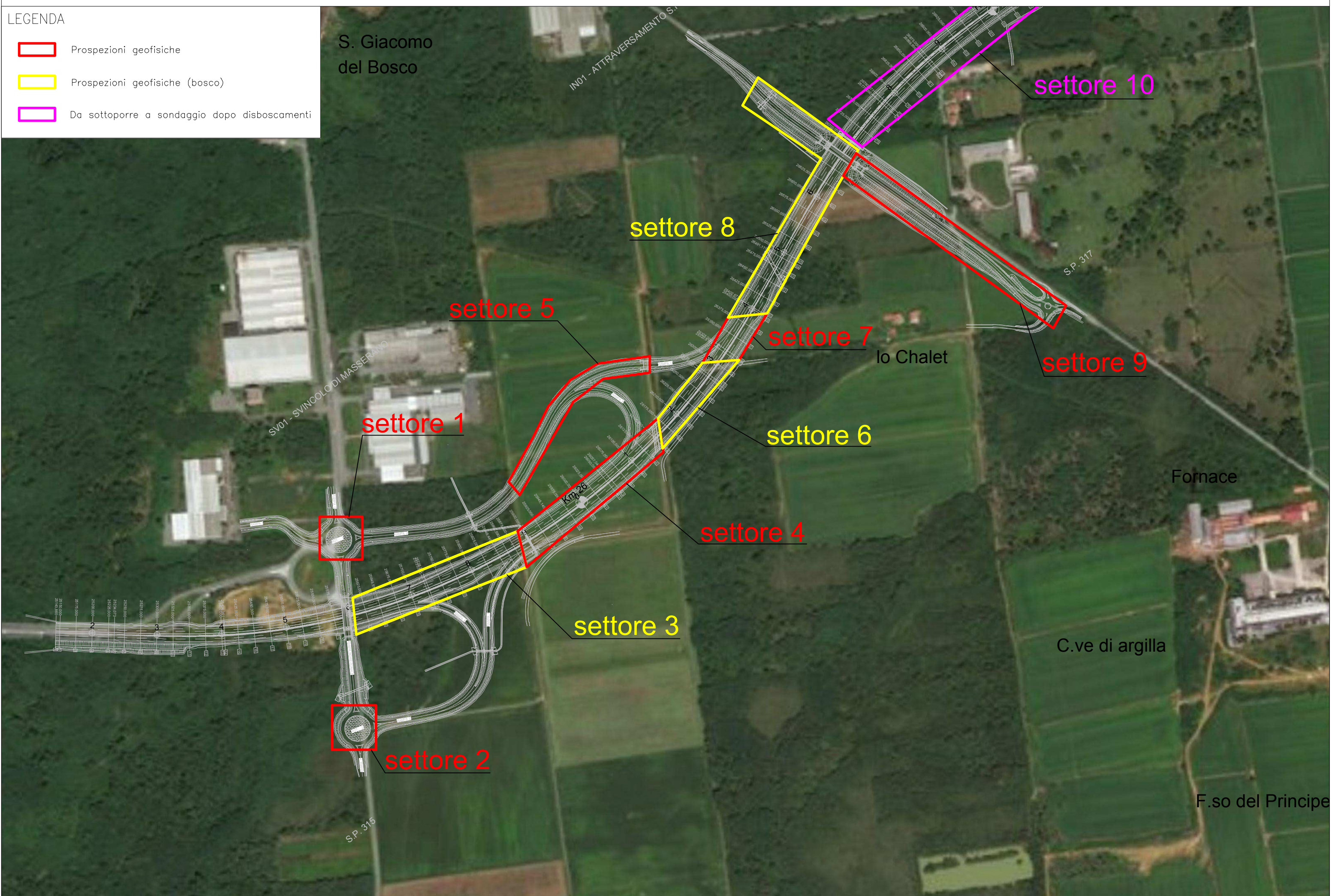
setto 2

F.so del Principe




SV01 - SVINCOLO DI MASSERANO

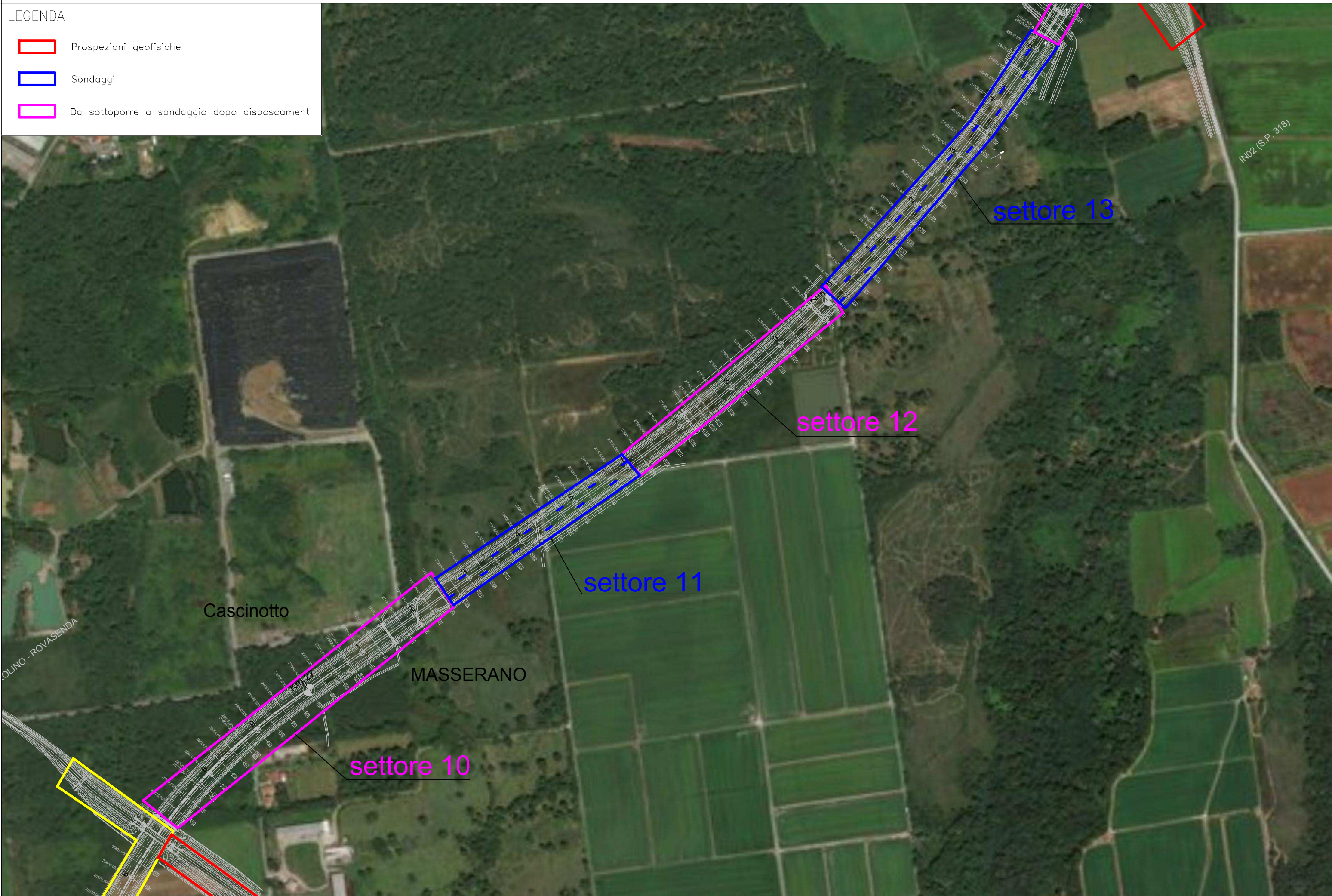
S.P. 315

S.P. 317







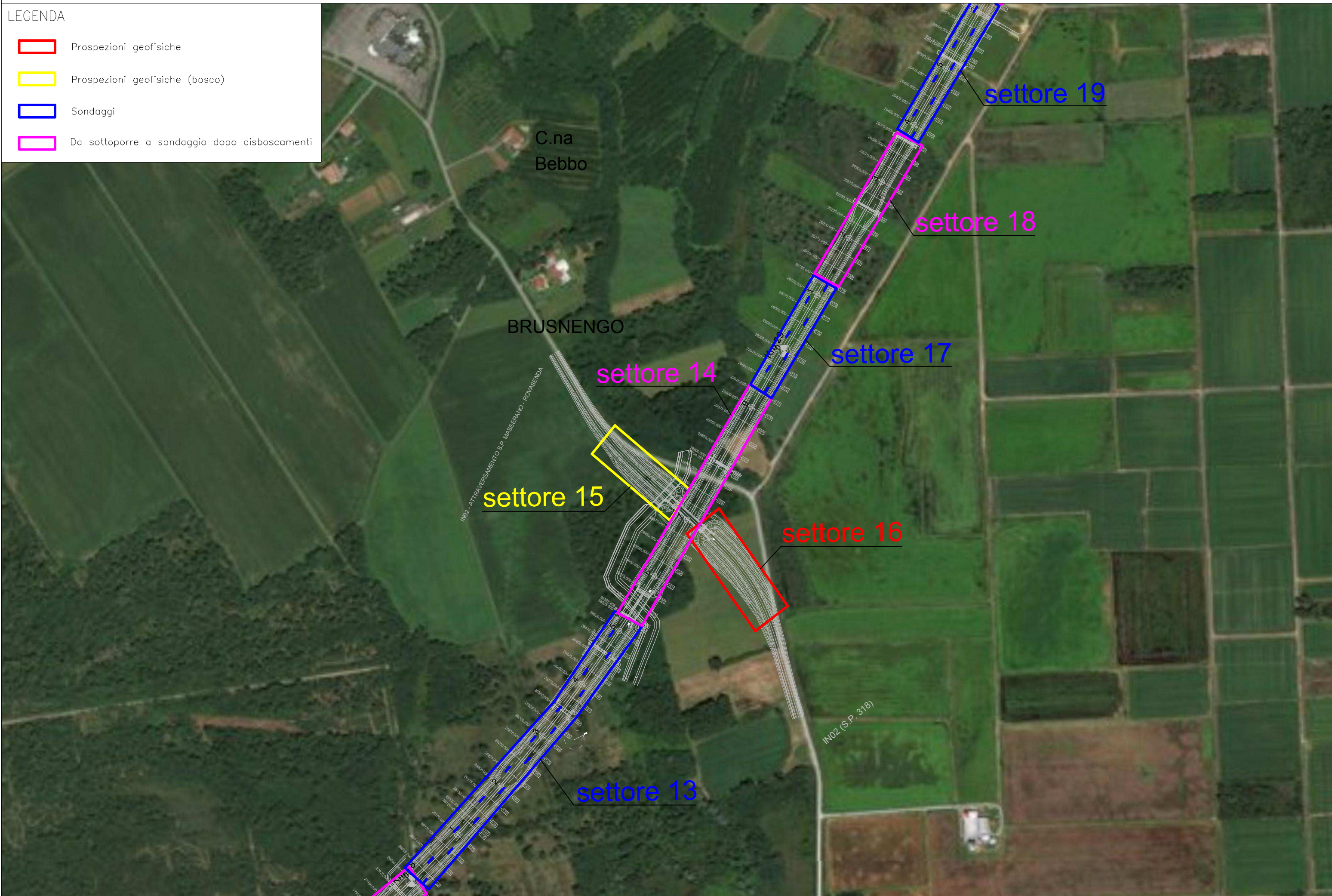
LEGENDA

-  Prospezioni geofisiche
-  Sondaggi
-  Da sottoporre a sondaggio dopo disboscamenti







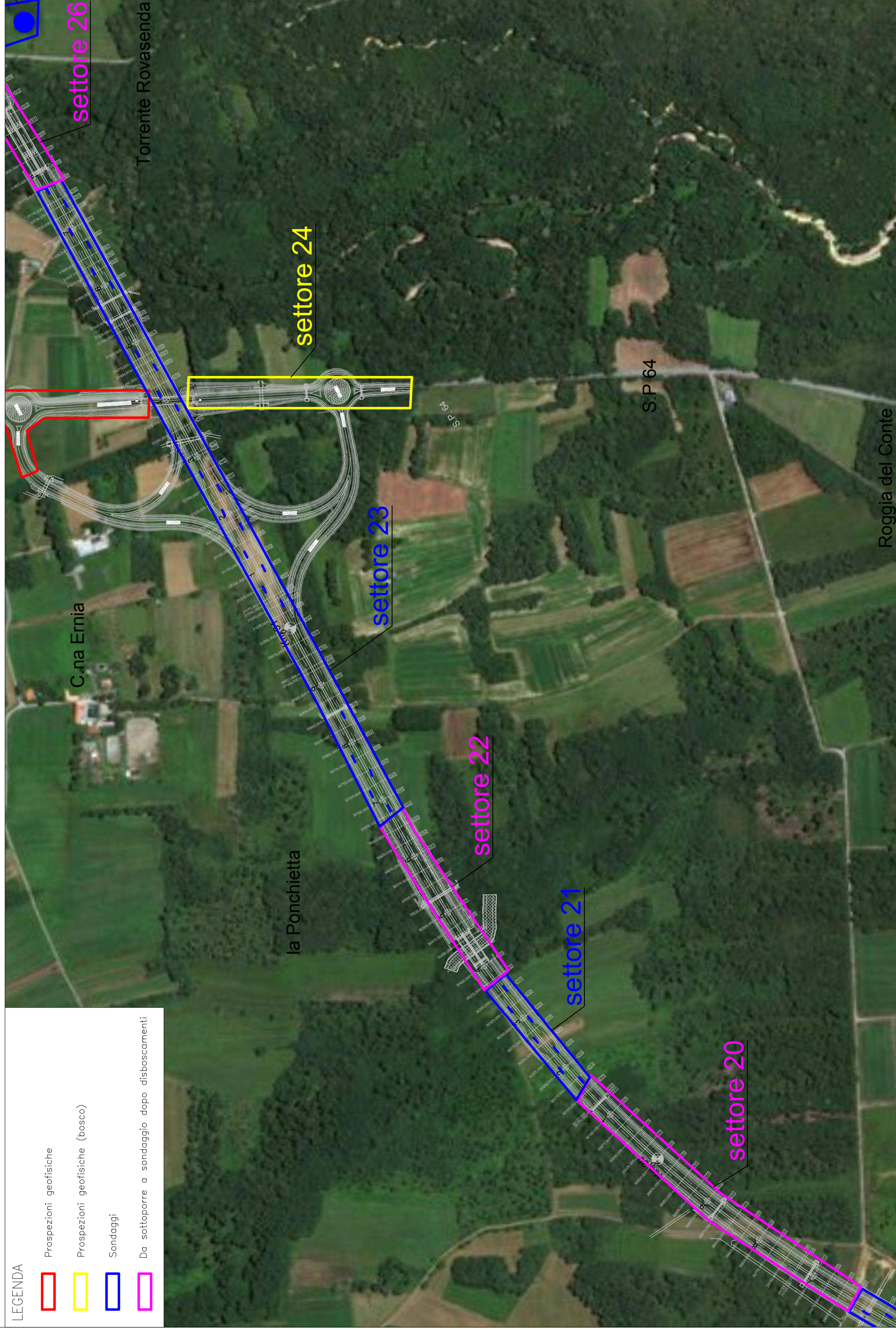
LEGENDA

-  Prospezioni geofisiche
-  Prospezioni geofisiche (bosco)
-  Sondaggi
-  Da sottoporre a sondaggio dopo disboscamenti




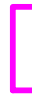


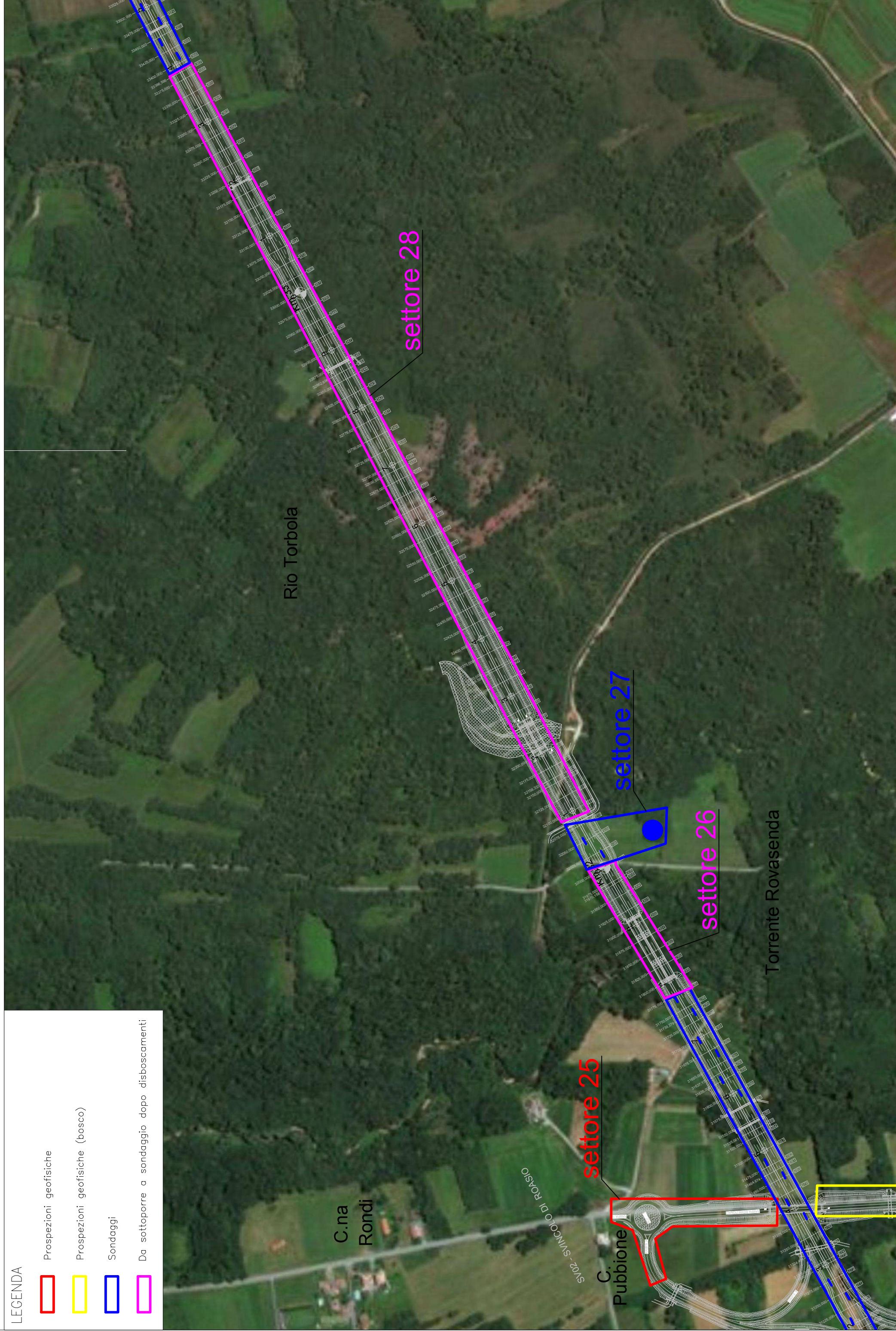
LEGENDA

	Prospezioni geofisiche
	Prospezioni geofisiche (bosco)
	Sondaggi
	Da sottoporre a sondaggio dopo disboscamenti



LEGENDA

	Prospezioni geofisiche
	Prospezioni geofisiche (bosco)
	Sondaggi
	Da sottoporre a sondaggio dopo disboscamenti



LEGENDA



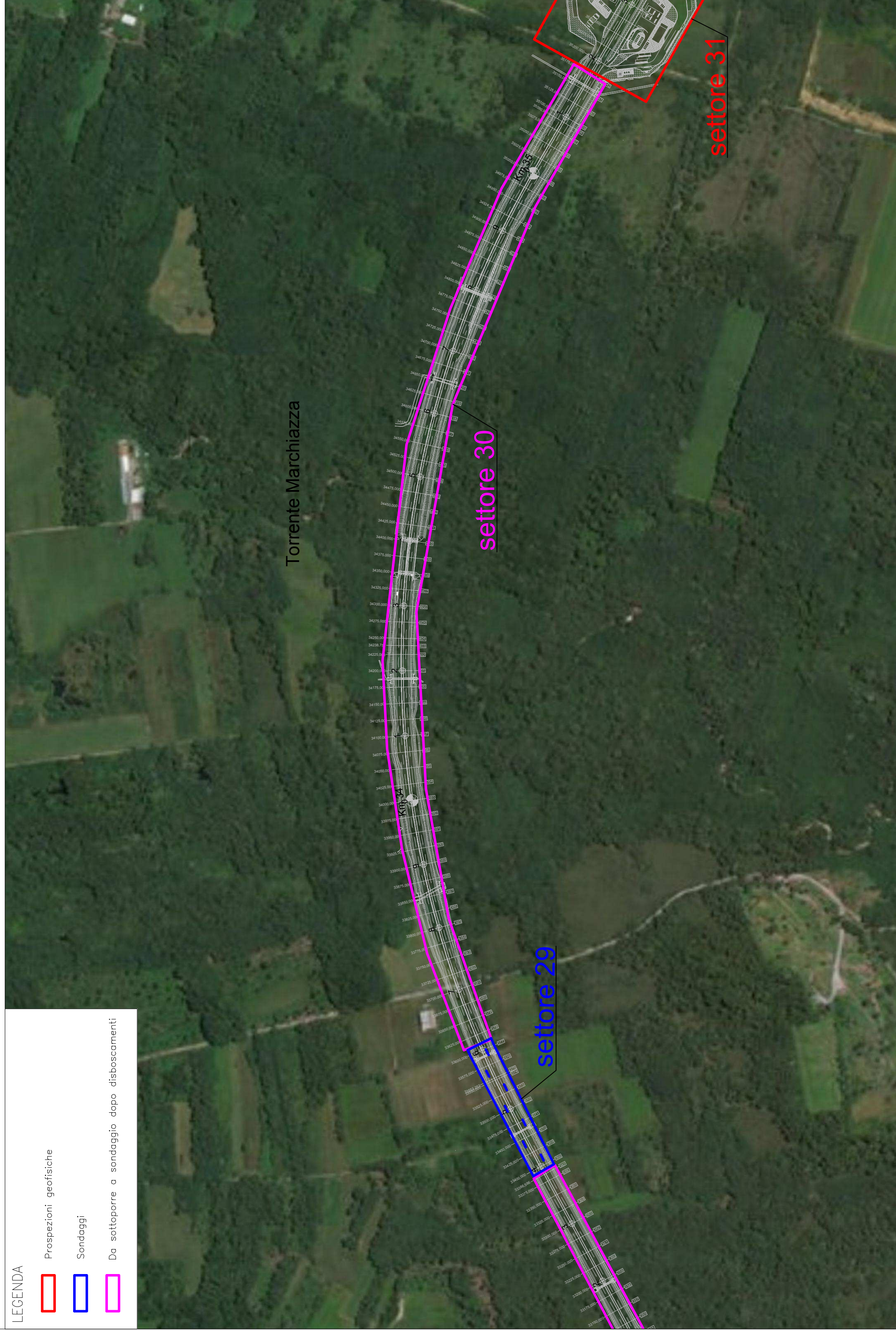
Prospezioni geofisiche



Sondaggi



Da sottoporre a sondaggio dopo disboscamenti






Torrente Marchiazza

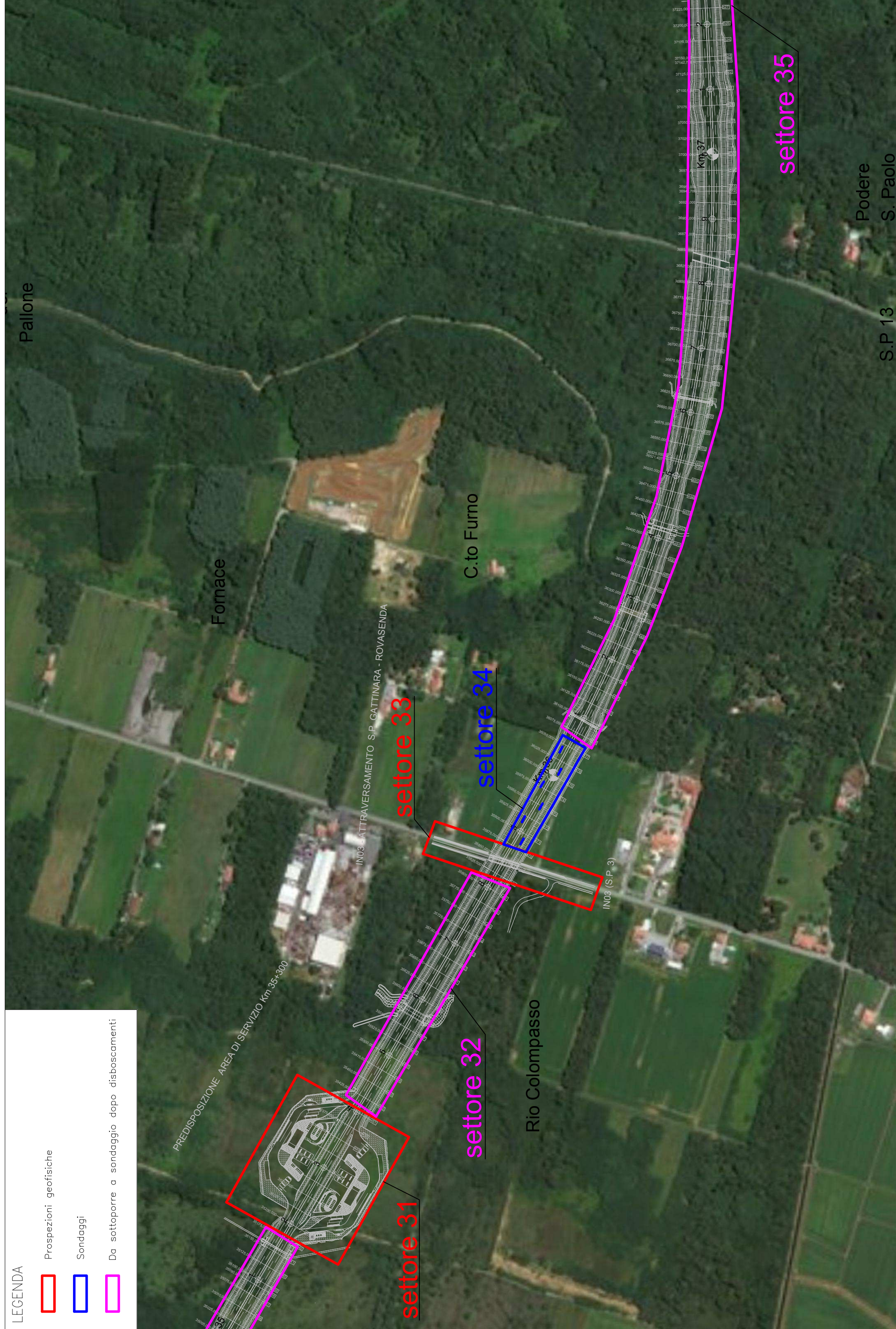
setto 30

setto 29

setto 31

LEGENDA

-  Prosezioni geofisiche
-  Sondaggi
-  Da sottoporre a sondaggio dopo disboscamenti

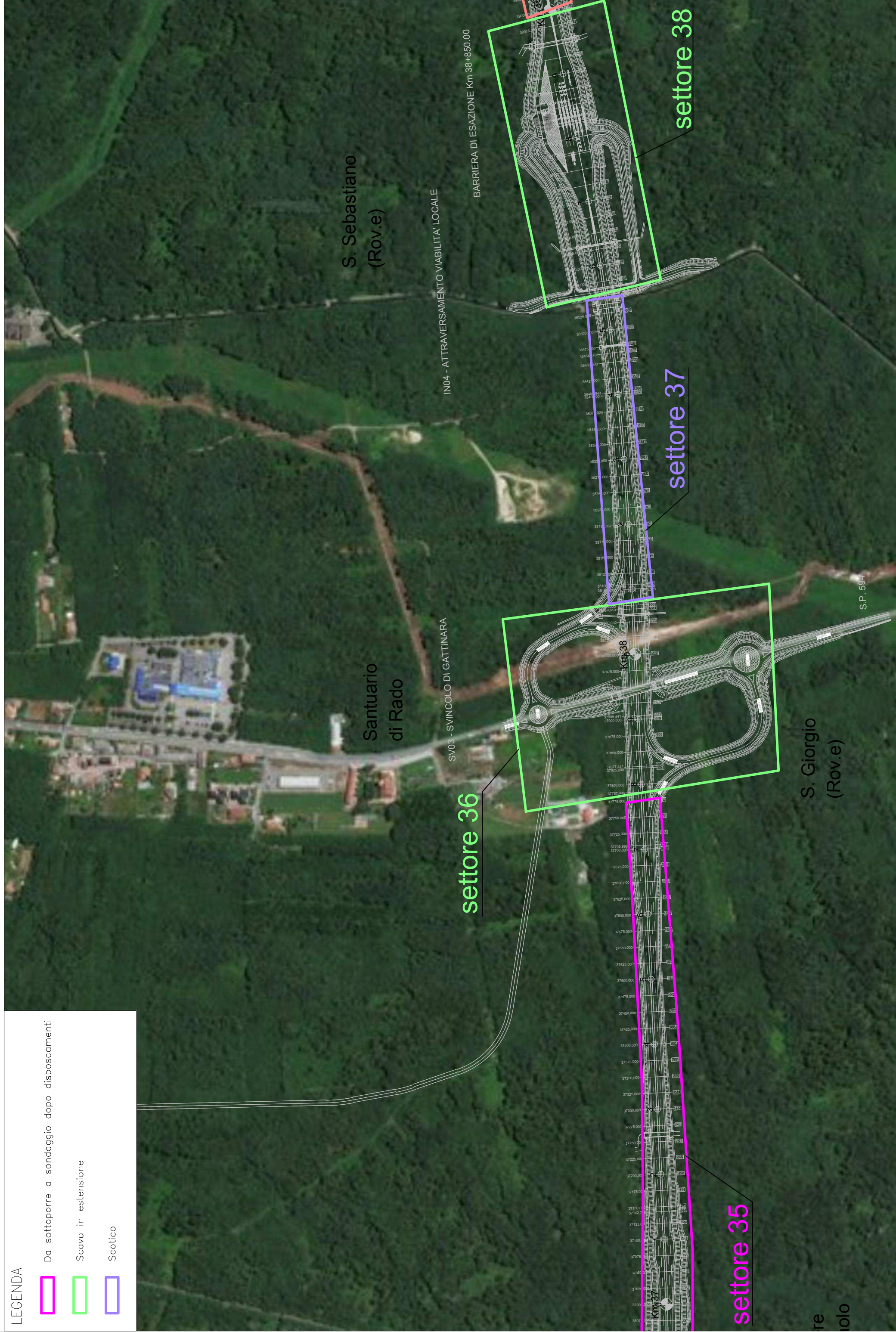


LEGENDA




Da sottoporre a sondaggio dopo disboscamenti

Scavo in estensione

Scotico



LEGENDA

	Prospezioni geofisiche
	Scavo in estensione
	Ricognizione intensiva

