

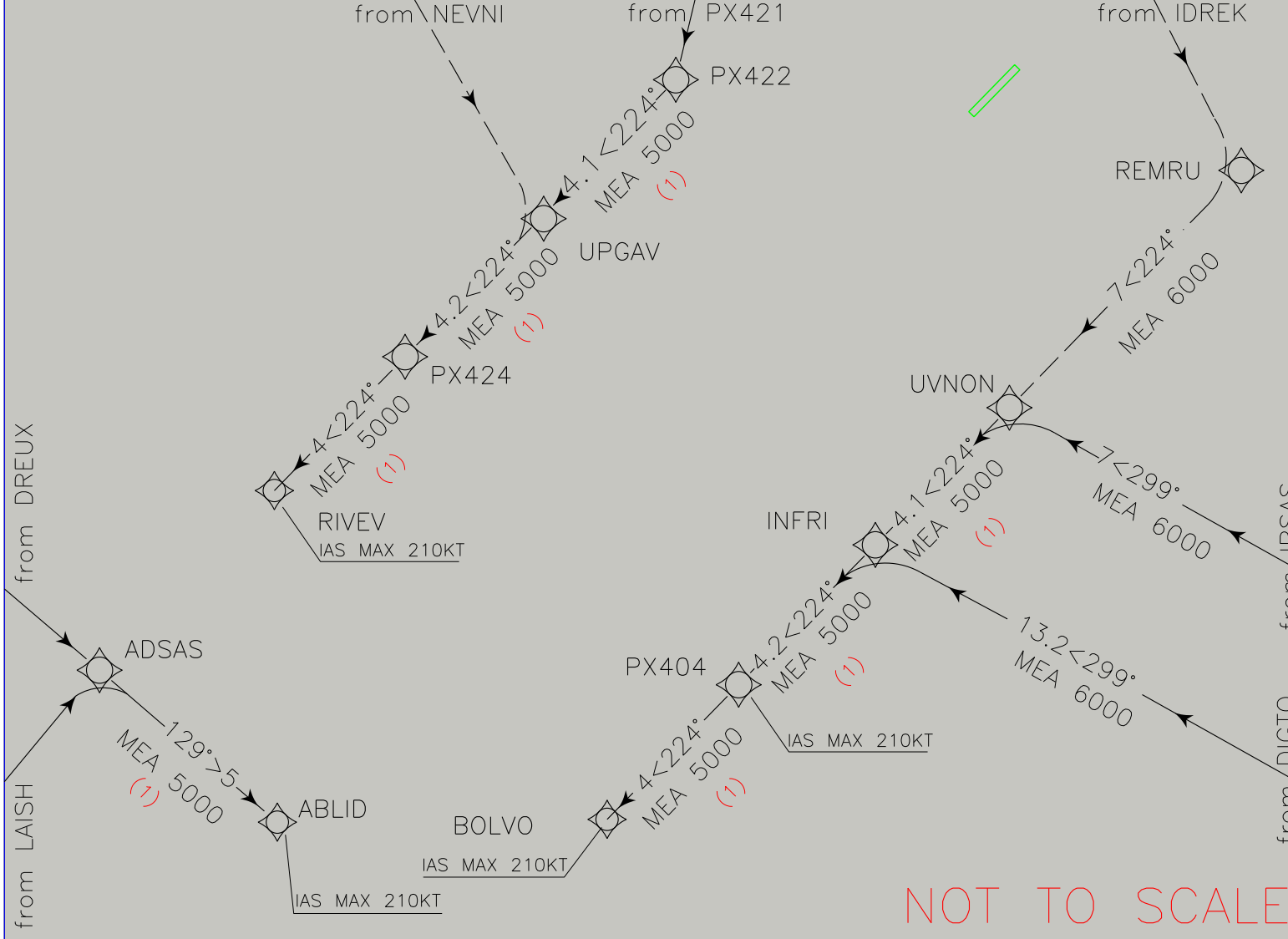
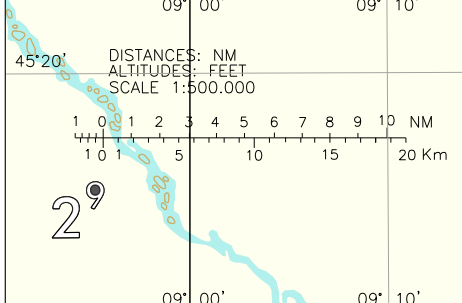
CHANGE: ALL STARS MODIFIED WITH NEW WAYPOINT DESIGNATOR - MSA MODIFIED

FREQUENCIES	
APP Verona APP/Radar	135.900 124.250 118.550
TWR Villafranca TWR	118.650

LEGEND	
STAR	→
STAR ATC DISCRETION	- - - →

REMARKS

- (1) MEA/MHA 3000FT ATC Discretion
- (2) MHA 4000FT ATC Discretion
- (3) Higher Altitude/Levels ATC Discretion
- (4) for RNAV system without RNAV Holding functionality



MNM SECT ALT 25NM ARP 	ABLID Holding Pattern 	BOLVO Holding Pattern 	RIVEV Holding Pattern 	DVOR/DME Bologna BOA 117.10 Ch 118X 44°32'13"N 011°17'26"E 43m
	RNAV MHA 5000FT (2) IAS MAX 210KT	RNAV MHA 5000FT (1) (3) IAS MAX 210KT	RNAV MHA 5000FT (2) IAS MAX 210KT	

VERONA/Villafranca
STAR RNAV 1 RWY 04

BOA 3J

Path Terminator	Waypoint Name	Fly Over	Track °Mag	Turn Direction	Altitude Constraint	Speed Limit (IAS)	Recommended Navaid	Bearing/Range to Navaid	Navigation Performance
IF	BOA	-	-	-	-	-	-	-	RNAV 1
TF	XUBKA	-	344°	-	+FL100	-	-	-	RNAV 1
TF	DIGTO	-	344°	-	-	-	-	-	RNAV 1
TF	INFRI	-	299°	-	+6000FT	-	-	-	RNAV 1
TF	PX404	-	224°	-	-	210	-	-	RNAV 1
TF	BOLVO	-	224°	-	+5000FT (1)	210	-	-	RNAV 1

IDREK 2J

Path Terminator	Waypoint Name	Fly Over	Track °Mag	Turn Direction	Altitude Constraint	Speed Limit (IAS)	Recommended Navaid	Bearing/Range to Navaid	Navigation Performance
IF	IDREK	-	-	-	-	-	-	-	RNAV 1
TF	PX421	-	193°	-	+FL110	-	-	-	RNAV 1
TF	PX422	-	193°	-	+FL90	-	-	-	RNAV 1
TF	UPGAV	-	224°	-	-	-	-	-	RNAV 1
TF	PX424	-	224°	-	-	-	-	-	RNAV 1
TF	RIVEV	-	224°	-	+5000FT (1)	210	-	-	RNAV 1

IDREK 3R (a discrezione ATC/ATC Discretion)

Path Terminator	Waypoint Name	Fly Over	Track °Mag	Turn Direction	Altitude Constraint	Speed Limit (IAS)	Recommended Navaid	Bearing/Range to Navaid	Navigation Performance
IF	IDREK	-	-	-	-	-	-	-	RNAV 1
TF	XENRU	-	152°	-	+FL110	-	-	-	RNAV 1
TF	UVNON	-	224°	-	+6000FT	-	-	-	RNAV 1
TF	INFRI	-	224°	-	-	-	-	-	RNAV 1
TF	PX404	-	224°	-	-	210	-	-	RNAV 1
TF	BOLVO	-	224°	-	+5000FT (1)	210	-	-	RNAV 1

NEVNI 2J

Path Terminator	Waypoint Name	Fly Over	Track °Mag	Turn Direction	Altitude Constraint	Speed Limit (IAS)	Recommended Navaid	Bearing/Range to Navaid	Navigation Performance
IF	NEVNI	-	-	-	-	-	-	-	RNAV 1
TF	DREUX	-	186°	-	+FL110	-	-	-	RNAV 1
TF	ADSAS	-	129°	-	-	-	-	-	RNAV 1
TF	ABLID	-	129°	-	+5000FT (1)	210	-	-	RNAV 1

NEVNI 2R (a discrezione ATC/ATC Discretion)

Path Terminator	Waypoint Name	Fly Over	Track °Mag	Turn Direction	Altitude Constraint	Speed Limit (IAS)	Recommended Navaid	Bearing/Range to Navaid	Navigation Performance
IF	NEVNI	-	-	-	-	-	-	-	RNAV 1
TF	UPGAV	-	149°	-	+FL110	-	-	-	RNAV 1
TF	PX424	-	224°	-	-	-	-	-	RNAV 1
TF	RIVEV	-	224°	-	+5000FT (1)	210	-	-	RNAV 1

OSBUL 2J

Path Terminator	Waypoint Name	Fly Over	Track °Mag	Turn Direction	Altitude Constraint	Speed Limit (IAS)	Recommended Navaid	Bearing/ Range to Navaid	Navigation Performance
IF	OSBUL	-	-	-	-	-	-	-	RNAV 1
TF	LAISH	-	348°	-	+6000FT	-	-	-	RNAV 1
TF	ADSAS	-	039°	-	-	-	-	-	RNAV 1
TF	ABLID	-	129°	R	+5000FT (1)	210	-	-	RNAV 1

OSTEG 3J

Path Terminator	Waypoint Name	Fly Over	Track °Mag	Turn Direction	Altitude Constraint	Speed Limit (IAS)	Recommended Navaid	Bearing/ Range to Navaid	Navigation Performance
IF	OSTEG	-	-	-	-	-	-	-	RNAV 1
TF	AIXBA	-	299°	-	-	-	-	-	RNAV 1
TF	UVNON	-	299°	-	+6000FT	-	-	-	RNAV 1
TF	INFRI	-	224°	-	-	-	-	-	RNAV 1
TF	PX404	-	224°	-	-	210	-	-	RNAV 1
TF	BOLVO	-	224°	-	+5000FT (1)	210	-	-	RNAV 1

TZO 2J

Path Terminator	Waypoint Name	Fly Over	Track °Mag	Turn Direction	Altitude Constraint	Speed Limit (IAS)	Recommended Navaid	Bearing/ Range to Navaid	Navigation Performance
IF	TZO	-	-	-	-	-	-	-	RNAV 1
TF	EKDOG	-	113°	-	+FL110	-	-	-	RNAV 1
TF	DIRVU	-	113°	-	-	-	-	-	RNAV 1
TF	DREUX	-	129°	-	+6000FT	-	-	-	RNAV 1
TF	ADSAS	-	129°	-	-	-	-	-	RNAV 1
TF	ABLID	-	129°	-	+5000FT (1)	210	-	-	RNAV 1

HOLDING RNAV

Path Terminator	Waypoint Name	Inbound Track	Leg distance	Turn Direction	Altitude Constraint	Speed Limit	Magnetic Variation	Navigation Specification	Waypoint Distance (only for RNAV system without RNAV functionality)
HF	ABLID	044°	4.0	R	5000 (2)	210	2.1	RNAV 1	5.5
HF	BOLVO	224°	4.0	L	5000 (1) (3)	210	2.1	RNAV 1	5.5
HF	RIVEV	224°	4.0	R	5000 (2)	210	2.1	RNAV 1	5.5

REMARKS

- (1) MEA/MHA 3000FT a discrezione ATC/ATC Discretion
(2) MHA 4000FT a discrezione ATC/ATC Discretion
(3) Altitudini o Livelli superiori a discrezione ATC / Higher Altitudes or Levels ATC Discretion

Waypoints Table formatted according ARINC 424 standards

Waypoint	Latitude	Longitude
PX404	N45110786	E010451015
PX421	N45305129	E010461179
PX422	N45240518	E010433963
PX424	N45181718	E010351675

Intenzionalmente bianca

Intentionally left blank

VERONA/Villafranca

STAR RWY 04

TRANSITION ALT 6000

FREQUENCIES

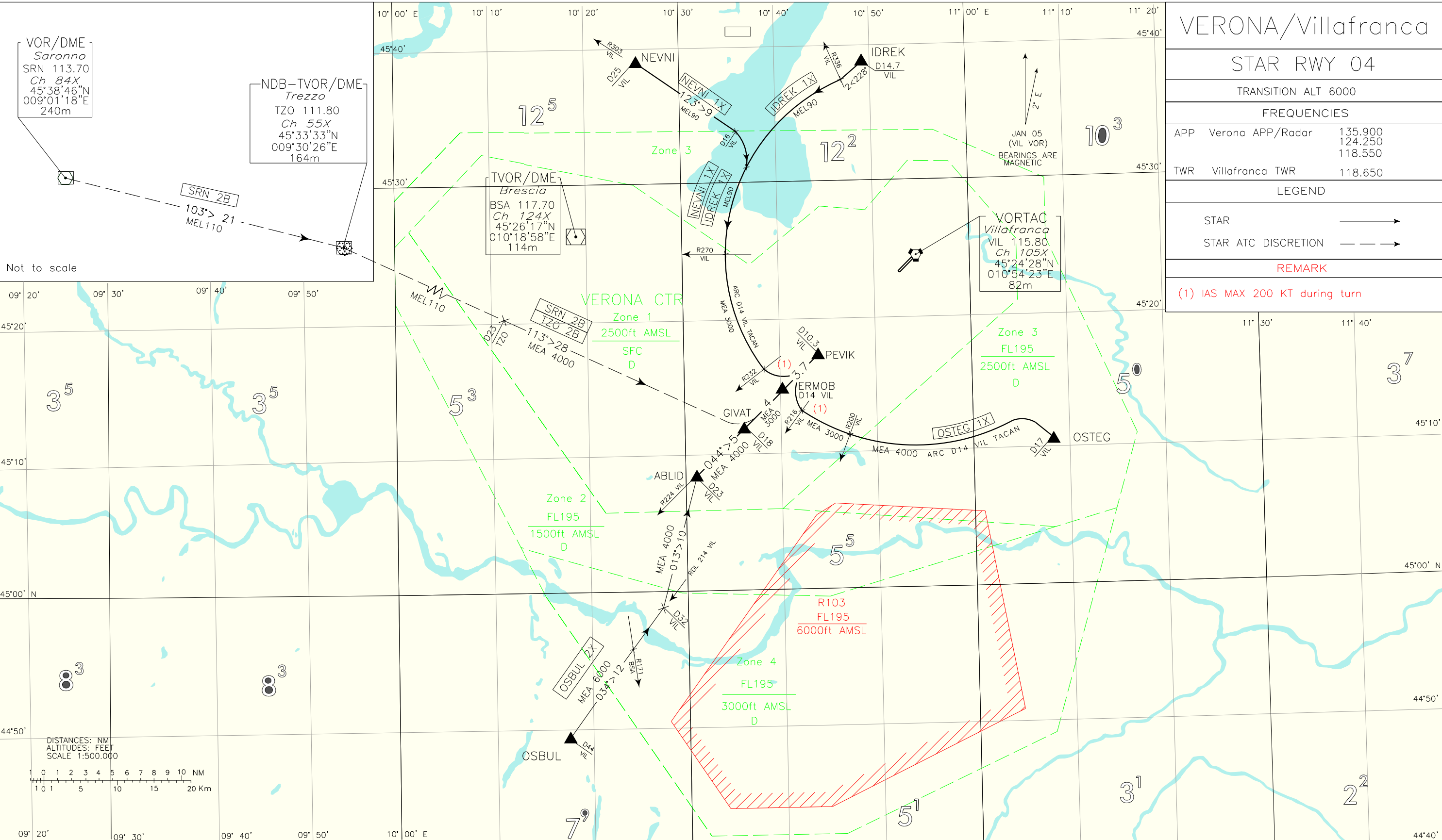
APP	Verona APP/Radar	135.900
	(VIL VOR)	124.250
		118.550
TWR	Villafranca TWR	118.650

LEGEND

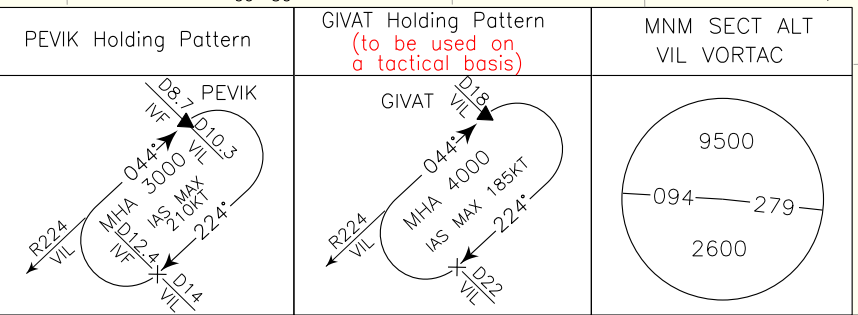
STAR	—————>
STAR ATC DISCRETION	- - - - ->

REMARK

(1) IAS MAX 200 KT during turn



CHANGE: SRN 2B and TZO 2B MODIFIED



STAR RWY 04 VERONA/Villafranca**IDREK 1X**

IDREK procedere su TR 228° fino ad intercettare e seguire ARC 14 NM VIL TACAN. Attraversando RDL 232 VIL VOR virare a sinistra su RDL 224 VIL VOR per il PEVIK (IAS MAX 200kt durante la virata).

IDREK 1X

IDREK proceed on TR 228° to join ARC 14 NM VIL TACAN. Crossing RDL 232 VIL VOR turn left on RDL 224 VIL VOR bound to PEVIK (IAS MAX 200kt during turn).

MEL/MEA: IDREK – ARC 14 NM VIL TACAN/RDL 270 VIL VOR: FL 90; ARC 14 NM VIL TACAN/RDL 270 VIL VOR – PEVIK: 3000FT

NEVNI 1X

NEVNI procedere su TR123°(RDL 303 VIL VOR) fino a 16NM VIL TACAN, quindi virare a destra fino ad intercettare e seguire ARC 14NM VIL TACAN. Attraversando RDL 232 VIL VOR virare a sinistra su RDL 224 VIL VOR per il PEVIK (IAS MAX 200kt durante la virata).

NEVNI 1X

NEVNI proceed on TR123° (RDL 303 VIL VOR) until 16NM VIL TACAN, then turn right to join ARC 14NM VIL TACAN. Crossing RDL 232 VIL VOR turn left on RDL 224 VIL VOR bound to PEVIK (IAS MAX 200kt during turn).

MEL/MEA: NEVNI - ARC 14 NM VIL TACAN/RDL 270 VIL VOR: FL 90; ARC 14 NM VIL TACAN/RDL 270 VIL VOR – PEVIK: 3000FT

OSBUL 2X

OSBUL procedere su TR 034° (RDL 214 VIL VOR) fino a 32NM VIL TACAN, quindi virare a sinistra su TR 013° per ABLID, quindi TR 044° (RDL 224 VIL VOR) per GIVAT, ERMOb e PEVIK.

OSBUL 2X

OSBUL proceed on TR 034° (RDL 214 VIL VOR) until 32NM VIL TACAN, then turn left on TR 013° to ABLID, then TR 044° (RDL 224 VIL VOR) bound to GIVAT, ERMOb and PEVIK.

MEA: OSBUL – INT RDL 214 VIL VOR/RDL 171 BSA VOR: 6000FT; INT RDL 214 VIL VOR/RDL 171 BSA VOR – GIVAT: 4000FT;
GIVAT – PEVIK: 3000FT

OSTEG 1X

OSTEG quindi virare a sinistra fino ad intercettare e seguire ARC 14NM VIL TACAN. Attraversando RDL 216 VIL VOR virare a destra su RDL 224 VIL VOR per il PEVIK (IAS MAX 200kt durante la virata).

OSTEG 1X

OSTEG then turn left to join ARC 14NM VIL TACAN. Crossing RDL 216 VIL VOR turn right on RDL 224 VIL VOR bound to PEVIK (IAS MAX 200kt during turn).

MEA: OSTEG – ARC 14 NM VIL TACAN/RDL 200 VIL VOR: 4000FT; ARC 14 NM VIL TACAN/RDL 200 VIL VOR – PEVIK: 3000FT

SRN 2B (a discrezione ATC)

SRN VOR/DME procedere su RDL 103 SRN VOR per TZO VOR/DME/NDB, quindi procedere su RDL/QDR 113 TZO VOR/NDB fino al GIVAT, quindi RDL 224 VIL VOR per il PEVIK.

SRN 2B (ATC discretion)

SRN VOR/DME proceed on RDL 103 SRN VOR bound to TZO VOR/DME/NDB, then proceed on RDL/QDR 113 TZO VOR/NDB until GIVAT, then RDL 224 VIL VOR bound to PEVIK.

MEL/MEA: SRN VOR/DME – RDL/QDR 113/23NM TZO VOR/DME/NDB: FL 110;
RDL/QDR 113/23NM TZO VOR/DME/NDB – GIVAT: 4000FT; GIVAT – PEVIK: 3000FT

TZO 2B (a discrezione ATC)

TZO VOR/DME/NDB procedere su RDL/QDR 113 TZO VOR/NDB fino al GIVAT, quindi RDL 224 VIL VOR per il PEVIK.

TZO 2B (ATC discretion)

TZO VOR/DME/NDB proceed on RDL/QDR 113 TZO VOR/NDB until GIVAT, then RDL 224 VIL VOR bound to PEVIK.

MEL/MEA: TZO VOR/DME/NDB – RDL/QDR 113/23NM TZO VOR/DME/NDB: FL 110; RDL/QDR 113/23NM TZO VOR/DME/NDB – GIVAT: 4000FT; GIVAT – PEVIK: 3000FT

Intenzionalmente bianca

Intentionally left blank