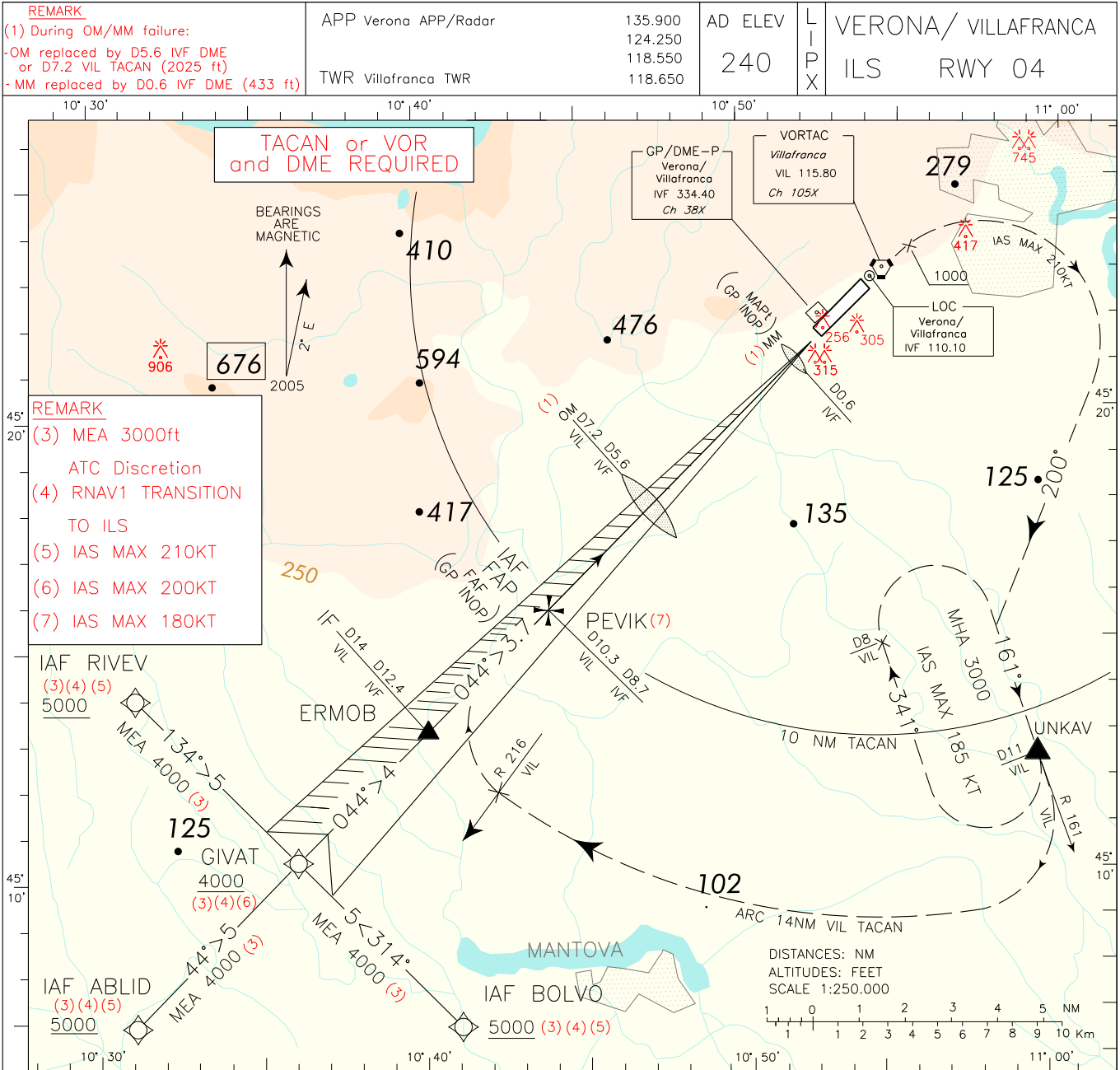


CHANGE: New aeroclub activity and aerial work area 'FENILETTO DI BUTTAPIETRA' and updated chart

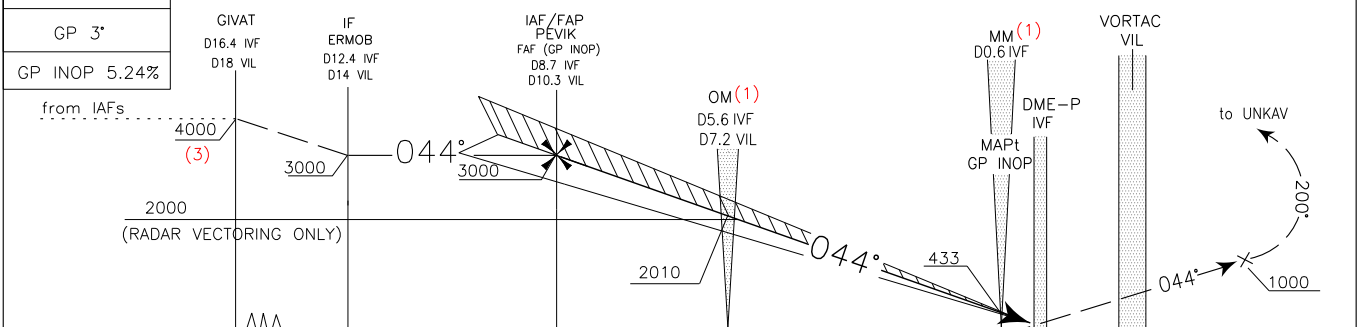
DOC.8168-ED.6-2014 AMDT 7

CHANGE: REMARKS 5 - 6 - 7 ADDED



TRANSITION ALT 6000

MISSED APPROACH: Maintaining final TR 044°, climb to 3000 ft. Passing VIL VORTAC or 1000 ft, whichever is later, turn right TR 200° (IAS MAX 210KT) to join RDL 161 VIL VOR bound to UNKAV missed approach holding pattern.
 Hold on RDL 161 VIL VOR at 3000ft, between 11NM and 8NM VIL TACAN; outbound TR 341°, right turns, IAS MAX 185KT.



STRAIGHT IN APPROACH	OCA (OCH)				(2) REMARK: Circling allowed South-East of the RWY only.	GS	FT PER MIN	DIST VIL TACAN	ALT (HGT)	MNM SECT ALT VIL	VORTAC
	A	B	C	D							
ILS CAT I	420 (200)		422 (202)	433 (213)	80	440	10.3 NM	3000 (2780)			
ILS CAT II Radio Altimeter only	320 (100)	331 (111)	343 (123)	357 (137)	100	550	9 NM	2590 (2370)			
ILS CAT III		257 (37)			120	650	7 NM	1950 (1730)			
GP INOP		570 (350)			140	760	6 NM	1630 (1410)			
CIRCLING (2)	800 (560)		950 (710)	1100 (860)	160	870	5 NM	1310 (1090)			
					180	980	4 NM	990 (770)			
							3 NM	670 (450)			

RNAV TRANSITION TO ILS APPROACH via ABLID

Path Terminator	Waypoint identifier	Flyover	Course/Track °M (°T)	Turn Direction	Altitude Constraint (ft)	Speed Limit (kt)/Bank Angle	Recommended Navaid	Bearing/Range from Navaid	Distance from THR (NM)	Navigation Performance
IF	ABLID	-	-	-	+5000 ⁽¹⁾	210	-	-	21.2	RNAV 1
TF	GIVAT	-	044 (045.1)	-	+4000 ⁽¹⁾	200	-	-	16.2	RNAV 1
TF	ERMOB	-	044 (045.9)	-	+3000	-	-	-	12.2	RNAV 1

RNAV TRANSITION TO ILS APPROACH via BOLVO

Path Terminator	Waypoint identifier	Flyover	Course/Track °M (°T)	Turn Direction	Altitude Constraint (ft)	Speed Limit (kt)/Bank Angle	Recommended Navaid	Bearing/Range from Navaid	Distance from THR (NM)	Navigation Performance
IF	BOLVO	-	-	-	+5000 ⁽¹⁾	210	-	-	-	RNAV 1
TF	GIVAT	-	314 (315.9)	-	+4000 ⁽¹⁾	200	-	-	16.2	RNAV 1
TF	ERMOB	-	044 (045.9)	-	+3000	-	-	-	12.2	RNAV 1

RNAV TRANSITION TO ILS APPROACH via RIVEV

Path Terminator	Waypoint identifier	Flyover	Course/Track °M (°T)	Turn Direction	Altitude Constraint (ft)	Speed Limit (kt)/Bank Angle	Recommended Navaid	Bearing/Range from Navaid	Distance from THR (NM)	Navigation Performance
IF	RIVEV	-	-	-	+5000 ⁽¹⁾	210	-	-	-	RNAV 1
TF	GIVAT	-	134 (135.7)	-	+4000 ⁽¹⁾	200	-	-	16.2	RNAV 1
TF	ERMOB	-	044 (045.9)	-	+3000	-	-	-	12.2	RNAV 1

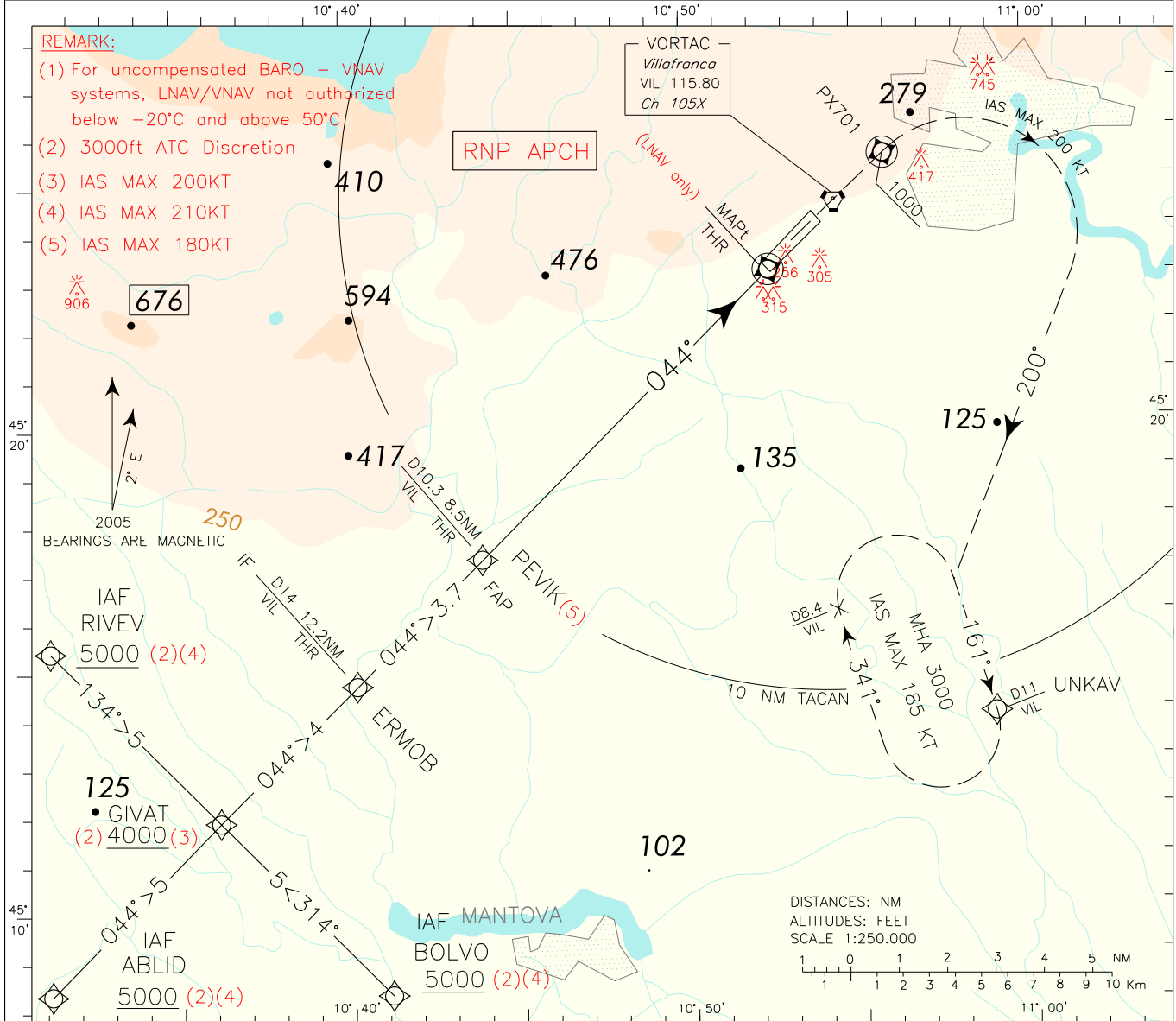
REMARKS:

⁽¹⁾ 3000 FT ATC Discretion

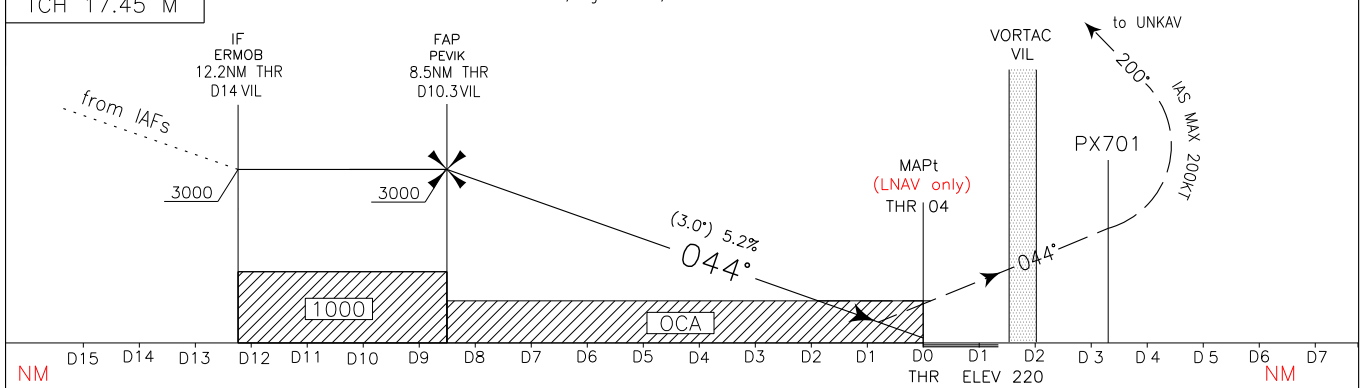
EGNOS CH 90035 E04A	APP Verona APP/Radar TWR Villafranca TWR	135.900 124.250 118.550 118.650	AD ELEV 240	L I P X	VERONA/VILLAFRANCA RNAV (GNSS) RWY 04
---------------------------	---	--	----------------	------------------	--

DOC.8168-ED.6-2014 AMDT 7

CHANGE: REMARKS MODIFIED



TRANSITION ALT 6000 **MISSED APPROACH:** Maintaining final TR 044°, climb to 3000 ft. At PX701 (D1.5 after VIL TACAN, at 1000 ft or above) turn right on TR 200° to join and follow TR 161° bound to UNKAV missed approach holding pattern. Hold at 3000 ft, inbound TR 161°, right turns, IAS MAX 185 kt.



NM					THR													NM						
VIL TAC					THR													VIL TAC						
OCA (OCH)					A	B	C	D	(6) REMARK: Circling allowed South-East of the RWY only.													MNM SECT ALT 25NM ARP		
STRAIGHT IN APPROACH	LPV	520 (300)	530 (310)	540 (320)	550 (330)	GS	FT PER MIN	DIST THR 04														ALT (HGT)		
	LNAV/VNAV	570 (350)	580 (360)	590 (370)	600 (380)	80	425	7 NM														2500 (2280)		
	LNAV	650 (430)				100	530	6 NM														2185 (1965)		
CIRCLING (6)	800 (560)		950 (710)		1100 (860)		120	640	5 NM	1870 (1650)														
						140	740	4 NM	1550 (1330)															
						160	850	3 NM	1230 (1010)															
						180	960	2 NM	915 (695)															

RNAV (GNSS) RWY04 – Instrument Approach Procedure via ABLID

Path Terminator	Waypoint identifier	Flyover	Course/Track °M (°T)	Turn Direction	Altitude Constraint (ft)	Speed Limit (kt)/Bank Angle	Recommended Navaid	Bearing/Range from Navaid	Distance from THR (NM)	Remarks
IF	ABLID	-	-	-	+5000 ⁽⁴⁾	210	-	-	21.2	-
TF	GIVAT	-	044 (045.1)	-	+4000 ⁽⁴⁾	200	-	-	16.2	-
TF	ERMOB	-	044 (045.9)	-	+3000	-	-	-	12.2	-
TF	PEVIK	-	044 (045.6)	-	@3000	180	-	-	8.5	-
TF	THR 04	Y	044 (045.6)	-	-	-	-	-	-	MAPt ⁽¹⁾
TF	PX701	Y	044 (045.7)	-	+1000	200	-	-	-	-
VI	-	-	200 (202.0)	-	-	-	-	-	-	-
CF	UNKAV	Y	161 (163.1)	-	+3000	-	-	-	-	-

RNAV (GNSS) RWY04 – Instrument Approach Procedure via BOLVO

Path Terminator	Waypoint identifier	Flyover	Course/Track °M (°T)	Turn Direction	Altitude Constraint (ft)	Speed Limit (kt)/Bank Angle	Recommended Navaid	Bearing/Range from Navaid	Distance from THR (NM)	Remarks
IF	BOLVO	-	-	-	+5000 ⁽⁴⁾	210	-	-	-	-
TF	GIVAT	-	314 (315.9)	-	+4000 ⁽⁴⁾	200	-	-	16.2	-
TF	ERMOB	-	044 (045.9)	-	+3000	-	-	-	12.2	-
TF	PEVIK	-	044 (045.6)	-	@3000	180	-	-	8.5	-
TF	THR 04	Y	044 (045.6)	-	-	-	-	-	-	MAPt ⁽¹⁾
TF	PX701	Y	044 (045.7)	-	+1000	200	-	-	-	-
VI	-	-	200 (202.0)	-	-	-	-	-	-	-
CF	UNKAV	Y	161 (163.1)	-	+3000	-	-	-	-	-

RNAV (GNSS) RWY04 – Instrument Approach Procedure via RIVEV

Path Terminator	Waypoint identifier	Flyover	Course/Track °M (°T)	Turn Direction	Altitude Constraint (ft)	Speed Limit (kt)/Bank Angle	Recommended Navaid	Bearing/Range from Navaid	Distance from THR (NM)	Remarks
IF	RIVEV	-	-	-	+5000 ⁽⁴⁾	210	-	-	-	-
TF	GIVAT	-	134 (135.7)	-	+4000 ⁽⁴⁾	200	-	-	16.2	-
TF	ERMOB	-	044 (045.9)	-	+3000	-	-	-	12.2	-
TF	PEVIK	-	044 (045.6)	L	@3000	180	-	-	8.5	-
TF	THR 04	Y	044 (045.6)	-	-	-	-	-	-	MAPt ⁽¹⁾
TF	PX701	Y	044 (045.7)	-	+1000	200	-	-	-	-
VI	-	-	200 (202.0)	-	-	-	-	-	-	-
CF	UNKAV	Y	161 (163.1)	-	+3000	-	-	-	-	-

Missed Approach Holding RNAV UNKAV

Path Terminator	Waypoint identifier	Inbound Course °M(°T)	Leg Distance (NM) ⁽²⁾	Timing(min.)/Waypoint Distance (NM) ⁽³⁾	Turn Direction	Minimum Altitude (FT)	Maximum Altitude (FL)	Speed Limit (kt)	Magnetic Variation (°)	Navigation Performance
HM	UNKAV	161 (163)	3.0	- / 3.9	R	3000	-	185	2.0	RNAV 1

REMARKS:

- ⁽¹⁾ For LNAV only
- ⁽²⁾ RNAV system with holding functionality
- ⁽³⁾ RNAV system without holding functionality
- ⁽⁴⁾ 3000 FT ATC Discretion

Waypoints Table formatted according ARINC 424 standards

Waypoint	Latitude	Longitude
PX701	N45253229	E010555556

SBAS FAS DATA BLOCK LIPX RNAV (GNSS) RWY04

INPUT DATA	
PARAMETERS	VALUES
Operation Type	0
SBAS Provider	1
Airport Identifier	LIPX
Runway	04
Runway Direction	0
Approach Performance Designator	0
Route Indicator	
Reference Path Data Selector	0
Reference Path Identifier	E04A
LTP/FTP Latitude	452315.6575N
LTP/FTP Longitude	0105236.7195E
LTP/FTP Ellipsoidal Height (metres)	111.2
FPAP Latitude	452423.7445N
Delta FPAP Latitude (seconds)	68.0870
FPAP Longitude	0105415.7570E
Delta FPAP Longitude (seconds)	99.0375
Threshold Crossing Height	17.45
TCH Units Selector	1
Glidepath Angle (degrees)	3.00
Course Width (metres)	105.00
Length Offset (metres)	0
HAL	40.0
VAL	50.0

OUTPUT DATA	
Data Block	10 18 10 09 0C 04 00 00 01 34 30 05 93 70 7A 13 DF F7 AA 04 58 18 EE 13 02 BB 05 03 5D 81 2C 01 64 00 C8 FA 6F BB 55 7F
Calculated CRC Value	6FBB557F

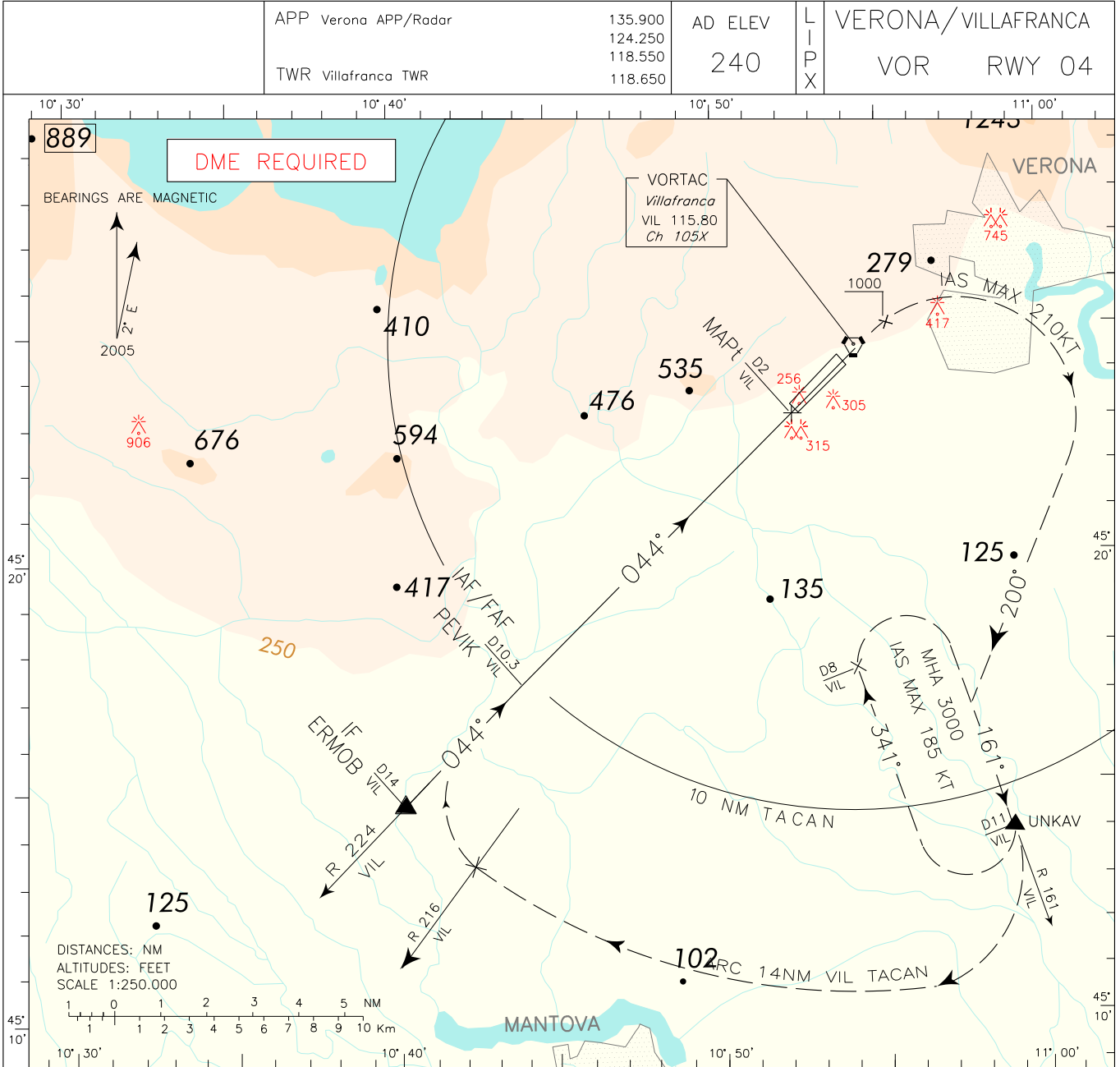
REQUIRED ADDITIONAL DATA (NOT CRC WRAPPED)	
ICAO Code	LI
LTP/FTP Orthometric Height (metres)	66.9
FPAP Orthometric Height (metres)	73.2

Intenzionalmente bianca

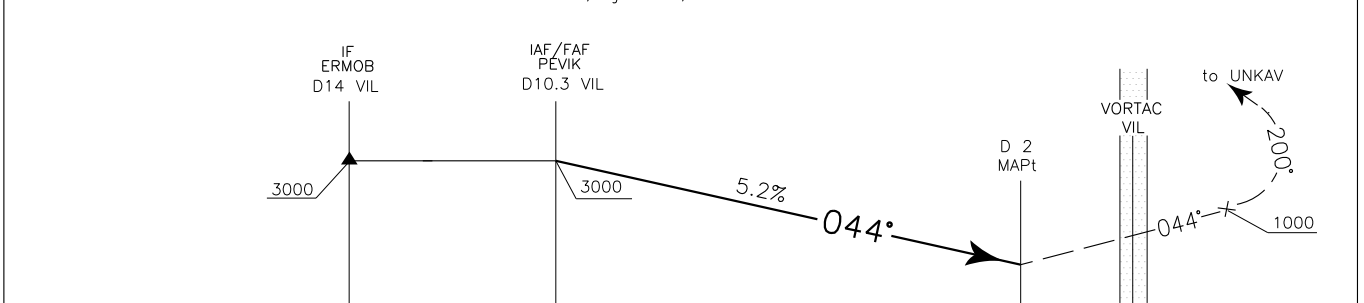
Intentionally left blank

DOC:8168-ED.6-2014

CHANGE: PROCEDURE MODIFIED



TRANSITION ALT 6000 MISSED APPROACH: Maintaining final TR 044° climb to 3000 ft. Passing VIL VORTAC or 1000ft, whichever is later, turn right TR 200° (IAS MAX 210KT) to join RDL 161 VIL VOR bound to UNKAV missed approach holding pattern. Hold on RDL 161 VIL VOR at 3000 ft between 11 NM and 8 NM VIL TACAN; Outbound TR 341°; right turns; IAS MAX 185KT.



VIL TAC	D19	D18	D17	D16	D15	D14	D13	D12	D11	D10	D9	D8	D7	D6	D5	D4	D3	D2	D1	D0	D1	D2	D3	VIL TAC
18 NM	17	16	15	14	13	12	11	10	9	8	7	6	5	4	3	2	1	0	1	2	3	4	5	NM

OCA (OCH)		A	B	C	D	(1) REMARK: Circling allowed South East of the RWY only.	GS	FT PER MIN	DIST VIL TACAN	ALT (HGT)	MNM SECT ALT VIL VORTAC
STRAIGHT IN APPROACH	VOR	820 (600)					80	440	10.3 NM	3000 (2780)	
							100	550	9 NM	2590 (2370)	
							120	660	8 NM	2270 (2050)	
							140	770	7 NM	1950 (1730)	
CIRCLING (1)		830 (590)		950 (710)	1100 (860)	160	880	6 NM	1630 (1410)		
						180	990	5 NM	1310 (1090)		
								4 NM	990 (770)		
								3 NM	670 (450)		