

Valori acustici principali [dB(A)]

Lmin(A): 22.9 Lmax(A): 77.8

Leq(A) : 51.1

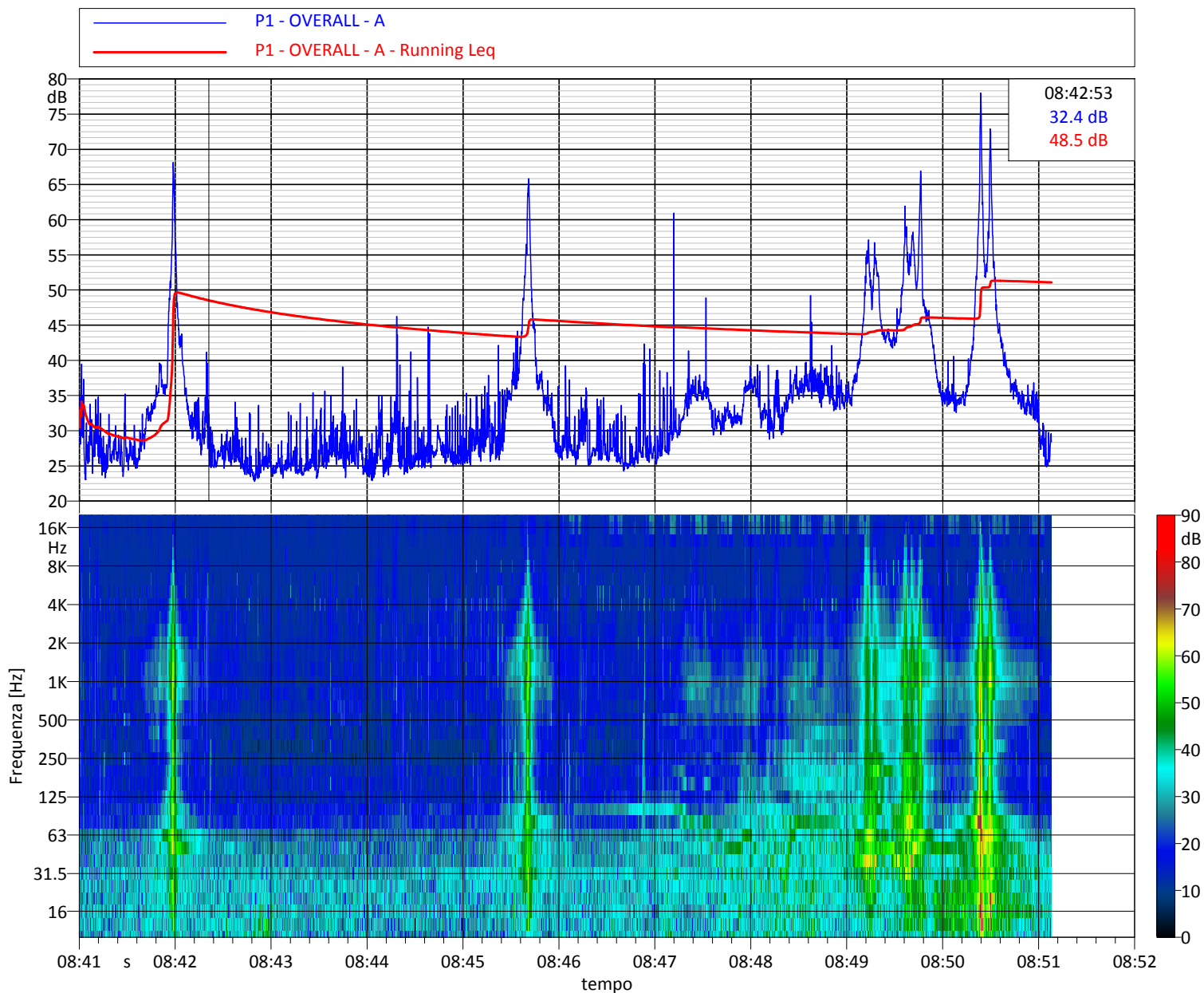
L1: 62.6 L5: 52.5 L10: 44.9

L50: 31.0 L90: 25.3 L95: 24.6 L99: 23.7

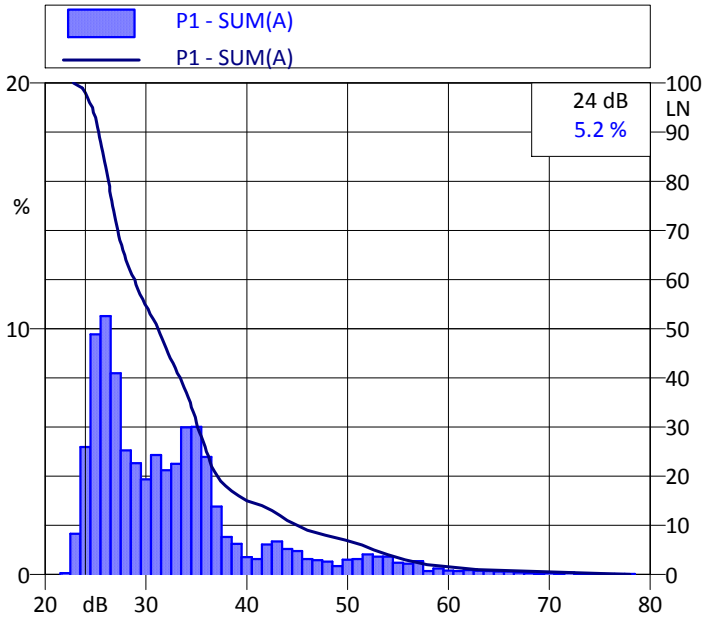
Note:

passaggi di auto e mezzi agricoli

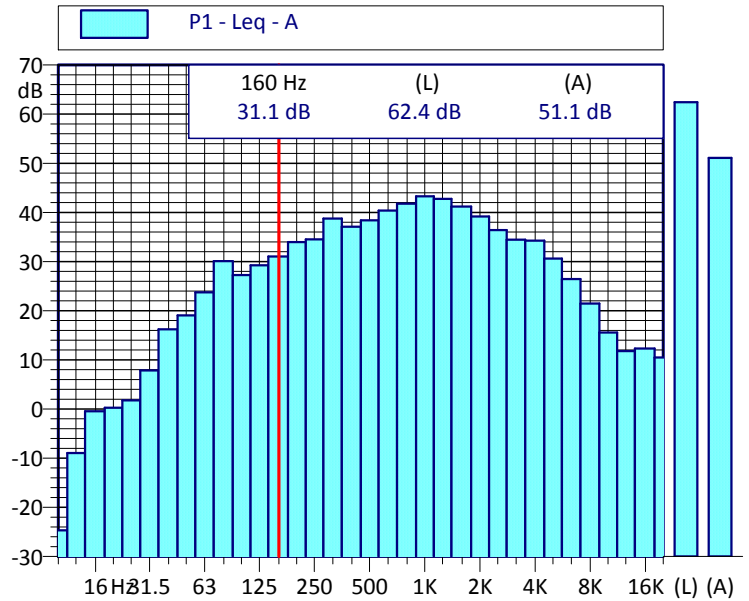
Andamento temporale dei livelli pesati A e dello spettro



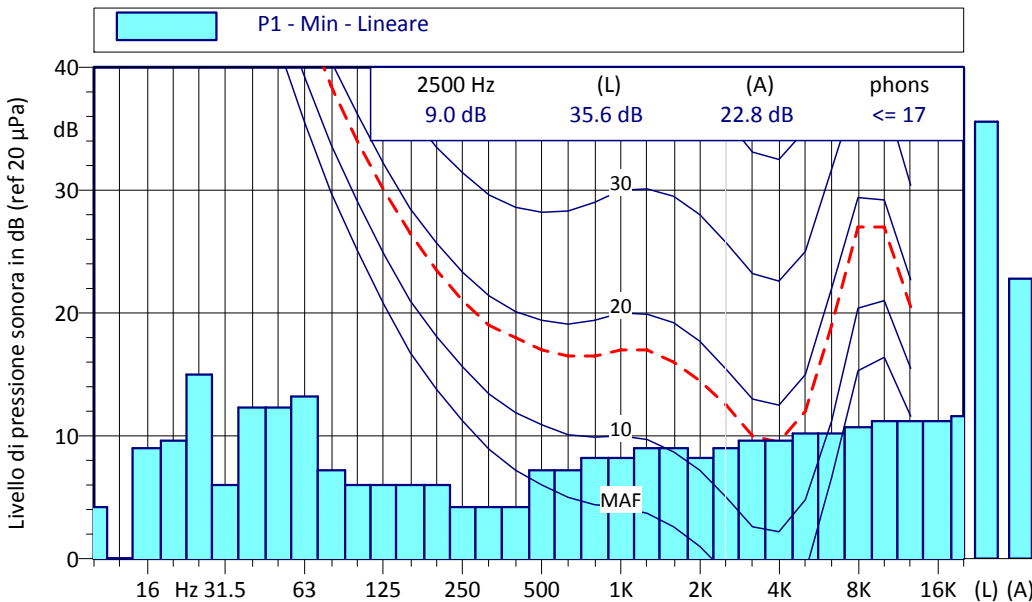
Curva cumulativa e distributiva dei livelli sonori



Spettro in frequenza della misura



Spettro dei minimi (ricerca componenti tonali)



P1 Min - Lineare			
Hz	dB	Hz	dB
10 Hz	4.2 dB	12.5 Hz	0.0 dB
16 Hz	9.0 dB	20 Hz	9.6 dB
25 Hz	15.0 dB	31.5 Hz	6.0 dB
40 Hz	12.3 dB	50 Hz	12.3 dB
63 Hz	13.2 dB	80 Hz	7.2 dB
100 Hz	6.0 dB	125 Hz	6.0 dB
160 Hz	6.0 dB	200 Hz	6.0 dB
250 Hz	4.2 dB	315 Hz	4.2 dB
400 Hz	4.2 dB	500 Hz	7.2 dB
630 Hz	7.2 dB	800 Hz	8.2 dB
1000 Hz	8.2 dB	1250 Hz	9.0 dB
1600 Hz	9.0 dB	2000 Hz	8.2 dB
2500 Hz	9.0 dB	3150 Hz	9.6 dB
4000 Hz	9.6 dB	5000 Hz	10.2 dB
6300 Hz	10.2 dB	8000 Hz	10.7 dB
10000 Hz	11.2 dB	12500 Hz	11.2 dB
16000 Hz	11.2 dB	20000 Hz	11.6 dB

Valori acustici principali [dB(A)]

Lmin(A): 30.2 Lmax(A): 72.1

Leq(A) : 48.9

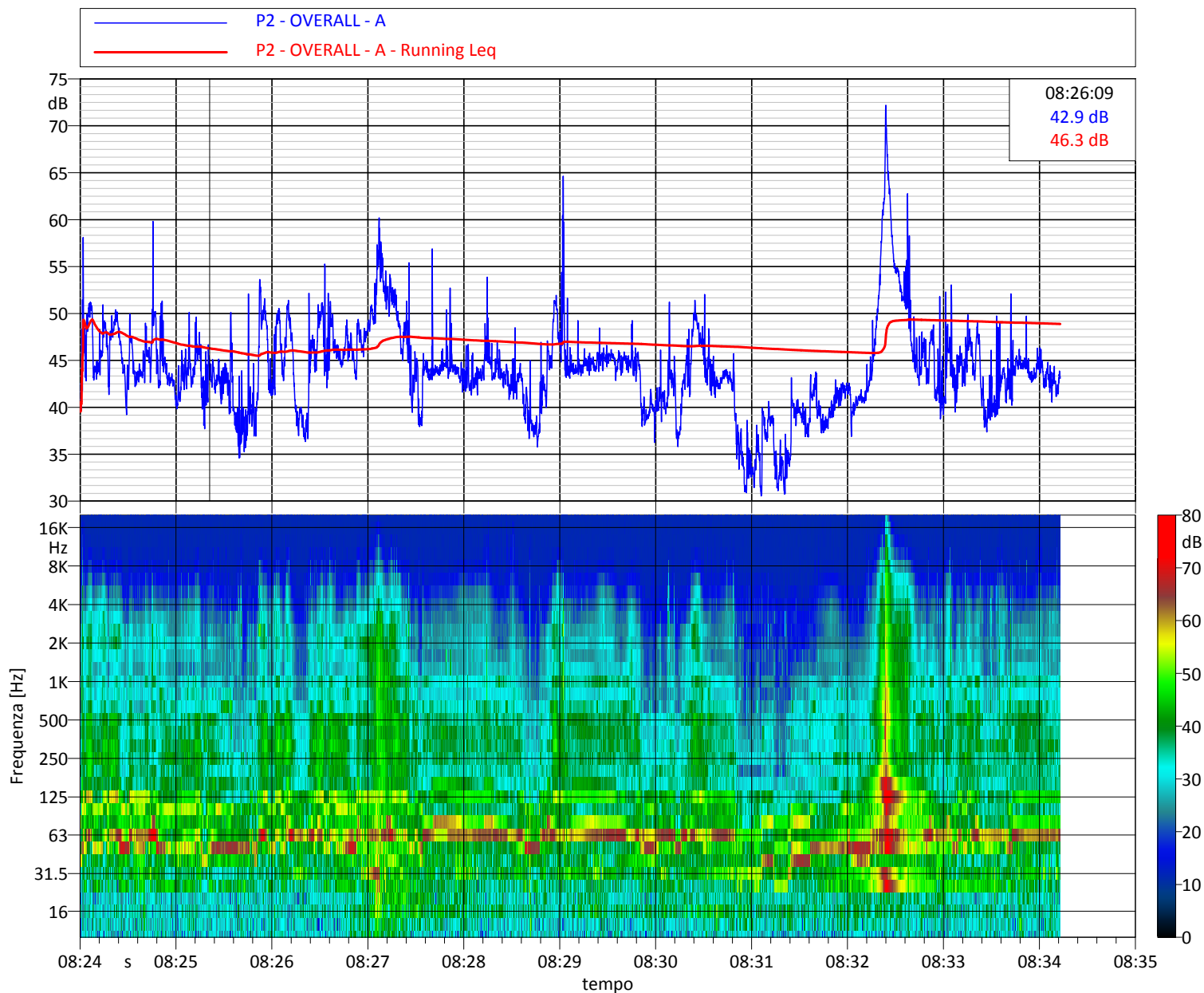
L1: 59.8 L5: 51.6 L10: 49.4

L50: 43.7 L90: 38.2 L95: 36.5 L99: 32.3

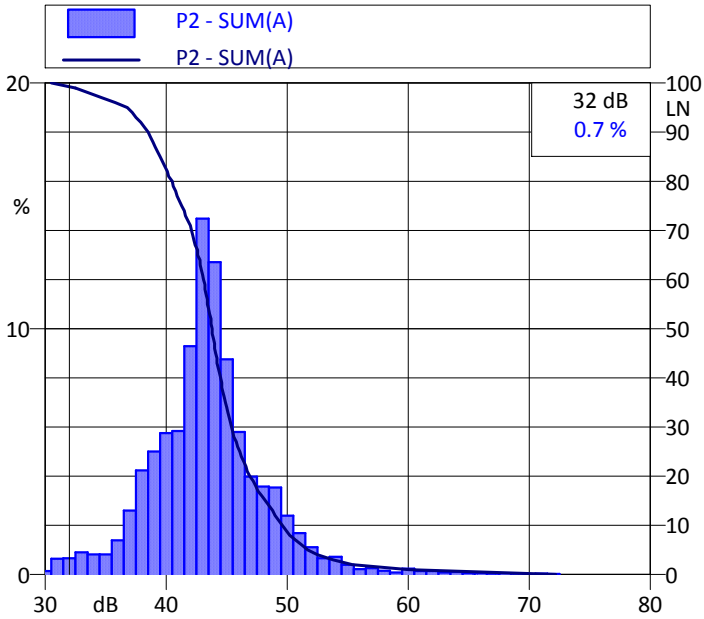
Note:

attività agricole, movimentazione balle di fieno, quad

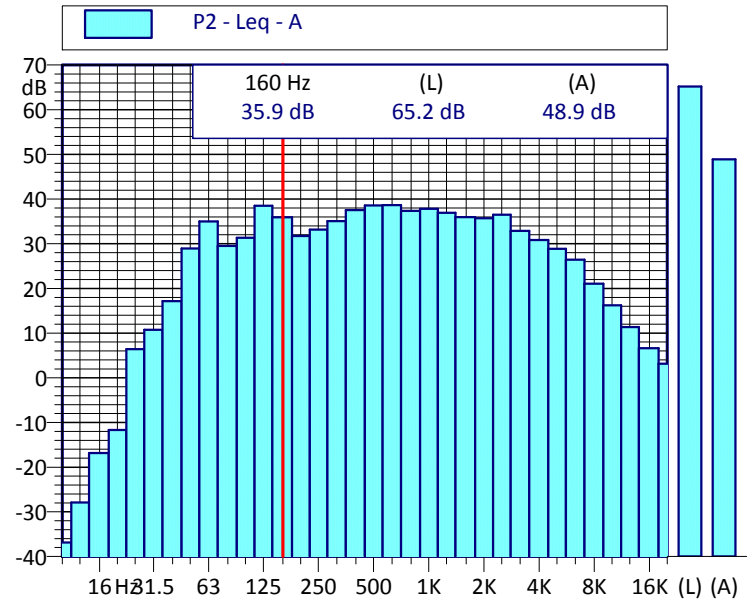
Andamento temporale dei livelli pesati A e dello spettro



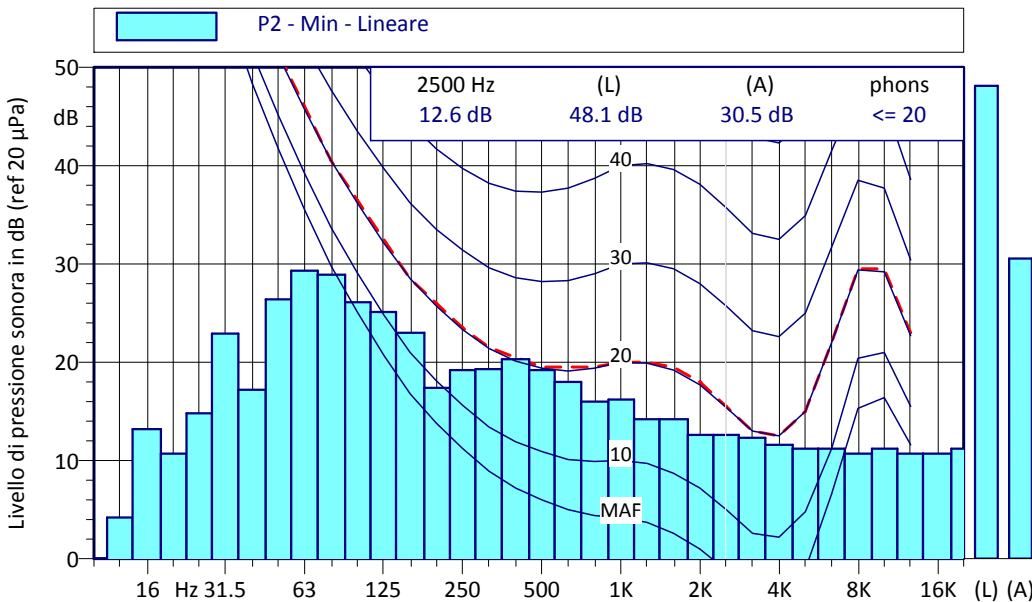
Curva cumulativa e distributiva dei livelli sonori



Spettro in frequenza della misura



Spettro dei minimi (ricerca componenti tonali)



P2 Min - Lineare			
Hz	dB	Hz	dB
10 Hz	0.0 dB	12.5 Hz	4.2 dB
16 Hz	13.2 dB	20 Hz	10.7 dB
25 Hz	14.8 dB	31.5 Hz	22.9 dB
40 Hz	17.2 dB	50 Hz	26.4 dB
63 Hz	29.3 dB	80 Hz	28.9 dB
100 Hz	26.1 dB	125 Hz	25.1 dB
160 Hz	23.0 dB	200 Hz	17.4 dB
250 Hz	19.2 dB	315 Hz	19.3 dB
400 Hz	20.3 dB	500 Hz	19.2 dB
630 Hz	18.0 dB	800 Hz	16.0 dB
1000 Hz	16.2 dB	1250 Hz	14.2 dB
1600 Hz	14.2 dB	2000 Hz	12.6 dB
2500 Hz	12.6 dB	3150 Hz	12.3 dB
4000 Hz	11.6 dB	5000 Hz	11.2 dB
6300 Hz	11.2 dB	8000 Hz	10.7 dB
10000 Hz	11.2 dB	12500 Hz	10.7 dB
16000 Hz	10.7 dB	20000 Hz	11.2 dB

Valori acustici principali [dB(A)]

Lmin(A): 24.4 Lmax(A): 65.9

Leq(A) : 42.9

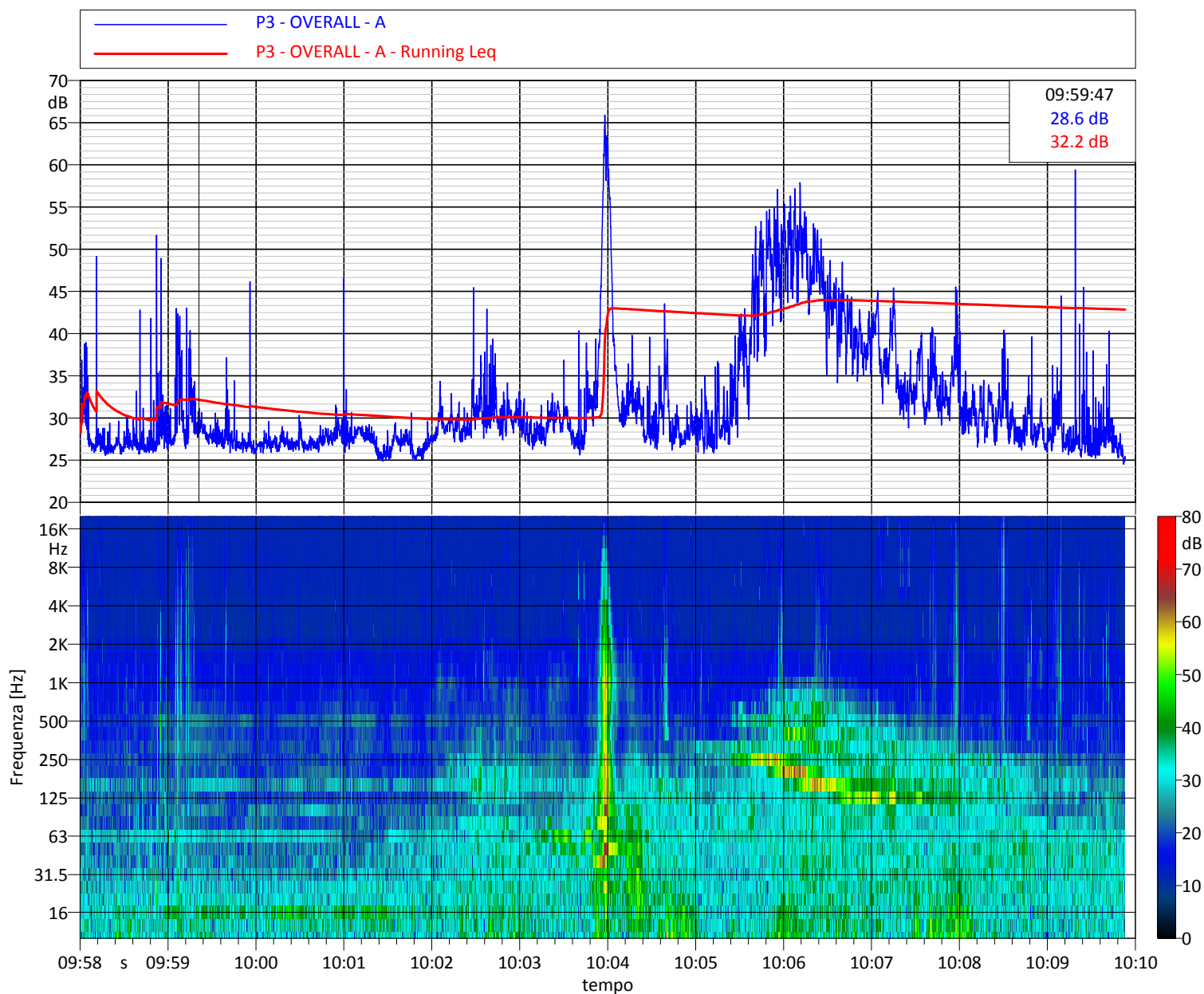
L1: 54.7 L5: 48.2 L10: 42.3

L50: 28.8 L90: 26.5 L95: 26.1 L99: 25.5

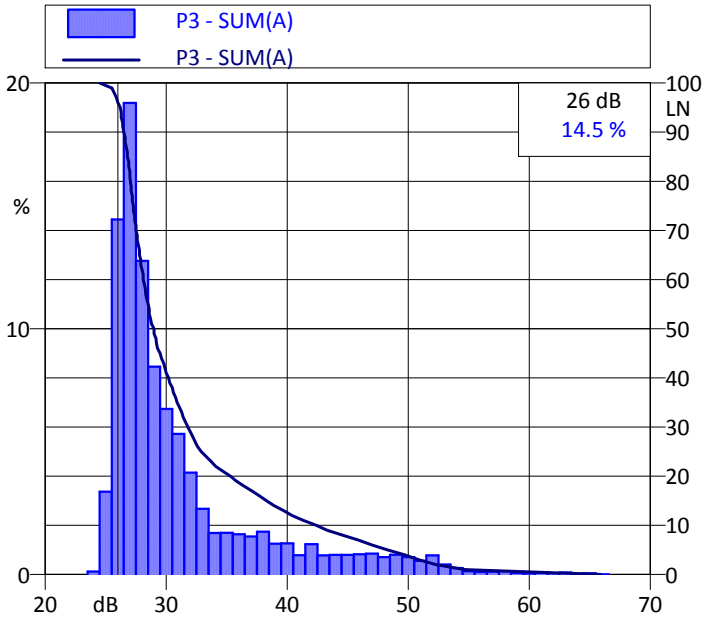
Note:

auto, mezzi agricoli

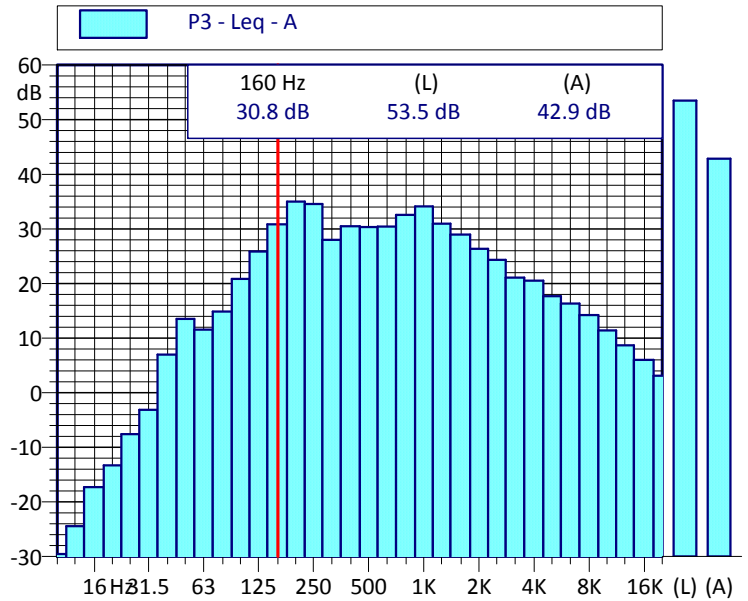
Andamento temporale dei livelli pesati A e dello spettro



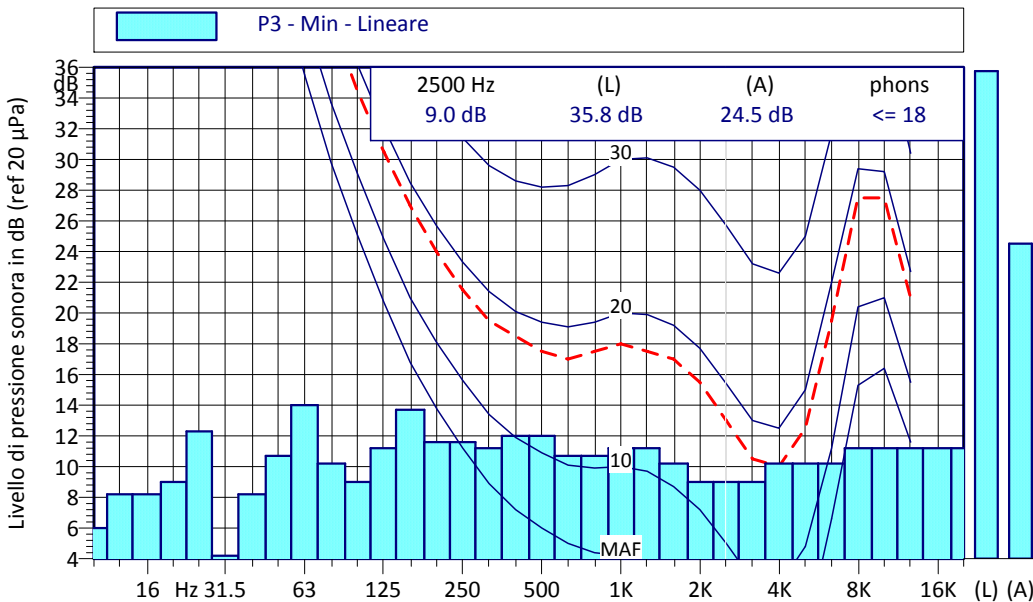
Curva cumulativa e distributiva dei livelli sonori



Spettro in frequenza della misura



Spettro dei minimi (ricerca componenti tonali)



P3 Min - Lineare			
Hz	dB	Hz	dB
10 Hz	6.0 dB	12.5 Hz	8.2 dB
16 Hz	8.2 dB	20 Hz	9.0 dB
25 Hz	12.3 dB	31.5 Hz	4.2 dB
40 Hz	8.2 dB	50 Hz	10.7 dB
63 Hz	14.0 dB	80 Hz	10.2 dB
100 Hz	9.0 dB	125 Hz	11.2 dB
160 Hz	13.7 dB	200 Hz	11.6 dB
250 Hz	11.6 dB	315 Hz	11.2 dB
400 Hz	12.0 dB	500 Hz	12.0 dB
630 Hz	10.7 dB	800 Hz	10.7 dB
1000 Hz	11.2 dB	1250 Hz	11.2 dB
1600 Hz	10.2 dB	2000 Hz	9.0 dB
2500 Hz	9.0 dB	3150 Hz	9.0 dB
4000 Hz	10.2 dB	5000 Hz	10.2 dB
6300 Hz	10.2 dB	8000 Hz	11.2 dB
10000 Hz	11.2 dB	12500 Hz	11.2 dB
16000 Hz	11.2 dB	20000 Hz	11.2 dB

Valori acustici principali [dB(A)]

Lmin(A): 27.3 Lmax(A): 68.9

Leq(A) : 43.7

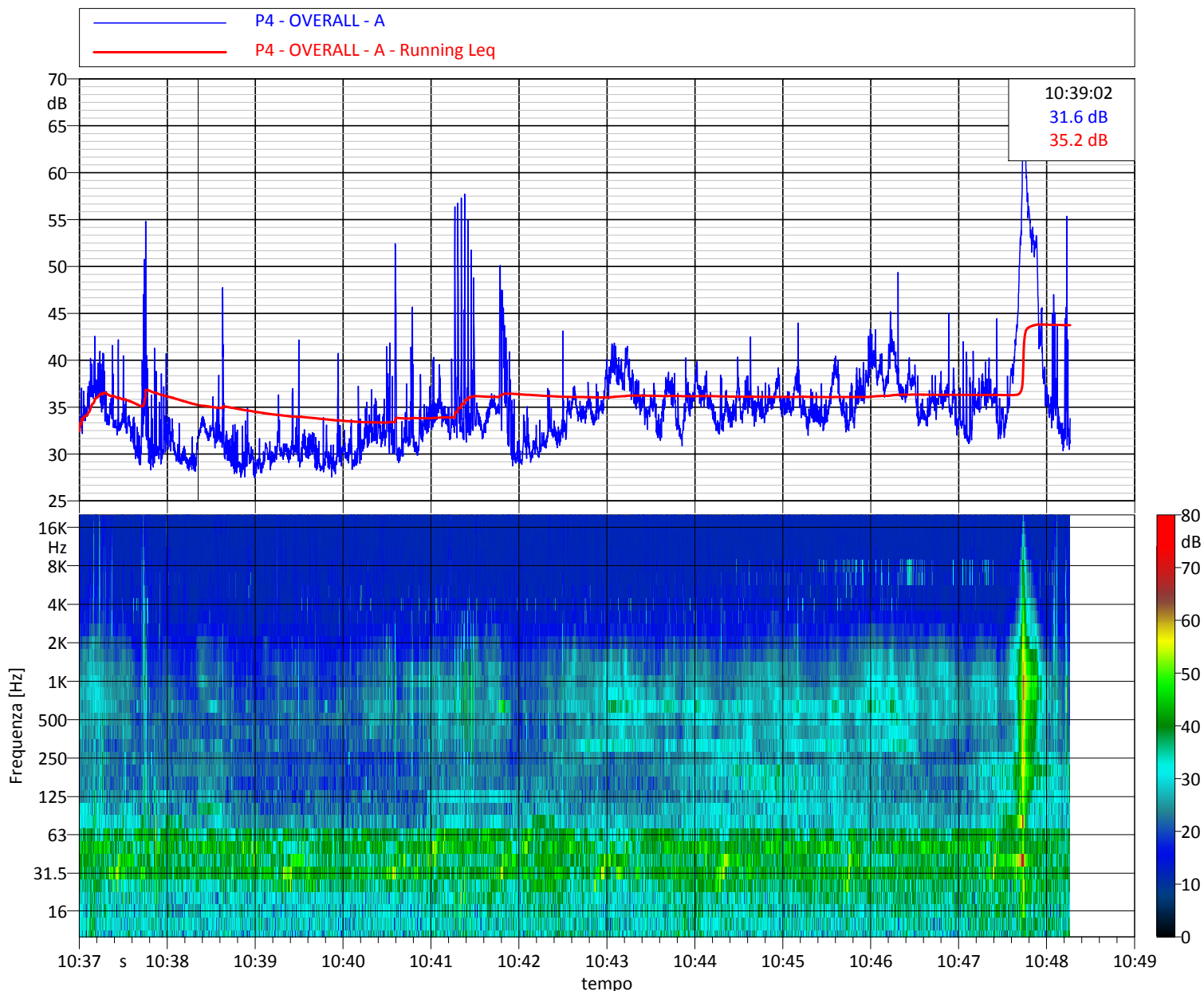
L1: 54.1 L5: 41.2 L10: 38.6

L50: 34.0 L90: 29.6 L95: 29.1 L99: 28.3

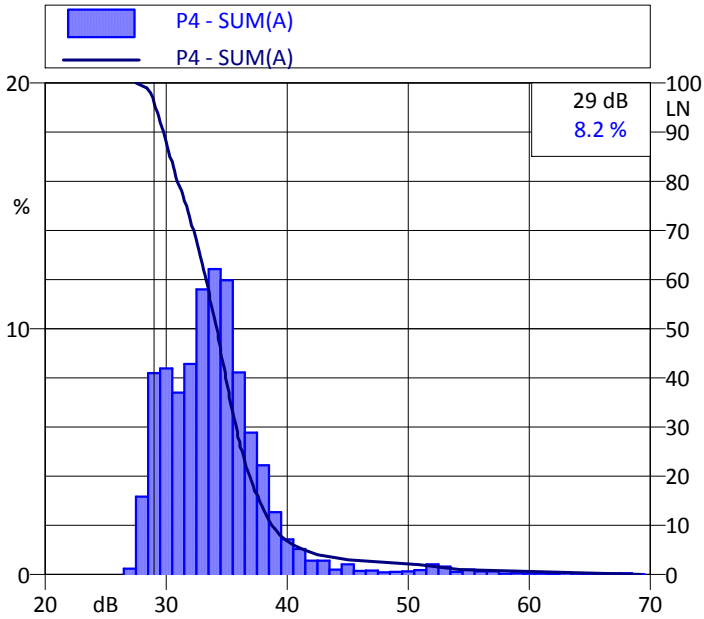
Note:

passaggi di auto, cantiere a distanza

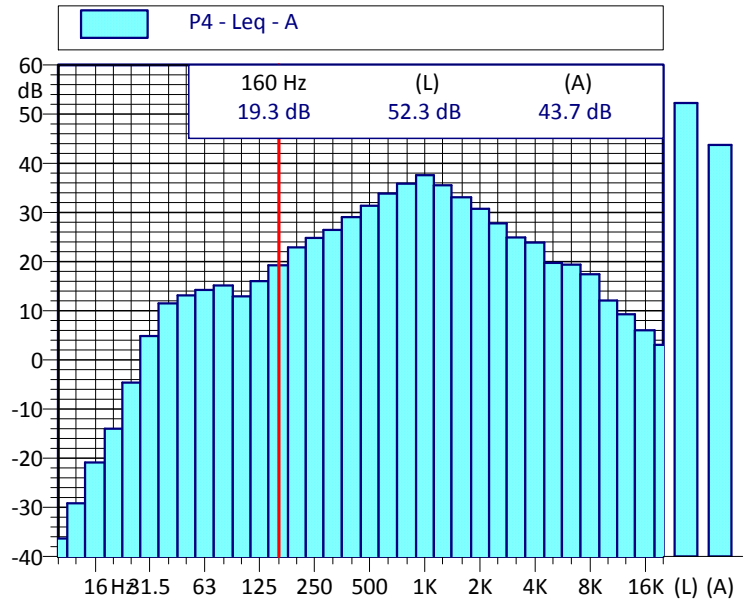
Andamento temporale dei livelli pesati A e dello spettro



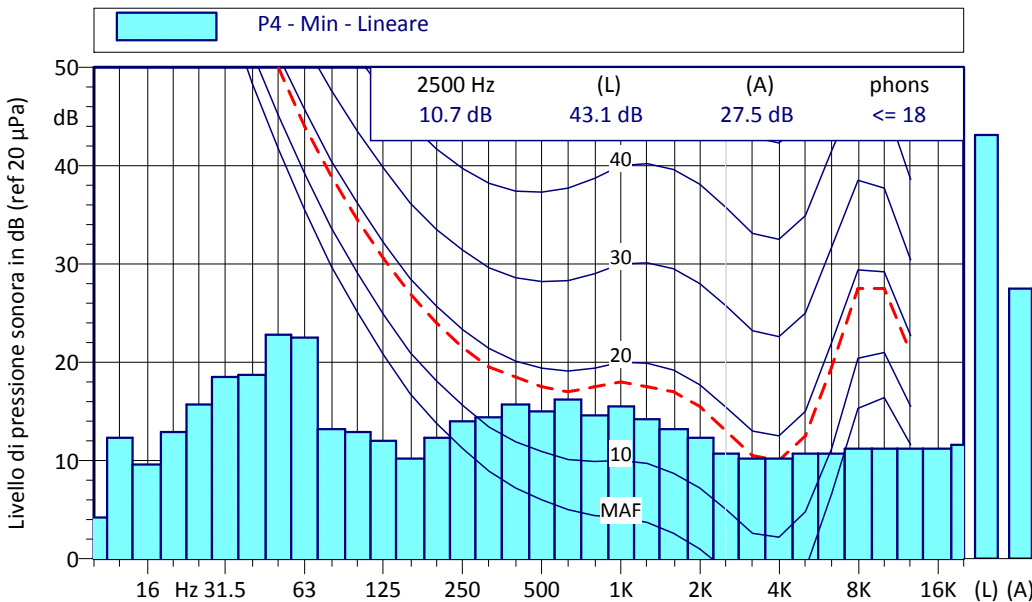
Curva cumulativa e distributiva dei livelli sonori



Spettro in frequenza della misura



Spettro dei minimi (ricerca componenti tonali)



P4 Min - Lineare			
Hz	dB	Hz	dB
10 Hz	4.2 dB	12.5 Hz	12.3 dB
16 Hz	9.6 dB	20 Hz	12.9 dB
25 Hz	15.7 dB	31.5 Hz	18.5 dB
40 Hz	18.7 dB	50 Hz	22.8 dB
63 Hz	22.5 dB	80 Hz	13.2 dB
100 Hz	12.9 dB	125 Hz	12.0 dB
160 Hz	10.2 dB	200 Hz	12.3 dB
250 Hz	14.0 dB	315 Hz	14.4 dB
400 Hz	15.7 dB	500 Hz	15.0 dB
630 Hz	16.2 dB	800 Hz	14.6 dB
1000 Hz	15.5 dB	1250 Hz	14.2 dB
1600 Hz	13.2 dB	2000 Hz	12.3 dB
2500 Hz	10.7 dB	3150 Hz	10.2 dB
4000 Hz	10.2 dB	5000 Hz	10.7 dB
6300 Hz	10.7 dB	8000 Hz	11.2 dB
10000 Hz	11.2 dB	12500 Hz	11.2 dB
16000 Hz	11.2 dB	20000 Hz	11.6 dB

Valori acustici principali [dB(A)]

Lmin(A): 29.9 Lmax(A): 61.7

Leq(A) : 37.5

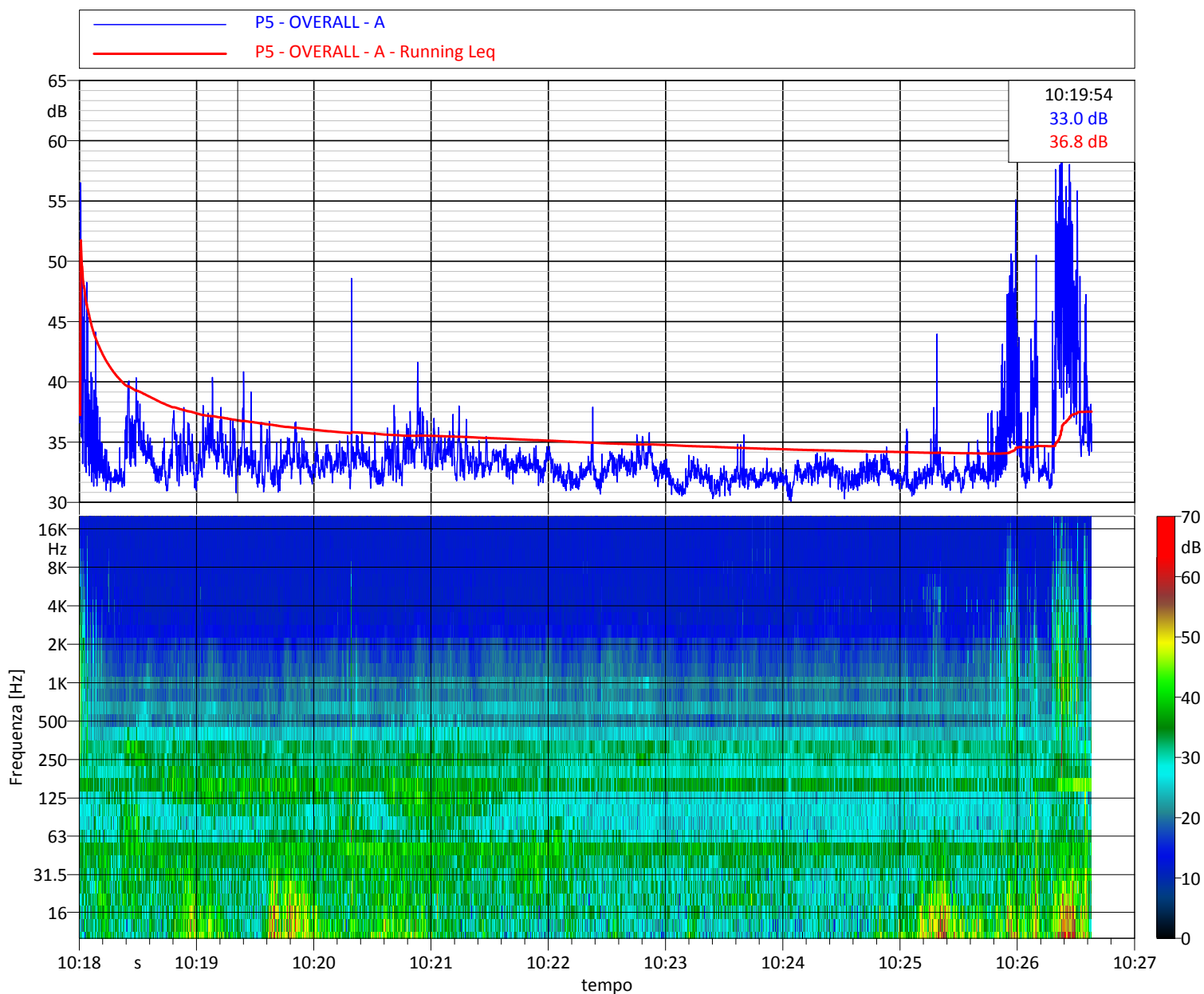
L1: 48.2 L5: 37.8 L10: 35.6

L50: 32.8 L90: 31.5 L95: 31.2 L99: 30.7

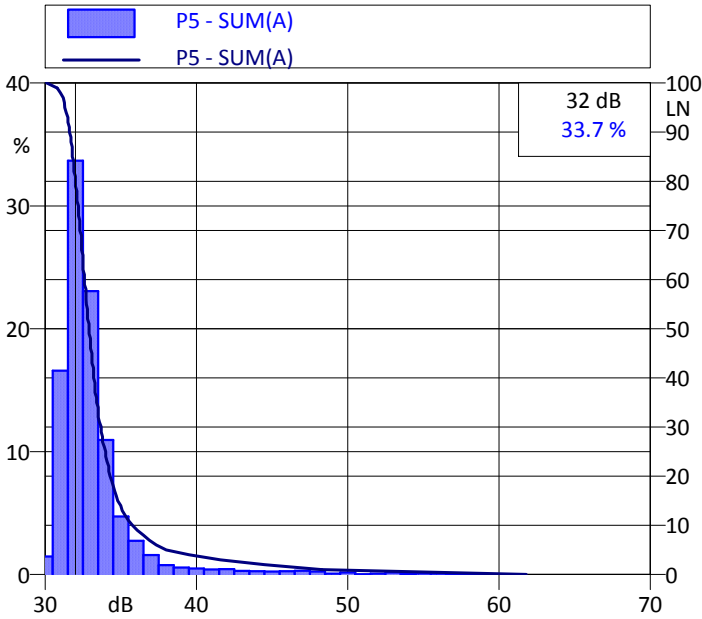
Note:

gregge di pecore, mezzi agricoli nei campi

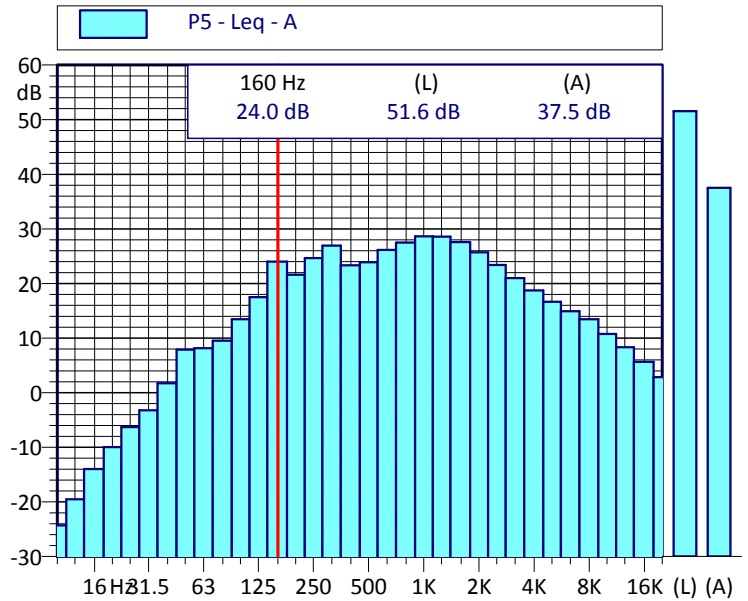
Andamento temporale dei livelli pesati A e dello spettro



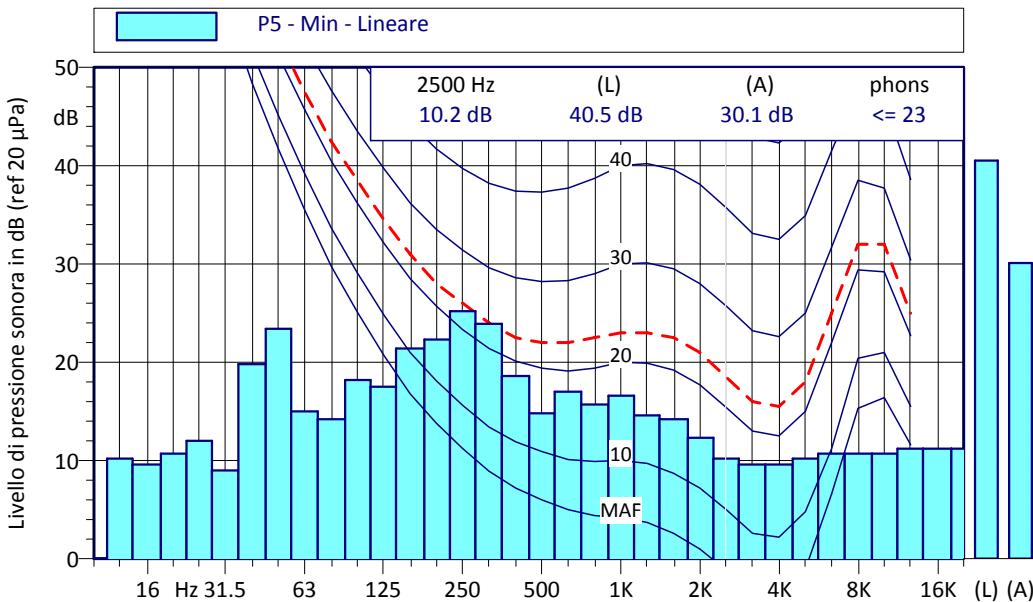
Curva cumulativa e distributiva dei livelli sonori



Spettro in frequenza della misura



Spettro dei minimi (ricerca componenti tonali)



P5 Min - Lineare			
Hz	dB	Hz	dB
10 Hz	0.0 dB	12.5 Hz	10.2 dB
16 Hz	9.6 dB	20 Hz	10.7 dB
25 Hz	12.0 dB	31.5 Hz	9.0 dB
40 Hz	19.8 dB	50 Hz	23.4 dB
63 Hz	15.0 dB	80 Hz	14.2 dB
100 Hz	18.2 dB	125 Hz	17.5 dB
160 Hz	21.4 dB	200 Hz	22.3 dB
250 Hz	25.2 dB	315 Hz	23.9 dB
400 Hz	18.6 dB	500 Hz	14.8 dB
630 Hz	17.0 dB	800 Hz	15.7 dB
1000 Hz	16.6 dB	1250 Hz	14.6 dB
1600 Hz	14.2 dB	2000 Hz	12.3 dB
2500 Hz	10.2 dB	3150 Hz	9.6 dB
4000 Hz	9.6 dB	5000 Hz	10.2 dB
6300 Hz	10.7 dB	8000 Hz	10.7 dB
10000 Hz	10.7 dB	12500 Hz	11.2 dB
16000 Hz	11.2 dB	20000 Hz	11.2 dB

Valori acustici principali [dB(A)]

Lmin(A): 24.7 Lmax(A): 77.5

Leq(A) : 54.9

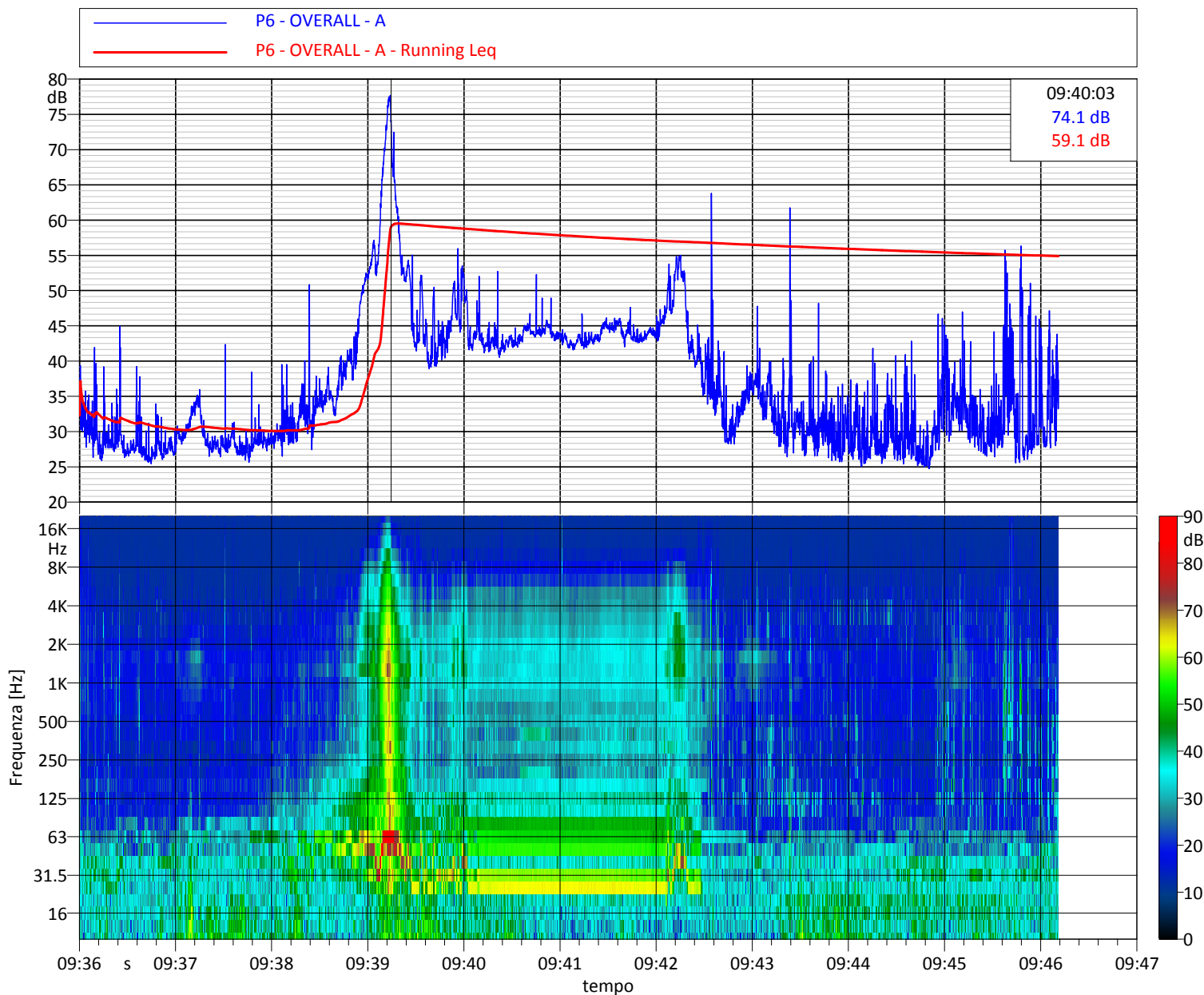
L1: 67.4 L5: 52.3 L10: 46.9

L50: 33.9 L90: 27.3 L95: 26.7 L99: 25.8

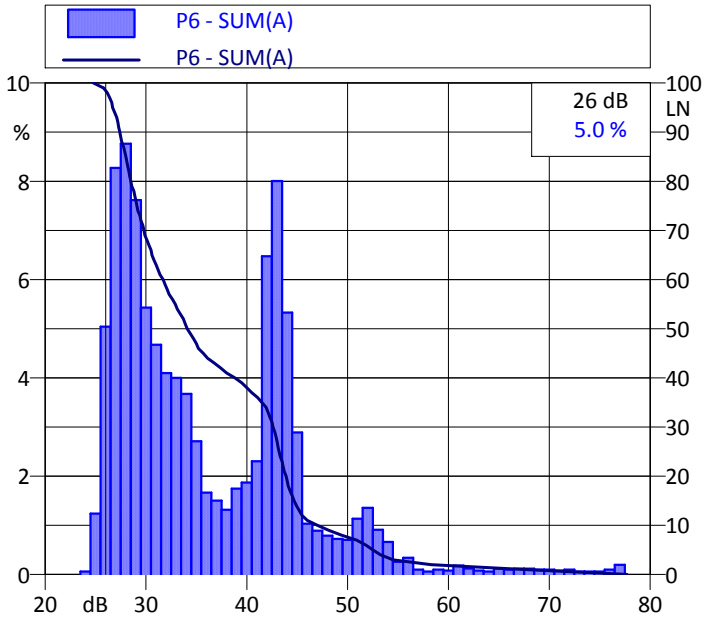
Note:

trattore, scarico materiali da mezzi agricoli

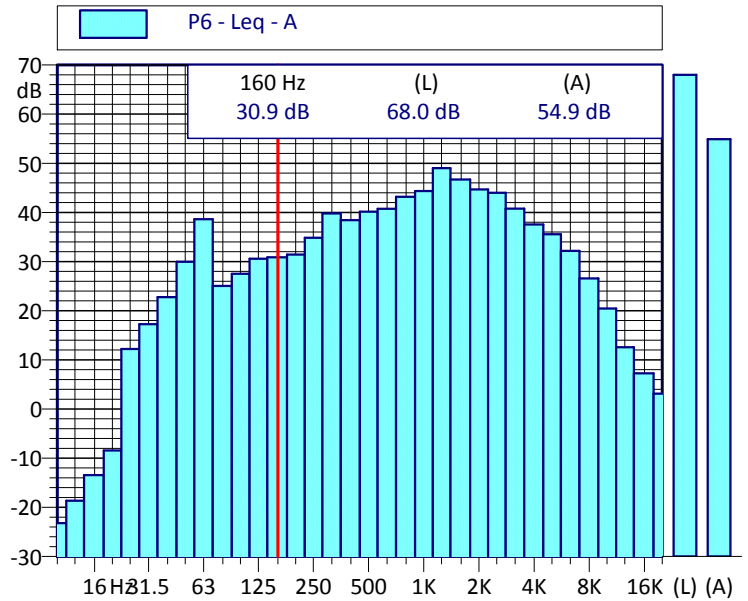
Andamento temporale dei livelli pesati A e dello spettro



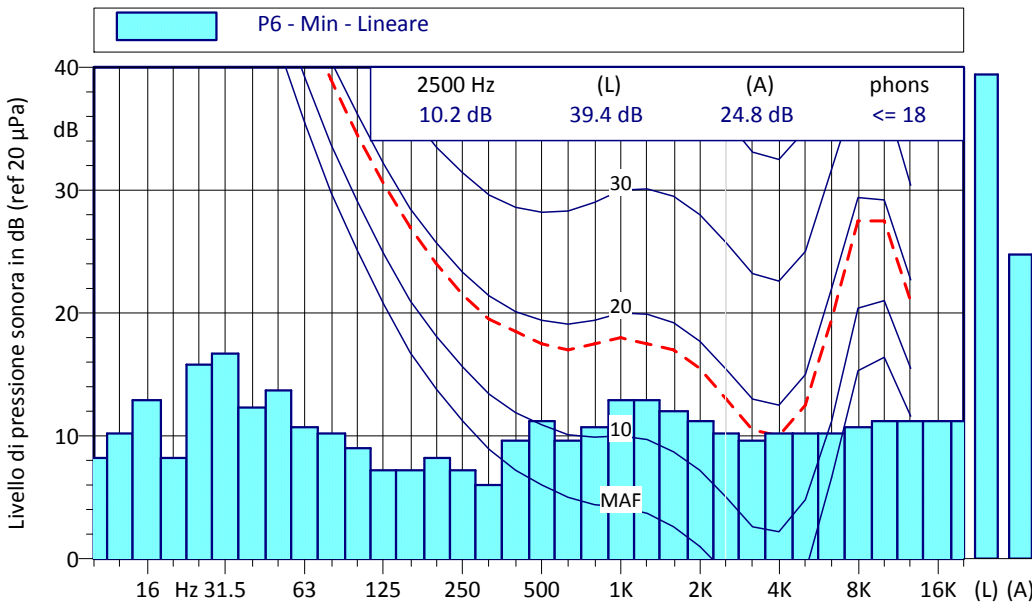
Curva cumulativa e distributiva dei livelli sonori



Spettro in frequenza della misura



Spettro dei minimi (ricerca componenti tonali)



P6 Min - Lineare			
Hz	dB	Hz	dB
10 Hz	8.2 dB	12.5 Hz	10.2 dB
16 Hz	12.9 dB	20 Hz	8.2 dB
25 Hz	15.8 dB	31.5 Hz	16.7 dB
40 Hz	12.3 dB	50 Hz	13.7 dB
63 Hz	10.7 dB	80 Hz	10.2 dB
100 Hz	9.0 dB	125 Hz	7.2 dB
160 Hz	7.2 dB	200 Hz	8.2 dB
250 Hz	7.2 dB	315 Hz	6.0 dB
400 Hz	9.6 dB	500 Hz	11.2 dB
630 Hz	9.6 dB	800 Hz	10.7 dB
1000 Hz	12.9 dB	1250 Hz	12.9 dB
1600 Hz	12.0 dB	2000 Hz	11.2 dB
2500 Hz	10.2 dB	3150 Hz	9.6 dB
4000 Hz	10.2 dB	5000 Hz	10.2 dB
6300 Hz	10.2 dB	8000 Hz	10.7 dB
10000 Hz	11.2 dB	12500 Hz	11.2 dB
16000 Hz	11.2 dB	20000 Hz	11.2 dB

Valori acustici principali [dB(A)]

Lmin(A): 23.0 Lmax(A): 72.6

Leq(A) : 48.0

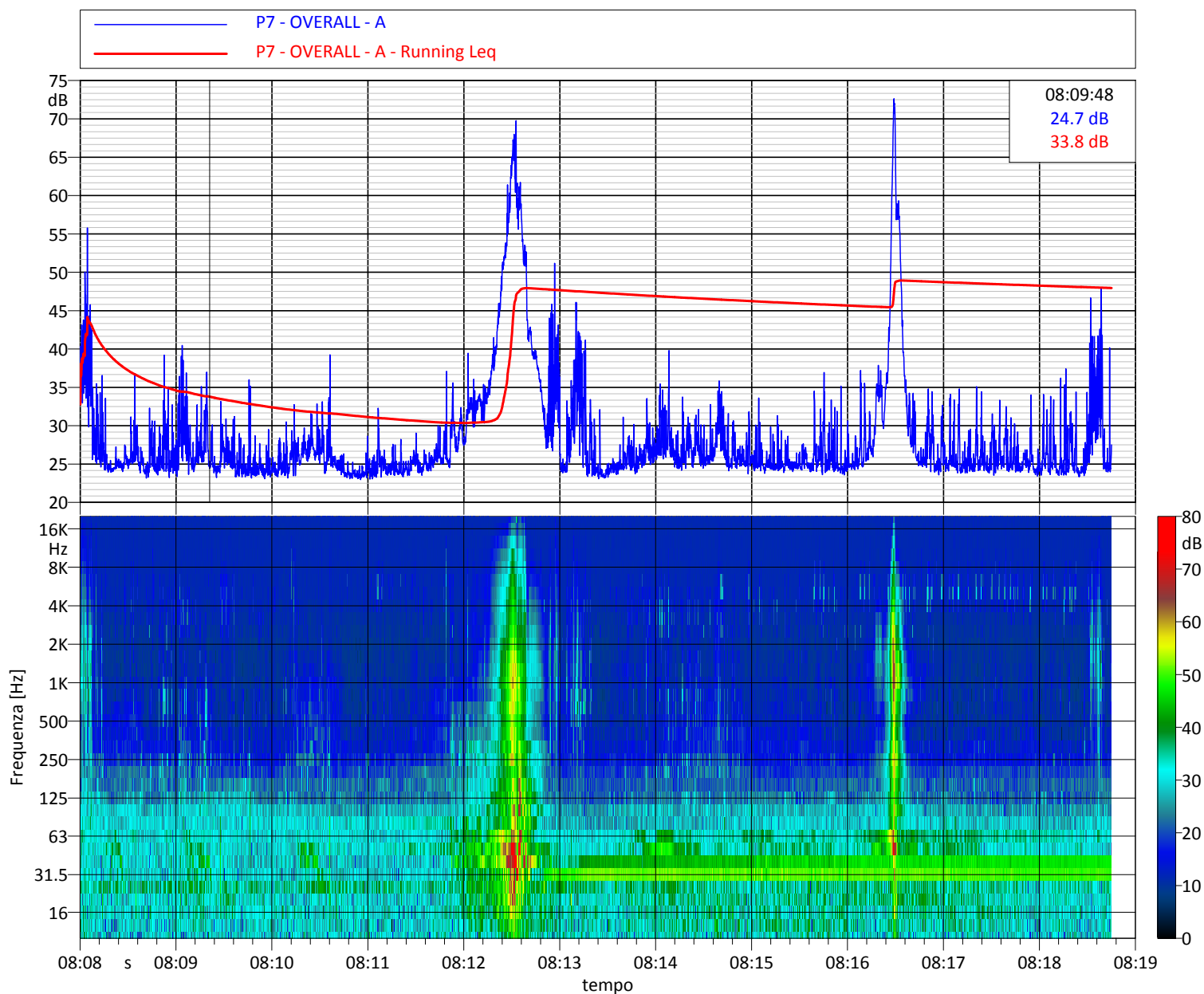
L1: 60.8 L5: 42.2 L10: 35.0

L50: 25.7 L90: 24.1 L95: 23.8 L99: 23.4

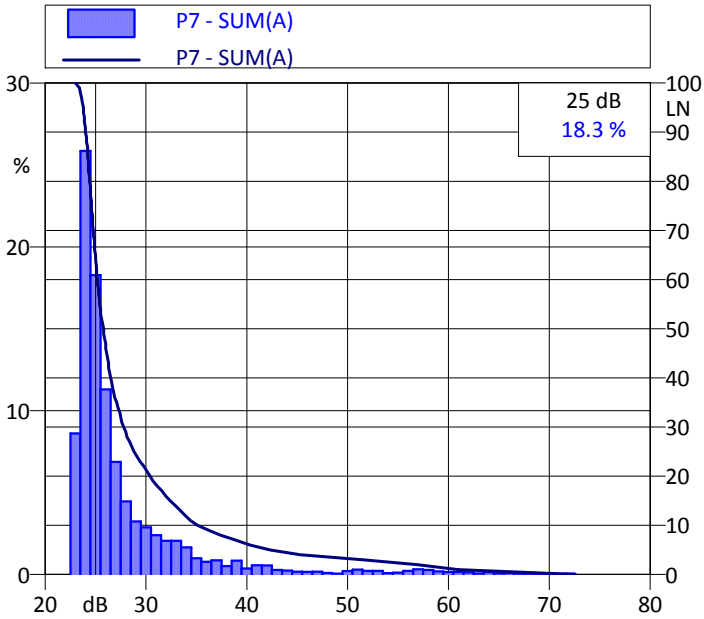
Note:

passaggi auto

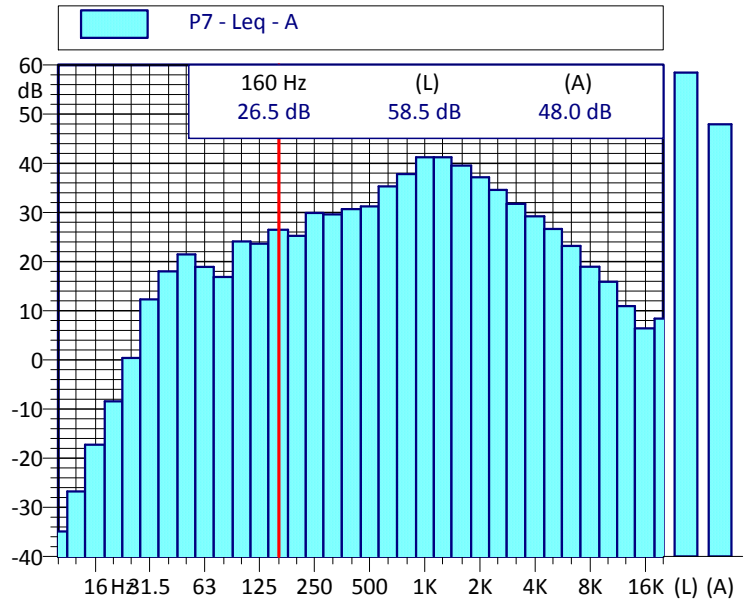
Andamento temporale dei livelli pesati A e dello spettro



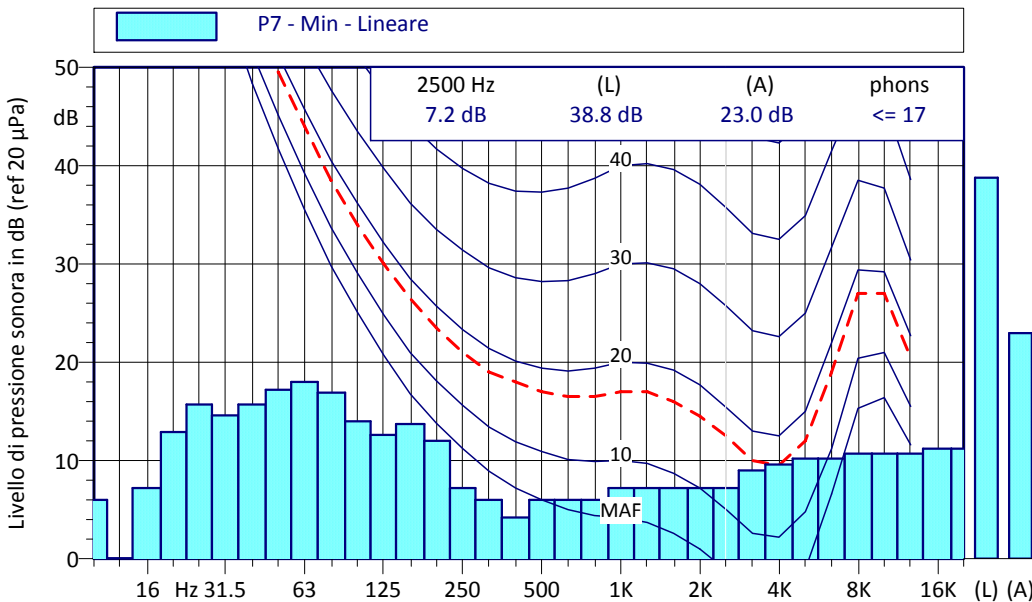
Curva cumulativa e distributiva dei livelli sonori



Spettro in frequenza della misura



Spettro dei minimi (ricerca componenti tonali)



P7 Min - Lineare			
Hz	dB	Hz	dB
10 Hz	6.0 dB	12.5 Hz	0.0 dB
16 Hz	7.2 dB	20 Hz	12.9 dB
25 Hz	15.7 dB	31.5 Hz	14.6 dB
40 Hz	15.7 dB	50 Hz	17.2 dB
63 Hz	18.0 dB	80 Hz	16.9 dB
100 Hz	14.0 dB	125 Hz	12.6 dB
160 Hz	13.7 dB	200 Hz	12.0 dB
250 Hz	7.2 dB	315 Hz	6.0 dB
400 Hz	4.2 dB	500 Hz	6.0 dB
630 Hz	6.0 dB	800 Hz	6.0 dB
1000 Hz	7.2 dB	1250 Hz	7.2 dB
1600 Hz	7.2 dB	2000 Hz	7.2 dB
2500 Hz	7.2 dB	3150 Hz	9.0 dB
4000 Hz	9.6 dB	5000 Hz	10.2 dB
6300 Hz	10.2 dB	8000 Hz	10.7 dB
10000 Hz	10.7 dB	12500 Hz	10.7 dB
16000 Hz	11.2 dB	20000 Hz	11.2 dB

Valori acustici principali [dB(A)]

Lmin(A): 27.7 Lmax(A): 46.1

Leq(A) : 32.7

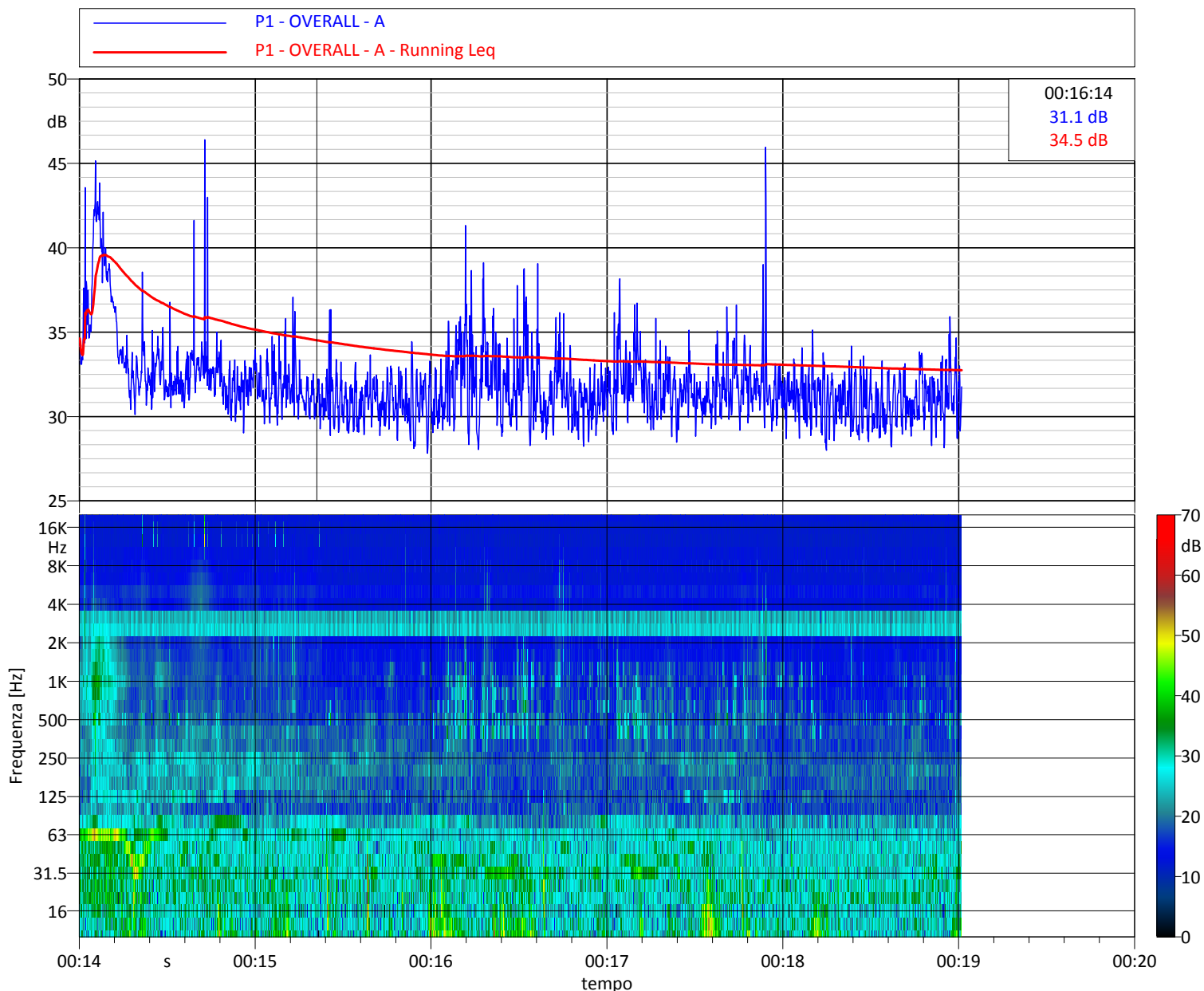
L1: 41.1 L5: 35.7 L10: 33.9

L50: 31.4 L90: 29.5 L95: 29.1 L99: 28.5

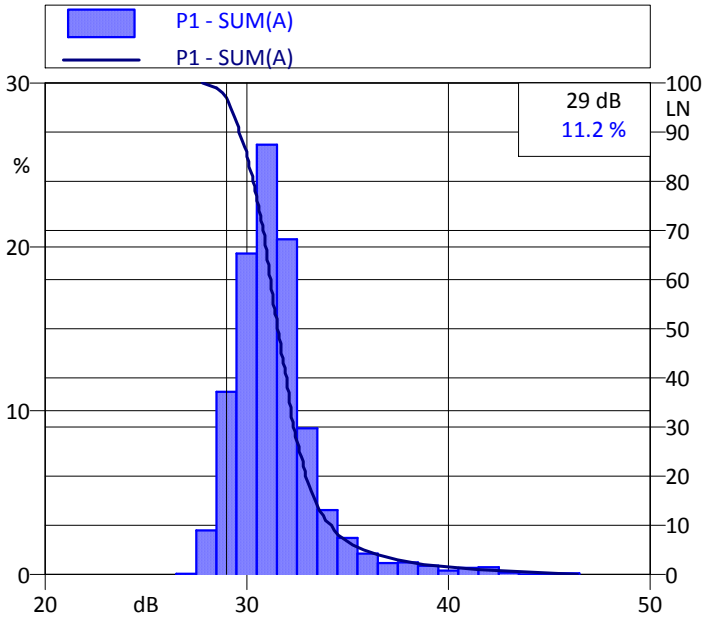
Note:

-

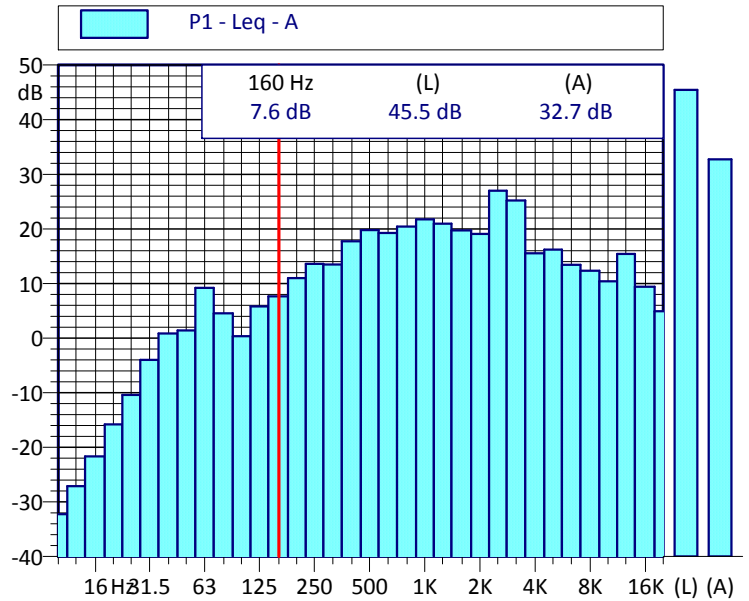
Andamento temporale dei livelli pesati A e dello spettro



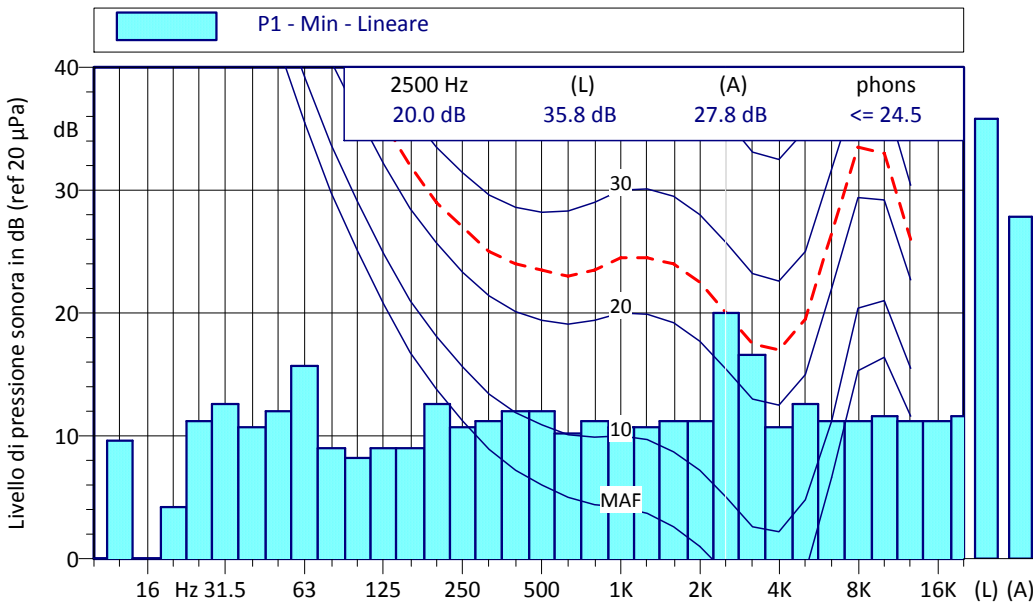
Curva cumulativa e distributiva dei livelli sonori



Spettro in frequenza della misura



Spettro dei minimi (ricerca componenti tonali)



P1 Min - Lineare			
Hz	dB	Hz	dB
10 Hz	0.0 dB	12.5 Hz	9.6 dB
16 Hz	0.0 dB	20 Hz	4.2 dB
25 Hz	11.2 dB	31.5 Hz	12.6 dB
40 Hz	10.7 dB	50 Hz	12.0 dB
63 Hz	15.7 dB	80 Hz	9.0 dB
100 Hz	8.2 dB	125 Hz	9.0 dB
160 Hz	9.0 dB	200 Hz	12.6 dB
250 Hz	10.7 dB	315 Hz	11.2 dB
400 Hz	12.0 dB	500 Hz	12.0 dB
630 Hz	10.2 dB	800 Hz	11.2 dB
1000 Hz	10.7 dB	1250 Hz	10.7 dB
1600 Hz	11.2 dB	2000 Hz	11.2 dB
2500 Hz	20.0 dB	3150 Hz	16.6 dB
4000 Hz	10.7 dB	5000 Hz	12.6 dB
6300 Hz	11.2 dB	8000 Hz	11.2 dB
10000 Hz	11.6 dB	12500 Hz	11.2 dB
16000 Hz	11.2 dB	20000 Hz	11.6 dB

Valori acustici principali [dB(A)]

Lmin(A): 27.3 Lmax(A): 50.7

Leq(A) : 36.1

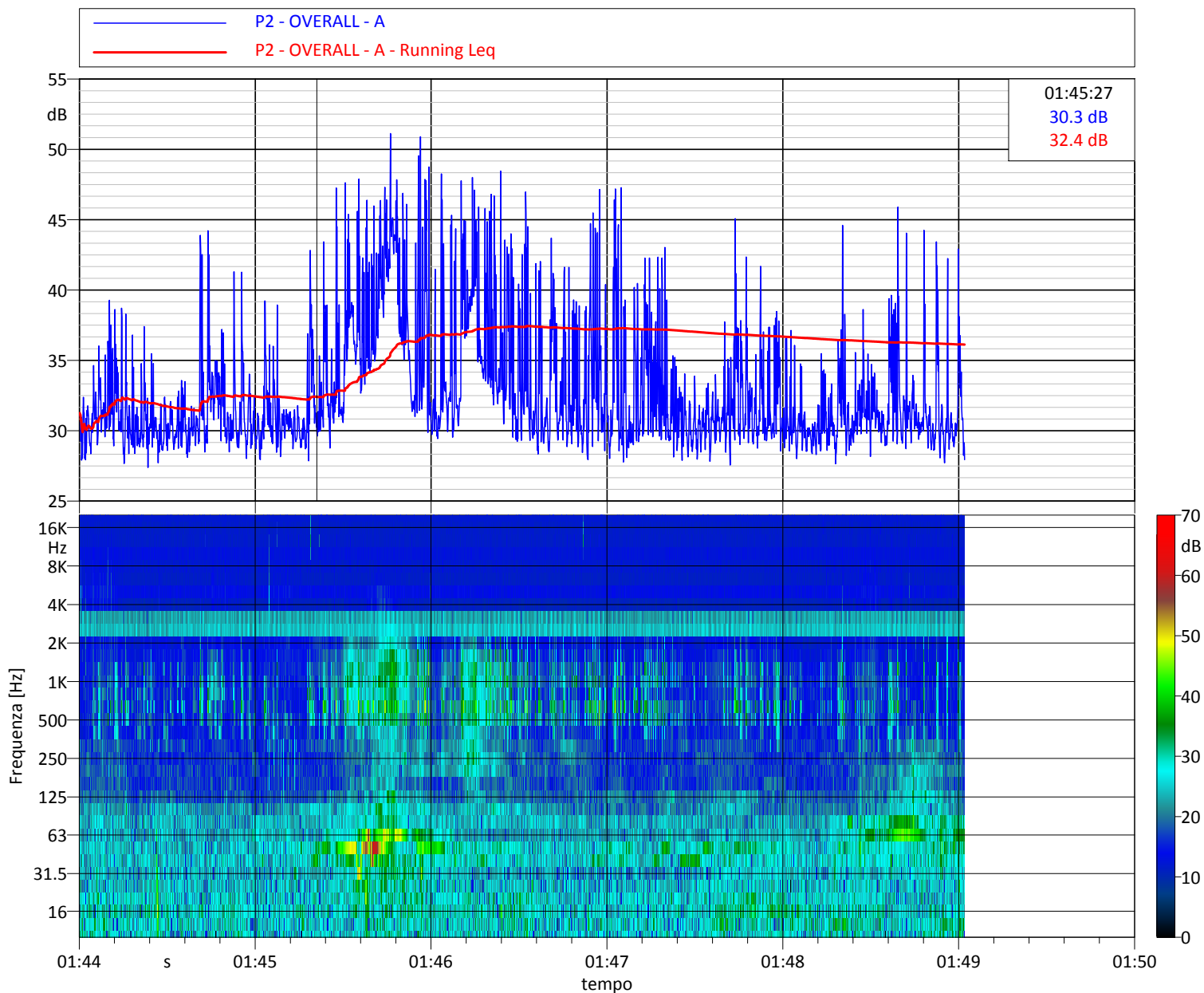
L1: 46.7 L5: 42.5 L10: 39.3

L50: 31.2 L90: 29.1 L95: 28.7 L99: 28.0

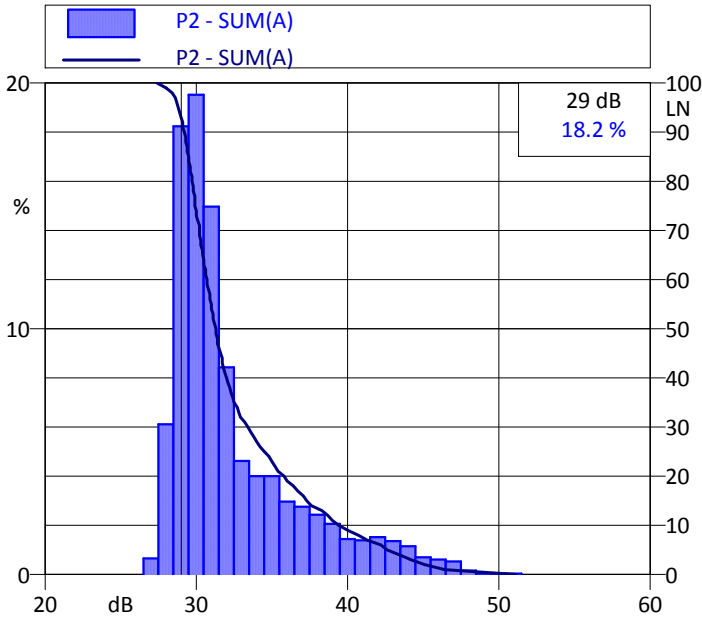
Note:

passaggi di auto in lontananza, cani

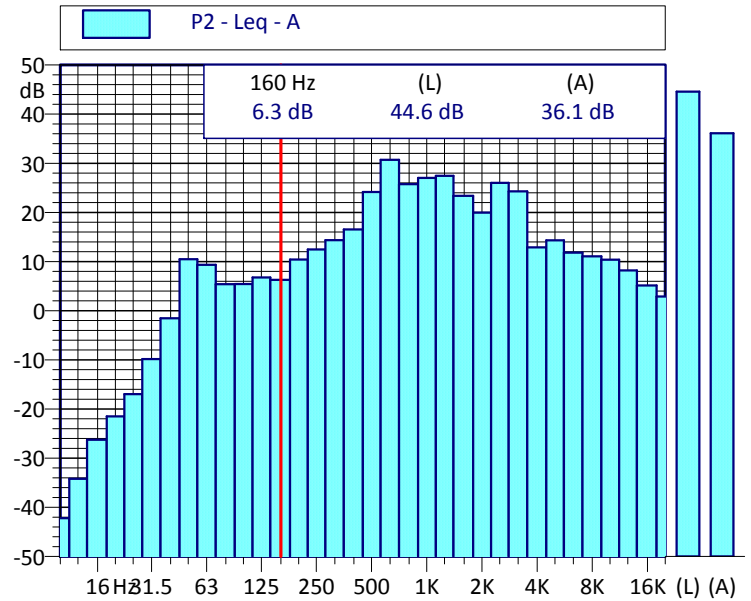
Andamento temporale dei livelli pesati A e dello spettro



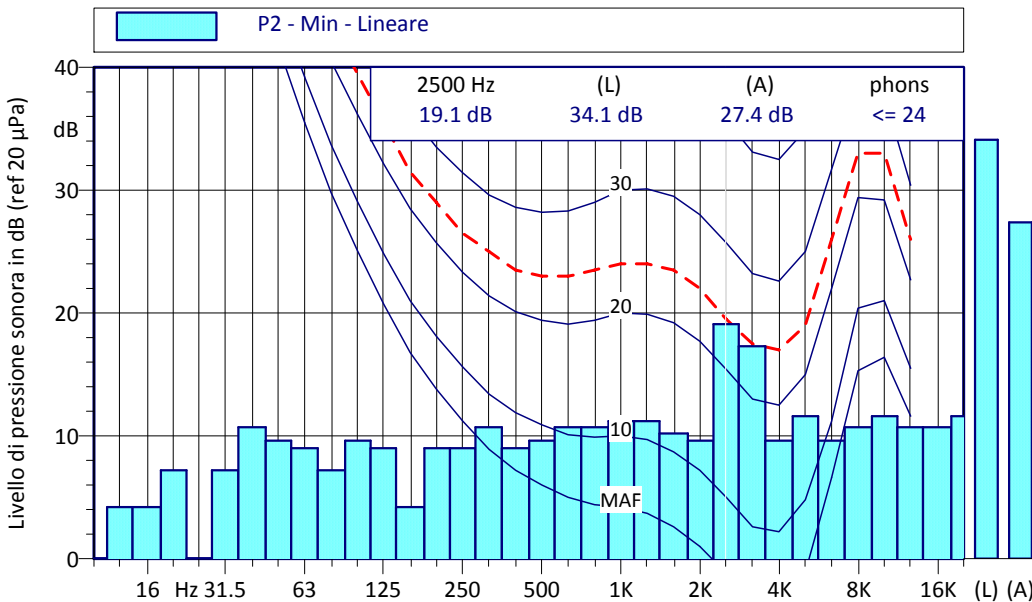
Curva cumulativa e distributiva dei livelli sonori



Spettro in frequenza della misura



Spettro dei minimi (ricerca componenti tonali)



P2 Min - Lineare			
Hz	dB	Hz	dB
10 Hz	0.0 dB	12.5 Hz	4.2 dB
16 Hz	4.2 dB	20 Hz	7.2 dB
25 Hz	0.0 dB	31.5 Hz	7.2 dB
40 Hz	10.7 dB	50 Hz	9.6 dB
63 Hz	9.0 dB	80 Hz	7.2 dB
100 Hz	9.6 dB	125 Hz	9.0 dB
160 Hz	4.2 dB	200 Hz	9.0 dB
250 Hz	9.0 dB	315 Hz	10.7 dB
400 Hz	9.0 dB	500 Hz	9.6 dB
630 Hz	10.7 dB	800 Hz	10.7 dB
1000 Hz	11.2 dB	1250 Hz	11.2 dB
1600 Hz	10.2 dB	2000 Hz	9.6 dB
2500 Hz	19.1 dB	3150 Hz	17.3 dB
4000 Hz	9.6 dB	5000 Hz	11.6 dB
6300 Hz	9.6 dB	8000 Hz	10.7 dB
10000 Hz	11.6 dB	12500 Hz	10.7 dB
16000 Hz	10.7 dB	20000 Hz	11.6 dB

Valori acustici principali [dB(A)]

Lmin(A): 26.7 Lmax(A): 57.4

Leq(A) : 37.5

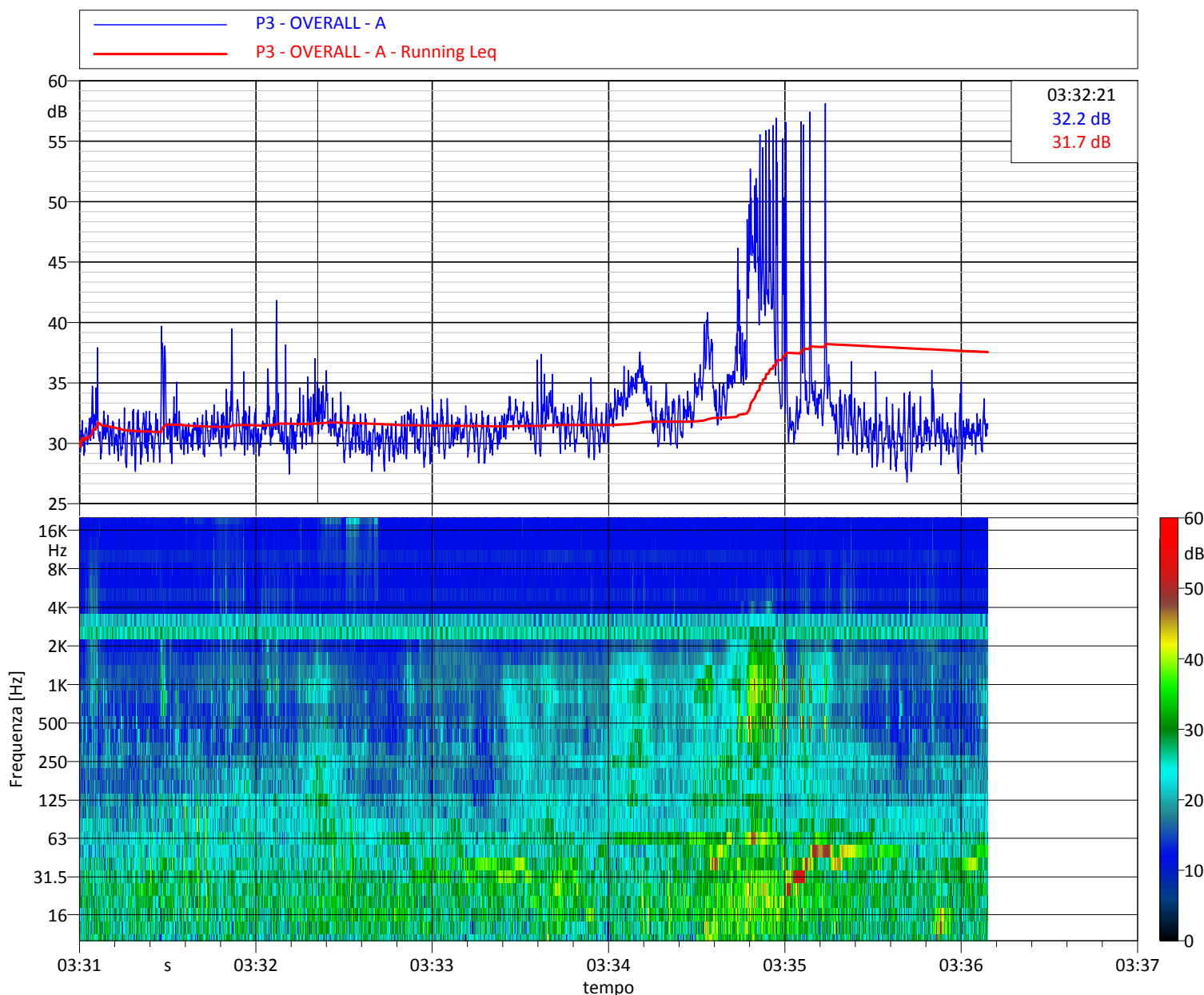
L1: 50.4 L5: 38.5 L10: 35.1

L50: 31.3 L90: 29.4 L95: 29.0 L99: 28.0

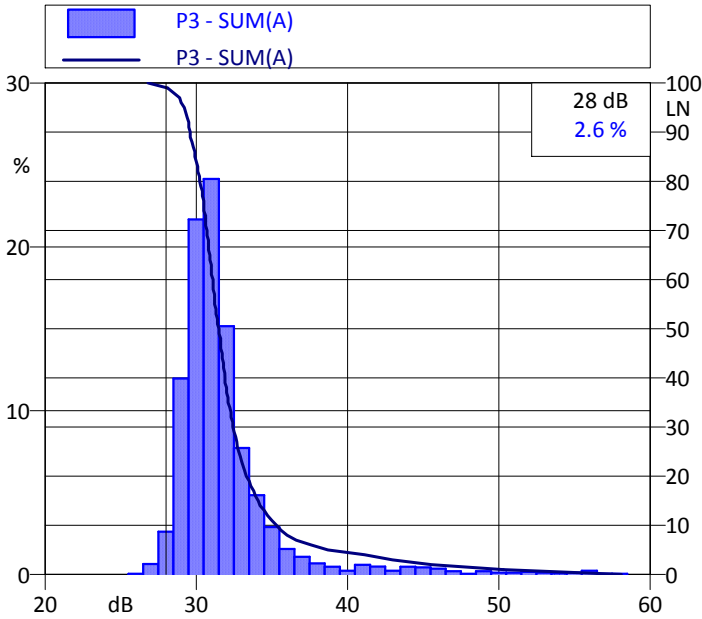
Note:

cani, auto, grilli

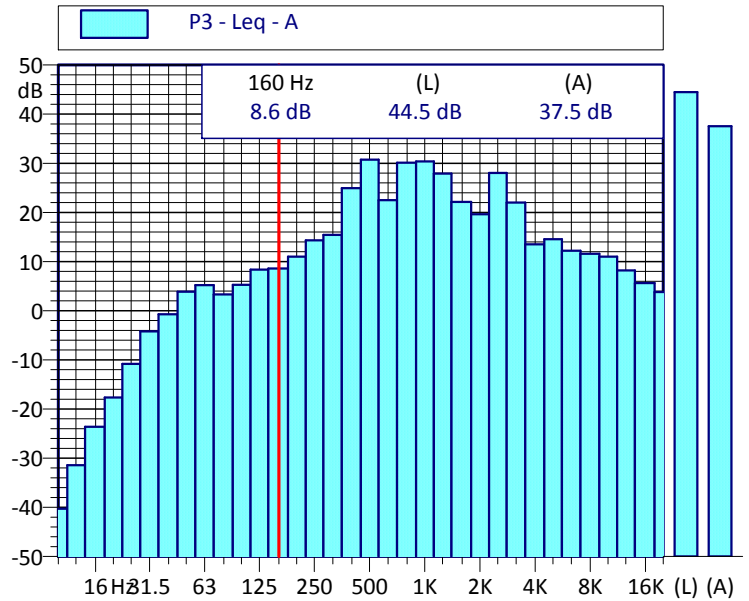
Andamento temporale dei livelli pesati A e dello spettro



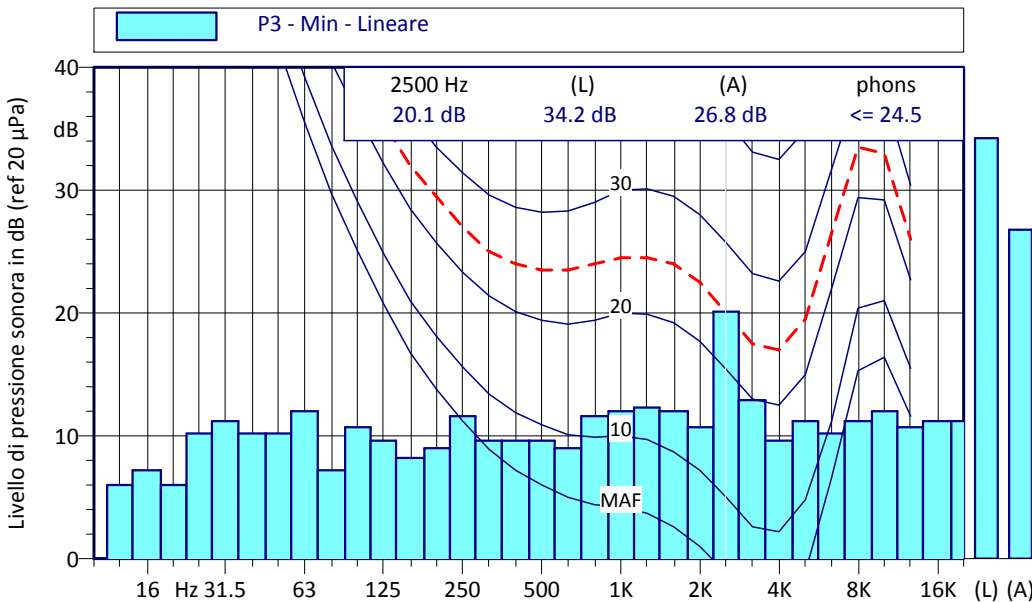
Curva cumulativa e distributiva dei livelli sonori



Spettro in frequenza della misura



Spettro dei minimi (ricerca componenti tonali)



P3 Min - Lineare			
Hz	dB	Hz	dB
10 Hz	0.0 dB	12.5 Hz	6.0 dB
16 Hz	7.2 dB	20 Hz	6.0 dB
25 Hz	10.2 dB	31.5 Hz	11.2 dB
40 Hz	10.2 dB	50 Hz	10.2 dB
63 Hz	12.0 dB	80 Hz	7.2 dB
100 Hz	10.7 dB	125 Hz	9.6 dB
160 Hz	8.2 dB	200 Hz	9.0 dB
250 Hz	11.6 dB	315 Hz	9.6 dB
400 Hz	9.6 dB	500 Hz	9.6 dB
630 Hz	9.0 dB	800 Hz	11.6 dB
1000 Hz	12.0 dB	1250 Hz	12.3 dB
1600 Hz	12.0 dB	2000 Hz	10.7 dB
2500 Hz	20.1 dB	3150 Hz	12.9 dB
4000 Hz	9.6 dB	5000 Hz	11.2 dB
6300 Hz	10.2 dB	8000 Hz	11.2 dB
10000 Hz	12.0 dB	12500 Hz	10.7 dB
16000 Hz	11.2 dB	20000 Hz	11.2 dB

Valori acustici principali [dB(A)]

Lmin(A): 26.7 Lmax(A): 48.8

Leq(A) : 35.6

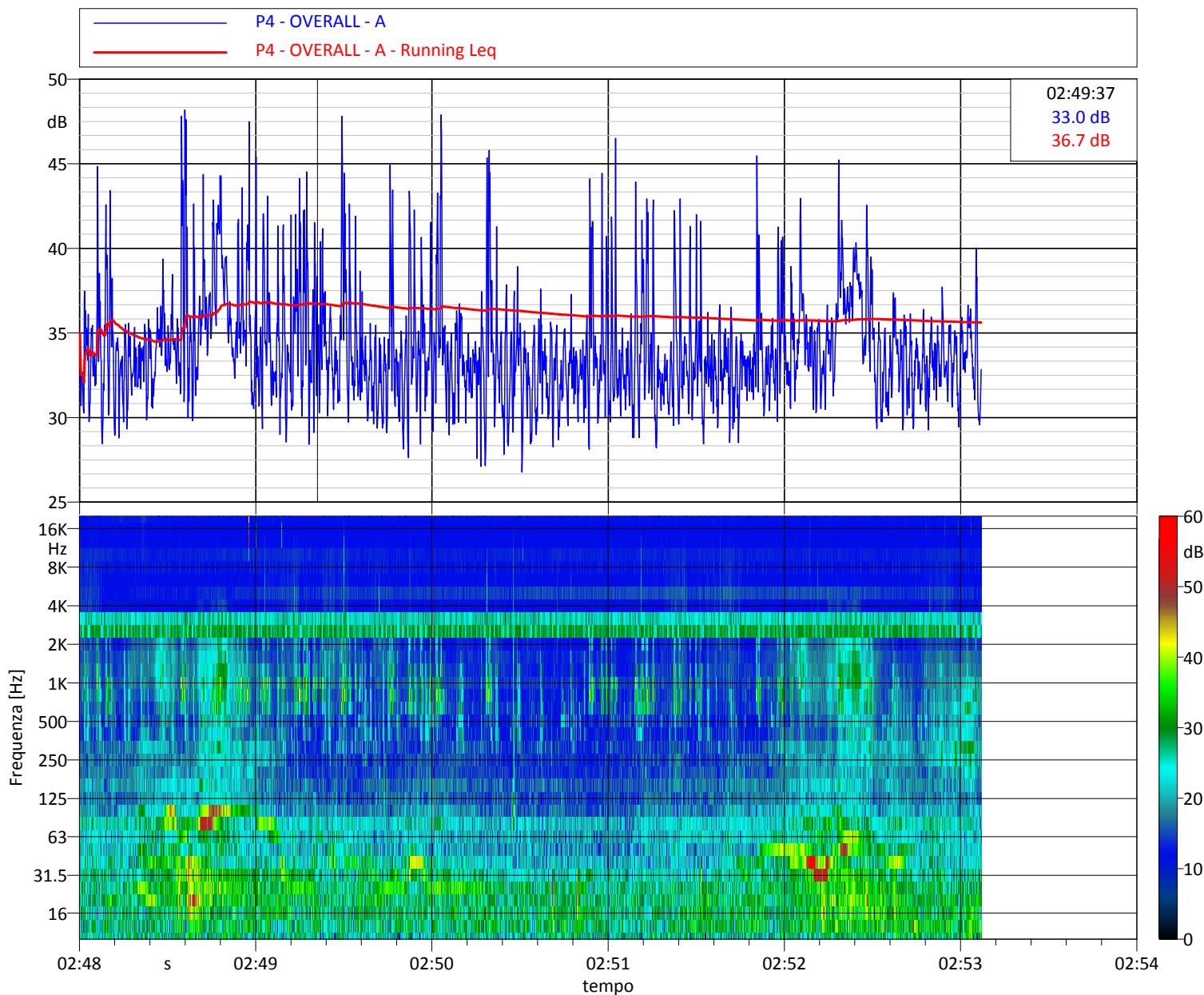
L1: 44.1 L5: 40.3 L10: 38.2

L50: 33.4 L90: 30.5 L95: 29.7 L99: 28.4

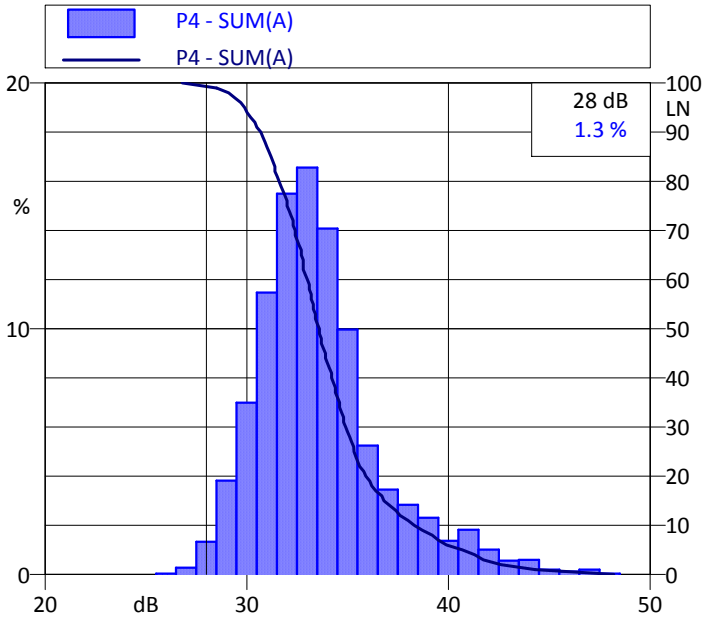
Note:

cani

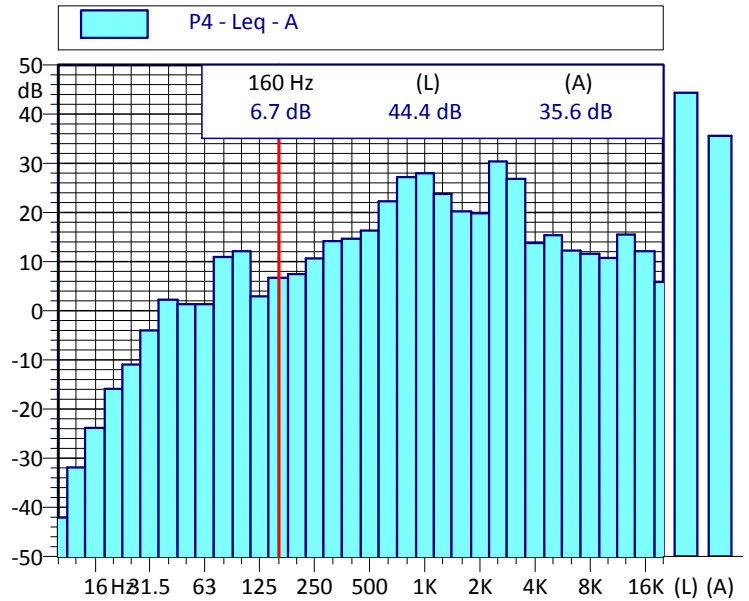
Andamento temporale dei livelli pesati A e dello spettro



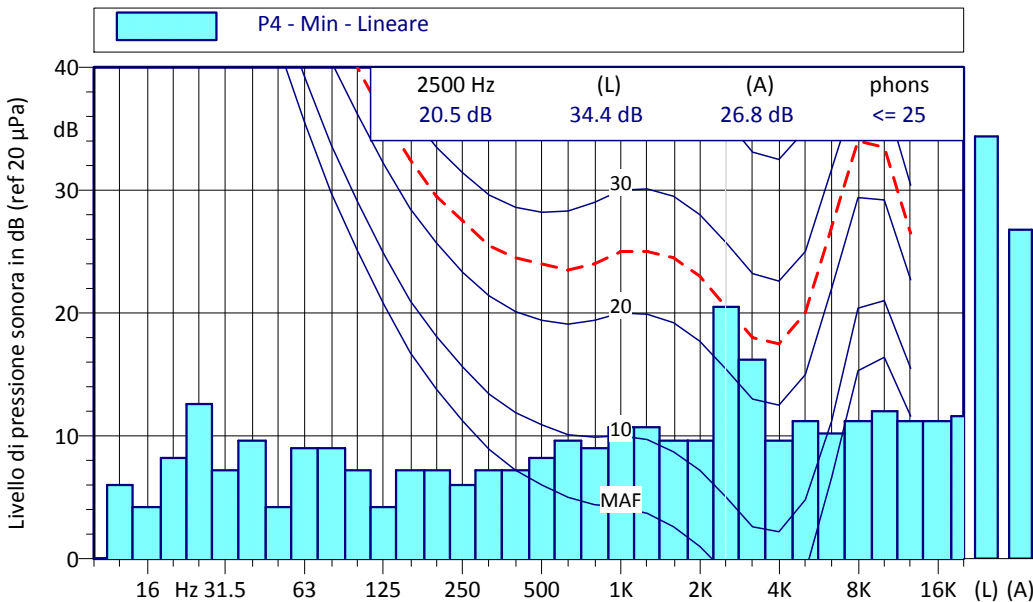
Curva cumulativa e distributiva dei livelli sonori



Spettro in frequenza della misura



Spettro dei minimi (ricerca componenti tonali)



P4 Min - Lineare			
Hz	dB	Hz	dB
10 Hz	0.0 dB	12.5 Hz	6.0 dB
16 Hz	4.2 dB	20 Hz	8.2 dB
25 Hz	12.6 dB	31.5 Hz	7.2 dB
40 Hz	9.6 dB	50 Hz	4.2 dB
63 Hz	9.0 dB	80 Hz	9.0 dB
100 Hz	7.2 dB	125 Hz	4.2 dB
160 Hz	7.2 dB	200 Hz	7.2 dB
250 Hz	6.0 dB	315 Hz	7.2 dB
400 Hz	7.2 dB	500 Hz	8.2 dB
630 Hz	9.6 dB	800 Hz	9.0 dB
1000 Hz	10.7 dB	1250 Hz	10.7 dB
1600 Hz	9.6 dB	2000 Hz	9.6 dB
2500 Hz	20.5 dB	3150 Hz	16.2 dB
4000 Hz	9.6 dB	5000 Hz	11.2 dB
6300 Hz	10.2 dB	8000 Hz	11.2 dB
10000 Hz	12.0 dB	12500 Hz	11.2 dB
16000 Hz	11.2 dB	20000 Hz	11.6 dB

Valori acustici principali [dB(A)]

Lmin(A): 28.0 Lmax(A): 50.3

Leq(A) : 37.5

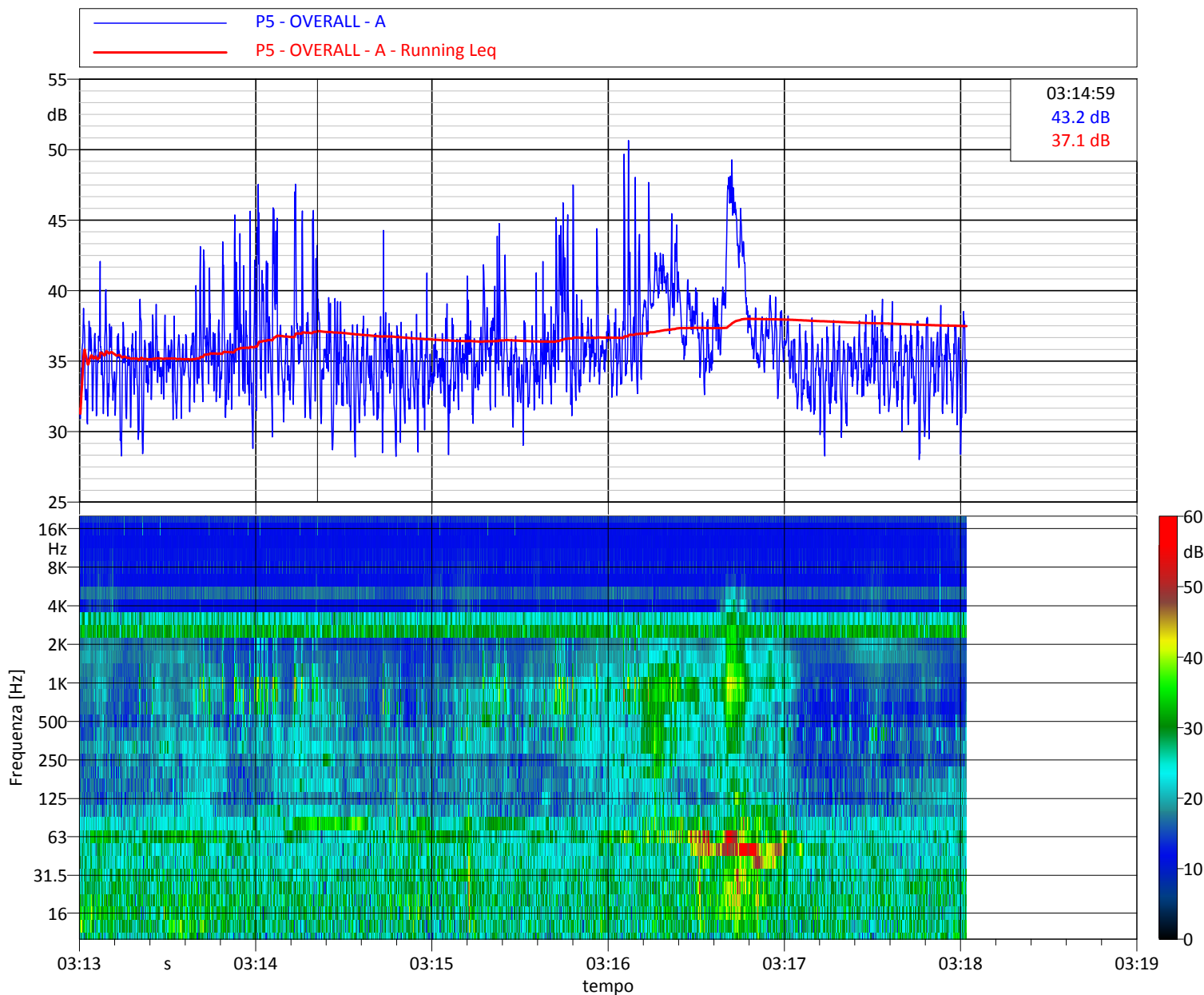
L1: 46.7 L5: 42.2 L10: 39.6

L50: 35.3 L90: 32.1 L95: 31.2 L99: 29.2

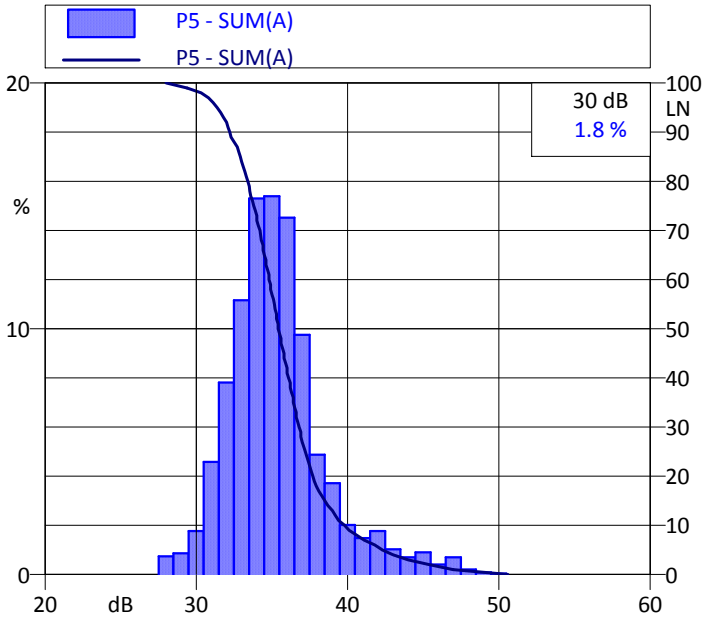
Note:

grilli, auto

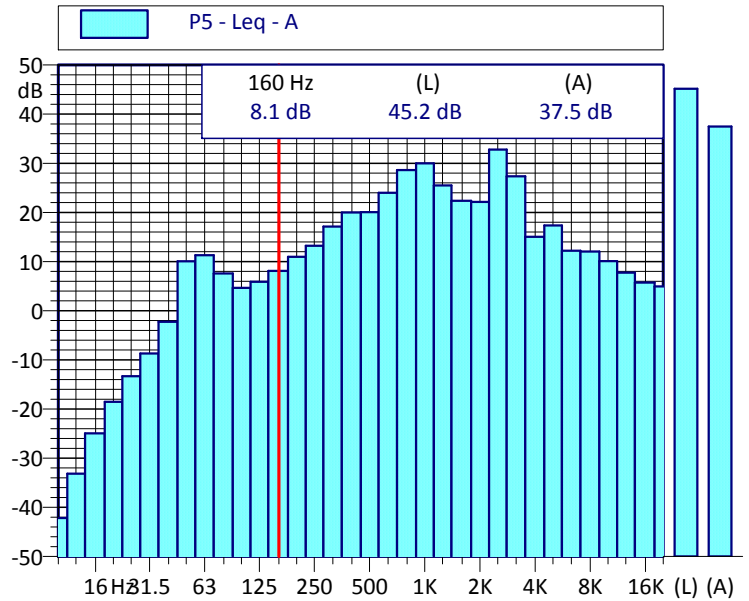
Andamento temporale dei livelli pesati A e dello spettro



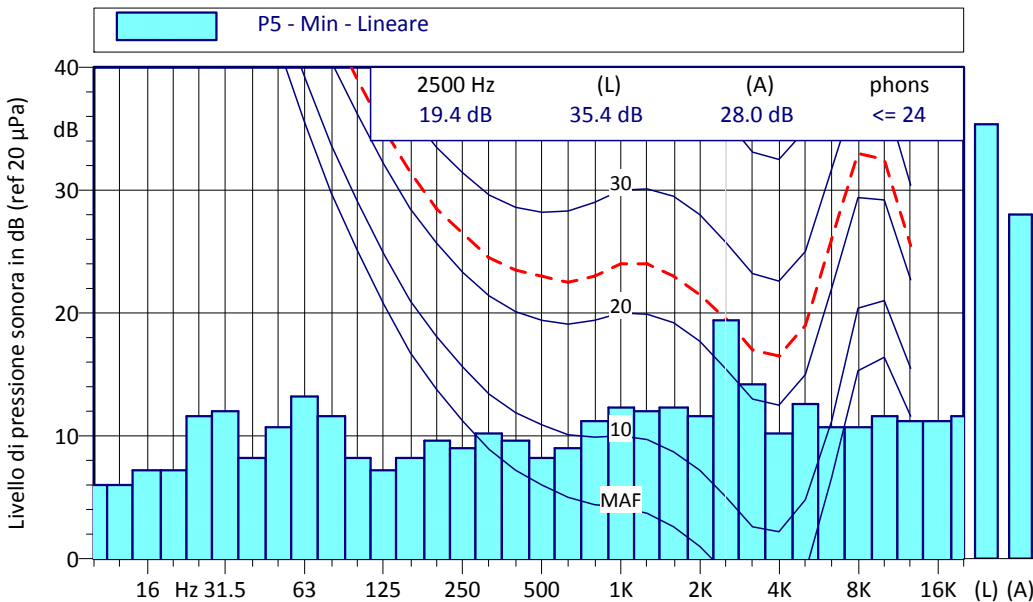
Curva cumulativa e distributiva dei livelli sonori



Spettro in frequenza della misura



Spettro dei minimi (ricerca componenti tonali)



P5 Min - Lineare			
Hz	dB	Hz	dB
10 Hz	6.0 dB	12.5 Hz	6.0 dB
16 Hz	7.2 dB	20 Hz	7.2 dB
25 Hz	11.6 dB	31.5 Hz	12.0 dB
40 Hz	8.2 dB	50 Hz	10.7 dB
63 Hz	13.2 dB	80 Hz	11.6 dB
100 Hz	8.2 dB	125 Hz	7.2 dB
160 Hz	8.2 dB	200 Hz	9.6 dB
250 Hz	9.0 dB	315 Hz	10.2 dB
400 Hz	9.6 dB	500 Hz	8.2 dB
630 Hz	9.0 dB	800 Hz	11.2 dB
1000 Hz	12.3 dB	1250 Hz	12.0 dB
1600 Hz	12.3 dB	2000 Hz	11.6 dB
2500 Hz	19.4 dB	3150 Hz	14.2 dB
4000 Hz	10.2 dB	5000 Hz	12.6 dB
6300 Hz	10.7 dB	8000 Hz	10.7 dB
10000 Hz	11.6 dB	12500 Hz	11.2 dB
16000 Hz	11.2 dB	20000 Hz	11.6 dB

Valori acustici principali [dB(A)]

Lmin(A): 27.2 Lmax(A): 46.9

Leq(A) : 31.6

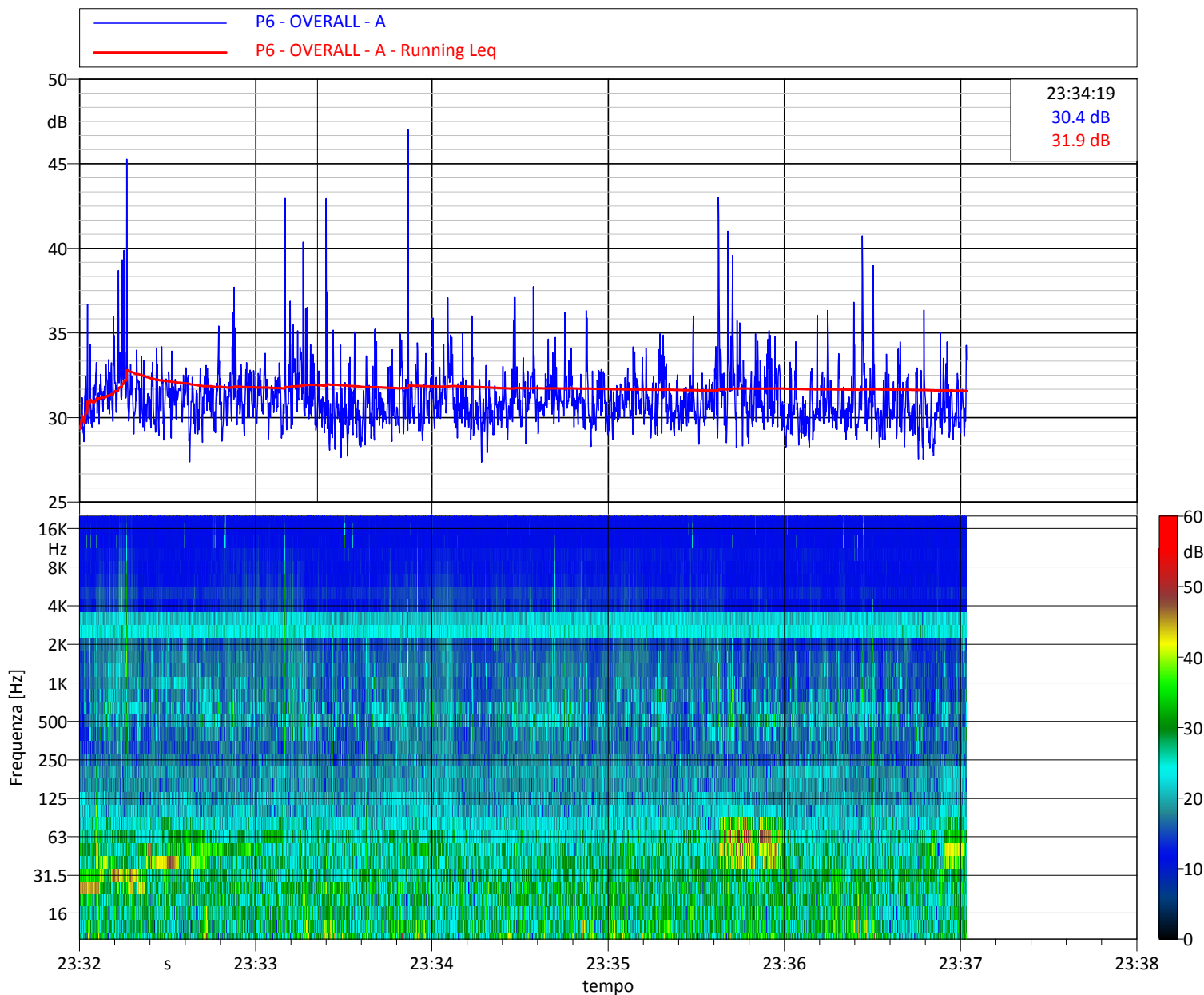
L1: 36.7 L5: 33.7 L10: 32.7

L50: 30.7 L90: 29.3 L95: 28.9 L99: 28.3

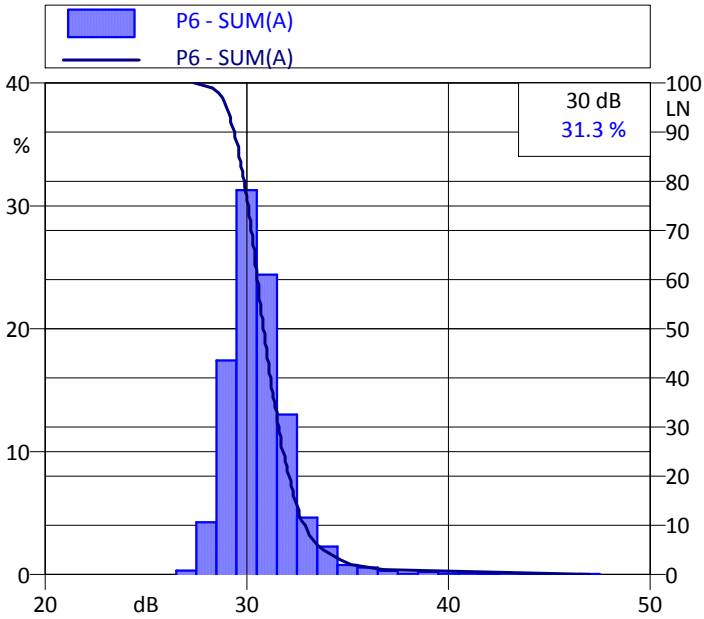
Note:

cani, grilli

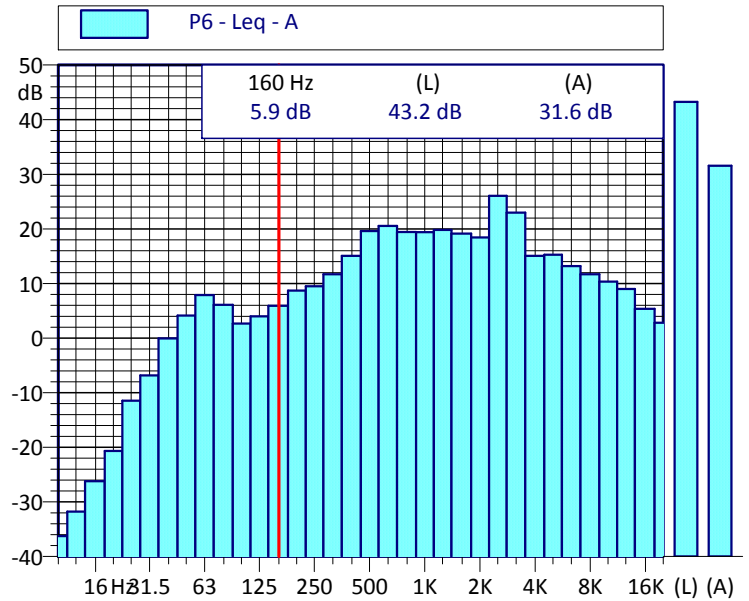
Andamento temporale dei livelli pesati A e dello spettro



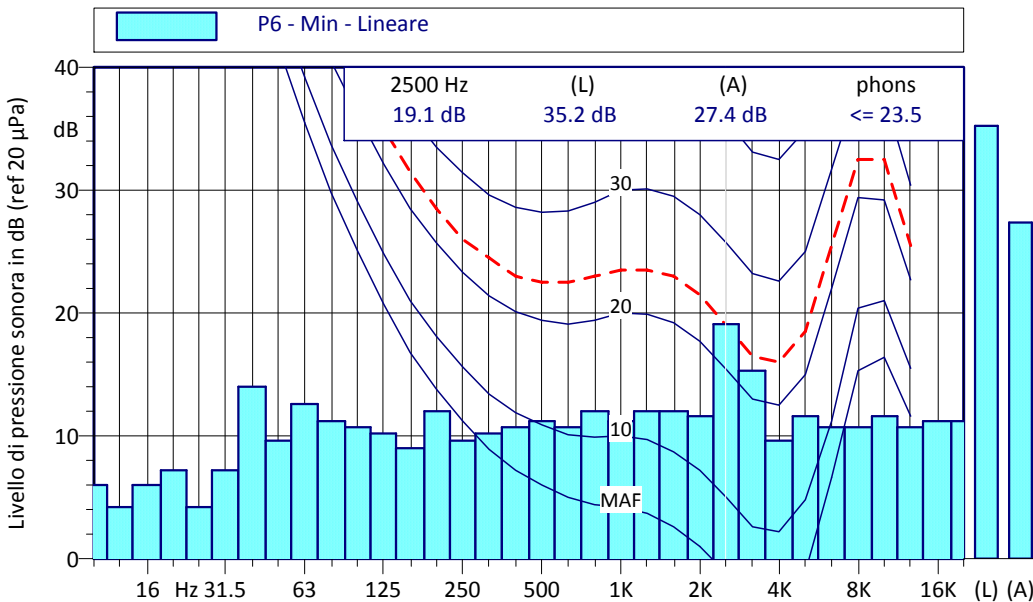
Curva cumulativa e distributiva dei livelli sonori



Spettro in frequenza della misura



Spettro dei minimi (ricerca componenti tonali)



P6 Min - Lineare			
Hz	dB	Hz	dB
10 Hz	6.0 dB	12.5 Hz	4.2 dB
16 Hz	6.0 dB	20 Hz	7.2 dB
25 Hz	4.2 dB	31.5 Hz	7.2 dB
40 Hz	14.0 dB	50 Hz	9.6 dB
63 Hz	12.6 dB	80 Hz	11.2 dB
100 Hz	10.7 dB	125 Hz	10.2 dB
160 Hz	9.0 dB	200 Hz	12.0 dB
250 Hz	9.6 dB	315 Hz	10.2 dB
400 Hz	10.7 dB	500 Hz	11.2 dB
630 Hz	10.7 dB	800 Hz	12.0 dB
1000 Hz	11.2 dB	1250 Hz	12.0 dB
1600 Hz	12.0 dB	2000 Hz	11.6 dB
2500 Hz	19.1 dB	3150 Hz	15.3 dB
4000 Hz	9.6 dB	5000 Hz	11.6 dB
6300 Hz	10.7 dB	8000 Hz	10.7 dB
10000 Hz	11.6 dB	12500 Hz	10.7 dB
16000 Hz	11.2 dB	20000 Hz	11.2 dB

Valori acustici principali [dB(A)]

Lmin(A): 28.0 Lmax(A): 50.5

Leq(A) : 36.5

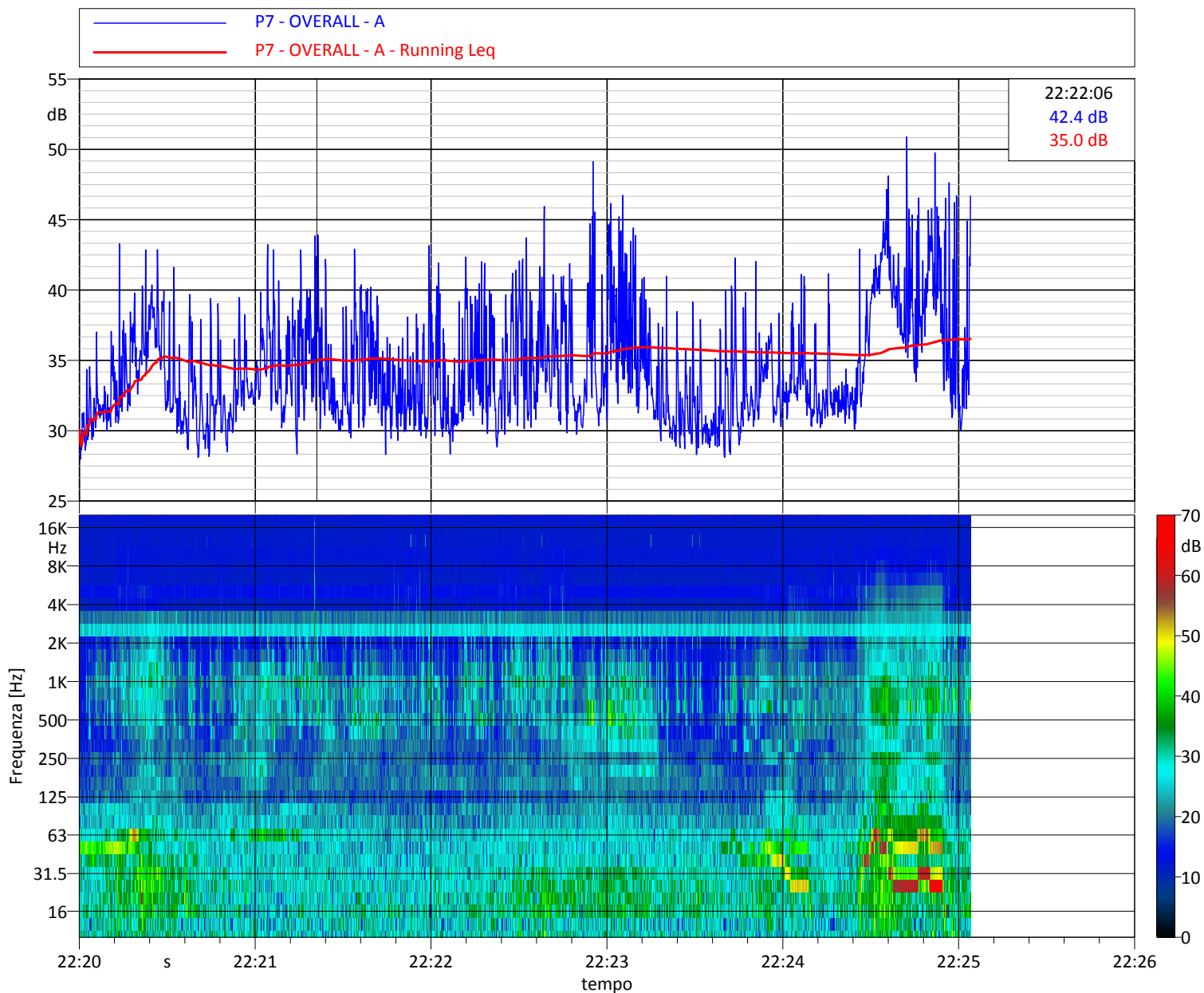
L1: 44.9 L5: 41.8 L10: 39.7

L50: 33.1 L90: 30.2 L95: 29.6 L99: 28.6

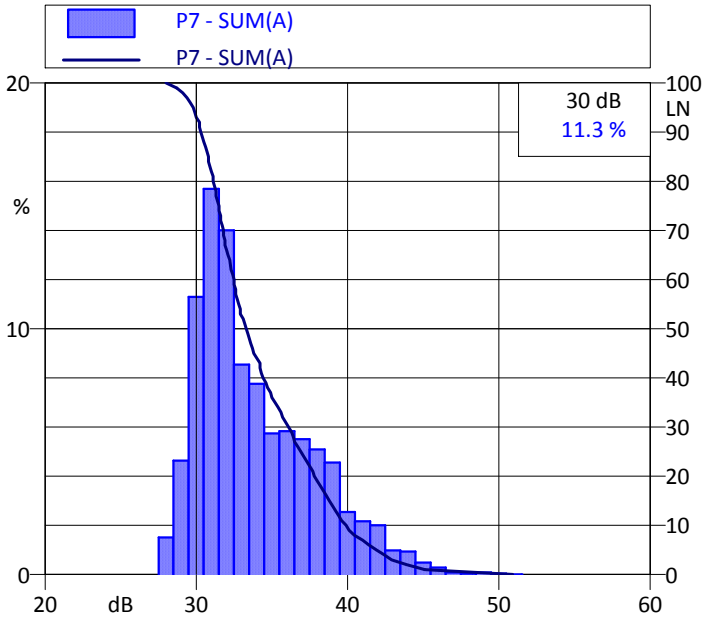
Note:

cani e passaggi auto in lontananza

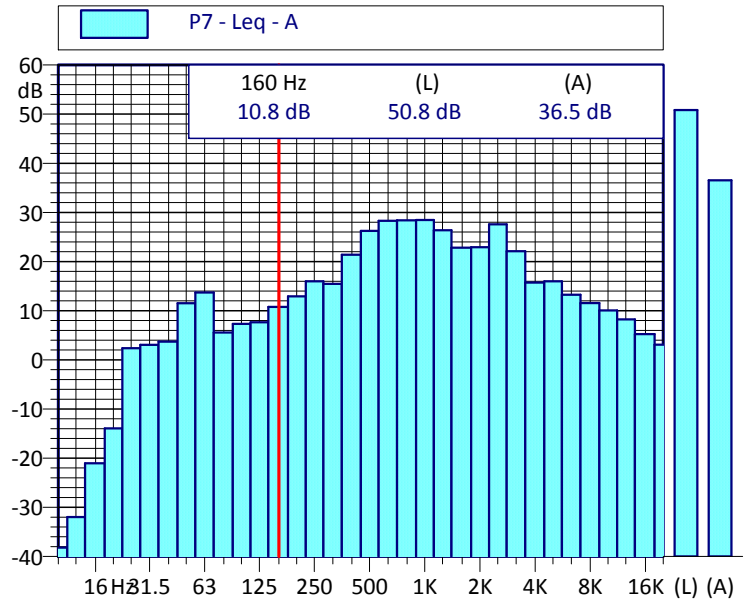
Andamento temporale dei livelli pesati A e dello spettro



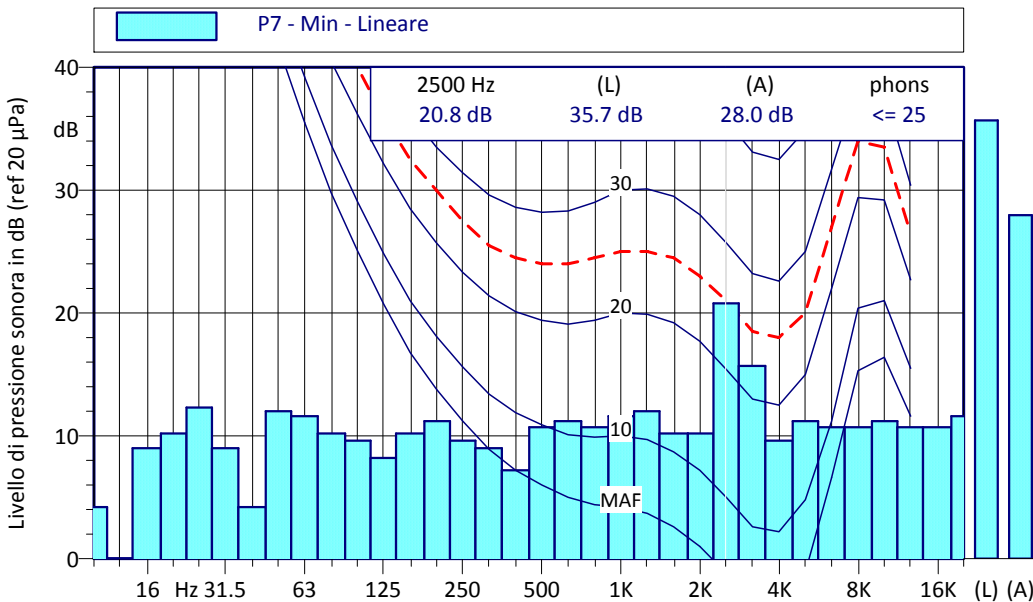
Curva cumulativa e distributiva dei livelli sonori



Spettro in frequenza della misura



Spettro dei minimi (ricerca componenti tonali)



P7 Min - Lineare			
Hz	dB	Hz	dB
10 Hz	4.2 dB	12.5 Hz	0.0 dB
16 Hz	9.0 dB	20 Hz	10.2 dB
25 Hz	12.3 dB	31.5 Hz	9.0 dB
40 Hz	4.2 dB	50 Hz	12.0 dB
63 Hz	11.6 dB	80 Hz	10.2 dB
100 Hz	9.6 dB	125 Hz	8.2 dB
160 Hz	10.2 dB	200 Hz	11.2 dB
250 Hz	9.6 dB	315 Hz	9.0 dB
400 Hz	7.2 dB	500 Hz	10.7 dB
630 Hz	11.2 dB	800 Hz	10.7 dB
1000 Hz	11.6 dB	1250 Hz	12.0 dB
1600 Hz	10.2 dB	2000 Hz	10.2 dB
2500 Hz	20.8 dB	3150 Hz	15.7 dB
4000 Hz	9.6 dB	5000 Hz	11.2 dB
6300 Hz	10.7 dB	8000 Hz	10.7 dB
10000 Hz	11.2 dB	12500 Hz	10.7 dB
16000 Hz	10.7 dB	20000 Hz	11.6 dB