

PROFLO RAMO C

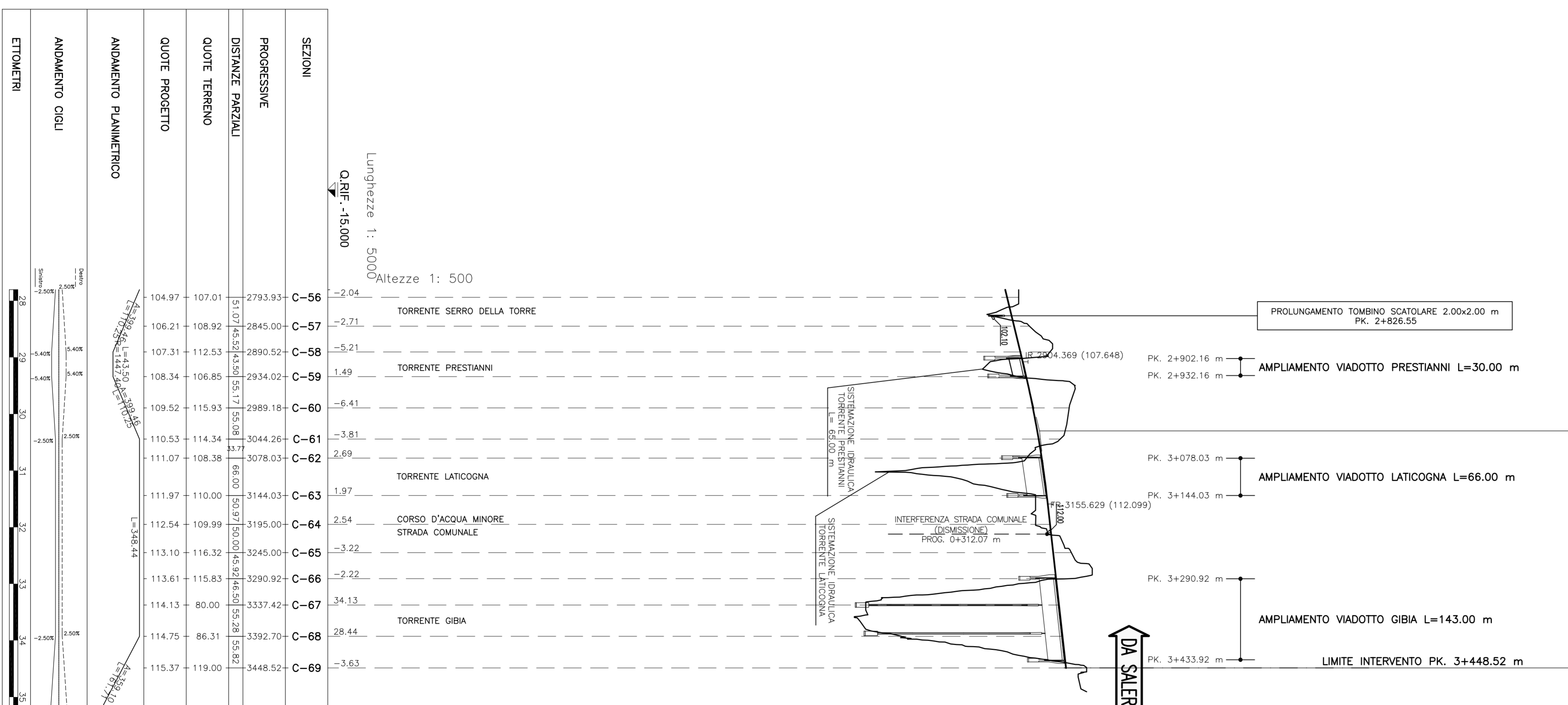
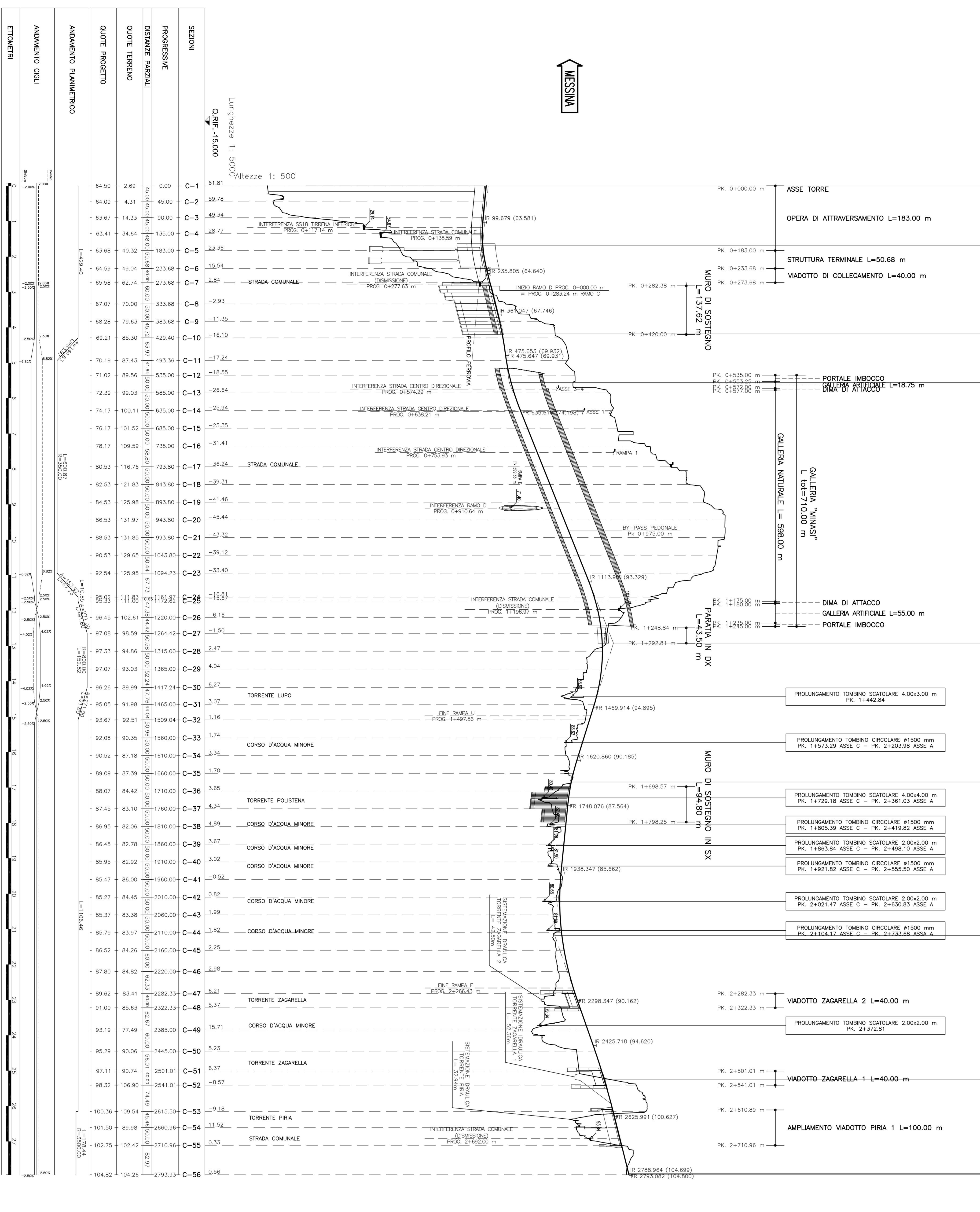
**PROFLO RAMO C IN AFIANCAMENTO
AUTOSTRADA A3 SA-RC**

PROVINCIA	COMUNE	REGIO CALABRIA	VILLA SAN GIOVANNI
CS	1	CS	1
CS	2	CS	2
CS	3	CS	3
CS	4	CS	4
CS	5	CS	5
CS	6	CS	6
CS	7	CS	7
CS	8	CS	8
CS	9	CS	9
CS	10	CS	10
CS	11	CS	11
CS	12	CS	12

PROVINCIA	COMUNE	REGIO CALABRIA	VILLA SAN GIOVANNI
CS	13	CS	13
CS	14	CS	14
CS	15	CS	15
CS	16	CS	16
CS	17	CS	17
CS	18	CS	18
CS	19	CS	19
CS	20	CS	20
CS	21	CS	21
CS	22	CS	22
CS	23	CS	23
CS	24	CS	24
CS	25	CS	25
CS	26	CS	26
CS	27	CS	27
CS	28	CS	28
CS	29	CS	29
CS	30	CS	30
CS	31	CS	31
CS	32	CS	32
CS	33	CS	33
CS	34	CS	34
CS	35	CS	35
CS	36	CS	36
CS	37	CS	37
CS	38	CS	38
CS	39	CS	39
CS	40	CS	40
CS	41	CS	41
CS	42	CS	42
CS	43	CS	43
CS	44	CS	44
CS	45	CS	45
CS	46	CS	46
CS	47	CS	47
CS	48	CS	48
CS	49	CS	49
CS	50	CS	50
CS	51	CS	51
CS	52	CS	52
CS	53	CS	53
CS	54	CS	54
CS	55	CS	55
CS	56	CS	56

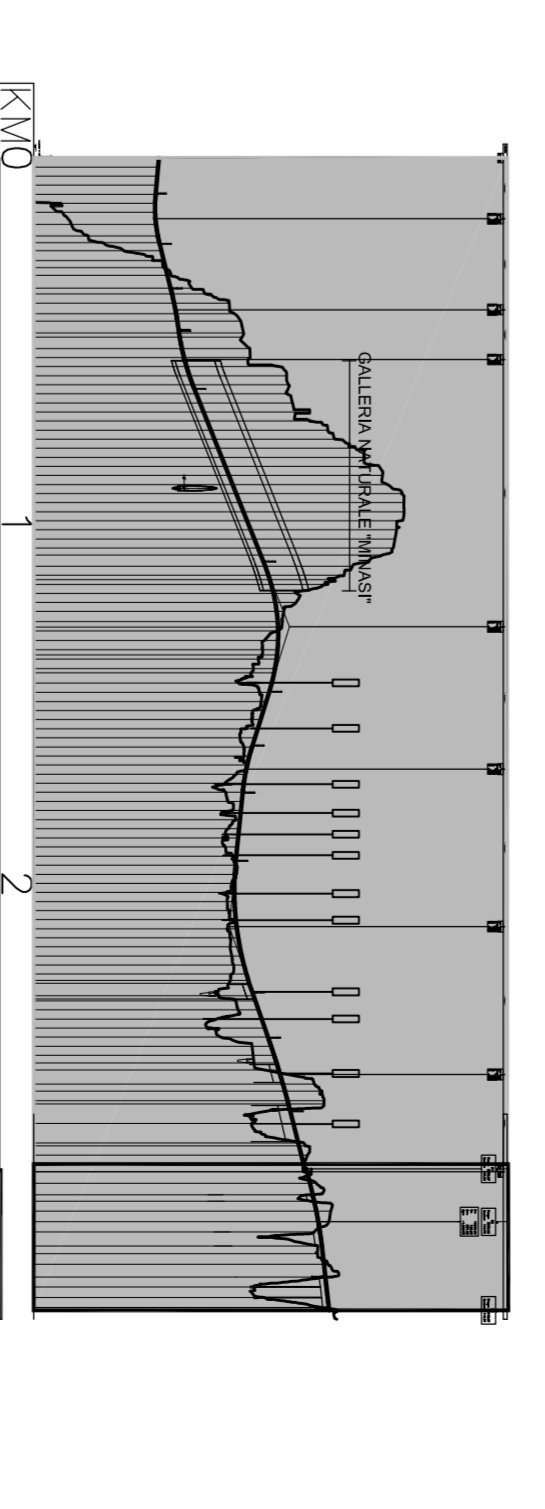
Scala 1:500/500

Scala 1:500/500



SEZIONI	PROGRESSIVE	QUOTE TERRENO	QUOTE PROGETTO
C-1	61.81	0.00	0.00
C-2	59.78	45.00	45.00
C-3	49.34	90.00	90.00
C-4	29.72	135.00	135.00
C-5	23.36	183.00	183.00
C-6	15.04	233.68	233.68
C-7	2.84	273.68	273.68
C-8	-2.93	333.68	333.68
C-9	-11.35	383.68	383.68
C-10	-16.10	429.40	429.40
C-11	-17.24	483.36	483.36
C-12	-18.50	535.00	535.00
C-13	-26.64	585.00	585.00
C-14	-25.84	635.00	635.00
C-15	-25.35	685.00	685.00
C-16	-31.41	735.00	735.00
C-17	-36.24	783.80	783.80
C-18	-39.31	843.80	843.80
C-19	-41.46	893.80	893.80
C-20	-43.32	943.80	943.80
C-21	-43.32	993.80	993.80
C-22	-39.12	1043.80	1043.80
C-23	-33.40	1094.23	1094.23
C-24	-18.81	1144.23	1144.23
C-25	-11.82	1194.23	1194.23
C-26	-6.16	1244.23	1244.23
C-27	-1.50	1294.23	1294.23
C-28	2.47	1344.23	1344.23
C-29	4.04	1394.23	1394.23
C-30	6.27	1444.23	1444.23
C-31	3.07	1494.23	1494.23
C-32	1.16	1544.23	1544.23
C-33	1.74	1594.23	1594.23
C-34	3.34	1644.23	1644.23
C-35	1.70	1694.23	1694.23
C-36	3.65	1744.23	1744.23
C-37	4.34	1794.23	1794.23
C-38	4.89	1844.23	1844.23
C-39	3.47	1894.23	1894.23
C-40	3.02	1944.23	1944.23
C-41	-0.52	1994.23	1994.23
C-42	0.82	2044.23	2044.23
C-43	1.39	2094.23	2094.23
C-44	1.82	2144.23	2144.23
C-45	2.25	2194.23	2194.23
C-46	2.98	2244.23	2244.23
C-47	6.21	2294.23	2294.23
C-48	5.37	2344.23	2344.23
C-49	15.71	2394.23	2394.23
C-50	5.33	2444.23	2444.23
C-51	6.37	2494.23	2494.23
C-52	-8.57	2544.23	2544.23
C-53	-9.18	2594.23	2594.23
C-54	11.52	2644.23	2644.23
C-55	0.33	2710.96	2710.96
C-56	0.56	2793.93	2793.93

SEZIONI	PROGRESSIVE	QUOTE TERRENO	QUOTE PROGETTO
C-56	-2.04	2793.93	2793.93
C-57	-2.71	2843.93	2843.93
C-58	-5.21	2893.93	2893.93
C-59	1.49	2943.93	2943.93
C-60	-6.41	2993.93	2993.93
C-61	-3.81	3043.93	3043.93
C-62	2.69	3093.93	3093.93
C-63	1.97	3143.93	3143.93
C-64	2.34	3193.93	3193.93
C-65	-3.22	3243.93	3243.93
C-66	-2.22	3293.93	3293.93
C-67	34.13	3343.93	3343.93
C-68	28.44	3393.93	3393.93
C-69	-3.63	3443.93	3443.93



Stretto di Messina

EUROINIK S.C.A.

SOCIETA' ITALIANA PER CONDOTTE D'ACQUA S.p.A. (Materiana)

COOPERATIVA NAZIONALE E SEDI S.p.A. (Materiana)

ISHIKAWAYA - HERBA HEAVY INDUSTRIES O.G. (Materiana)

A.C.S. S.p.A. - CONSORCIO STRADE (Materiana)

Il PROGETTO: Dot. Ing. F. Galea (Ing. P. Matarrese)

Il CONTORE GENERALE: STRETTO DI MESSINA (Ing. C. Tommasini)

Il COMMITTENTE: STRETTO DI MESSINA (Dot. F. Galea)

COLLEGAMENTI CALABRIA

PARTE GENERALE STRADALE - OPERE CIVILI

TRACCAMENTO PLANOMETRICO, SEZIONE E GEOMETRIA CORPO STRADALE GENERALE

PROFLO LONGITUDINALE GENERALE RAMO C

CS0041-FG

PROVINCIA	CS
COMUNE	VILLA SAN GIOVANNI
REGIO	CALABRIA
PROGETTO	TRACCAMENTO PLANOMETRICO, SEZIONE E GEOMETRIA CORPO STRADALE GENERALE
DATA	11/05/2011
SCALE	1:500/500